

Rebecca Bowers  
Ribbles Valley Borough Council  
Council offices  
Church Walk  
Clitheroe  
BB7 2RA

Plant Protection  
Cadent  
Block 1; Floor 1  
Brick Kiln Street  
Hinckley  
LE10 0NA  
E-mail: [plantprotection@cadentgas.com](mailto:plantprotection@cadentgas.com)  
Telephone: +44 (0)800 688588

**National Gas Emergency Number:**  
**0800 111 999\***

**National Grid Electricity Emergency Number:**  
**0800 40 40 90\***

\* Available 24 hours, 7 days/week.  
Calls may be recorded and monitored.

[www.cadentgas.com](http://www.cadentgas.com)

**Date:** 18/07/2018

**Our Ref:** NW\_TW\_Z1\_3NWP\_012164

**Your Ref:** 3/2018/0596 (cjb)

**RE: Formal Planning Application, BB7 2LH, Land adjacent to 12 Manor Road Clitheroe**

Thank you for your enquiry which was received on 13/07/2018.  
Please note this response and any attached map(s) are valid for 28 days.

An assessment has been carried out with respect to Cadent Gas Ltd, National Grid Electricity Transmission plc's and National Grid Gas plc's apparatus. Please note it does not cover the items listed in the section "Your Responsibilities and Obligations", including gas service pipes and related apparatus.  
For details of Network areas please see the Cadent website (<http://cadentgas.com/Digging-safely/Dial-before-you-dig>) or the enclosed documentation.

### **Are My Works Affected?**

**Searches based on your enquiry have identified that there is apparatus in the vicinity of your enquiry which may be affected by the activities specified.**

**Can you please inform Plant Protection, as soon as possible, the decision your authority is likely to make regarding this application.**

If the application is refused for any other reason than the presence of apparatus, we will not take any further action.

Please let us know whether Plant Protection can provide you with technical or other information that may be of assistance to you in the determination of the application.

Due to the presence of Cadent and/or National Grid apparatus in proximity to the specified area, the contractor should contact Plant Protection before any works are carried out to ensure the apparatus is not affected by any of the proposed works.

## Your Responsibilities and Obligations

The "Assessment" Section below outlines the detailed requirements that must be followed when planning or undertaking your scheduled activities at this location.

It is your responsibility to ensure that the information you have submitted is accurate and that all relevant documents including links are provided to all persons (either direct labour or contractors) working for you near Cadent and/or National Grid's apparatus, e.g. as contained within the Construction (Design and Management) Regulations.

This assessment solely relates to Cadent Gas Ltd, National Grid Electricity Transmission plc (NGET) and National Grid Gas plc (NGG) and apparatus. This assessment does **NOT** include:

- Cadent and/or National Grid's legal interest (easements or wayleaves) in the land which restricts activity in proximity to Cadent and/or National Grid's assets in private land. You must obtain details of any such restrictions from the landowner in the first instance and if in doubt contact Plant Protection.
- Gas service pipes and related apparatus
- Recently installed apparatus
- Apparatus owned by other organisations, e.g. other gas distribution operators, local electricity companies, other utilities, etc.

It is **YOUR** responsibility to take into account whether the items listed above may be present and if they could be affected by your proposed activities. Further "Essential Guidance" in respect of these items can be found on the National Grid Website (<http://www2.nationalgrid.com/WorkArea/DownloadAsset.aspx?id=8589934982>).

This communication does not constitute any formal agreement or consent for any proposed development work; either generally or with regard to Cadent and/or National Grid's easements or wayleaves nor any planning or building regulations applications.

Cadent Gas Ltd, NGG and NGET or their agents, servants or contractors do not accept any liability for any losses arising under or in connection with this information. This limit on liability applies to all and any claims in contract, tort (including negligence), misrepresentation (excluding fraudulent misrepresentation), breach of statutory duty or otherwise. This limit on liability does not exclude or restrict liability where prohibited by the law nor does it supersede the express terms of any related agreements.

If you require further assistance please contact the Plant Protection team via e-mail ([click here](#)) or via the contact details at the top of this response.

Yours faithfully

Plant Protection Team

# ASSESSMENT

## Affected Apparatus

The apparatus that has been identified as being in the vicinity of your proposed works is:

- Low or Medium pressure (below 2 bar) gas pipes and associated equipment. (As a result it is highly likely that there are gas services and associated apparatus in the vicinity)

## Requirements

**BEFORE carrying out any work you must:**

- Carefully read these requirements including the attached guidance documents and maps showing the location of apparatus.
- Contact the landowner and ensure any proposed works in private land do not infringe Cadent and/or National Grid's legal rights (i.e. easements or wayleaves). If the works are in the road or footpath the relevant local authority should be contacted.
- Ensure that all persons, including direct labour and contractors, working for you on or near Cadent and/or National Grid's apparatus follow the requirements of the HSE Guidance Notes HSG47 - 'Avoiding Danger from Underground Services' and GS6 – 'Avoidance of danger from overhead electric power lines'. This guidance can be downloaded free of charge at <http://www.hse.gov.uk>
- In line with the above guidance, verify and establish the actual position of mains, pipes, cables, services and other apparatus on site before any activities are undertaken.

# GUIDANCE

## **Excavating Safely - Avoiding injury when working near gas pipes:**

[http://www.nationalgrid.com/NR/rdonlyres/2D2EEA97-B213-459C-9A26-18361C6E0B0D/25249/Digsafe\\_leaflet3e2finalamends061207.pdf](http://www.nationalgrid.com/NR/rdonlyres/2D2EEA97-B213-459C-9A26-18361C6E0B0D/25249/Digsafe_leaflet3e2finalamends061207.pdf)

## **Standard Guidance**

### **Essential Guidance document:**

<http://www2.nationalgrid.com/WorkArea/DownloadAsset.aspx?id=8589934982>

### **General Guidance document:**

<http://www2.nationalgrid.com/WorkArea/DownloadAsset.aspx?id=35103>

### **Excavating Safely in the vicinity of gas pipes guidance (Credit card):**

<http://www.nationalgrid.com/NR/rdonlyres/A3D37677-6641-476C-9DDA-E89949052829/44257/ExcavatingSafelyCreditCard.pdf>

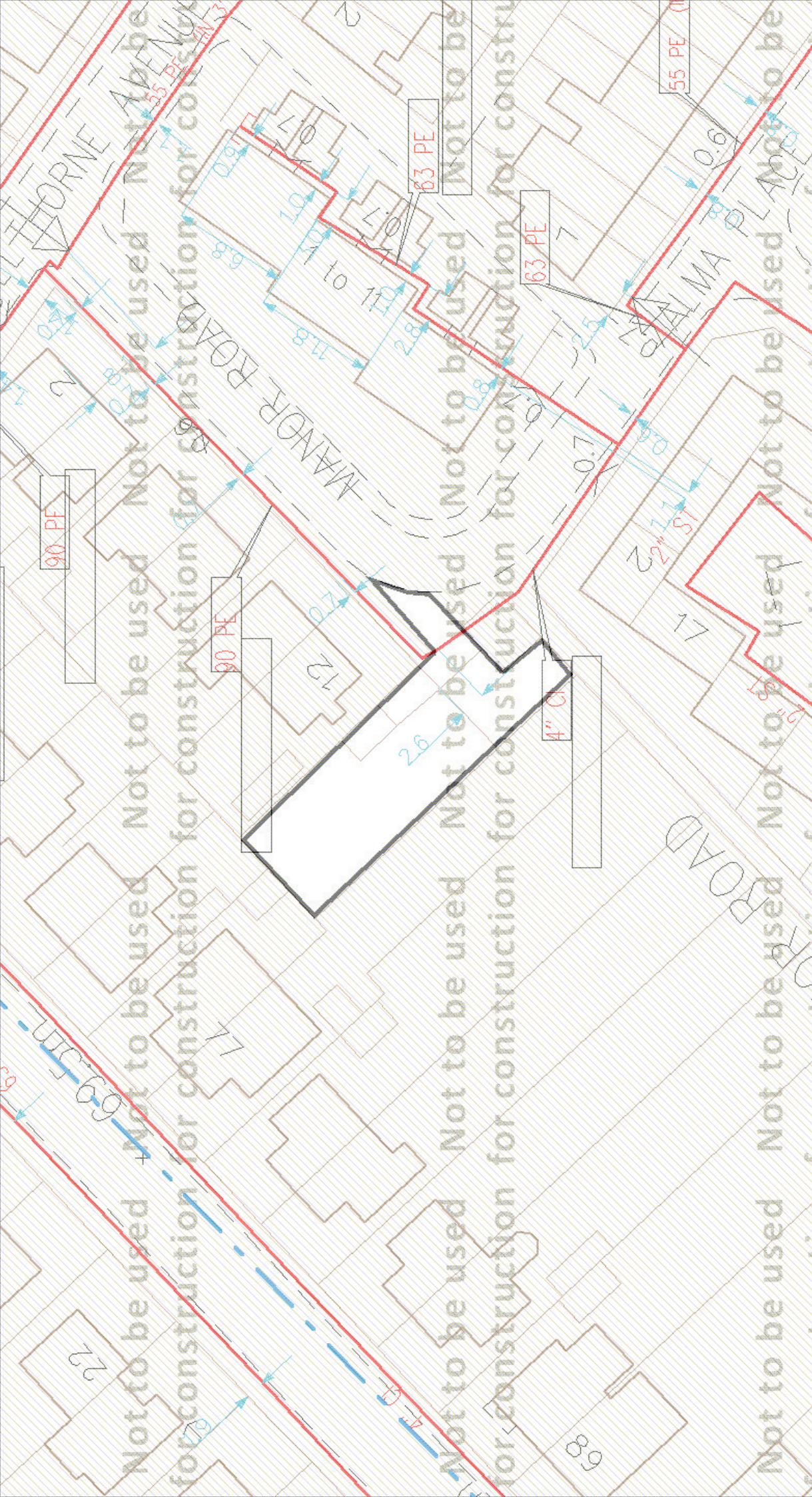
### **Excavating Safely in the vicinity of electricity cables guidance (Credit card):**

<http://www.nationalgrid.com/NR/rdonlyres/35DDEC6D-D754-4BA5-AF3C-D607D05A25C2/44858/ExcavatingSafelyCreditCardelectricitycables.pdf>

Copies of all the Guidance Documents can also be downloaded from the National Grid Website:

<http://www.nationalgrid.com/uk/Gas/Safety/work/downloads/>





ID: NW_TW_Z1_3NWP_012164		View extent: 145m, 79m	Do not proceed without further consultation		Map 1 of 1 (GAS)
USER: Carly Bower	LP MAINS	<div><div></div><div></div><div></div><div></div><div></div></div> <div>0m 10m</div> <div>Approximate scale 1:500</div> <div>on A4 Colour Landscape</div>	<p>This plan shows those pipes owned by National Grid Gas plc in its role as a Licensed Gas Transporter (GT). Gas pipes owned by other GTs, or otherwise privately owned, may be present in this area. Information with regard to such pipes should be obtained from the relevant owners. The information shown on this plan is given without warranty, the accuracy thereof cannot be guaranteed. Service pipes, valves, syphons, stub connections, etc., are not shown but their presence should be anticipated. No liability of any kind whatsoever is accepted by National Grid Gas plc or their agents, servants or contractors for any error or omission. Safe digging practices, in accordance with HS(G)47, must be used to verify and establish the actual position of mains, pipes, services and other apparatus on site before any mechanical plant is used. It is your responsibility to ensure that this information is provided to all persons (either direct labour or contractors) working for you on or near gas apparatus. The information included on this plan should not be referred to beyond a period of 28 days from the date of issue.</p>		
DATE: 18/07/2018	MP MAINS				
DATA DATE: 17/07/2018	IP MAINS				
REF: 3/2018/0596 (cjb)	LHP MAINS				
MAP REF: SD7341	NHP MAINS				
CENTRE: 373721, 441355			MAPS Plot Server Version 1.9.0		
Same example of plan here:			<b>Cadent</b> Your Gas Network		
Valve			Requested by: Ribbles Valley Borough Council		
Depth of Cover			This plan is reproduced from or based on the OS map by National Grid Gas plc, with the sanction of the controller of HM Stationery Office.		
Syphon			Crown Copyright Reserved. Ordnance Survey Licence number 100024886		
Diameter Change					
Material Change					
Out of Standard Service					



# ENQUIRY SUMMARY

## Received Date

13/07/2018

## Your Reference

3/2018/0596 (cjb)

## Location

Centre Point: 373721, 441354

X Extent: 33

Y Extent: 32

Postcode: BB7 2LH

Location Description: BB7 2LH, Land adjacent to 12 Manor Road Clitheroe

## Map Options

Paper Size: A4

Orientation: LANDSCAPE

Requested Scale: 500

Actual Scale: 1:500 (GAS)

Real World Extents: 145m x 79m (GAS)

## Recipients

pprsteam@cadentgas.com

## Enquirer Details

Organisation Name: Ribble Valley Borough Council

Contact Name: Rebecca Bowers

Email Address: planning@ribblevalley.gov.uk

Telephone: 01200 414501

Address: Council offices, Church Walk, Clitheroe, BB7 2RA

## Description of Works

PA. Erection of detached dwelling and workshop. WL

## Enquiry Type

Formal Planning Application

## Development Types

Development Type: Development for use by General Public