



© Crown copyright and database rights 2014 Ordnance Survey 100026316. You are not permitted to copy, sub-license, distribute or sell any of this data to third parties in any form.



These are the notes referred to on the following official copy

The electronic official copy of the title plan follows this message.

Please note that this is the only official copy we will issue. We will not issue a paper official copy.

This official copy was delivered electronically and when printed will not be to scale. You can obtain a paper official copy by ordering one from Land Registry.

This official copy is issued on 25 February 2016 shows the state of this title plan on 25 February 2016 at 18:53:47. It is admissible in evidence to the same extent as the original (s.67 Land Registration Act 2002). This title plan shows the general position, not the exact line, of the boundaries. It may be subject to distortions in scale. Measurements scaled from this plan may not match measurements between the same points on the ground.

This title is dealt with by the Land Registry, Fylde Office .

320180010

GENERAL NOTES (SINGLE STOREY EXTENSION CHANGE ONLY):

Eaves height 2580 mm from DPC.

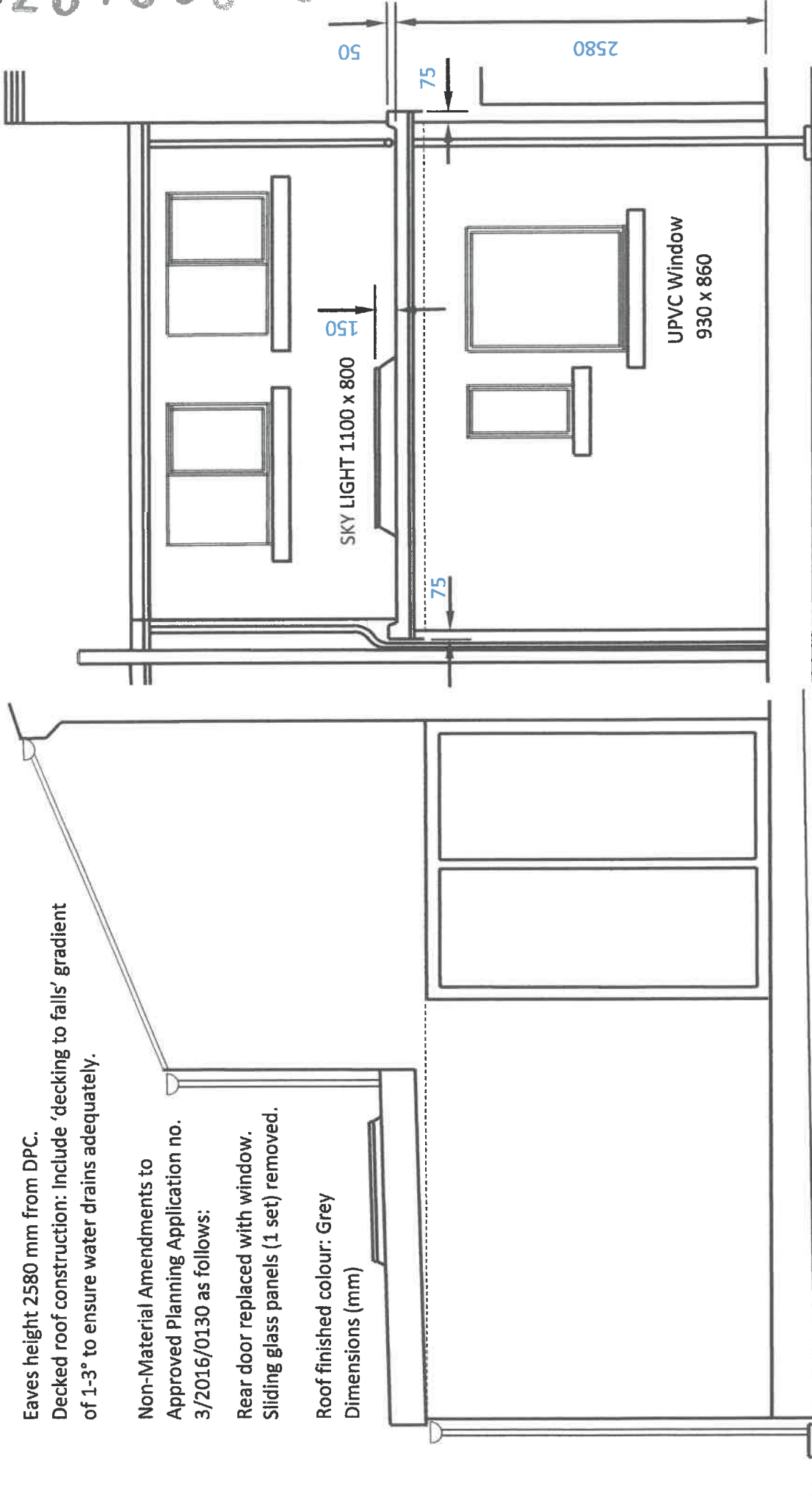
Decked roof construction: Include 'decking to falls' gradient of 1-3° to ensure water drains adequately.

Non-Material Amendments to

Approved Planning Application no.
3/2016/0130 as follows:

Rear door replaced with window.
Sliding glass panels (1 set) removed.

Roof finished colour: Grey
Dimensions (mm)



SIDE ELEVATION

REAR ELEVATION

