

**FISH HOUSE FARM, CHIPPING,  
PRESTON, RIBBLE VALLEY**

**HISTORIC BUILDING RECORDING**



*Planning Reference 3/2016/1027*

*JB Archaeology Ltd.*

On Behalf of

**A Carr Esq.**

September 2018

***JB Archaeology Ltd***  
*Company Number 10299372*  
*VAT Registration Number 247354789*  
Rosebank  
Newby Wiske  
North Yorkshire  
DL7 9EX

07903 867 160

[johnbuglass@yahoo.com](mailto:johnbuglass@yahoo.com) [www.jbasarchaeology.co.uk](http://www.jbasarchaeology.co.uk)

## Contents

	<i>Summary</i>	
1.0	Introduction	5
2.0	Background	5
3.0	Aims and Objectives	7
4.0	Methodology	7
5.0	Results	7
6.0	Discussion and Conclusions	12
	<i>Acknowledgments</i>	12
	<i>References</i>	12
	<i>Appendix I – Photograph Catalogue</i>	13

## Illustrations

Front Cover: Flag and cobble floor to southern cart porch in Barn B, looking south

### *Figures*

Figure 1. General Site Location

Figure 2. Detailed Site Location

Figure 3. Location & direction of exterior photographs (Drawing J Wharton)

Figure 4. Location & direction of Barn A ground floor photographs (Drawing J Wharton)

Figure 5. Location & direction of Barn A first floor photographs (Drawing J Wharton)

Figure 6. Location & direction of Barn B floor photographs (Drawing J Wharton)

### *Plates*

Plate 1. Western barn (Barn A), looking north, scale 1m

Plate 2. Eastern barn (Barn B), looking south-east, scale 1m

Plate 3. Jacobs ladder in eastern room of Barn A, looking east, scale 1m

Plate 4. Remains of timber stall and cobbles, looking south-east, scale 1m

Plate 5. One of three iron posts & brackets for hay loft, looking west, scale 1m

Plate 6. Bead moulded sliding shutters, looking south-east, scale 1m

Plate 7. Stone floor to cart porch, looking south, scale 1m

**FISH HOUSE FARM, CHIPPING,  
PRESTON, RIBBLE VALLEY**

**HISTORIC BUILDING RECORDING**

*Summary*

*A programme of historic building recording was undertaken on the two historic barns at Fish House Farm, Fish House Lane, Chipping PR3 2GQ, planning reference 3/2016/1027 (NGR SD 6160 4480). The recording was in the form of a detailed photographic record of the buildings as they stood prior to their proposed redevelopment into dwellings. The recording was carried out on the 19<sup>th</sup> September 2018.*

*The results of the building recorded two randomly coursed, stone-built barns dating to the latter half of the 19<sup>th</sup> century. Both barns had been re-roofed with modern timbers under 'blue' slate. In addition to the original openings in the barns a number of later windows had been added, mainly to the southern and western elevations which looked out on to the former farmyard.*

*The barns had little in the way of surviving internal historic features due to various changes in agricultural practice over the last 150 years with most of the internal features being replaced with concrete. Surviving features included: elements of a timber boskins; cobble flooring in the cart porch and iron posts and brackets.*

**FISH HOUSE FARM, CHIPPING,  
PRESTON, RIBBLE VALLEY**

**HISTORIC BUILDING RECORDING**

**1.0 INTRODUCTION**

- 1.1 This report presents the results of a programme of historic building recording by photographic record prior to the conversion of two historic farm buildings at Fish House Farm, Fish House Lane, Chipping PR3 2GQ, planning reference 3/2016/1027 (NGR SD 6160 4480) (Figures 1 & 2). The building lies in the civil parish of Chipping, in the Ribble Valley, Lancashire.
- 1.2 This report has been produced JB Archaeology Ltd (JBA Ltd) on behalf of A Carr Esq. with the on site recording being undertaken on the 19<sup>th</sup> September 2018.

**2.0 BACKGROUND**

**Historic Background**

- 2.1 The place name for Chipping is first recorded in 1203 as *Chippin* with the name deriving from the Old English *ceping* meaning ‘a market or market-place’ (Mills, 2011, 113). This shows that there has probably been a settlement here for at least 1,000 years, as Old English was in use from 450AD to 1150AD.

**Geology and Soils**

- 2.2 The underlying geology of the site is the Tournasian and Visean limestone of the Carboniferous Limestone Series (British Geological Survey, 2001). Overlying this, the quaternary geology is currently unclassified by the British Geological Survey (British Geological Survey, 1977). The soils, which have developed from these deposits, are classified as the Brickfield 3 association, which is a slowly permeable, seasonally waterlogged fine loamy soil (Soil Survey of England and Wales, 1983).

**Topography and Land-use**

- 2.3 The building is located on the southern side of Fish House Lane which runs north-west from the settlement of Chipping. The building is at a height above sea level of c.170mOD and is surrounded by farmland.

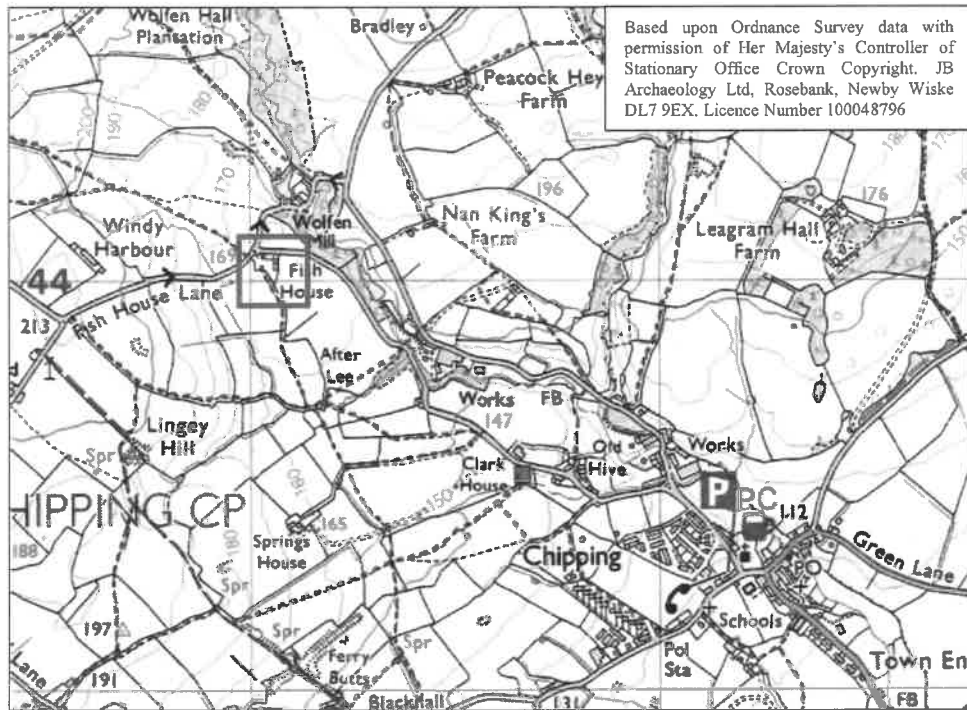


Figure 1. Site Location

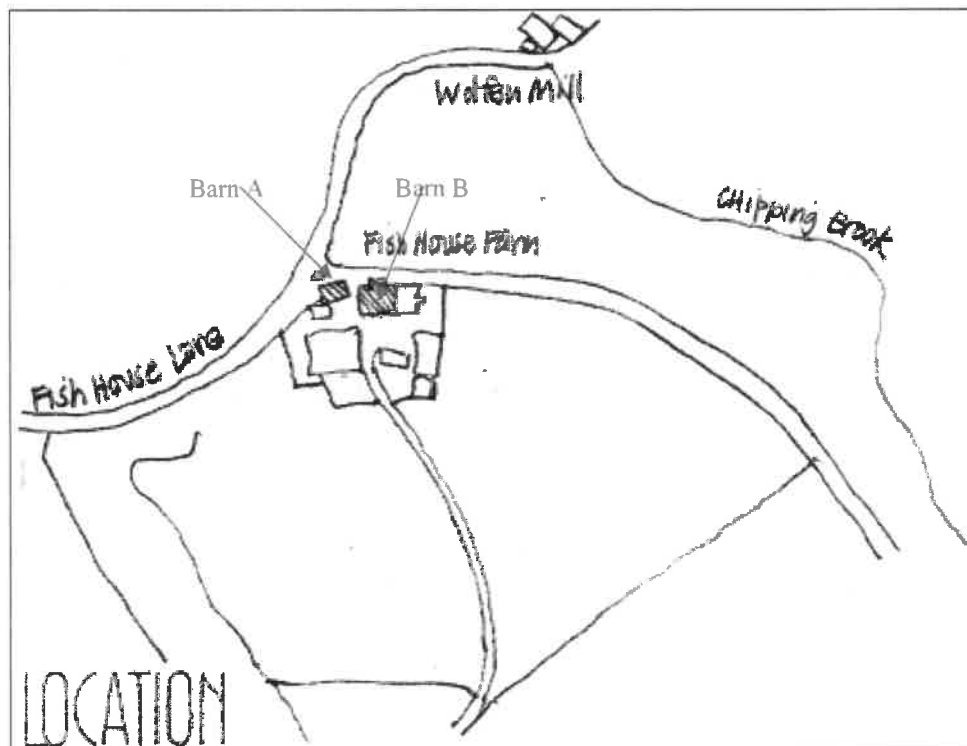


Figure 2. Detailed Site Location

(Drawing J Wharton)

### **3.0 AIMS AND OBJECTIVES**

3.1 The overall objective of the historic building recording was to create a photographic record of the buildings as they currently stand prior to any re-development works. The specific aims were to:

- create a detailed photographic record of the historic barns
- record photographically any surviving architectural/historic features
- complete a suitably detailed report on the results of the historic building recording

### **4.0 METHODOLOGY**

4.1 All works were carried out to a previously agreed written scheme of investigation (Buglass, 2018) and in line with both the Historic England (2016) and Chartered Institute for Archaeology (2014) guidelines for recording historic buildings.

### **5.0 RESULTS**

5.1 From an examination of the historic OS mapping the current barns on the site can be seen to date from between 1847 and 1893 and replaced an earlier row of buildings which ran along the southern side of the Fish House Lane. The two barns are both built of randomly coursed local stone under a modern 'blue' slate roof (Plates 1 & 2). Both barns contain a number of openings including windows, pedestrian and livestock access, cart doors and forking holes for hay. The majority of the openings face to the south on to the former farmyard.



Plate 1. Western barn (Barn A), looking north, scale 1m

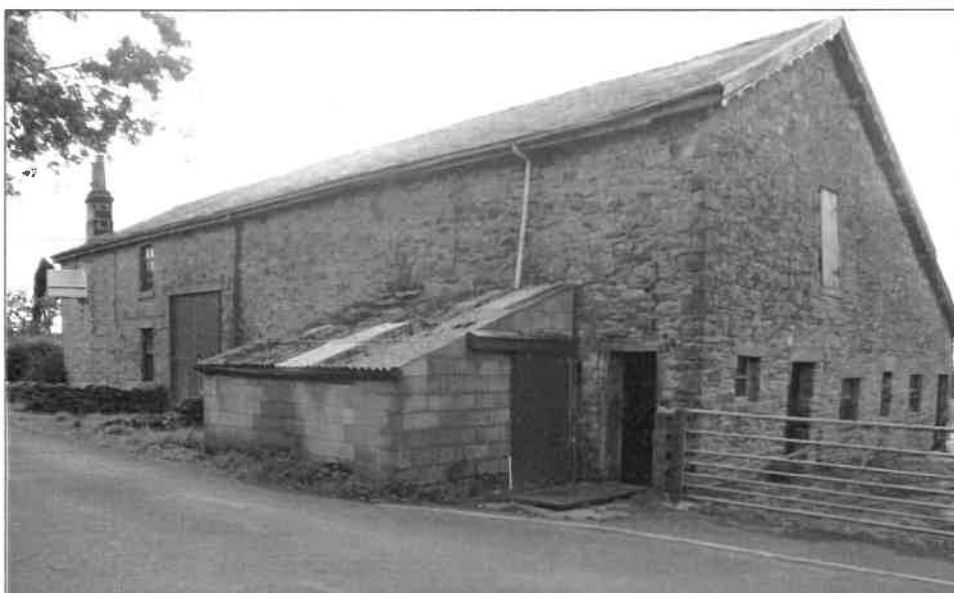


Plate 2. Eastern barn (Barn B), looking south-east, scale 1m

5.2 The lintels and sills of the openings of the two barns were also of local stone with either a pecked finish (for the windows) or series of simply chiselled diagonal lines (over the doorways). A number of windows could be seen to be later additions both from their size and the use of concrete lintels and sills.

5.3 Modern agricultural practice has meant that very few historic features have survived within the two barns. Those that do survive were:

*Barn A*

- A Jacobs ladder in the eastern most room (Plate 3).
- Elements of a timber boskin and some cobble flooring in the middle room (Plate 4).

*Barn B*

- Three iron posts and brackets supporting the hay loft (Plate 5).
- Bead-moulded sliding doors to the feeding holes for the animal stalls – though these are reused as they sit on a concrete block wall (Plate 6).
- The stone flag and cobble floor in the southern cart porch (Plate 7).

5.4 In Figures 3-6 in Appendix I, the position and direction of the photographs is shown. The details of each photograph are also given in the Appendix.





Plate 3. Jacobs ladder in eastern room of Barn A, looking east, scale 1m



Plate 4. Remains of timber stall and cobbles, looking south-east, scale 1m

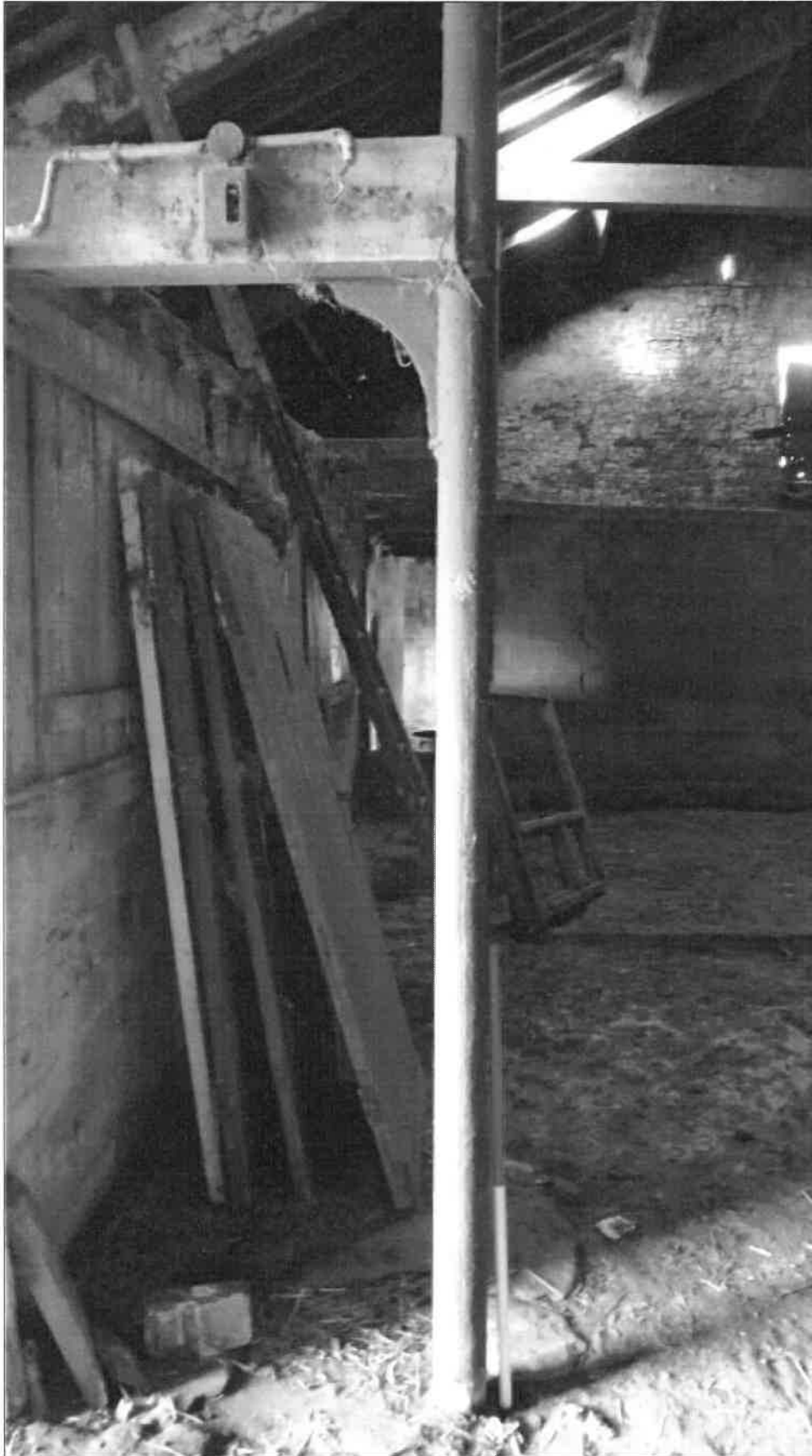


Plate 5. One of three iron posts & brackets for hay loft, looking west, scale 1m



Plate 6. Bead-moulded sliding shutters, looking south-east, scale 1m



Plate 7. Stone floor to cart porch, looking south, scale 1m

## 6.0 DISCUSSION and CONCLUSIONS

- 6.1 Overall, apart from the external walls, little of the historic fabric of the two barns could be seen to have survived into the modern period. The barns could also be seen to have undergone a number of alterations, primarily in the form of the insertion of a small number of windows in the southern and western elevations.

### Acknowledgements

I would like to thank John Pallister and John Wharton for inviting me to undertake the project.

### References

- Buglass, J, 2018, *Fish House Farm, Chipping, Preston, Ribble Valley. Written Scheme of Investigation for Historic Building Recording*. Unpublished contractors documentation
- Historic England, 2016, *Understanding Historic Buildings; A Guide to Good Recording Practice*
- Chartered Institute for Archaeology, 2014, *Standard and Guidance for an Archaeological Investigation and Recording of Standing Buildings or Structures* (September 1995, revised December 2014)
- Mills, AD, 2011, *A Dictionary of British Place Names*. Oxford University Press. Oxford
- 1977 Geological Survey Ten Mile Map North Sheet Quaternary. British Geological Survey
- 1983 Soils of England and Wales. Sheet 1 Northern England. Soil Survey of England and Wales. Lawes Agricultural Trust, Harpenden
- 2001 Geological Survey 1:625,000 Map North Sheet Solid Geology. British Geological Survey

Appendix I

Photograph Locations

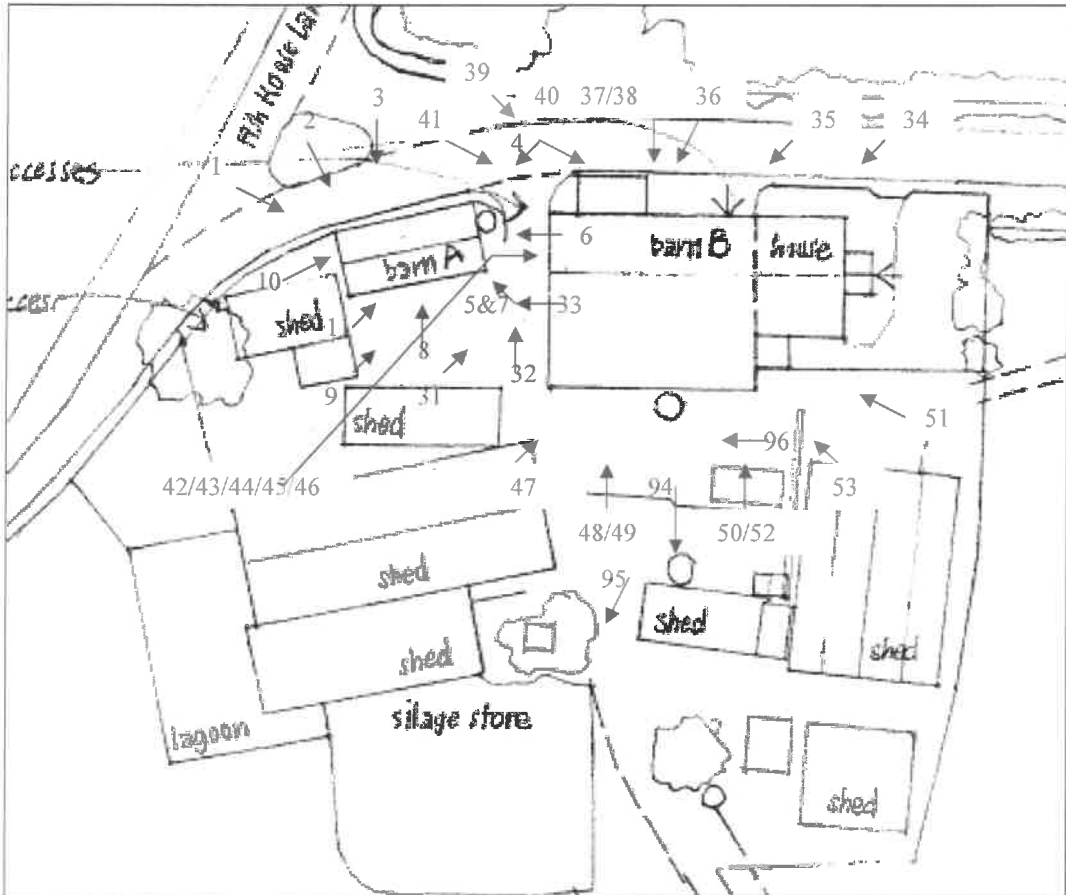


Figure 3. Location & direction of exterior photographs (Drawing J Wharton)

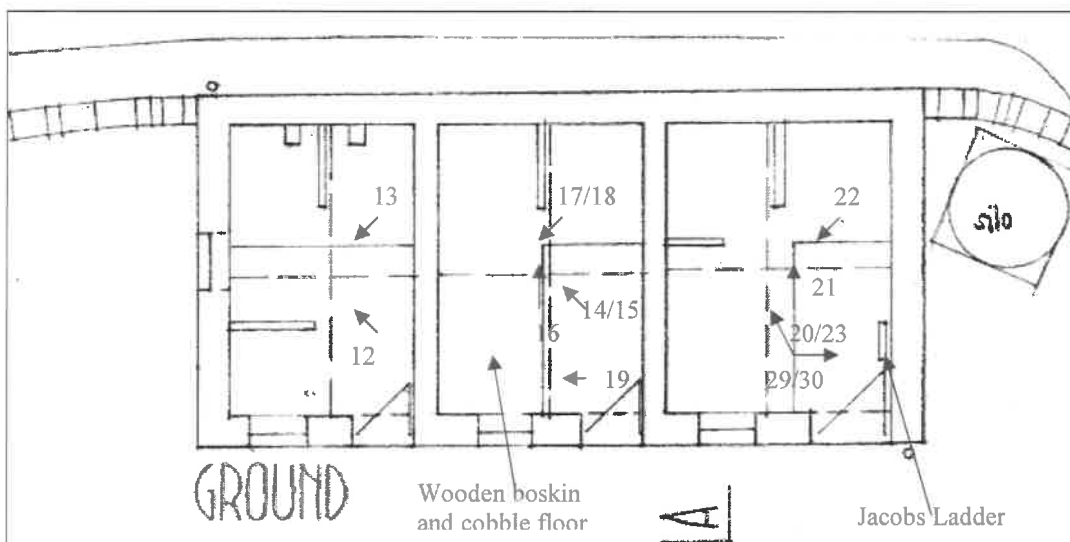


Figure 4. Location & direction of Barn A ground floor photographs (Drawing J Wharton)

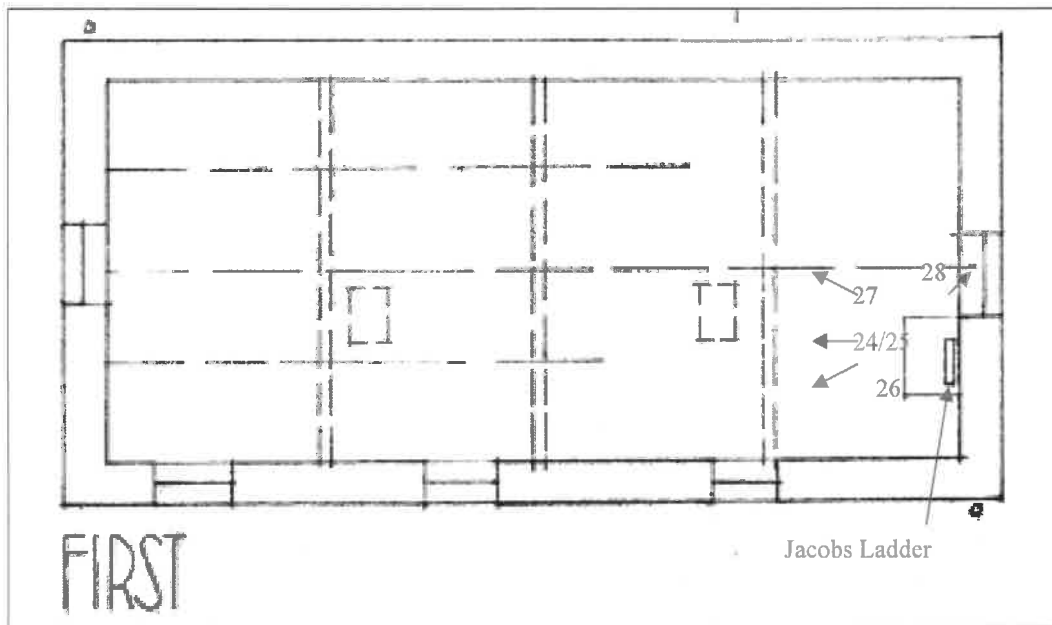


Figure 5. Location & direction of Barn A first floor photographs (Drawing J Wharton)

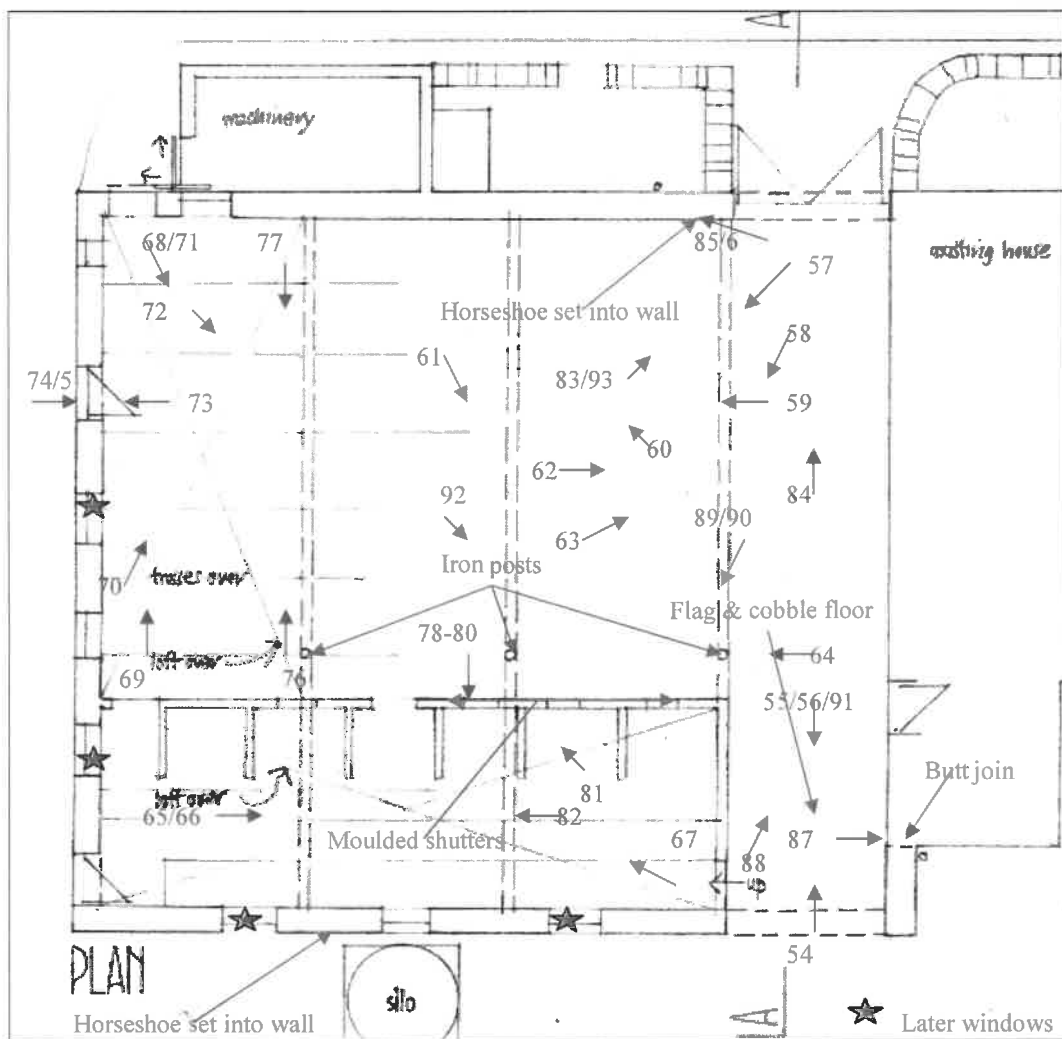


Figure 6. Location & direction of Barn B floor photographs (Drawing J Wharton)

### Photograph Catalogue

Site	Film Number	Film Type	Pixels
Barn A, Fish House Farm Chipping	1	Digital	14m

Frame	Facing	Scale	Description	Who/Date
1	SE	1m	General view of north side	JB 19/09/18
2	SE	1m	General view of north side	JB 19/09/18
3	S	1m	General view of north side	JB 19/09/18
4	SW	1m	General view of north side	JB 19/09/18
5	NW	1m	General view of south side	JB 19/09/18
6	W	1m	General view of eastern end	JB 19/09/18
7	NW	1m	General view of south side	JB 19/09/18
8	N	1m	General view of south side	JB 19/09/18
9	NE	1m	General view of south side	JB 19/09/18
10	E	1m	General view of western end	JB 19/09/18
11	NE	--	Detail of dressing on lintel	JB 19/09/18
12	NW	1m	Interior of westernmost ground floor room	JB 19/09/18
13	SW	1m	Interior of westernmost ground floor room	JB 19/09/18
14	NW	1m	Interior of central ground floor room	JB 19/09/18
15	N	1m	Interior of central ground floor room	JB 19/09/18
16	N	1m	Interior of central ground floor room	JB 19/09/18
17	SW	1m	Interior of central ground floor room	JB 19/09/18
18	SW	1m	Interior of central ground floor room	JB 19/09/18
19	W	1m	Interior of central ground floor room	JB 19/09/18
20	NW	1m	Interior of easternmost ground floor room	JB 19/09/18
21	N	1m	Interior of easternmost ground floor room	JB 19/09/18
22	SW	1m	Interior of easternmost ground floor room	JB 19/09/18
23	NW	1m	Interior of easternmost ground floor room	JB 19/09/18
24	W	1m	Roof space	JB 19/09/18
25	W	--	Roof space	JB 19/09/18
26	WSW	--	Roof space	JB 19/09/18
27	NW	--	Roof space	JB 19/09/18
28	NW	--	Forking hole in eastern gable from inside	JB 19/09/18
29	E	1m	Jacobs ladder in easternmost room	JB 19/09/18
30	E	1m	Jacobs ladder in easternmost room	JB 19/09/18
31	NE	1m	Cobbles in farmyard to south of Barn A	JB 19/09/18
32	N	1m	Cobbles between Barns A and B	JB 19/09/18
33	W	1m	Cobbles in farmyard to south of Barn A	JB 19/09/18

## Fish House Farm, Chipping, Ribble Valley. Historic Building Recording

<b>Site</b> Barn B, Fish House Farm	<b>Film Number</b>	<b>Film Type</b>	<b>Pixels</b>
Chipping	1	Digital	14m

<b>Frame</b>	<b>Facing</b>	<b>Scale</b>	<b>Description</b>	<b>Who/Date</b>
34	SW	1m	General view of north side	JB 19/09/18
35	SW	1m	General view of north side	JB 19/09/18
36	SSW	1m	General view of north side	JB 19/09/18
37	S	1m	General view of north side	JB 19/09/18
38	S	1m	General view of north side	JB 19/09/18
39	SE	1m	General view of north side	JB 19/09/18
40	SE	1m	General view of north side	JB 19/09/18
41	SE	1m	General view of western end	JB 19/09/18
42	SE	1m	General view of western end	JB 19/09/18
43	E	1m	General view of western end	JB 19/09/18
44	E	1m	General view of western end	JB 19/09/18
45	E	1m	General view of western end	JB 19/09/18
46	E	1m	General view of western end	JB 19/09/18
47	N	1m	General view of south side	JB 19/09/18
48	N	1m	General view of south side	JB 19/09/18
49	N	1m	General view of south side	JB 19/09/18
50	N	1m	General view of south side	JB 19/09/18
51	NW	1m	General view of south side	JB 19/09/18
52	N	1m	General view of south side, door open	JB 19/09/18
53	NW	1m	General view of south side, door open	JB 19/09/18
54	N	1m	Cobbles in cart porch	JB 19/09/18
55	S	1m	Cobbles in cart porch	JB 19/09/18
56	S	1m	Cobbles in cart porch	JB 19/09/18
57	SW	1m	General view of interior of Barn B	JB 19/09/18
58	SSW	1m	General view of interior of Barn B	JB 19/09/18
59	SW	--	General view of interior of roof, Barn B	JB 19/09/18
60	NW	1m	General view of interior of Barn B	JB 19/09/18
61	SE	1m	General view of interior of Barn B	JB 19/09/18
62	E	1m	General view of interior of Barn B	JB 19/09/18
63	NE	1m	General view of interior of Barn B	JB 19/09/18
64	W	1m	Detail of iron post & bracket in Barn B	JB 19/09/18
65	E	1m	General view of interior of concrete stalls	JB 19/09/18
66	E	1m	General view of interior of concrete stalls	JB 19/09/18
67	W	1m	General view of interior of concrete stalls	JB 19/09/18
68	SSE	1m	General view of interior of concrete stalls	JB 19/09/18
69	N	1m	General view of interior of concrete stalls	JB 19/09/18
70	NNE	1m	General view of interior of concrete stalls	JB 19/09/18
71	SSE	1m	General view of interior of concrete stalls	JB 19/09/18
72	SE	1m	General view of interior of concrete stalls	JB 19/09/18
73	W	1m	Detail of inside bead moulded door	JB 19/09/18
74	E	1m	Detail of outside bead moulded door	JB 19/09/18
75	E	1m	Detail of handle on bead moulded door	JB 19/09/18
76	NNE	1m	General view of interior of concrete stalls	JB 19/09/18
77	S	1m	General view of interior of concrete stalls	JB 19/09/18



Frame	Facing	Scale	Description	Who/Date
78	S	1m	Detail of bead moulded wooden shutters, open	JB 19/09/18
79	SE	1m	Detail of bead moulded wooden shutters, open	JB 19/09/18
80	S	1m	Detail bead moulded wooden shutters, closed	JB 19/09/18
81	NW	--	General view of interior of roof space	JB 19/09/18
82	W	--	General view of interior of roof space	JB 19/09/18
83	NE	--	General view of interior of roof space	JB 19/09/18
84	N	1m	Inside of northern cart doors	JB 19/09/18
85	W	1m	Horseshoe set into wall as hitching point	JB 19/09/18
86	W	1m	Horseshoe set into wall as hitching point	JB 19/09/18
87	E	1m	Butt join in wall of cart porch	JB 19/09/18
88	NE	1m	Detail of cobbles in cart porch	JB 19/09/18
89	SW	1m	General view of interior of Barn B	JB 19/09/18
90	SW	1m	General view of interior of Barn B	JB 19/09/18
91	S	1m	Detail of cobbles in cart porch	JB 19/09/18
92	SE	1m	General view of interior of Barn B	JB 19/09/18
93	NE	--	General view of interior of roof space	JB 19/09/18
94	S	--	General view to south	JB 19/09/18
95	S	--	General view to south	JB 19/09/18
96	W	--	General view along southern elevation	JB 19/09/18

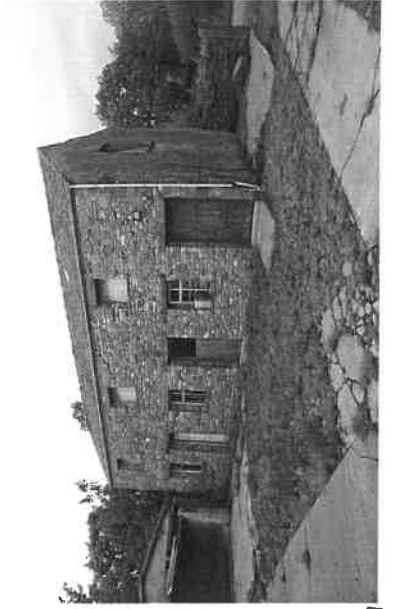




9



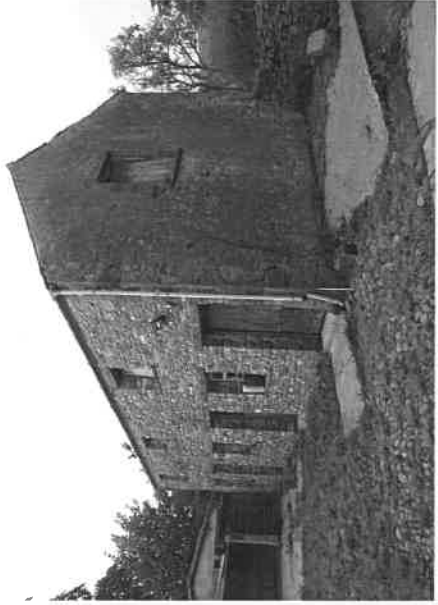
8



7



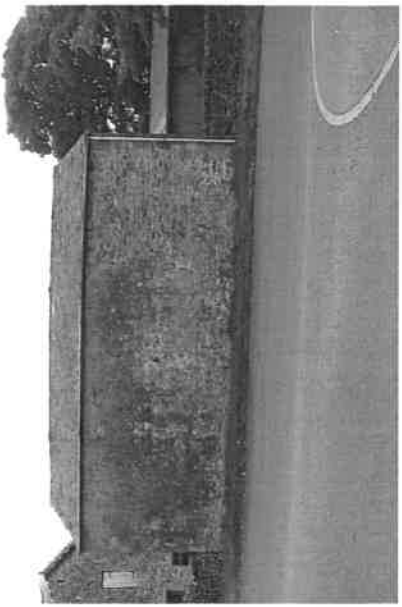
6



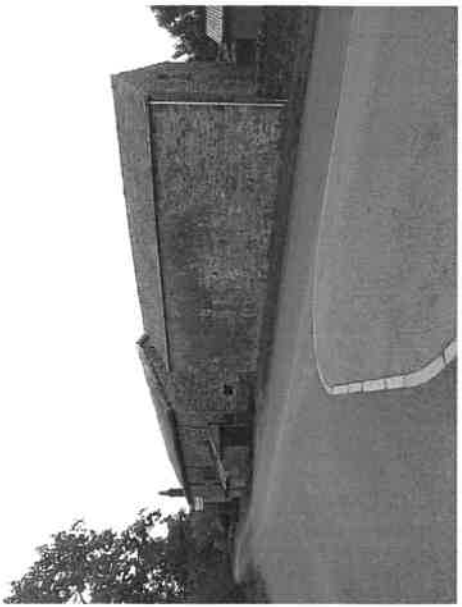
5



4



3



2



1





8



7



18



15



14



13



12



11



10





21



22



23



24



25



26



27



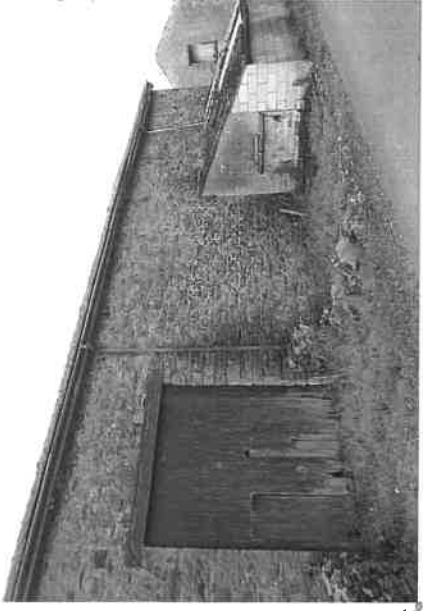
28



29



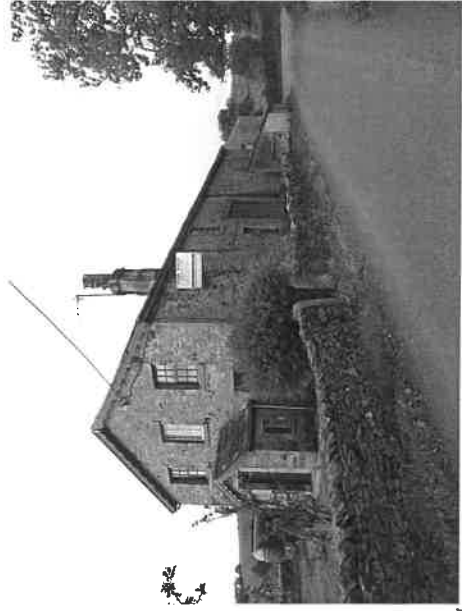




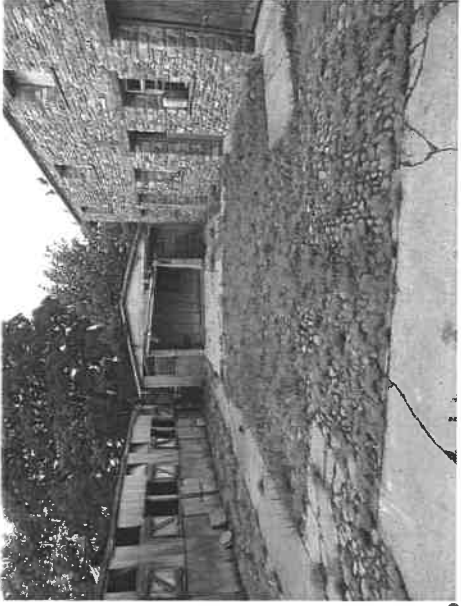
31



32



34



33



32



33



30



32

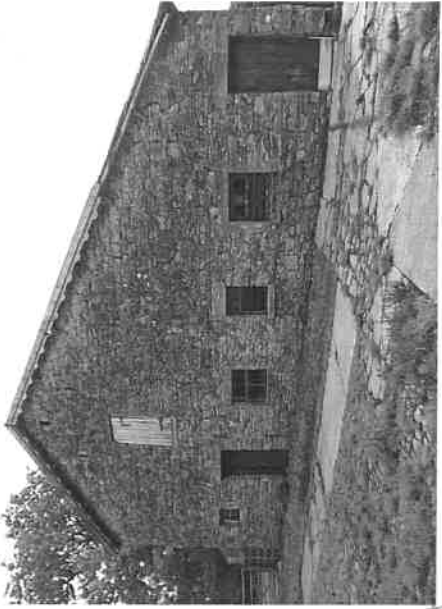


31





43



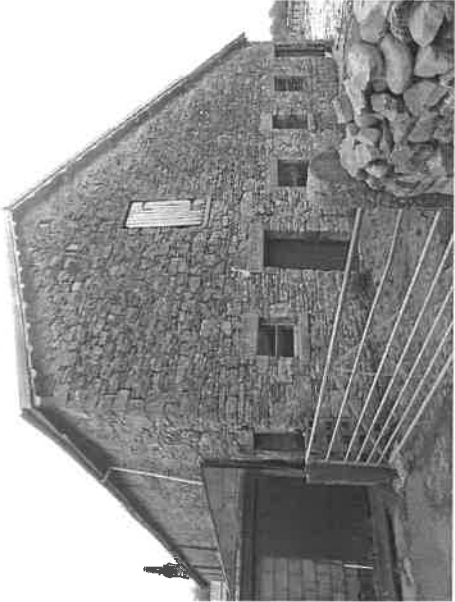
44



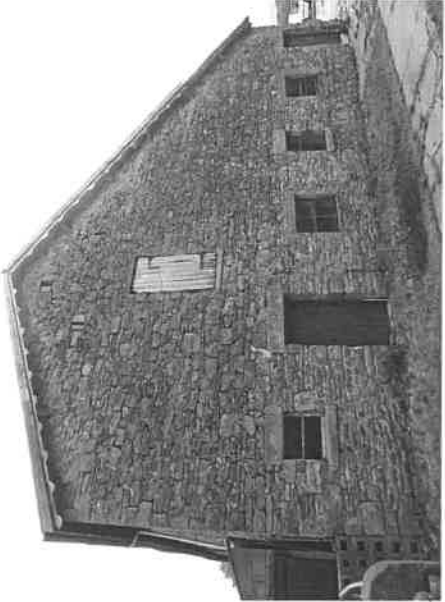
45



46



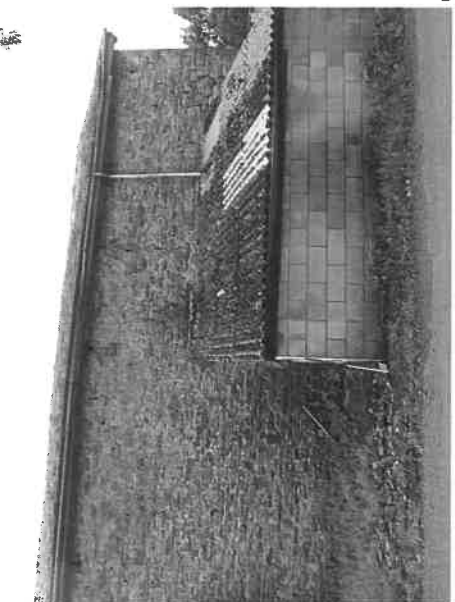
47



48



49



50



51





51



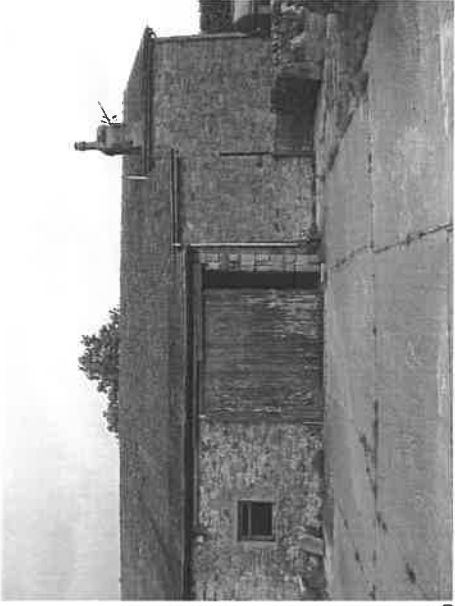
53



52



54



55



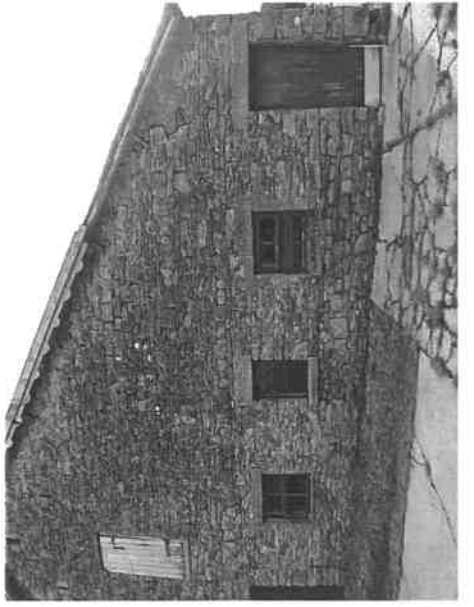
56



57



58



59





3



3



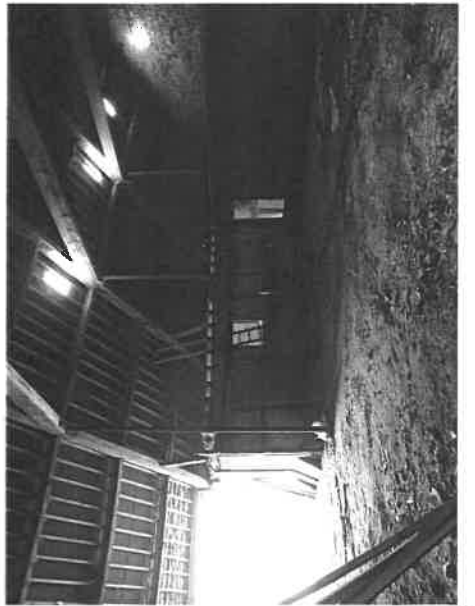
19



3



3



3



3



3



3







72



71



70



69



68



67



66



65



64





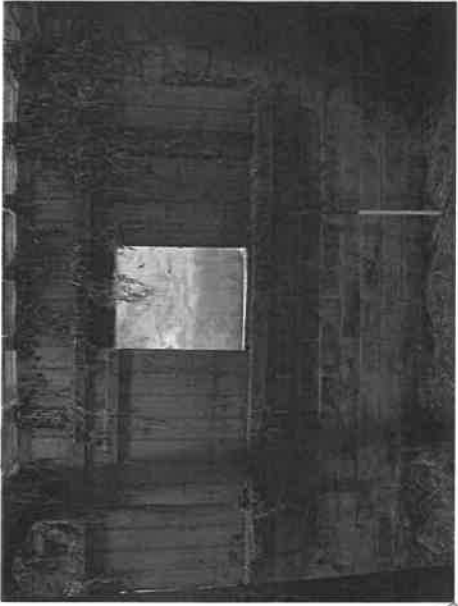
88



88



89



89



89



89



90

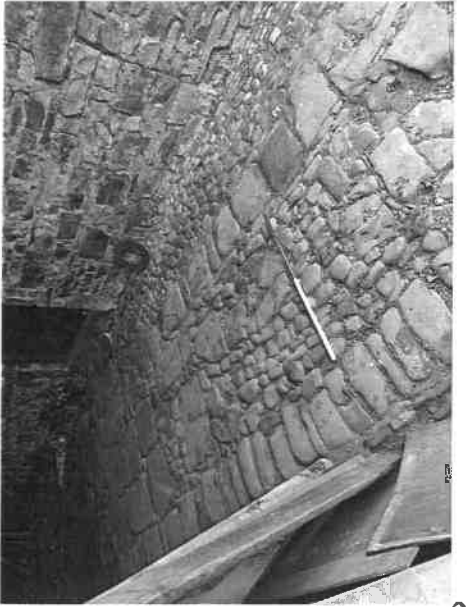


90



90





88



85



86



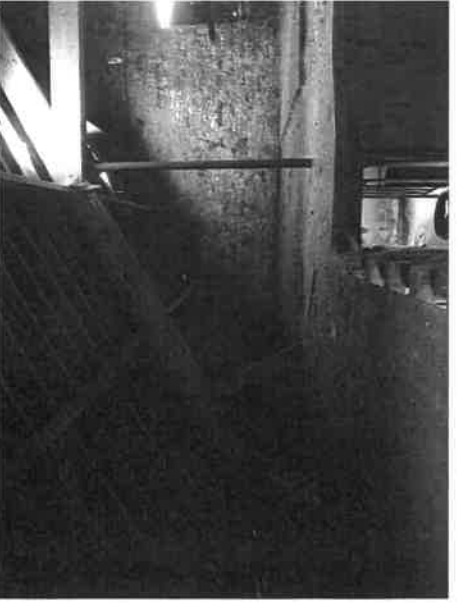
88



86



88



82



83



84





014



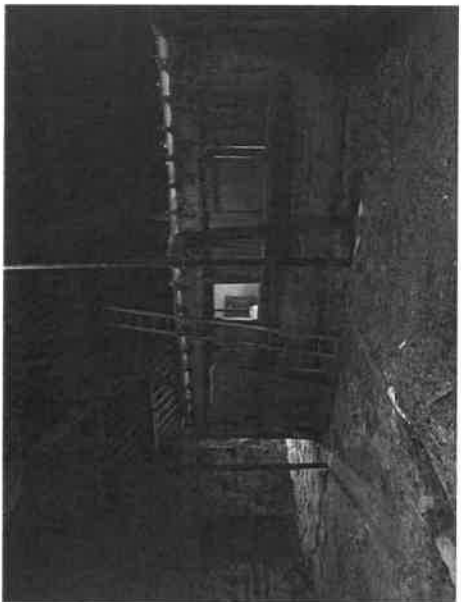
015



016



017



018



019

