

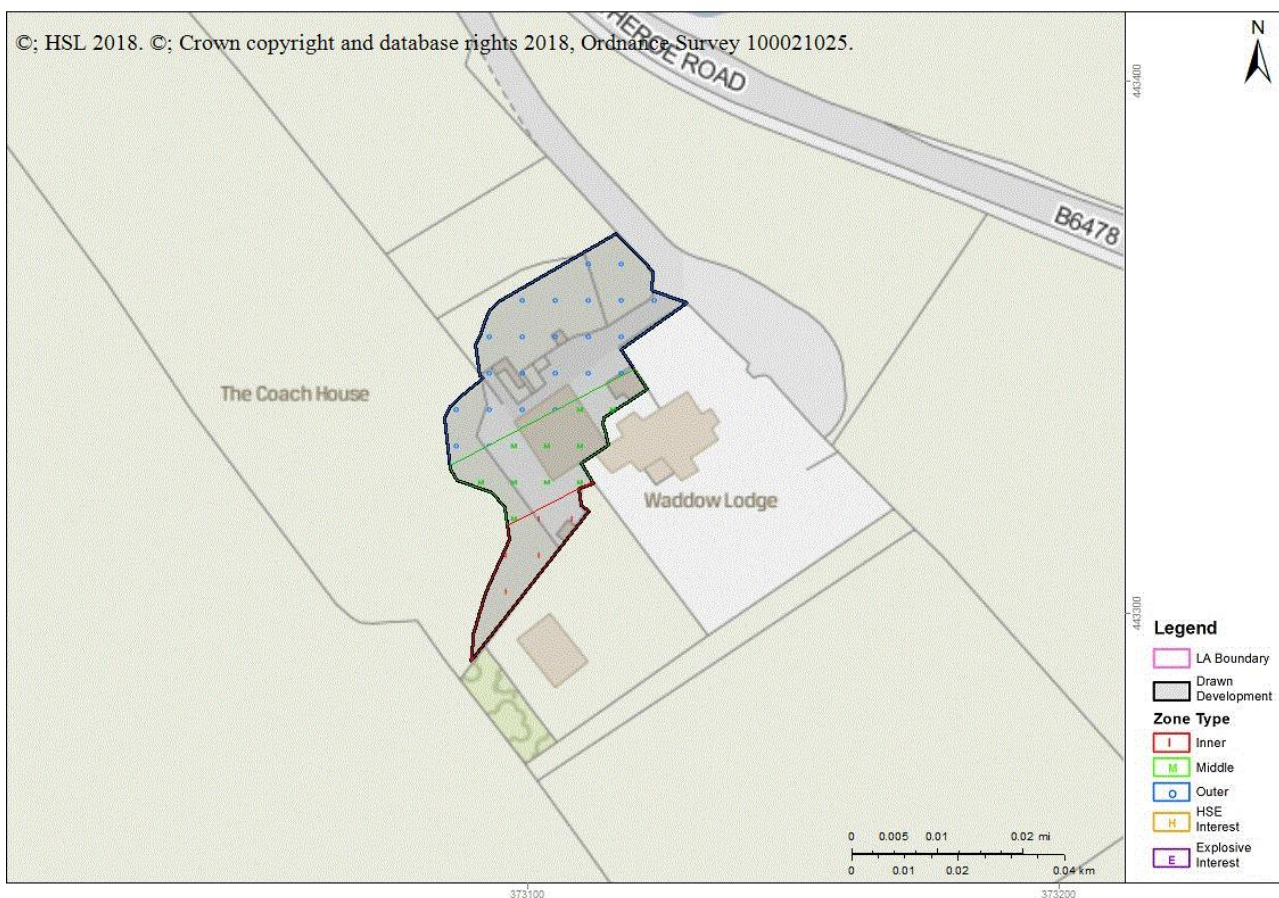
## Advice : HSL-181128104700-101 Crosses Consultation Zone

Please enter further details about the proposed development by continuing with the enquiry on the HSE's Planning Advice Web App from the Previous Enquiries tab either now or at a later time, unless the Web App has stopped the process and notified you to contact HSE.

**Your Ref:** 3/2018/1011

**Development Name:** The Coach House, 4 Clitheroe Road, Waddington BB7 3HH

**Comments:** Change of use of agricultural land to garden to form extension of domestic curtilage.



The proposed development site which you have identified currently lies within the consultation distance (CD) of at least one major hazard site and/or major accident hazard pipeline; HSE needs to be consulted on any developments on this site.

This advice report has been generated using information supplied by Jane Tucker at Ribble Valley District (B) on 28 November 2018.

You will also need to contact the pipeline operator as they may have additional constraints on development near their pipeline.

- 6710\_ Sabic UK Petrochemicals Ltd

HSL/HSE accepts no liability for the accuracy of the pipeline routing data received from a 3rd party. HSE/HSL also accepts no liability if you do not consult with the pipeline operator.

You may wish to contact HSE's Planning Advice team to discuss the above enquiry result on 0203 028 3708 or by email at [lupenquiries@hsl.gsi.gov.uk](mailto:lupenquiries@hsl.gsi.gov.uk).