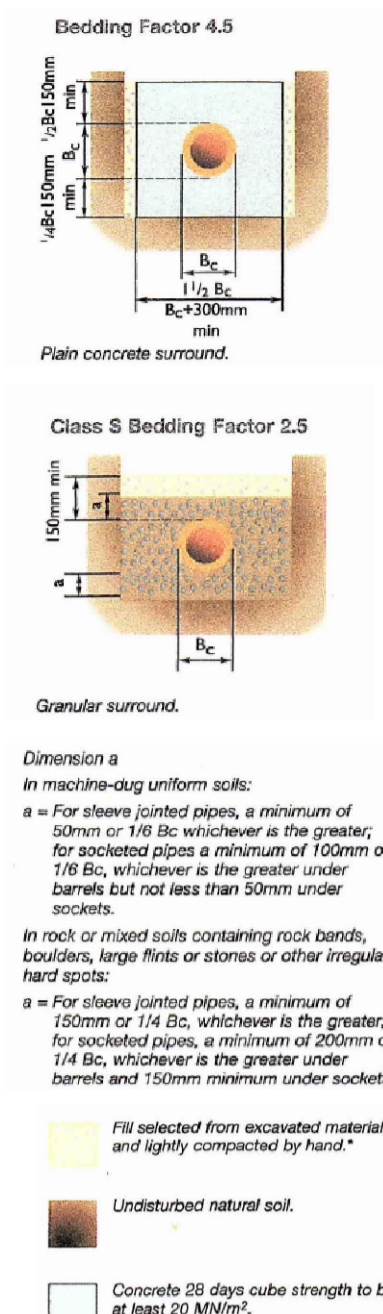
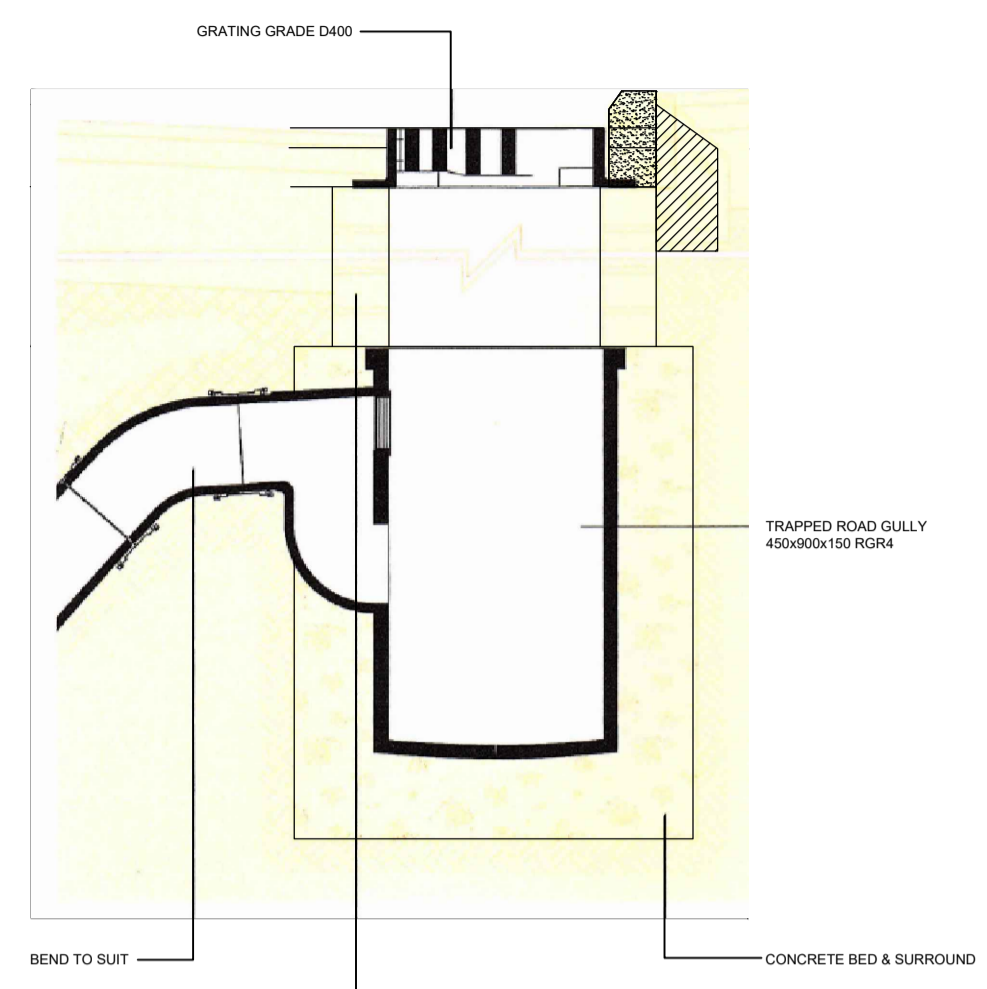


TYPICAL MANHOLE DETAIL - TYPE B
MAX DEPTH FROM COVER LEVEL TO SOFFIT OF PIPE 3.0m

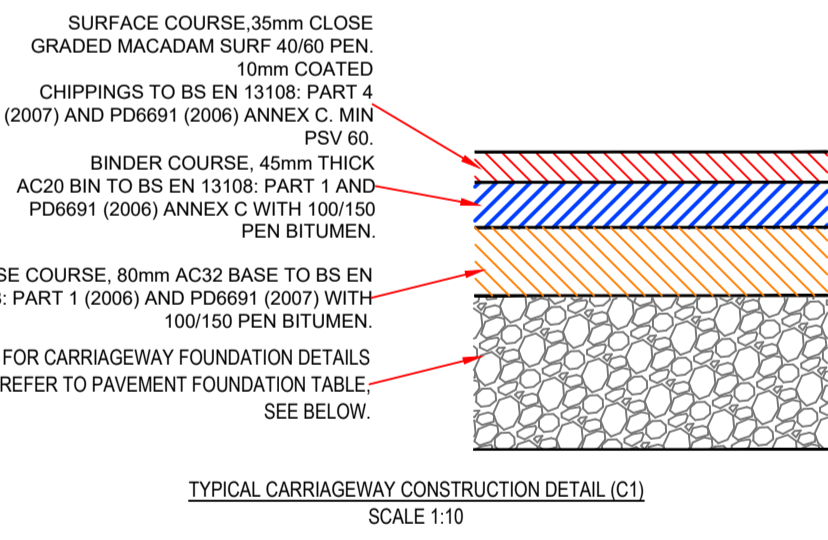
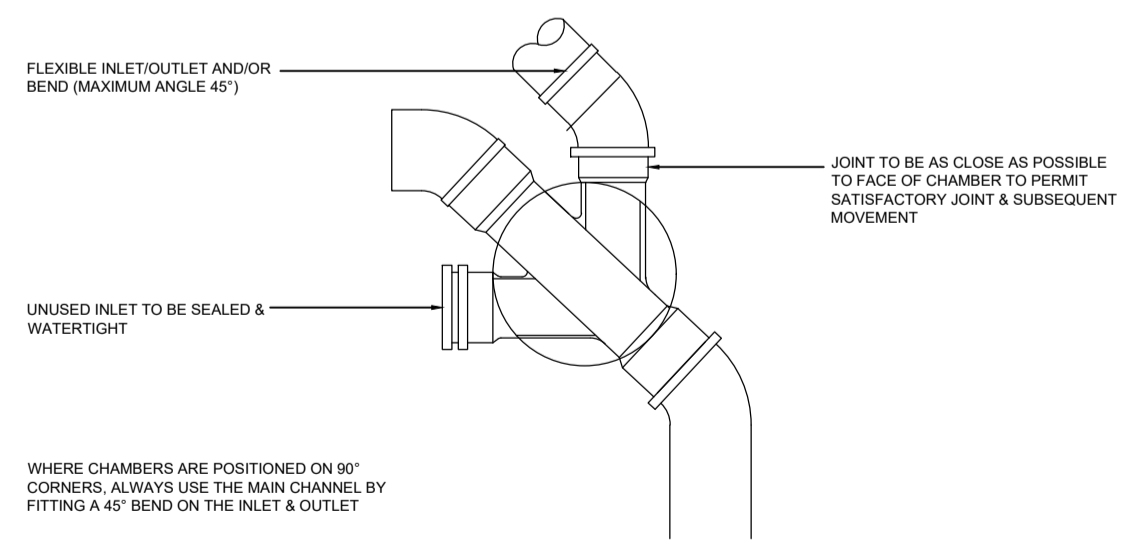
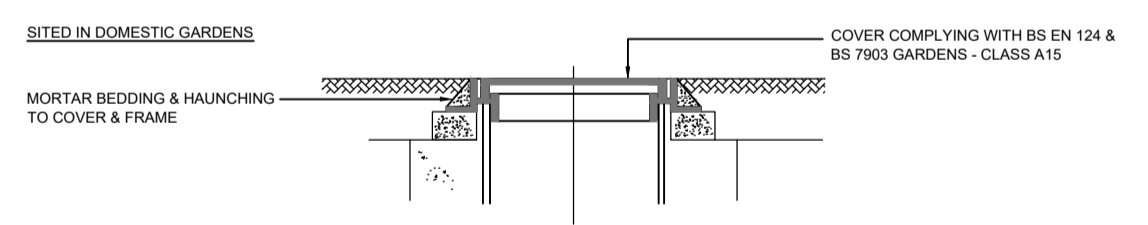
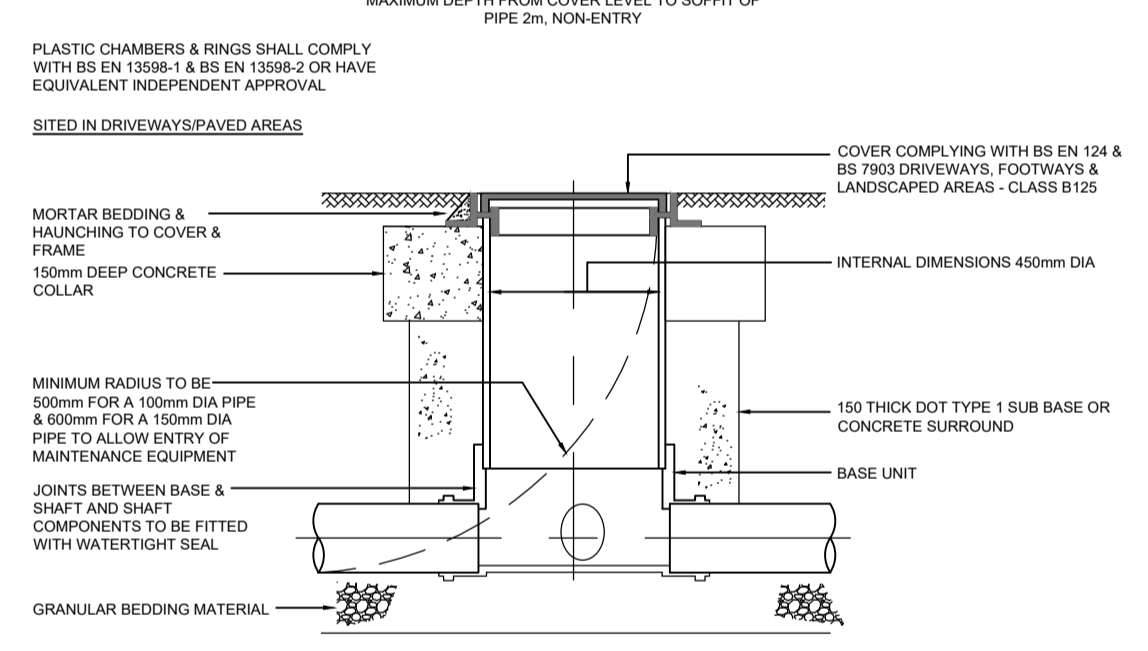


PIPE BEDDING DETAILS



ROAD GULLY DETAIL

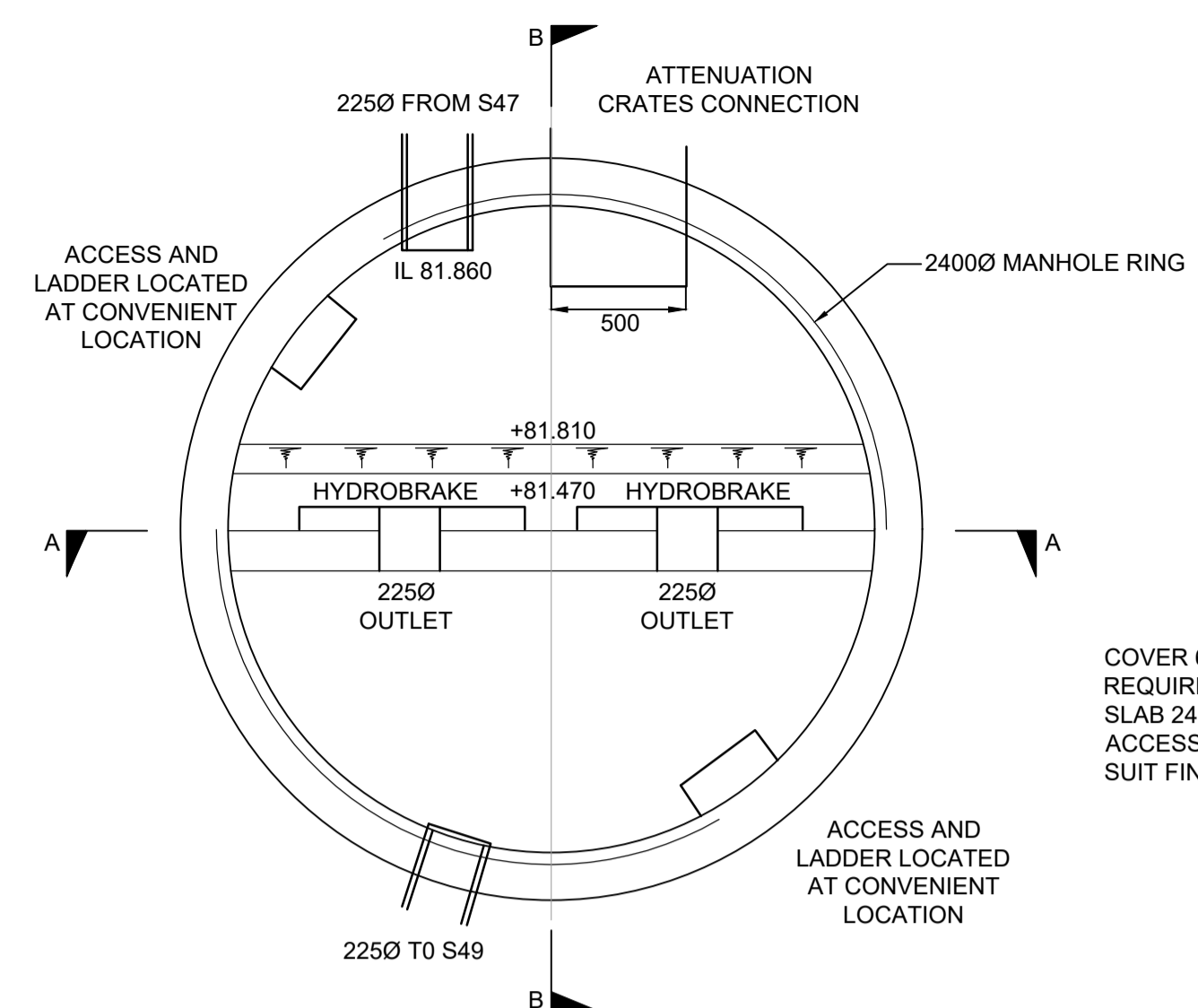
TYPICAL INSPECTION CHAMBER DETAIL - TYPE 4
(FLEXIBLE MATERIAL DETAIL)



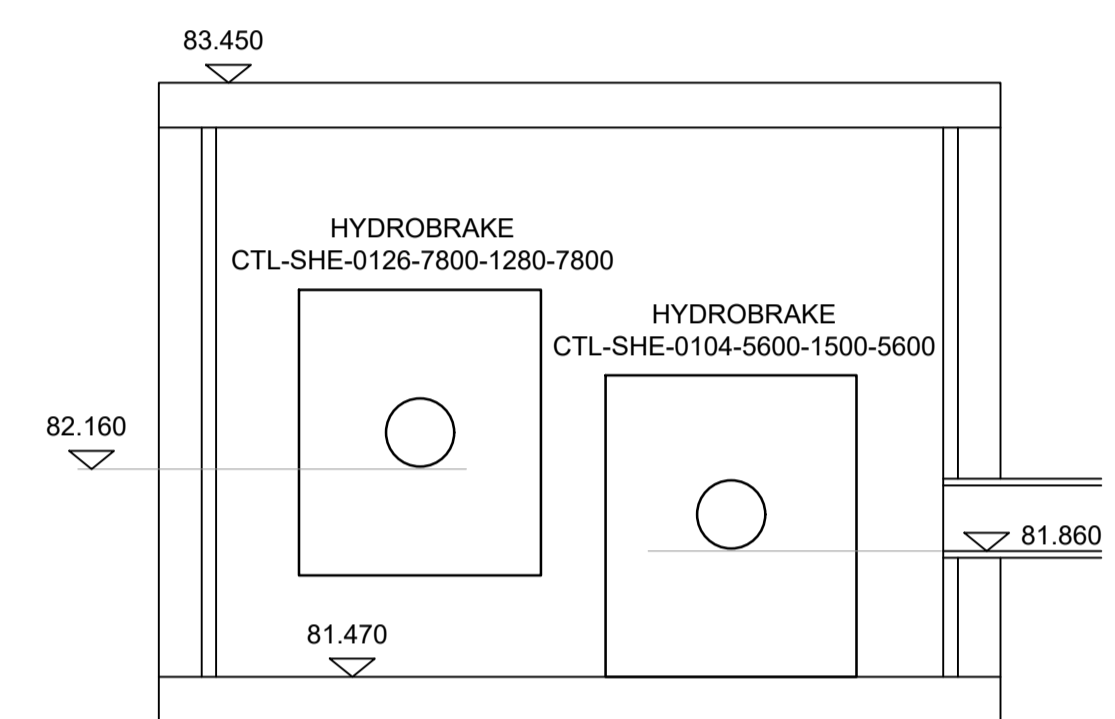
CBR TABLE:

CBR	<2%	2%	3%	4%	5%	15%	>15%
CAPPING (mm)	600	450	350	300	250	150	0
SUB BASE (mm)	150	150	150	150	150	150	150
TOTAL THICKNESS (mm)	750	600	500	450	400	300	150
SUB BASE DESIGN ONLY (TOTAL THICKNESS (mm))	N/A	N/A	300	260	225	300	150

REFER TO DMRB VOL 7 EC 2 PART 2 HD 25/94
FIG 3.1 FOR MORE DETAILS ON CBR TABLE

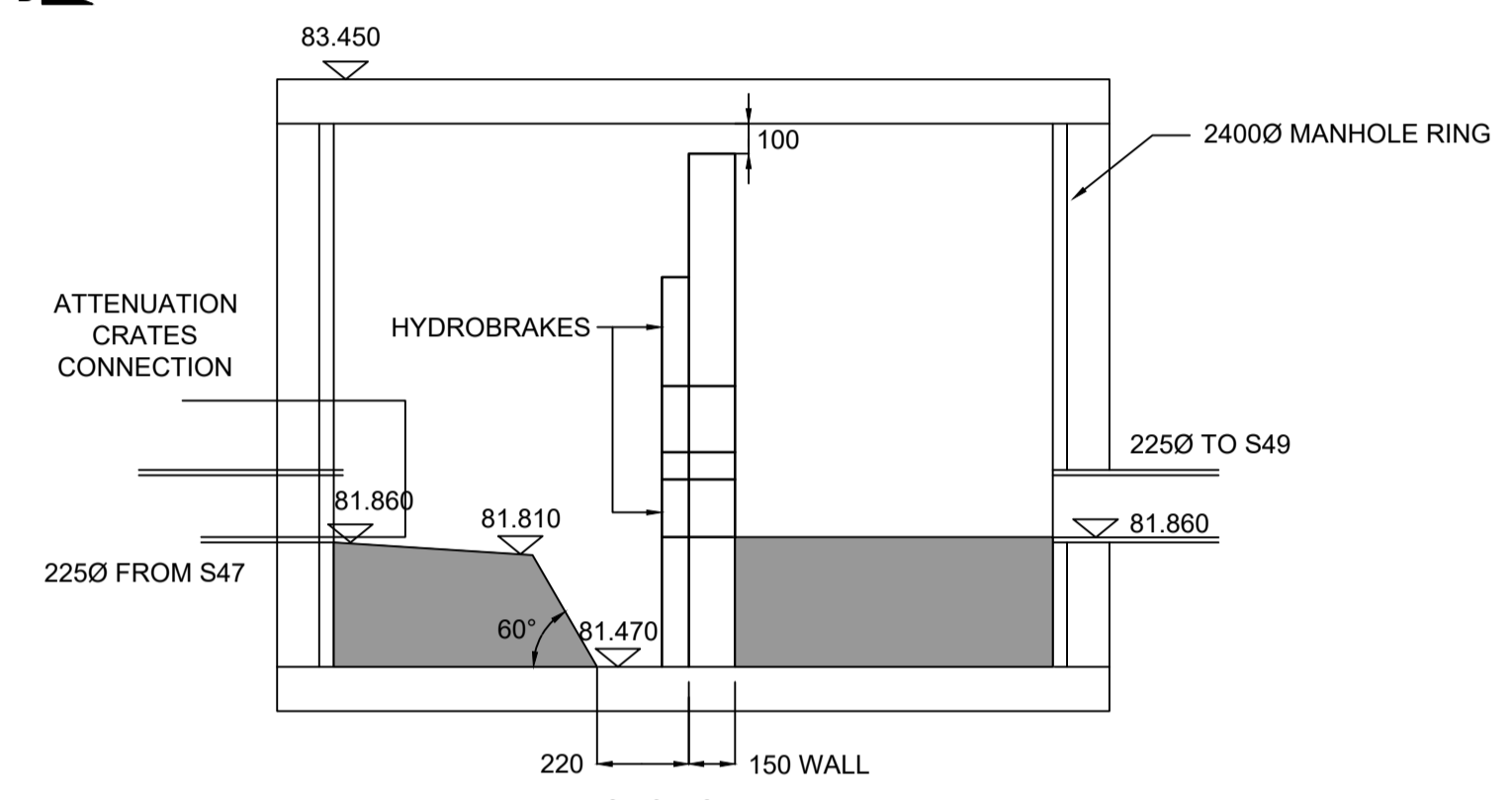


COVER 600x600 TWO OPENINGS
REQUIRED IN MANHOLE COVER
SLAB 2400 DIA MANHOLE RING.
ACCESS COVERS FINAL LEVEL TO
SUIT FINISHED GROUND LEVEL.

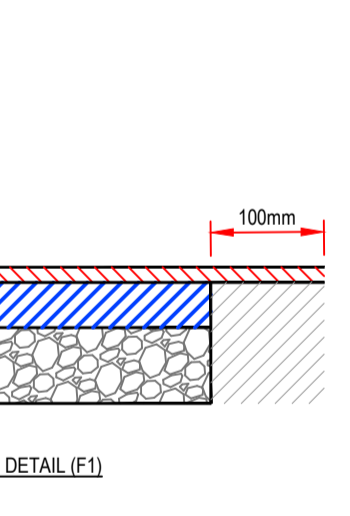


SECTION A-A

MANHOLE S48 HYDROBRAKE
CHAMBER



SECTION B-B



TYPICAL FOOTWAY CONSTRUCTION TIE DETAIL (F1)
SCALE 1:10

						OAKMERE HOMES		DRAINAGE DETAILS	
						CHATBURN ROAD SOUTH		SCALE: @A1 REV A	
Rev	Date	Description	Drn	Chk	App			19.664 - 530	
A	22.04.20	GENERAL REVISIONS	SB	BF	BF				
-	11.04.20	ORIGINAL ISSUE	SB	BF	BF				

REFORD
Consulting Engineers Limited

7 Hall Road, Fulwood, Preston, PR2 9GD
Mobile: 07970 265 334
Email: r.a.ford@virginmedia.com