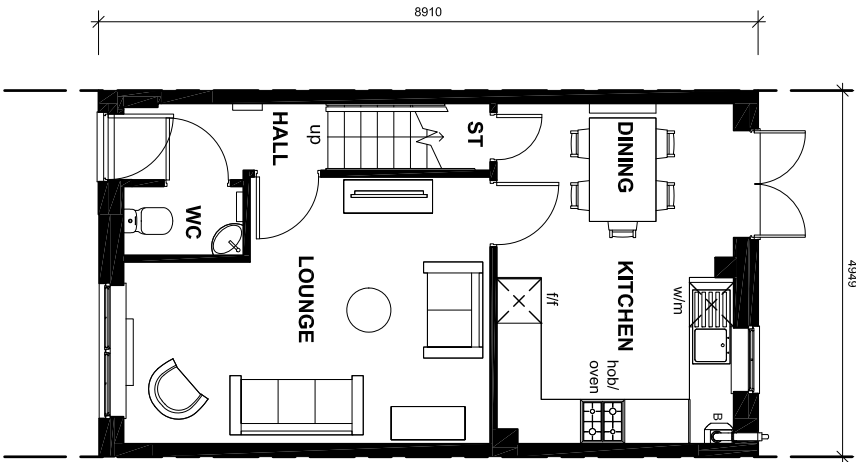
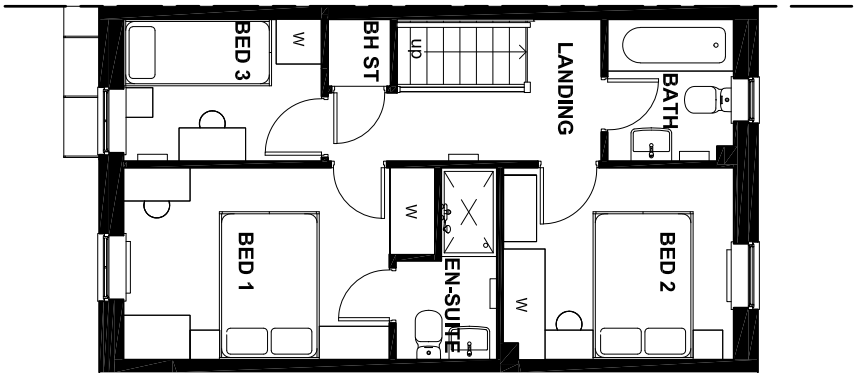


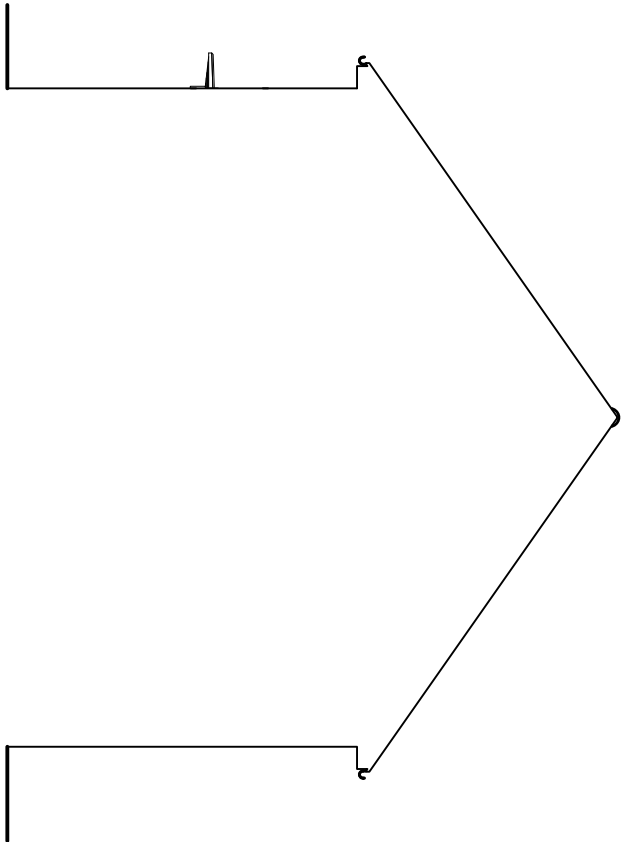
GROUND FLOOR



FIRST FLOOR



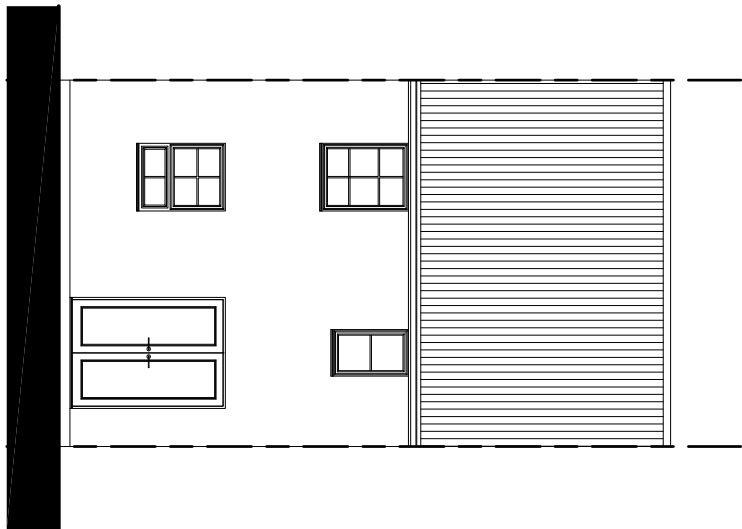
SIDE ELEVATION



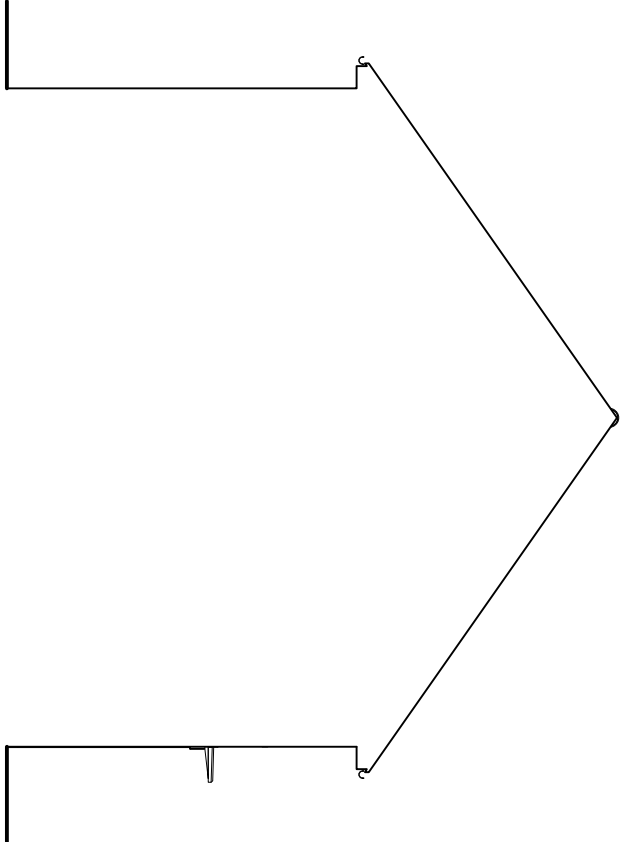
FRONT ELEVATION



REAR ELEVATION



SIDE ELEVATION



Floor Area:830 ft² / 77.1 m²

Sales Name: Maidstone Classic (Mid)

House Type Code: BMAI 00CI

Spec:AMBASSADOR Drawing No:01 Date: April 2016

Drawn: GDT Checked: GDT Scale: 1 : 100 @A3

WARNING TO HOUSE-PURCHASERS

Buyers are warned that this is a working drawing and the contents of this drawing may be subject to change during the progress of the build process. The layout form, content, and dimensions specified are included for general guidance only. Whilst we make every effort to ensure our drawings are up to date there may from time to time be an unavoidable delay in updating these due to changes in regulations and/or re-planning. Purchasers are advised to check with Sales Adviser whether any alterations have been made to this drawing. The contents of this drawing do not constitute a contract, part of any contract or warranty unless specifically incorporated into the contract. They should not be relied upon for the purposes of entering into a contract to purchase any property.

Planning

Rev	Description	Date
B	Refer to Data Sheet for full revision description	Sept 2017
C	Refer to Data Sheet for full revision description	Mar 2018
D	Refer to Data Sheet for full revision description	Sept 2018



BARRATT DEVELOPMENTS PLC