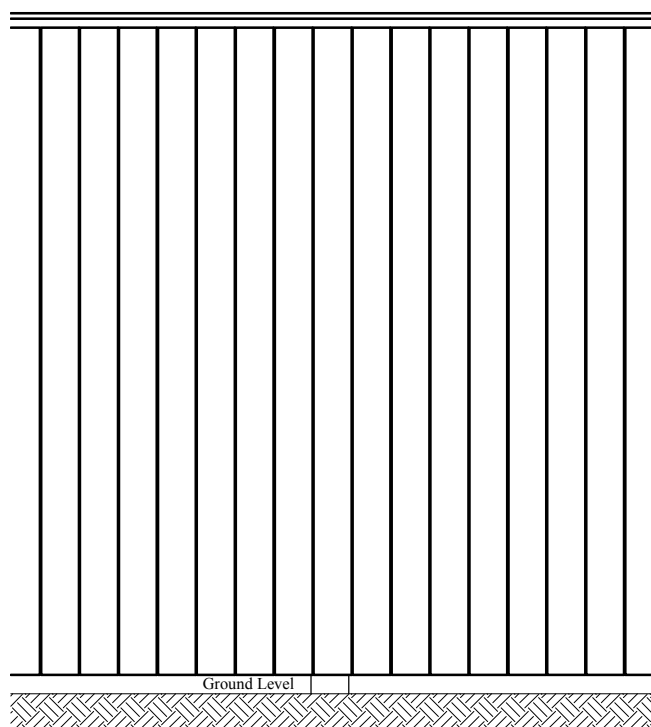
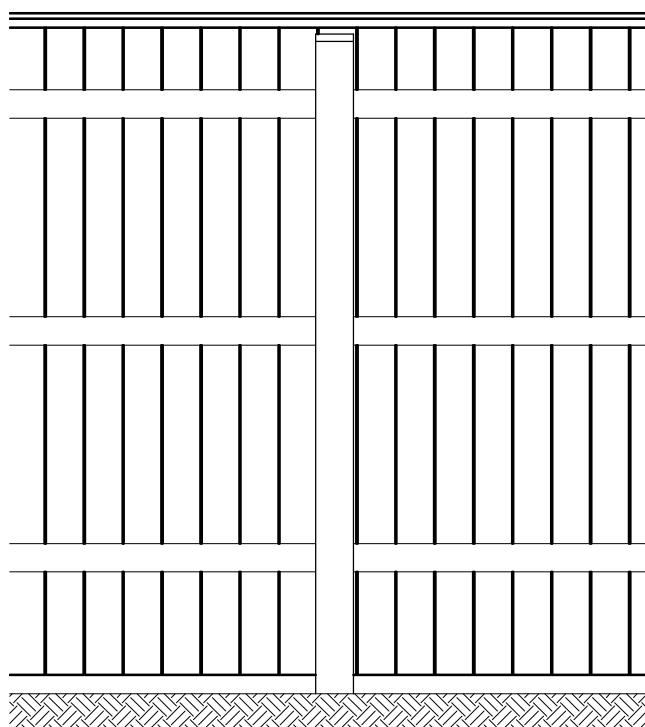


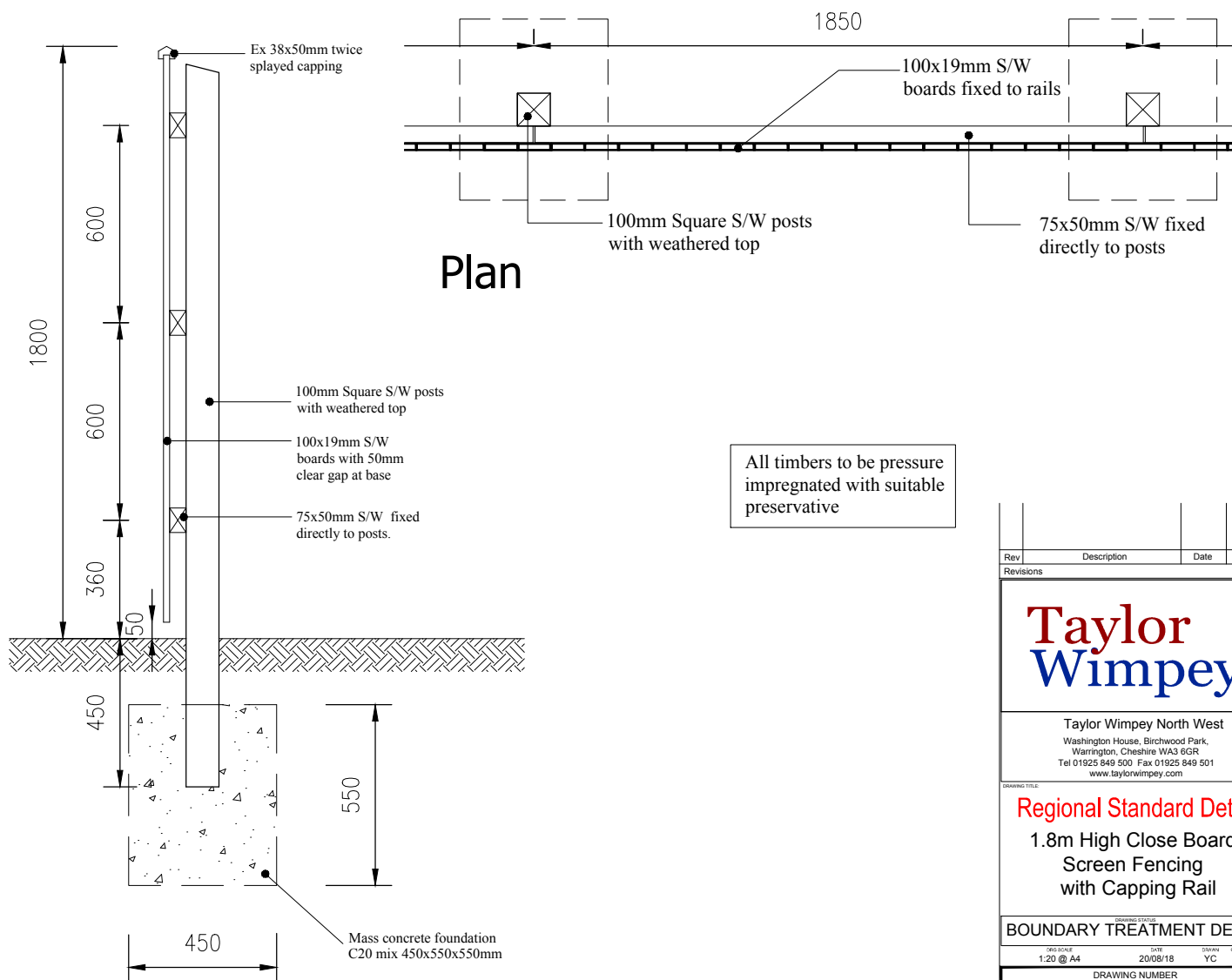
SF35 - 1.8m Close Boarded Screen Fence with Capping Rail



Front Elevation



Rear Elevation



Rev	Description	Date	Initial
Revisions			
Taylor Wimpey Taylor Wimpey North West Washington House, Birchwood Park, Warrington, Cheshire WA3 5GR Tel 01925 649 500 Fax 01925 649 501 www.taylorwimpey.com			
Regional Standard Detail 1.8m High Close Board Screen Fencing with Capping Rail			
BOUNDARY TREATMENT DETAIL			
SCALE	DATE	DRAWN	CHECKED BY
1:20 @ A4	20/08/18	YC	-
DRAWING NUMBER			
REV CODE	DRAWING CODE	DRAWING NO	REVISION
-	SF	35	-