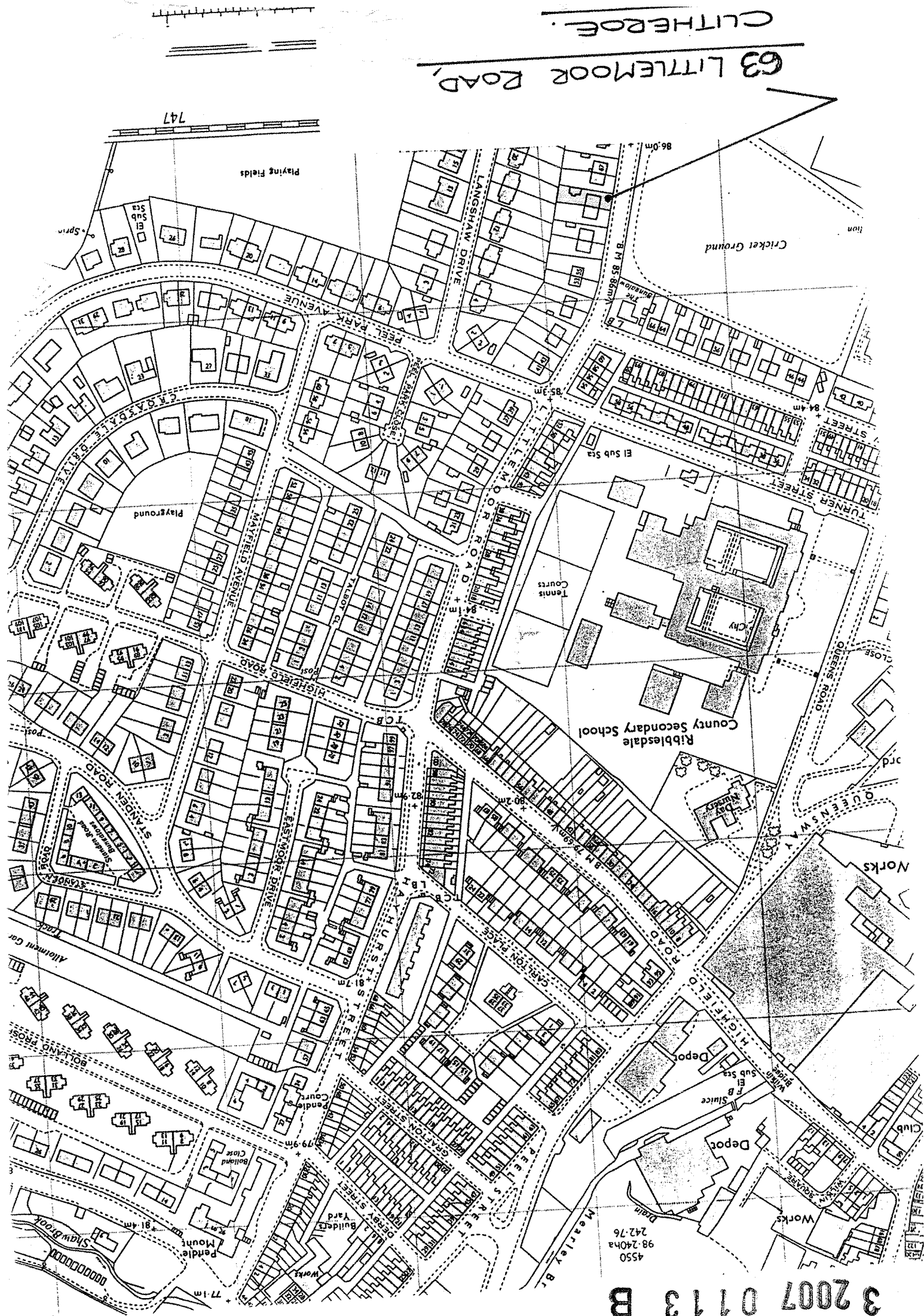


3 2007 0113 B



63 LITTLEMOOR ROAD,
CLITHEROE.

4550
98 240ha
242.76

Ribblesdale County Secondary School

Cricket Ground

Playing Fields

Playground

Depot

Depot

Depot

Depot

Depot

Depot

Depot

Depot

Depot

Depot

Depot

Depot

Depot

Depot

Depot

Depot

Depot

Depot

Depot

Depot

Depot

Depot

Depot

Depot

Depot

Depot

Depot

Depot

Depot

Depot

Depot

Depot

Depot

Depot

Depot

Depot

Depot

Depot

Depot

Depot

Depot

Depot

Depot

Depot

Depot

Depot

Depot

Depot

Depot

Depot

Depot

Depot

Depot

Depot

Depot

Depot

Depot

Depot

Depot

Depot

Depot

Depot

Depot

Depot

Depot

Depot

Depot

Depot

Depot

Depot

Depot

Depot

Depot

Depot

Depot

Depot

Depot

Depot

Depot

Depot

Depot

Depot

Depot

Depot

Depot

Depot

Depot

Depot

Depot

Depot

Depot

Depot

Depot

Depot

Depot

Depot

Depot

Depot

Depot

Depot

Depot

Depot

Depot

Depot

Depot

Depot

Depot

Depot

Depot

Depot

Depot

Depot

Depot

Depot

Depot

Depot

Depot

Depot

Depot

Depot

Depot

Depot

Depot

Depot

Depot

Depot

Depot

Depot

Depot

Depot

Depot

Depot

Depot

Depot

Depot

Depot

Depot

Depot

Depot

Depot

Depot

Depot

Depot

Depot

Depot

Depot

Depot

Depot

Depot

Depot

Depot

Depot

Depot

Depot

Depot

Depot

Depot

Depot

Depot

Depot

Depot

Depot

Depot

Depot

Depot

Depot

Depot

Depot

Depot

Depot

Depot

Depot

Depot

Depot

Depot

Depot

Depot

Depot

Depot

Depot

Depot

Depot

Depot

Depot

Depot

Depot

Depot

Depot

Depot

Depot

Depot

Depot

Depot

Depot

Depot

Depot

Depot

Depot

Depot

Depot

Depot

Depot

Depot

Depot

Depot

Depot

Depot

Depot

Depot

Depot

Depot

Depot

Depot

Depot

Depot

Depot

Depot

Depot

Depot

Depot

Depot

Depot

Depot

Depot

Depot

Depot

Depot

Depot

Depot

Depot

Depot

Depot

Depot

Depot

Depot

Depot

Depot

Depot

Depot

Depot

Depot

Depot

Depot

Depot

Depot

Depot

Depot

Depot

Depot

Depot

Depot

Depot

Depot

Depot

Depot

Depot

Depot

Depot

Depot

Depot

Depot

Depot

Depot

Depot

Depot

Depot

Depot

Depot

Depot

Depot

Depot

Depot

Depot

Depot

Depot

Depot

Depot

Depot

Depot

Depot

Depot

Depot

Depot

Depot

Depot

Depot

Depot

Depot

Depot

Depot

Depot

Depot

Depot

Depot

Depot

Depot

Depot

Depot

Depot

Depot

Depot

Depot

Depot

Depot

Depot

Depot

Depot

Depot

Depot

Depot

Depot

Depot

Depot

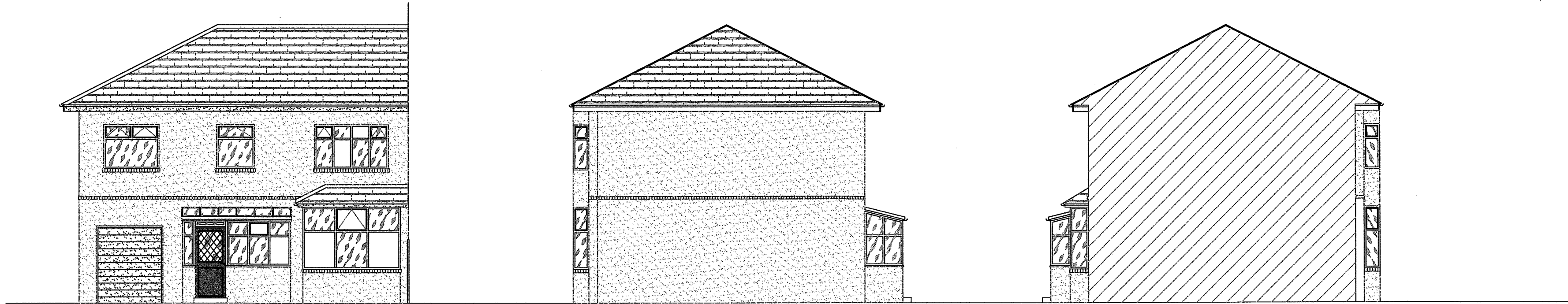
Depot

Depot

Depot

Depot

EXISTING ELEVATIONS

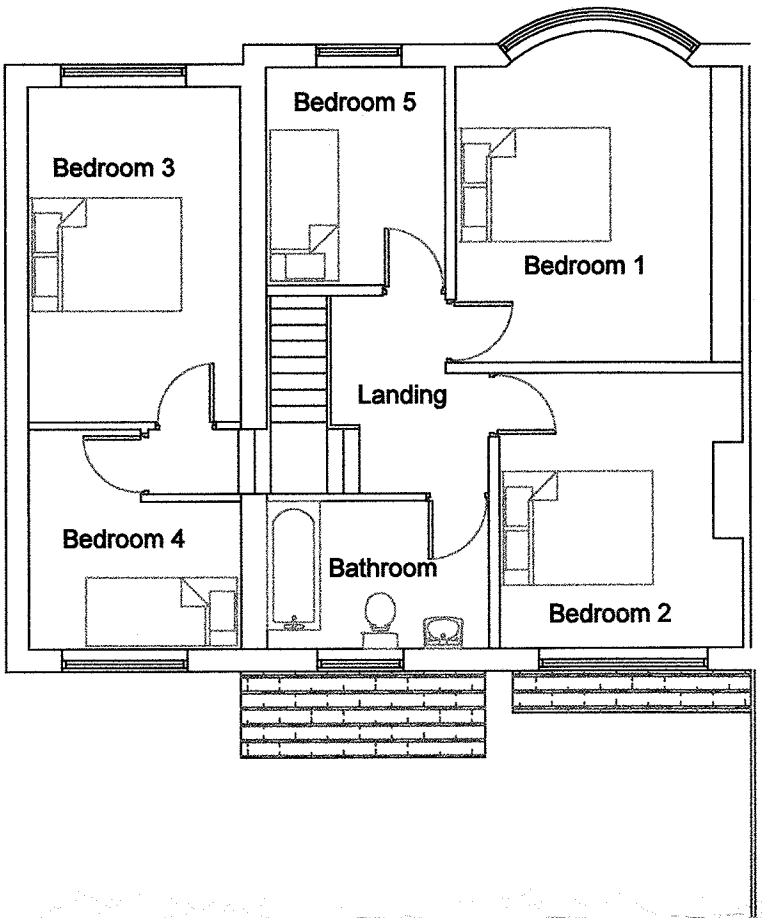
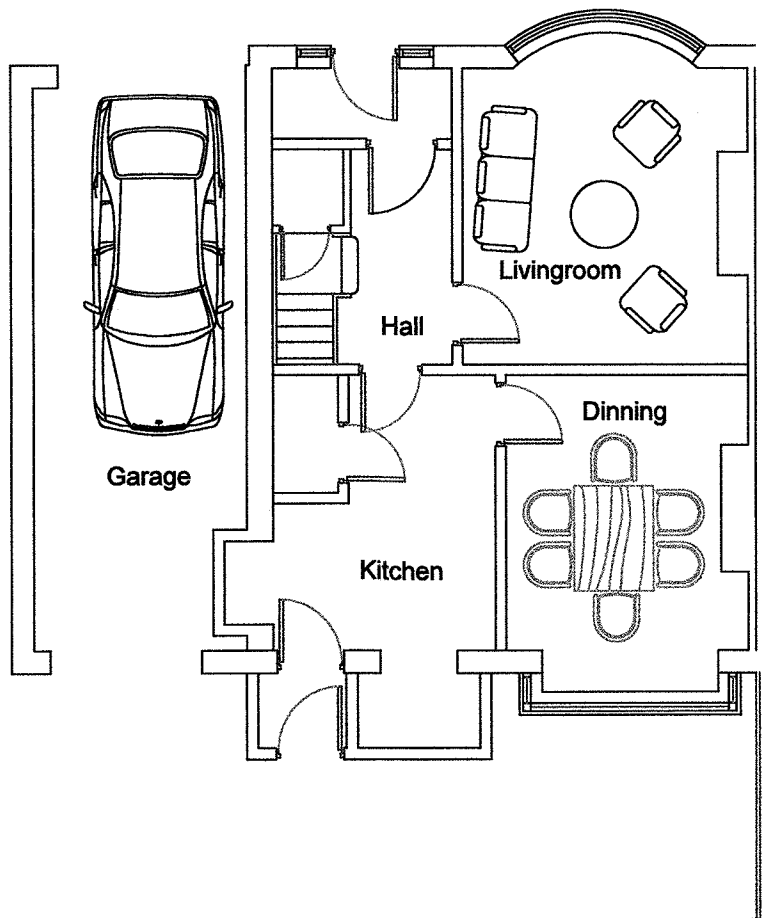


EXISTING PLANS

EXISTING REAR ELEVATION (West)

PROPOSED SIDE ELEVATION (South)

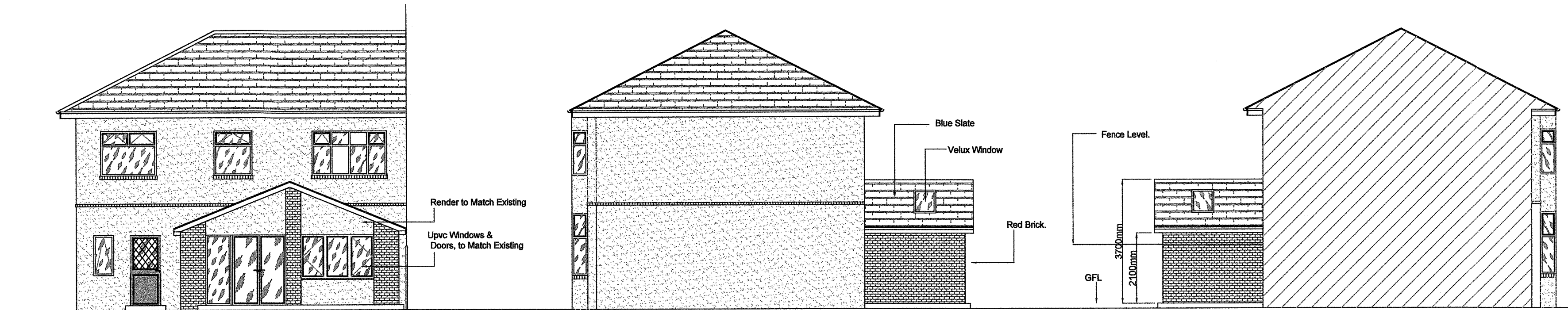
PROPOSED SIDE ELEVATION (North)



PROPOSED FLOOR PLAN

SCALE = 1: 100

PROPOSED ELEVATIONS

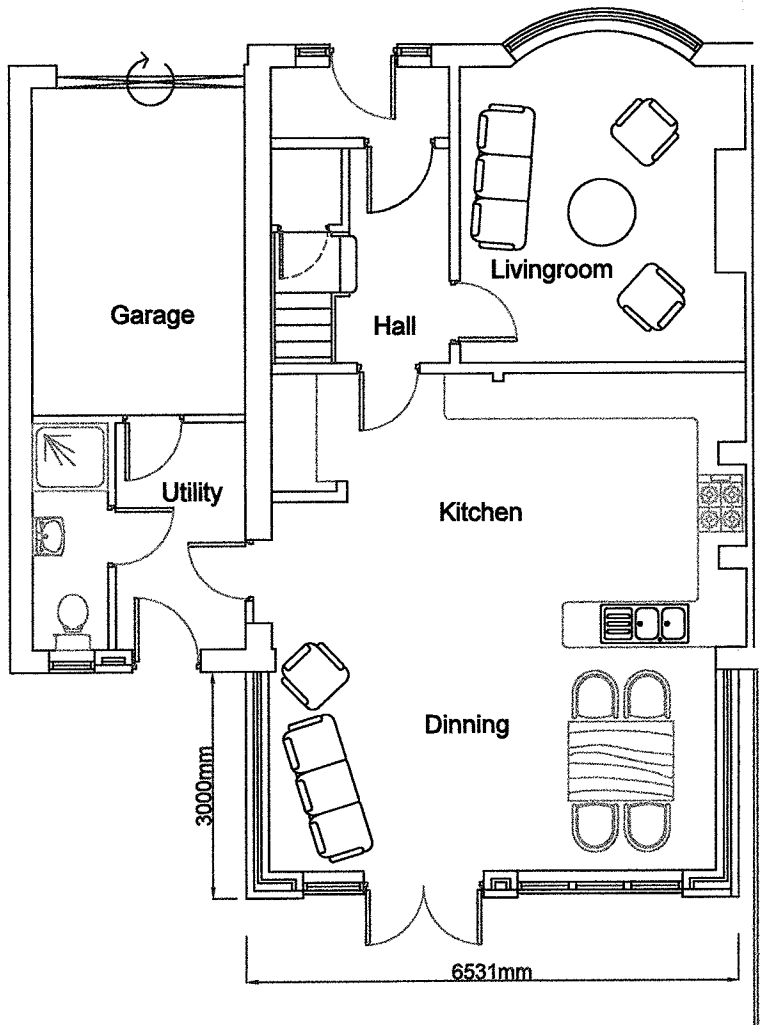


PROPOSED REAR ELEVATION (West)

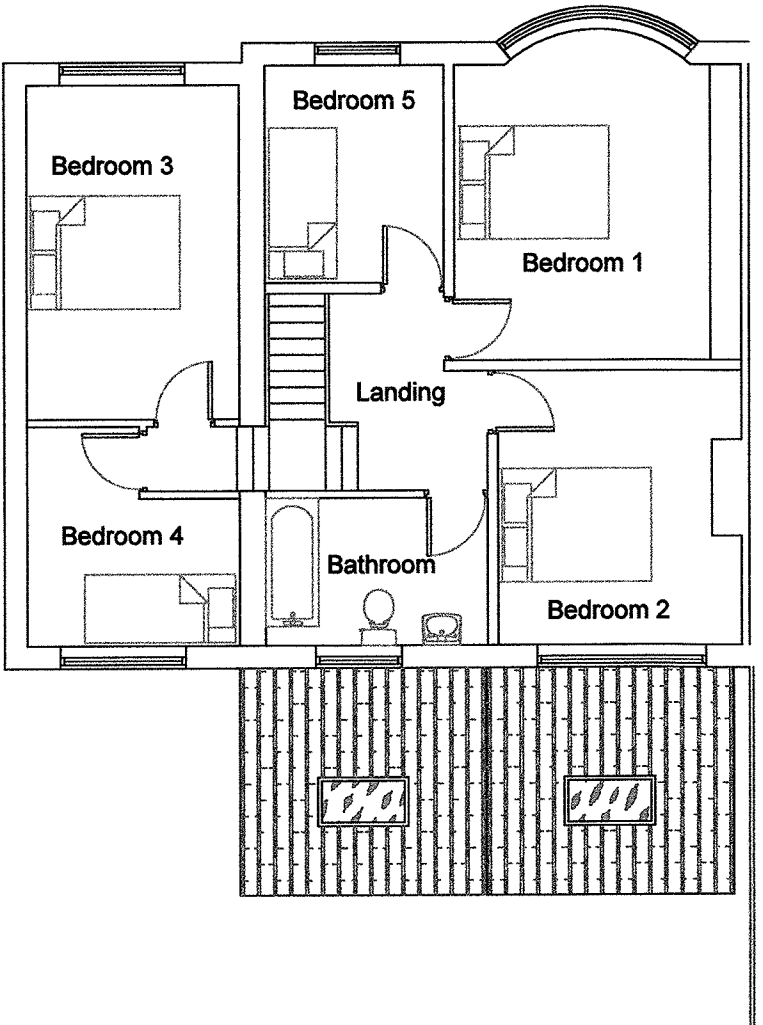
PROPOSED SIDE ELEVATION (South)

PROPOSED SIDE ELEVATION (North)

PROPOSED PLANS



PROPOSED GROUND FLOOR PLAN - A



PROPOSED FIRST FLOOR PLAN - A

SCALE = 1: 100

J.HADFIELD.
ENGINEERING,SURVEYING.

Springs House, Chipping, Lancashire. PR3 2GQ.
Tel 07740 929096.

Clients Details,
Mr & Mrs. P. PROCTER

Project Details,
**EXISTING & PROPOSED PLANS & ELEVATIONS
REAR HOUSE EXTNSION**

Project Address,
**63 LITTLEMOOR
CLITHEROE
LANCASHIRE BB7 1HG**

Project Number, 451/201	Date, NOV/18	Scale, 1:100	By, JH
-----------------------------------	------------------------	------------------------	------------------

DO NOT SCALE THIS DRAWING. CHECK ALL DIMENSIONS ON SITE

THIS DRAWING IS PROTECTED BY COPYRIGHT. IT MAY NOT BE REPRODUCED OR USED FROM OR BY ANY OTHER
FOR ANY PURPOSE, WITHOUT WRITTEN PERMISSION FROM J.HADFIELD, ENGINEERING,SURVEYING.