



Barratt & David Wilson Homes North West

# Waddow View, Clitheroe

## Framework Travel Plan

January 2019



Barratt & David Wilson Homes North West

# Waddow View, Clitheroe

## Framework Travel Plan

**OFFICE ADDRESS:**

Jactin House  
24 Hood Street  
Manchester  
M4 6WX

**PROJECT NO:**

J324133

**DATE:**

January 2019

REPORT NO.	PREPARED:	DATE ISSUE:	STATUS:	CHECKED:	AUTHORISED:
2	LCW	24/01/2019	Final	MA	ME

**CHANGE LOG.**

VERSION NO.	DATE:	CHECKED BY:	REASON FOR CHANGE:
Version 1	22/01/2019	ME	Draft version for client review
Version 2	24/01/2019	ME	Final version for submission

# CONTENTS

1	INTRODUCTION	1
1.2	Overview of the Travel Planning Process	1
1.3	Report Structure	2
2	EXISTING SITE CONDITIONS	3
2.1	Site Location	3
2.2	Local Highway Network	3
2.3	Public Rights of Way	4
2.4	Air Quality	4
2.5	Modal Split	4
3	RESIDENTIAL DEVELOPMENT DETAILS	6
3.1	Development Quantum	6
4	SUSTAINABLE ACCESSIBILITY	7
4.1	Pedestrian Accessibility	7
4.2	Cycling	8
4.3	Public Transport	9
5	OBJECTIVES, TARGETS AND INDICATORS	12
5.1	Objectives	12
5.2	Targets	12
5.3	Indicators	12
6	TRAVEL PLAN COORDINATOR	13
6.1	Travel Plan Coordinator (TPC)	13
7	MEASURES AND PROMOTION STRATEGY	14
7.1	Introduction	14
7.2	Travel Survey	14
7.3	Resident's Travel Information Pack	14
7.4	Encouraging Walking	14
7.5	Encouraging Cycling	14
7.6	Promoting Public Transport	15
7.7	Promoting Car Sharing and Car Hire	15
7.8	Car Alternatives	16
7.9	Personal Travel Consultation	16

© Copyright mode transport planning. All rights reserved

This report has been prepared for the exclusive use of the commissioning party and unless otherwise agreed in writing with mode transport planning, no other party may copy, reproduce, distribute, make use of, or rely on the contents of the report. No liability is accepted by mode transport planning for any use of this report, other than for the purposes for which it was originally prepared and provided.

Opinions and information provided in this report are on the basis of mode transport planning using due skill, care and diligence in the preparation of the same and no explicit warranty is provided as to their accuracy. It should be noted and is expressly stated that no independent verification of any of the documents or information supplied to mode transport planning has been made.

8	TARGETS MONITORING AND REVIEW	17
8.1	Introduction	17
8.2	Travel Plan Targets	17
8.3	Monitoring	18
8.4	TP Review	19
APPENDICES		
APPENDIX A	– BUS TIMETABLES	
APPENDIX B	– EXAMPLE TRAVEL SURVEY QUESTIONNAIRE	
APPENDIX C	– EXAMPLE RESIDENT’S TRAVEL INFORMATION PACK	

# 1 Introduction

1.1.1 Mode Transport Planning ('Mode') has been appointed by Barratt & David Wilson Homes North West (the 'Client') to provide travel planning advice for their Waddow View residential scheme on Waddington Road in Clitheroe, Lancashire.

1.1.2 An outline planning application was approved for the wider site for the erection of 208 residential dwellings following outline approval no. **3/2014/0597**. The application approval includes the following condition (no. 31) which relates to the provision of a Travel Plan:

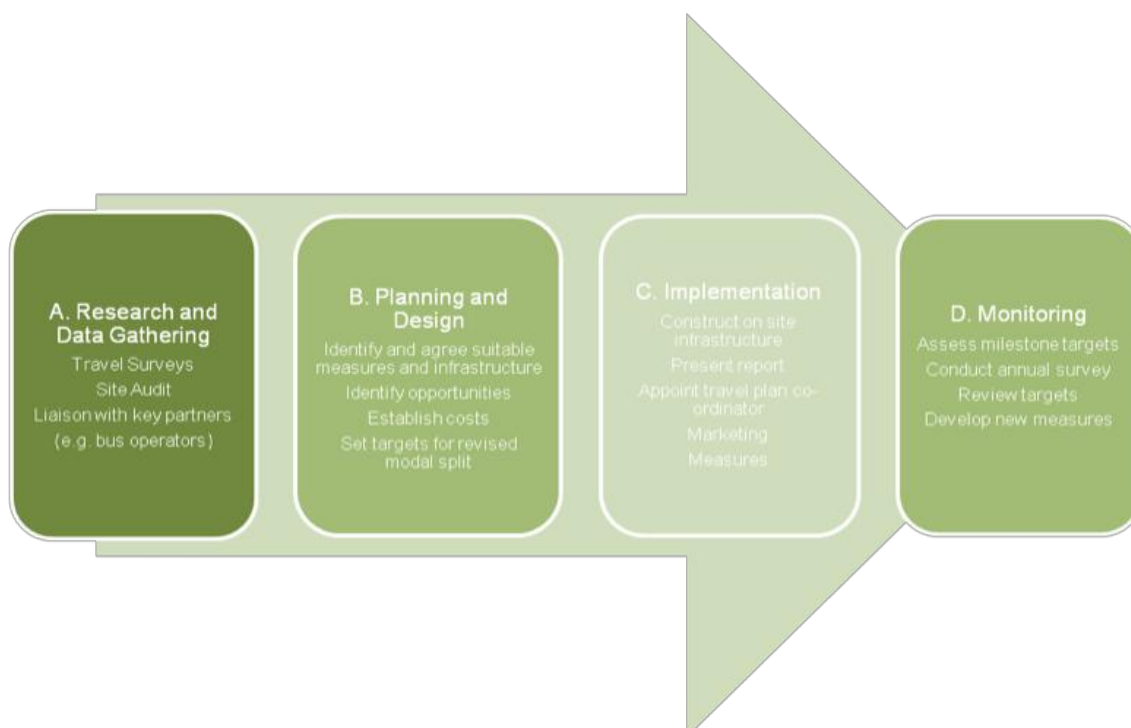
*'Prior to the commencement of development, a Framework Travel Plan for the whole development shall be submitted to and approved in writing by the Local Planning Authority. Thereafter, prior to the commencement of development of any phase or portion of development, a separate Travel Plan (or updated information for the Framework Travel Plan) for each phase shall also be submitted to and approved in writing by the Planning Authority. The Travel Plan shall be implemented, audited and updated within the timescale set out in the approved plan.'*

## 1.2 Overview of the Travel Planning Process

1.2.1 A Travel Plan (TP) provides a strategy for managing travel demand and involves a dynamic process of implementation, monitoring and review to ensure that it is sustainable over the long-term. The underlying aim of any TP is to minimise the number of single occupancy private car trips generated by a development, by encouraging a shift to more sustainable modes of transport, as a result mitigating the impact of travel.

1.2.2 A successful TP needs to follow a four-stage process as shown in [Figure 1.1](#).

Figure 1.1: Travel Plan Process



1.2.3 This TP forms the starting point in the TP process by providing the following:

- Details of the provision for cyclists, pedestrians, and public transport users;
- An example toolkit of sustainable travel measures;
- Potential milestone targets that could be developed for on-going implementation; and
- A Strategy for ongoing monitoring and review would be developed and this would include the appointment of a designated Travel Plan Co-ordinator (TPC) who would take on specific responsibility for progressing and reviewing the uptake of measures.

1.2.4 The key objectives of the TP will be taken forward by a TPC who will seek to:

- Reduce the need to travel by car to and from the site;
- Promote the health and cost benefits of cycling, walking and using public transport;
- Promote the cost benefits of car sharing;
- Provide clear information to residents on sustainable modes of travel to and from the site; and
- Provide information to residents on the alternative sustainable modes of travel.

## 1.3 Report Structure

1.3.1 The remainder of this TP is set out as follows:

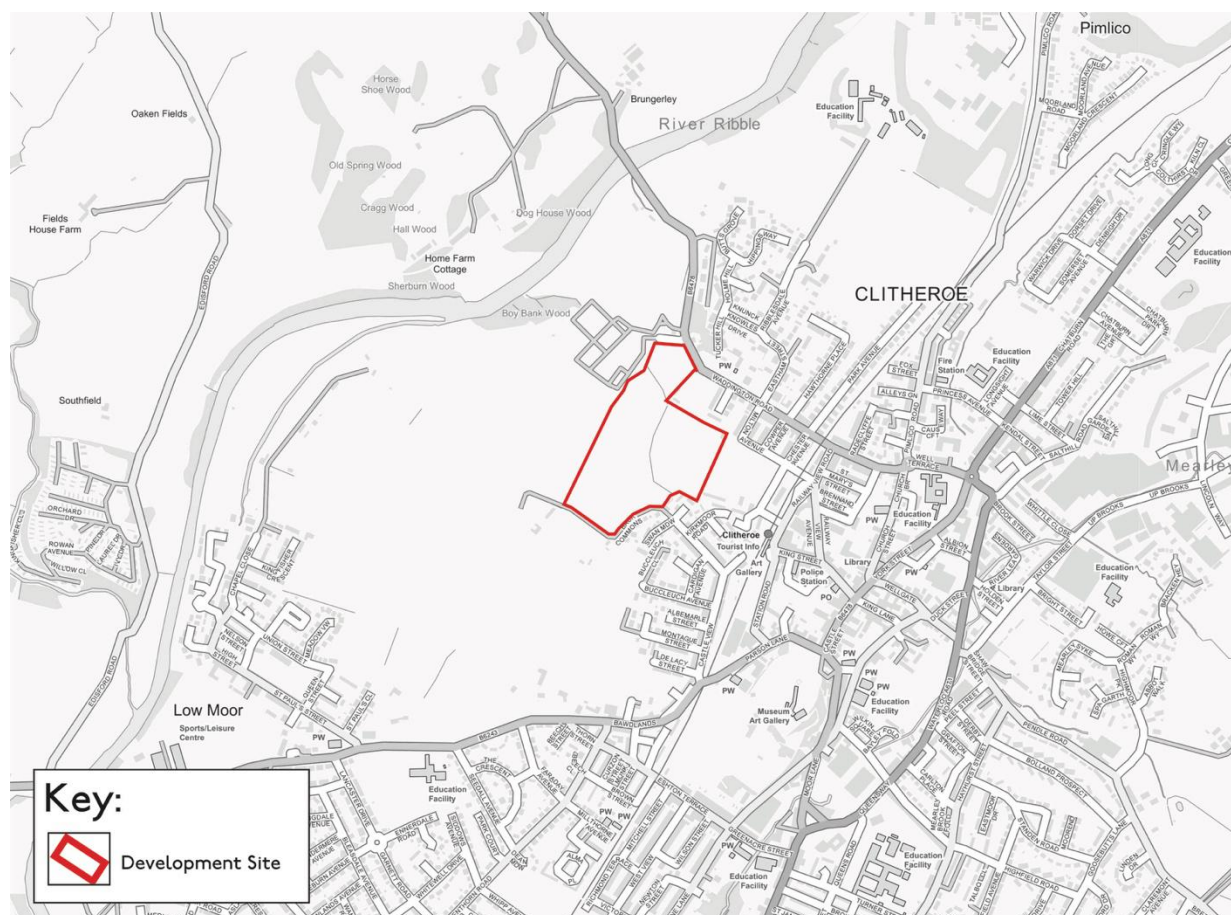
- [Section 2](#) presents the existing site conditions;
- [Section 3](#) describes the sustainable accessibility of the site;
- [Section 4](#) sets out the objectives, targets and indicators;
- [Section 5](#) identifies the Travel Plan Co-ordinator;
- [Section 6](#) considers the measures and promotion of the Travel Plan; and
- [Section 7](#) identifies TP targets and the process for monitoring and reviewing the TP.

## 2 Existing Site Conditions

### 2.1 Site Location

- 2.1.1 The site is located to the north-west of Clitheroe Town Centre and to the south of Waddington Road. The site currently comprises vacant land which is bound to the south and east by existing residential areas. [Figure 2.1](#) pinpoints the site location in the local area.

**Figure 2.1: Site Location Plan**



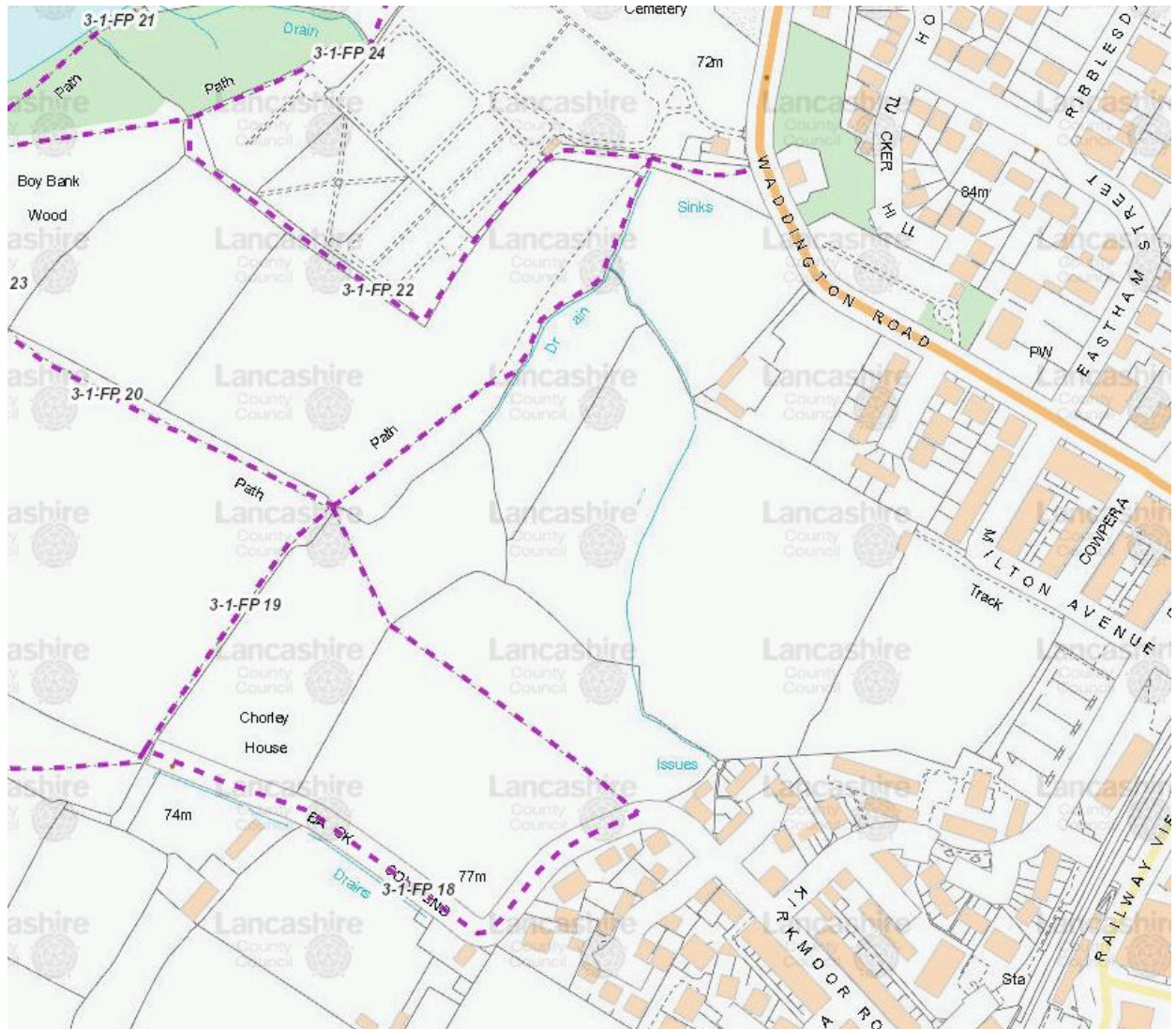
### 2.2 Local Highway Network

- 2.2.1 Waddington Road (B6478) is a two-way carriageway to the north of the site. The road is subject to a 30mph speed limit, which reduces to 20mph on the eastern boundary of the site heading towards Clitheroe Town Centre. The road is lit by a network of street lighting and has footways on both sides.
- 2.2.2 Bus stops supporting both eastbound and westbound services are located on Waddington Road, approximately 165m to the east of the eastern site boundary.
- 2.2.3 Back Commons is located to the south of the site, which connects to Kirkmoor Road. Kirkmoor Road has footways on both sides and is lit by a network of street lighting. Kirkmoor Road provides access to Clitheroe Interchange via an underpass below the railway line.

## 2.3 Public Rights of Way

2.3.1 There are Public Rights of Way (PRoW) which run along boundary and through the site, including FP22, FP19, FP19 and FP18. The existing PRoW are shown in [Figure 2.2](#).

Figure 2.2: Public Rights of Way (source: LCC online mapping)



## 2.4 Air Quality

2.4.1 The site is not located within a designated Air Quality Management Area (AQMA). The nearest AQMA is on Whalley Road in Clitheroe.

## 2.5 Modal Split

2.5.1 The current modal split for the local area has been obtained from the 2011 census data. Method of travel to work data for the 'Ribble Valley 002' MSOA, which includes areas of Clitheroe and the development site, reveals the mode of travel by residents. The modal split, based on journey to work data, is presented in [Table 2.1](#).

Table 2.1: Local Modal Split – Journey to Work

Mode	Percentage
Work mainly from home	0%
Underground, metro, light rail or tram	0%
Train	2%
Bus, minibus or coach	2%
Taxi	0%
Motorcycle, scooter or moped	1%
Driving a car or van	65%
Passenger in a car or van	4%
Bicycle	3%
On foot	23%
<b>Other</b>	<b>100%</b>

2.5.2 The modal split census data shown in Table 2.1 indicates that 69% of residents travel by car (65% drivers and 4% passengers). In terms of travel using non-car modes, a total of 31% of residents travel by sustainable modes including 2% travel by train, 2% travel by bus, 3% by bicycle and 23% on foot.

### 3 Residential Development Details

#### 3.1 Development Quantum

3.1.1 The development comprises 208 residential dwellings, including 146 private market and 62 affordable homes. The type and mix of properties are set out in Table 3.1.

Table 3.1: Type and Mix of Homes

House Type	No. of Private	No. of Affordable	Total
Apartment	0	6	6
1 Bedroom	0	7	7
2 Bedroom	0	27	27
3 Bedroom	67	22	89
4 Bedroom	79	0	79
<b>Total</b>	<b>146</b>	<b>62</b>	<b>208</b>

3.1.2 The approved development site layout is shown in Figure 3.1.

Figure 3.1: Residential Development Site Layout



# 4 Sustainable Accessibility

## 4.1 Pedestrian Accessibility

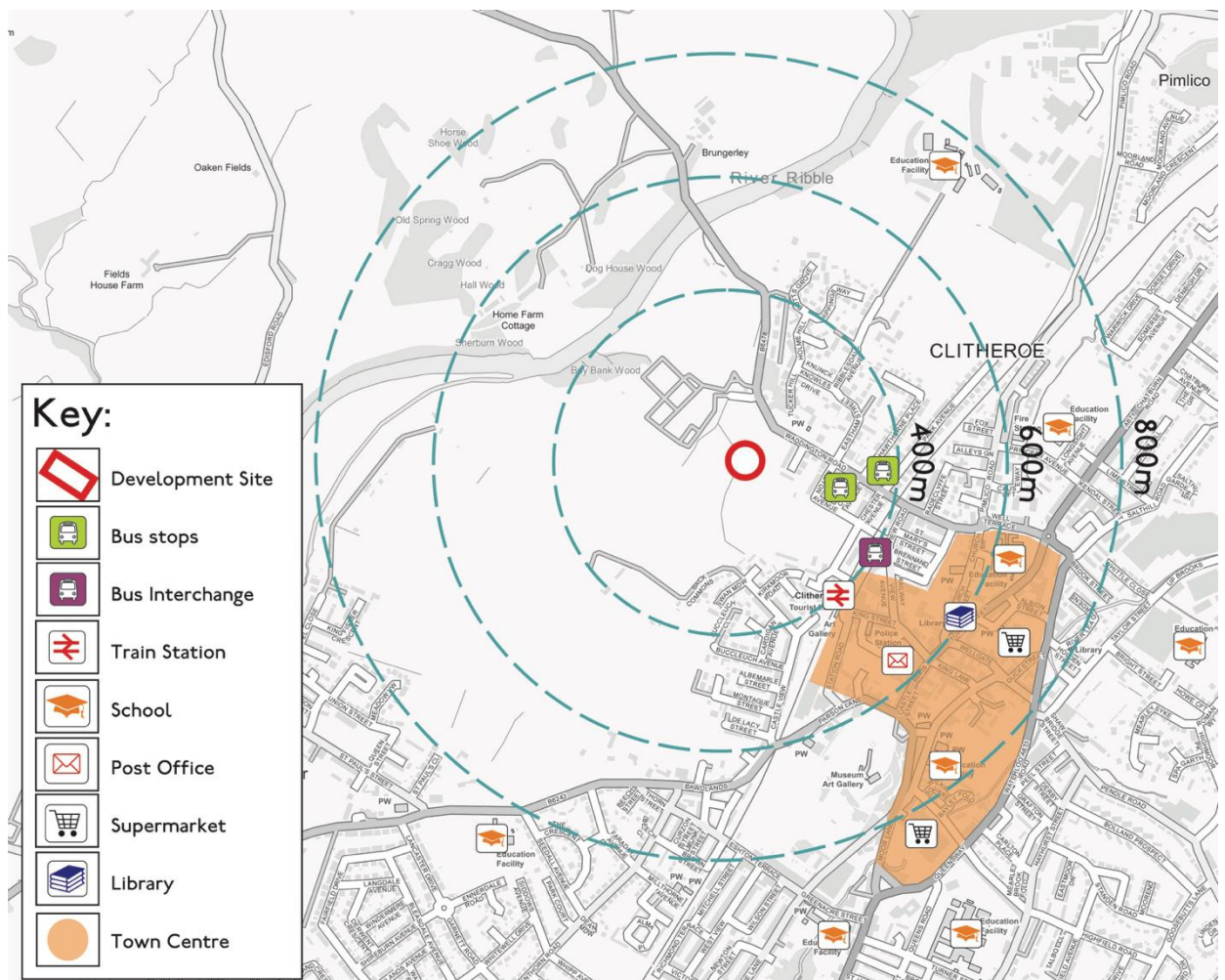
4.1.1 The 'Guidelines for Providing for Journeys on Foot' produced by the Chartered Institution of Highways and Transportation (CIHT) document describes acceptable walking distances for pedestrians without mobility impairment. **Table 4.1** sets out the CIHT guidelines on acceptable walking distances.

**Table 4.1: CIHT Guideline Acceptable Walking Distances**

Criteria	Town Centre	Commuting / Sight Seeing	Elsewhere
Desirable	200m	500m	400m
Acceptable	400m	1,000m	800m
Preferred Maximum	800m	2,000m	1,200m

4.1.2 **Figure 4.1** provides a sustainable accessibility plan showing the local amenities and transport links accessible from the development site.

**Figure 4.1: Walking Catchment Areas and Local Amenities**



4.1.3 As shown in [Figure 4.1](#), there are a range of local amenities accessible from the site by walking or cycling. [Table 4.2](#) identifies the main local amenities and their approximate distance and walk times from the centre of the site. The walking times are based on an average walking speed of 1.4 metres per second and do not allow for waiting time to cross junctions.

**Table 4.2: Local Amenities – Distance and Walk Times**

Destination	Approx. Distance (m)	Approx. Walk Time (@ 1.4 m/s)
Bus stop on Waddington Road	390m	5 minutes
Clitheroe Bus Interchange	400m	5 minutes
Clitheroe Train Station	400m	5 minutes
Post Office	610m	7 minutes
Library	660m	8 minutes
Town Centre – Shops, Restaurants and Leisure Facilities	500m	6 minutes
Tesco Superstore	800m	10 minutes
Pendle Primary School	1,000m	12 minutes
Moorland School	1,000m	12 minutes
Sainsbury Superstore	1,100m	13 minutes
Ribblesdale High School	1,200m	14 minutes
Clitheroe Edisford Primary School	1,200m	14 minutes

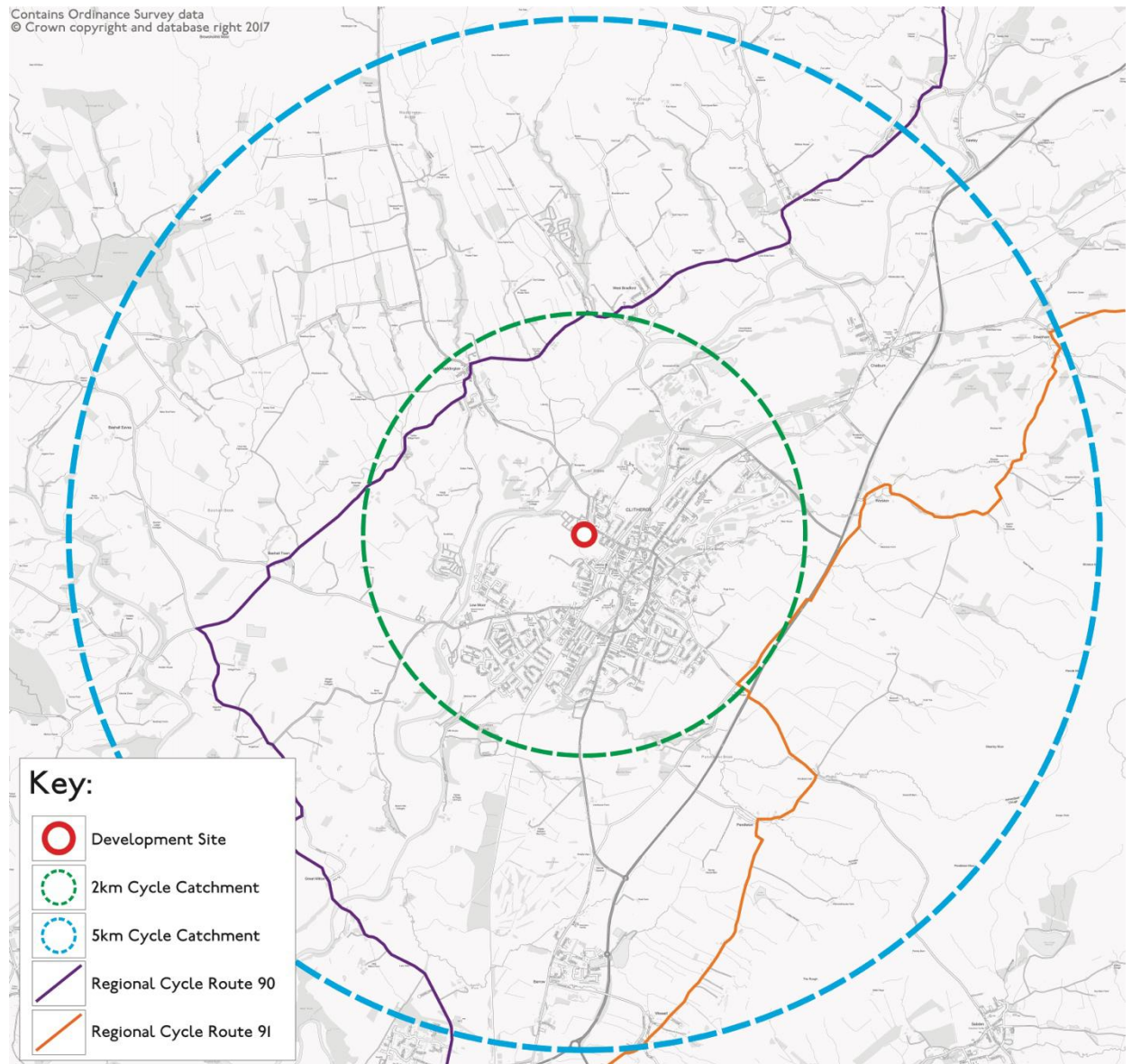
4.1.4 [Table 4.2](#) shows that a range of public transport connections are within an ‘acceptable’ walking distance of 400m from the centre of the site. The town centre including a range of amenities is located within 800m, which is within CIHT’s ‘preferred maximum’ walking distance in the ‘town centre’ criteria.

## 4.2 Cycling

4.2.1 The Department for Transport (DfT) – Local Transport Note 1/04 ‘Policy, Planning and Design for Walking and Cycling’ states that there are limits to the distances generally considered acceptable for cycling. The average length for cycling is 4km (2.4 miles), although journeys of up to three times this distance are not uncommon for regular commuters. It is widely considered that cycling has the potential to substitute for short car trips, particularly those under 5km, and form part of a longer journey by public transport. Cycling is therefore an important journey to work mode that has the potential to perform a more significant role.

4.2.2 [Figure 4.2](#) presents a 2km and 5km catchment area, and local cycle routes accessible from the site.

Figure 4.2: Cycling Catchment



4.2.3 As shown in Figure 4.2, the whole of Clitheroe is accessible within 2km of the site.

4.2.4 In terms of access to the National Cycle Network (NCN), Regional Cycle Routes 90 and 91 can be reached within 2km of the site.

## 4.3 Public Transport

### Bus Travel

4.3.1 As shown in Figure 4.1, the nearest bus stops are located on Waddington Road and Clitheroe Bus Interchanges.

4.3.2 The local bus services accessible from the site are summarised in Table 4.3.

Table 4.3: Local Bus Services

Service No.	Routes	Approximate Hourly Services		
		Mon-Fri	Sat	Sun
2	Clitheroe – Clitheroe via Low Moor	2	2	0
15	Accrington – Clitheroe via Clayton Le Moors	4 per day		0
22	Clitheroe – Shadsworth via Langho	2	2	0
66	Clitheroe – Nelson via Waddington	4 per day		-
M2		2	2	1 every 2 hours

4.3.3 The full bus timetables are attached in [Appendix A](#).

#### Rail Travel

4.3.4 Clitheroe railway station is located within 400m of the site, providing access to the regional rail network including direct routes to Rochdale, Manchester, Bolton and Blackburn, as shown in [Figure 4.3](#).

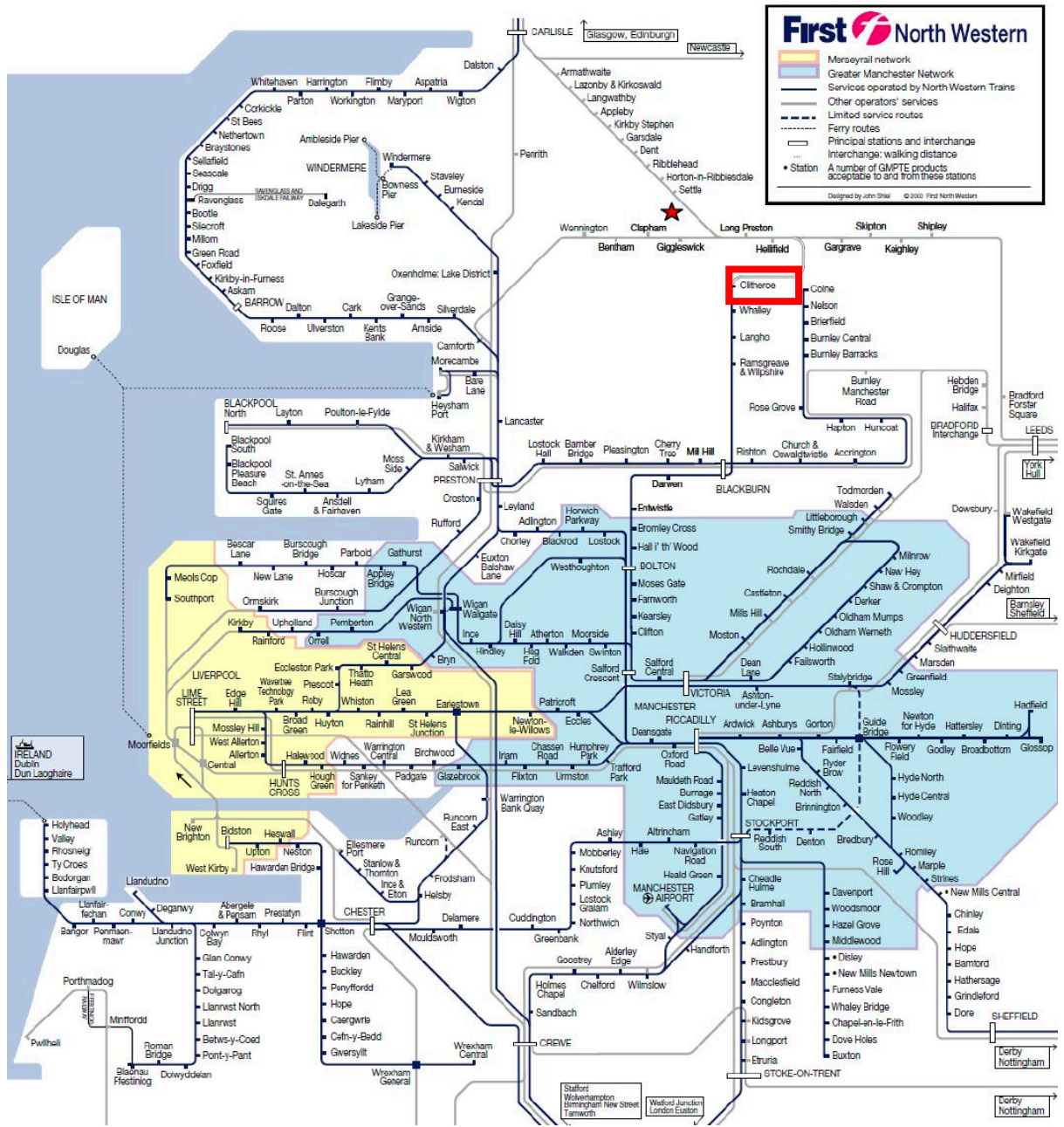
# Waddow View, Clitheroe

Framework Travel Plan



transport planning

Figure 4.3: North Western Railway Map



## 5 Objectives, Targets and Indicators

### 5.1 Objectives

5.1.1 This TP is targeted at combating over-dependency on cars by boosting and encouraging alternatives to single occupancy car use. In order to do this, the TP has the following broad objectives:

- To instil a culture of sustainable travel behaviour amongst residents of the site from first occupation;
- To deliver ease of access to key facilities by enabling walking, cycling, public transport and car sharing to employment, education, health, shopping and leisure facilities;
- To promote healthy lifestyles and raise awareness about the benefits of utilising sustainable travel opportunities; and
- To design the development using best practice urban design principles that open up the permeability of the development, encouraging walking and cycling as the first choice for local trips.

### 5.2 Targets

5.2.1 The overarching goal of the Travel Plan is to reduce single occupancy car use and, as a result, the number of car trips in and out of the site. The initial aim of the TP will be to see a reduction in single occupancy car journeys over a specified period, from first occupation. Based on the review of existing conditions and the potential to influence travel behaviour, key modal shift targets will focus on:

- Increasing levels of car sharing;
- Maximising the number of local trips made by walking and cycling;
- Promoting home working, where possible, to reduce the need to travel; and
- Promoting the use of local bus and rail services for full or part of journeys, particularly for those to and from the place of work.

5.2.2 More detailed modal shift targets will be identified following the initial travel survey of residents; to be undertaken once 50% of the residential dwellings are occupied or within 12 months of first occupation, whichever is sooner.

### 5.3 Indicators

5.3.1 The, now superseded, Good Practice Guidelines: Delivering Travel Plans through the Planning Process highlights the importance of establishing clear indicators to monitor travel behaviour at the site. This information can subsequently be used to identify where the greatest potential for mode shift may lie and to inform the implementation strategy for the TP over the coming year. A number of indicators will be measured at the proposed development. The responsibility for measuring these indicators lies with the Travel Plan Coordinator, with support from Lancashire County Council (LCC), and could include the following:

- Percentage of peak hour trips made by residents on foot;
- Percentage of peak hour trips made by residents by bicycle;
- Percentage of peak hour trips made by residents using public transport; and
- Percentage of peak hour trips made by residents' car sharing and registered with a car share database.

## 6 Travel Plan Coordinator

### 6.1 Travel Plan Coordinator (TPC)

6.1.1 The Client will appoint a TPC for the site prior to first occupation.

6.1.2 The TPC role will be fulfilled for a period to be agreed with the LPA and LCC following first occupation of the development. The TPC will act as a liaison point for any issues relating to the TP. This will include liaising with the LCC and, where required, public transport operators.

6.1.3 The anticipated roles and responsibilities of the TPC will include:

- Administer/manage the TP and provide a liaison in implementing the plan with LCC;
- Ensure travel awareness amongst occupants;
- Provide a point of contact to discuss travel information and options;
- Promote and encourage the use of travel modes other than the car and car-sharing, where appropriate; and
- Ensure the availability of the most up to date travel information.

6.1.4 The TPC will be responsible for conducting a travel survey once 50% of the units are occupied or within 12 months of first occupation, whichever is sooner. The TPC will submit these results to the LPA and LCC, as the Local Highway Authority, and together they will form more specific measures for the TP document.

## 7 Measures and Promotion Strategy

### 7.1 Introduction

7.1.1 There will be a sustained and long-term commitment to encourage sustainable travel and implementing a range of promotional measures to deliver tangible modal shift amongst the residents of the Waddow View development. The main responsibility for promoting measures will lie with the TPC, who will seek to implement travel plan measures and promotional strategy as set out below.

### 7.2 Travel Survey

7.2.1 An initial Travel Survey will be undertaken once 50% of the units are occupied or within 12 months of first occupation, whichever is sooner. The Travel Survey results will provide a valuable 'baseline' against which the success of the TP, in reducing car journey and increasing journey by walking, cycling and public transport, will be measured.

7.2.2 An example of the Travel Survey Questionnaire is attached in [Appendix B](#).

### 7.3 Resident's Travel Information Pack

7.3.1 All site occupants should be made aware of the existence of the TP and its aims through a Resident's Travel Information Pack.

7.3.2 A Resident's Travel Information Pack should include information:

- The role and contact details for the TPC;
- Walking and cycling routes;
- Identification of local amenities and facilities; and
- Information on bus and rail services including where to obtain timetables and route plans.

7.3.3 Resident's Travel Information Packs should be provided to new residents within the welcome packs on first occupation.

7.3.4 An example of a Resident's Travel Information Pack is attached in [Appendix C](#).

### 7.4 Encouraging Walking

7.4.1 In order to encourage walking at the site, the TPC will ensure that residents have received information and advice concerning safe pedestrian routes to and from the site. Residents will also be encouraged to walk by promoting the benefits which include health, reduction in stress, cost and environmental friendliness.

### 7.5 Encouraging Cycling

7.5.1 In terms of proposed operational measures, the TPC's role will include the promotion of cycling to residents. This may be through the provision of details on local cycle routes/ facilities accessible from the development and other relevant information such as bicycle purchase/repair.

7.5.2 Further information regarding the benefits of regular exercise, cycling events within the local area and cycle club will also be promoted through similar measures.



7.5.3 Other national campaigns can be promoted by the TPC including 'The Bike Week' where residents can register (<http://bikeweek.org>) to take part in The Bike Week Challenge.

7.5.4 The TPC could also encourage residents to join events run by British Cycling at [www.letsride.co.uk](http://www.letsride.co.uk)

## 7.6 Promoting Public Transport

7.6.1 The promotion of walking and cycling will encourage many residents to adopt these modes, but for those travelling further from the proposed development site, public transport provides a more suitable alternative to the private car. A lack of awareness of the facilities available is often cited as a reason for not using public transport facilities.



7.6.2 The TPC will therefore also ensure that up-to-date public transport frequency information is available to residents at the development to maximise the potential use of this mode.

7.6.3 The latest public transport information and links to public transport websites will be provided in the Resident's Travel Information Pack, such as Travel Line ([www.traveline.info](http://www.traveline.info)) and LCC's website.

## 7.7 Promoting Car Sharing and Car Hire

7.7.1 Car sharing represents a convenient and alternative form of travel with significant potential to reduce the total private mileage and car parking demand.

7.7.2 The principal benefits associated with the introduction of a car sharing scheme are considerable and include:

- Reduced travel costs – drivers and passengers can split the costs of travel;
- Improved access – to areas which aren't accessible through public transport;
- Meet new people – sharing a car is a great way to meet colleagues, friends and neighbours;
- Reduced congestion – by sharing cars you can do your bit to help reduce congestion in the area;
- Reduced pollution – cutting congestion will also help to reduce pollution; and
- Reduced Carbon Dioxide emissions – which in turn will help to reduce the development of global warming.

7.7.3 Residents will be provided with details of publicly-accessible databases and websites that provide the opportunity for people to car share in the wider area. These may include:



- [www.shareacar.com](http://www.shareacar.com)
- <https://liftshare.com>

7.7.4 There are no car clubs in the area, however, there is a service that allows people to provide their vehicles for hire (<https://turo.com>). This allows owners to earn money by hiring out their vehicles and allows renters to benefit from the use of a vehicle without car ownership. Those hiring vehicles will also need to think about when they will need the vehicle rather than use a car to make ad hoc trips. The TPC will promote this service.



## 7.8 Car Alternatives

7.8.1 It is understood that sometimes access by car is necessary. Residents will also be provided the details of local minicab/ taxi firms and popular services that deliver to homes (e.g. food supermarkets) so that people can have access to the services and facilities they require as necessary.



## 7.9 Personal Travel Consultation

7.9.1 The TPC may offer new residents a Personal Travel Consultation to provide targeted information and support, relevant to the households and the journeys they regularly make.

## 8 Targets Monitoring and Review

### 8.1 Introduction

- 8.1.1 The monitoring and review programme to be undertaken by the TPC will be designed to generate information by which the TP can be evaluated, revised, developed and improved.
- 8.1.2 The principal objective of the plan is to affect a reduction in the use of private cars. In the first instance, a suitable indicator of the success of the plan will be a review of residents and their travel movements.
- 8.1.3 Upon completion of the first travel questionnaire, it will be appropriate to set targets which seek to achieve an increased proportion of residents travelling by more sustainable forms of transport. Notwithstanding this, a number of preliminary action targets are set out below.

### 8.2 Travel Plan Targets

- 8.2.1 Targets are measurable goals against which progress of the TP in achieving its objectives can be assessed.
- 8.2.2 It will not be possible to set final targets for modal shift until after the site has been occupied and an initial Travel Survey has been undertaken.
- 8.2.3 Notwithstanding the above, it is possible at this stage to set framework goals for achieving the implementation of the full TP using SMART targets – Specific, Measurable, Achievable, Realistic and Time-related.
- 8.2.4 **Table 8.1** sets out an Action Plan for how the TP will implement the various actions that would be required in order to establish and maintain the TP. These provide a context and a framework for the targets and measures that will be developed as part of the TP, which will include more accurate targets for achieving modal shift following the initial travel survey.

Table 8.1: Travel Plan Action Plan

Activity	Description	Frequency for Review	Deadline for Completion After Occupation	Lead
Appoint Travel Plan Co-ordinator	Lead person identified to co-ordinate the development and implementation of the Travel Plan	Annual	At least 1 month prior to first occupation	Developer
Baseline assessment of modes of travel and preferences and questionnaires	Engagement with residents through questionnaires in order to provide a baseline assessment.	Annual	Within 12months of first occupation or 50% occupation of development (whichever is sooner)	TPC
Analysis of Baseline Information	Analysis of survey information in order to identify trends, make recommendations and develop action plan.	Annual	Within 12 Months	TPC
Develop Action Plan	Information used to identify initiatives which are set out in a detailed action plan	Annual	Within 12 Months	TPC
Sign Off Plan	Formal approval of Travel Plan and its activities by <b>LPA and LCC</b>	One-off sign off	Within 12 Months	TPC
Review, Update and Report	Review travel plan, including results of surveys and questionnaires. Update action plan as required and submit progress report to <b>LPA and LCC</b>	Annual	Period to be agreed	TPC

## 8.3 Monitoring

8.3.1 TPs are dynamic documents that require monitoring and review to ensure that they remain relevant and continue to be implemented, this process is outlined below.

8.3.2 To enable the success of the TP to be established, the TPC is responsible for ongoing monitoring which will be undertaken at regular intervals.

8.3.3 To aid this, a programme of regular monitoring of travel patterns has been established to measure changes against the baseline travel survey.

8.3.4 The monitoring will consist of such items as;

- Travel Questionnaire;
- General feedback from residents.

8.3.5 Information gathered as part of the continuous monitoring process would be made available to LCC. Through this medium, future strategies for further TP objective development can be considered in partnership between residents, LCC and local transport providers.

## 8.4 TP Review

8.4.1 The TPC will arrange for an annual review of the TP to assess the success of the plan to date. The TPC will then prepare a monitoring report which will summarise the results of the annual travel surveys, assess the results against the TP targets to provide an indication of the success of the TP, and identify measures which could potentially be included in the future.

8.4.2 The re-issue of the travel questionnaire will provide the opportunity for residents to gather new information regarding attitudes to travel and on the modal split in comparison to the previous years.

# APPENDICES

# APPENDIX A – Bus Timetables

## 280 PRESTON - SKIPTON via Mellor, Langho, Chatburn, Gisburn (outbound)

### Monday to Friday

<i>Operator</i>	<i>PBT</i>	<i>PBT</i>	<i>PBT</i>	<i>PBT</i>	<i>PBT</i>	<i>PBT</i>	<i>PBT</i>	<i>PBT</i>	<i>PBT</i>	<i>PBT</i>	<i>PBT</i>	<i>PBT</i>
<i>Notes</i>												
<b>PRESTON CITY CENTRE, Bus Station (Stand 38)</b>	06:50	07:35	09:15	10:15	11:15	12:15	13:15	14:15	15:15	16:15	17:15	18:15
FARRINGDON PARK, Hesketh Arms (o/s)	07:00	07:45	09:25	10:25	11:25	12:25	13:25	14:25	15:25	16:27	17:27	18:24
MELLOR BROOK, Feilden Arms (o/s)	07:11	07:57	09:35	10:35	11:35	12:35	13:35	14:35	15:35	16:39	17:39	18:34
LANGHO, Petre Arms (o/s)	07:22	08:09	09:45	10:45	11:45	12:45	13:45	14:45	15:45	16:50	17:50	18:44
WHALLEY, Post Office (o/s)	07:28	08:15	09:52	10:52	11:52	12:52	13:52	14:52	15:52	16:57	17:57	18:50
CLITHEROE TOWN CENTRE, Interchange (Stand 5)	07:40	08:28	10:04	11:04	12:04	13:04	14:04	15:04	16:04	17:09	18:09	19:00
CLITHEROE TOWN CENTRE, Interchange (Stand 5)	07:43	----	10:09	----	12:09	----	14:09	----	16:09	----	18:14	----
CHATBURN ROAD, Grammar School (o/s)	----	08:32	----	----	----	----	----	----	----	----	----	----
CHATBURN, Post Office (by)	07:50	----	10:16	----	12:16	----	14:16	----	16:16	----	18:21	----
GISBURN, Travellers Court (opp)	07:58	----	10:24	----	12:24	----	14:24	----	16:24	----	18:28	----
BARNOLDSWICK, Fernlea Avenue (by)	08:09	----	10:35	----	12:35	----	14:35	----	16:35	----	18:39	----
THORNTON IN CRAVEN, Thornton Post Office (NE-bound)	08:14	----	10:40	----	12:40	----	14:40	----	16:40	----	----	----
SKIPTON, Craven College (opp)	08:25	----	----	----	----	----	----	----	----	----	----	----
SKIPTON, Fire Station (E-bound)	----	----	10:52	----	12:52	----	14:52	----	16:52	----	----	----
<b>SKIPTON, Bus Station Stand 4 (4)</b>	08:33	----	10:55	----	12:55	----	14:55	----	16:55	----	----	----

### Saturday

<i>Operator</i>	<i>PBT</i>	<i>PBT</i>	<i>PBT</i>	<i>PBT</i>	<i>PBT</i>	<i>PBT</i>	<i>PBT</i>	<i>PBT</i>	<i>PBT</i>	<i>PBT</i>	<i>PBT</i>	
<i>Notes</i>												
<b>PRESTON CITY CENTRE, Bus Station (Stand 38)</b>	08:15	09:15	10:15	11:15	12:15	13:15	14:15	15:15	16:15	17:15		
FARRINGDON PARK, Hesketh Arms (o/s)	08:25	09:25	10:25	11:25	12:25	13:25	14:25	15:25	16:25	17:25		
MELLOR BROOK, Feilden Arms (o/s)	08:35	09:35	10:35	11:35	12:35	13:35	14:35	15:35	16:35	17:35		
LANGHO, Petre Arms (o/s)	08:45	09:45	10:45	11:45	12:45	13:45	14:45	15:45	16:45	17:45		
WHALLEY, Post Office (o/s)	08:52	09:52	10:52	11:52	12:52	13:52	14:52	15:52	16:52	17:52		
CLITHEROE TOWN CENTRE, Interchange (Stand 5)	09:04	10:04	11:04	12:04	13:04	14:04	15:04	16:04	17:04	18:04		
CLITHEROE TOWN CENTRE, Interchange (Stand 5)	09:09	----	11:09	----	13:09	----	15:09	----	17:09	----		
CHATBURN, Post Office (by)	09:16	----	11:16	----	13:16	----	15:16	----	17:16	----		
GISBURN, Travellers Court (opp)	09:24	----	11:24	----	13:24	----	15:24	----	17:24	----		
BARNOLDSWICK, Fernlea Avenue (by)	09:35	----	11:35	----	13:35	----	15:35	----	17:35	----		
THORNTON IN CRAVEN, Thornton Post Office (NE-bound)	09:40	----	11:40	----	13:40	----	15:40	----	17:40	----		
SKIPTON, Fire Station (E-bound)	09:52	----	11:52	----	13:52	----	15:52	----	17:52	----		
<b>SKIPTON, Bus Station Stand 4 (4)</b>	09:55	----	11:55	----	13:55	----	15:55	----	17:55	----		

## 280 PRESTON - SKIPTON via Mellor, Langho, Chatburn, Gisburn (inbound)

### Monday to Friday

<i>Operator</i>	<i>PBT</i>	<i>PBT</i>	<i>PBT</i>	<i>PBT</i>	<i>PBT</i>	<i>PBT</i>	<i>PBT</i>	<i>PBT</i>	<i>PBT</i>	<i>PBT</i>	<i>PBT</i>	<i>PBT</i>
<i>Notes</i>												
<b>SKIPTON, Bus Station Stand 4 (4)</b>	----	----	----	09:20	----	11:20	----	13:20	----	15:20	----	17:20
SKIPTON, Outside Rail Station (W-bound)	----	----	----	09:22	----	11:22	----	13:22	----	15:22	----	17:22
THORNTON IN CRAVEN, Thornton Post Office (SW-bound)	----	----	----	09:32	----	11:32	----	13:32	----	15:32	----	17:32
BARNOLDSWICK, Fernlea Avenue (by)	06:15	07:05	----	09:38	----	11:38	----	13:38	----	15:38	----	17:38

GISBURN,Post Office (by)	06:24	07:14	----	09:48	----	11:48	----	13:48	----	15:48	----	17:48
CHATBURN,Post Office (opp)	06:32	07:22	----	09:56	----	11:56	----	13:56	----	15:56	----	17:56
CLITHEROE TOWN CENTRE,Interchange (Stand 4)	06:39	07:29	08:40	10:05	11:10	12:05	13:10	14:05	15:10	16:05	17:15	18:05
CLITHEROE TOWN CENTRE,Interchange (Stand 4)	06:42	07:34	----	10:10	----	12:10	----	14:10	----	16:10	----	18:10
WHALLEY,Bus Station (Stand A)	06:54	07:47	08:55	10:25	11:25	12:25	13:25	14:25	15:25	16:25	17:27	18:22
LANGHO,Petre Arms (opp)	07:00	07:53	09:01	10:31	11:31	12:31	13:31	14:31	15:31	16:31	17:33	18:28
MELLOR BROOK,Feilden Arms (o/s)	07:10	08:03	09:12	10:42	11:42	12:42	13:42	14:42	15:42	16:42	17:43	18:38
FARRINGDON PARK,Hesketh Arms (opp)	07:20	08:17	09:24	10:54	11:54	12:54	13:54	14:54	15:54	16:54	17:53	18:48
<b>PRESTON CITY CENTRE,Arrival Stand (Stand 0)</b>	07:30	08:30	09:36	11:06	12:06	13:06	14:06	15:06	16:06	17:06	18:05	18:58

*Operator* PBT

*Notes*

<b>SKIPTON,Bus Station Stand 4 (4)</b>	----
SKIPTON,Outside Rail Station (W-bound)	----
THORNTON IN CRAVEN,Thornton Post Office (SW-bound)	----
BARNOLDSWICK,Fernlea Avenue (by)	18:39
GISBURN,Post Office (by)	18:49
CHATBURN,Post Office (opp)	18:57
CLITHEROE TOWN CENTRE,Interchange (Stand 4)	19:06
CLITHEROE TOWN CENTRE,Interchange (Stand 4)	19:10
WHALLEY,Bus Station (Stand A)	19:20
LANGHO,Petre Arms (opp)	19:25
MELLOR BROOK,Feilden Arms (o/s)	19:35
FARRINGDON PARK,Hesketh Arms (opp)	19:45
<b>PRESTON CITY CENTRE,Arrival Stand (Stand 0)</b>	19:55

## Saturday

<i>Operator</i>	<u>PBT</u>	<u>PBT</u>	<u>PBT</u>	<u>PBT</u>	<u>PBT</u>	<u>PBT</u>	<u>PBT</u>	<u>PBT</u>	<u>PBT</u>	<u>PBT</u>	<u>PBT</u>
<i>Notes</i>											
<b>SKIPTON,Bus Station Stand 4 (4)</b>	----	----	10:20	----	12:20	----	14:20	----	16:20	----	18:20
SKIPTON,Outside Rail Station (W-bound)	----	----	10:22	----	12:22	----	14:22	----	16:22	----	18:22
THORNTON IN CRAVEN,Thornton Post Office (SW-bound)	----	----	10:32	----	12:32	----	14:32	----	16:32	----	18:32
BARNOLDSWICK,Fernlea Avenue (by)	08:38	----	10:38	----	12:38	----	14:38	----	16:38	----	18:38
GISBURN,Post Office (by)	08:48	----	10:48	----	12:48	----	14:48	----	16:48	----	18:48
CHATBURN,Post Office (opp)	08:56	----	10:56	----	12:56	----	14:56	----	16:56	----	18:56
CLITHEROE TOWN CENTRE,Interchange (Stand 4)	09:05	10:10	11:05	12:10	13:05	14:10	15:05	16:10	17:05	18:10	19:05
CLITHEROE TOWN CENTRE,Interchange (Stand 4)	09:10	----	11:10	----	13:10	----	15:10	----	17:10	----	19:10
WHALLEY,Bus Station (Stand A)	09:25	10:25	11:25	12:25	13:25	14:25	15:25	16:25	17:25	18:25	19:20
LANGHO,Petre Arms (opp)	09:31	10:31	11:31	12:31	13:31	14:31	15:31	16:31	17:31	18:31	19:25
MELLOR BROOK,Feilden Arms (o/s)	09:42	10:42	11:42	12:42	13:42	14:42	15:42	16:42	17:42	18:41	19:35
FARRINGDON PARK,Hesketh Arms (opp)	09:54	10:54	11:54	12:54	13:54	14:54	15:54	16:54	17:54	18:51	19:45
<b>PRESTON CITY CENTRE,Arrival Stand (Stand 0)</b>	10:06	11:06	12:06	13:06	14:06	15:06	16:06	17:06	18:06	19:01	19:55

## Key

- PBT - Preston Bus Ltd

## 2 CLITHEROE - CLITHEROE via Low Moor (outbound)

### Monday to Saturday

<i>Operator</i>	<u>PBT</u>	<u>PBT</u>	<u>PBT</u>	<u>PBT</u>	<u>PBT</u>	<u>PBT</u>	<u>PBT</u>	<u>PBT</u>	<u>PBT</u>	<u>PBT</u>	<u>PBT</u>	<u>PBT</u>
<i>Notes</i>	\$	\$	\$	\$	\$	\$	\$	\$	\$	\$	\$	\$
<i>Variations</i>	<u>NS</u>											
<b>CLITHEROE TOWN CENTRE,Interchange (Stand 6)</b>	07:15	07:45	08:20	08:55	09:25	10:00	10:30	11:00	11:30	12:00	12:30	13:00
CLITHEROE TOWN CENTRE,Market Place (Stand A)	07:16	07:46	08:21	08:56	09:26	10:01	10:31	11:01	11:31	12:01	12:31	13:01
HENTHORN PARK,Kenilworth Drive (by)	07:25	07:55	08:30	09:05	09:35	10:10	10:40	11:10	11:40	12:10	12:40	13:10
HENTHORN PARK,Lune Road (opp)	07:27	07:57	08:32	09:07	09:37	10:12	10:42	11:12	11:42	12:12	12:42	13:12
LOW MOOR,St Anns Court (by)	07:33	08:03	08:38	09:13	09:43	10:18	10:48	11:18	11:48	12:18	12:48	13:18
<b>CLITHEROE TOWN CENTRE,Interchange (Stand 6)</b>	07:39	08:09	08:44	09:19	09:49	10:24	10:54	11:24	11:54	12:24	12:54	13:24

<i>Operator</i>	<u>PBT</u>	<u>PBT</u>	<u>PBT</u>	<u>PBT</u>	<u>PBT</u>	<u>PBT</u>	<u>PBT</u>	<u>PBT</u>	<u>PBT</u>	<u>PBT</u>
<i>Notes</i>	\$	\$	\$	\$	\$	\$	\$	\$	\$	\$
<i>Variations</i>										
<b>CLITHEROE TOWN CENTRE,Interchange (Stand 6)</b>	13:30	14:00	14:30	15:00	15:30	16:00	16:37	17:10	17:42	18:15
CLITHEROE TOWN CENTRE,Market Place (Stand A)	13:31	14:01	14:31	15:01	15:31	16:01	16:38	17:11	17:43	18:16
HENTHORN PARK,Kenilworth Drive (by)	13:40	14:10	14:40	15:10	15:40	16:10	16:47	17:20	17:52	18:25
HENTHORN PARK,Lune Road (opp)	13:42	14:12	14:42	15:12	15:42	16:12	16:49	17:22	17:54	18:27
LOW MOOR,St Anns Court (by)	13:48	14:18	14:48	15:18	15:48	16:18	16:55	17:28	18:00	18:33
<b>CLITHEROE TOWN CENTRE,Interchange (Stand 6)</b>	13:54	14:24	14:54	15:24	15:54	16:24	17:01	17:34	18:06	18:39

### Key

- \$ - Operated on behalf of Lancashire County Council
- PBT - Preston Bus Ltd

## 15 ACCRINGTON - CLITHEROE via Clayton Le Moors (outbound)

### Monday to Friday

<i>Operator</i>	<u><i>BTL</i></u>	<u><i>BTL</i></u>	<u><i>BTL</i></u>	<u><i>BTL</i></u>
<i>Notes</i>				
<i>Variations</i>			<u><i>F</i></u>	<u><i>NF</i></u>
<b>ACCRINGTON, Bus Station (Stand 11)</b>	06:05	07:30	13:33	14:15
CLAYTON-LE-MOORS, Sydney Street (by)	06:08	07:35	13:38	14:20
CLAYTON-LE-MOORS, Sparth Road (by)	06:11	07:38	13:41	14:23
GREAT HARWOOD, Blackburn Road (by)	06:14	07:47	13:50	14:32
WHALLEY, Post Office (o/s)	06:21	07:57	14:00	14:42
CLITHEROE TOWN CENTRE, Sainsburys (opp)	06:27	08:07	14:10	14:52
CLITHEROE TOWN CENTRE, Interchange (Stand 5)	06:29	08:09	14:12	14:54
<b>CHATBURN ROAD, Grammar School (o/s)</b>	----	08:12	----	----

---

## 15 ACCRINGTON - CLITHEROE via Clayton Le Moors (inbound)

### Monday to Friday

<i>Operator</i>	<u><i>BTL</i></u>	<u><i>BTL</i></u>	<u><i>BTL</i></u>
<i>Notes</i>			
<b>CLITHEROE TOWN CENTRE, Interchange (Stand 4)</b>	08:17	09:00	19:15
CLITHEROE TOWN CENTRE, Lowergate (Stand H)	08:19	09:02	19:17
CLITHEROE TOWN CENTRE, Greenacre Street (by)	08:20	09:04	19:19
WHALLEY, Bus Station (Stand B)	08:27	09:12	19:25
GREAT HARWOOD, Harwood Bar (opp)	08:35	09:20	19:31
GREAT HARWOOD, Towngate (Stop 2)	08:37	09:22	19:33
CLAYTON-LE-MOORS, Sparth Road (opp)	08:42	09:29	19:40
CLAYTON-LE-MOORS, Sydney Street (opp)	08:48	09:34	19:44
<b>ACCRINGTON, Arrival Stand (Stand 0)</b>	08:52	09:39	19:46

---

### Key

- BTL - Boomerang Travel Ltd

## 22 CLITHEROE - SHADSWORTH via Langho, Wilpshire (outbound)

### Monday to Friday

<i>Operator</i>	<u>LUL</u>	<u>LUL</u>	<u>LUL</u>	<u>LUL</u>	<u>LUL</u>	<u>LUL</u>	<u>LUL</u>	<u>LUL</u>	<u>LUL</u>	<u>LUL</u>	<u>LUL</u>	<u>LUL</u>	<u>LUL</u>
<i>Notes</i>	<i>CG2,SCH NSCH</i>												
<i>Variations</i>													
<b>CLITHEROE TOWN CENTRE,Interchange (Stand 6)</b>	----	06:10	06:40	07:10	07:35	07:55	----	08:23	08:32	08:43	09:13	09:43	
CHATBURN ROAD,Grammar School (o/s)	----	----	----	----	----	----	----	08:39	----	----	----	----	----
WHALLEY,Bus Station (Stand A)	----	06:23	06:53	07:23	07:49	08:09	----	08:37	08:57	08:57	09:27	09:57	
LANGHO,Northcote Road (opp)	----	06:30	07:00	07:30	07:56	08:16	----	08:44	09:04	09:04	09:34	10:04	
ROE LEE,Roe Lee Park (opp)	----	06:42	07:12	07:44	08:12	08:32	----	08:56	09:16	09:16	09:46	10:16	
BLACKBURN TOWN CENTRE,Bus Station (Stand 2)	06:30	06:55	07:25	07:59	08:27	08:47	09:05	09:09	09:29	09:29	09:59	10:29	
BLACKBURN TOWN CENTRE,Bus Station (Stand 2)	----	07:00	07:35	08:05	08:35	----	----	09:35	09:35	10:05	10:35		
ROYAL BLACKBURN HOSPITAL,Royal Blackburn Hospital (Stand A)	06:42	07:12	07:47	08:17	08:47	----	09:17	----	09:47	09:47	10:17	10:47	
<b>SHADSWORTH,Shadsworth Road (adj)</b>	06:46	07:16	07:51	08:21	08:51	----	09:21	----	09:51	09:51	10:21	10:51	

<i>Operator</i>	<u>LUL</u>	<u>LUL</u>	<u>LUL</u>	<u>LUL</u>	<u>LUL</u>	<u>LUL</u>	<u>LUL</u>	<u>LUL</u>	<u>LUL</u>	<u>LUL</u>	<u>LUL</u>	<u>LUL</u>	<u>LUL</u>
<i>Notes</i>	<i>CG2,SCH NSCH</i>												
<i>Variations</i>	<i>W</i>												
<b>CLITHEROE TOWN CENTRE,Interchange (Stand 6)</b>	10:13	10:43	11:13	11:43	12:13	12:43	13:13	13:43	14:13	----	14:43	14:53	
CHATBURN ROAD,Grammar School (o/s)	----	----	----	----	----	----	----	----	----	----	14:53	----	----
WHALLEY,Bus Station (Stand A)	10:27	10:57	11:27	11:57	12:27	12:57	13:27	13:57	14:27	----	15:12	15:07	
LANGHO,Northcote Road (opp)	10:34	11:04	11:34	12:04	12:34	13:04	13:34	14:04	14:34	----	15:19	15:14	
ROE LEE,Roe Lee Park (opp)	10:46	11:16	11:46	12:16	12:46	13:16	13:46	14:16	14:46	----	15:31	15:26	
BLACKBURN TOWN CENTRE,Bus Station (Stand 2)	10:59	11:29	11:59	12:29	12:59	13:29	13:59	14:29	14:59	15:30	15:45	15:40	
BLACKBURN TOWN CENTRE,Bus Station (Stand 2)	11:05	11:35	12:05	12:35	13:05	13:35	14:05	14:35	15:05	----	15:50	15:50	
ROYAL BLACKBURN HOSPITAL,Royal Blackburn Hospital (Stand A)	11:17	11:47	12:17	12:47	13:17	13:47	14:18	14:48	15:18	15:43	16:03	16:03	
<b>SHADSWORTH,Shadsworth Road (adj)</b>	11:21	11:51	12:21	12:51	13:21	13:51	14:22	14:52	15:22	15:47	16:07	16:07	

<i>Operator</i>	<u>LUL</u>	<u>LUL</u>	<u>LUL</u>	<u>LUL</u>	<u>LUL</u>	<u>LUL</u>	<u>LUL</u>	<u>LUL</u>	<u>LUL</u>	<u>LUL</u>	<u>LUL</u>	<u>LUL</u>	<u>LUL</u>
<i>Notes</i>	<i>SCH</i>		<i>CG2,SCH</i>		<i>NSCH</i>		<i>SCH</i>						
<i>Variations</i>	<i>NW</i>		<i>NW</i>		<i>W</i>								
<b>CLITHEROE TOWN CENTRE,Interchange (Stand 6)</b>	14:53	15:23	15:43	15:53	15:53	16:23	16:53	17:13	17:43	18:13	18:33	18:53	
CHATBURN ROAD,Grammar School (o/s)	----	----	15:53	----	----	----	----	----	----	----	----	----	----
WHALLEY,Bus Station (Stand A)	15:07	15:39	16:12	16:09	16:09	16:39	17:09	17:29	17:56	18:26	18:46	19:06	
LANGHO,Northcote Road (opp)	15:14	15:46	16:19	16:16	16:16	16:46	17:16	17:36	18:02	18:32	18:51	19:11	
ROE LEE,Roe Lee Park (opp)	15:26	15:58	16:31	16:28	16:28	16:58	17:28	17:48	18:14	18:44	19:00	19:20	

BLACKBURN TOWN CENTRE, Bus Station (Stand 2)	15:40	16:12	16:45	16:42	16:42	17:12	17:42	18:02	18:25	18:55	19:09	19:29
BLACKBURN TOWN CENTRE, Bus Station (Stand 2)	15:50	16:20	16:50	16:50	16:50	17:20	17:50	18:10	----	19:05	----	----
ROYAL BLACKBURN HOSPITAL, Royal Blackburn Hospital (Stand A)	16:03	16:33	17:03	17:03	17:03	17:33	18:03	18:22	----	19:13	----	----
<b>SHADSWORTH, Shadsworth Road (adj)</b>	16:07	16:37	17:07	17:07	17:07	17:37	18:07	18:26	----	19:16	----	----

Operator LUL

Notes

Variations

<b>CLITHEROE TOWN CENTRE, Interchange (Stand 6)</b>	19:23
CHATBURN ROAD, Grammar School (o/s)	----
WHALLEY, Bus Station (Stand A)	19:36
LANGHO, Northcote Road (opp)	19:41
ROE LEE, Roe Lee Park (opp)	19:50
BLACKBURN TOWN CENTRE, Bus Station (Stand 2)	19:59
BLACKBURN TOWN CENTRE, Bus Station (Stand 2)	20:05
ROYAL BLACKBURN HOSPITAL, Royal Blackburn Hospital (Stand A)	20:13
<b>SHADSWORTH, Shadsworth Road (adj)</b>	20:16

## Saturday

Operator LUL LUL LUL LUL LUL LUL LUL LUL LUL LUL LUL LUL LUL

Notes

<b>CLITHEROE TOWN CENTRE, Interchange (Stand 6)</b>	----	----	07:13	07:43	08:13	08:43	09:13	09:43	10:13	10:43	11:13	11:43
WHALLEY, Bus Station (Stand A)	----	06:57	07:27	07:57	08:27	08:57	09:27	09:57	10:27	10:57	11:27	11:57
LANGHO, Northcote Road (opp)	----	07:04	07:34	08:04	08:34	09:04	09:34	10:04	10:34	11:04	11:34	12:04
ROE LEE, Roe Lee Park (opp)	----	07:16	07:46	08:16	08:46	09:16	09:46	10:16	10:46	11:16	11:46	12:16
BLACKBURN TOWN CENTRE, Bus Station (Stand 2)	06:35	07:29	07:59	08:29	08:59	09:29	09:59	10:29	10:59	11:29	11:59	12:29
BLACKBURN TOWN CENTRE, Bus Station (Stand 2)	----	07:35	08:05	08:35	09:05	09:35	10:05	10:35	11:05	11:35	12:05	12:35
ROYAL BLACKBURN HOSPITAL, Royal Blackburn Hospital (Stand A)	06:47	07:47	08:17	08:47	09:17	09:47	10:17	10:47	11:17	11:47	12:17	12:47
<b>SHADSWORTH, Shadsworth Road (adj)</b>	06:51	07:51	08:21	08:51	09:21	09:51	10:21	10:51	11:21	11:51	12:21	12:51

Operator LUL LUL LUL LUL LUL LUL LUL LUL LUL LUL LUL LUL LUL

Notes

<b>CLITHEROE TOWN CENTRE, Interchange (Stand 6)</b>	12:13	12:43	13:13	13:43	14:13	14:43	15:13	15:43	16:13	16:43	17:13	17:43
WHALLEY, Bus Station (Stand A)	12:27	12:57	13:27	13:57	14:27	14:57	15:27	15:57	16:27	16:57	17:26	17:56
LANGHO, Northcote Road (opp)	12:34	13:04	13:34	14:04	14:34	15:04	15:34	16:04	16:34	17:04	17:32	18:02
ROE LEE, Roe Lee Park (opp)	12:46	13:16	13:46	14:16	14:46	15:16	15:46	16:16	16:46	17:16	17:44	18:14
BLACKBURN TOWN CENTRE, Bus Station (Stand 2)	12:59	13:29	13:59	14:29	14:59	15:29	15:59	16:29	16:59	17:29	17:55	18:25





**Saturday**

<i>Operator</i>	<u>LUL</u> <u>LUL</u> <u>LUL</u> <u>LUL</u> <u>LUL</u> <u>LUL</u> <u>LUL</u> <u>LUL</u> <u>LUL</u> <u>LUL</u> <u>LUL</u> <u>LUL</u>
<i>Notes</i>	
<b>SHADSWORTH,Shadsworth Road (adj)</b>	---- 06:28 06:52 07:22 07:52 08:22 08:52 09:22 09:52 10:22 10:52 11:22
ROYAL BLACKBURN HOSPITAL,Royal Blackburn Hospital (Stand B)	---- 06:38 07:03 07:33 08:03 08:33 09:03 09:33 10:03 10:33 11:03 11:33
BLACKBURN TOWN CENTRE,Bus Station (Stand 10)	06:25 06:49 07:16 07:46 08:16 08:46 09:16 09:46 10:16 10:46 11:16 11:46
BLACKBURN TOWN CENTRE,Bus Station (Stand 10)	---- 06:55 07:25 07:55 08:25 08:55 09:25 09:55 10:25 10:55 11:25 11:55
ROE LEE,Roe Lee Park (adj)	06:33 07:03 07:33 08:05 08:35 09:05 09:35 10:05 10:35 11:05 11:35 12:05
LANGHO,Railway Station (by)	06:44 07:14 07:44 08:17 08:47 09:17 09:47 10:17 10:47 11:17 11:47 12:17
WHALLEY,Post Office (o/s)	06:53 07:23 07:53 08:26 08:56 09:26 09:56 10:26 10:56 11:26 11:56 12:26
<b>CLITHEROE TOWN CENTRE,Interchange (Stand 6)</b>	07:05 07:35 08:05 08:38 09:08 09:38 10:08 10:38 11:08 11:38 12:08 12:38

<i>Operator</i>	<u>LUL</u> <u>LUL</u> <u>LUL</u> <u>LUL</u> <u>LUL</u> <u>LUL</u> <u>LUL</u> <u>LUL</u> <u>LUL</u> <u>LUL</u> <u>LUL</u> <u>LUL</u>
<i>Notes</i>	
<b>SHADSWORTH,Shadsworth Road (adj)</b>	11:52 12:22 12:52 13:22 13:52 14:22 14:52 15:22 15:52 16:22 16:52 17:22
ROYAL BLACKBURN HOSPITAL,Royal Blackburn Hospital (Stand B)	12:03 12:33 13:03 13:33 14:03 14:33 15:03 15:33 16:03 16:33 17:03 17:33
BLACKBURN TOWN CENTRE,Bus Station (Stand 10)	12:16 12:46 13:16 13:46 14:16 14:46 15:16 15:46 16:16 16:46 17:16 17:46
BLACKBURN TOWN CENTRE,Bus Station (Stand 10)	12:25 12:55 13:25 13:55 14:25 14:55 15:25 15:55 16:25 16:55 17:25 17:55
ROE LEE,Roe Lee Park (adj)	12:35 13:05 13:35 14:05 14:35 15:05 15:35 16:05 16:35 17:05 17:35 18:03
LANGHO,Railway Station (by)	12:47 13:17 13:47 14:17 14:47 15:17 15:47 16:17 16:47 17:17 17:47 18:13
WHALLEY,Post Office (o/s)	12:56 13:26 13:56 14:26 14:56 15:26 15:56 16:26 16:56 17:26 17:56 18:22
<b>CLITHEROE TOWN CENTRE,Interchange (Stand 6)</b>	13:08 13:38 14:08 14:38 15:08 15:38 16:08 16:38 17:08 17:38 18:08 18:34

<i>Operator</i>	<u>LUL</u> <u>LUL</u> <u>LUL</u> <u>LUL</u>
<i>Notes</i>	
<b>SHADSWORTH,Shadsworth Road (adj)</b>	17:52 18:17 19:17 20:17
ROYAL BLACKBURN HOSPITAL,Royal Blackburn Hospital (Stand B)	18:03 18:25 19:25 20:25
BLACKBURN TOWN CENTRE,Bus Station (Stand 10)	18:16 18:35 19:35 20:35
BLACKBURN TOWN CENTRE,Bus Station (Stand 10)	---- 18:40 ---- ----
ROE LEE,Roe Lee Park (adj)	---- 18:48 ---- ----
LANGHO,Railway Station (by)	---- 18:58 ---- ----
WHALLEY,Post Office (o/s)	---- 19:07 ---- ----
<b>CLITHEROE TOWN CENTRE,Interchange (Stand 6)</b>	---- 19:19 ---- ----

**Sunday**

<i>Operator</i>	<u>LUL</u> <u>LUL</u> <u>LUL</u> <u>LUL</u> <u>LUL</u> <u>LUL</u> <u>LUL</u> <u>LUL</u> <u>LUL</u> <u>LUL</u> <u>LUL</u> <u>LUL</u>
<i>Notes</i>	
<b>SHADSWORTH,Shadsworth Road (adj)</b>	---- ---- 10:24 ---- 11:24 ---- 12:24 ---- 13:24 ---- 14:24 ----
ROYAL BLACKBURN HOSPITAL,Royal Blackburn Hospital (Stand B)	---- ---- 10:32 ---- 11:32 ---- 12:32 ---- 13:32 ---- 14:32 ----

BLACKBURN TOWN CENTRE, Bus Station (Stand 10)	09:30	10:30	10:42	11:30	11:42	12:30	12:42	13:30	13:42	14:30	14:42	15:30
BLACKBURN TOWN CENTRE, Bus Station (Stand 10)	----	----	----	----	----	----	----	----	----	----	----	----
ROE LEE, Roe Lee Park (adj)	09:38	10:38	----	11:38	----	12:38	----	13:38	----	14:38	----	15:38
LANGHO, Railway Station (by)	09:50	10:50	----	11:50	----	12:50	----	13:50	----	14:50	----	15:50
WHALLEY, Post Office (o/s)	09:59	10:59	----	11:59	----	12:59	----	13:59	----	14:59	----	15:59
<b>CLITHEROE TOWN CENTRE, Interchange (Stand 6)</b>	10:11	11:11	----	12:11	----	13:11	----	14:11	----	15:11	----	16:11

Operator *LUL LUL LUL*

Notes

<b>SHADSWORTH, Shadsworth Road (adj)</b>	15:24	----	16:24
ROYAL BLACKBURN HOSPITAL, Royal Blackburn Hospital (Stand B)	15:32	----	16:32
BLACKBURN TOWN CENTRE, Bus Station (Stand 10)	15:42	16:30	16:42
BLACKBURN TOWN CENTRE, Bus Station (Stand 10)	----	----	----
ROE LEE, Roe Lee Park (adj)	----	16:38	----
LANGHO, Railway Station (by)	----	16:50	----
WHALLEY, Post Office (o/s)	----	16:59	----
<b>CLITHEROE TOWN CENTRE, Interchange (Stand 6)</b>	----	17:11	----

## Key

- NSCH - Not Clitheroe Grammar School
- SCH - Clitheroe Grammar School only
- CG1 - Continues to Clitheroe Royal Grammar School on school days only
- SCH - Clitheroe Grammar School only
- CG2 - Operates via Clitheroe Royal Grammar School
- SCH - Clitheroe Grammar School only
- CG1 - Continues to Clitheroe Royal Grammar School on school days only
- NSCH - Not Clitheroe Grammar School
- LUL - Transdev Lancashire United Ltd

**66 CLITHEROE - NELSON via Waddington, West Bradford, Grindleton, Downham, Newchurch (outbound)**

**Monday to Friday**

<i>Operator</i>	<u><i>BTL</i></u>	<u><i>BTL</i></u>	<u><i>BTL</i></u>	<u><i>BTL</i></u>
<i>Notes</i>	\$	\$	\$	\$
<b>CLITHEROE TOWN CENTRE,Interchange (Stand 3)</b>	07:27	09:37	11:37	13:37
CLITHEROE TOWN CENTRE,Market Place (Stand A)	07:28	09:38	11:38	13:38
WADDINGTON,Hospital (o/s)	07:35	09:45	11:45	13:45
WEST BRADFORD,Chapel Lane (opp)	07:39	09:49	11:49	13:49
GRINDLETON,Stone Hill Farm (opp)	07:44	09:54	11:54	13:54
CHATBURN,Post Office (by)	07:49	09:59	11:59	13:59
DOWNHAM,St Leonards Church (opp)	07:54	10:04	12:04	14:04
BARLEY-WITH-WHEATLEY BOOTH,Barley Mow (by)	08:03	10:13	12:13	14:13
NEWCHURCH IN PENDLE,Witches Galore (opp)	08:06	10:16	12:16	14:16
FENCE,Village Stores (opp)	08:12	10:22	12:22	14:22
LOMESHAYE,Business Village (by)	08:19	10:28	12:28	14:28
NELSON,Morrisons (Stop 4)	08:26	10:34	12:34	14:34
<b>NELSON,Bus Station (Stand 9)</b>	08:31	10:38	12:38	14:38

**Saturday**

<i>Operator</i>	<u><i>BTL</i></u>	<u><i>BTL</i></u>	<u><i>BTL</i></u>	<u><i>BTL</i></u>	<u><i>BTL</i></u>
<i>Notes</i>	\$	\$	\$	\$	\$
<b>CLITHEROE TOWN CENTRE,Interchange (Stand 3)</b>	07:37	09:37	11:37	13:37	16:02
CLITHEROE TOWN CENTRE,Market Place (Stand A)	07:38	09:38	11:38	13:38	16:03
WADDINGTON,Hospital (o/s)	07:45	09:45	11:45	13:45	16:10
WEST BRADFORD,Chapel Lane (opp)	07:49	09:49	11:49	13:49	16:14
GRINDLETON,Stone Hill Farm (opp)	07:54	09:54	11:54	13:54	16:19
CHATBURN,Post Office (by)	07:59	09:59	11:59	13:59	16:24
DOWNHAM,St Leonards Church (opp)	08:04	10:04	12:04	14:04	16:29
BARLEY-WITH-WHEATLEY BOOTH,Barley Mow (by)	08:13	10:13	12:13	14:13	16:38
NEWCHURCH IN PENDLE,Witches Galore (opp)	08:16	10:16	12:16	14:16	16:41
FENCE,Village Stores (opp)	08:22	10:22	12:22	14:22	16:47
LOMESHAYE,Business Village (by)	08:28	10:28	12:28	14:28	16:53
NELSON,Morrisons (Stop 4)	08:34	10:34	12:34	14:34	16:59
<b>NELSON,Bus Station (Stand 9)</b>	08:38	10:38	12:38	14:38	17:03

**66 CLITHEROE - NELSON via Waddington, West Bradford, Grindleton, Downham, Newchurch (inbound)**

**Monday to Friday**

<i>Operator</i>	<u><i>BTL</i></u>	<u><i>BTL</i></u>	<u><i>BTL</i></u>	<u><i>BTL</i></u>	<u><i>BTL</i></u>	<u><i>BTL</i></u>	<u><i>BTL</i></u>
<i>Notes</i>	\$	\$	\$	\$	\$	\$	\$
<b>NELSON,Bus Station (Stand 8)</b>	06:25	----	08:45	10:45	12:45	14:50	17:15
NELSON,Morrison (Stop 3)	06:29	----	08:49	10:49	12:49	14:54	17:19
LOMESHAYE,Business Village (by)	06:34	----	08:54	10:54	12:54	14:59	17:24
FENCE,Village Store (by)	06:42	07:47	09:02	11:02	13:02	15:07	17:32
NEWCHURCH IN PENDLE,Witches Galore (o/s)	06:47	07:52	09:07	11:07	13:07	15:12	17:37
BARLEY-WITH-WHEATLEY BOOTH,Village Hall (by)	06:49	07:54	09:09	11:09	13:09	15:14	17:39
DOWNHAM,St Leonards Church (o/s)	06:59	08:04	09:19	11:19	13:19	15:24	17:49

CHATBURN,Post Office (opp)	07:04	08:09	09:24	11:24	13:24	15:29	17:54
GRINDLETON,Stone Hill Farm (opp)	07:09	08:14	09:29	11:29	13:29	15:34	17:59
WEST BRADFORD,Chapel Lane (by)	07:14	08:19	09:34	11:34	13:34	15:39	18:04
WADDINGTON,Waddington Arms (by)	07:18	08:23	09:38	11:38	13:38	15:43	18:08
<b>CLITHEROE TOWN CENTRE,Interchange (Stand 9)</b>	07:25	08:30	09:45	11:45	13:45	15:50	18:15

## Saturday

<i>Operator</i>	<u>BTL</u>	<u>BTL</u>	<u>BTL</u>	<u>BTL</u>	<u>BTL</u>
<i>Notes</i>	\$	\$	\$	\$	\$
<b>NELSON,Bus Station (Stand 8)</b>	08:45	10:45	12:45	14:50	17:15
NELSON,Morrison (Stop 3)	08:49	10:49	12:49	14:54	17:19
LOMESHAYE,Business Village (by)	08:54	10:54	12:54	14:59	17:24
FENCE,Village Store (by)	09:02	11:02	13:02	15:07	17:32
NEWCHURCH IN PENDLE,Witches Galore (o/s)	09:07	11:07	13:07	15:12	17:37
BARLEY-WITH-WHEATLEY BOOTH,Village Hall (by)	09:09	11:09	13:09	15:14	17:39
DOWNHAM,St Leonards Church (o/s)	09:19	11:19	13:19	15:24	17:49
CHATBURN,Post Office (opp)	09:24	11:24	13:24	15:29	17:54
GRINDLETON,Stone Hill Farm (opp)	09:29	11:29	13:29	15:34	17:59
WEST BRADFORD,Chapel Lane (by)	09:34	11:34	13:34	15:39	18:04
WADDINGTON,Waddington Arms (by)	09:38	11:38	13:38	15:43	18:08
<b>CLITHEROE TOWN CENTRE,Interchange (Stand 9)</b>	09:45	11:45	13:45	15:50	18:15

## Key

- \$ - Operated on behalf of Lancashire County Council
- BTL - Boomerang Travel Ltd

## M2 COLNE - CLITHEROE via Nelson, Brierfield, Read, Whalley (outbound)

### Monday to Friday

<i>Operator</i>	<u>BPT</u>	<u>BPT</u>	<u>BPT</u>	<u>BPT</u>	<u>BPT</u>	<u>BPT</u>	<u>BPT</u>	<u>BPT</u>	<u>BPT</u>	<u>BPT</u>	<u>BPT</u>	<u>BPT</u>
<i>Notes</i>												
<b>COLNE, Bus Station (Stand 1)</b>	05:00	05:30	----	----	----	----	----	07:03	07:19	07:47	08:17	08:47
COLNE, The Golden Ball (opp)	05:05	05:35	----	----	----	----	----	07:08	07:25	07:55	08:25	08:55
NELSON, Bus Station (Stand 3)	05:11	05:41	----	----	06:51	----	----	07:15	07:32	08:04	08:36	09:06
NELSON, Bus Station (Stand 3)	05:13	05:43	----	----	----	----	----	07:17	07:34	08:06	08:38	09:08
BRIERFIELD, Town Hall (o/s)	05:17	05:47	----	----	06:55	----	----	07:22	07:41	08:14	08:45	09:15
QUEENSGATE, Queensgate Depot (opp)	05:22	05:52	06:02	06:32	07:00	----	----	07:27	07:46	08:19	08:50	09:20
BURNLEY, Bus Station (Stand 4)	05:28	05:58	06:08	06:38	07:06	07:33	07:40	07:36	07:56	08:30	09:00	09:30
BURNLEY, Bus Station (Stand 4)	05:32	06:02	06:12	06:42	07:10	----	----	----	08:01	08:35	09:05	09:35
PADIHAM ROAD, Tim Bobbin (opp)	05:38	06:08	06:18	06:48	07:16	07:41	07:48	----	08:10	08:44	09:14	09:44
PADIHAM, Bridge Inn (by)	05:44	06:14	06:24	06:54	07:22	07:49	07:56	----	08:18	08:52	09:22	09:52
PADIHAM, Slade Lane (by)	----	----	06:28	06:58	07:26	07:53	08:00	----	08:22	08:56	09:26	09:56
PADIHAM, Shuttleworth Mead (by)	05:48	06:18	----	----	----	----	----	----	----	----	----	----
ALTHAM, Simon Jersey (by)	05:52	06:22	----	----	----	----	----	----	----	----	----	----
WHALLEY, Post Office (o/s)	----	----	06:43	07:13	07:41	----	08:16	----	08:38	09:12	09:42	10:12
<b>CLITHEROE TOWN CENTRE, Interchange (Stand 6)</b>	----	----	06:55	07:25	07:53	----	08:29	----	08:51	09:25	09:55	10:25

<i>Operator</i>	<u>BPT</u>	<u>BPT</u>	<u>BPT</u>	<u>BPT</u>	<u>BPT</u>	<u>BPT</u>	<u>BPT</u>	<u>BPT</u>	<u>BPT</u>	<u>BPT</u>	<u>BPT</u>	<u>BPT</u>
<i>Notes</i>												
<b>COLNE, Bus Station (Stand 1)</b>	09:23	09:53	10:23	10:53	11:23	11:53	12:23	12:53	13:23	13:53	14:23	14:53
COLNE, The Golden Ball (opp)	09:29	09:59	10:29	10:59	11:29	11:59	12:29	12:59	13:29	13:59	14:29	14:59
NELSON, Bus Station (Stand 3)	09:36	10:06	10:36	11:06	11:36	12:06	12:36	13:06	13:36	14:06	14:36	15:06
NELSON, Bus Station (Stand 3)	09:38	10:08	10:38	11:08	11:38	12:08	12:38	13:08	13:38	14:08	14:38	15:08
BRIERFIELD, Town Hall (o/s)	09:45	10:15	10:45	11:15	11:45	12:15	12:45	13:15	13:45	14:15	14:45	15:15
QUEENSGATE, Queensgate Depot (opp)	09:50	10:20	10:50	11:20	11:50	12:20	12:50	13:20	13:50	14:20	14:50	15:20
BURNLEY, Bus Station (Stand 4)	10:00	10:30	11:00	11:30	12:00	12:30	13:00	13:30	14:00	14:30	15:00	15:30
BURNLEY, Bus Station (Stand 4)	10:05	10:35	11:05	11:35	12:05	12:35	13:05	13:35	14:05	14:35	15:05	15:35
PADIHAM ROAD, Tim Bobbin (opp)	10:14	10:44	11:14	11:44	12:14	12:44	13:14	13:44	14:14	14:44	15:14	15:44
PADIHAM, Bridge Inn (by)	10:22	10:52	11:22	11:52	12:22	12:52	13:22	13:52	14:22	14:52	15:22	15:52
PADIHAM, Slade Lane (by)	10:26	10:56	11:26	11:56	12:26	12:56	13:26	13:56	14:26	14:56	15:26	15:56
PADIHAM, Shuttleworth Mead (by)	----	----	----	----	----	----	----	----	----	----	----	----
ALTHAM, Simon Jersey (by)	----	----	----	----	----	----	----	----	----	----	----	----
WHALLEY, Post Office (o/s)	10:42	11:12	11:42	12:12	12:42	13:12	13:42	14:12	14:42	15:12	15:42	16:12
<b>CLITHEROE TOWN CENTRE, Interchange (Stand 6)</b>	10:55	11:25	11:55	12:25	12:55	13:25	13:55	14:25	14:55	15:25	15:55	16:25

<i>Operator</i>	<u>BPT</u>	<u>BPT</u>	<u>BPT</u>	<u>BPT</u>	<u>BPT</u>	<u>BPT</u>	<u>BPT</u>	
<i>Notes</i>								
<b>COLNE, Bus Station (Stand 1)</b>	15:23	15:45	16:00	16:30	17:00	17:35	20:21	
COLNE, The Golden Ball (opp)	15:30	15:52	16:07	16:37	17:07	17:42	20:26	
NELSON, Bus Station (Stand 3)	15:38	16:02	16:17	16:47	17:17	17:52	20:33	
NELSON, Bus Station (Stand 3)	15:40	16:04	16:19	16:49	17:19	17:54	20:35	
BRIERFIELD, Town Hall (o/s)	15:48	16:12	16:27	16:57	17:27	18:02	20:40	
QUEENSGATE, Queensgate Depot (opp)	15:53	16:17	16:32	17:02	17:32	18:07	20:44	
BURNLEY, Bus Station (Stand 4)	16:03	16:27	16:42	17:12	17:42	18:17	19:13	20:53
BURNLEY, Bus Station (Stand 4)	16:08	16:32	16:47	17:17	17:47	----	----	20:58

PADIHAM ROAD, Tim Bobbin (opp)	16:17	16:42	16:57	17:27	17:57	----	19:21	21:06
PADIHAM, Bridge Inn (by)	16:25	16:52	17:07	17:37	18:07	----	19:27	21:12
PADIHAM, Slade Lane (by)	16:29	16:56	17:11	17:41	18:11	----	19:31	21:16
PADIHAM, Shuttleworth Mead (by)	----	----	----	----	----	----	----	----
ALTHAM, Simon Jersey (by)	----	----	----	----	----	----	----	----
WHALLEY, Post Office (o/s)	16:45	----	17:27	17:57	18:27	----	19:46	21:31
<b>CLITHEROE TOWN CENTRE, Interchange (Stand 6)</b>	16:58	----	17:40	18:10	18:40	----	19:58	21:43

## Saturday

<i>Operator</i>	<u>BPT</u>	<u>BPT</u>	<u>BPT</u>	<u>BPT</u>	<u>BPT</u>	<u>BPT</u>	<u>BPT</u>	<u>BPT</u>	<u>BPT</u>	<u>BPT</u>	<u>BPT</u>	<u>BPT</u>
<i>Notes</i>												
<b>COLNE, Bus Station (Stand 1)</b>	06:00	----	----	----	07:43	08:13	08:53	09:23	09:53	10:23	10:53	11:23
COLNE, The Golden Ball (opp)	06:05	----	----	----	07:49	08:19	08:59	09:29	09:59	10:29	10:59	11:29
NELSON, Bus Station (Stand 3)	06:11	----	----	----	07:56	08:26	09:06	09:36	10:06	10:36	11:06	11:36
NELSON, Bus Station (Stand 3)	06:13	----	----	----	07:58	08:28	09:08	09:38	10:08	10:38	11:08	11:38
BRIERFIELD, Town Hall (o/s)	06:17	----	----	----	08:05	08:35	09:15	09:45	10:15	10:45	11:15	11:45
QUEENSGATE, Queensgate Depot (opp)	06:22	----	----	----	08:10	08:40	09:20	09:50	10:20	10:50	11:20	11:50
BURNLEY, Bus Station (Stand 4)	06:28	07:10	07:38	08:05	08:20	08:50	09:30	10:00	10:30	11:00	11:30	12:00
BURNLEY, Bus Station (Stand 4)	06:32	----	----	----	08:25	08:55	09:35	10:05	10:35	11:05	11:35	12:05
PADIHAM ROAD, Tim Bobbin (opp)	06:38	07:16	07:46	08:14	08:34	09:04	09:44	10:14	10:44	11:14	11:44	12:14
PADIHAM, Bridge Inn (by)	06:44	07:22	07:54	08:22	08:42	09:12	09:52	10:22	10:52	11:22	11:52	12:22
PADIHAM, Slade Lane (by)	06:48	07:26	07:58	08:26	08:46	09:16	09:56	10:26	10:56	11:26	11:56	12:26
WHALLEY, Post Office (o/s)	07:03	07:41	08:14	08:42	09:02	09:32	10:12	10:42	11:12	11:42	12:12	12:42
<b>CLITHEROE TOWN CENTRE, Interchange (Stand 6)</b>	07:15	07:53	08:27	08:55	09:15	09:45	10:25	10:55	11:25	11:55	12:25	12:55

<i>Operator</i>	<u>BPT</u>	<u>BPT</u>	<u>BPT</u>	<u>BPT</u>	<u>BPT</u>	<u>BPT</u>	<u>BPT</u>	<u>BPT</u>	<u>BPT</u>	<u>BPT</u>	<u>BPT</u>	<u>BPT</u>
<i>Notes</i>												
<b>COLNE, Bus Station (Stand 1)</b>	11:53	12:23	12:53	13:23	13:53	14:23	14:53	15:23	15:53	16:23	16:53	----
COLNE, The Golden Ball (opp)	11:59	12:29	12:59	13:29	13:59	14:29	14:59	15:29	15:59	16:29	16:59	----
NELSON, Bus Station (Stand 3)	12:06	12:36	13:06	13:36	14:06	14:36	15:06	15:36	16:06	16:36	17:06	----
NELSON, Bus Station (Stand 3)	12:08	12:38	13:08	13:38	14:08	14:38	15:08	15:38	16:08	16:38	17:08	----
BRIERFIELD, Town Hall (o/s)	12:15	12:45	13:15	13:45	14:15	14:45	15:15	15:45	16:15	16:45	17:15	----
QUEENSGATE, Queensgate Depot (opp)	12:20	12:50	13:20	13:50	14:20	14:50	15:20	15:50	16:20	16:50	17:20	----
BURNLEY, Bus Station (Stand 4)	12:30	13:00	13:30	14:00	14:30	15:00	15:30	16:00	16:30	17:00	17:30	19:13
BURNLEY, Bus Station (Stand 4)	12:35	13:05	13:35	14:05	14:35	15:05	15:35	16:05	16:35	17:05	17:35	----
PADIHAM ROAD, Tim Bobbin (opp)	12:44	13:14	13:44	14:14	14:44	15:14	15:44	16:14	16:44	17:14	17:44	19:21
PADIHAM, Bridge Inn (by)	12:52	13:22	13:52	14:22	14:52	15:22	15:52	16:22	16:52	17:22	17:52	19:27
PADIHAM, Slade Lane (by)	12:56	13:26	13:56	14:26	14:56	15:26	15:56	16:26	16:56	17:26	17:56	19:31
WHALLEY, Post Office (o/s)	13:12	13:42	14:12	14:42	15:12	15:42	16:12	16:42	17:12	17:42	18:12	19:46
<b>CLITHEROE TOWN CENTRE, Interchange (Stand 6)</b>	13:25	13:55	14:25	14:55	15:25	15:55	16:25	16:55	17:25	17:55	18:25	19:58

<i>Operator</i>	<u>BPT</u>
<i>Notes</i>	
<b>COLNE, Bus Station (Stand 1)</b>	20:21
COLNE, The Golden Ball (opp)	20:26
NELSON, Bus Station (Stand 3)	20:33
NELSON, Bus Station (Stand 3)	20:35
BRIERFIELD, Town Hall (o/s)	20:40

QUEENSGATE,Queensgate Depot (opp)	20:44
BURNLEY,Bus Station (Stand 4)	20:53
BURNLEY,Bus Station (Stand 4)	20:58
PADIHAM ROAD,Tim Bobbin (opp)	21:06
PADIHAM,Bridge Inn (by)	21:12
PADIHAM,Slade Lane (by)	21:16
WHALLEY,Post Office (o/s)	21:31
<b>CLITHEROE TOWN CENTRE,Interchange (Stand 6)</b>	21:43

**Sunday**

<i>Operator</i>	<u>BPT</u>	<u>BPT</u>	<u>BPT</u>	<u>BPT</u>	<u>BPT</u>	<u>BPT</u>	<u>BPT</u>	<u>BPT</u>	<u>BPT</u>	<u>BPT</u>	<u>BPT</u>	<u>BPT</u>
<i>Notes</i>												
<b>COLNE,Bus Station (Stand 1)</b>	----	08:21	----	10:19	----	12:19	----	14:19	----	16:19	----	18:21
COLNE,The Golden Ball (opp)	----	08:26	----	10:25	----	12:25	----	14:25	----	16:25	----	18:26
NELSON,Bus Station (Stand 3)	----	08:33	----	10:32	----	12:32	----	14:32	----	16:32	----	18:33
NELSON,Bus Station (Stand 3)	----	08:35	----	10:34	----	12:34	----	14:34	----	16:34	----	18:35
BRIERFIELD,Town Hall (o/s)	----	08:40	----	10:40	----	12:40	----	14:40	----	16:40	----	18:40
QUEENSGATE,Queensgate Depot (opp)	07:59	08:44	----	10:45	----	12:45	----	14:45	----	16:45	----	18:44
BURNLEY,Bus Station (Stand 4)	08:08	08:53	09:58	10:53	11:58	12:53	13:58	14:53	15:58	16:53	17:58	18:53
BURNLEY,Bus Station (Stand 4)	08:13	08:58	----	10:58	----	12:58	----	14:58	----	16:58	----	18:58
PADIHAM ROAD,Tim Bobbin (opp)	08:21	09:06	10:06	11:06	12:06	13:06	14:06	15:06	16:06	17:06	18:06	19:06
PADIHAM,Bridge Inn (by)	08:27	09:12	10:13	11:13	12:13	13:13	14:13	15:13	16:13	17:13	18:13	19:12
PADIHAM,Slade Lane (by)	08:31	09:16	10:17	11:17	12:17	13:17	14:17	15:17	16:17	17:17	18:17	19:16
WHALLEY,Post Office (o/s)	----	09:31	10:32	11:32	12:32	13:32	14:32	15:32	16:32	17:32	18:32	19:31
<b>CLITHEROE TOWN CENTRE,Interchange (Stand 6)</b>	----	09:43	10:45	11:45	12:45	13:45	14:45	15:45	16:45	17:45	18:45	19:43

<i>Operator</i>	<u>BPT</u>	<u>BPT</u>	<u>BPT</u>	<u>BPT</u>
<i>Notes</i>				
<b>COLNE,Bus Station (Stand 1)</b>	----	----	----	22:06
COLNE,The Golden Ball (opp)	----	----	----	22:11
NELSON,Bus Station (Stand 3)	----	----	----	22:18
NELSON,Bus Station (Stand 3)	----	----	----	22:20
BRIERFIELD,Town Hall (o/s)	----	----	----	22:25
QUEENSGATE,Queensgate Depot (opp)	----	----	----	22:29
BURNLEY,Bus Station (Stand 4)	20:58	21:28	21:58	22:38
BURNLEY,Bus Station (Stand 4)	----	----	----	22:43
PADIHAM ROAD,Tim Bobbin (opp)	21:06	21:36	22:06	22:51
PADIHAM,Bridge Inn (by)	21:12	21:42	22:12	22:57
PADIHAM,Slade Lane (by)	21:16	21:46	22:16	23:01
WHALLEY,Post Office (o/s)	----	----	----	----
<b>CLITHEROE TOWN CENTRE,Interchange (Stand 6)</b>	----	----	----	----

**M2 COLNE - CLITHEROE via Nelson, Brierfield, Read, Whalley (inbound)**

**Monday to Friday**

<i>Operator</i>	<u>BPT</u>	<u>BPT</u>	<u>BPT</u>	<u>BPT</u>	<u>BPT</u>	<u>BPT</u>	<u>BPT</u>	<u>BPT</u>	<u>BPT</u>	<u>BPT</u>	<u>BPT</u>	<u>BPT</u>
<i>Notes</i>												

CRGS NCRGS

Variations

<b>CLITHEROE TOWN CENTRE,Interchange (Stand 6)</b>	----	----	----	07:00	----	07:34	08:04	08:30	08:38	----	09:08	09:38
CLITHEROE TOWN CENTRE,Well Terrace (Stand B)	----	----	----	07:02	----	07:36	08:06	08:32	08:40	----	09:10	09:40
CHATBURN ROAD,Grammar School (o/s)	----	----	----	----	----	----	----	08:38	----	----	----	----
WHALLEY,Bus Station (Stand C)	----	----	----	07:15	----	07:49	08:19	08:53	08:53	----	09:23	09:53
ALTHAM,Simon Jersey (by)	----	06:07	----	----	----	----	----	----	----	----	----	----
ALTHAM,Simonstone Lane (by)	----	06:11	----	----	----	----	----	----	----	----	----	----
PADIHAM,Slade Lane (adj)	05:12	----	----	07:31	07:55	08:05	08:35	09:09	09:09	----	09:39	10:09
PADIHAM,Bridge Inn (opp)	05:15	06:15	----	07:35	07:59	08:09	08:39	09:13	09:13	----	09:43	10:13
PADIHAM ROAD,Tim Bobbin (by)	05:20	06:20	----	07:43	08:08	08:18	08:48	09:21	09:21	----	09:51	10:21
BURNLEY,Bus Station (Stand 2)	05:27	06:27	07:26	07:52	08:20	08:30	09:00	09:30	09:30	09:35	10:00	10:30
BURNLEY,Bus Station (Stand 2)	----	06:30	----	07:57	08:27	08:35	09:05	----	----	----	10:05	10:35
QUEENSGATE,Queensgate Depot (by)	----	06:36	07:35	08:06	08:36	08:44	09:14	----	----	09:44	10:14	10:44
BRIERFIELD,Town Hall (opp)	----	06:40	07:40	08:11	08:41	08:49	09:19	----	----	09:49	10:19	10:49
NELSON,Bus Station (Stand 7)	----	06:45	07:47	08:20	08:48	08:56	09:26	----	----	09:56	10:26	10:56
NELSON,Bus Station (Stand 7)	----	06:46	07:49	08:22	08:50	08:58	09:28	----	----	09:58	10:28	10:58
COLNE,The Golden Ball (o/s)	----	06:51	07:55	08:31	08:56	09:04	09:34	----	----	10:04	10:34	11:04
<b>COLNE,Bus Station (Stand 4)</b>	----	06:59	08:02	08:40	09:03	09:11	09:41	----	----	10:11	10:41	11:11

Operator BPT BPT BPT BPT BPT BPT BPT BPT BPT BPT BPT BPT BPT

Notes CRGS

Variations W

<b>CLITHEROE TOWN CENTRE,Interchange (Stand 6)</b>	10:08	10:38	11:08	11:38	12:08	12:38	13:08	13:38	14:08	----	14:39	----
CLITHEROE TOWN CENTRE,Well Terrace (Stand B)	10:10	10:40	11:10	11:40	12:10	12:40	13:10	13:40	14:10	----	14:41	----
CHATBURN ROAD,Grammar School (o/s)	----	----	----	----	----	----	----	----	----	----	----	14:40
WHALLEY,Bus Station (Stand C)	10:23	10:53	11:23	11:53	12:23	12:53	13:23	13:53	14:23	----	14:54	14:55
ALTHAM,Simon Jersey (by)	----	----	----	----	----	----	----	----	----	----	----	----
ALTHAM,Simonstone Lane (by)	----	----	----	----	----	----	----	----	----	----	----	----
PADIHAM,Slade Lane (adj)	10:39	11:09	11:39	12:09	12:39	13:09	13:39	14:09	14:39	----	15:10	15:11
PADIHAM,Bridge Inn (opp)	10:43	11:13	11:43	12:13	12:43	13:13	13:43	14:13	14:43	----	15:14	15:15
PADIHAM ROAD,Tim Bobbin (by)	10:51	11:21	11:51	12:21	12:51	13:21	13:51	14:21	14:51	----	15:24	15:25
BURNLEY,Bus Station (Stand 2)	11:00	11:30	12:00	12:30	13:00	13:30	14:00	14:30	15:00	15:19	15:35	15:35
BURNLEY,Bus Station (Stand 2)	11:05	11:35	12:05	12:35	13:05	13:35	14:05	14:35	15:05	----	15:40	----
QUEENSGATE,Queensgate Depot (by)	11:14	11:44	12:14	12:44	13:14	13:44	14:14	14:44	15:14	15:28	15:49	----
BRIERFIELD,Town Hall (opp)	11:19	11:49	12:19	12:49	13:19	13:49	14:19	14:49	15:19	15:33	15:54	----
NELSON,Bus Station (Stand 7)	11:26	11:56	12:26	12:56	13:26	13:56	14:26	14:56	15:26	15:40	16:01	----
NELSON,Bus Station (Stand 7)	11:28	11:58	12:28	12:58	13:28	13:58	14:28	14:58	15:28	15:42	16:03	----
COLNE,The Golden Ball (o/s)	11:34	12:04	12:34	13:04	13:34	14:04	14:34	15:04	15:34	15:48	16:10	----
<b>COLNE,Bus Station (Stand 4)</b>	11:41	12:11	12:41	13:11	13:41	14:11	14:41	15:11	15:41	15:55	16:18	----

Operator BPT BPT BPT BPT BPT BPT BPT BPT BPT BPT BPT BPT BPT

Notes CRGS NCRGS CRGS

Variations W NW

<b>CLITHEROE TOWN CENTRE,Interchange (Stand 6)</b>	15:09	15:40	----	----	----	16:02	16:45	17:19	17:52	18:22	18:52	20:07
CLITHEROE TOWN CENTRE,Well Terrace (Stand B)	15:11	15:42	----	----	----	16:04	16:47	17:21	17:53	18:23	18:53	20:08
CHATBURN ROAD,Grammar School (o/s)	----	----	----	----	15:55	----	----	----	----	----	----	----
WHALLEY,Bus Station (Stand C)	15:24	15:55	----	----	16:10	16:17	17:00	17:33	18:05	18:35	19:05	20:20

ALTHAM,Simon Jersey (by)	----	----	----	----	----	----	----	----	----	----	----	----
ALTHAM,Simonstone Lane (by)	----	----	----	----	----	----	----	----	----	----	----	----
PADIHAM,Slade Lane (adj)	15:40	16:11	----	----	16:26	16:33	17:16	17:49	18:20	18:50	19:20	20:35
PADIHAM,Bridge Inn (opp)	15:44	16:15	----	----	16:30	16:37	17:20	17:53	18:24	18:54	19:24	20:39
PADIHAM ROAD,Tim Bobbin (by)	15:54	16:24	----	----	16:40	16:46	17:29	18:01	18:30	19:00	19:30	20:45
BURNLEY,Bus Station (Stand 2)	16:05	16:35	16:55	16:55	16:50	16:57	17:40	18:10	18:38	19:08	19:38	20:53
BURNLEY,Bus Station (Stand 2)	16:10	16:40	----	----	16:55	17:02	17:45	18:15	18:43	19:13	19:43	----
QUEENSGATE,Queensgate Depot (by)	16:19	16:50	17:05	17:05	17:05	17:12	17:55	18:22	18:50	19:20	19:50	----
BRIERFIELD,Town Hall (opp)	16:24	16:56	17:11	17:11	17:11	17:18	18:01	18:26	18:54	19:24	19:54	----
NELSON,Bus Station (Stand 7)	16:31	17:04	17:19	17:19	17:19	17:26	18:09	18:31	18:59	19:29	19:59	----
NELSON,Bus Station (Stand 7)	16:33	17:06	17:21	17:21	17:21	17:28	18:11	18:33	19:01	19:31	20:01	----
COLNE,The Golden Ball (o/s)	16:40	17:14	17:29	17:29	17:29	17:36	18:19	18:38	19:06	19:36	20:06	----
<b>COLNE,Bus Station (Stand 4)</b>	16:48	17:24	17:39	17:39	17:39	17:46	18:29	18:45	19:13	19:43	20:13	----

*Operator* BPT BPT

*Notes*

*Variations*

<b>CLITHEROE TOWN CENTRE,Interchange (Stand 6)</b>	----	22:07
CLITHEROE TOWN CENTRE,Well Terrace (Stand B)	----	22:08
CHATBURN ROAD,Grammar School (o/s)	----	----
WHALLEY,Bus Station (Stand C)	----	22:20
ALTHAM,Simon Jersey (by)	----	----
ALTHAM,Simonstone Lane (by)	----	----
PADIHAM,Slade Lane (adj)	----	22:35
PADIHAM,Bridge Inn (opp)	----	22:39
PADIHAM ROAD,Tim Bobbin (by)	----	22:45
BURNLEY,Bus Station (Stand 2)	21:28	22:53
BURNLEY,Bus Station (Stand 2)	----	22:58
QUEENSGATE,Queensgate Depot (by)	21:35	23:05
BRIERFIELD,Town Hall (opp)	21:39	23:09
NELSON,Bus Station (Stand 7)	21:44	23:14
NELSON,Bus Station (Stand 7)	21:46	23:16
COLNE,The Golden Ball (o/s)	21:51	23:21
<b>COLNE,Bus Station (Stand 4)</b>	21:58	23:28

## Saturday

*Operator* BPT BPT BPT BPT BPT BPT BPT BPT BPT BPT BPT BPT BPT

*Notes*

<b>CLITHEROE TOWN CENTRE,Interchange (Stand 6)</b>	----	----	07:33	08:03	08:38	09:08	09:38	10:08	10:38	11:08	11:38	12:08
CLITHEROE TOWN CENTRE,Well Terrace (Stand B)	----	----	07:35	08:05	08:40	09:10	09:40	10:10	10:40	11:10	11:40	12:10
WHALLEY,Bus Station (Stand C)	----	----	07:48	08:18	08:53	09:23	09:53	10:23	10:53	11:23	11:53	12:23
PADIHAM,Slade Lane (adj)	07:08	07:38	08:04	08:34	09:09	09:39	10:09	10:39	11:09	11:39	12:09	12:39
PADIHAM,Bridge Inn (opp)	07:12	07:42	08:08	08:38	09:13	09:43	10:13	10:43	11:13	11:43	12:13	12:43
PADIHAM ROAD,Tim Bobbin (by)	07:20	07:50	08:16	08:46	09:21	09:51	10:21	10:51	11:21	11:51	12:21	12:51
BURNLEY,Bus Station (Stand 2)	07:29	07:59	08:25	08:55	09:30	10:00	10:30	11:00	11:30	12:00	12:30	13:00
BURNLEY,Bus Station (Stand 2)	07:34	08:04	08:30	09:00	09:35	10:05	10:35	11:05	11:35	12:05	12:35	13:05
QUEENSGATE,Queensgate Depot (by)	07:43	08:13	08:39	09:09	09:44	10:14	10:44	11:14	11:44	12:14	12:44	13:14

BRIERFIELD,Town Hall (opp)	07:48	08:18	08:44	09:14	09:49	10:19	10:49	11:19	11:49	12:19	12:49	13:19
NELSON,Bus Station (Stand 7)	07:55	08:25	08:51	09:21	09:56	10:26	10:56	11:26	11:56	12:26	12:56	13:26
NELSON,Bus Station (Stand 7)	07:57	08:27	08:53	09:23	09:58	10:28	10:58	11:28	11:58	12:28	12:58	13:28
COLNE,The Golden Ball (o/s)	08:03	08:33	08:59	09:29	10:04	10:34	11:04	11:34	12:04	12:34	13:04	13:34
<b>COLNE,Bus Station (Stand 4)</b>	08:10	08:40	09:06	09:36	10:11	10:41	11:11	11:41	12:11	12:41	13:11	13:41

*Operator* BPT BPT BPT BPT BPT BPT BPT BPT BPT BPT BPT BPT

*Notes*

<b>CLITHEROE TOWN CENTRE,Interchange (Stand 6)</b>	12:38	13:08	13:38	14:08	14:38	15:08	15:38	16:08	16:45	17:19	17:52	18:22
CLITHEROE TOWN CENTRE,Well Terrace (Stand B)	12:40	13:10	13:40	14:10	14:40	15:10	15:40	16:10	16:47	17:21	17:53	18:23
WHALLEY,Bus Station (Stand C)	12:53	13:23	13:53	14:23	14:53	15:23	15:53	16:23	17:00	17:33	18:05	18:35
PADIHAM,Slade Lane (adj)	13:09	13:39	14:09	14:39	15:09	15:39	16:09	16:39	17:16	17:49	18:20	18:50
PADIHAM,Bridge Inn (opp)	13:13	13:43	14:13	14:43	15:13	15:43	16:13	16:43	17:20	17:53	18:24	18:54
PADIHAM ROAD,Tim Bobbin (by)	13:21	13:51	14:21	14:51	15:21	15:51	16:21	16:51	17:28	18:01	18:30	19:00
BURNLEY,Bus Station (Stand 2)	13:30	14:00	14:30	15:00	15:30	16:00	16:30	17:00	17:37	18:10	18:38	19:08
BURNLEY,Bus Station (Stand 2)	13:35	14:05	14:35	15:05	15:35	16:05	16:35	17:05	17:42	18:15	18:43	19:13
QUEENSGATE,Queensgate Depot (by)	13:44	14:14	14:44	15:14	15:44	16:14	16:44	17:14	17:51	18:22	18:50	19:20
BRIERFIELD,Town Hall (opp)	13:49	14:19	14:49	15:19	15:49	16:19	16:49	17:19	17:56	18:26	18:54	19:24
NELSON,Bus Station (Stand 7)	13:56	14:26	14:56	15:26	15:56	16:26	16:56	17:26	18:03	18:31	18:59	19:29
NELSON,Bus Station (Stand 7)	13:58	14:28	14:58	15:28	15:58	16:28	16:58	17:28	18:05	18:33	19:01	19:31
COLNE,The Golden Ball (o/s)	14:04	14:34	15:04	15:34	16:04	16:34	17:04	17:34	18:11	18:38	19:06	19:36
<b>COLNE,Bus Station (Stand 4)</b>	14:11	14:41	15:11	15:41	16:11	16:41	17:11	17:41	18:18	18:45	19:13	19:43

*Operator* BPT BPT BPT BPT

*Notes*

<b>CLITHEROE TOWN CENTRE,Interchange (Stand 6)</b>	18:52	20:07	----	22:07
CLITHEROE TOWN CENTRE,Well Terrace (Stand B)	18:53	20:08	----	22:08
WHALLEY,Bus Station (Stand C)	19:05	20:20	----	22:20
PADIHAM,Slade Lane (adj)	19:20	20:35	----	22:35
PADIHAM,Bridge Inn (opp)	19:24	20:39	----	22:39
PADIHAM ROAD,Tim Bobbin (by)	19:30	20:45	----	22:45
BURNLEY,Bus Station (Stand 2)	19:38	20:53	21:28	22:53
BURNLEY,Bus Station (Stand 2)	19:43	----	----	22:58
QUEENSGATE,Queensgate Depot (by)	19:50	----	21:35	23:05
BRIERFIELD,Town Hall (opp)	19:54	----	21:39	23:09
NELSON,Bus Station (Stand 7)	19:59	----	21:44	23:14
NELSON,Bus Station (Stand 7)	20:01	----	21:46	23:16
COLNE,The Golden Ball (o/s)	20:06	----	21:51	23:21
<b>COLNE,Bus Station (Stand 4)</b>	20:13	----	21:58	23:28

## Sunday

*Operator* BPT BPT BPT BPT BPT BPT BPT BPT BPT BPT BPT BPT

*Notes*

<b>CLITHEROE TOWN CENTRE,Interchange (Stand 6)</b>	----	----	----	----	----	----	----	10:04	----	11:04	----
CLITHEROE TOWN CENTRE,Well Terrace (Stand B)	----	----	----	----	----	----	----	10:06	----	11:06	----
WHALLEY,Bus Station (Stand C)	----	----	----	----	----	09:20	----	10:18	----	11:18	----

PADIHAM,Slade Lane (adj)	----	----	08:35	----	----	----	09:35	----	10:33	----	11:33	----
PADIHAM,Bridge Inn (opp)	----	----	08:39	----	----	----	09:39	----	10:37	----	11:37	----
PADIHAM ROAD,Tim Bobbin (by)	----	----	08:45	----	----	----	09:45	----	10:44	----	11:44	----
BURNLEY,Bus Station (Stand 2)	07:28	07:48	08:53	09:13	09:28	09:43	09:53	10:28	10:53	11:28	11:53	12:28
BURNLEY,Bus Station (Stand 2)	----	----	----	----	----	----	----	----	----	----	----	----
QUEENSGATE,Queensgate Depot (by)	07:35	07:55	----	09:20	09:35	09:50	----	10:36	----	11:36	----	12:36
BRIERFIELD,Town Hall (opp)	07:39	07:59	----	09:24	09:39	09:54	----	10:40	----	11:40	----	12:40
NELSON,Bus Station (Stand 7)	07:44	08:04	----	09:29	09:44	09:59	----	10:47	----	11:47	----	12:47
NELSON,Bus Station (Stand 7)	07:46	08:06	----	09:31	09:46	10:01	----	10:49	----	11:49	----	12:49
COLNE,The Golden Ball (o/s)	07:51	08:11	----	09:36	09:51	10:06	----	10:54	----	11:54	----	12:54
<b>COLNE,Bus Station (Stand 4)</b>	07:58	08:18	----	09:43	09:58	10:13	----	11:01	----	12:01	----	13:01

*Operator* BPT BPT BPT BPT BPT BPT BPT BPT BPT BPT BPT BPT

*Notes*

<b>CLITHEROE TOWN CENTRE,Interchange (Stand 6)</b>	12:04	----	13:04	----	14:04	----	15:04	----	16:04	----	17:07	----
CLITHEROE TOWN CENTRE,Well Terrace (Stand B)	12:06	----	13:06	----	14:06	----	15:06	----	16:06	----	17:08	----
WHALLEY,Bus Station (Stand C)	12:18	----	13:18	----	14:18	----	15:18	----	16:18	----	17:20	----
PADIHAM,Slade Lane (adj)	12:33	----	13:33	----	14:33	----	15:33	----	16:33	----	17:35	----
PADIHAM,Bridge Inn (opp)	12:37	----	13:37	----	14:37	----	15:37	----	16:37	----	17:39	----
PADIHAM ROAD,Tim Bobbin (by)	12:44	----	13:44	----	14:44	----	15:44	----	16:44	----	17:45	----
BURNLEY,Bus Station (Stand 2)	12:53	13:28	13:53	14:28	14:53	15:28	15:53	16:28	16:53	17:28	17:53	18:28
BURNLEY,Bus Station (Stand 2)	----	----	----	----	----	----	----	----	----	----	----	----
QUEENSGATE,Queensgate Depot (by)	----	13:36	----	14:36	----	15:36	----	16:36	----	17:35	----	18:35
BRIERFIELD,Town Hall (opp)	----	13:40	----	14:40	----	15:40	----	16:40	----	17:39	----	18:39
NELSON,Bus Station (Stand 7)	----	13:47	----	14:47	----	15:47	----	16:47	----	17:44	----	18:44
NELSON,Bus Station (Stand 7)	----	13:49	----	14:49	----	15:49	----	16:49	----	17:46	----	18:46
COLNE,The Golden Ball (o/s)	----	13:54	----	14:54	----	15:54	----	16:54	----	17:51	----	18:51
<b>COLNE,Bus Station (Stand 4)</b>	----	14:01	----	15:01	----	16:01	----	17:01	----	17:58	----	18:58

*Operator* BPT BPT BPT BPT BPT BPT BPT BPT

*Notes*

<b>CLITHEROE TOWN CENTRE,Interchange (Stand 6)</b>	18:07	----	19:07	----	20:07	----	----	----	----	----	----	----
CLITHEROE TOWN CENTRE,Well Terrace (Stand B)	18:08	----	19:08	----	20:08	----	----	----	----	----	----	----
WHALLEY,Bus Station (Stand C)	18:20	----	19:20	----	20:20	----	----	----	----	----	----	----
PADIHAM,Slade Lane (adj)	18:35	----	19:35	----	20:35	21:35	22:05	22:35	----	----	----	----
PADIHAM,Bridge Inn (opp)	18:39	----	19:39	----	20:39	21:39	22:09	22:39	----	----	----	----
PADIHAM ROAD,Tim Bobbin (by)	18:45	----	19:45	----	20:45	21:45	22:15	22:45	----	----	----	----
BURNLEY,Bus Station (Stand 2)	18:53	19:28	19:53	20:28	20:53	21:53	22:23	22:53	----	----	----	----
BURNLEY,Bus Station (Stand 2)	----	----	----	----	----	21:58	22:28	22:58	----	----	----	----
QUEENSGATE,Queensgate Depot (by)	----	19:35	----	20:35	----	22:05	22:35	23:05	----	----	----	----
BRIERFIELD,Town Hall (opp)	----	19:39	----	20:39	----	22:09	22:39	23:09	----	----	----	----
NELSON,Bus Station (Stand 7)	----	19:44	----	20:44	----	22:14	22:44	23:14	----	----	----	----
NELSON,Bus Station (Stand 7)	----	19:46	----	20:46	----	22:16	22:46	23:16	----	----	----	----
COLNE,The Golden Ball (o/s)	----	19:51	----	20:51	----	22:21	22:51	23:21	----	----	----	----
<b>COLNE,Bus Station (Stand 4)</b>	----	19:58	----	20:58	----	22:28	22:58	23:28	----	----	----	----

**Key**

- NCRGS - Not Clitheroe Grammar School
- CRGS - Clitheroe Grammar School only
- BPT - Transdev Burnley & Pendle

# APPENDIX B – Example Travel Survey Questionnaire

**Q11. Which of the following changes would most encourage you to walk for journeys in the local area?**

*(if you already walk, which would you most like to see?)*

- |   |   |
|---|---|
| <input type="checkbox"/> Cleaner, better maintained footways  | <input type="checkbox"/> Better street lighting in the local area |
| <input type="checkbox"/> Better lighting on footways  | <input type="checkbox"/> Walking buddies                          |
| <input type="checkbox"/> More improved pedestrian crossing facilities                                   | <input type="checkbox"/> None of the above                        |
| <input type="checkbox"/> Higher presence of security within and around the Cromwell Heights development | <input type="checkbox"/> Other (please specify)                   |
| <input type="checkbox"/> Slower speed limits  | .....   |

**Q12. Which of the following changes would most encourage you to car share?**

*(if you already car share, which would you most like to see?)*

- |   |  |
|---|--|
| <input type="checkbox"/> More help finding car share partners who have similar travel/work patterns | <input type="checkbox"/> More information regarding car sharing (i.e. benefits and cost savings) |
| <input type="checkbox"/> Reserved car parking spaces at place of work etc.                          | <input type="checkbox"/> None of the above   |
| <input type="checkbox"/> Free taxi home if let down by fellow car sharer/emergency                  | <input type="checkbox"/> Other (please specify)  |
| .....   | .....  |

**Q13. Were you aware that Cromwell Heights operated a Travel Plan?**

- Yes       No

**Q14. If yes, how did you hear about the Travel Plan?**

- |   |   |
|---|---|
| <input type="checkbox"/> During the marketing/sales process                       | <input type="checkbox"/> Personalised travel planning process |
| <input type="checkbox"/> Word of mouth  | <input type="checkbox"/> Other (please specify)               |
| <input type="checkbox"/> Development publication/ newsletter/notice board/website |   |

**Q15. Would you like to receive more information/updates regarding the Travel Plan**

- Yes       No

Please use the following box to provide any additional comments you wish to make in relation to transport/travel within the local area:

.....

.....

.....

.....

.....



# CROMWELL HEIGHTS TRAVEL SURVEY



As part of the monitoring process for the Residential Travel Plan, we are currently conducting an initial Travel Survey. We would be grateful if one member of your household could complete this survey to help us better understand your travel patterns, needs and how we may be able to further assist your travel requirements.

The survey will take approximately 5 minutes to complete and all responses will be treated confidentially.

## WHAT IS A TRAVEL PLAN?

The principle objective of a Travel Plan is to reduce the amount of single occupancy car travel to and from a residential development site and subsequently promote and encourage more sustainable travel choices (i.e. walk, cycle & public transport).

The key benefits of a successfully implemented and well-managed Travel Plan may include:

- Reduction of traffic, congestion, air pollution and accidents; and
- Promotion and uptake of alternative sustainable travel options resulting in significant health benefits for participating residents.

## UPON COMPLETION...

Once you have completed the survey please return it using the pre-paid envelope provided within the pack.

If you have any queries regarding the survey, or require any help and advice on how to complete it, please do not hesitate to contact us using the details provided below:

**Travel Plan Co-Ordinator:**

**mode transport planning**

- ☎ 0161 974 3208
- ✉ info@modetransport.co.uk



# SECTION A:

## ABOUT YOU AND YOUR HOME

Q1. What is your gender?

- Female  
 Male

Q2. Which age range do you fall into:

- 16-25     26-35     36-45     46-55  
 56-65     65+

Q3. What is your postcode?

Q4. How many people live at your property?

Q5. Do you or any member of your household own a car?

- Yes     No     If yes, how many in total?

# SECTION B:

## ABOUT YOUR TRAVEL PATTERNS TO AND FROM YOUR HOME

Q6. How do you most frequently travel to and from your home for the following activities? (Choose the mode of travel that you use most often)

Reason for Travel	Walk	Cycle	Bus	Rail	Car (alone)	Car Share (driver/passenger)	Other (please specify)
Work	<input type="checkbox"/>	<input type="checkbox"/>	<input type="checkbox"/>	<input type="checkbox"/>	<input type="checkbox"/>	<input type="checkbox"/>	.....
Shopping	<input type="checkbox"/>	<input type="checkbox"/>	<input type="checkbox"/>	<input type="checkbox"/>	<input type="checkbox"/>	<input type="checkbox"/>	.....
Education	<input type="checkbox"/>	<input type="checkbox"/>	<input type="checkbox"/>	<input type="checkbox"/>	<input type="checkbox"/>	<input type="checkbox"/>	.....

Q7. How often do you use the following modes of travel for journeys from your home? (Tick all modes that you ever use, for all or part of a journey, choosing the frequency with which you use them)

Modes for Travel	Very Often (7 or more in every 10 trips)	Quite Often (between 3&6 out of every 10 trips)	Occasionally (less than 2 out of every 10 trips)	Never
Walk	<input type="checkbox"/>	<input type="checkbox"/>	<input type="checkbox"/>	<input type="checkbox"/>
Cycle	<input type="checkbox"/>	<input type="checkbox"/>	<input type="checkbox"/>	<input type="checkbox"/>
Bus	<input type="checkbox"/>	<input type="checkbox"/>	<input type="checkbox"/>	<input type="checkbox"/>
Rail	<input type="checkbox"/>	<input type="checkbox"/>	<input type="checkbox"/>	<input type="checkbox"/>
Car (alone)	<input type="checkbox"/>	<input type="checkbox"/>	<input type="checkbox"/>	<input type="checkbox"/>

## Section B Continued:

Modes for Travel	Very Often (7 or more in every 10 trips)	Quite Often (between 3&6 out of every 10 trips)	Occasionally (less than 2 out of every 10 trips)	Never
Car Share (driver/passenger)	<input type="checkbox"/>	<input type="checkbox"/>	<input type="checkbox"/>	<input type="checkbox"/>
Motorcycle/Scooter	<input type="checkbox"/>	<input type="checkbox"/>	<input type="checkbox"/>	<input type="checkbox"/>
Other	<input type="checkbox"/>	<input type="checkbox"/>	<input type="checkbox"/>	<input type="checkbox"/>

# SECTION C:

## ABOUT YOUR FUTURE JOURNEYS

Q8. Have you changed your most common mode of transport since relocating to Cromwell Heights?

- Yes     No     If yes, what was the main reason for this change?

Q9. Which of the following changes would most encourage you to cycle for journeys in the local area? (If you already cycle, which would you most like to see?)

- Safer, better lit cycle paths     Improve cycle parking at local facilities/at work – if so where?  
 Provision of cycle paths/lanes on the journey into Longridge Town Centre     Cycle training (i.e. bikeability)  
 Improved signage     Cycle buddies  
 Improve/provide cycle parking within Cromwell Heights     None of the above  
 Arrangements to purchase a bicycle at discounted rates/loans     Other (please specify).....  
 Improved cycle crossing facilities .....

Q10. Which of the following changes would most encourage you to use public transport for your journeys in the local area? (if you already travel by public transport, which would you most like to see)

- More direct bus routes on route to work     Public transport information (real-time)  
 More frequent bus services on route to work     Subsidised/discounted tickets  
 More frequent train services     None of the above  
 Better lighting at bus stops/shelters and on footways .....

# APPENDIX C – Example Resident's Travel Information Pack

The background of the page features a series of dark blue silhouettes against a light blue gradient. On the left, a tree's branches are visible. In the center, a family is depicted: a man on the right is flying a kite, a woman is riding a bicycle, and a child is riding a tricycle. In the foreground, two children are running. To the right, a dog is walking. In the background, a bus stop shelter is visible with several people waiting. A small butterfly silhouette is positioned to the right of the text 'TRAVEL OPTIONS'.

mode

transport planning

# WELCOME TO YOUR NEW DAVID WILSON HOME

CROMWELL HEIGHTS | TRAVEL OPTIONS

mode transport working on behalf of



DAVID WILSON HOMES

WHERE QUALITY LIVES

# 1 2 3 4 5 6

## CONTENTS

### PUBLIC TRANSPORT

Bus Services

### WALKING AND CYCLING

Walking

Cycling

### LOCAL AMENITIES/FACILITIES

Education

GP Surgeries/Healthcare

### TRAVEL OPTIONS MAP

Cycle Routes

Local Amenities/Facilities Locations

### FURTHER INFORMATION

Car Sharing

Live Traffic Information

Local Taxi Firms

### USEFUL CONTACTS

Travel Plan Co-Ordinator

Useful Contacts



DAVID WILSON HOMES

WHERE QUALITY LIVES

# CONSIDER YOUR TRAVEL OPTIONS

As you and your family settle into your new home within Cromwell Heights, David Wilson Homes North West would like to help make the transition as straightforward as possible.

The best time to reconsider your travel options is when you move house, therefore if you are looking to save money, improve your health through increased exercise or simply cut your carbon emissions, David Wilson Homes is here to help.

This Travel Options leaflet is designed to assist you as you travel in, out and around Longridge, Preston, Blackburn and the surrounding local area. Its purpose is to provide you and your family with information on the travel options that are available to you.

A Travel Co-ordinator has been appointed for the site and they are the point of call for any of your travel queries; their contact details are included within this Travel Options leaflet. They will be happy to provide you with further information for your specific travel needs.

This leaflet also contains links to bus maps for local bus services, walking and cycling maps of the local area and further travel information to facilitate more sustainable transport options.



THIS TRAVEL OPTIONS LEAFLET IS DESIGNED TO ASSIST YOU AS YOU TRAVEL IN, OUT AND AROUND LONGRIDGE, PRESTON, BLACKBURN AND THE SURROUNDING LOCAL AREA



# 1 PUBLIC TRANSPORT



“ “  
DESTINATIONS FROM THESE STOPS  
INCLUDE CHIPPING, RIBCHESTER,  
SALESBURY, WILPSHIRE, BLACKBURN,  
PRESTON, GRIMSARGH AND RIBBLETON  
” ”

## BUS SERVICES

The local area is currently served by the no. 4 route, which operates along Whittingham Road north of Cromwell Heights connecting Longridge with Preston via Goosnargh, Broughton and Woodplumpton. There is an hourly service throughout the day between 0719 – 1732, Monday to Friday and between 0740 – 1815, Saturdays. The buses are run by Stagecoach:  
[www.stagecoachbus.com](http://www.stagecoachbus.com)

## WHERE TO CATCH THE BUS..

The nearest bus stops are located within a 5 minute walk from your home on Whittingham Road as shown on the local area map.

Additional services are available from Derby Road in Longridge to the north east of the site. Destinations from these stops include Chipping, Ribchester, Salisbury, Wilpshire, Blackburn, Preston, Grimsargh and Ribbleton.

Further information on the destinations, routes and frequencies for all buses serving the local area can be found via the web-links in “Further Information”.

# 2 WALKING & CYCLING

If you are looking to improve your health through more active travel options, reduce your carbon footprint or simply enjoy leisure and recreational routes close to your new home, the local walking and cycling networks provide good quality options for you and your family.

“ THERE ARE CONTINUOUS PEDESTRIAN LINKS BETWEEN CROMWELL HEIGHTS AND THE CENTRE OF LONGRIDGE ”

## WALKING

There are high quality walking routes within the development, which link into the main footways and road network on Whittingham Road. There are also Public Rights of Way to the east and south of Cromwell Heights for your leisure purposes.

There are continuous pedestrian links between Cromwell Heights and the centre of Longridge on the northern side of Whittingham Road.

To the west, the footway provides a connection to the bus stops at Halfpenny Lane.

Beacon Fell Country Park lies approximately 6.5km to the northwest of the site and has many footpaths throughout. The park lies within the forest of Bowland AONB.

The site is also located within the Ribble Valley which provides numerous opportunities for walking.

## CYCLING

The site is located 1.8km from National Cycle Route 6 connecting Preston with Lancaster and 1.2km from Regional Route 90, a leisure route which passes through Longridge and the Forest of Bowland AONB. The local roads surrounding the development are suitable for the majority of cyclists; some of the major roads are suited to more proficient and confident cyclists.

Walking and cycling routes within the vicinity of Cromwell Heights can be seen on the plan overleaf and further useful information on walking/cycling in the area can be found via the web-links in "Further Information".

# 3 LOCAL AMENITIES & FACILITIES

Cromwell Heights is well located within a range of amenities. The town of Longridge includes several pubs and restaurants, a cinema, a library, food takeaways, hairdressers, petrol station and convenience stores. There is also a sports centre and local football club. Longridge Golf Course is also located approximately 3km to the northeast of Longridge.



THERE IS A COMMUNITY HOSPITAL, GP SURGERIES AND DENTAL PRACTICES, AS WELL AS PHARMACIES LOCATED WITHIN LONGRIDGE



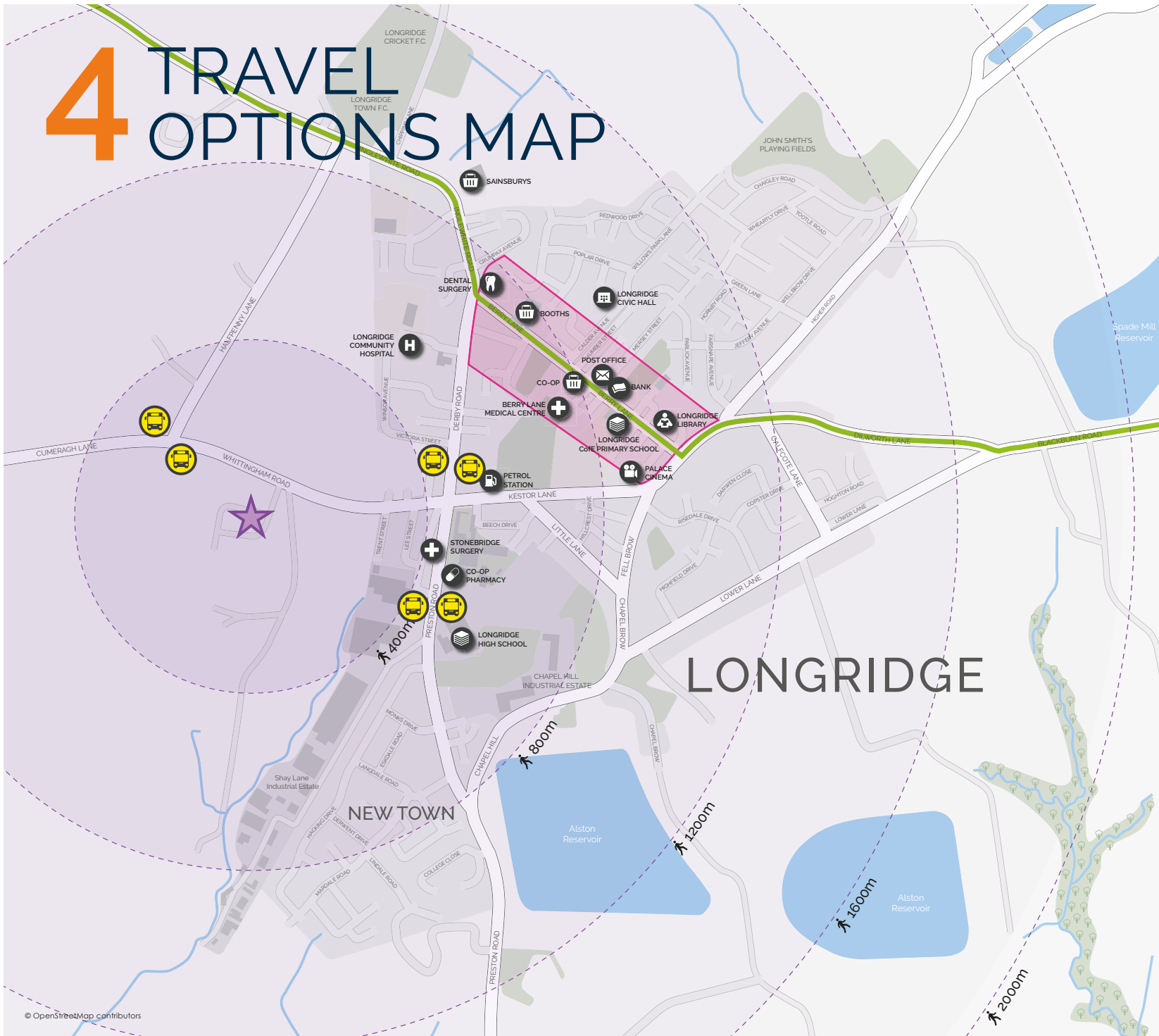
## EDUCATION

There are primary and high schools located within Longridge. In Preston and Blackburn there are several further education colleges. Preston is also home to the University of Central Lancashire and the University Centre at Blackburn College provides higher education opportunities.

## GP SURGERIES/ HEALTHCARE

There is a community hospital, GP surgeries and dental practices, as well as pharmacies located within Longridge as shown on the local amenities plan. More information on your local healthcare facilities can be found via the web-links in "Further Information".

# 4 TRAVEL OPTIONS MAP



- Cromwell Heights
- Longridge Town Centre
- Walking Catchment Area
- Nearest bus Stops
- Regional Cycle Route 90
- Bank
- Cinema
- Civic Centre
- Dental Surgery
- Hospital
- Library
- Medical Centre
- Petrol Station
- Pharmacy
- Post Office
- School
- Shopping

# 5 FURTHER INFORMATION

## CAR SHARING

Sometimes public transport and other sustainable modes of travel are not viable as a travel option; whether it is due to childcare commitments, the travel distance to your destination or the lack of public transport options for your journey. Before opting for your car (as a single occupancy driver), why not consider the possibility of car sharing?

Whether you share with your partner, neighbour, a colleague or via a national or local car share matching website ([www.liftshare.com/uk](http://www.liftshare.com/uk), [www.share-a-lift.co.uk](http://www.share-a-lift.co.uk)); car sharing can often provide a more direct and flexible option than public transport, as well as enabling you to reduce the costs of travelling and cut your carbon emissions.

Lancashire also have a free car sharing service called Shared Wheels available to anyone who lives in and around Lancashire.

[sharedwheels.liftshare.com](http://sharedwheels.liftshare.com)

## LIVE TRAFFIC INFORMATION

### Highways England (HE)

[www.highways.gov.uk/traffic-information](http://www.highways.gov.uk/traffic-information)

## LOCAL TAXI FIRMS

### Longridge Taxi Service

01772 782747

### Irelands Taxis

01772 785534

### Ribble Valley Private Hire

01772 786 606

### 2b Private Hire

01772 780688



BEFORE OPTING FOR YOUR CAR (AS A SINGLE OCCUPANCY DRIVER), WHY NOT CONSIDER THE POSSIBILITY OF CAR SHARING?




# 6 USEFUL CONTACTS

## TRAVEL PLAN CO-ORDINATOR

The contact details of the Travel Plan Co-Ordinator (TPC) for Cromwell Heights is detailed below. They are here to help with your sustainable travel options, providing you with further information for your specific travel needs.

If you have any problems or would like to report any travel related issues within the development, please contact the TPC, who will aim to address issues or refer them to David Wilson Homes North West, the Council or Local Highway Authority.

### Your TPC is:

 mode transport planning  
Jactin House  
24 Hood Street  
Manchester  
M4 6WX

 0161 974 3208

 manchester@modetransport.co.uk

## USEFUL CONTACTS:

Public Transport Information:  
timetables, maps, ticket prices

### Stagecoach Bus Company

[www.stagecoachbus.com/timetables](http://www.stagecoachbus.com/timetables)

### Pilkington Bus

[www.pilkingtonbus.com](http://www.pilkingtonbus.com)

### Preston Bus

[www.prestonbus.co.uk](http://www.prestonbus.co.uk)

### Redline Travel

[www.redlinetravel.co.uk](http://www.redlinetravel.co.uk)

### Lancashire CC

[www.lancashire.gov.uk/roads-parking-and-travel/public-transport/bus-timetables](http://www.lancashire.gov.uk/roads-parking-and-travel/public-transport/bus-timetables)

Walking and Cycling:  
maps, strategy, safety

### Lancashire CC

[www.lancashire.gov.uk/leisure-and-culture/walking](http://www.lancashire.gov.uk/leisure-and-culture/walking);  
[www.lancashire.gov.uk/leisure-and-culture/cycling](http://www.lancashire.gov.uk/leisure-and-culture/cycling);  
[www.lancashire.gov.uk/leisure-and-culture/cycling/cycle-routes](http://www.lancashire.gov.uk/leisure-and-culture/cycling/cycle-routes)

### Sustrans:

[www.sustrans.org.uk/ncn/map](http://www.sustrans.org.uk/ncn/map)

### Ribble Valley Visitor Site

[www.visitribblevalley.co.uk](http://www.visitribblevalley.co.uk)

### Walkit

[www.walkit.com/cities/blackburn-with-darwen/](http://www.walkit.com/cities/blackburn-with-darwen/)

### Health Care

GP surgeries, dentists, local hospitals

### National Health Service (NHS)

[www.nhs.uk](http://www.nhs.uk)

### Public Rights of Way map

[www.lancashire.gov.uk/roads-parking-and-travel/public-rights-of-way/public-rights-of-way-map.aspx](http://www.lancashire.gov.uk/roads-parking-and-travel/public-rights-of-way/public-rights-of-way-map.aspx)



DAVID WILSON HOMES

WHERE QUALITY LIVES

mode

transport planning

Manchester  
Jactin House  
24 Hood Street  
Manchester M4 6WX

 0161 974 3208

 [manchester@modetransport.co.uk](mailto:manchester@modetransport.co.uk)

Birmingham

☎ 0121 794 8390

London

☎ 020 7293 0217

Manchester

☎ 0161 974 3208

Oxford

☎ 01865 389 440

Reading

☎ 0118 206 2945

✉ [info@modetransport.co.uk](mailto:info@modetransport.co.uk)

📍 [modetransport.co.uk](http://modetransport.co.uk)

🐦 [@mode\\_transport](https://twitter.com/mode_transport)