



Old Infirmary Boarding

Heritage Statement | January 2018

Job name
Old Infirmary Boarding

Job number
3477A

Date of issue
30.01.19

Revision
Listed Building Consent

Author
JP

Checked by
VT

File path
J:\3477A\Graphics\Layouts

Contents

1.0 Executive summary	3
2.0 Site Context	5
2.1 - Site description	6
2.2 - Site ownership	7
2.3 - Site description	8
2.4 - Development context	9
2.5 - Old Infirmary site history	9
2.6 - Heritage context	10
2.7 - Conservation Management Plan (CMP)	11
2.8 - Heritage significance	11
2.9 - Existing uses	12
3.0 Heritage Assessment	15
3.1 - Heritage policies	16
3.2 - Assessment methodology	16
3.3 - Overview of the works	17
3.4 - Alternatives considered	17
3.5 - Scope of work	17
3.6 - Stakeholder consultation	18
3.7 - Impact assessment	18
3.8 - Significance assessment	20
4.0 Appendix	23
4.1 - A. Official listing	24
4.2 - B. Historic photos	27

Executive summary

This heritage statement accompanies an application for listed building consent to allow for the refurbishment of the Old Infirmary at Stonyhurst College into a boarding house for 23 single / twin study bedrooms.

Listed building consent application

In order to satisfy the requirements of planning policy and Ribble Valley Borough Council, the application consists of the following:

- Application form and certificates
- Location plan
- Existing plans, sections and elevations
- Proposed plans
- Photographic record
- Site context (within this report)
- Written justification (within this report)

Purpose of the report

Levitt Bernstein has been appointed by Stonyhurst College to prepare the LBC application for the interior refurbishment of the Old Infirmary building into a sixth form boarding house. This statement is in support of those proposals; explaining the historical and legislative context of the scheme, and justification of the refurbishment as a whole.

A brief overview

Located within the Stonyhurst estate on the West Front of the primary College buildings, the Old Infirmary and attached passage is Grade II listed and owned by Stonyhurst. Completed on the site of former coach house buildings in 1842-43, the listing identifies the buildings as 'good examples of mid-C19 Gothic revival work complimenting the West Front composition'. This application does not seek permission to alter the external fabric. Much of the external fabric and core structure of the building survives, although few historic features remain internally due to successive phases of remodelling (as noted in Part 2: Gazetteer of the CMP) and the remaining internal fabric is designated as medium significance in historical terms. The last remodelling was undertaken in 2006.



Parts of the building are in use, but many rooms have been vacant since the last remaining Jesuit priest moved elsewhere on the estate in September 2018. The remaining accommodation is used for Classics teaching and sixth form day boys study.

01. FRONT COVER: Historic photo of West elevation (c. 1885)
02. Aerial photo pre-dating the construction of Weld House

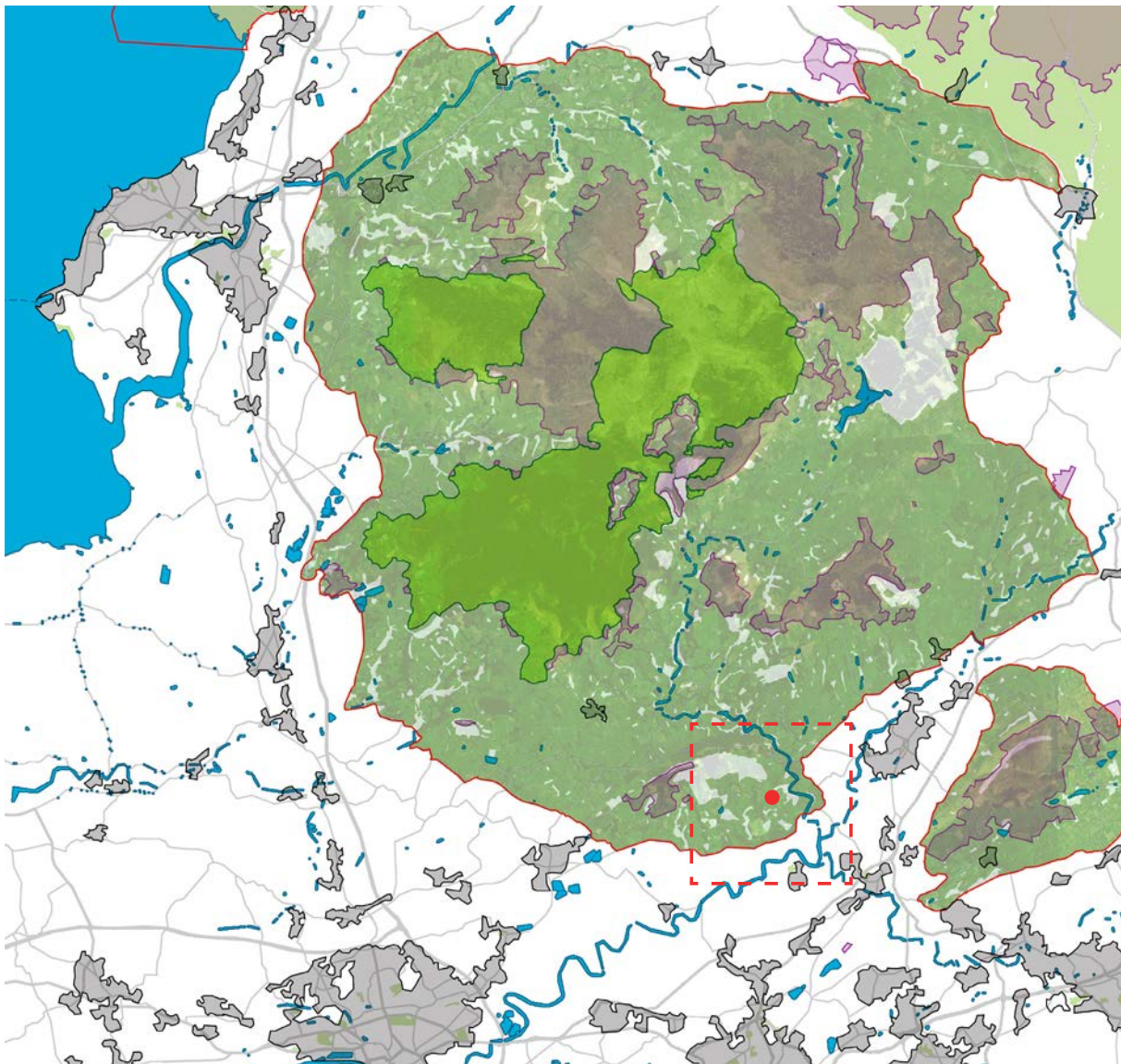
2.0 Site context

2.0 Site context

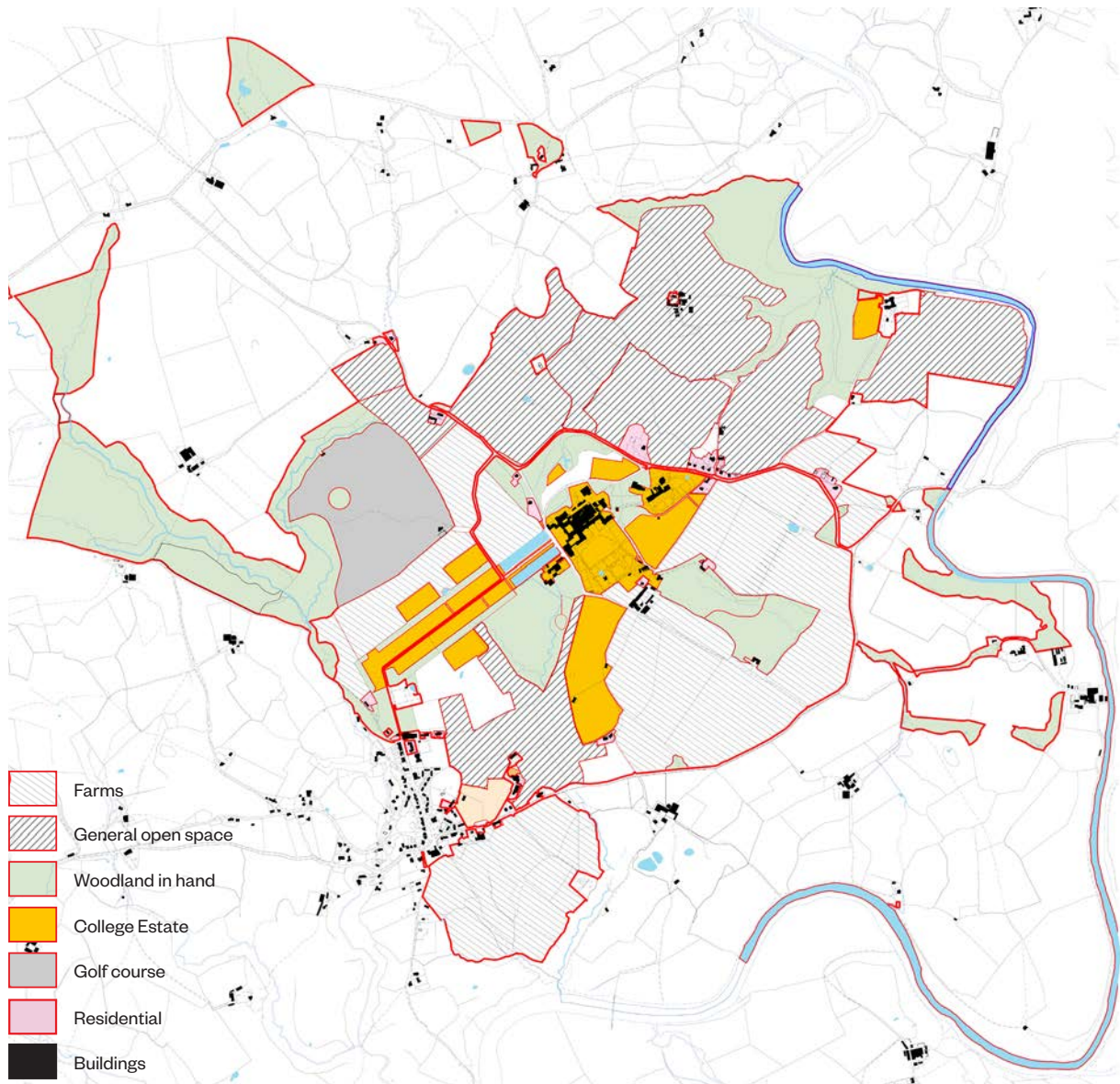
This section describes the history and development of the application site and serves as an introduction to the architectural and historic interest of the Old Infirmary.

2.1 The setting

The application site is located within the Stonyhurst Estate, situated in the Ribble Valley area of Lancashire, England and set within the Forest of Bowland Area of Outstanding Natural Beauty.



Regional context



Stonyhurst estate ownership

The Countryside Agency, English Nature, RDS, English Heritage, (updated 2006) place Stonyhurst College in Bowland Fringe and Pendle Hill national character area, whilst the Lancashire Landscape Classification places it within the Undulating Lowland Farm land character area, more specifically, the Undulating Lowland Farmland with Parkland classification area (Hurst Green).

Surrounded by a mixture of Open Moorland plateau to the north and valley farmlands, Stonyhurst College is located in the upland fringes and ridges

area. Located to the West, Hurst Green is a small village with a close historical relationship to the College. The population of approximately five hundred has grown from a small Hamlet, and it's historical expansion is closely linked to the establishment of Shireburn House and subsequently, the College.

2.2 Site ownership

Situated at the heart of the wider College Estate the former infirmary building, know as 'The Old Infirmary' forms part of the collection of main college buildings.

2.3 Site description

The Old Infirmary is built on the West Front of Stonyhurst College, on the site of a demolished coach house outbuilding. A public right of way runs parallel and adjacent to the West Facade. The former Infirmary is connected to the north range of the Front Quad by a single-storey covered passage.

The main part of the building consists of four levels, with two principle storeys at ground and first floor as visible in the image, right. The part-basement storey matches external levels to the West and North. The small attic level that consists of two rooms, is concealed within the pitch of the Welsh slate roof.



View looking West (Old Infirmary right of image)



Site location plan - not to scale



Painting by Turner. Image from 'Stonyhurst College' by T.E.Muir.

2.4 Historic development context

The buildings at Stonyhurst College have been formed over the past four centuries, starting with the creation of the Gatehouse by the Shireburn family in 1606. The origins of the estate itself date back to the 13th Century. The College moved to Stonyhurst in 1794. Extensive detail and explanation can be found within the 2015 Conservation Management Plan.

2.5 Old Infirmary site history

2.5.1 Pre-1842

Historic plans and views, such as Turner's 1799 watercolour (above) illustrate a barn on this site, aligned east-west. Subsequent to this, a former coach house existed on the site.

2.5.2 1842-3

The coach house was demolished, and the Conservation Management Plan notes that there is no evidence to suggest it was retained or adapted in any way. A new building was erected by the Jesuits for an infirmary, which been attributed to notable Catholic architect J.J.Scoles. The official listing notes that the buildings are 'good examples of mid C-19 Gothic revival work complementing the West Front composition developed by the Jesuits'. The

Conservation Management Plan attributes high significance to the exterior of buildings for their historic, aesthetic and communal values and as part of the composition of the West Front.

2.5.3 1996

The first of two later adaptations, the infirmary was relocated to the Shireburn Quad ground floor. The building was subsequently remodelled to provide girls' boarding accommodation. In context, Stonyhurst became fully co-educational in 1999. The scheme was designed by Geoffrey Lee.

2.5.4 2006

Most recently, the interiors of the building were remodelled to provide accommodation for the Jesuit community who has previously been located in the Shirk Building to the South. The scheme delivered a chapel, dining and kitchen facilities, lounges and bedrooms. It also included a new platform lift to improve accessibility between levels. The scheme was designed by Cassidy & Ashton. The planning application references are 3/2004/0623 and 3/2004/0625. Reference is made in the decision notice regarding the possible insertion of new windows but no supporting information could be found regarding this.

2.6 Heritage context

The wider Stonyhurst site contains a number of Grade I, II* and II listed buildings, as itemised below. Much of the College resides within a Grade II* Historic Park and Garden, as illustrated on the diagram (bottom). The Old Infirmary is Grade II listed - refer to the appendices for the official list entry.

Buildings

- 01. Old Quadrangle
- 02. St. Peters Church
- 03. Shirk
- 04. South Front and Boy's chapel
- 05. Shireburn Quadrangle, Ambulacrum and former laboratories
- 06. Old Infirmary
- 07. Corn mill and Granary
- 08. St. Mary's Hall

- 09. Barn on north west side of farmyard
- 10. Barn at south east side of farmyard
- 11. Woodfields Farmhouse and No. 8L

Landscape features

- A. Gardens (character area)
- B. Gate piers
- C. Wall and gateway door
- D. Statue of St Jerome
- E. Statue of St Mary Magdalene
- F. Retaining wall, statue and observatory pond
- G. Garden steps walls and piers
- H. Gate piers
- I. Observatory
- J. Garden steps and walls
- K. Former font
- L. Wall
- M. The garden pavilions and connecting wall
- N. Harry Meadow (character area)
- O. Two piers and wall



Listed buildings and structures at Stonyhurst - not to scale



Heritage significance diagram (re-presentation of CMP diagram)

2.7 Conservation Management Plan

The Stonyhurst CMP consists of three separate volumes and was compiled in 2015 by The Architectural History Practice Ltd. Previous conservation plans were produced in 1999 by Martin Stancliffe Architects and in 2008 by Nightingale Associates. The document was produced to describe and explain the significance of the historic buildings, archaeology and landscape of Stonyhurst, in the context of the latest conservation practice and planning policy (as of 2015). The brief for the Conservation Management Plan was agreed with Historic England.

2.8 Heritage significance

Part 1, Section 4.2 of the Conservation Management Plan includes a significance assessment of the buildings, per key principles of the NPPF relating to the management of heritage assets, and change to those assets. A diagram representing this information has been re-presented above to communicate the most significant parts of the building in simple terms.

The Old Infirmary is categorised as having high exterior and low-medium interior significance. The West and South façades are of particular significance in the overall context of the West and South Fronts, as represented by the dashed line on the diagram. This significance assessment has informed the design proposals. Section 5.1, of Part 2 of the Conservation Management Plan, elaborates further:

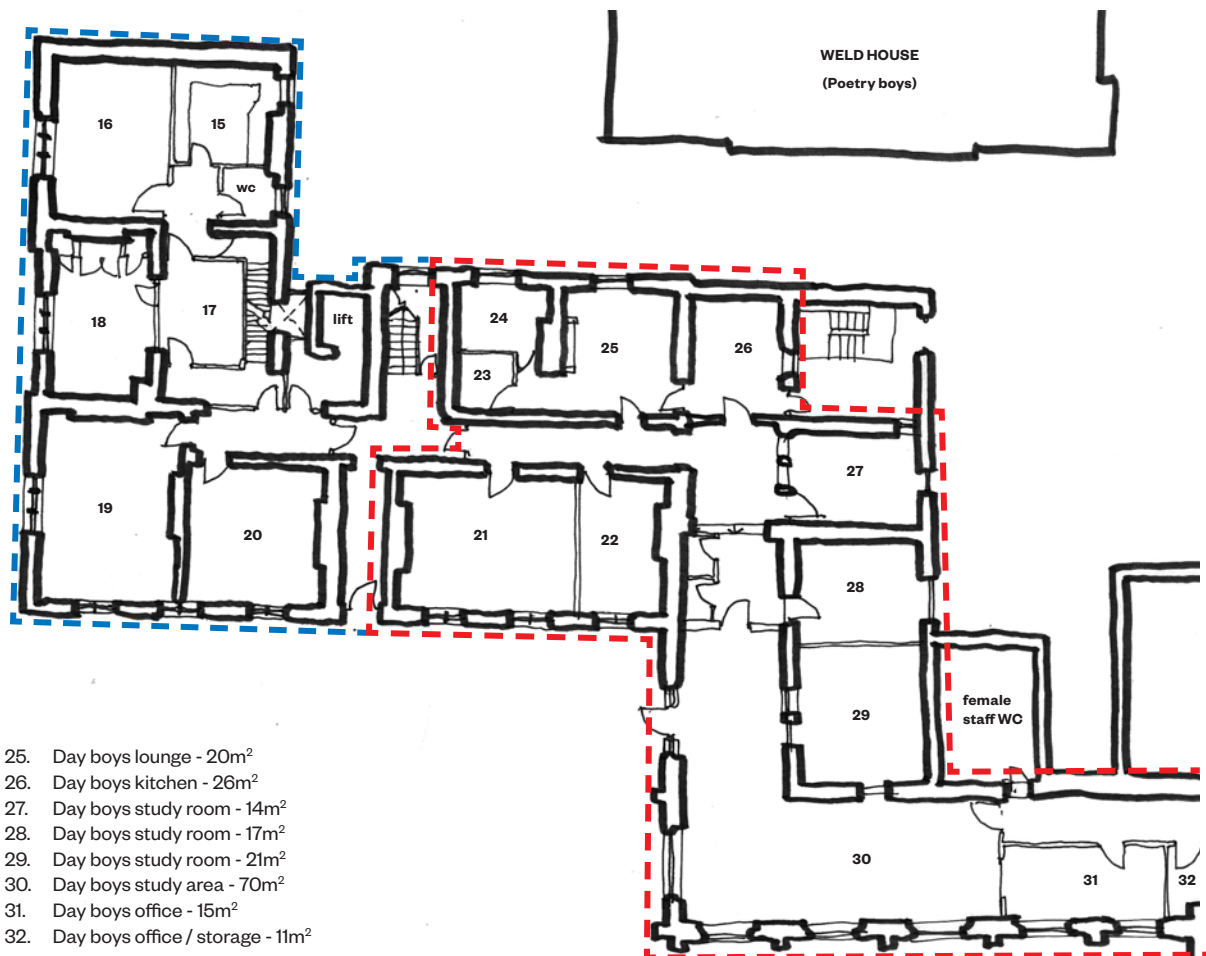
“High significance for historic, aesthetic and communal values, as part of the buildings rebuilt by the Jesuits during the mid C19, and forms an important part of the west front composition. The interior has medium significance for aesthetic and evidential values and has few historic features, due to successive phases of remodelling. Recent finishes and fittings have no significance. Overall, high significance.”

BASEMENT FLOOR (not to scale)



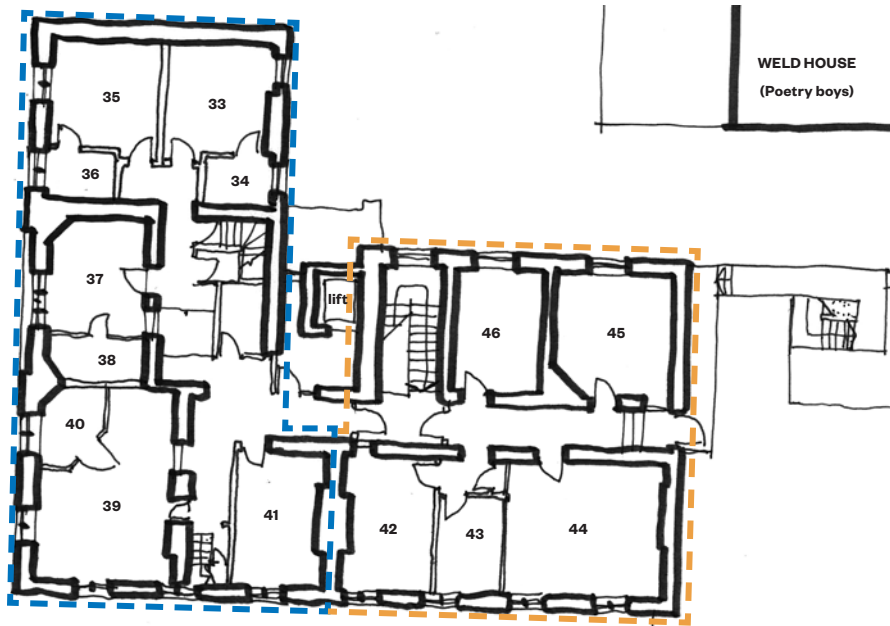
- 01. Classics classroom - 19m²
- 02. Classics classroom - 20m²
- 03. Classics office - 17m²
- 04. Staff bedroom - 23m²
- 05. Staff washroom - 13m²
- 06. Bathroom - 4m²
- 07. Laundry - 6m²
- 08. Drying room - 5m²
- 09. Trunk store - 16m²
- 10. Pump room - 4m²
- 11. Plant room - 16m²
- 12. Plant room - 14m²
- 13. Linen store - 9m²
- 14. Store - 5m²

GROUND FLOOR (not to scale)



- 25. Day boys lounge - 20m²
- 26. Day boys kitchen - 26m²
- 27. Day boys study room - 14m²
- 28. Day boys study room - 17m²
- 29. Day boys study room - 21m²
- 30. Day boys study area - 70m²
- 31. Day boys office - 15m²
- 32. Day boys office / storage - 11m²

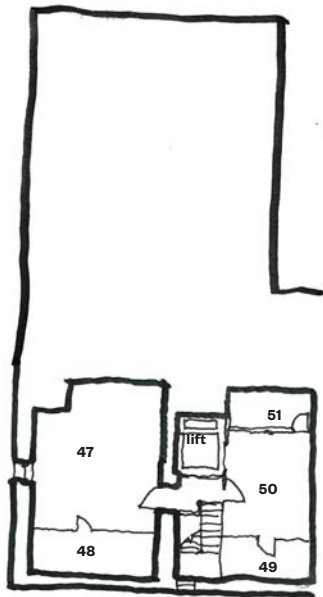
FIRST FLOOR (not to scale)



- 33. Jesuit bedroom - 14m²
- 34. En-suite bathroom - 4m²
- 35. Jesuit bedroom - 15m²
- 36. En-suite bathroom - 4m²
- 37. Jesuit bedroom - 15m²
- 38. En-suite bathroom - 4m²
- 39. Jesuit bedroom - 27m²
- 40. En-suite bathroom - 4m²
- 41. Bedroom - 15m²
- 42. Flat master bedroom - 15m²
- 43. Flat bedroom - 8m²
- 44. Flat living room - 26m²
- 45. Flat kitchen - 18m²
- 46. Flat bathroom - 14m²
- 47. Loft store room - 22m²
- 48. Loft store room - 7m²
- 49. Loft store room - 4m²
- 50. Loft store room - 11m²
- 51. Loft store room - 4m

WELD HOUSE
(Poetry boys)

SECOND FLOOR (not to scale)



2.9 Existing room by room usage

From around 2004 until September 2018, much of the Old Infirmary served as residence for a number of Jesuit priests. This area is now unused and has become part of College accommodation. However, the chapel (number 18) is consecrated ground and will remain as existing moving forward. Minor decorative improvement works may be required, but by and large this space will be protected for the duration of refurbishment works. At first floor, half the floor plan was until summer 2018 a staff flat, but is now vacant and available for use.

The remainder of the ground floor contains sixth form day pupil study space, and a staff WC. The staff WC will not be touched as part of proposed works. The day pupils will need to be moved.

At basement level, ancillary accommodation accounts for most of the floor area. There is also a redundant staff flat and WC's. To the North are a pair of classics classrooms and an office, that are in occasional use. Classics will need to be moved, which is already a Masterplan recommendation due to the remote location from other teaching facilities.

- Jesuit priest accommodation (out of use)
- Teaching rooms
- Higher Line day boys
- Staff living accommodation (out of use)

3.0 Heritage assessment

3.0 Heritage assessment

This section describes the purpose and need for the proposed alterations to the Old Infirmary, and justifies the reasons why this option has been adopted over possible alternatives.

3.1 Heritage policies

The National Planning Policy Framework [NPPF] was issued in March 2012 and immediately replaced the old system of PPGs and PPSs. The NPPF was later updated in July 2018.

The NPPF introduced a presumption in favour of sustainable development [para. 11] whereby proposed developments which correctly balance the requirements of economic, social and environmental issues should be granted planning permission unless there are strong reasons why permission should not be granted.

With regards to heritage issues the following extracts are considered of particular relevance:

Para. 184: . Heritage assets range from sites and buildings of local historic value to those of the highest significance, such as World Heritage Sites which are internationally recognised to be of Outstanding Universal Value. These assets are an irreplaceable resource, and should be conserved in a manner appropriate to their significance, so that they can be enjoyed for their contribution to the quality of life of existing and future generations.

Para. 185: Plans should set out a positive strategy for the conservation and enjoyment of the historic environment, including heritage assets most at risk through neglect, decay or other threats. This strategy should take into account:

a) the desirability of sustaining and enhancing the significance of heritage assets, and putting them to viable uses consistent with their conservation;
b) the wider social, cultural, economic and environmental benefits that conservation of the historic environment can bring

Para. 189: In determining applications, local planning

authorities should require an applicant to describe the significance of any heritage assets affected, including any contribution made by their setting. The level of detail should be proportionate to the assets' importance and no more than is sufficient to understand the potential impact of the proposal on their significance. As a minimum the relevant historic environment record should have been consulted and the heritage assets assessed using appropriate expertise where necessary.

Para. 192: In determining applications, local planning authorities should take account of:

a) the desirability of sustaining and enhancing the significance of heritage assets and putting them to viable uses consistent with their conservation;
b) the positive contribution that conservation of heritage assets can make to sustainable communities including their economic vitality; and
c) the desirability of new development making a positive contribution to local character and distinctiveness.

Para. 196: Where a development proposal will lead to less than substantial harm to the significance of a designated heritage asset, this harm should be weighed against the public benefits of the proposal including, where appropriate, securing its optimum viable use.

Ribble Valley Core Strategy was adopted by the Council on 16 December 2014. Policy EN5 states that there will be a presumption in favour of the conservation and enhancement of the significance of heritage assets and their settings. Assets and their settings will be conserved and enhanced in a manner appropriate to their significance for their heritage value; their important contribution to local character, distinctiveness and sense of place; and to wider social, cultural and environmental benefits.

3.2 Heritage assessment methodology

Paragraph 189 of the NPPF states that in determining applications, local planning authorities should require an applicant to describe the significance of the heritage assets affected, including the contribution made by their setting. This heritage assessment has been prepared in accordance with this guidance to evaluate the significance of the relevant and impacted heritage assets at Stonyhurst and the potential impact of the proposal upon this significance.

Accordingly, the following approach was undertaken to produce the heritage assessment:

- Desktop study of existing literature including listing description and associated documents, photos and drawings (including the three parts of the Conservation Management Plan);
- Site visit to review the context in respect of the existing condition of the Old Infirmary;
- Assessment of the results of the first two stages to establish the significance of the site, its heritage assets; and
- Assessment of the impact of the proposed development upon the identified assets.

The application sits comfortably within this local and national policy context. The proposed refurbishment secures a viable long term use for the building whilst enabling future restoration to the current condition. Furthermore, this assessment determines that the proposals will lead to less than substantial harm due to the sensitive design approach and minimal structural alterations. As there are no material alterations proposed to the external fabric, it is set out that the development would not have a detrimental impact upon the significance of the Registered Park and Gardens, the composition of the Fronts or any of the Listed Buildings on site.

3.3 Overview of the works

The application seeks listed building consent to refurbish the existing Old Infirmary building and attached passage into a sixth form boarding house. Accommodation will consist of 23 en-suite single and twin rooms, social spaces and pastoral staff accommodation. The existing chapel will be integrated into the proposals.

3.4 Alternatives considered

As part of the 2018 Masterplan, that involved extensive consultation with staff, other uses were considered to deliver best use of the building:

- The cellular nature of the rooms limits teaching use without major intervention, and the location at one end of the building is less than ideal.
- Administrative space would suit the size and proportion of the rooms. However, any shortages could be more effectively addressed through shared office space and only part of the Old Infirmary would be needed in this respect.
- Fundamentally, the Masterplan determined the major space pressures at the College are around boarding capacity, and the location adjacent to Weld House, on the West Front, is ideally suited.

3.5 Scope of work

In brief, the scope of works consists of the following, as drawn on the accompanying proposed plans:

- Removal of modern decorative wall coverings
- Removal of modern suspended ceilings
- Remedial repair works to plaster as required
- Removal of some modern existing doors
- Remedial patch plastering where required
- Paint decoration of existing; walls, doors, woodwork, interiors of windows
- Electrical rewiring (reusing existing wall chases where possible)
- En-suite bathroom pods
- New hot and cold water pipework distribution
- New fitted furniture to bedrooms
- Construction of new acoustic stud and plasterboard partition walls
- Construction of new MF ceilings

Existing historic features, such as the 19th Century marble fireplace at Ground Floor, are to be retained and protected for the duration of the works.

Existing (original) coving will remain in place. Existing (original) skirting, window surrounds and architraves will be retained, repaired where necessary and decorated.

The existing chapel, that is consecrated ground, will remain as existing with minor decorative repair work where required.

New elements, such as partitions and ceilings, will be connected to the existing fabric using soft joint detailing with joinery scribed to existing finishes, and will be reversible in the future. Scrim tape will be used to minimise cracking.

There are minimal amounts of structural intervention related to the proposed refurbishment, to maintain the historic plan and avoid exacerbating historic settlement of the walls. More detailed investigations are ongoing by specialists to determine the need for long term remedial works to safeguard the future of the buildings and ensure their safety.

An asbestos refurbishment survey will be undertaken at the earliest opportunity. This will necessitate some opening up works but is absolutely necessary from a Health and Safety and Building Regulations perspective. The shortlisted contractors have prior experience of working at the College and will be thoroughly briefed with regards to minimising harm to the existing fabric.

3.6 Stakeholder consultation

Due to time constraints, a formal pre-application has not been submitted to Ribble Valley Borough Council on this occasion. However, the proposals have been discussed informally on the telephone with Planning Officer Adrian Dowd and no immediate objections were realised. Further to this, a walkaround of the Old Infirmary was undertaken on the 15th January with Nicola Hopkins, John Macolch and Adrian Dowd in attendance with Levitt Bernstein. The boarding refurbishment principles were discussed in general terms, and no immediate objections were raised.

A telephone call was made to David James of Historic England on 18th January to discuss the proposals. David has familiarity with the strategic Masterplan for Stonyhurst College, and provided formal feedback in May 2018 following a walkaround with Levitt Bernstein and a review of the Masterplan document. It was informally agreed at the time that pre-application consultation with Historic England was not essential or indeed necessary for all refurbishment projects such as this, where the impact on the historic fabric is kept to a minimum and the proposals are in keeping with the Strategic Masterplan. On this basis it was agreed during the call that a formal pre-application discussion was not necessary on this occasion. Nonetheless, the proposals were discussed in principle, the general approach was supported and no immediate objections were raised. Furthermore, it was also acknowledged by both parties that consultation would be undertaken during the assessment of the application and a formal opportunity for feedback would be given at this point.

With respect of alterations to the buildings, Part 1 - Section 5.3 of the Conservation Management Plan suggests a degree of internal consultation:

“A lot of valuable knowledge about the buildings is held by the College’s Curator, the Archivist, the Maintenance Manager and other long-standing members of staff, and this internal resource should be used when questions arise about the buildings.”

On this basis, the Estates / Maintenance Manager and Curator have been consulted during the initial design process, to ascertain knowledge of the existing buildings and appropriateness of the proposed refurbishment respectively. A telephone conversation was held with the Curator Jan Graffius, on 18th December as a follow up to previous discussions. The principles of the proposals and approach to design were discussed and Jan conveyed her support for the refurbishment and the strategy for integrated new and existing elements. Further consultation will be undertaken to agree suitable colours and furniture finishes in due course.

Finally, we have also sought input from Marion Barter, a former English Heritage Historic Buildings Adviser who co-authored the Conservation Management Plan. Marion, in her capacity as a heritage consultant has provided input into the application, including this heritage statement. Marion has offered support in principal towards the proposals.

3.7 Significance assessment

Para. 189 of the NPPF requires applicants to identify and assess the particular significance of heritage assets or their setting and take this into account when considering the impact of a proposal in order to avoid or minimise conflict between the heritage asset’s conservation and any aspect of the proposal.

The significance of a heritage asset may comprise a number of factors which are similar to the criteria for listing and include, but are not restricted to:

- Age and rarity: most buildings built before 1700 which survive in anything like their original condition are listed, as are most built between 1700 and 1840
- Architectural interest: through architectural design, decoration and craftsmanship and also important examples of particular building types and techniques

- Historic interest: encompassing buildings which illustrate important aspects of the nation's social, economic, cultural or military history, or close historical association with nationally-important people or events
- Group value: especially where buildings are part of an important architectural or historic group or are a fine example of planning (such as squares, terraces and model villages)

Taking such factors into account, the relative significance of the elements of the site can be assessed, using the following scale:

- **High significance** – buildings/features which make an important contribution to the architectural and historic interest and character of the site, through age, rarity, architectural merit or historical association or group value, and whose preservation and enhancement is considered essential.
- **Medium significance** – those making a lesser contribution, but which nevertheless are also considered worthy of preservation or enhancement.
- **Low significance** – those making only a limited contribution to the site overall, although not necessarily detracting from it.

A significance assessment of the Old Infirmary is set out in section 2.8 of this report, and volume 2 of the Conservation Management Plan. The breadth and scope of the Conservation Management Plan, that was published following extensive consultation with Ribble Valley Borough Council and Historic England, the College Curator and Heritage experts, is determined by Levitt Bernstein to be of sufficient basis to accept and on which to base this application.

It is acknowledged however, that since this assessment was made in 2015, the Jesuit priests are no longer in the building. We do not determine this to have a material impact on the significance assessment but the evidential interest of this use has been noted. The Chapel is the only room that demonstrably reflects this use although is itself determined to be of no particular internal architectural merit due to the modern nature of the decoration and joinery features utilised for this refurbishment in 2004.



Former Jesuit lounge with architectural features added in 2004



Existing Jesuit Chapel, added and consecrated in 2004-2006

3.8 Impact assessment

As the refurbishment is internal, it is the interior significance assessment (from the conservation Management Plan) that is of particular relevance:

“The interior has medium significance for aesthetic and evidential values and has few historic features, due to successive phases of remodelling. Recent finishes and fittings have no significance.”

The general design approach is to retain the historic fabric and any remaining historic features to prevent the further loss of these features. The proposals therefore retain any remaining original coving, ceiling roses and the 19th Century marble fireplace highlighted in the Statutory Listed Building description. The fireplace will be protected and retained as part of the proposals for its aesthetic and evidential value and will be integrated within a new twin study bedroom. Four other chimney breasts will be affected by the works due to the introduction of new bathroom pods and stud partitions. These fireplaces have been blocked up, and the original surrounds removed and replaced. Interfacing with the chimney breasts will cause minor harm to the evidential value but this is determined to be within the thresholds set out in paragraph 196 of the NPPF, and is also reversible. The original coving and ceiling roses will remain in situ.

Existing plaster finishes will be retained and patched where viable although some disruption to these finishes is inevitable due to the construction and fixing of new stud walls and MF ceilings. Some walls may need to be skimmed, depending on condition, but this will be reviewed on a case by case basis. Less substantial existing walls may need to be dry lined for acoustics or fire separation purposes - the details of which are pending agreement with Building Control.

The proposals include the removal of recent finishes and fittings that were undertaken during the 2004 refurbishment works. Due to the modern origins of the decoration and joinery, that has no significance per the statement in the Conservation Management Plan, this work is determined to cause zero harm.

The proposals include the removal of some existing, original doors. This is to enable the subdivision of larger spaces into single rooms without the need to create new openings in the historic stone walls. These doors will be stored by the College for possible

future restoration. The frames and architraves will be retained in situ for evidential value. It is determined that this may cause minor heritage harm but within the threshold set out in paragraph 196 of the NPPF, and to enable the optimum viable use of the building which is individual, en-suite study bedrooms.

The proposals include the insertion of new en-suite pods. The associated infrastructure will require minor ‘coring’ of the corridor walls to enable the distribution of drainage and hot and cold water, but neither this or the associated pipework will be visible. On this basis it is assessed to cause negligible heritage harm and no reduction in the significance of the asset. These works can also be reversed in the future.

The proposals include the insertion of new MF ceilings and new stud partitions. These will cover up some historic coving and interface with existing walls respectively. The subdivision of rooms will affect the spatial character. As such, there is determined to be some impact on architectural and historic significance. As historic ceiling features will be concealed by new MF ceiling there is some impact on aesthetic significance. To mitigate the impacts in both cases, details for new wall and ceiling interfaces with existing walls will be designed to facilitate reversal in the future. On this basis we assert the new walls and ceilings to be justified particularly as the proposals enable good use of the existing building.

A full set of existing surveys and an internal photographic survey are provided as part of this application. This will provide a publicly accessible resource with regards to any evidential value that may be determined to be held by the current layout, prior to any strip out works or alterations.

Overall, the impact of the proposals on the significance of the asset is determined to be minor. A boarding house is an optimal and viable long term use for the building, and therefore deemed to be both appropriate and sustainable.

4.0 Appendix

4.0 Appendix

Appendix A - Statutory Listed Building Description

List entry summary

This building is listed under the Planning (Listed Buildings and Conservation Areas) Act 1990 as amended for its special architectural or historic interest.

Name: Stonyhurst College, Old Infirmary and attached passage

List entry Number: 1419719

Location

Stonyhurst College, Stonyhurst, Clitheroe, Lancashire, BB7 9PZ

The listed building(s) is/are shown coloured blue on the attached map. Pursuant to s.1 (5A) of the Planning (Listed Buildings and Conservation Areas) Act 1990 ('the Act'), structures attached to or within the curtilage of the listed building (save those coloured blue on the map) are not to be treated as part of the listed building for the purposes of the Act.

County: Lancashire

District: Ribble Valley

District Type: District Authority

Parish: Aughton, Bailey and Chaigley

National Park: Not applicable to this List entry.

Grade: II

Date first registered: 14-Jan-2015

Date of most recent amendment: Not applicable to this List entry.

Summary of buildings

School buildings, 1841 and later.

Reasons for Designation

The former Infirmary and attached passage at Stonyhurst College, erected in 1842-3, are listed at

Grade II for the following principal reasons:

** Architectural Interest: attributed to J.J.Scoles, a notable Catholic architect, the buildings are good examples of mid-C19 Gothic revival work complementing the West Front composition developed by the Jesuits; * Historical Interest: Stonyhurst was the destination for Jesuits fleeing continental persecution in 1794, and played a central role in the growth of the Roman Catholic Church in England throughout the C19 and C20, as the principal school and college for the Society of Jesus in England; * Group Value: the Old Infirmary and passage forms part of a strong group with other elements of the complex at Stonyhurst.

History

The buildings at Stonyhurst College grew out of a courtyard plan house commenced by Sir Richard Shireburn in 1592, on or close to the site of a medieval house. Work continued under his successors, including Sir Nicholas Shireburn who added classical features and a formal landscape setting after 1690. The Shireburns and their descendants were a notable recusant Lancashire Catholic family. Mary, the daughter of Sir Nicholas married the 8th Duke of Norfolk, inheriting the estate in 1732, but the house was largely unoccupied during the rest of the C18.

In 1794 the Society of Jesus fled from a temporary school in Liège, and came to Stonyhurst at the invitation of Thomas Weld, the Shireburns' descendant. In 1809, Weld gifted the buildings and estate at Stonyhurst to the Jesuits. In 1803, the Society of Jesus was re-established in England at Stonyhurst under the Provincial Marmaduke Stone, although the Society was not formally recognised by the English Bishops until 1829. In this location, the school continued the lineage of Catholic boys' education and the training of Jesuit priests for the English Mission established at Saint-Omer

(St Omers), France by Father Robert Persons in 1593, following Elizabeth I's Protestant Religious Settlement of 1559. In affiliation to the University of London, from 1840 to 1916, Stonyhurst provided degree-level education for men (known as the Philosophers) at a time when Catholics were excluded from Oxford and Cambridge. As the centre for the Society of Jesus in England a seminary was maintained at St Mary's Hall (NHLE 1362219) from 1828 to 1926. Stonyhurst has been co-educational since 1988, continuing to expand on the site and to adapt existing buildings. This long history of Catholic education is reflected in an important collection of Catholic and Jesuit artefacts, devotional relics and works of art, many in situ within the college buildings since the C19.

The Jesuits adapted the Shireburn domestic buildings and added new school ranges including Shirk, as well as striving towards self-sufficiency with its own gas plant for lighting and later a corn mill. As Catholic ambition and confidence grew after the Emancipation Act (1829), the Jesuits built (and still own) St Peter's Church (1833-35), to serve local Catholics as well as the college. The college buildings expanded in the mid-C19 with the completion of the north side of the Front Quadrangle and the Sodality Chapel (1859). Further development in the mid-C19 included an infirmary, new kitchens, the Ambulacrum and extended chemistry laboratories. More ambitious rebuilding culminated in the new South Front and Boys Chapel designed by Dunn & Hansom, 1875-1888. Early C20 development included a gymnasium and physics laboratory and, in the 1960s, an accommodation block known as the New Wing. This building was previously Listed under an entry on the NHLE which covered the entire complex of school buildings at Stonyhurst (NHLE 1072336).

Details

Roman Catholic boarding school comprising Jesuit community accommodation areas, collection display rooms and archive stores, and offices.

FORMER INFIRMARY, 1842-3, attributed to J.J.Scoles.

MATERIALS: sandstone ashlar or coursed dressed stone, with deep moulded plinths, string courses, hoodmoulds, cornices and copings; pitched roofs of Welsh slate. Jacobean Revival style. **PLAN:** Infirmary located at north-west corner of the WEST FRONT, connected by covered dog-leg passage.

EXTERIOR: 1842-3. Built on site of demolished outbuilding, it balances St Peter's Church in composition of West Front. Ashlar, gabled Welsh slate roof with ashlar ridge stacks, cast iron rainwater goods. 2 storeys over basement with attics, 5-bay symmetrical south front. C17 domestic revival style. Central doorway flanked by cross windows with sashes, moulded plinth, string course to first floor mullioned windows, all windows have hoodmoulds. Plain parapet to roof with coped verges and pinnacle finials. Gabled west front has with two large semielliptical arched openings to basement, mullioned windows to upper floors. Rear is plainer. A single-storey dog-leg covered passage, c1843, connects the former Infirmary to north-west corner of West Front. 5-bay south elevation, 3-light mullioned windows, buttresses, moulded parapet to Welsh slate hipped roof. On the north side is a single-storey lavatory block, known as Jumps (named after renovation funded by Ralph Lyon Jump OS, mid C20), c1870, with Welsh slate hipped roof with lantern, behind a parapet.

INTERIORS: C19 marble chimneypieces to some rooms in the former Infirmary. Marble floor to the lavatory block.

Appendix A - Statutory Listed Building Description (continued)

Selected sources

Books and journals

Graffius, Janet, A Stonyhurst Museum Guide, (nd)
Hartwell, C, Pevsner, N, The Buildings of England:
Lancashire North, (2009)
Muir, T. E., Stonyhurst, (2006)

Other

Architectural History Practice Ltd , Stonyhurst
College, Conservation Management Plan, Parts 1 and
2, 2014,

National Grid Reference: SD6896639062



(© Crown Copyright. All rights reserved. Licence no. 100042310)

Appendix B - Historic photos



1883



1885



1885



1885



1885

Appendix B - Historic photos (continued)



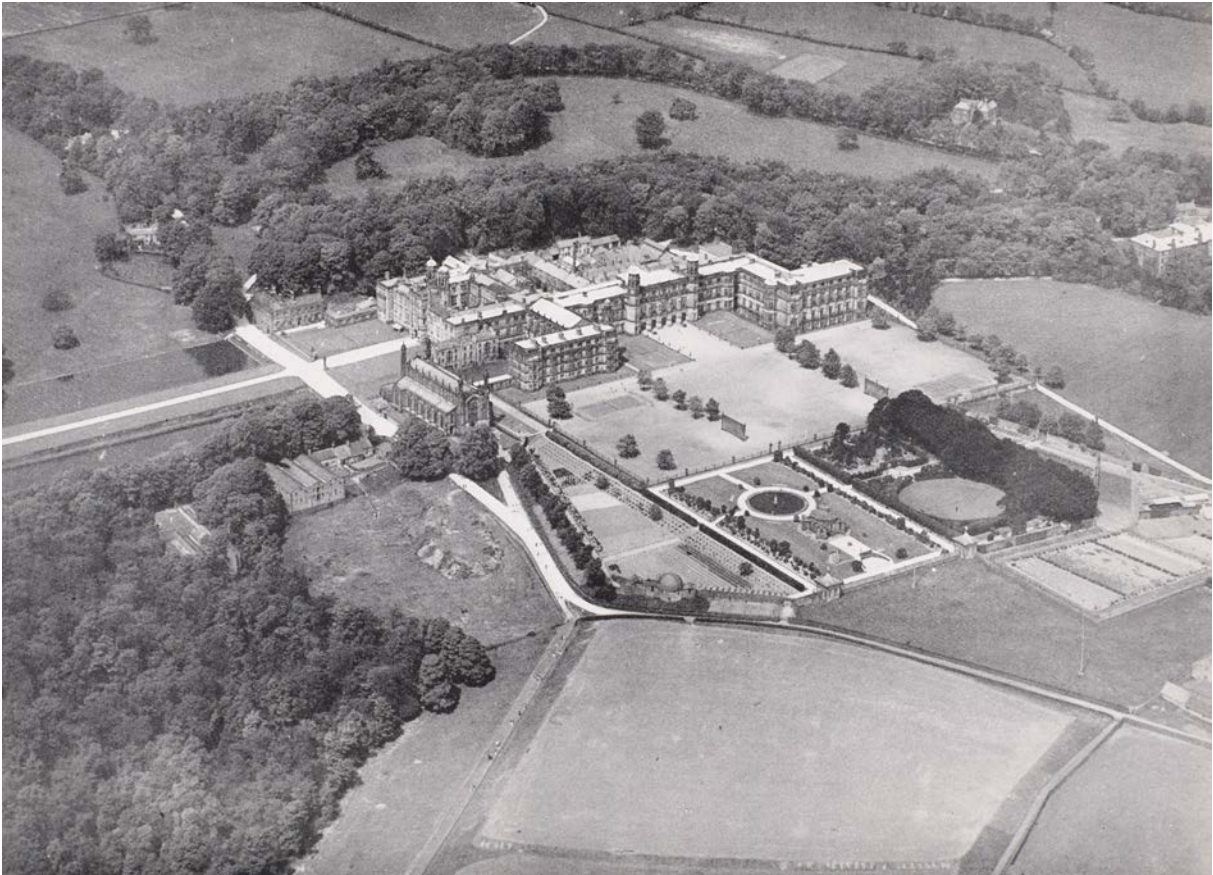
1885



1885



(unknown date)



(unknown date)



levittbernstein.co.uk

London
Thane Studios
2-4 Thane Villas
London N7 7PA
+44 (0)20 7275 7676

Manchester
Bonded Warehouse
18 Lower Byrom Street
Manchester M3 4AP
+44 (0)161 669 8740