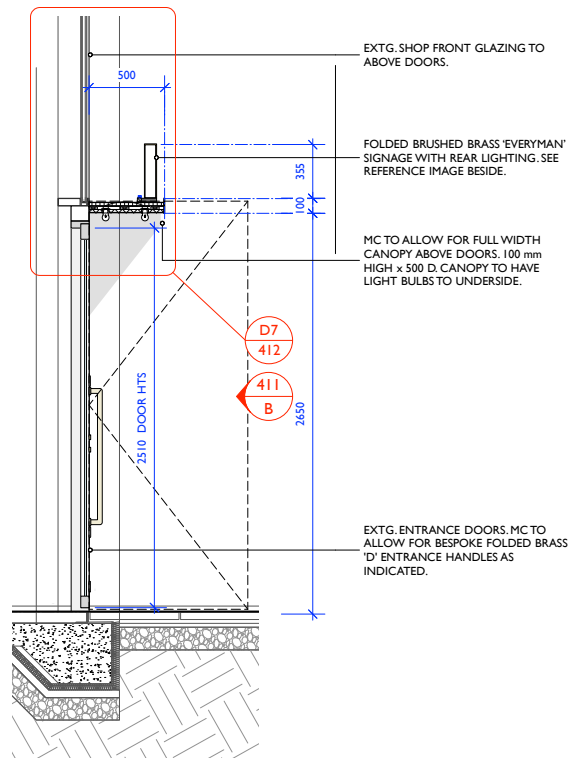


2 NO. READOGRAPH/MARQUEE SIGNS BY SIGNAGE CONTRACTOR. SEE ELEVATIONS ON DWG 007CLR/411 FOR LOCATIONS & SIZES.

EXTG. MASONARY WALL

D4 SIGNAGE DETAIL
1:25 @ A1/1:50 @ A3



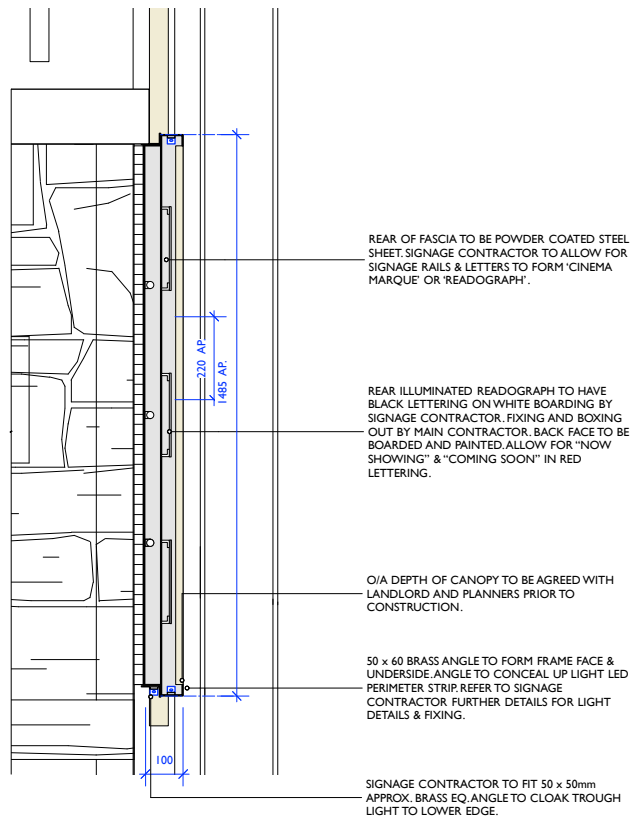
EXTG. SHOP FRONT GLAZING TO ABOVE DOORS.

FOLDED BRUSHED BRASS 'EVERYMAN' SIGNAGE WITH REAR LIGHTING. SEE REFERENCE IMAGE BESIDE.

MC TO ALLOW FOR FULL WIDTH CANOPY ABOVE DOORS. 100 mm HIGH x 500 D. CANOPY TO HAVE LIGHT BULBS TO UNDERSIDE.

EXTG. ENTRANCE DOORS. MC TO ALLOW FOR BESPOKE FOLDED BRASS 'D' ENTRANCE HANDLES AS INDICATED.

D5 SIGNAGE DETAIL
1:25 @ A1/1:50 @ A3



REAR OF FASCIA TO BE POWDER COATED STEEL SHEET. SIGNAGE CONTRACTOR TO ALLOW FOR SIGNAGE RAILS & LETTERS TO FORM 'CINEMA MARQUEE' OR 'READOGRAPH'.

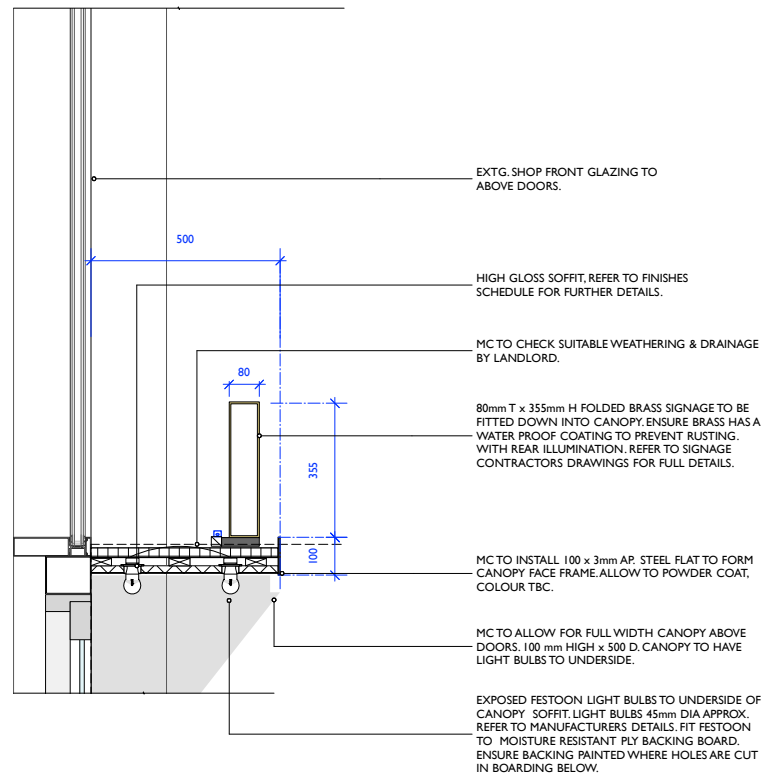
REAR ILLUMINATED READOGRAPH TO HAVE BLACK LETTERING ON WHITE BOARDING BY SIGNAGE CONTRACTOR. FIXING AND BOXING OUT BY MAIN CONTRACTOR. BACK FACE TO BE BOARDED AND PAINTED. ALLOW FOR 'NOW SHOWING' & 'COMING SOON' IN RED LETTERING.

O/A DEPTH OF CANOPY TO BE AGREED WITH LANDLORD AND PLANNERS PRIOR TO CONSTRUCTION.

50 x 60 BRASS ANGLE TO FORM FRAME FACE & UNDERSIDE. ANGLE TO CONCEAL UP LIGHT LED PERIMETER STRIP. REFER TO SIGNAGE CONTRACTOR FURTHER DETAILS FOR LIGHT DETAILS & FIXING.

SIGNAGE CONTRACTOR TO FIT 50 x 50mm APPROX. BRASS EQ ANGLE TO CLOAK TROUGH LIGHT TO LOWER EDGE.

D6 SIGNAGE DETAIL - READOGRAPH/MARQUEE
1:10 @ A1/1:20 @ A3



EXTG. SHOP FRONT GLAZING TO ABOVE DOORS.

HIGH GLOSS SOFFIT. REFER TO FINISHES SCHEDULE FOR FURTHER DETAILS.

MC TO CHECK SUITABLE WEATHERING & DRAINAGE BY LANDLORD.

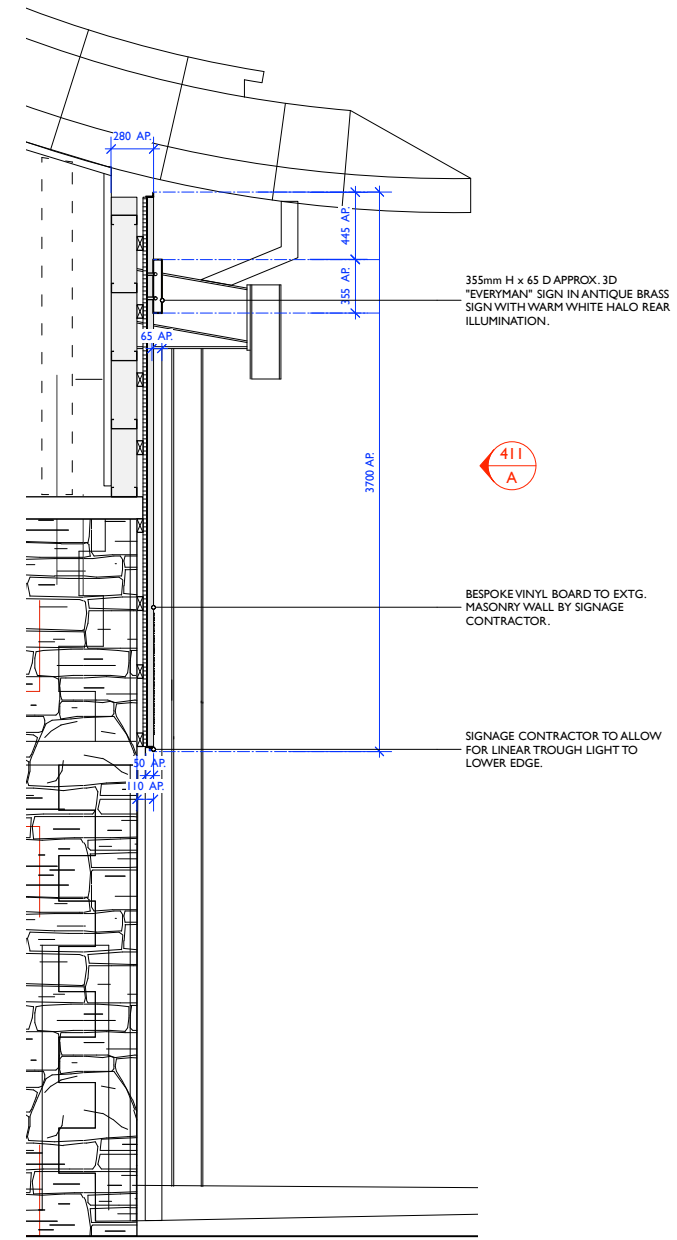
80mm T x 355mm H FOLDED BRASS SIGNAGE TO BE FITTED DOWN INTO CANOPY. ENSURE BRASS HAS A WATER PROOF COATING TO PREVENT RUSTING. WITH REAR ILLUMINATION. REFER TO SIGNAGE CONTRACTORS DRAWINGS FOR FULL DETAILS.

MC TO INSTALL 100 x 3mm AP. STEEL FLAT TO FORM CANOPY FACE FRAME. ALLOW TO POWDER COAT, COLOUR TBC.

MC TO ALLOW FOR FULL WIDTH CANOPY ABOVE DOORS. 100 mm HIGH x 500 D. CANOPY TO HAVE LIGHT BULBS TO UNDERSIDE.

EXPOSED FESTOON LIGHT BULBS TO UNDERSIDE OF CANOPY SOFFIT. LIGHT BULBS 45mm DIA APPROX. REFER TO MANUFACTURERS DETAILS. FIT FESTOON TO MOISTURE RESISTANT PLY BACKING BOARD. ENSURE BACKING PAINTED WHERE HOLES ARE CUT IN BOARDING BELOW.

D7 SIGNAGE DETAIL - CANOPY
1:10 @ A1/1:20 @ A3



355mm H x 65 D APPROX. 3D 'EVERYMAN' SIGN IN ANTIQUE BRASS SIGN WITH WARM WHITE HALO REAR ILLUMINATION.

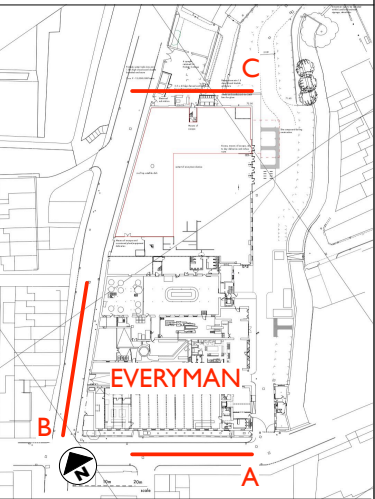
BESPOKE VINYL BOARD TO EXTG. MASONRY WALL BY SIGNAGE CONTRACTOR.

SIGNAGE CONTRACTOR TO ALLOW FOR LINEAR TROUGH LIGHT TO LOWER EDGE.

D8 SIGNAGE DETAIL - LARGE GRAPHIC
1:25 @ A1/1:50 @ A3

Notes

This drawing should not be scaled. The contractor is to verify all dimensions and conditions on site. This drawing is the property of Hudson Rock Design Ltd and they reserve the copyright. It is issued on the understanding that it will not be copied, reproduced or disclosed in whole or in part to any unauthorised party without written permission.



BLOCK PLAN - NTS



CARNIVAL LED - PICTURED ABOVE
SPEC DETAILS : 12V 0.6W LED 5500K - 6000K 44Lumen
THE CARNIVAL LED IS A DIMMABLE RANGE OF LED. UNITS OPERATE AT A LOW TEMPERATURE & DRIVE CURRENTS TO ACHIEVE MAXIMUM PERFORMANCE.

DATE	REVISION	NO.

PROJECT	EVERYMAN CLITHEROE CLITHEROE HOLMES MILL
---------	--

DRAWING	PROPOSED EXTERIOR DETAILS
---------	------------------------------

STATUS	FOR PLANNING
--------	--------------

DATE:	NOV 2018
-------	----------

DRAWN:	BF/RH
--------	-------

SCALE:	AS SHOWN
--------	----------

Hudson Rock Design Ltd, Studio 9, 5 Durham Way, Teesdale St, London, E2 6GF

DRAWING NUMBER:	007CLR/412	REV. NO.	/
-----------------	-------------------	----------	---

