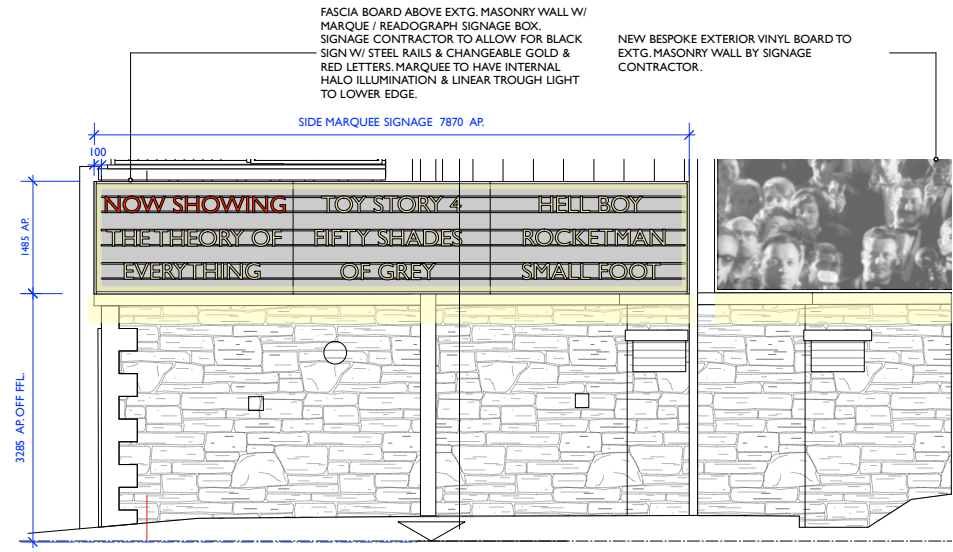


A NORTH EXTERIOR ELEVATION
1:100 @ A1/1:200 @ A3

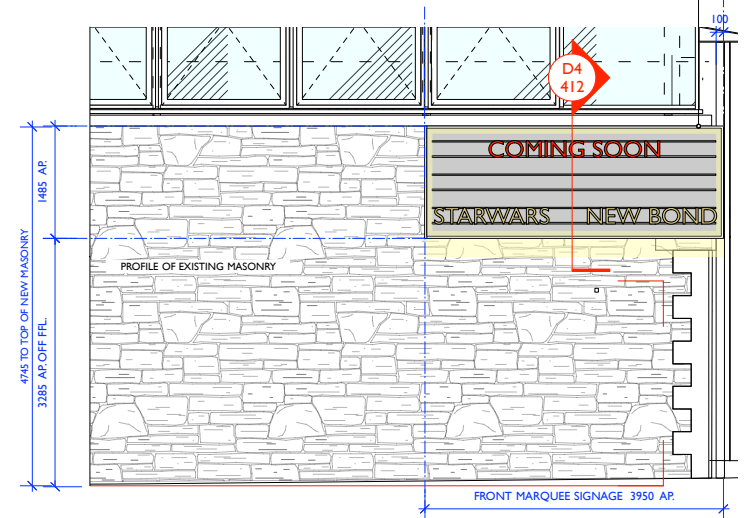
ALL DIMENSIONS FROM FLOOR LEVEL ARE TO A 71.7 DATUM, THE FLOOR VARIES FROM LEVEL 71.67 TO 71.71.

2ND FASCIA BOARD ABOVE EXTG. MASONRY WALL W/ MARQUE / READOGRAPH SIGNAGE BOX. SIGNAGE CONTRACTOR TO ALLOW FOR BLACK SIGN W/ STEEL RAILS & CHANGEABLE GOLD & RED LETTERS. MARQUEE TO HAVE INTERNAL HALO ILLUMINATION & LINEAR TROUGH LIGHT TO LOWER EDGE.

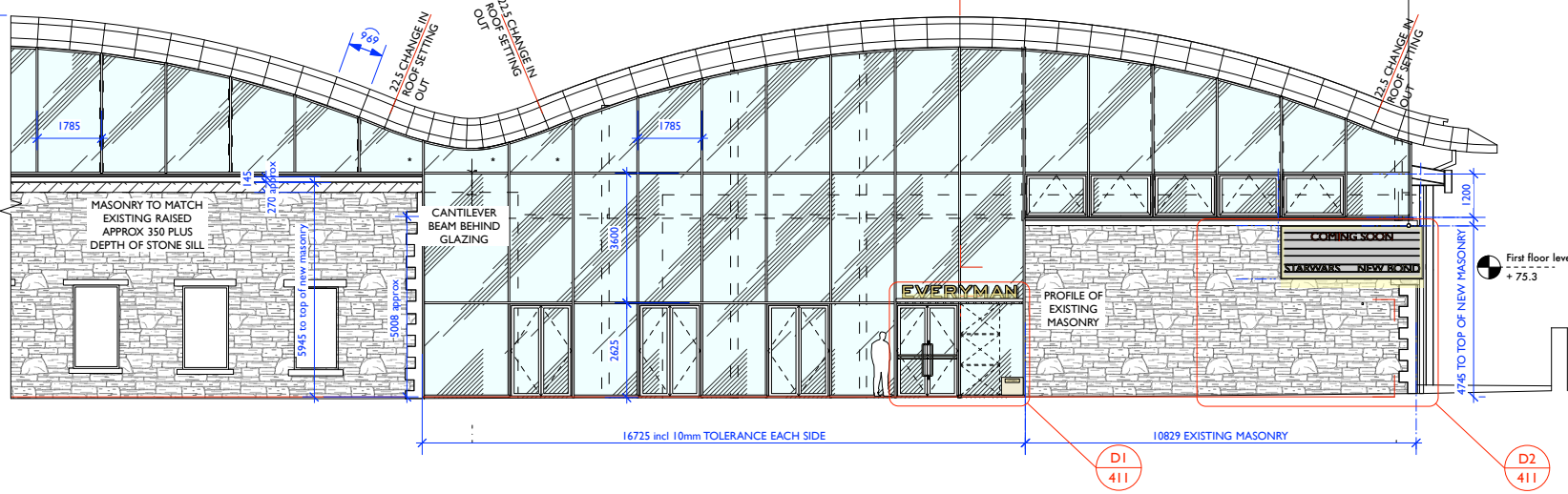


D3 SIGNAGE DETAIL
1:50 @ A1/1:100 @ A3

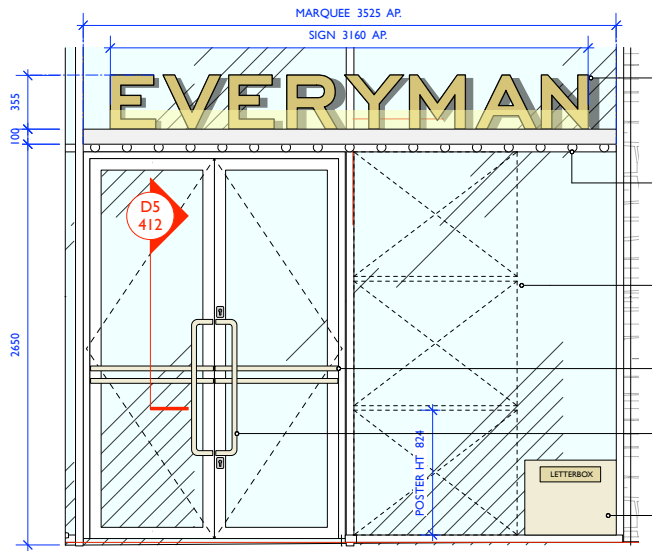
2ND FASCIA BOARD ABOVE EXTG. MASONRY WALL W/ MARQUE / READOGRAPH SIGNAGE BOX. SIGNAGE CONTRACTOR TO ALLOW FOR BLACK SIGN W/ STEEL RAILS & CHANGEABLE GOLD & RED LETTERS. MARQUEE TO HAVE HALO ILLUMINATION TO REAR OF SIGN.



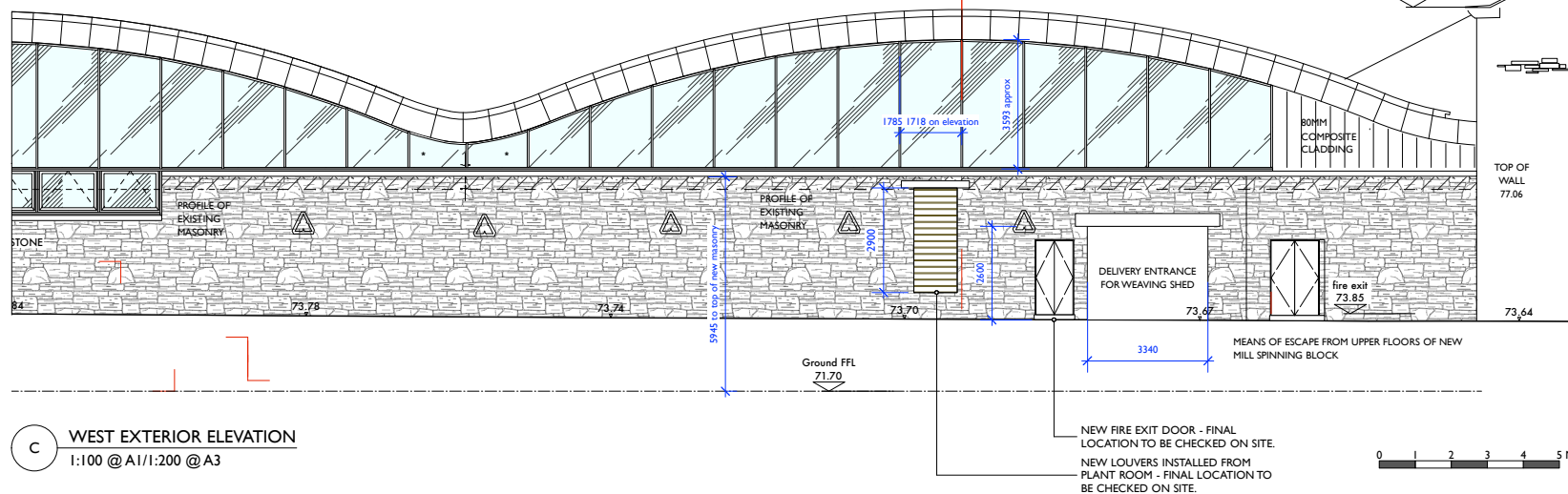
D2 SIGNAGE DETAIL
1:50 @ A1/1:100 @ A3



B EAST EXTERIOR ELEVATION
1:100 @ A1/1:200 @ A3



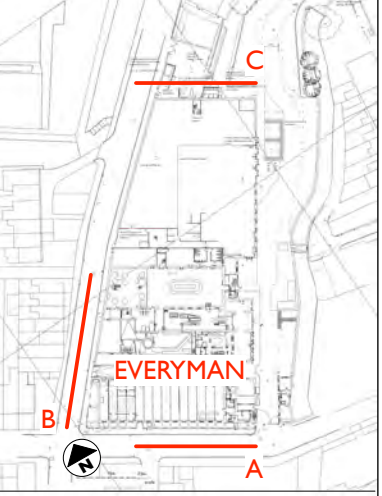
D1 SIGNAGE DETAIL
1:25 @ A1/1:50 @ A3



C WEST EXTERIOR ELEVATION
1:100 @ A1/1:200 @ A3

NEW FIRE EXIT DOOR - FINAL LOCATION TO BE CHECKED ON SITE.
NEW LOUVERS INSTALLED FROM PLANT ROOM - FINAL LOCATION TO BE CHECKED ON SITE.

Notes
This drawing should not be scaled. The contractor is to verify all dimensions and conditions on site. This drawing is the property of Hudson Rock Design Ltd and they reserve the copyright. It is issued on the understanding that it will not be copied, reproduced or disclosed in whole or in part to any unauthorised party without written permission.



BLOCK PLAN - NTS



CARNIVAL LED - PICTURED ABOVE
SPEC DETAILS : 12V 0.6W LED 5500K - 6000K 44Lumen
THE CARNIVAL LED IS A DIMMABLE RANGE OF LED. UNITS OPERATE AT A LOW TEMPERATURE & DRIVE CURRENTS TO ACHIEVE MAXIMUM PERFORMANCE.



REFERENCE IMAGE ABOVE
"EVERYMAN" FOLDED BRASS SIGN

DATE	REVISION	NO.
PROJECT	EVERYMAN CLITHEROE CLITHEROE HOLMES MILL	
DRAWING	PROPOSED EXTERIOR ELEVATIONS	
STATUS	FOR PLANNING	
DATE:	NOV 2018	
DRAWN:	BF/RH	
SCALE:	AS SHOWN	
DRAWING NUMBER:	007CLR/411	
REV. NO.	/	



Hudson Rock Design Ltd, Studio 7.5 Durham Yard, Teesdale St, London, E2 6GF