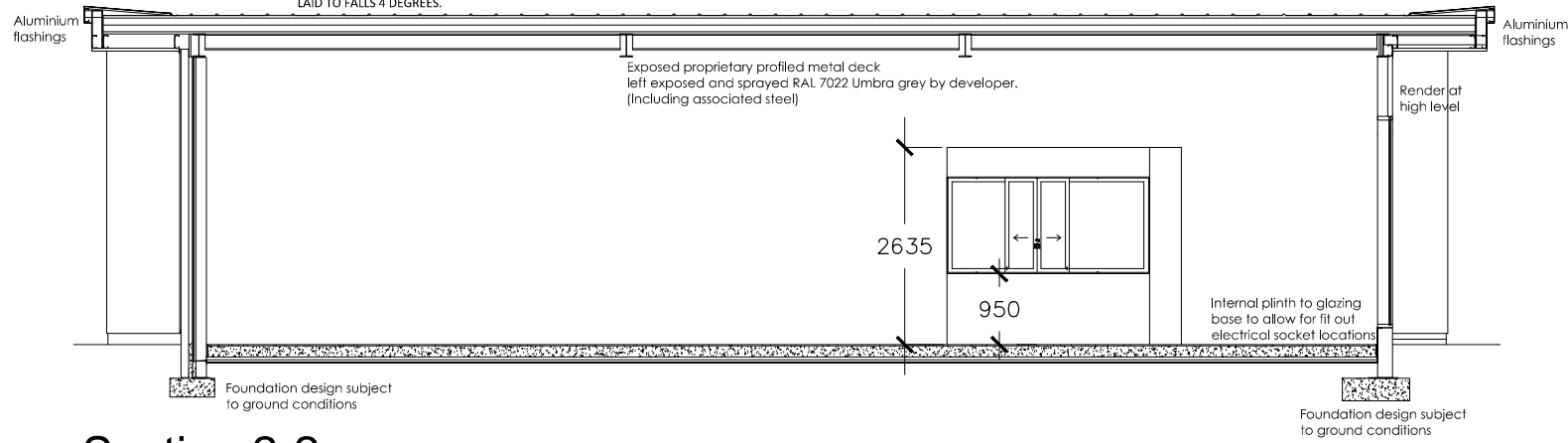
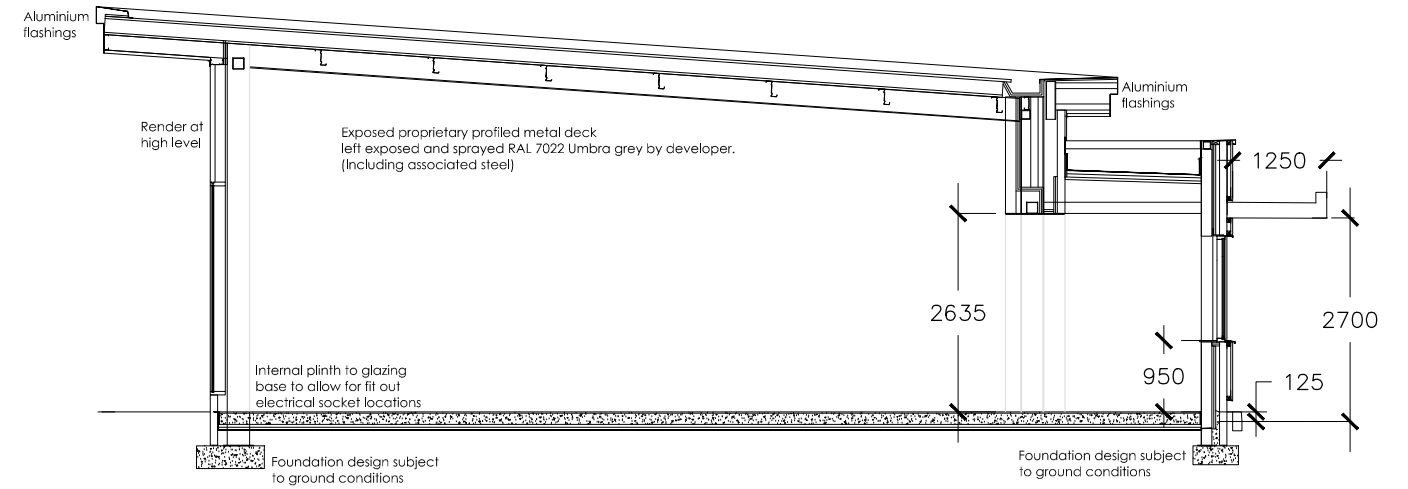


ROOF:
 PLASTISOL COATED PROFILE BUILT UP SYSTEM, PROFILE OUTER SHEET, 180mm ROCKWOOL (OR SIMILAR APPROVED) INSULATION, UNDERSIDE OF ROOF SOFFIT TO BE SPRAYED RAL 7022 TO SUIT TENANTS REQUIREMENTS, EXTERNAL ROOFING SHEET COLOUR ANTHRACITE GREY REF RAL 7016, ROOF BUILD UP TO ACHIEVE MIN U VALUE OF 0.25W/M²K. LAID TO FALLS 4 DEGREES.



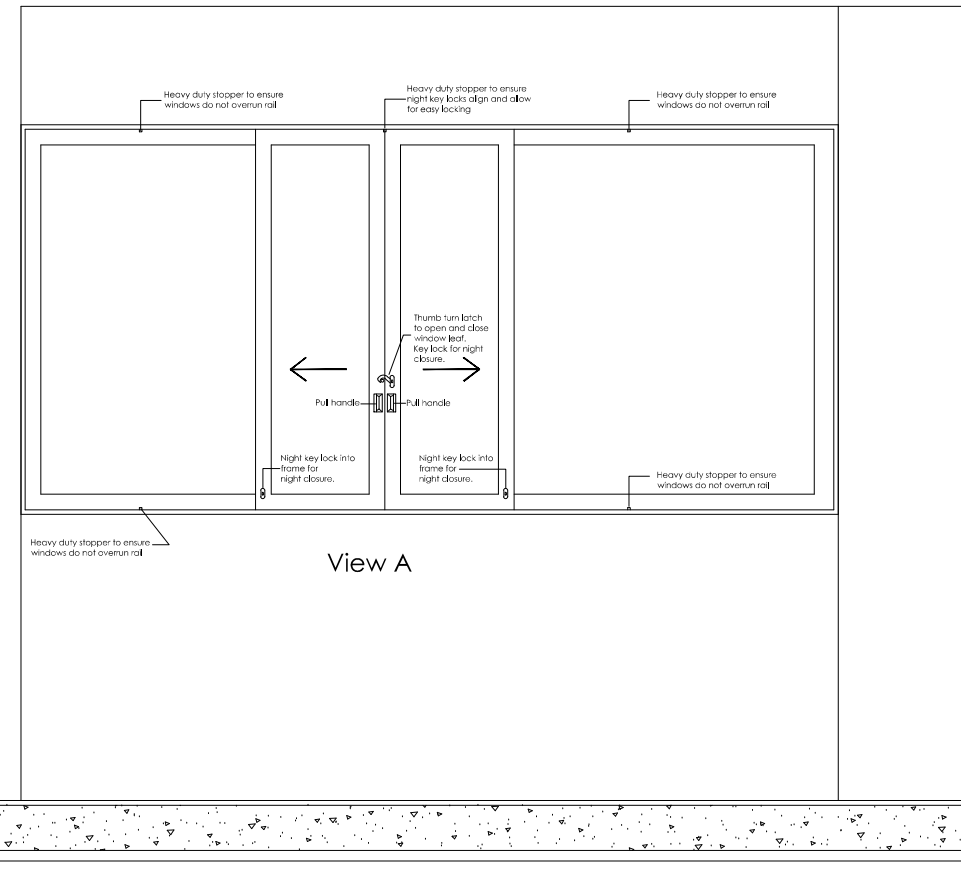
Section 2-2



Section 1-1

BUILDING SECTIONS 1:100

1. ROOF:
 PLASTISOL COATED PROFILE BUILT UP SYSTEM, PROFILE OUTER SHEET, 180mm ROCKWOOL (OR SIMILAR APPROVED) INSULATION, UNDERSIDE OF ROOF SOFFIT TO BE SPRAYED RAL 7022 TO SUIT TENANTS REQUIREMENTS, EXTERNAL ROOFING SHEET COLOUR ANTHRACITE GREY REF RAL 7016, ROOF BUILD UP TO ACHIEVE MIN U VALUE OF 0.25W/M²K. LAID TO FALLS 4 DEGREES.
2. FASCIAS AND SOFFIT:
 2a 2mm FLAT POWDER COATED ALUMINIUM FLASHING APPLIED TO FASCIA, SUPPORTED OFF SHEETING RAILS, ALL FIXED BACK TO STEEL FRAME IN ACCORDANCE WITH ENGINEERS DETAILS. COLOUR ANTHRACITE GREY REF RAL 7016.
 FLAT ALUMINIUM CLADDING PANEL SOFFIT, ANTHRACITE GREY REF RAL 7016. SUPPORTED FROM HORIZONTAL RAILS ALL FIXED BACK TO STEEL FRAME IN ACCORDANCE WITH ENGINEERS DETAILS.
 2b 2mm THICK ALUMINIUM BACKED PANELS. POWDER COATED PANTONE 202C (COSTA RED)
3. WALLS:
 3a BLOCKWORK TO RECEIVE THRU COLOUR RENDER - COLOUR RAL 9010 WHITE.
 3b COURSES UP TO 'DPC LEVEL IN FACING BRICKWORK - WIENERBERGER STAFFORDSHIRE SMOOTH BLUE, AVAILABLE VIA BRICKLINK TELD113 258 6600 WITH TILCON W14 MORTAR - SUBJECT TO PLANNING APPROVAL.
 3c HORIZONTALLY LAID TIMBER CLADDING FIXED TO SUB FRAME OFF BLOCKWORK - BRITISH WESTERN RED CEDAR (THUJA PLICATA) WITH A NON VOC EXTERIOR HIGH BUILD OIL FINISH NOTE: A SAMPLE OF TIMBER CLADDINGS TO BE CONSTRUCTED ON SITE FOR APPROVAL.
4. GLAZING:
 THERMALLY BROKEN ALUMINIUM SHOPFRONT WINDOW SYSTEM (KAWNEER OR SIMILAR APPROVED), FRAME COLOUR ANTHRACITE GREY RAL 7016. SYSTEM TO ACHIEVE A MIN U-VALUE OF 2.2W/M²K FOR ALL SOUTH, SOUTH-EAST AND SOUTH WEST FACING GLAZING, DEVELOPER TO CONSIDER SOLAR REFLECTIVE FILM.
 SCREENS TO RECEIVE STANDARD DOT MANIFESTATION AS INDICATED ON ELEVATIONS.
5. SERVICE DOOR
 FACTORY FINISHED POWDER COATED STEEL DOORS AND FRAMES- COLOUR RAL 7016 WITH RAL 7016 FRAMES
6. LOUVRES
 2No LOUVRES WITH INTERNAL INSECT MESH, FINISHED RAL 7035 LIGHT GREY



DRIVE THRU WINDOW DETAILS 1:25

MATERIAL DETAILS

COSTA 1800 SQ FT STANDARD BUILDING SECTIONS AND DETAILS (SIDE ENTRANCE)

1:25/100 @A3

B GENERAL UPDATE 05.05.17
 A DOOR POSITIONS UPDATED 04.03.16



DRAWING No
 1800(SIDE) - 04B