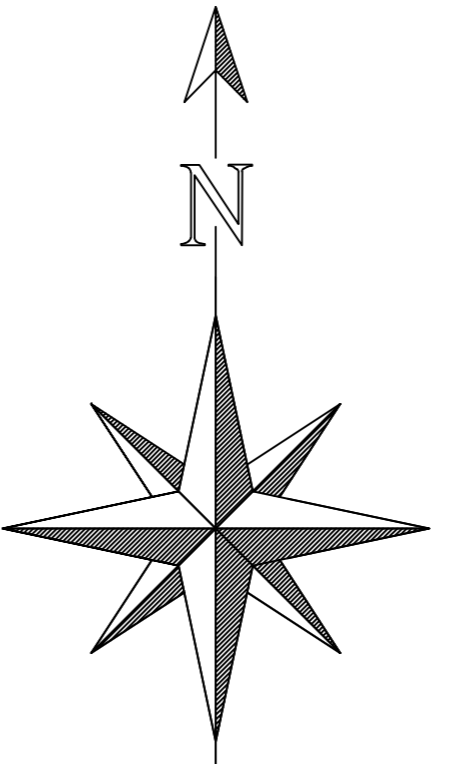


STN	EASTING	NORTHING	HEIGHT
2001	37298.782	42712.311	62.582
2002	37298.475	42712.311	62.582
2003	37298.782	42712.311	62.582
2004	37298.782	42712.311	62.582
2005	37298.782	42712.311	62.582
2006	37298.782	42712.311	62.582
2007	37298.782	42712.311	62.582
2008	37298.782	42712.311	62.582
2009	37298.782	42712.311	62.582
2010	37298.782	42712.311	62.582
2011	37298.782	42712.311	62.582
2012	37298.782	42712.311	62.582
2013	37298.782	42712.311	62.582
2014	37298.782	42712.311	62.582
2015	37298.782	42712.311	62.582
2016	37298.782	42712.311	62.582
2017	37298.782	42712.311	62.582
2018	37298.782	42712.311	62.582
2019	37298.782	42712.311	62.582
2020	37298.782	42712.311	62.582
2021	37298.782	42712.311	62.582
2022	37298.782	42712.311	62.582
2023	37298.782	42712.311	62.582
2024	37298.782	42712.311	62.582
2025	37298.782	42712.311	62.582
2026	37298.782	42712.311	62.582
2027	37298.782	42712.311	62.582
2028	37298.782	42712.311	62.582
2029	37298.782	42712.311	62.582
2030	37298.782	42712.311	62.582

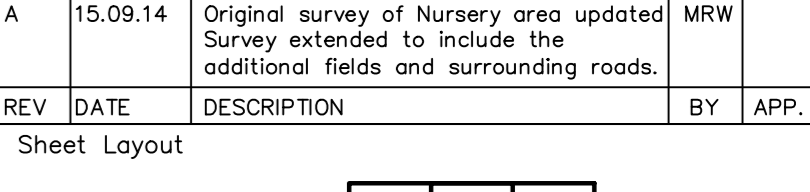


LEGEND

- CONTROL STATIONS
- MANHOLE
- BUSH
- TREE
- DROP KERB
- EMBANKMENT
- OVERHEAD ELECTRICITY LINE
- OVERHEAD TELEPHONE LINE
- FOOTPATH
- FENCE
- HEDGE
- FOLIAGE
- DITCH
- VERGE
- EXISTING BUILDING
- MAIN CONTOUR
- CONTOUR
- SW SEWER
- FW SEWER
- AV Air Valve
- BN Bench
- BD Bolard
- BS Bench Mark
- BS Bus Stop
- BT Inspection Chamber
- BL Bed Level
- CLV Cable TV Cover
- CLV Cover Level
- CP Catch Pit
- CP Concrete Paving Slab
- ECB Electricity Control Box
- DI Building Level
- ER Earthing Rod
- FR Floor Level
- FL Fire Hydrant
- GH Greenhouse
- GP Gate Post
- GR Drive
- GV Gate Valve
- G Gully
- IC Inspection Chamber
- IL Invert Level
- KD Keros Outlet
- JB Junction Box
- LP Long Post
- MC Man Hole
- MP Meter Post
- MS Man Stone Marker
- NS Street Name Plate
- NS Junction
- NS Post Box
- NS Post
- NS Post Box
- NS Pipe
- NS Plumbing Meter
- NS Post & Rail Fence
- NS Post & Wire Fence
- NS Electric Pylon
- NS Roofing Line
- NS Building Ridge Level
- NS Reinforced Concrete
- NS Retaining Wall
- NS Retaining Pole
- NS Stop Cock
- NS Soil Level
- NS Sign Post
- NS Shop Top
- NS Stop Valve
- NS Street Valve
- NS Tackle Crossing
- NS Top Of Wall Level
- NS Traffic Light
- NS Trial Hole
- NS Telegraph Pole
- NS Unusable Lift
- NS Water Meter
- NS Water Level
- NS Building Valley Level

Disclaimer
 Man Entry to sewers has not been undertaken. Depths, fissures etc are measured from the ground. All sewers and inverts to be checked prior to any works commencing on site. Geomatic Surveys Limited are not responsible for manholes, services, information not surveyed which may have an impact on site development.
 Boundaries shown are physical and may not represent legally conveyed ownership.
 Tree species have only been identified using basic identification techniques. For precise tree species identification, it is recommended that a qualified arboriculturist is used prior to tree removal.

REV	DATE	DESCRIPTION	BY	APP.
A	15.09.14	Original survey of Nursery area updated. Survey extended to include the additional fields and surrounding roads.	MRW	



Survey Information
 The Survey is related to Ordnance Survey National Grid and Datum, using GPS. A central location for OSNG Grid is Survey Station 2002. The Scale Factor is 1.0000000.

Geomatic Surveys Ltd
 LAND SURVEYORS AND CONSULTING ENGINEERS
 Bank House, The Paddock
 Winslow Road
 Handforth
 Cheshire
 SK9 3NQ
 Tel/Fax: - 01625 521405
 Email: info@geomaticsurveys.co.uk
 Web: www.geomaticsurveys.co.uk

Client
MAPLE GROVE DEVELOPMENTS LTD
 Project Title
'OLD WHALLEY NURSERIES' CLITHEROE ROAD WHALLEY

Drawing Title
TOPOGRAPHICAL SURVEY

Drawn	Checked	IRH	Surveyed Date
JS	IRH		13/06/2014
Date	Scale	Sheet No.	Sheet 3 of 3
16/06/2014	1:500 @ A0		
Dwg No.	01153/01		

Copyright © Geomatic Surveys Limited 2014