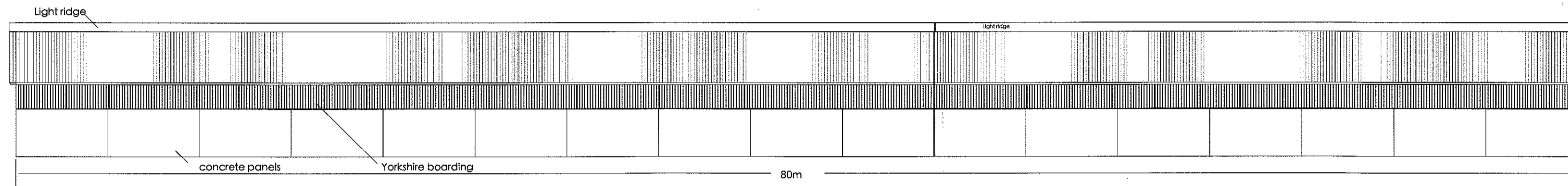
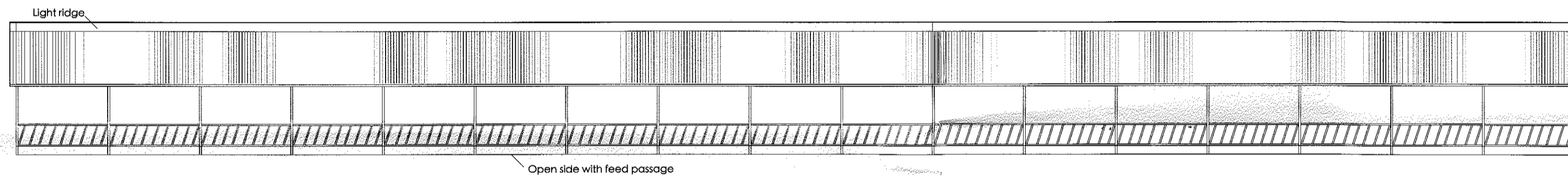


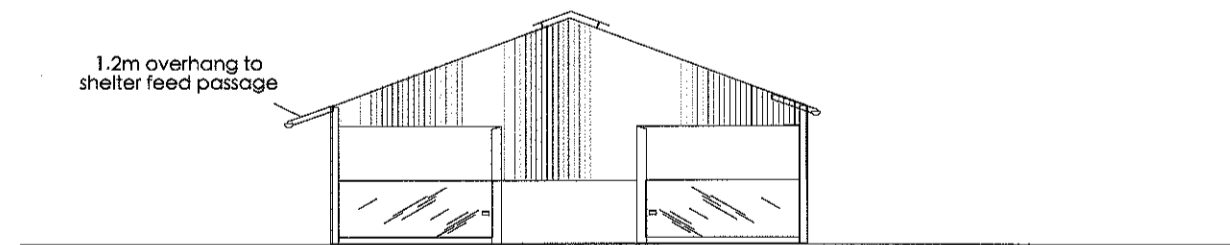
Proposed new cow housing at Lower Alston Farm, Riverside, Ribchester, Nr Preston. PR3 3XS



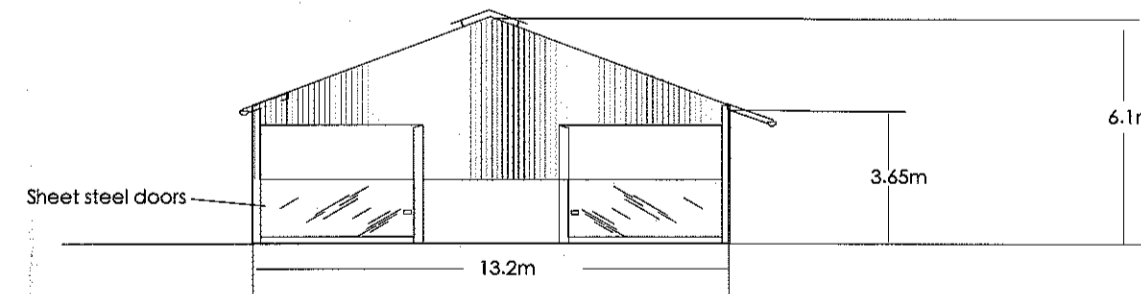
East elevation



West elevation



North elevation



South elevation

320190584P

**Materials**

| East elevation                         | West elevation                   | North elevation  | South elevation  | Roof                          |
|--|----------------------------------|--|--|-------------------------------|
| Concrete panels and Yorkshire boarding | Open with box metal feed barrier | Steel Doors, plastic coated steel sheeting (dk green), concrete panels | Steel Doors, plastic coated steel sheeting (dk green), concrete panels | Fibre cement with light ridge |

Scale: 1:200