

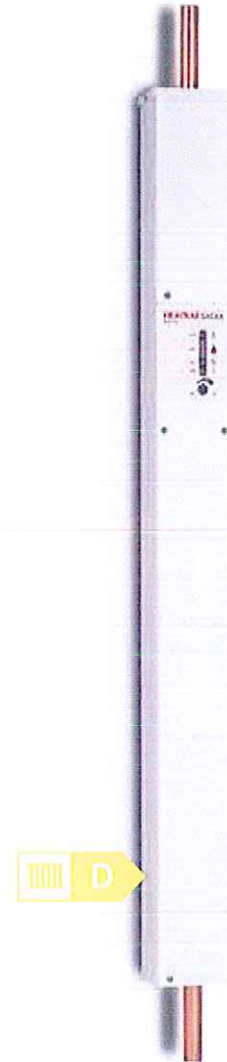
DATA SHEET

Amptec

ELECTRIC FLOW BOILER

Amptec electric flow boiler provides hot water to your wet central heating system. Amptec is suitable for pressurised or open vented systems and with no flue or heat wasted up the chimney, Amptec is 99.8% efficient.

Compact and unobtrusive, Amptec works with standard radiators, programmers, circulating pumps, room thermostats and thermostatic radiator valves, to heat water for radiator or underfloor heating systems. Amptec is available in a range of kW sizes and is ideal for extensions, loft conversions, conservatories, flats, apartments and garages where space is at a premium.



4-12
kW

RATING
OPTIONS

30-
80°C

TEMPERATURE
ADJUSTABLE

90
mm sq
footprint

COMPACT
UNIT

99.8
%

BOILER
EFFICIENCY

FEATURES

Underfloor and radiator boiler models available

4kW to 12kW range available

99.8% boiler efficiency

Compatible with standard radiators

90mm sq footprint

No flues required

BENEFITS

Flexibility of heating system specified

KW ratings satisfy a wide range of property sizes

High energy efficiency

Flexibility of siting

Compact unit

No annual gas checks of flues

Amptec

ELECTRIC FLOW BOILER

TECHNICAL SPECIFICATION

Model	4KW RADIATOR	6KW RADIATOR	9KW RADIATOR	11KW RADIATOR	12KW RADIATOR
Product code	95:022:001	95:022:002	95:022:003	95:022:004	95:022:005
Electrical input max	4kW @ 240V 3.7kW @ 230V	6kW @ 240V 5.5kW @ 230V	9kW @ 240V 8.3kW @ 230V	11kW @ 240V 10.1kW @ 230V	12kW @ 240V 11kW @ 230V
Electrical supply voltage (V)	220-240	220-240	220-240	220-240	220-240
Electrical supply frequency (Hz)	50	50	50	50	50
220W/Btu	3.5kW/11,900	5kW/17,000	7.5kW/25,600	9kW/30,700	10kW/34,000
240W/Btu	4kW/13,600	6kW/20,400B	9kW/30,700	11kW/37,500	12kW/40,900
Over temperature trips (°C)	95 and 100	95 and 100	95 and 100	95 and 100	95 and 100
Water content (litres)	1.3	1.3	1.3	1.3	1.3
Recommended Δt across boiler (°C)	5-10	5-10	5-10	5-10	5-10
Maximum operating pressure (bar)	3	3	3	3	3
Output temperature control range (°C)	65 to 80	65 to 80	65 to 80	65 to 80	65 to 80
Minimum flow rate (l/min)	6	6	12	12	12

* Please note, 50mm minimum clearance each side of the boiler is required.

ERP TECHNICAL DATA

ErP rating	D	D	D	D	D
Rated heat output (kW)	4	6	9	11	12
Seasonal space heating energy efficiency (%)	37	37	37	37	37
Annual energy consumption (kWh)	8661	12986	19472	23796	25958

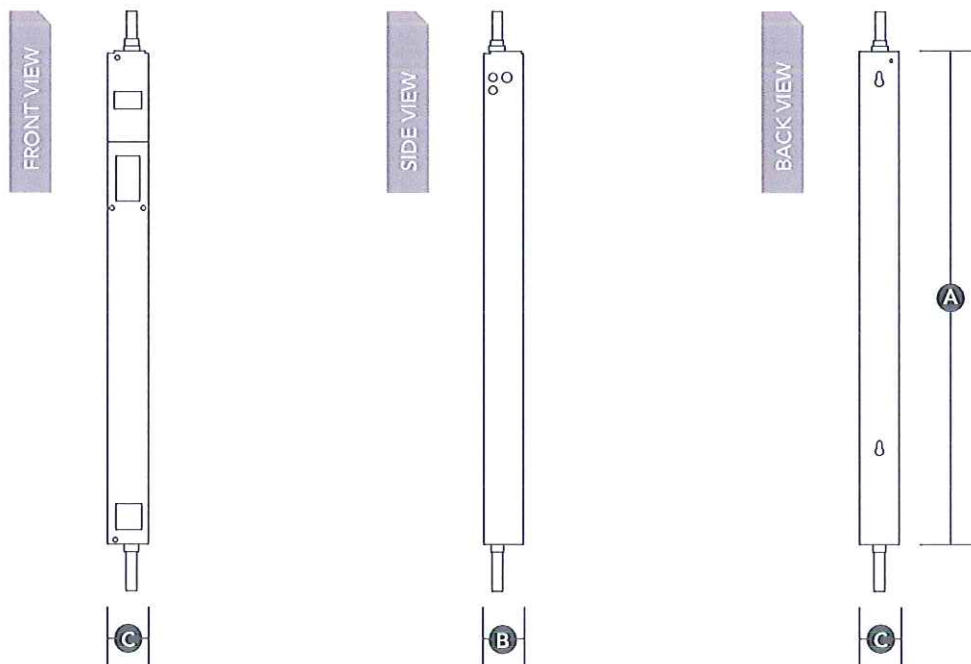
ACCESSORIES

Relay RL1	95.970.134
Relay RL2	95.970.135
Relay RL3	95.970.136

	4KW UNDERFLOOR	6KW UNDERFLOOR	9KW UNDERFLOOR	11KW UNDERFLOOR	12KW UNDERFLOOR
	95:022:101	95:022:102	95:022:103	95:022:104	95:022:105
	4kW @ 240V 3.7kW @ 230V	6kW @ 240V 5.5kW @ 230V	9kW @ 240V 8.3kW @ 230V	11kW @ 240V 10.1kW @ 230V	12kW @ 240V 11kW @ 230V
	220-240	220-240	220-240	220-240	220-240
	50	50	50	50	50
	3.5kW/11,900	5kW/17,000	7.5kW/25,600	9kW/30,700	10kW/34,000
	4kW/13,600	6kW/20,400	9kW/30,700	11kW/37,500	12kW/40,900
	95 and 100	95 and 100	95 and 100	95 and 100	95 and 100
	1.3	1.3	1.3	1.3	1.3
	5-10	5-10	5-10	5-10	5-10
	3	3	3	3	3
	30 to 60	30 to 60	30 to 60	30 to 60	30 to 60
	6	6	12	12	12
	D	D	D	D	D
	4	6	9	11	12
	37	37	37	37	37

DIMENSIONS

Model	4KW RADIATOR/ 4KW UNDERFLOOR	6KW RADIATOR/ 6KW UNDERFLOOR	9KW RADIATOR/ 9KW UNDERFLOOR	11KW RADIATOR/ 11KW UNDERFLOOR	12KW RADIATOR/ 12KW UNDERFLOOR
A Overall Height (mm)	1050	1050	1050	1050	1050
B Depth (mm)	90	90	90	90	90
C Width (mm)	90	90	90	90	90





CODES OF PRACTICE/LEGISLATION

EU Directives:

- Energy Labelling of Water Heaters Directive 2010/30/EU
- Eco Design for Water Heaters Directive 2009/125/EU
- Low Voltage Directive (LVD) 2014/30/EU
- Electromagnetic Compatibility (EMC) Directive 2014/35/EU

Legislation:

- Building Regulations Part G and Part L (England and Wales)
- Scottish Building Standards Section 4 and Section 6
- Building Regulations (Northern Ireland) Parts F1 and F3 and Part P
- Water Supply (Water Fittings) Regulations (England and Wales)
- The Water Byelaws 2004 (Scotland)
- Water Supply (Water Fittings) Regulations (Northern Ireland)

Standards:

Relevant clauses of the following standards are complied with:

- EN 12828 Heating systems in buildings. Design for water-based heating systems.
- EN 12831 Heating systems in buildings. Method for calculation of the design heat load.
- EN 14336 Heating systems in buildings. Installation and commissioning of water based heating systems
- BS7671 Requirements for electrical installations. IEE Wiring Regulations

Components supplied comply with the following standards:

- BS EN 60730-1 Automatic Electrical Controls – For households and similar use part 1: General Requirements

The use of these water heaters will aid in compliance with:

- BS 8558 Guide to the design, installation, testing and maintenance of services supplying water for domestic use within buildings

Manufactured in a factory approved to:

- BS EN ISO 9001
- OHSAS 18001
- ISO 14001

Approvals:

- Nemko (N-Mark) Certification Number: P12215619



For more information
01603 420220 | enquiries@heatraesadia.com
www.heatraesadia.com



Please recycle this product once you have finished with it.

Issue 1
© Heatrae Sadia 2016

Heatrae Sadia, Hurricane Way, Norfolk, NR6 6EA

Heatrae Sadia may introduce modifications to their products from time to time. Consequentially the details given in this data sheet are subject to alteration without notice.