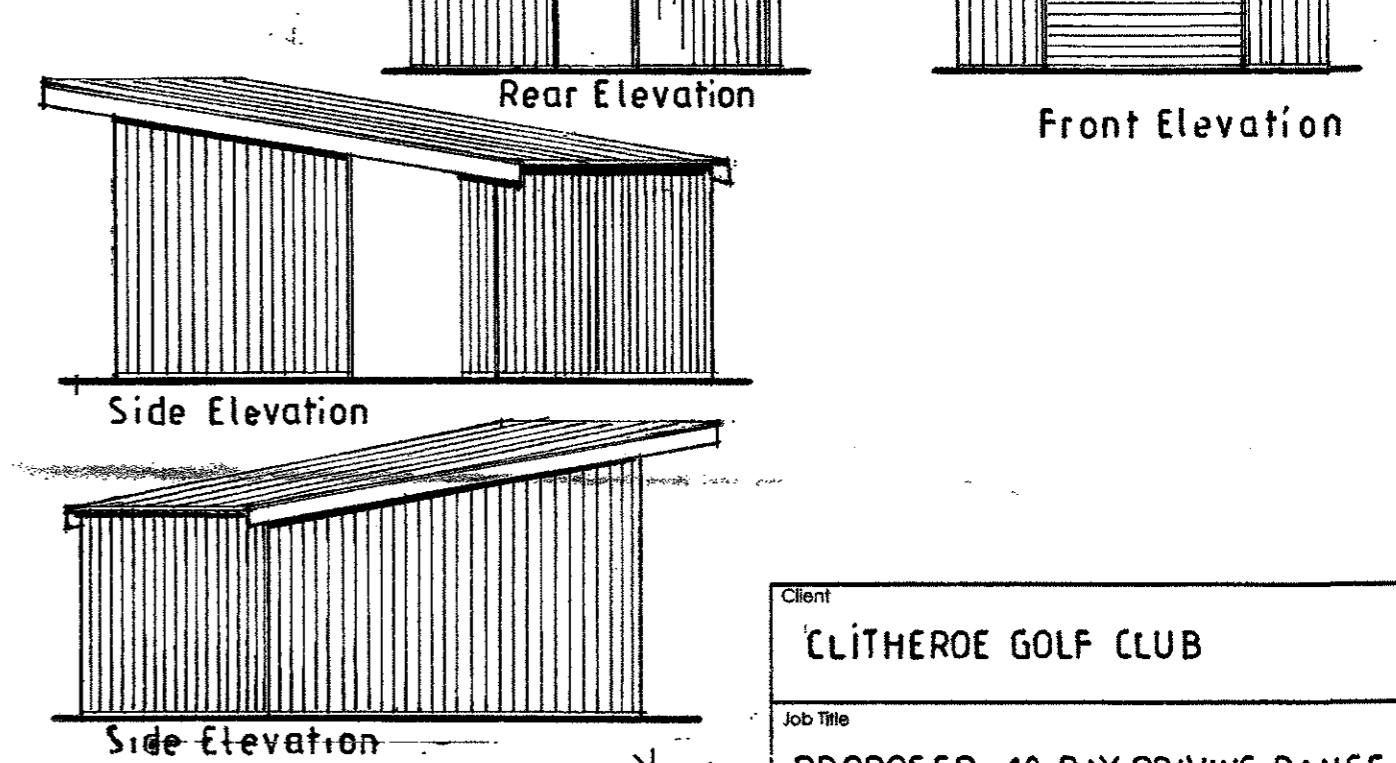
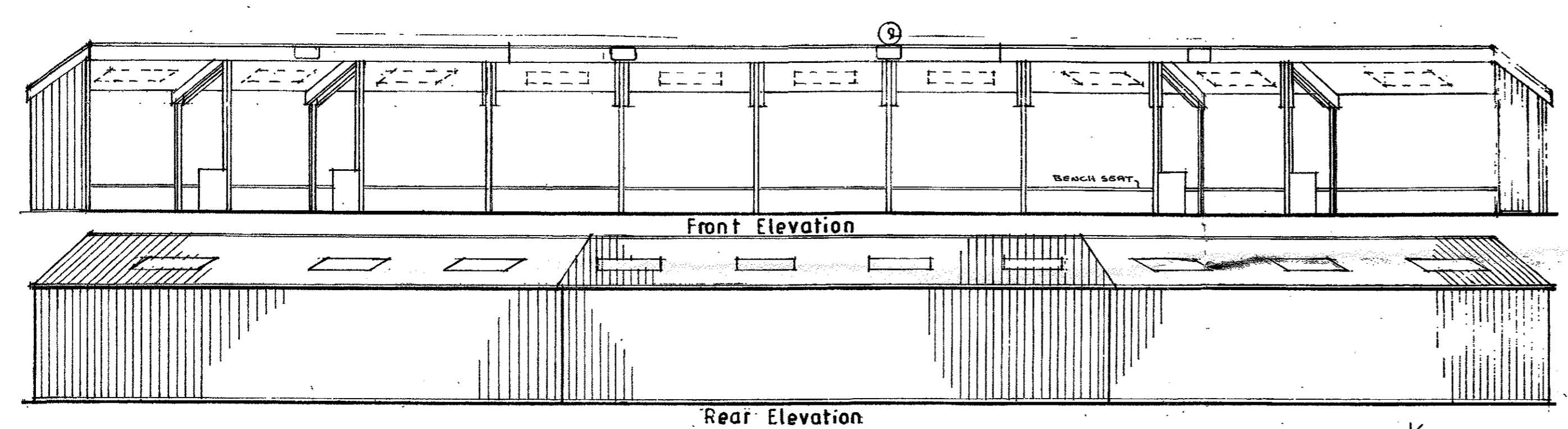
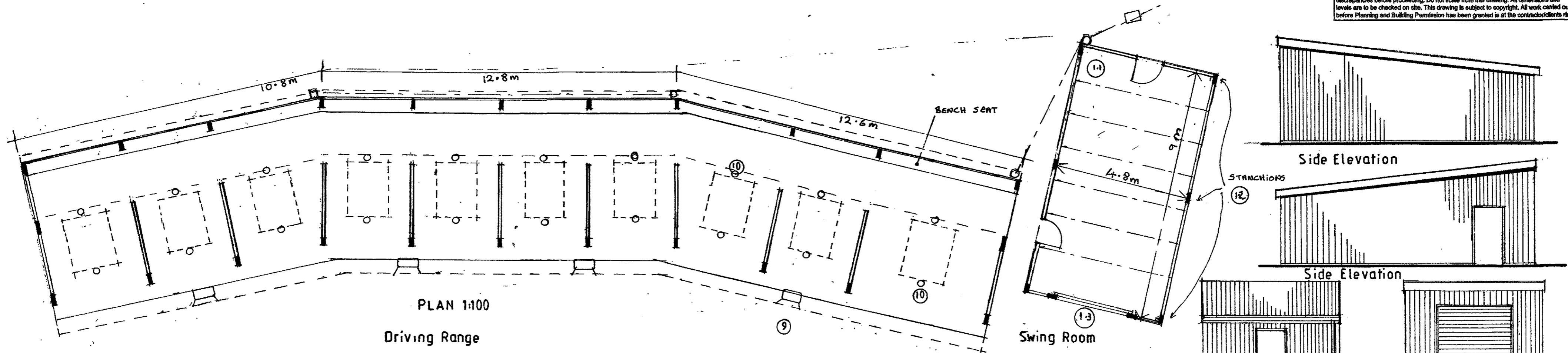
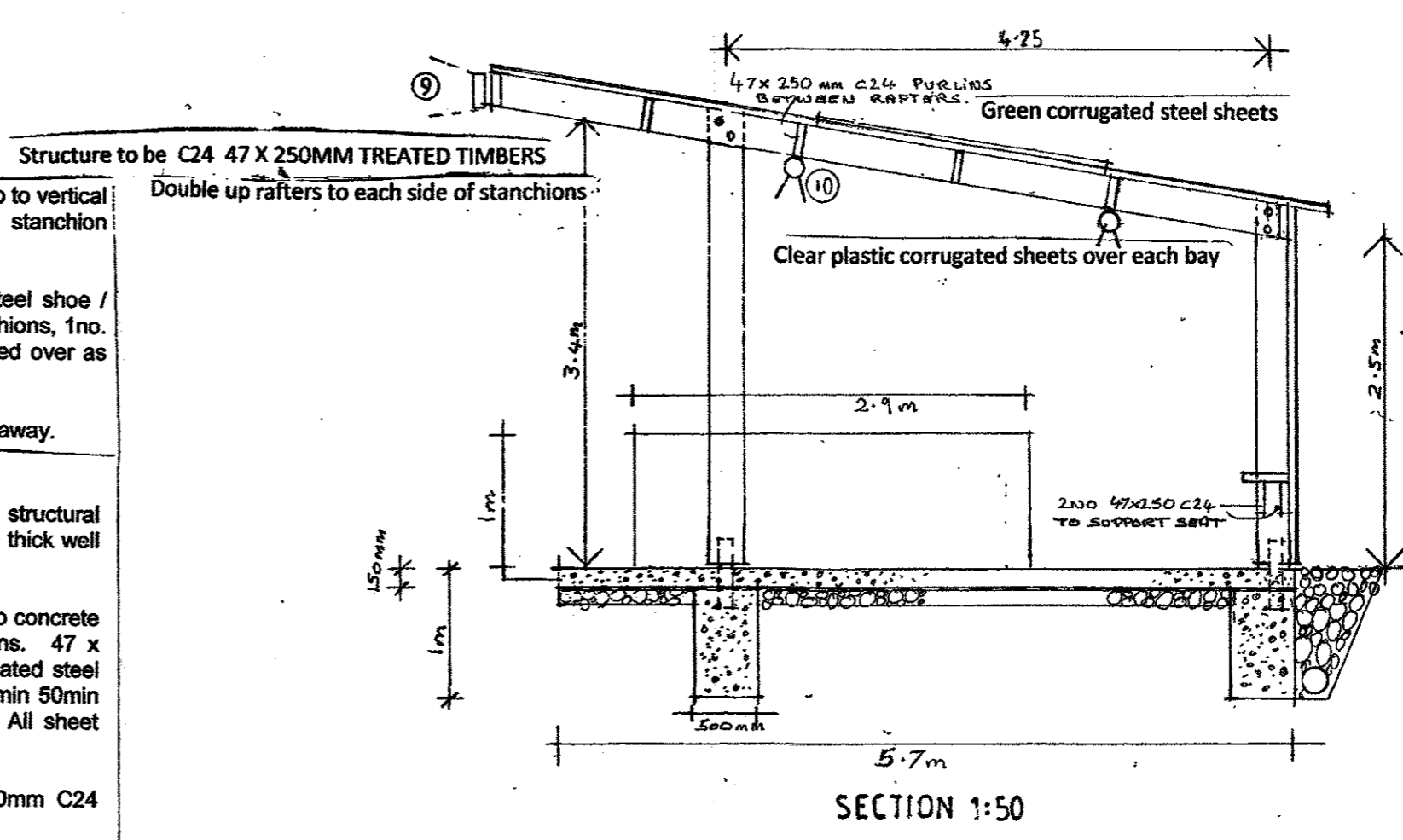


This drawing is to be read in conjunction with all relevant Architect, consultants' and specialists' drawings and specifications. The Architect is to be notified of any discrepancies before proceeding. Do not scale from this drawing. All dimensions and levels are to be checked on site. This drawing is subject to copyright. All work carried out before Planning and Building Permission has been granted is at the contractor's risk.



1. Reinforced concrete base 175mm thick with movement joints to structural engineer's detail. 1200 gauge DPC over sand blinded min 150mm thick well consolidated hardcore. (Actual depth to be determined on site subject to ground conditions).
2. P.c. concrete pad foundations to timber stanchions, provisional size to be 500mm sq, 750mm deep, to structural engineer's approval.
3. French drain to rear wall. Perforated land drain wrapped in geotextile at base of foundation. Granular fill up to ground level. Drain to discharge into existing Surface water system.
4. Timber frame constructed out of 47 x 250mm C24 treated timber stanchions fixed at the base with stainless steel shoe / brackets, bolts and plate with tie bars bedded in concrete pad foundation. 1no. rafter (47 x 250 mm) to be bolted to each side of stanchions. 47 x 250mm purlins between rafters at 1200 ctrs. (Rear eaves purlin fixed vertically).
5. 50 x 300mm timber bench seat fixed between stanchions at approx. 700mm above ground level. 1no beam (47 x 250mm C24) fixed vertically between stanchions to the back edge and 1 no. to the front edge. Seat screw fixed over the 2no. beams.
6. Green corrugated steel sheet screw fixed over roof timbers and proprietary trim fixed to front and side edges. Sealed at sheet abutments. Sections of clear plastic approx. 2 x 1.5m over each bay, sealed to steel sheets.
7. Partition walls between bays fixed to front stanchions 2.9m long x 1m high, formed in 50 x 75mm C16 treated timber studs at 400mm ctrs. 18mm wbp fixed to each side. Partitions to be wrapped with treated s/w vertical T&G boarding ex. 100 x 25mm
8. LED sports floodlights by specialist manufacturer. Provisional positions shown.
9. 2no LED downlighters fixed to purlins over each bay.

10. Rear walls formed with corrugated steel sheet screw fixed at the top to vertical purlin between stanchions and beam fixed to back edge of stanchion supporting seat.
 11. Gable walls to have stanchion in positions shown in stainless steel shoe / bracket off foundation as before. 2no. beams fixed between stanchions, 1no. at min 50mm above floor slab and 1no. at 2.4m. Steel sheet fixed over as before.
 12. Rainwater gutter to discharge into new land drain and existing soakaway.
- Swing Room**
- 13.1 Reinforced concrete base 175mm thick with movement joints to structural engineer's detail. 1200 gauge DPC over sand blinded min 150mm thick well consolidated hardcore.
 - 13.2 Treated 47 x 250mm C24 timber frame built up off and fixed down to concrete base. Rafters doubled up and bolted to either side of stanchions. 47 x 250mm C24 purlins between at 1200mm max ctrs. Green corrugated steel sheet wall cladding screw fixed at the eaves to beam and beam min 50mm above floor level. Roof cladding fixed over rafters and purlins. All sheet abutments to be sealed.
 - 13.3 Roller shutter door fixed to structural frame formed in 47 x 250mm C24 timbers.
 - 13.4 Rainwater gutter to discharge into new land drain.
 - 13.5 French drain to rear wall. Perforated land drain wrapped in geo textile at base of foundation. Granular fill up to ground level. Drain to discharge into existing Surface water system



Client
CLITHEROE GOLF CLUB

Job Title
**PROPOSED 10 BAY DRIVING RANGE
CLITHEROE GOLF CLUB
CLITHEROE**

320190653

Drawing Title
PROPOSED PLAN AND ELEVATIONS

Scale 1:100 1:50 Date April 19 Drawn LKR

spa
SUNDERLAND PEACOCK ARCHITECTS
SUNDERLAND PEACOCK & ASSOCIATES LTD.
HAZELBERE, PIMI 100 ROAD, CLITHEROE
LANCASHIRE, BB7 2AG
T 01204 425776 F 01204 427328
E info@sunderlandpeacock.com
www.sunderlandpeacock.com

5825 - 1