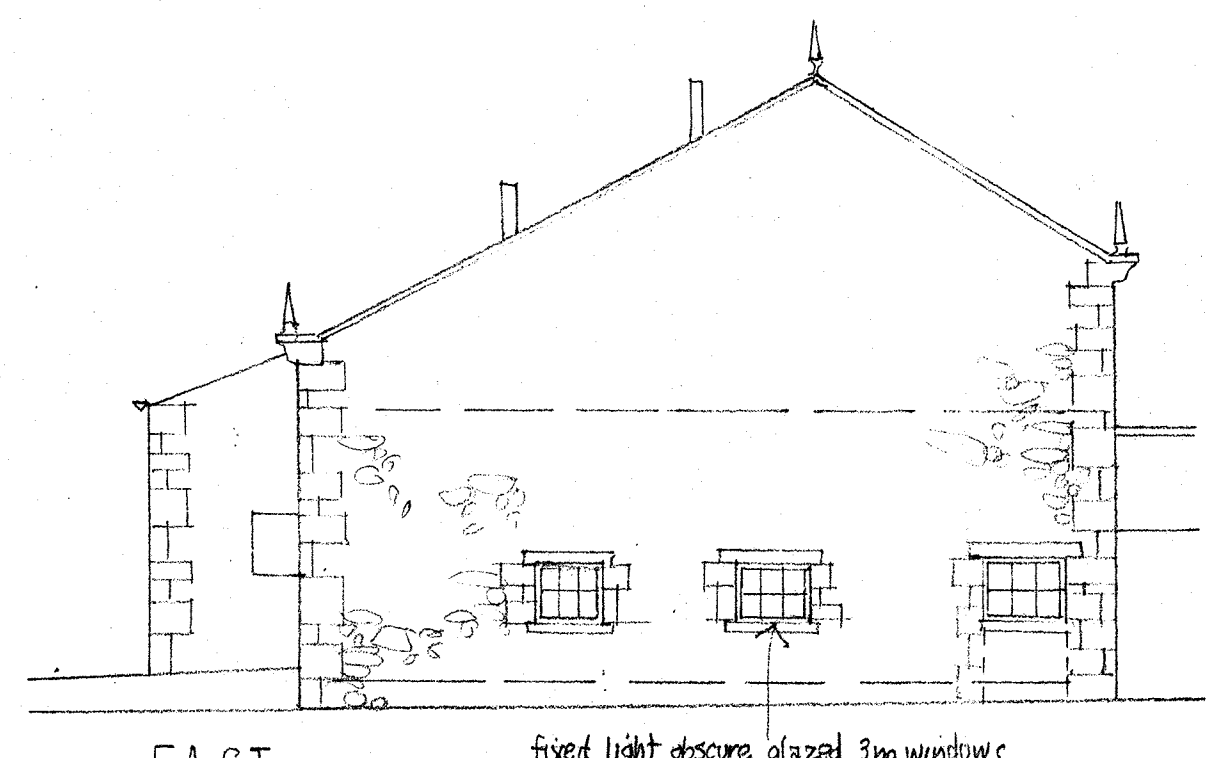
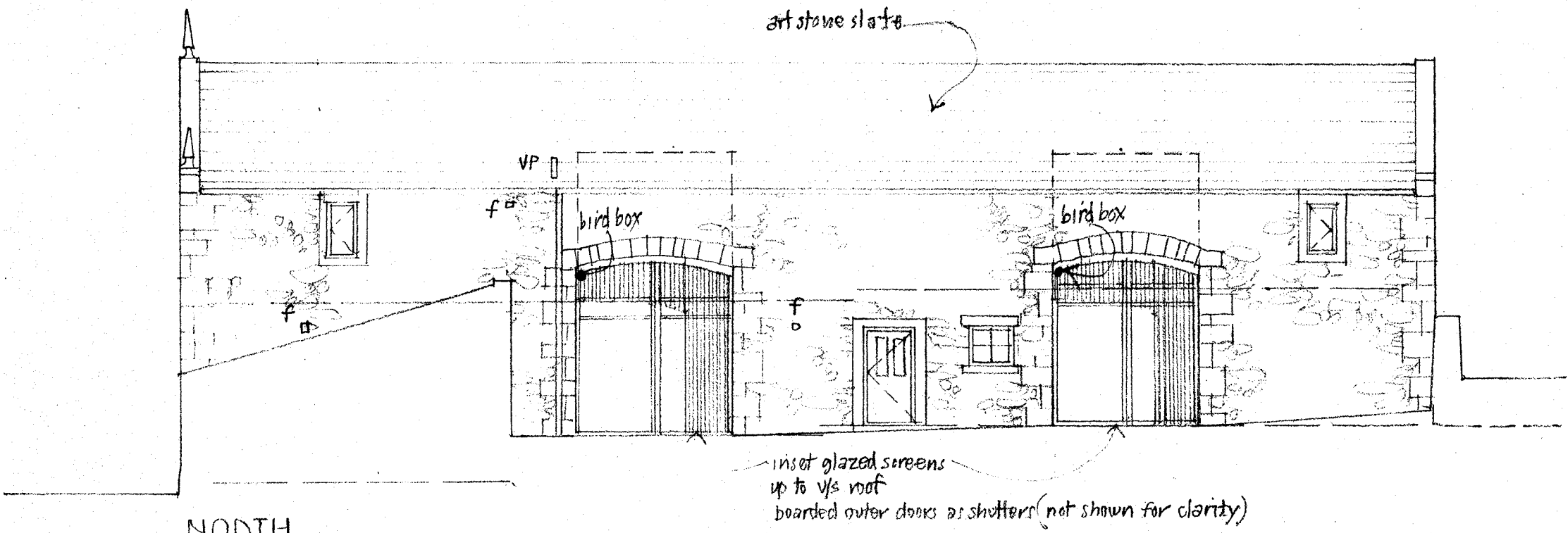


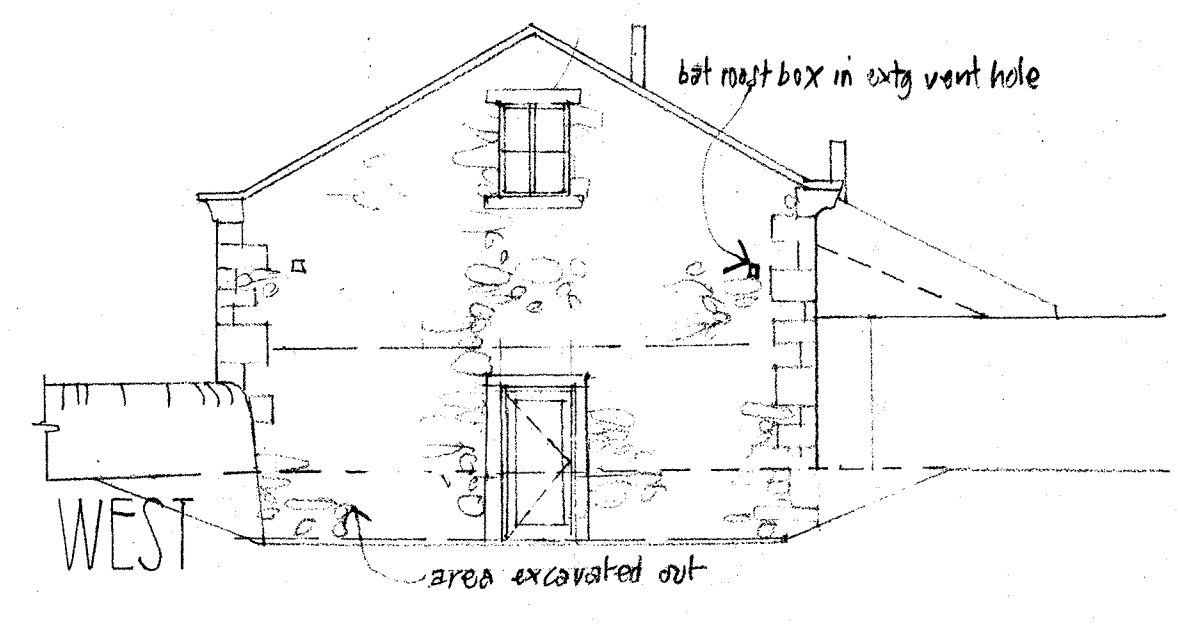
SOUTH



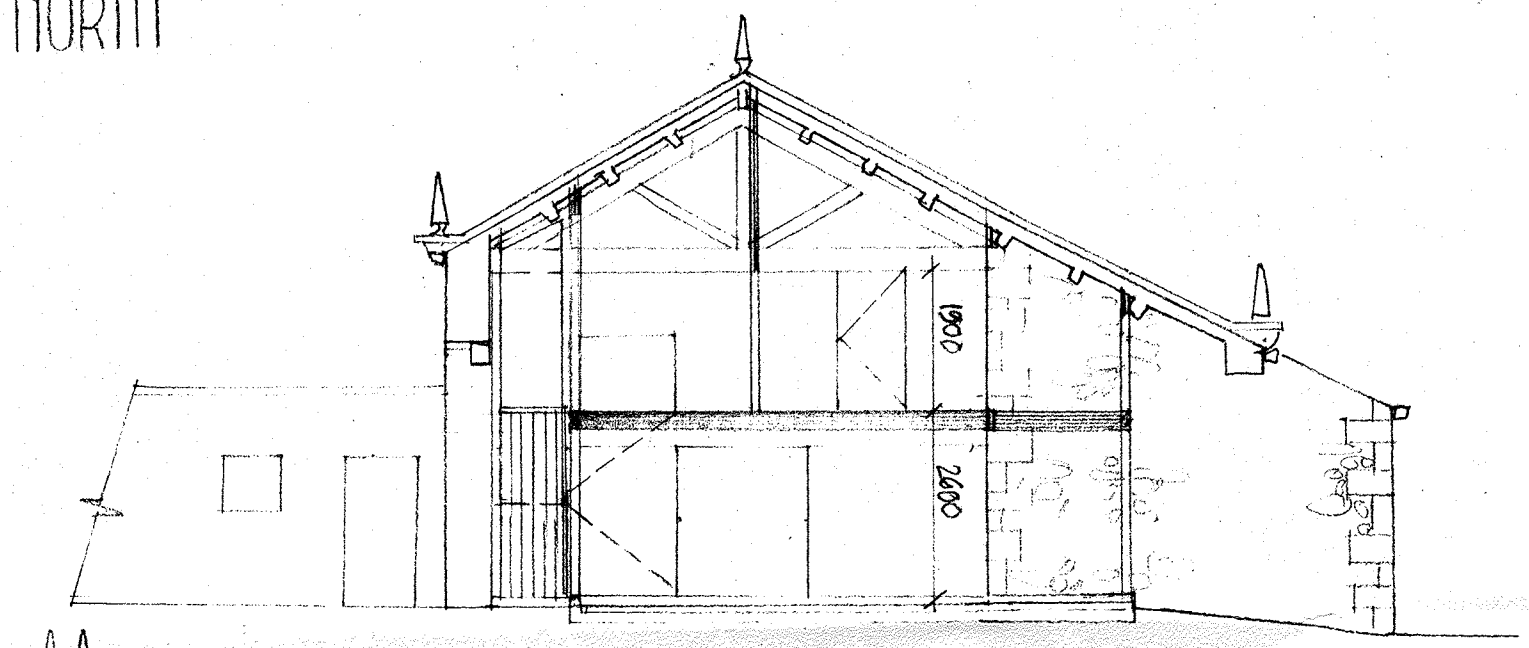
EAST



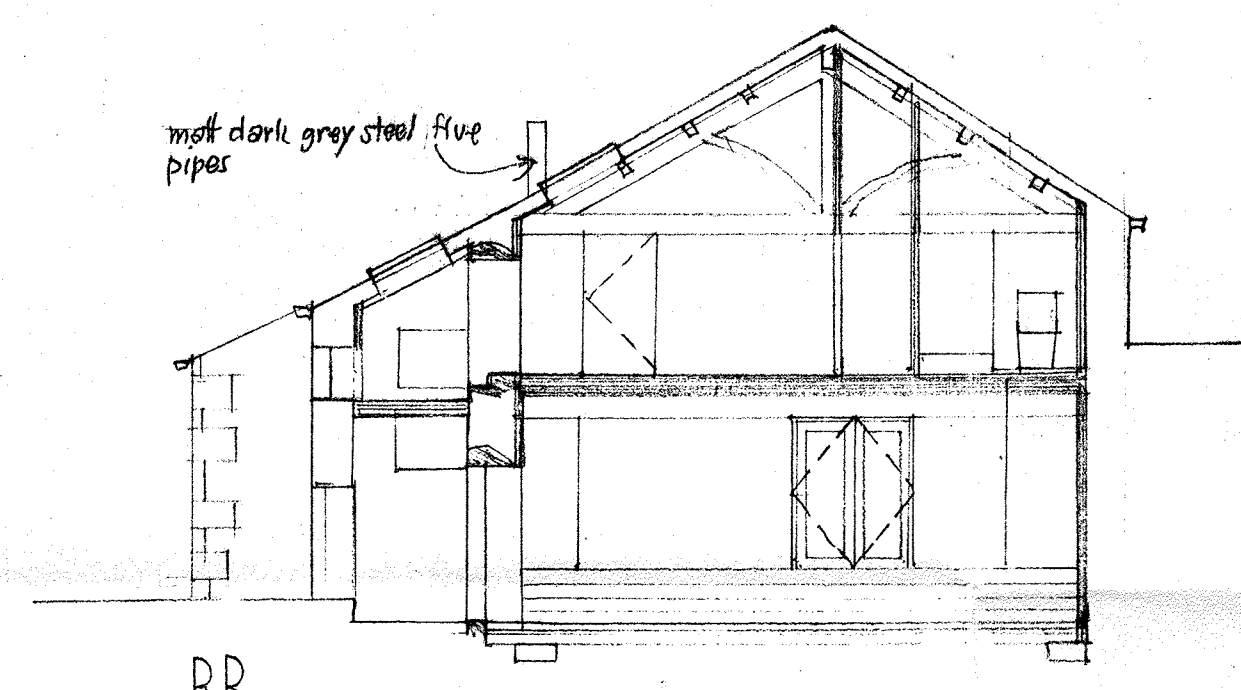
NORTH



WEST



AA



BB



BB7 4RL
LOCATION 1:2500
SITE/ROOF 1:500

site boundary to 'peck' lines

new LARGESTIX sewage treatment plant to BS 6297 out fall to ex drain

320190765?

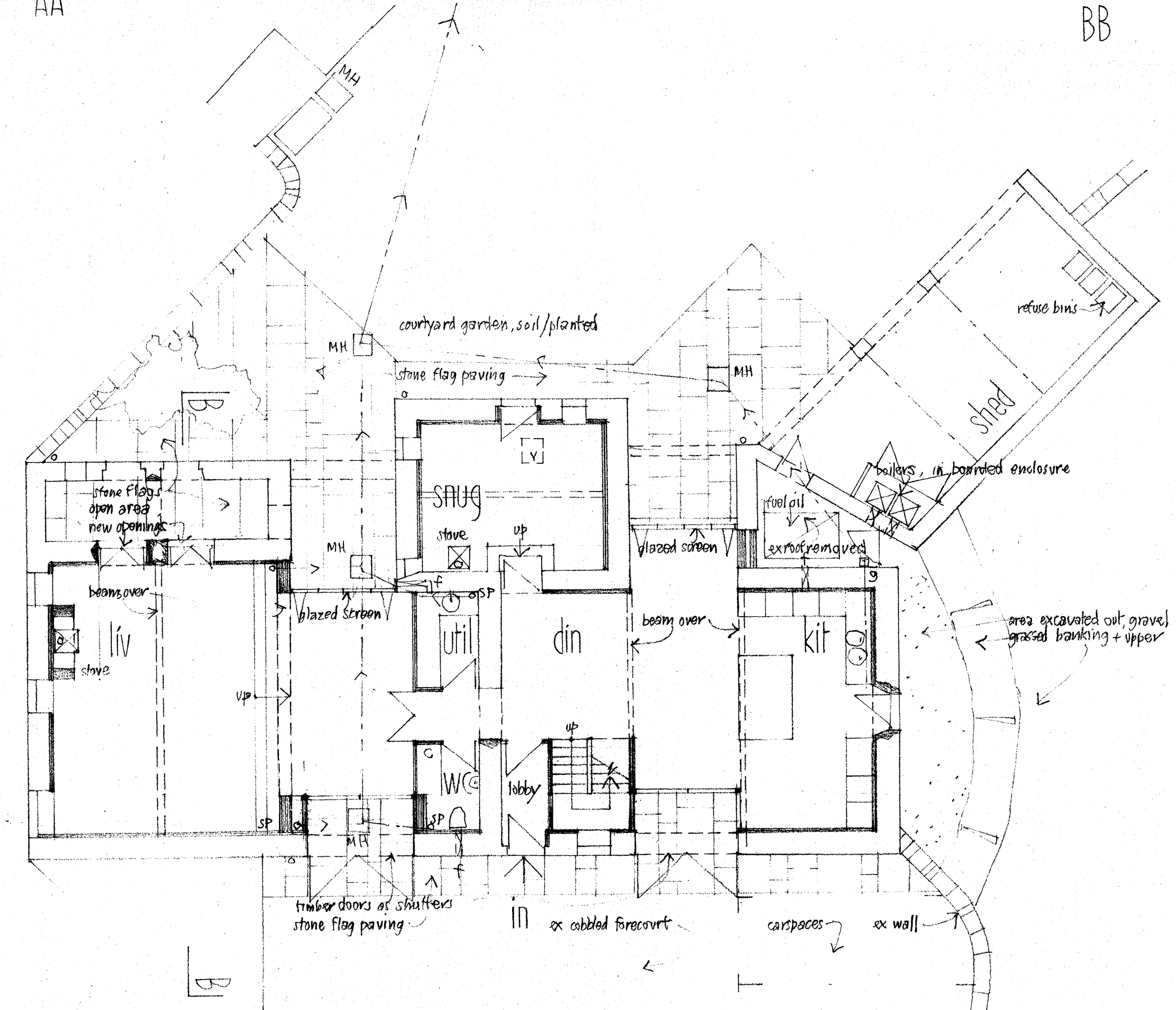
exterior materials:
roof - north art stone slate GREYS
south art stone slate GREYS
walls - ex stone repointed cement/lime/sand/gut mix brushed off
rw good - edge section black aluminium, black PVC rwp's
windows + doors - Heritage colour painted timbers, min inset 150mm from outside

rev 'A' 4-4-19 bed 1 + 5 windows revised + west gable
gravel area noted outside kitchen gate door
rev 'B' 10-6-19 ground surfaces added to site plan
rev 'C' 12-8-19 bat/bird roost boxes added to elevations + plans

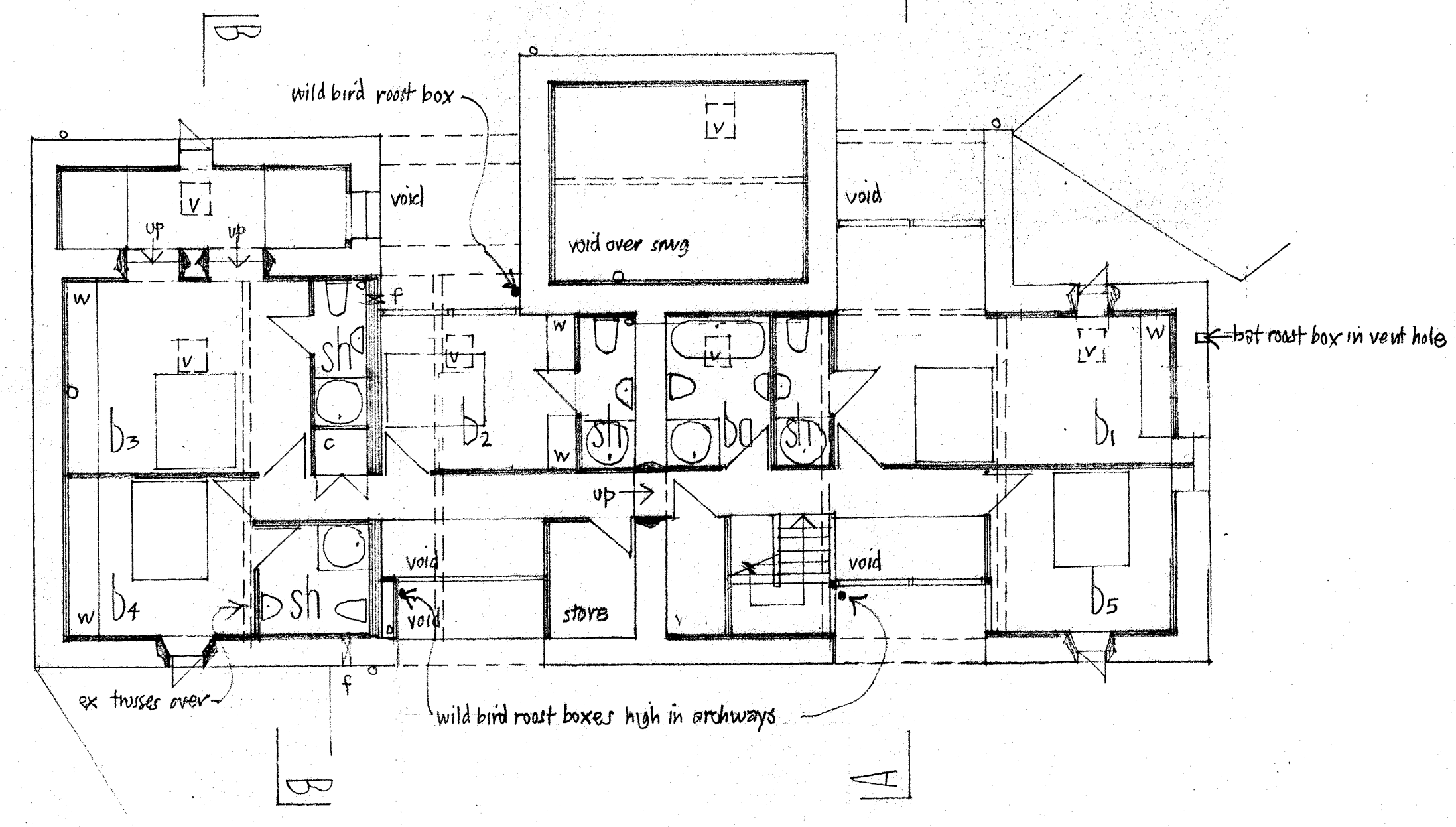
PROPOSED
GREENBANKS BARN
GRINDLETON
scale 1:100 April 2018



OHN & JENNIFER WHARTON : ARCHITECT DESIGNERS
Craven House
Brook View
Carleton
SKIPTON
North Yorkshire BD23 3EX tel 01756 792708



GROUND



FIRST

2780-2