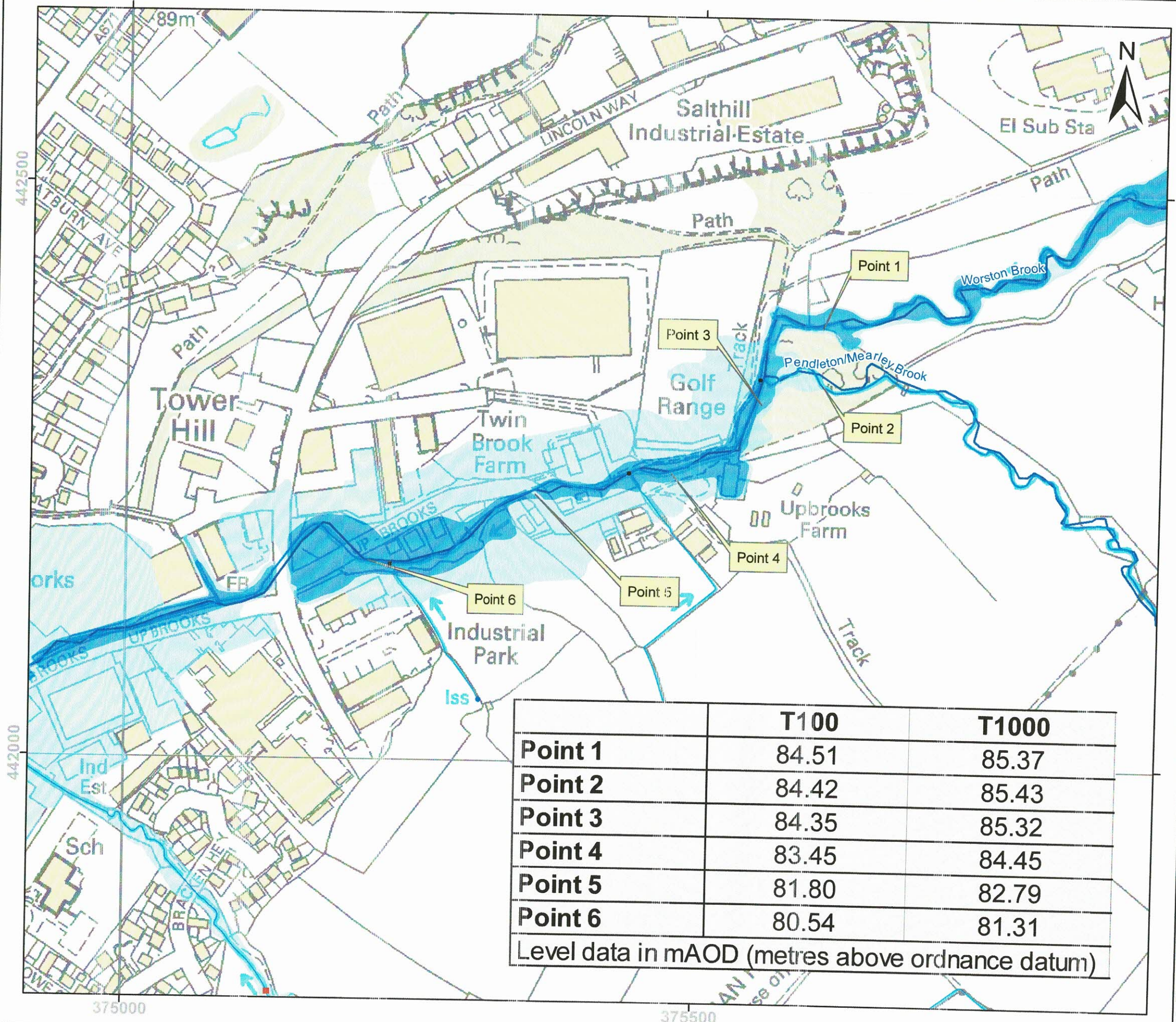


Projection = OSGB36
xmin = 374600
ymin = 441900
xmax = 375800
ymax = 442400
Map produced by MAGIC on 16 March, 2018.
Copyright resides with the data suppliers and the map must not be reproduced without their permission. Some information in MAGIC is a snapshot of the information that is being maintained or continually updated by the originating organisation. Please refer to the metadata for details as information may be illustrative or representative rather than definitive at this stage.



	T100	T1000
Point 1	84.51	85.37
Point 2	84.42	85.43
Point 3	84.35	85.32
Point 4	83.45	84.45
Point 5	81.80	82.79
Point 6	80.54	81.31
Level data in mAOD (metres above ordnance datum)		



Fluvial Flood Level Map: Mearley Brook/ Worston Brook, Clitheroe

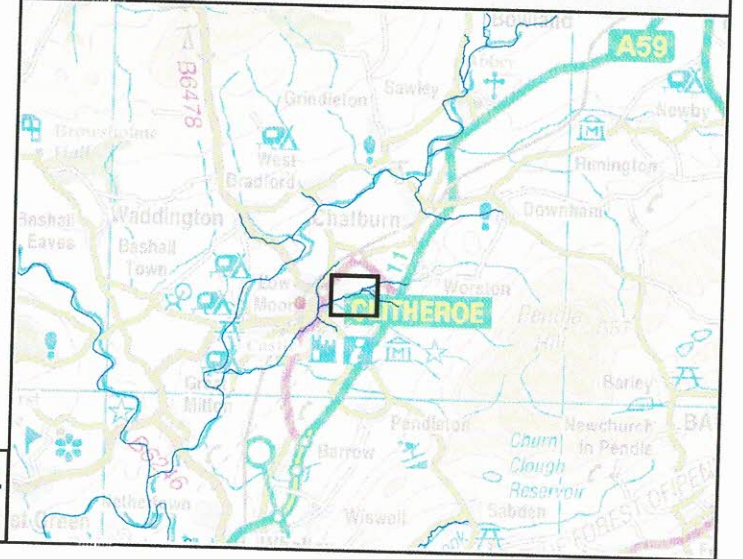
Produced: 14 November 2014
 Our Ref: CL3390
 NGR: SD 75413, 42227

- Key**
- Main River
 - Historic Flooding
 - Areas Benefitting from Defences
 - Flood Zone 3
 - Flood Zone 2

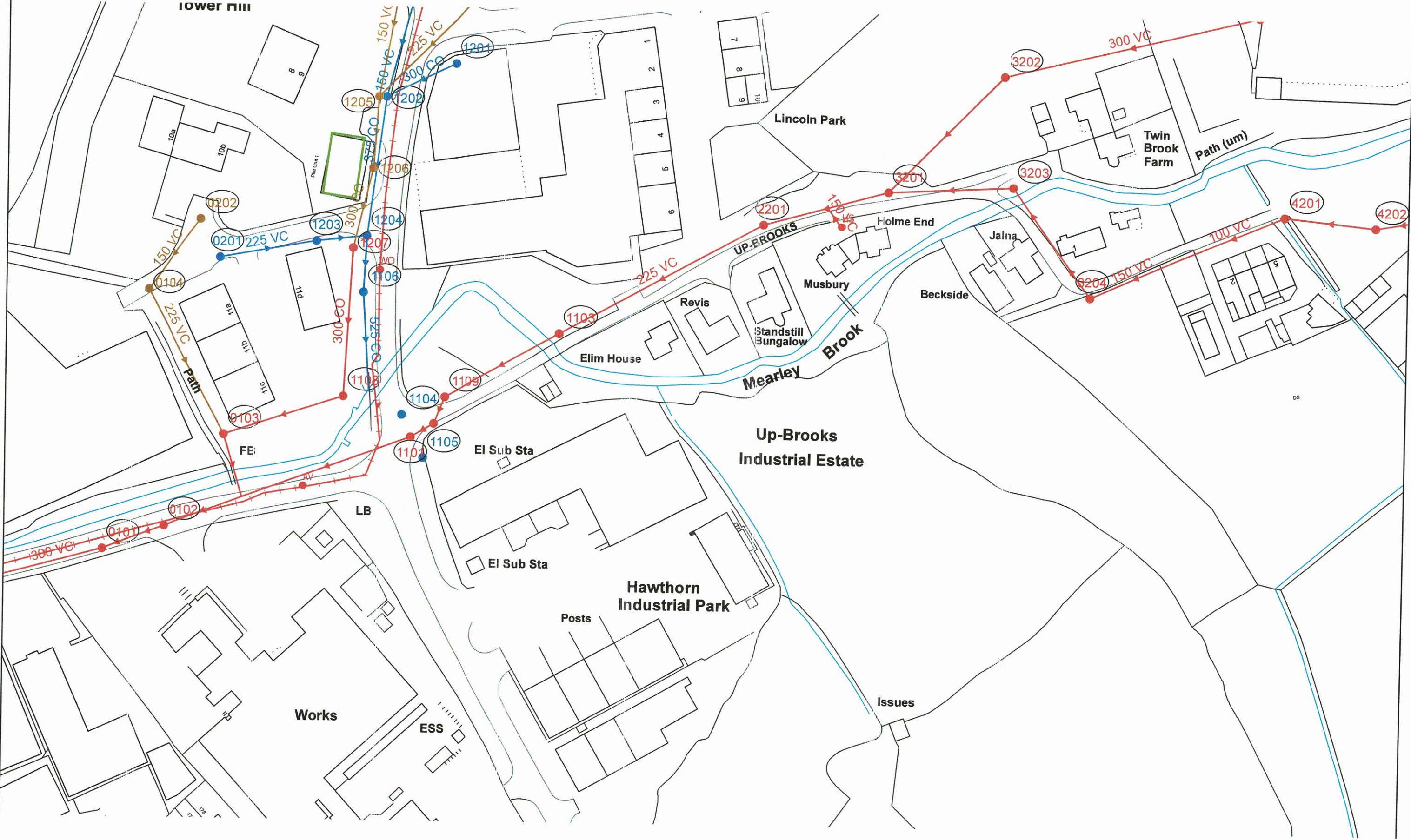
Flood Zone 3 shows the area that could be affected by flooding:
 - from the sea with a 1 in 200 or greater chance of happening each year
 - or from a river with a 1 in 100 or greater chance of happening each year.

Flood Zone 2 shows the extent of an extreme flood from rivers or the sea with up to a 1 in 1000 chance of occurring each year.

ABDs (Areas Benefitting from Defences) show the area benefiting from defences during a 1 in 200 tidal, or 1 in 100 fluvial flood event.



lower mill



430
010
220
320
420
010
220
110
240

A
-
-
-
-

CA	CA	NRV	ES	FI	GU	HA	HS	HY	AI	IC	II	CA	CA	WW Pumping Station
Cascade	Cascade	Non Return Valve	Extent of Survey	Flow Meter	Gulley	Hatch Box	Head of System	Hydrobrake / Vortex	Inlet	Inspection Chamber	Bifurcation	Catchpit	Contaminated Surface Water	WW Pumping Station
CA	CA	NRV	ES	FI	GU	HA	HS	HY	AI	IC	II	CA	CA	Sludge Pumping Station
Cascade	Cascade	Non Return Valve	Extent of Survey	Flow Meter	Gulley	Hatch Box	Head of System	Hydrobrake / Vortex	Inlet	Inspection Chamber	Bifurcation	Catchpit	Contaminated Surface Water	Sludge Pumping Station
CA	CA	NRV	ES	FI	GU	HA	HS	HY	AI	IC	II	CA	CA	Sewer Overflow
Cascade	Cascade	Non Return Valve	Extent of Survey	Flow Meter	Gulley	Hatch Box	Head of System	Hydrobrake / Vortex	Inlet	Inspection Chamber	Bifurcation	Catchpit	Contaminated Surface Water	Sewer Overflow
CA	CA	NRV	ES	FI	GU	HA	HS	HY	AI	IC	II	CA	CA	T Junction/Saddle
Cascade	Cascade	Non Return Valve	Extent of Survey	Flow Meter	Gulley	Hatch Box	Head of System	Hydrobrake / Vortex	Inlet	Inspection Chamber	Bifurcation	Catchpit	Contaminated Surface Water	T Junction/Saddle
CA	CA	NRV	ES	FI	GU	HA	HS	HY	AI	IC	II	CA	CA	LampHole
Cascade	Cascade	Non Return Valve	Extent of Survey	Flow Meter	Gulley	Hatch Box	Head of System	Hydrobrake / Vortex	Inlet	Inspection Chamber	Bifurcation	Catchpit	Contaminated Surface Water	LampHole
CA	CA	NRV	ES	FI	GU	HA	HS	HY	AI	IC	II	CA	CA	Oil Interceptor
Cascade	Cascade	Non Return Valve	Extent of Survey	Flow Meter	Gulley	Hatch Box	Head of System	Hydrobrake / Vortex	Inlet	Inspection Chamber	Bifurcation	Catchpit	Contaminated Surface Water	Oil Interceptor
CA	CA	NRV	ES	FI	GU	HA	HS	HY	AI	IC	II	CA	CA	Pen Stock
Cascade	Cascade	Non Return Valve	Extent of Survey	Flow Meter	Gulley	Hatch Box	Head of System	Hydrobrake / Vortex	Inlet	Inspection Chamber	Bifurcation	Catchpit	Contaminated Surface Water	Pen Stock
CA	CA	NRV	ES	FI	GU	HA	HS	HY	AI	IC	II	CA	CA	Pump
Cascade	Cascade	Non Return Valve	Extent of Survey	Flow Meter	Gulley	Hatch Box	Head of System	Hydrobrake / Vortex	Inlet	Inspection Chamber	Bifurcation	Catchpit	Contaminated Surface Water	Pump
CA	CA	NRV	ES	FI	GU	HA	HS	HY	AI	IC	II	CA	CA	Rodding Eye
Cascade	Cascade	Non Return Valve	Extent of Survey	Flow Meter	Gulley	Hatch Box	Head of System	Hydrobrake / Vortex	Inlet	Inspection Chamber	Bifurcation	Catchpit	Contaminated Surface Water	Rodding Eye
CA	CA	NRV	ES	FI	GU	HA	HS	HY	AI	IC	II	CA	CA	Soakaway
Cascade	Cascade	Non Return Valve	Extent of Survey	Flow Meter	Gulley	Hatch Box	Head of System	Hydrobrake / Vortex	Inlet	Inspection Chamber	Bifurcation	Catchpit	Contaminated Surface Water	Soakaway
CA	CA	NRV	ES	FI	GU	HA	HS	HY	AI	IC	II	CA	CA	Summit
Cascade	Cascade	Non Return Valve	Extent of Survey	Flow Meter	Gulley	Hatch Box	Head of System	Hydrobrake / Vortex	Inlet	Inspection Chamber	Bifurcation	Catchpit	Contaminated Surface Water	Summit
CA	CA	NRV	ES	FI	GU	HA	HS	HY	AI	IC	II	CA	CA	Valve
Cascade	Cascade	Non Return Valve	Extent of Survey	Flow Meter	Gulley	Hatch Box	Head of System	Hydrobrake / Vortex	Inlet	Inspection Chamber	Bifurcation	Catchpit	Contaminated Surface Water	Valve
CA	CA	NRV	ES	FI	GU	HA	HS	HY	AI	IC	II	CA	CA	Valve Chamber
Cascade	Cascade	Non Return Valve	Extent of Survey	Flow Meter	Gulley	Hatch Box	Head of System	Hydrobrake / Vortex	Inlet	Inspection Chamber	Bifurcation	Catchpit	Contaminated Surface Water	Valve Chamber
CA	CA	NRV	ES	FI	GU	HA	HS	HY	AI	IC	II	CA	CA	Washout Chamber
Cascade	Cascade	Non Return Valve	Extent of Survey	Flow Meter	Gulley	Hatch Box	Head of System	Hydrobrake / Vortex	Inlet	Inspection Chamber	Bifurcation	Catchpit	Contaminated Surface Water	Washout Chamber
CA	CA	NRV	ES	FI	GU	HA	HS	HY	AI	IC	II	CA	CA	Dropshaft
Cascade	Cascade	Non Return Valve	Extent of Survey	Flow Meter	Gulley	Hatch Box	Head of System	Hydrobrake / Vortex	Inlet	Inspection Chamber	Bifurcation	Catchpit	Contaminated Surface Water	Dropshaft
CA	CA	NRV	ES	FI	GU	HA	HS	HY	AI	IC	II	CA	CA	WW Treatment Works
Cascade	Cascade	Non Return Valve	Extent of Survey	Flow Meter	Gulley	Hatch Box	Head of System	Hydrobrake / Vortex	Inlet	Inspection Chamber	Bifurcation	Catchpit	Contaminated Surface Water	WW Treatment Works
CA	CA	NRV	ES	FI	GU	HA	HS	HY	AI	IC	II	CA	CA	Septic Tank
Cascade	Cascade	Non Return Valve	Extent of Survey	Flow Meter	Gulley	Hatch Box	Head of System	Hydrobrake / Vortex	Inlet	Inspection Chamber	Bifurcation	Catchpit	Contaminated Surface Water	Septic Tank
CA	CA	NRV	ES	FI	GU	HA	HS	HY	AI	IC	II	CA	CA	Vent Column
Cascade	Cascade	Non Return Valve	Extent of Survey	Flow Meter	Gulley	Hatch Box	Head of System	Hydrobrake / Vortex	Inlet	Inspection Chamber	Bifurcation	Catchpit	Contaminated Surface Water	Vent Column
CA	CA	NRV	ES	FI	GU	HA	HS	HY	AI	IC	II	CA	CA	Network Storage Tank
Cascade	Cascade	Non Return Valve	Extent of Survey	Flow Meter	Gulley	Hatch Box	Head of System	Hydrobrake / Vortex	Inlet	Inspection Chamber	Bifurcation	Catchpit	Contaminated Surface Water	Network Storage Tank
CA	CA	NRV	ES	FI	GU	HA	HS	HY	AI	IC	II	CA	CA	Office Plate
Cascade	Cascade	Non Return Valve	Extent of Survey	Flow Meter	Gulley	Hatch Box	Head of System	Hydrobrake / Vortex	Inlet	Inspection Chamber	Bifurcation	Catchpit	Contaminated Surface Water	Office Plate
CA	CA	NRV	ES	FI	GU	HA	HS	HY	AI	IC	II	CA	CA	Vortex Chamber
Cascade	Cascade	Non Return Valve	Extent of Survey	Flow Meter	Gulley	Hatch Box	Head of System	Hydrobrake / Vortex	Inlet	Inspection Chamber	Bifurcation	Catchpit	Contaminated Surface Water	Vortex Chamber
CA	CA	NRV	ES	FI	GU	HA	HS	HY	AI	IC	II	CA	CA	Penstock Chamber
Cascade	Cascade	Non Return Valve	Extent of Survey	Flow Meter	Gulley	Hatch Box	Head of System	Hydrobrake / Vortex	Inlet	Inspection Chamber	Bifurcation	Catchpit	Contaminated Surface Water	Penstock Chamber
CA	CA	NRV	ES	FI	GU	HA	HS	HY	AI	IC	II	CA	CA	Blind Manhole
Cascade	Cascade	Non Return Valve	Extent of Survey	Flow Meter	Gulley	Hatch Box	Head of System	Hydrobrake / Vortex	Inlet	Inspection Chamber	Bifurcation	Catchpit	Contaminated Surface Water	Blind Manhole
CA	CA	NRV	ES	FI	GU	HA	HS	HY	AI	IC	II	CA	CA	Foul Surface Combined Overflow
Cascade	Cascade	Non Return Valve	Extent of Survey	Flow Meter	Gulley	Hatch Box	Head of System	Hydrobrake / Vortex	Inlet	Inspection Chamber	Bifurcation	Catchpit	Contaminated Surface Water	Foul Surface Combined Overflow
CA	CA	NRV	ES	FI	GU	HA	HS	HY	AI	IC	II	CA	CA	Screen Chamber
Cascade	Cascade	Non Return Valve	Extent of Survey	Flow Meter	Gulley	Hatch Box	Head of System	Hydrobrake / Vortex	Inlet	Inspection Chamber	Bifurcation	Catchpit	Contaminated Surface Water	Screen Chamber
CA	CA	NRV	ES	FI	GU	HA	HS	HY	AI	IC	II	CA	CA	Discharge Point
Cascade	Cascade	Non Return Valve	Extent of Survey	Flow Meter	Gulley	Hatch Box	Head of System	Hydrobrake / Vortex	Inlet	Inspection Chamber	Bifurcation	Catchpit	Contaminated Surface Water	Discharge Point
CA	CA	NRV	ES	FI	GU	HA	HS	HY	AI	IC	II	CA	CA	Outfall
Cascade	Cascade	Non Return Valve	Extent of Survey	Flow Meter	Gulley	Hatch Box	Head of System	Hydrobrake / Vortex	Inlet	Inspection Chamber	Bifurcation	Catchpit	Contaminated Surface Water	Outfall

LEGEND

MANHOLE FUNCTION	
FO	Foul
SW	Surface Water
CO	Combined
OV	Overflow
SEWER SHAPE	
CI	Circular
EG	Egg
OV	Oval
FT	Flat Top
RE	Rectangular
SQ	Square
SEWER MATERIAL	
AC	Asbestos Cement
BR	Brick
PE	Polyethylene
RP	Reinforced Plastic Matrix
CO	Concrete
CSB	Concrete Segment Bolted
CSU	Concrete Segment Unbolted
CC	Concrete Box Culverted
PSC	Plastic/Steel Composite
GRC	Glass Reinforced Concrete
GRP	Glass Reinforced Plastic
U	Un
DI	DI
PVC	PVC
CI	CI
SI	SI
ST	ST
V	V
PP	PP
PF	PF
MAC	MAC
M	M
U	U

The position of underground apparatus shown on this plan is based on the best information currently available. The actual positions may be different from those shown on the plan and private pipes, sewers or drains may not be recorded. United Utilities will not accept any liability for any damage different from those shown.

United Utilities 2001. The plan is based upon the Ordinance Survey Controller of H.M. Stationery Office. Crown and United Utilities reproduction will infringe these copyrights.

OS Sheet No: SD

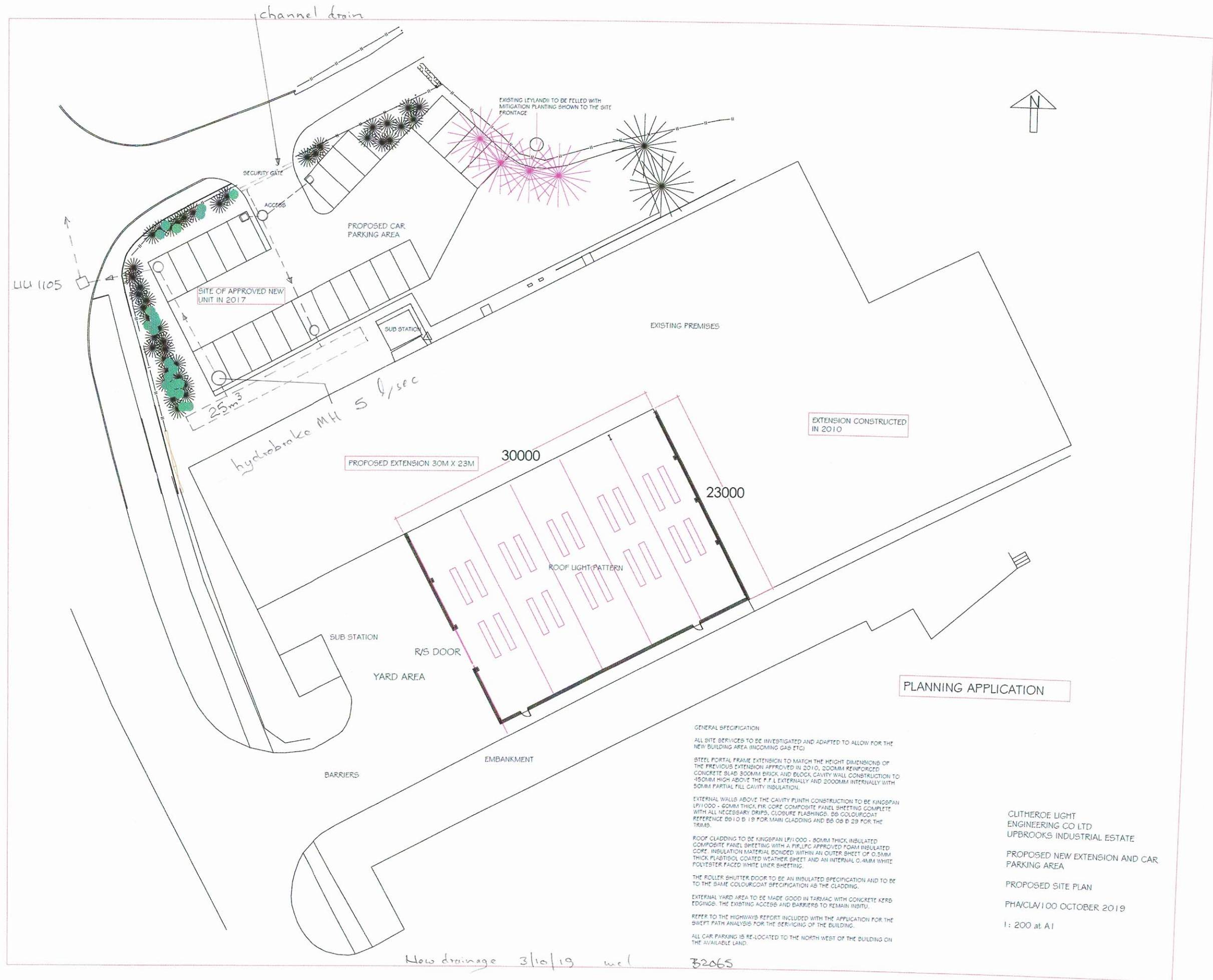
Scale: 1: 1250 Date

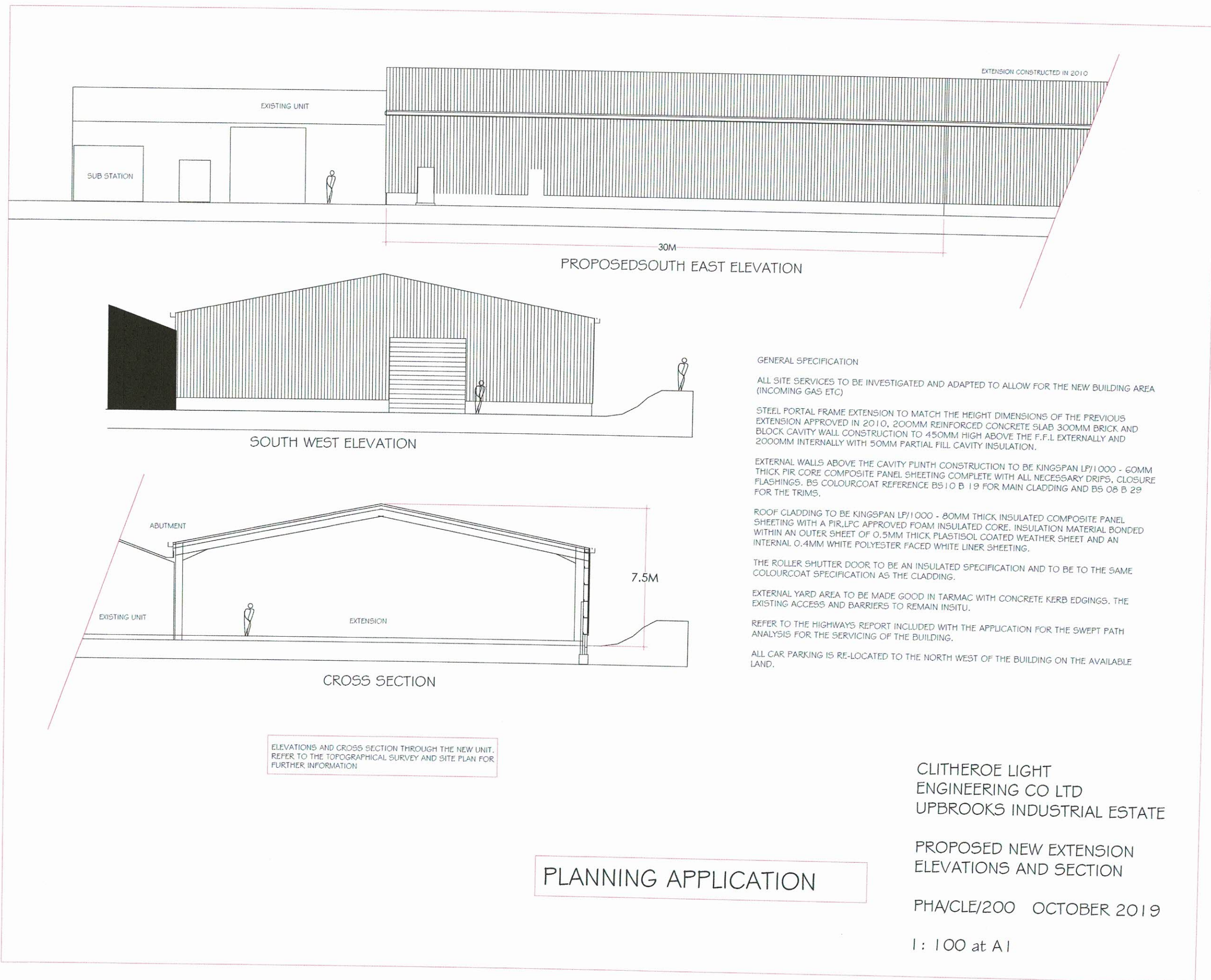
47 Nod

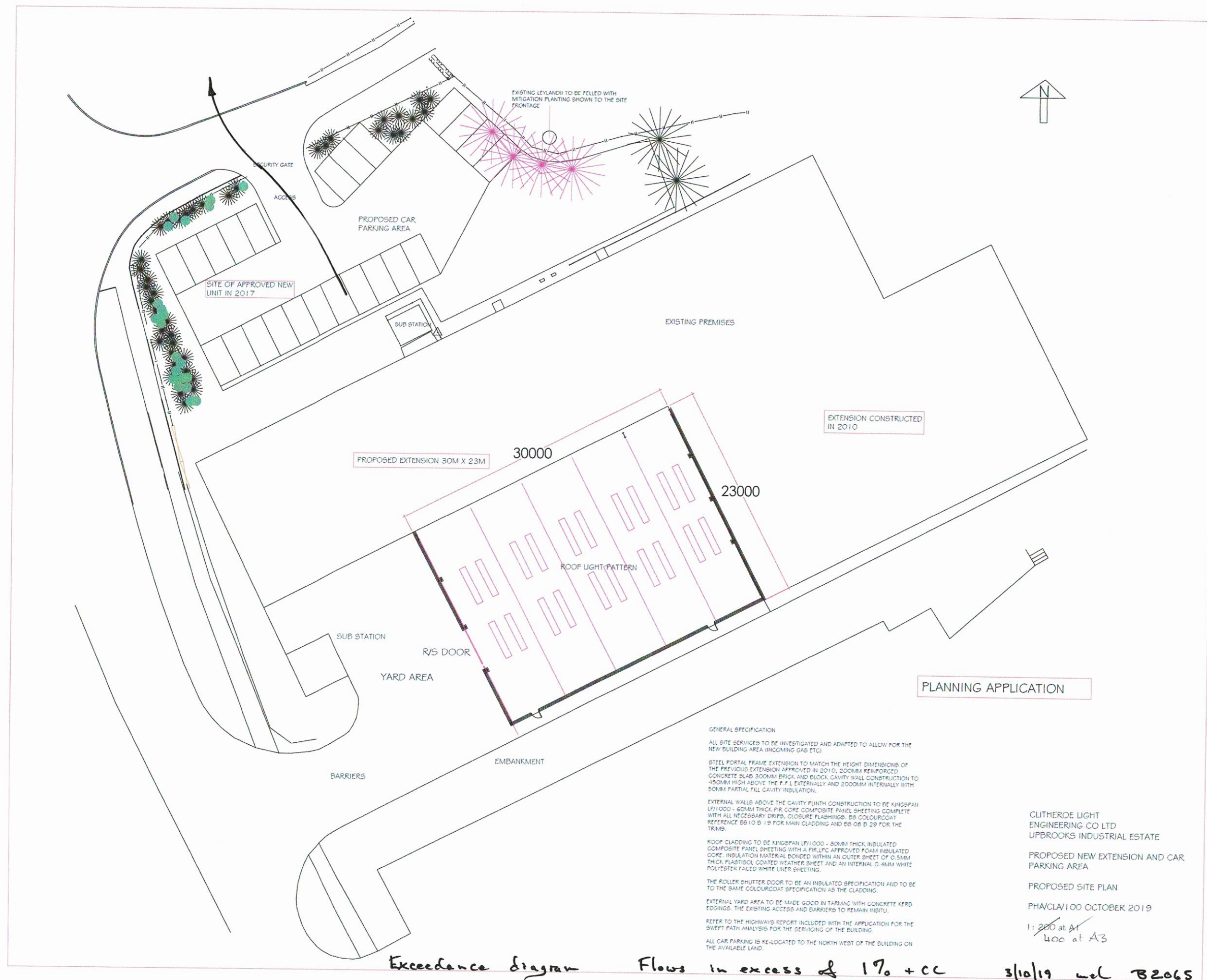
Sheet 1 of



SEWER REC







GENERAL SPECIFICATION

ALL SITE SERVICES TO BE INVESTIGATED AND ADAPTED TO ALLOW FOR THE NEW BUILDING AREA (INCOMING GAS ETC)

STEEL PORTAL FRAME EXTENSION TO MATCH THE HEIGHT DIMENSIONS OF THE PREVIOUS EXTENSION APPROVED IN 2010. 300MM REINFORCED CONCRETE SLAB 300MM BRICK AND BLOCK CAVITY WALL CONSTRUCTION TO 450MM HIGH ABOVE THE F.F.L. EXTERNALLY AND 2000MM INTERNALLY WITH 50MM PARTIAL FILL CAVITY INSULATION.

EXTERNAL WALLS ABOVE THE CAVITY PLINTH CONSTRUCTION TO BE KINGSPAN LP1/000 - 60MM THICK FIR CORE COMPOSITE PANEL SHEETING COMPLETE WITH ALL NECESSARY DRIPS, CLOSURE FLASHINGS. BS COLOURCOAT REFERENCE BS10 D 19 FOR MAIN CLADDING AND BS 08 D 29 FOR THE TRIMS.

ROOF CLADDING TO BE KINGSPAN LP1/000 - 80MM THICK INSULATED COMPOSITE PANEL SHEETING WITH A FIR/LPC APPROVED FOAM INSULATED CORE. INSULATION MATERIAL BONDED WITHIN AN OUTER SHEET OF 0.5MM THICK PLASTISOL COATED WEATHER SHEET AND AN INTERNAL 0.4MM WHITE POLYESTER FACED WHITE LINER SHEETING.

THE ROLLER SHUTTER DOOR TO BE AN INSULATED SPECIFICATION AND TO BE TO THE SAME COLOURCOAT SPECIFICATION AS THE CLADDING.

EXTERNAL YARD AREA TO BE MADE GOOD IN TARMAC WITH CONCRETE KERB EDGINGS. THE EXISTING ACCESS AND BARRIERS TO REMAIN IN SITU.

REFER TO THE HIGHWAYS REPORT INCLUDED WITH THE APPLICATION FOR THE SWEEP PATH ANALYSIS FOR THE SERVING OF THE BUILDING.

ALL CAR PARKING IS RE-LOCATED TO THE NORTH WEST OF THE BUILDING ON THE AVAILABLE LAND.

CLITHEROE LIGHT
ENGINEERING CO LTD
UPBROOKS INDUSTRIAL ESTATE

PROPOSED NEW EXTENSION AND CAR
PARKING AREA

PROPOSED SITE PLAN

PHACLA100 OCTOBER 2019

1: 200 at A1
400 at A3

Exceedance Diagram

Flows in excess of 17% + CC

3/10/19 wcl B2065

[illegible]

Location

Enter a place or postcode in England:

J flow 1 in 1000 year

Approx mapping



Flood risk from rivers or the sea

Extent of flooding

Depth and flow estimates at monitoring stations

Flood risk from surface water

Extent of flooding

High risk: depth

High risk: velocity

Medium risk: depth

Medium risk: velocity

Low risk: depth

Low risk: velocity

Flood risk from reservoirs

Extent of flooding

Flood depth

Flood speed

