

**Notes**  
 Unless indicated, this drawing is for information only and should not be used for construction. Do not scale, use figured dimensions only. All dimensions to be checked on site. This drawing should be printed and read at the original size, as stated above. Cartwright Pickard Architects accepts no responsibility for errors that occur as a result of reviewing this drawing at any other size.

Cartwright Pickard Architects prepared this drawing using Revit 2019.2 and does not accept liability for any loss or degradation of that information held in the drawing resulting from the translation from the original file format to any other file format or from the recipient's reading of it in any other programme or an earlier version of the programme referred to above. Cartwright Pickard Architects accepts no liability for use of this drawing by parties other than the party for whom it was prepared or for purposes other than those for which it was prepared.

**DWG Issues**  
 When this drawing is issued in DWG format it is an uncontrolled version and is provided to enable the recipient to prepare its own documents/drawings for which it is solely responsible. It is based on background information current at the time of issue.

Cartwright Pickard Architects accepts no liability for any alterations to additions to or discrepancies arising out of changes to such background information which occur after it has been issued by Cartwright Pickard Architects.

- KEY**
- |   |                              |
|---|------------------------------|
| 01 - Sinusoidal Metal Cladding          | Finish Colour - Silver       |
| 02 - Facing Brick                       | Finish Colour - Dark Grey    |
| 03 - Flat Metal Panel                   | Finish Colour - Light Bronze |
| 04 - Perforated Metal Panel             | Finish Colour - Light Bronze |
| 05 - Plant Screen Louvres               | Finish Colour - Silver       |
| 06 - Metal Faced Door                   | Finish Colour - Dark Grey    |
| 07 - Opaque Glazing Panel               | Finish Colour - Dark Grey    |
| Acid Etch to Inner layer DGU            | Finish Colour - Dark Grey    |
| 08 - Translucent Glazing Panel          | Finish Colour - White        |
| Translucent Inner Layer Laminate        |                              |
| 09 - Curtain Wall Mullion / Transom     | Finish Colour - Light Bronze |
| 10 - Slim Profile Capping               | Finish Colour - Light Grey   |
| 11 - Curtain Wall Glazing               | Finish Colour - Clear        |
| 12 - Weldmesh / Grating                 | Finish Colour - TBC          |
| 13 - Metal Infill Panel                 | Finish Colour - Light Bronze |
| 14 - Signage                            | Finish Colour - TBC          |
| 15 - Roof Plant Zone (office only)      | Finish - TBC                 |
| 16 - Roller Shutter Door                | Finish Colour - Silver       |
| 17 - External Steel Coating             | Finish Colour - Dark Grey    |
| 18 - Weldmesh / Grating                 | Finish Colour - TBC          |
| To allow greenery to grow up it         |                              |
| 19 - Manual Sliding Gate with 18 infill |                              |
| 20 - Gabion Retaining Wall              | Finish Colour - Dark Grey    |
| 21 - C/W - mullions / Transoms          | Subject to development       |
| 22 - Outline MEP proposals              |                              |

**Drawing Revisions**

| Date:    | Rev: | Note:        | Check: |
|----------|------|--------------|--------|
| 07.11.19 | -    | For Planning | LP     |

CARTWRIGHT PICKARD

**Client**  
 The University of Sheffield / AMRC NW

**Project**  
 832 AMRC North West

**Building Name**  
 AMRC NW

**Drawing Title**  
 Elevations

**Scale**  
 1:200 @ A1

**Drawing Created**  
 06.11.19

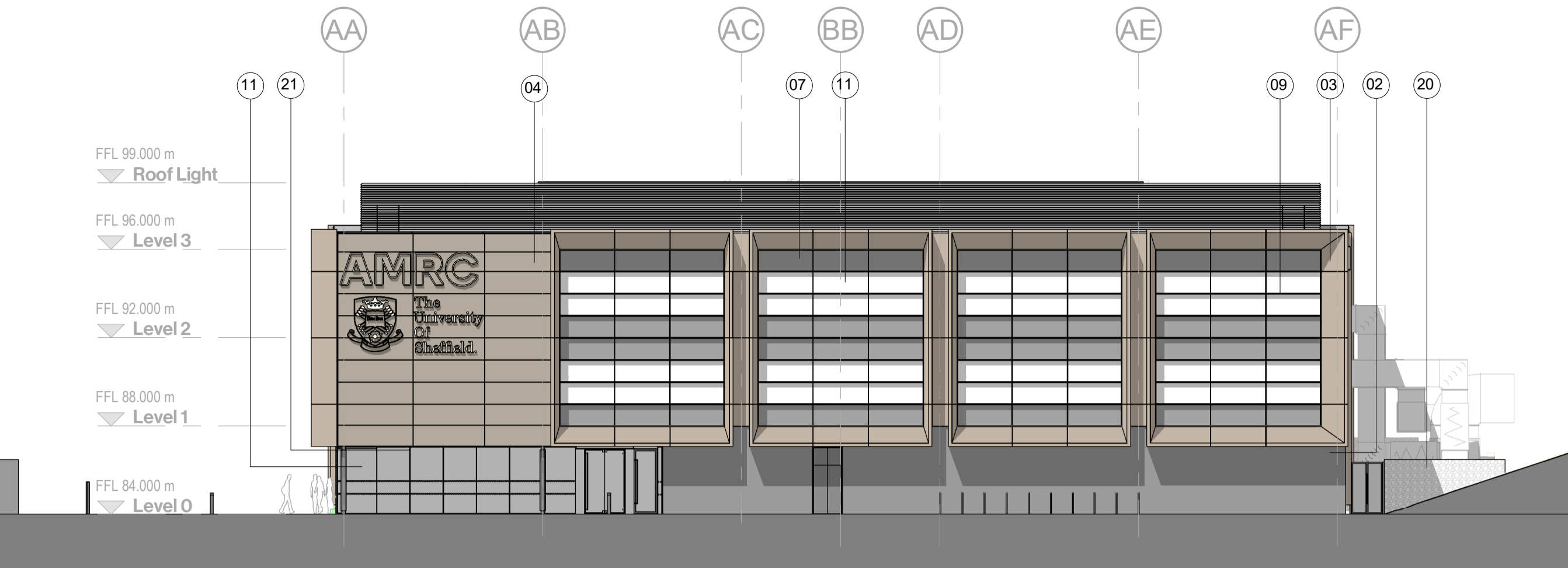
**Drawing Status**  
 For Planning

**Revision**  
 -

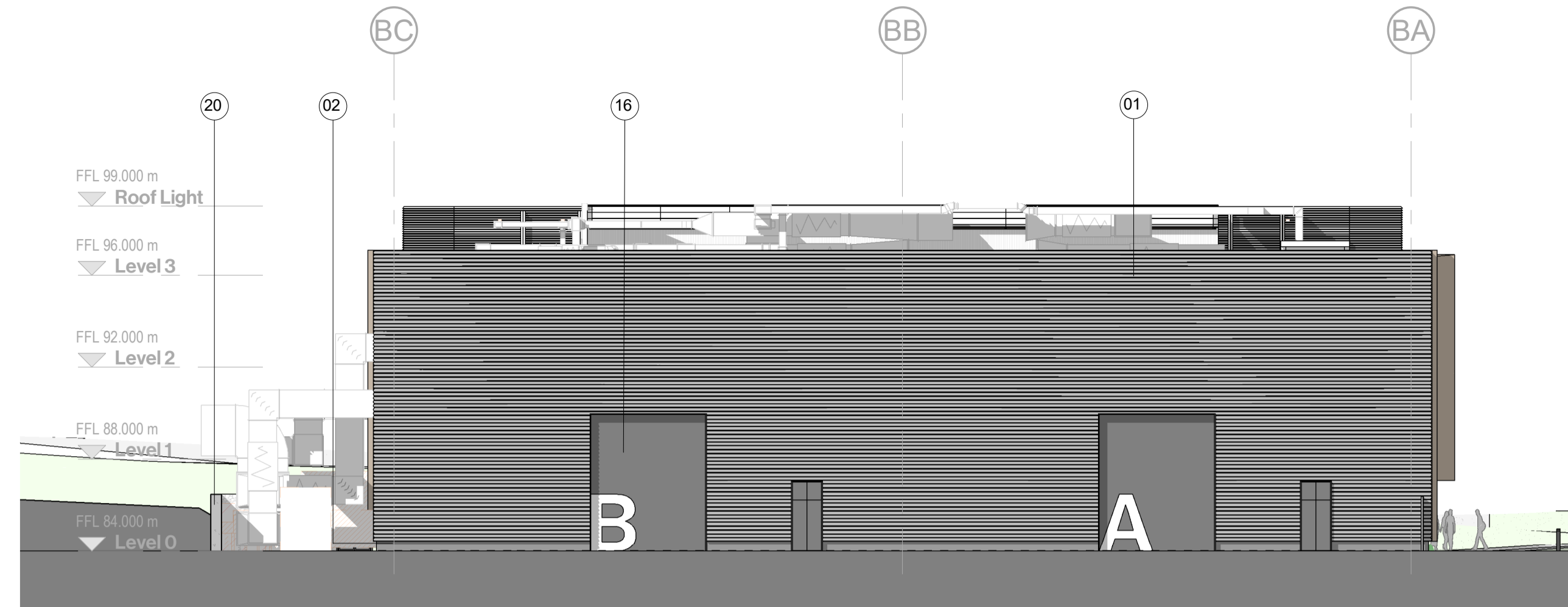
**Drawing No.**  
 832-CPA-ZZ-ZZ-DR-A-2200

**Manchester Office**  
 Unit 20/21 Duxie House  
 Duxie Street  
 Manchester M1 2JW  
 Tel: 0161 275 7444

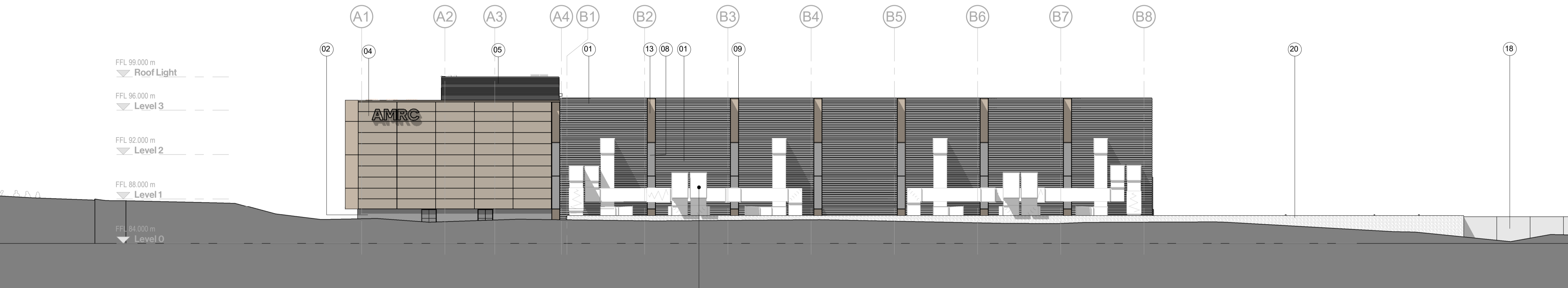
**cartwrightpickard.com**  
 © Cartwright Pickard Architects Ltd.



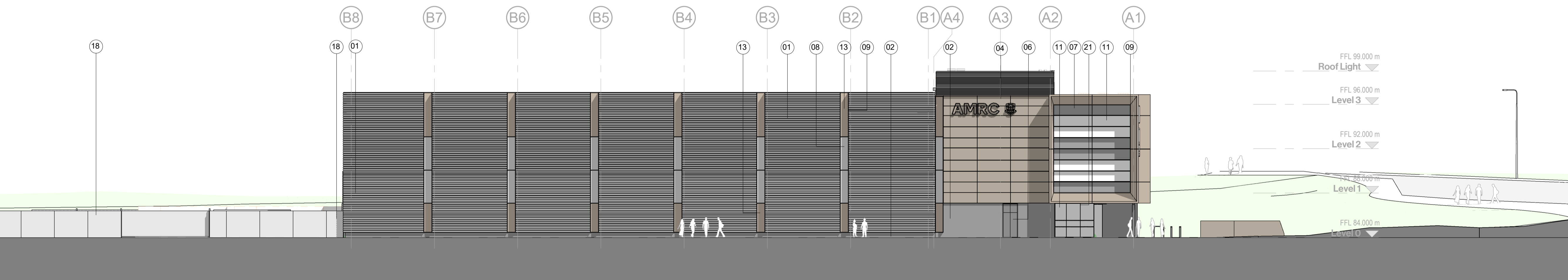
**1 Elevation South (Planning)**  
 1 : 200



**2 Elevation North (Planning)**  
 1 : 200



**3 Elevation East (Planning)**  
 1 : 200



**4 Elevation West (Planning)**  
 1 : 200

External ducting as part of the MEP strategy - subject to design development