

October 2019 / RF19-678-WP-05
Status: S2 Revision: PL01

AMRC North West Stage 3 Landscape Report

What the landscape at AMRC should offer

It has been expressed by the AMRC that the first impressions of this development are a key aspect to its success.

There is opportunity for the landscape surrounding the building to also perform an integral role in defining the identity of the development, whilst also introducing a variety of environmental enhancements and opportunities to positively effect the well-being of people who occupy the site

In broad terms, the landscape proposals for AMRC should:

- Integrate the building into the semi-rural context and positively respond to key characteristics of the local landscape;
- Provide a degree of screening to the building from nearby roads and soften its presence;
- Offer opportunities for occupiers of the site to access inviting and comfortable external spaces;
- Create a legible external environment that aids way finding and access;
- Have resilience to climate change; and
- Enhance biodiversity to the site and introduce benefits to wildlife.

This document explores various considerations of how the above objectives may be approached, so that both the building and landscape work effectively together to provide an exceptional environment.

This document is to be read in conjunction with the following drawings:

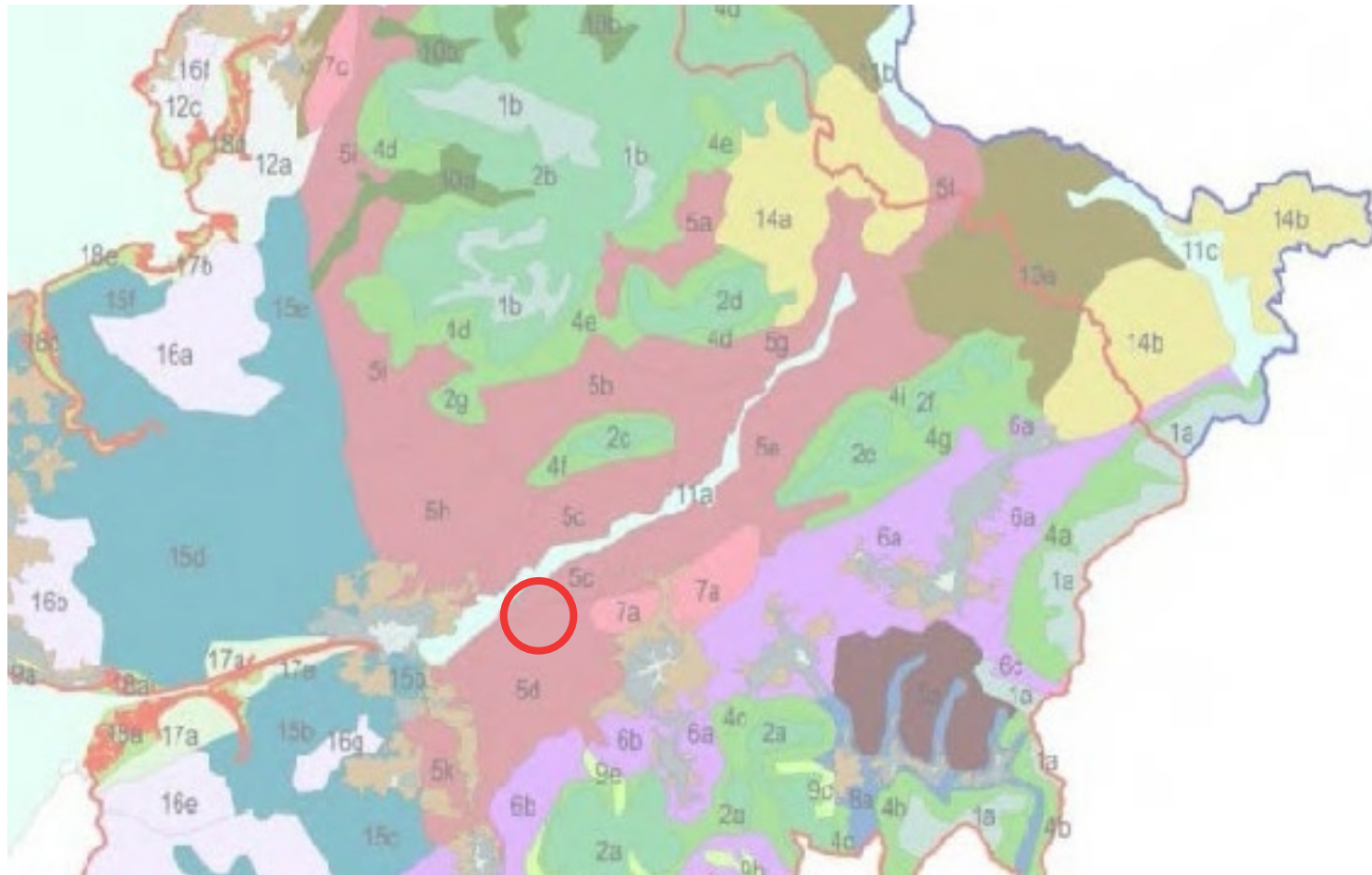
RFM-XX-00-DR-L-0001 Landscape General Arrangement

RFM-XX-00-DR-L-0002 Planting Strategy

RFM-XX-00-DR-L-8001 Hard Landscape Details

02 Analysis

Local Landscape Character



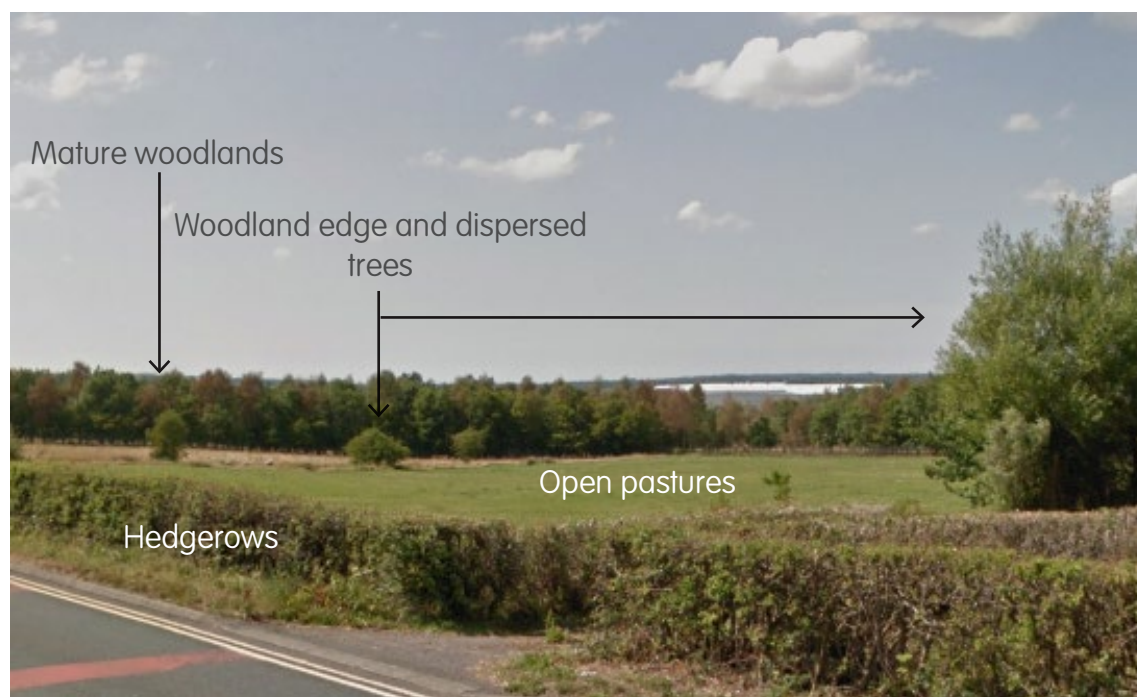
Extract from Lancashire County Council Landscape Strategy

The site is located within the Samlesbury-Withnell Fold Character Area as defined within the Lancashire County Council Landscape Strategy (2000). Key landscape characteristics include:

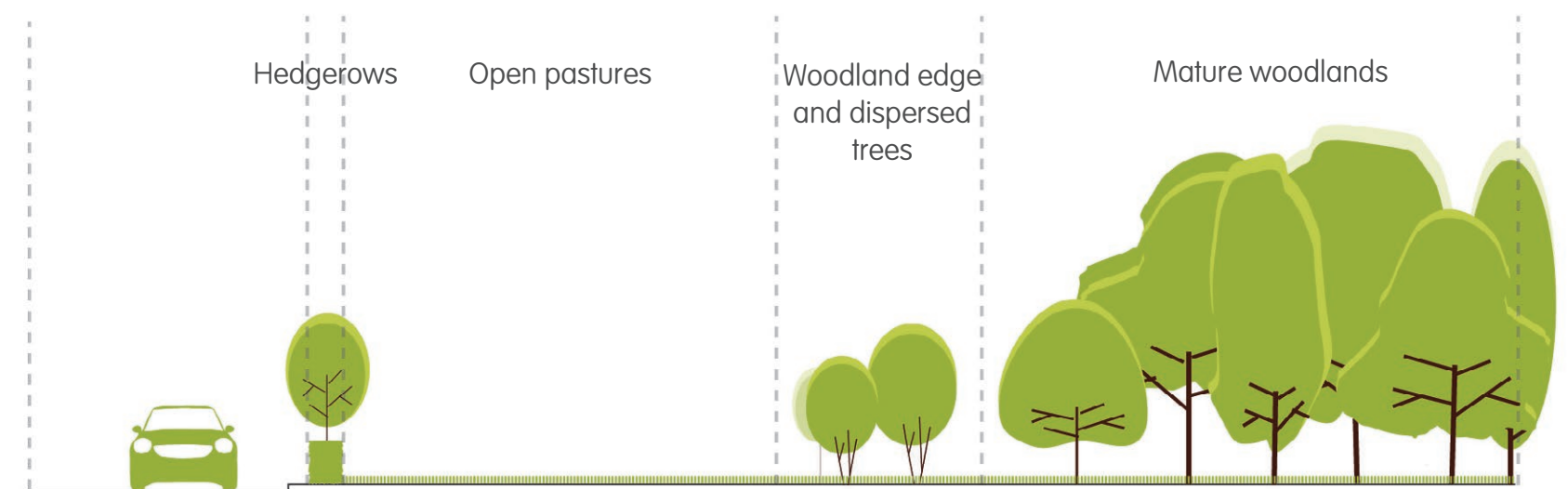
- Gently undulating topography -Significant 'engineered' earthworks would therefore likely be perceived as incongruous
- Alder and ash woodlands - The proposals should include native species of trees, in particular those found locally.
- Large lush green pastures divided by low cut hedgerows and hedgerow trees

Broadly, the site and local context are characterised by contrast, with a combination of intensively managed field pastures and hedgerows sat amongst dispersed mature woodland and less intensively managed grassland. This also creates varying degrees of openness and enclosure.

The proposed landscape at AMRC should recognise these key characteristics and positively integrate them into the character of the design.



Example of typical components of the wider landscape context

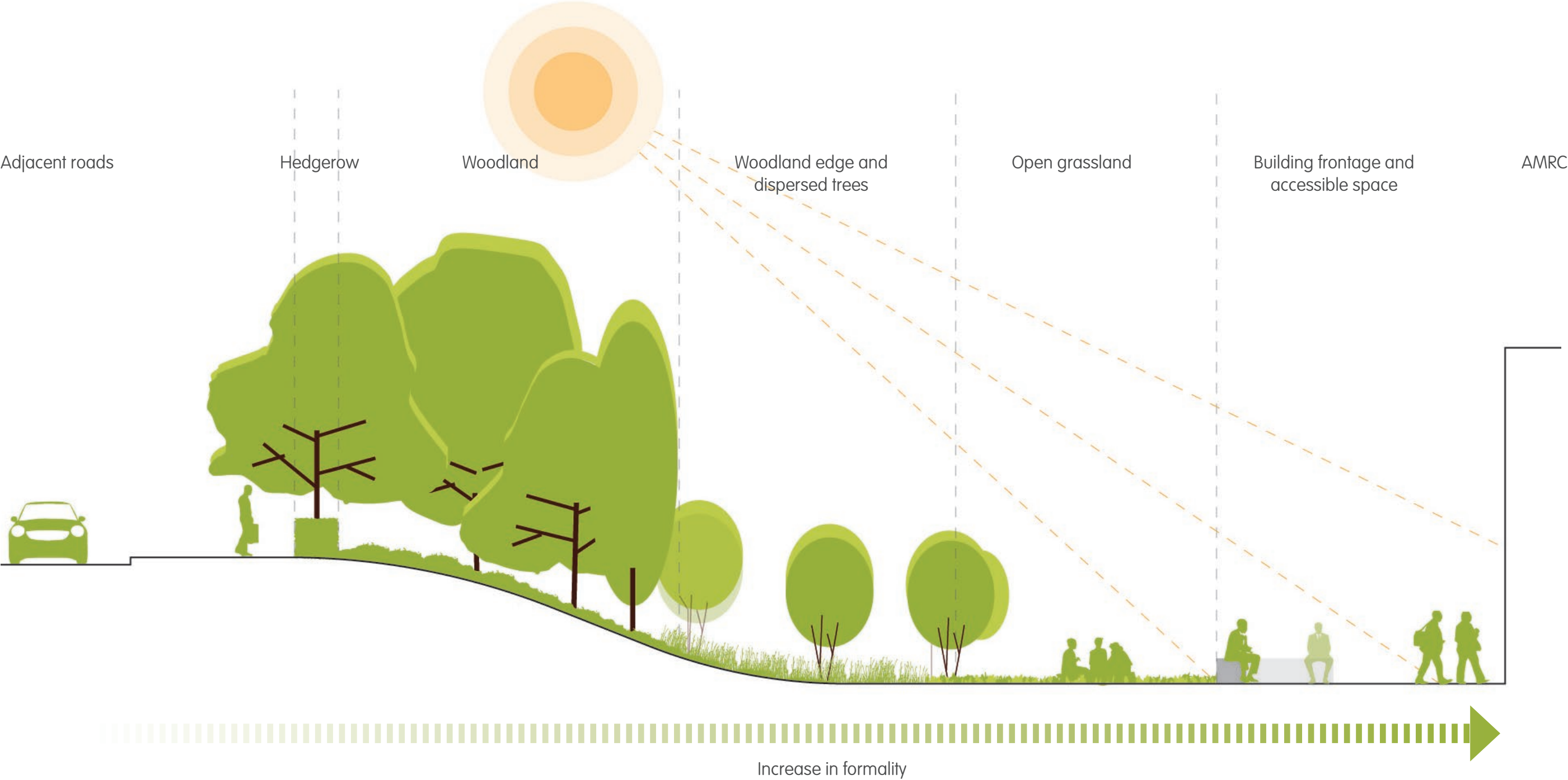


Summary of typical components of the wider landscape context

03 Concept

Landscape Identity - Approach

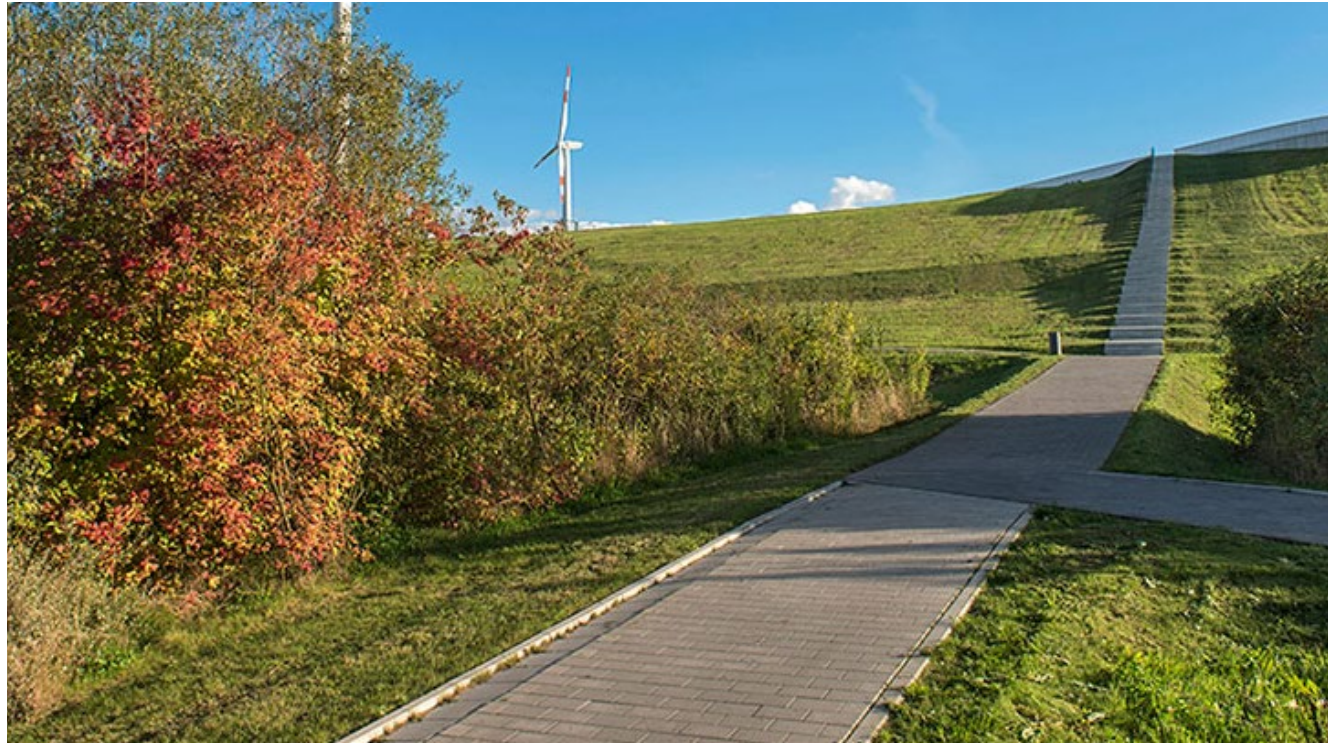
As identified in the local landscape character analysis, the landscape context exhibits a number of reoccurring characteristics. These may be applied to the site proposals as illustrated below



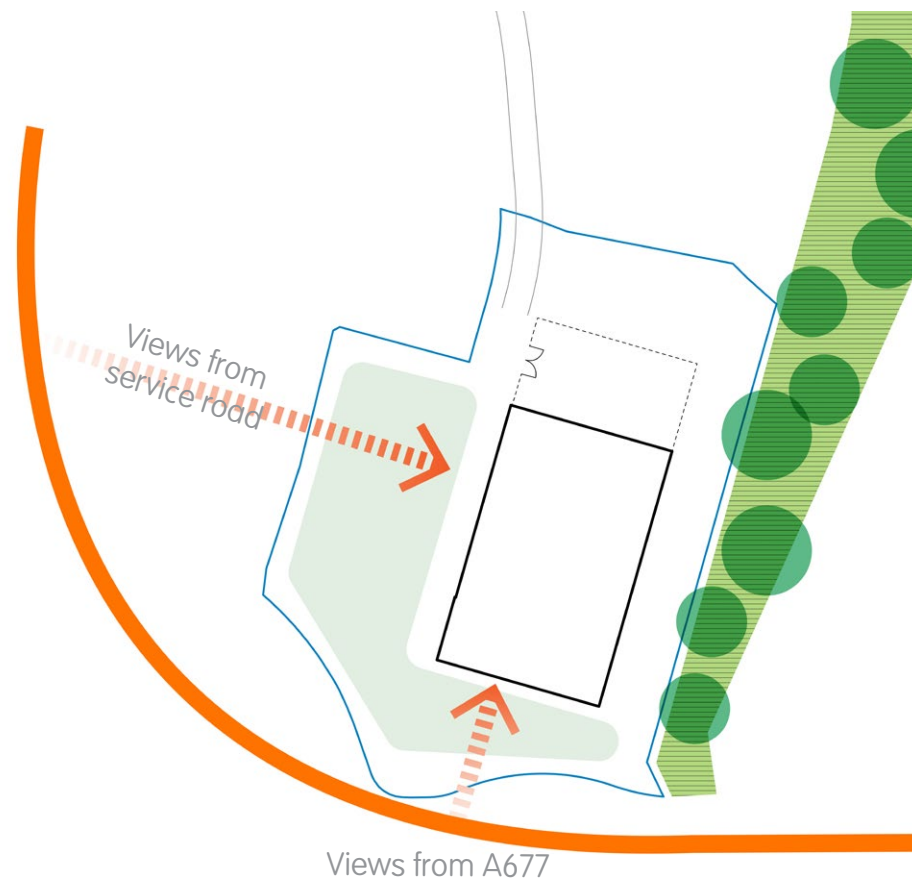
03 Concept

Landscape Identity - Precedents

Landscape proposals for AMRC are to draw upon the defining characteristics of the local landscape context and its notable juxtapositions, incorporating both openness and enclosure, formality and informality. The overall quality and appearance should form an extension of the broader landscape and site the building with a well integrated environment.

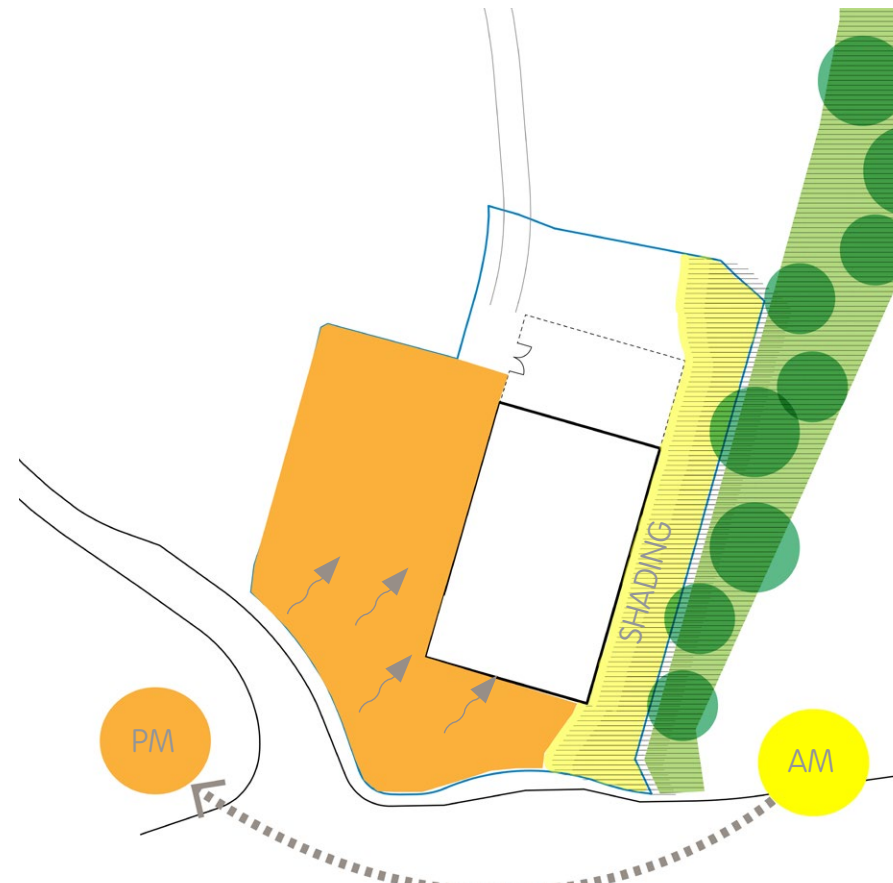


03 Concept Design Principles



Views

- Filter views of the development from local roads to provide a softening of built form within the semi-rural context
- Allow glimpsed views of the 'gateway' building when using the new service road



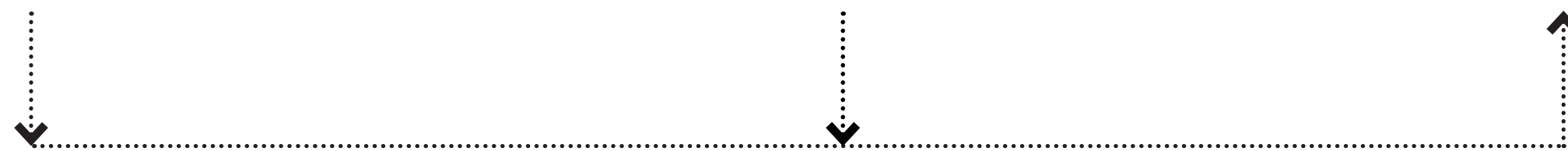
Aspect

- Situate key public space within areas that have good access to sunlight
- Provide opportunities to access shade within sunny areas
- Consider providing shelter prevailing winds from the south west



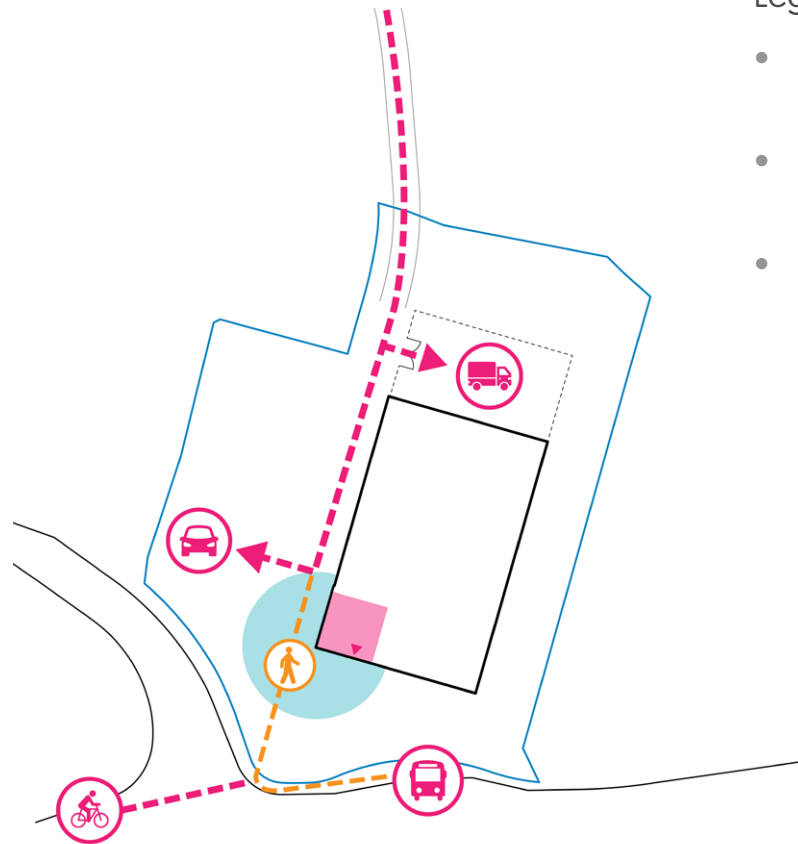
Green Infrastructure

- Wrap the adjacent woodland to the east around the site
- Respond to the local landscape structure
- Incorporate native species
- Provide shelter from south westerly winds



Factors influencing importance of green infrastructure

03 Concept Design Principles



Legibility

- Create defined arrival points for both vehicles and pedestrians
- Provide clarity to where the building entrance is located
- Provide good pedestrian permeability and access from local bus stop and car park

The concept plan opposite illustrate a number of landscape components which recognise the design principles and approach to character previously identified.

1. Defined space that provides prominence to the main entrance and connects directly to the car park. Opportunities for incorporation of seating elements and break out spaces for group activity.
2. Clear views and access routes to the main entrance
3. Opportunity to integrate SUDS into car park layout to intercept surface water along sloping gradients.
4. Opportunity to define route towards main entrance with tree planting.
5. Woodland belt to wrap around site periphery and form an extension of existing woodland belt
6. Open grassland towards the building
7. Soft landscape screening to service area entrance
8. Detention basin with flood resistant planting
9. Existing Woodland



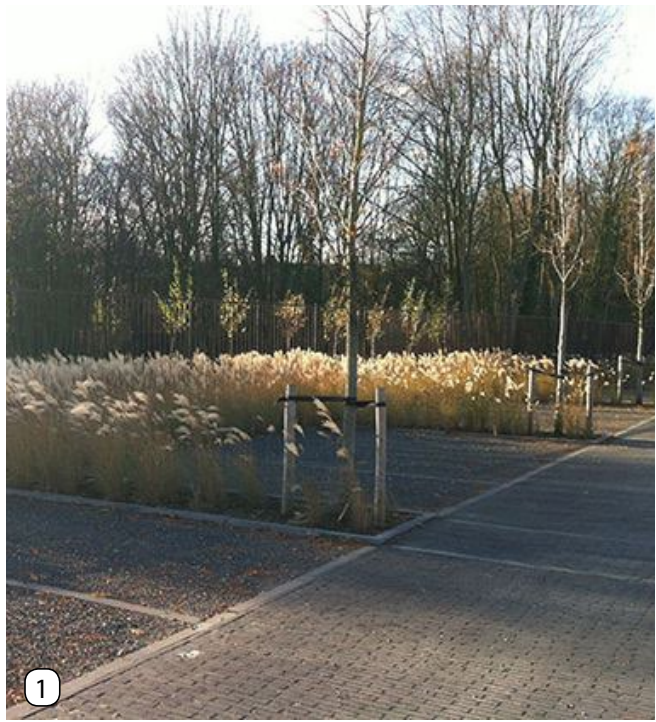
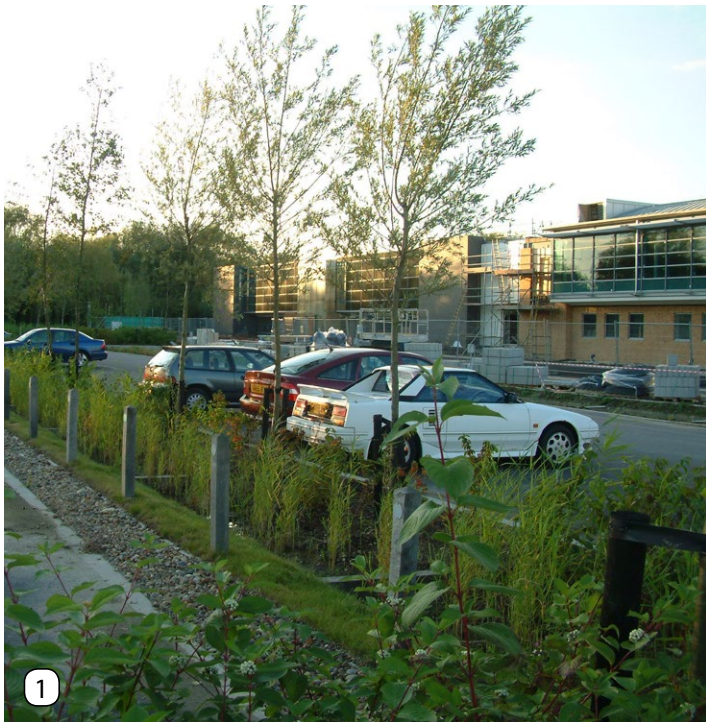
04

Appearance

Car Park



Initial sketch layout



1. Vegetated SUDS to intercept surface water run-off
2. Access road planting adjacent to building (to also function as SUDS)

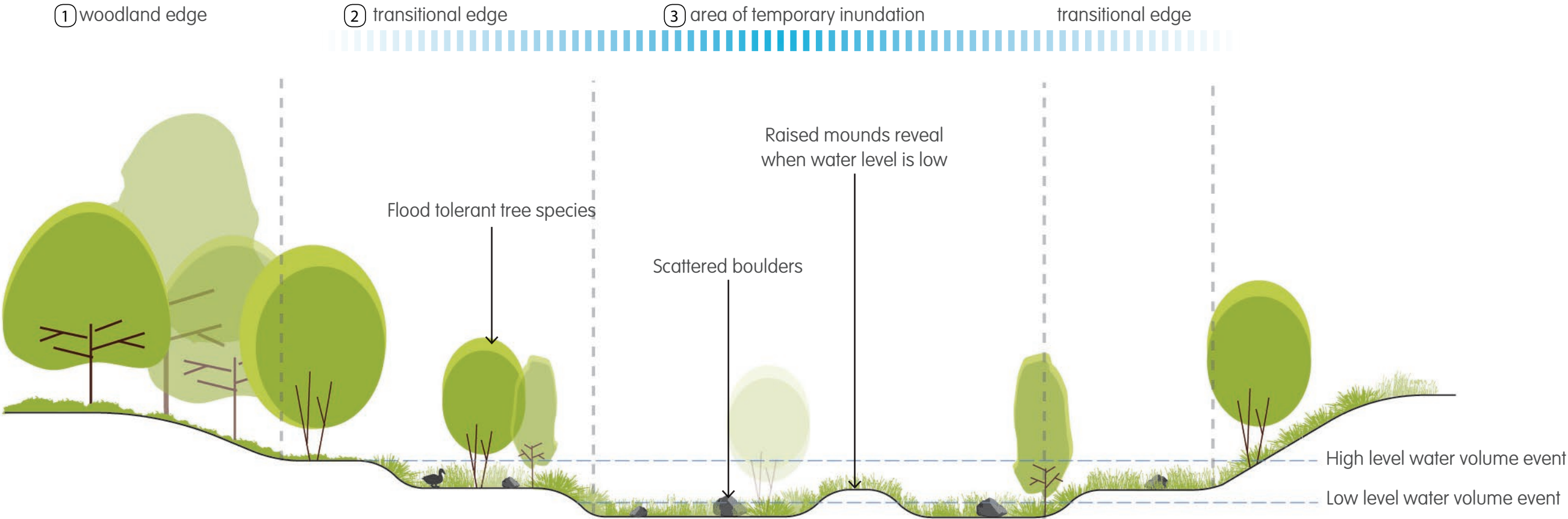
The car park has potential to function as an integral part of the identity of the development and to contribute to the site’s climate resilience through the integration of SUDS.

The sketch layout opposite proposes orientating the car park layout to allow linear bands of rain gardens to intercept surface water perpendicular to the sloping gradients of the car park.

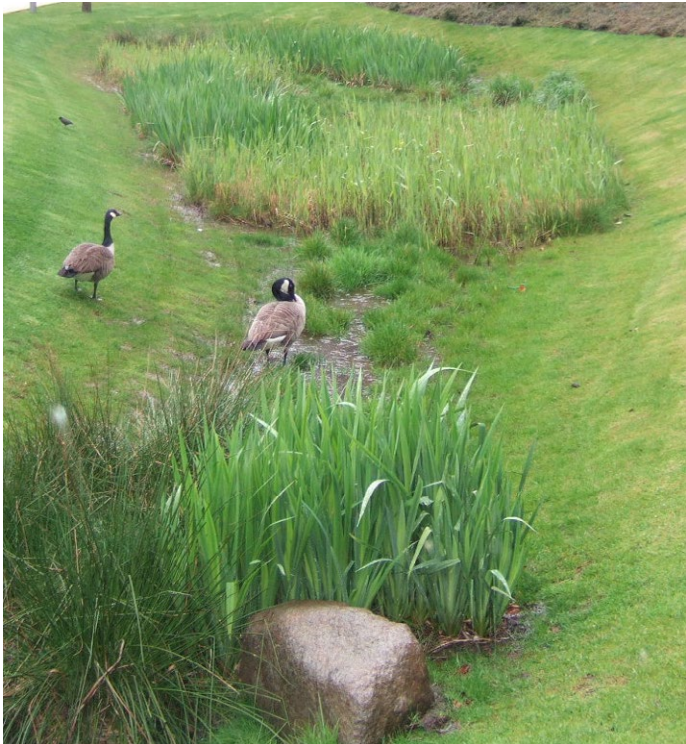
A one way in and out system allows for a reduction in carriageway width adjacent to the building and additional space for planting. Furthermore, the inwards direction carriageway brings vehicles past the main entrance, aiding way finding upon entering the site.

The layout also indicates that the space associated with the main entrance wraps around the south west corner of the building to be clearly visible from the car park and provide prominence to the building entrance

04 Appearance
Detention Basin



Indicative detention basin character



example of detention basin when dry



example of woodland edge with understory planting

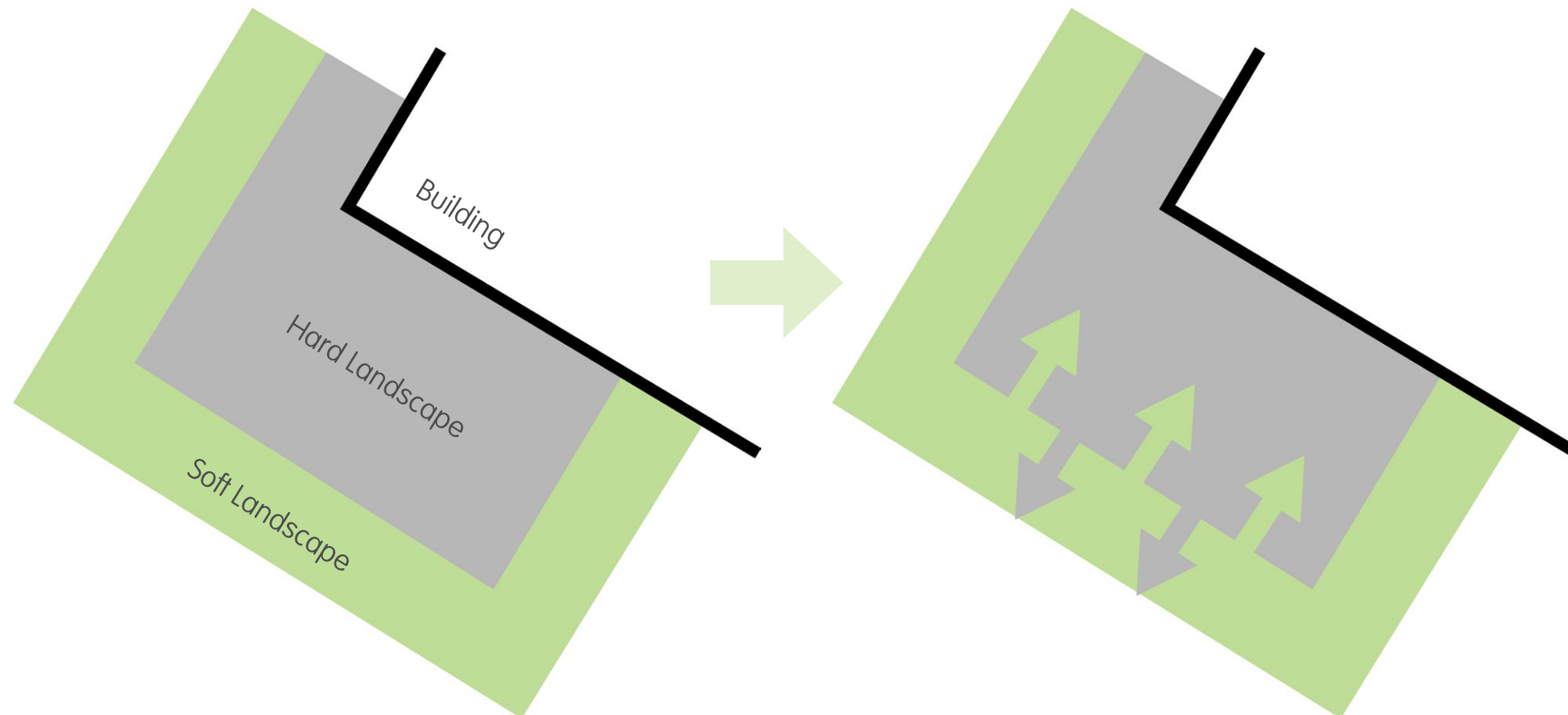
04 Appearance

Main Entrance Space

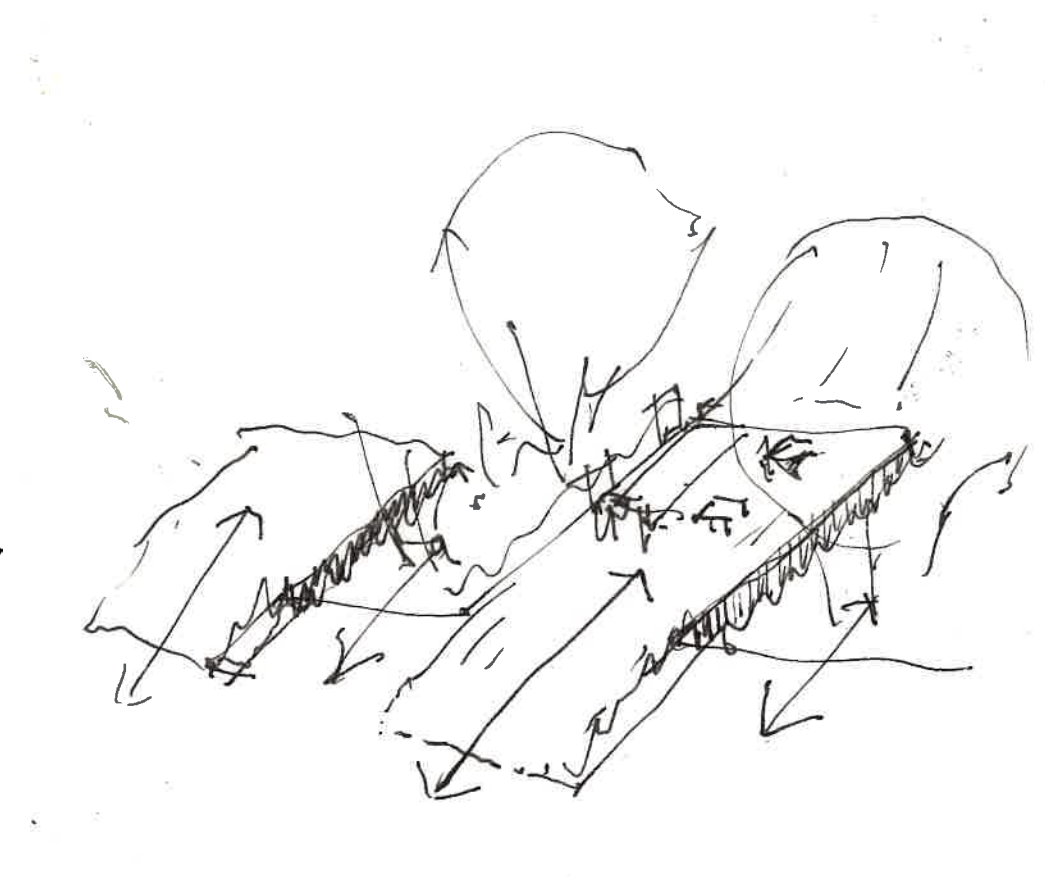
As described earlier in this document, it is considered important that the building has a strong relationship with the landscape context in which it is situated. This is relevant from both an aesthetic and ecological perspective.



Main entrance space concept diagrams

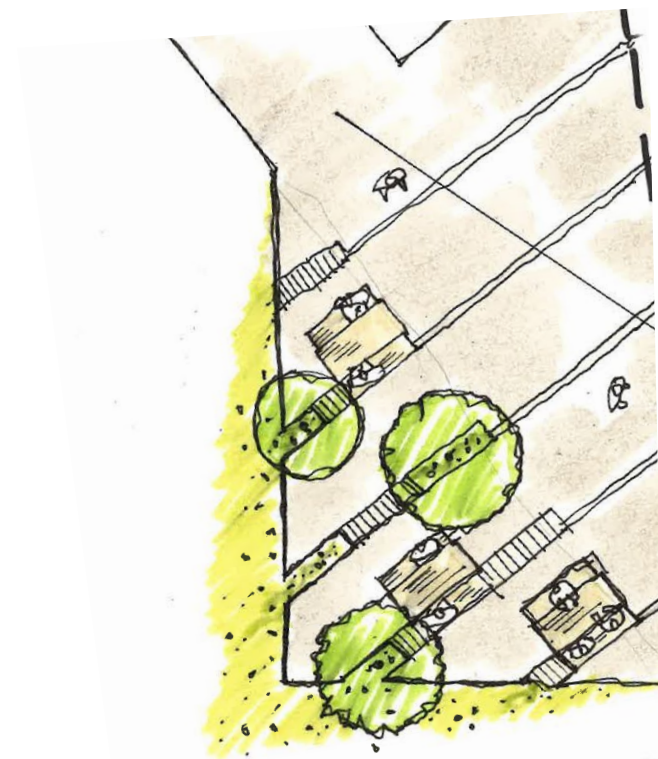
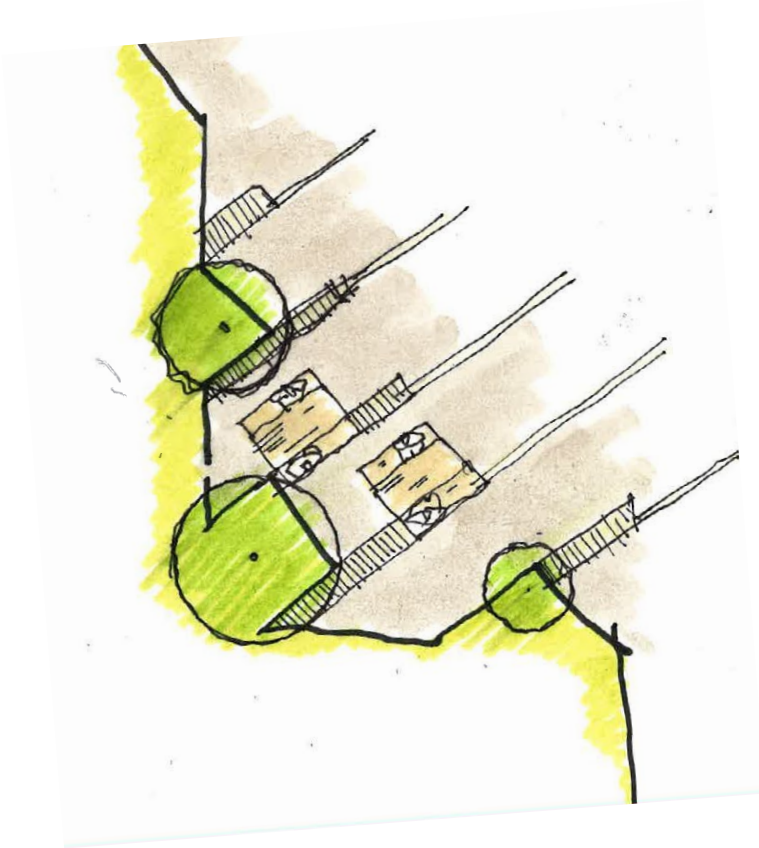


Main entrance space concept sketch

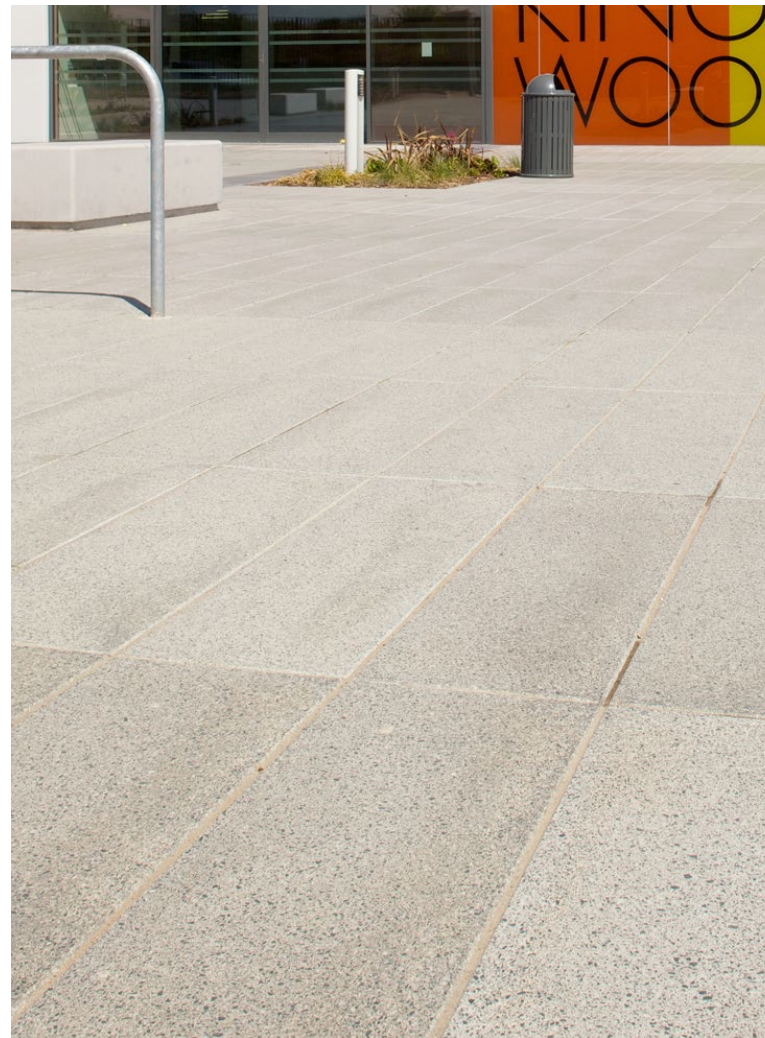


04 Design Main Entrance Space

Main entrance space sketch progression



04 Appearance Hard Landscape



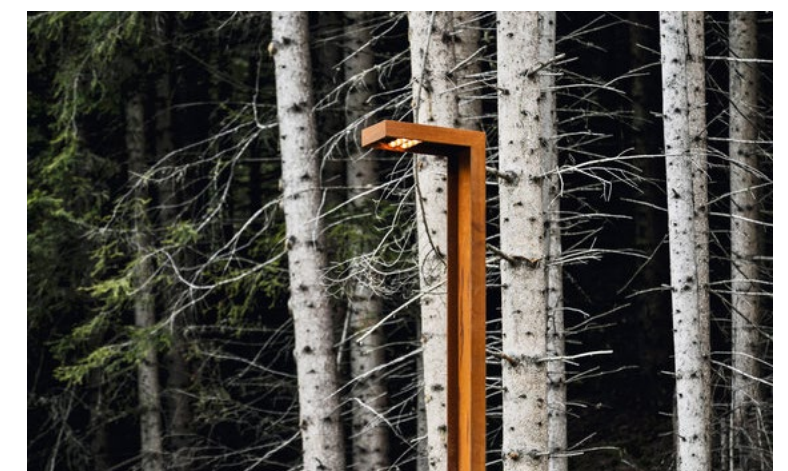
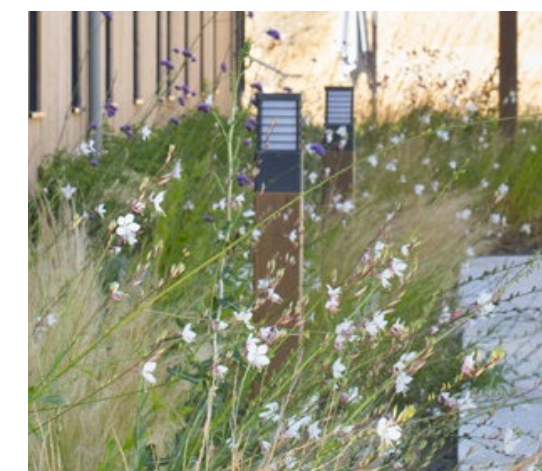
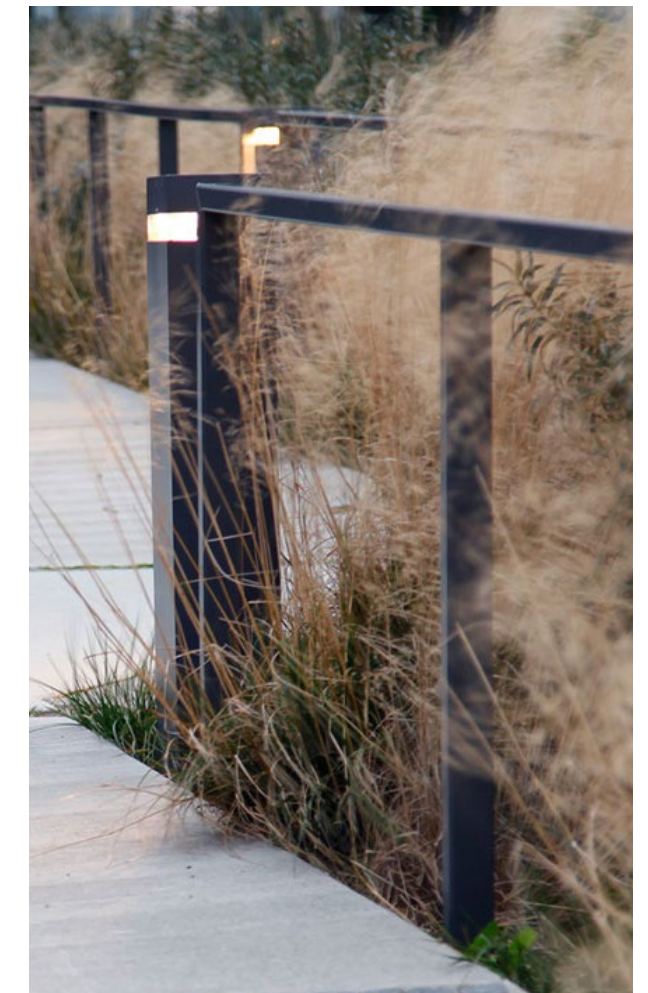
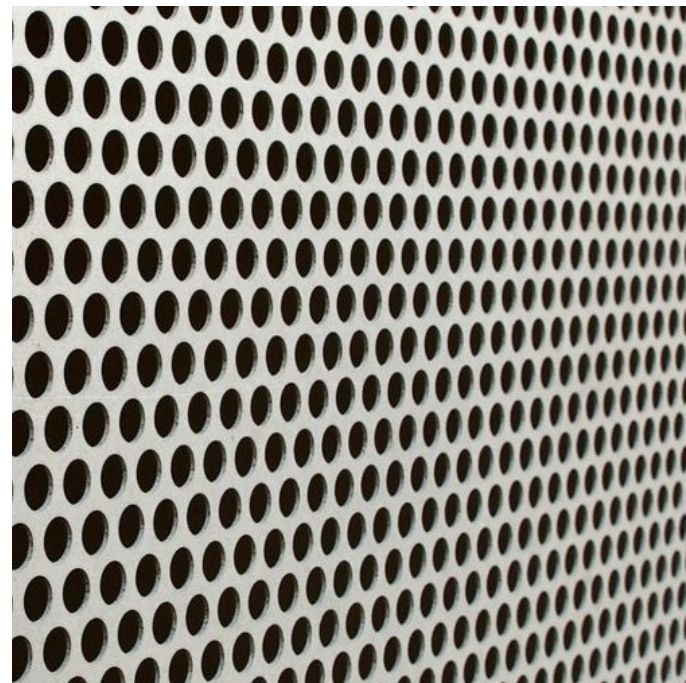
Main Entrance Space

High quality concrete paving in large unit sizes will form a strong relationship with the bold architecture of the building. Smaller scale paving will provide textural variation and visual interest.

Routes and secondary spaces

Bound surfaces will provide contrast to the treatment of primary spaces. The incorporation of graphic paint will work in conjunction with internal wayfinding and branding and add dynamic and visual interest.

04 Appearance Furniture and Features



Seating

There is opportunity to incorporate a variety of seating types that offer use to individuals or small groups. The inclusion of distinctive colour will work in conjunction with internal wayfinding and branding. Metal screens will be incorporated into the landscape to create shelter, privacy and relationship with the buildings architectural details.

Lighting

Lighting is to be both bold and contemporary in response to the proposed building, whilst remaining sympathetic to the semi-rural setting. The use of timber detailing will provide links to nearby woodland areas and a softening aesthetic. A combination of low level bollard lighting and columns will provide varying scales of illumination and character.

04 Appearance Tree Planting

Native tree species to be incorporated into the landscape include:



Salix alba - White Willow



Alnus glutinosa - Common Alder



Betula pedula - Silver Birch



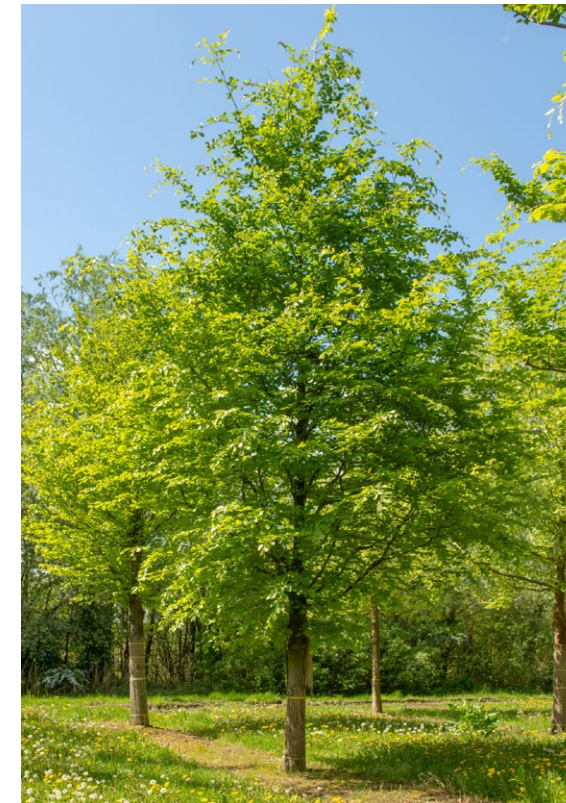
Betula nigra - River Birch / Black Birch



Crataegus monogyna - Common Hawthorn



Corylus avellana - Hazel



Fagus sylvatica - Common Beech



Sorbus aucuparia - Rowan

05 Design
Illustrative Masterplan



Beehive Mill
Jersey Street
Manchester
M4 6JF

T 0161 397 4953
E info@re-formlandscape.com

www.re-formlandscape.com

re-form
landscape architecture