

# AMRC NW

## Planning design report

April 2020

832-CPA-XX-XX-RP-A-9015

Document history

Revision	Reason for Issue	Date	Prepared by	Checked by
-	For planning	01/04/2020	LP	RP

# Contents

**1.0 Facade studies**

- 1.1 Drawing list
- 1.2 Original submission
- 1.3 Proposed submission
- 1.4 Original submission
- 1.5 Proposed submission

**2.0 Planning drawings**

- 2.1 Site plan
- 2.2 Ground floor plan
- 2.3 First floor plan
- 2.4 Second floor plan
- 2.5 Roof plan
- 2.6 Elevations - North
- 2.7 Elevations - South
- 2.8 Elevations - East
- 2.9 Elevations - West
- 2.10 Conclusion

**Confidentiality and third party responsibility**

This document is confidential to the party to whom it is addressed and their professional advisers for the specific purpose to which it refers. No responsibility is accepted to any third parties, and neither the whole, nor any part, nor reference thereto may be published or disclosed. No responsibility is accepted for the advice of the Client's independent consultants which may be reflected in our own reports.  
© Cartwright Pickard Architects Ltd.

# 1.0 Facade studies

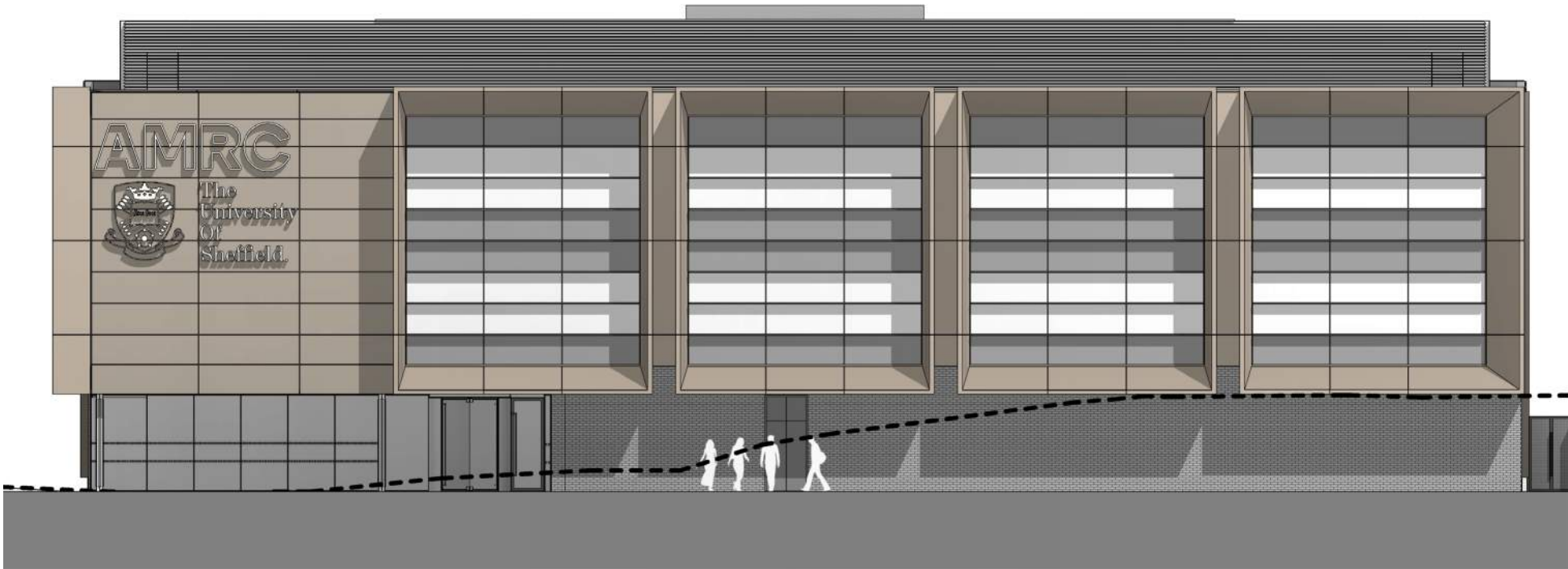
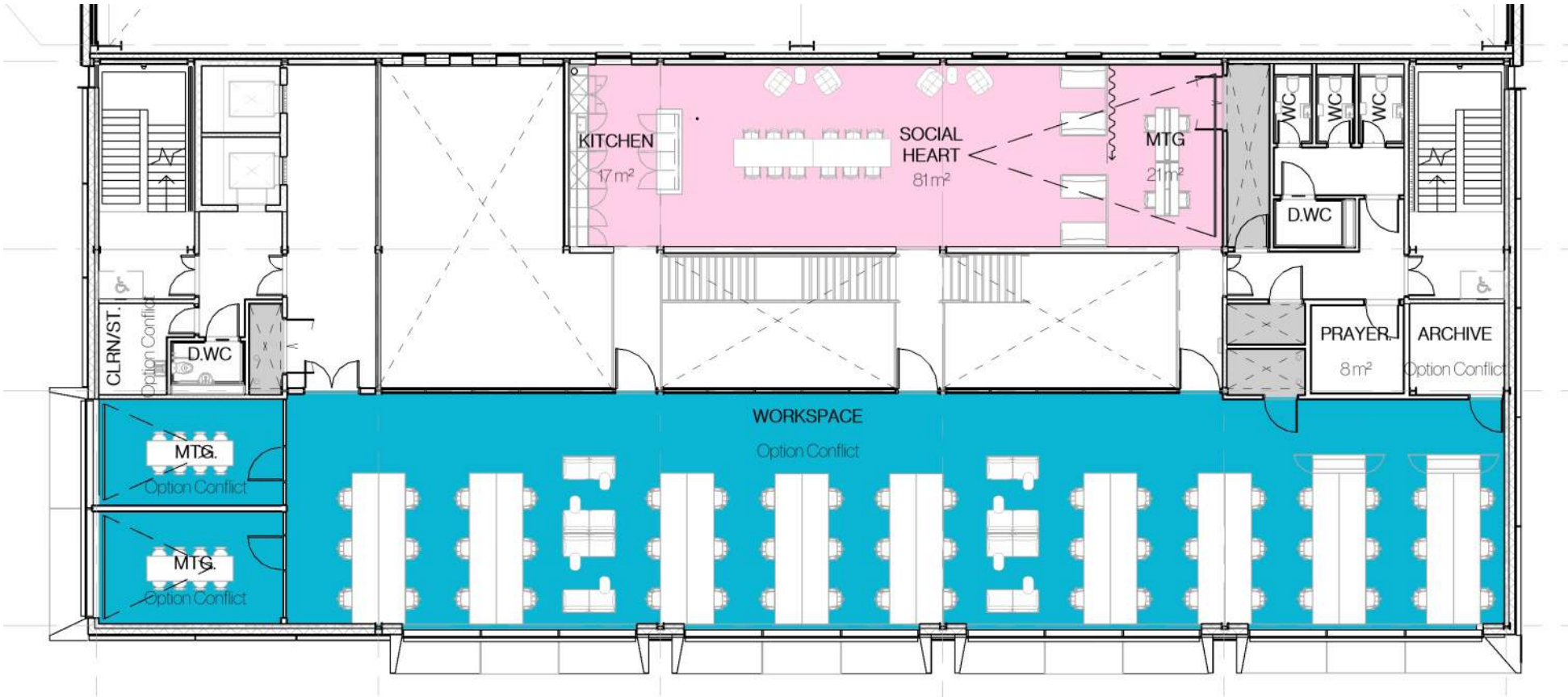


# 1.1

## Drawing list

Drawing title	Reference number	Scale	Size	Revision
Site Plan - Existing	832-CPA-ZZ-ZZ-DR-A-0010	1:1250	A3	-
Site Plan - Proposed	832-CPA-XX-ZZ-DR-A-0111	1:500	A1	B
Level 00 Floor Plan - Proposed	832-CPA-ZZ-00-DR-A-2100	1:200	A1	A
Level 01 Floor Plan - Proposed	832-CPA-ZZ-01-DR-A-2101	1:200	A1	A
Level 02 Floor Plan - Proposed	832-CPA-ZZ-02-DR-A-2102	1:200	A1	A
Level 03 Floor Plan - Proposed	832-CPA-ZZ-03-DR-A-2103	1:200	A1	A
GA Elevations - Proposed	832-CPA-ZZ-ZZ-DR-A-2200	1:200	A1	A
GA Sections - Proposed	832-CPA-ZZ-ZZ-DR-A-2205	1:200	A1	A

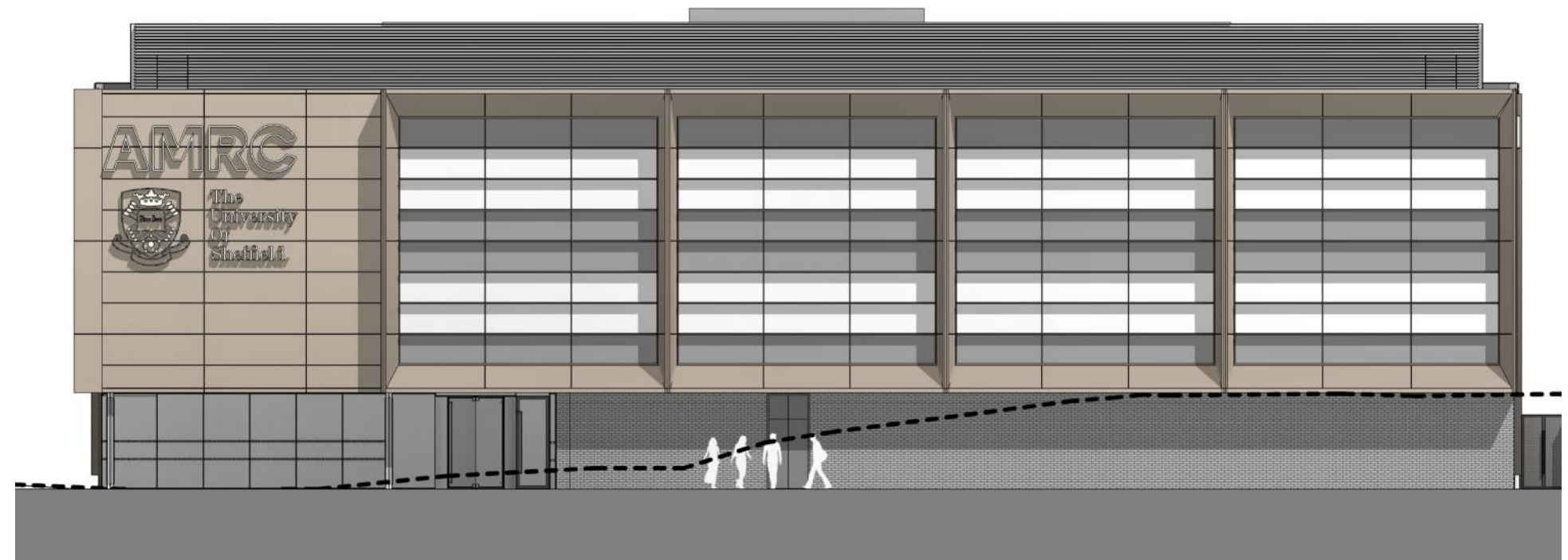
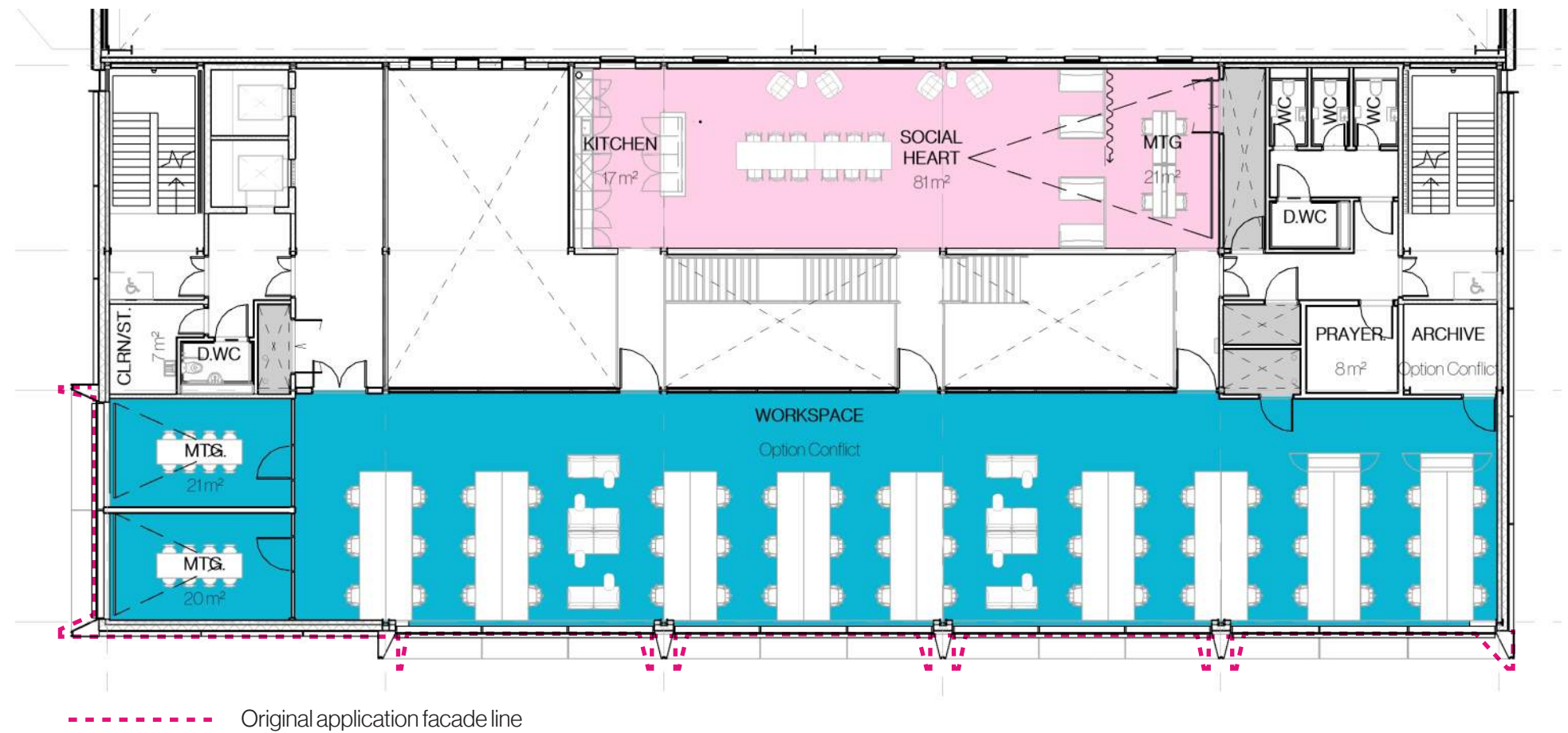
1.2  
Original submission



# 1.3 Proposed submission

## Revised submission

- Vertical articulation retained
- Separation between bays omitted
- Bay projection depth reduced from 1500mm to 750mm





## 1.4 Original submission



# 1.5

## Proposed submission

### Revised submission

- Vertical articulation retained
- Separation between bays omitted
- Bay projection depth reduced from 1500mm to 750mm
- Slot windows omitted from workshop to create a 'black box' controlled space
- Vertical fixing fins used to break down the mass of this elevation



## 2.0 Planning drawings

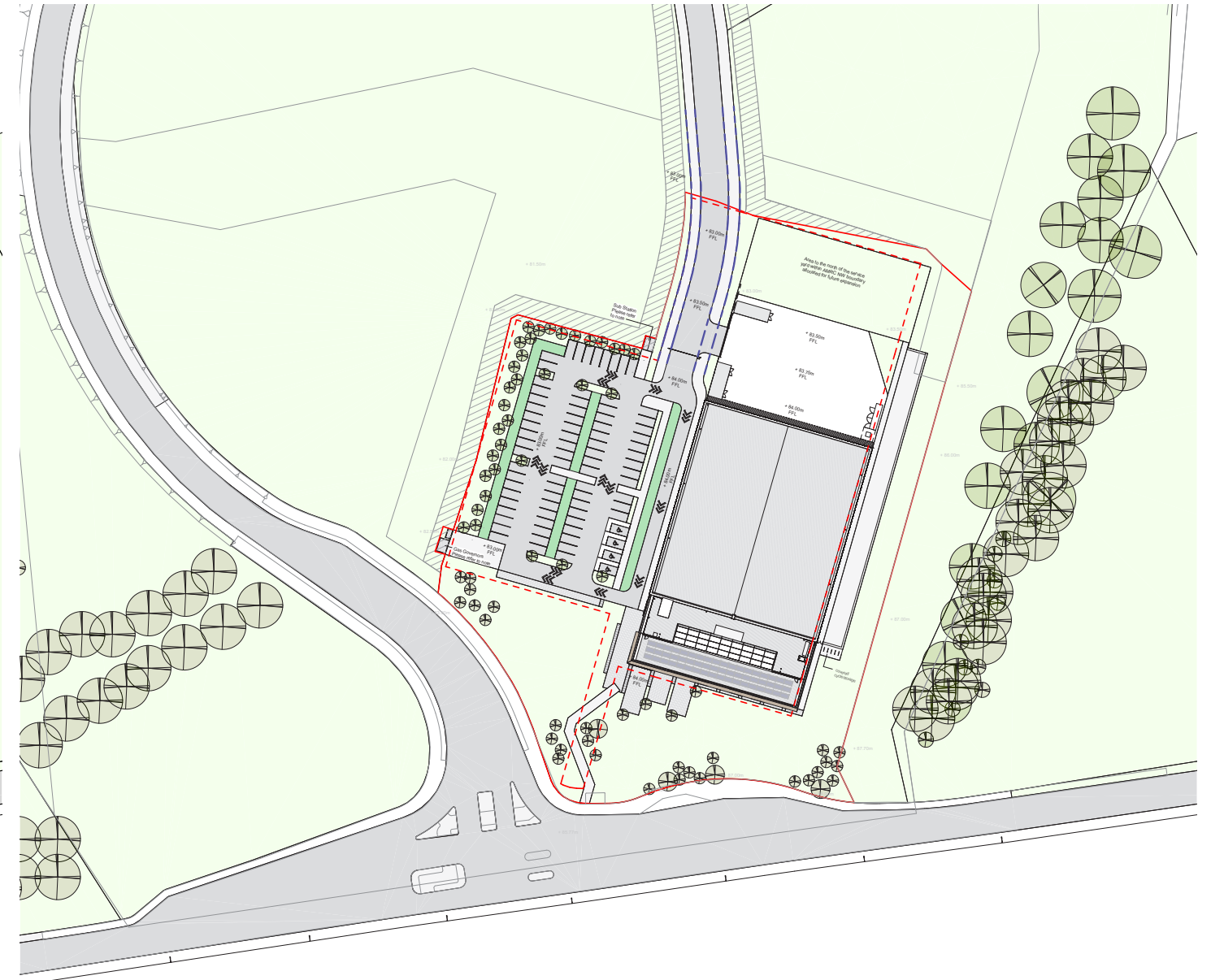


## 2.1 Site plan



### Current application

- 832-CPA-XX-ZZ-DR-A-0111 - Rev A

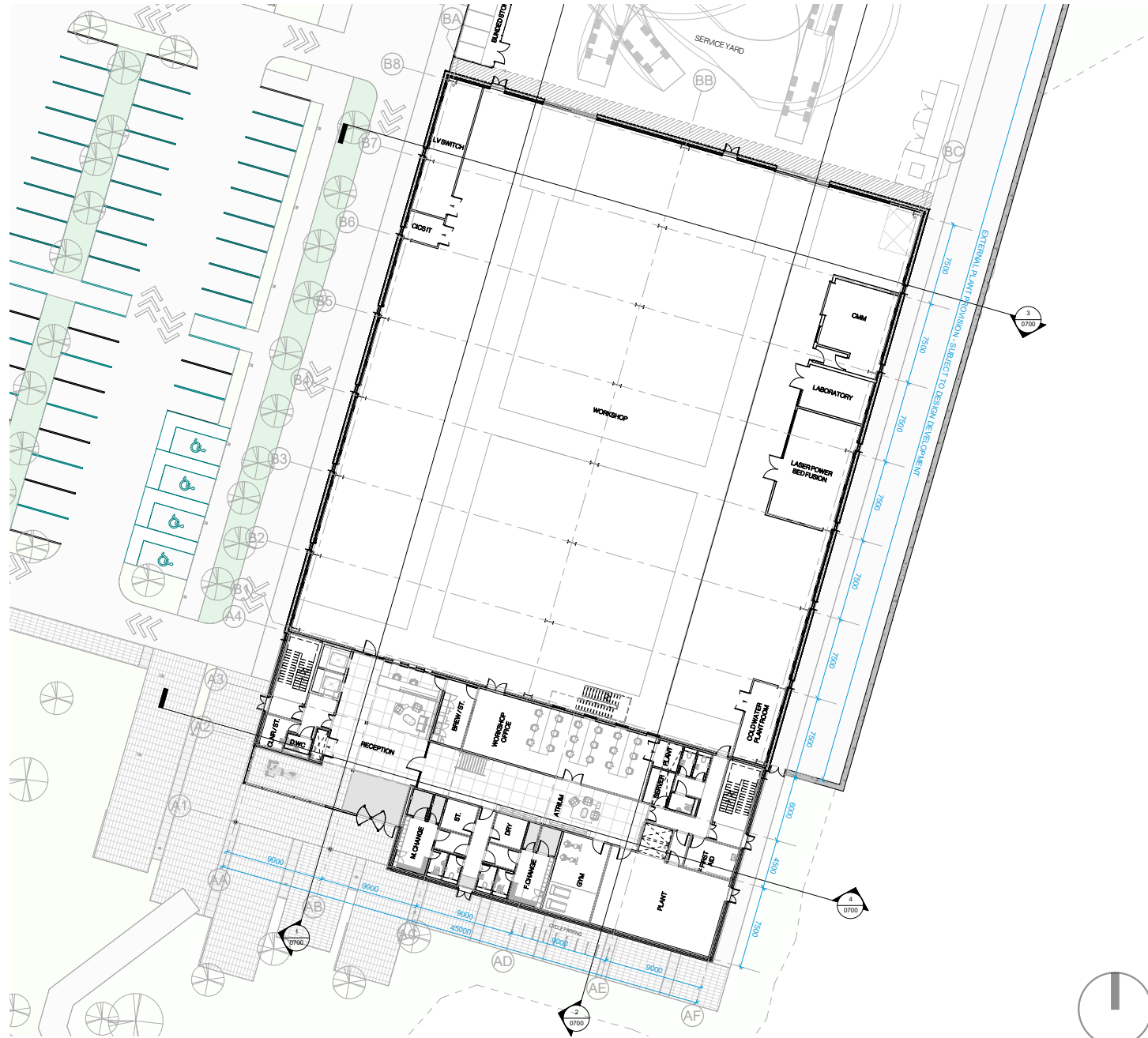


### Proposed application

- 832-CPA-XX-ZZ-DR-A-0111 - Rev B
- Tree planting reduced by 50%
- Trees removed from swale
- Planting focussed on screening car-park
- Hard standing reduced
- Service yard corner replaced with wild-flower planting zone

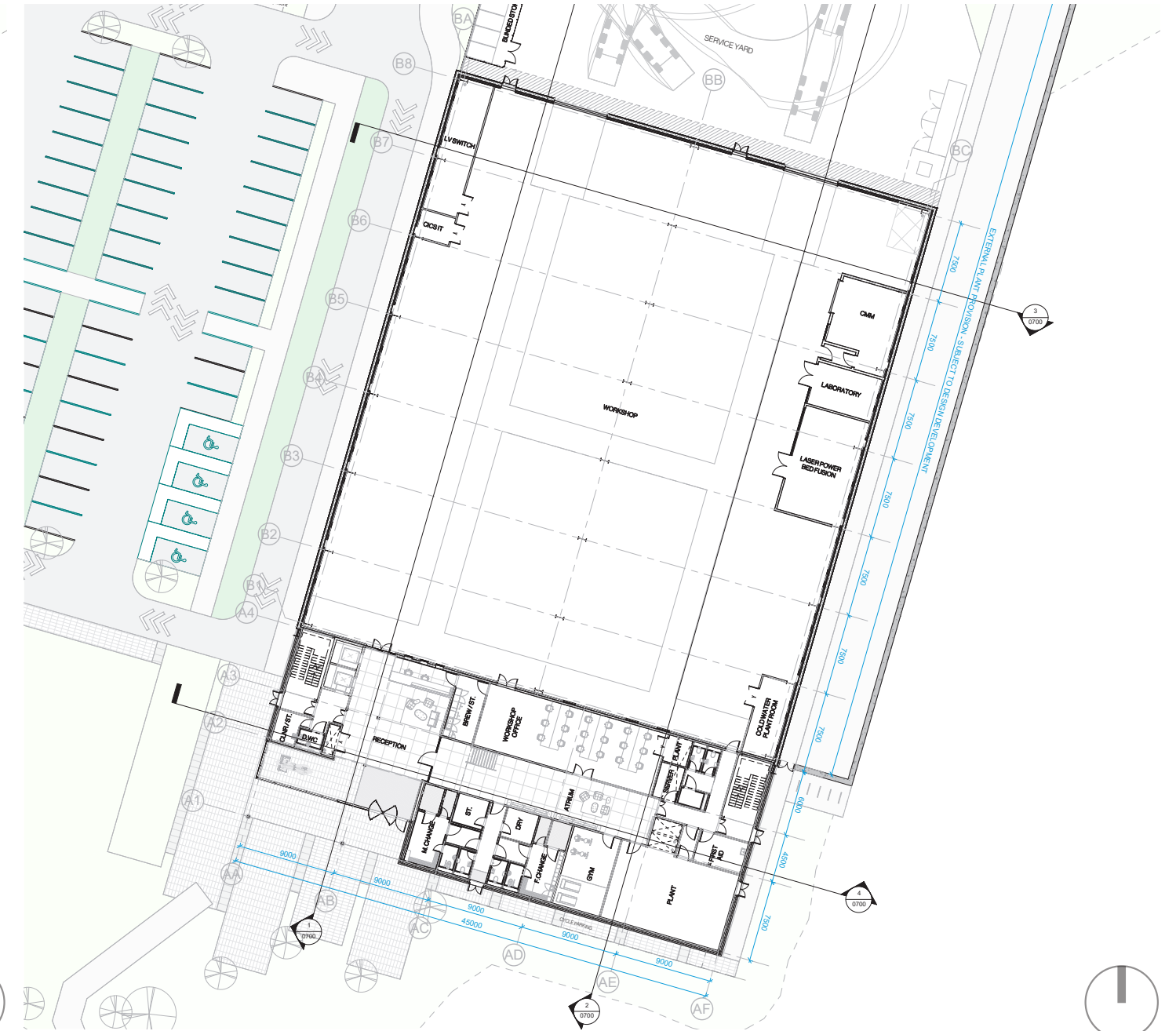


## 2.2 Ground floor plan



### Current application

- 832-CPA-ZZ-00-DR-A-2100

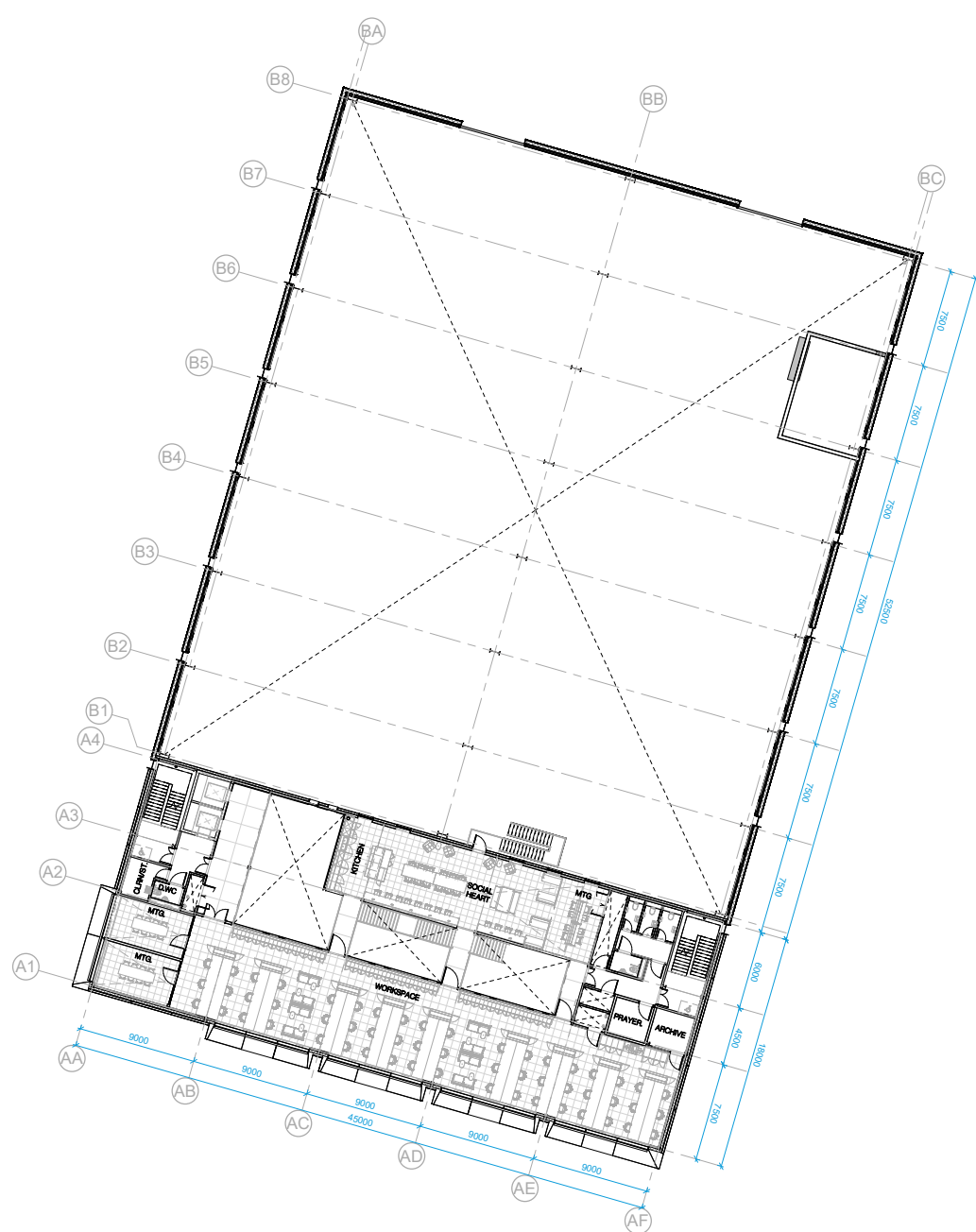


### Proposed application

- 832-CPA-ZZ-00-DR-A-2100 - Rev A
- Revisions to landscape as per site plan
- Internal configuration retained
- East and West glazing bays to workshop omitted

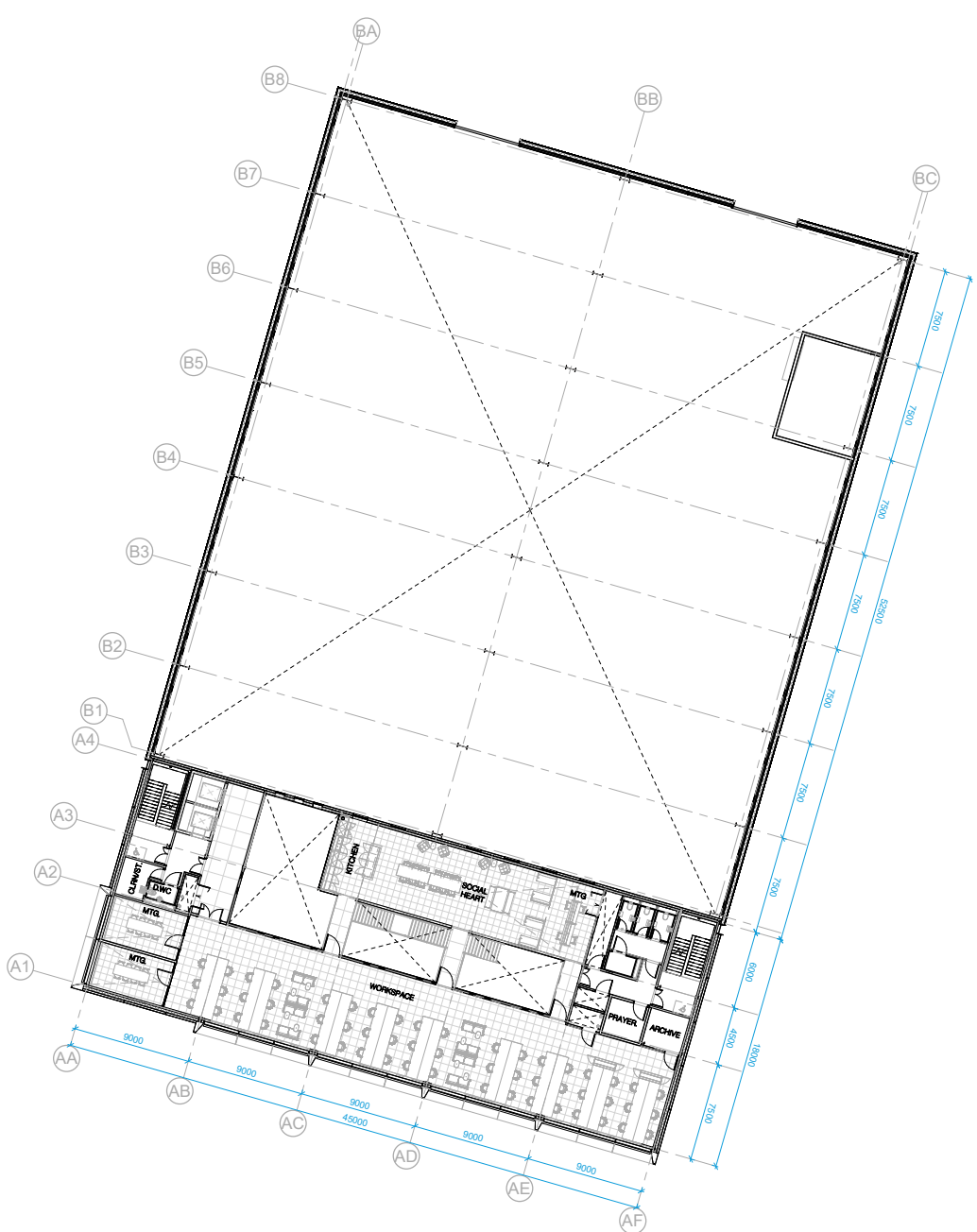


# 2.3 First floor plan



## Current application

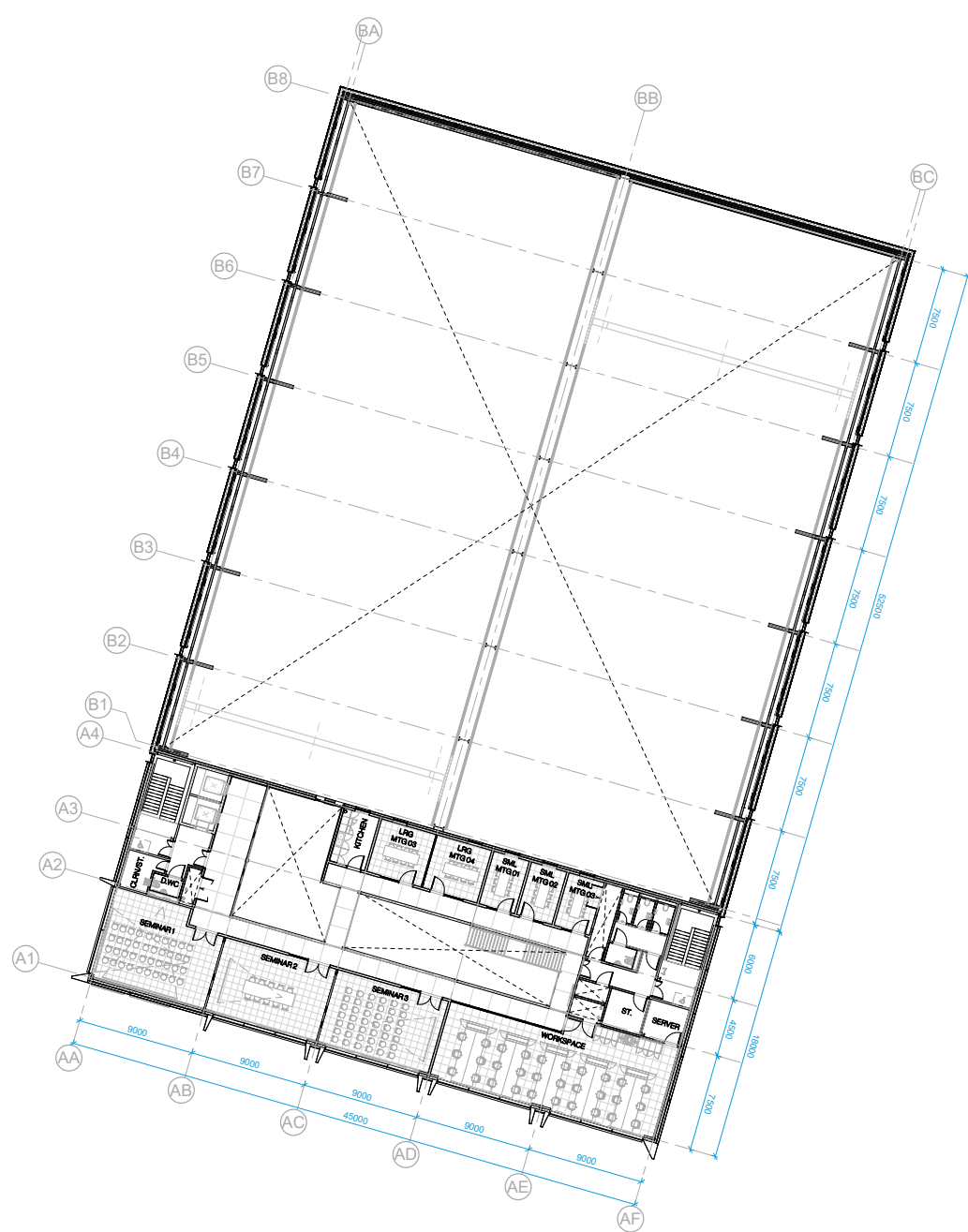
- 832-CPA-ZZ-01-DR-A-2101



## Proposed application

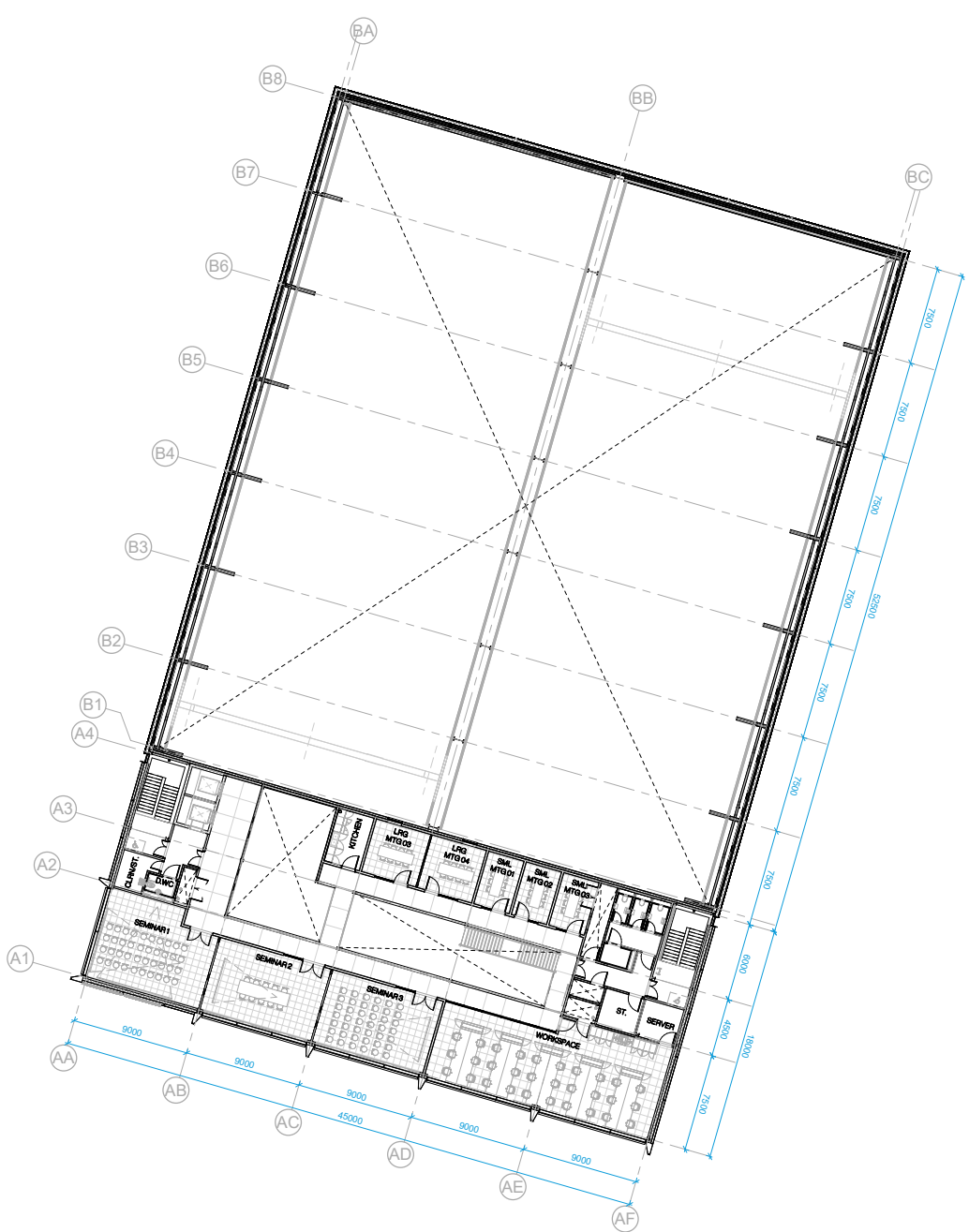
- 832-CPA-ZZ-01-DR-A-2101 - Rev A
- Internal configuration retained
- South elevation bays reduced and rationalised
- East and West glazing bays to workshop omitted

# 2.4 Second floor plan



## Current application

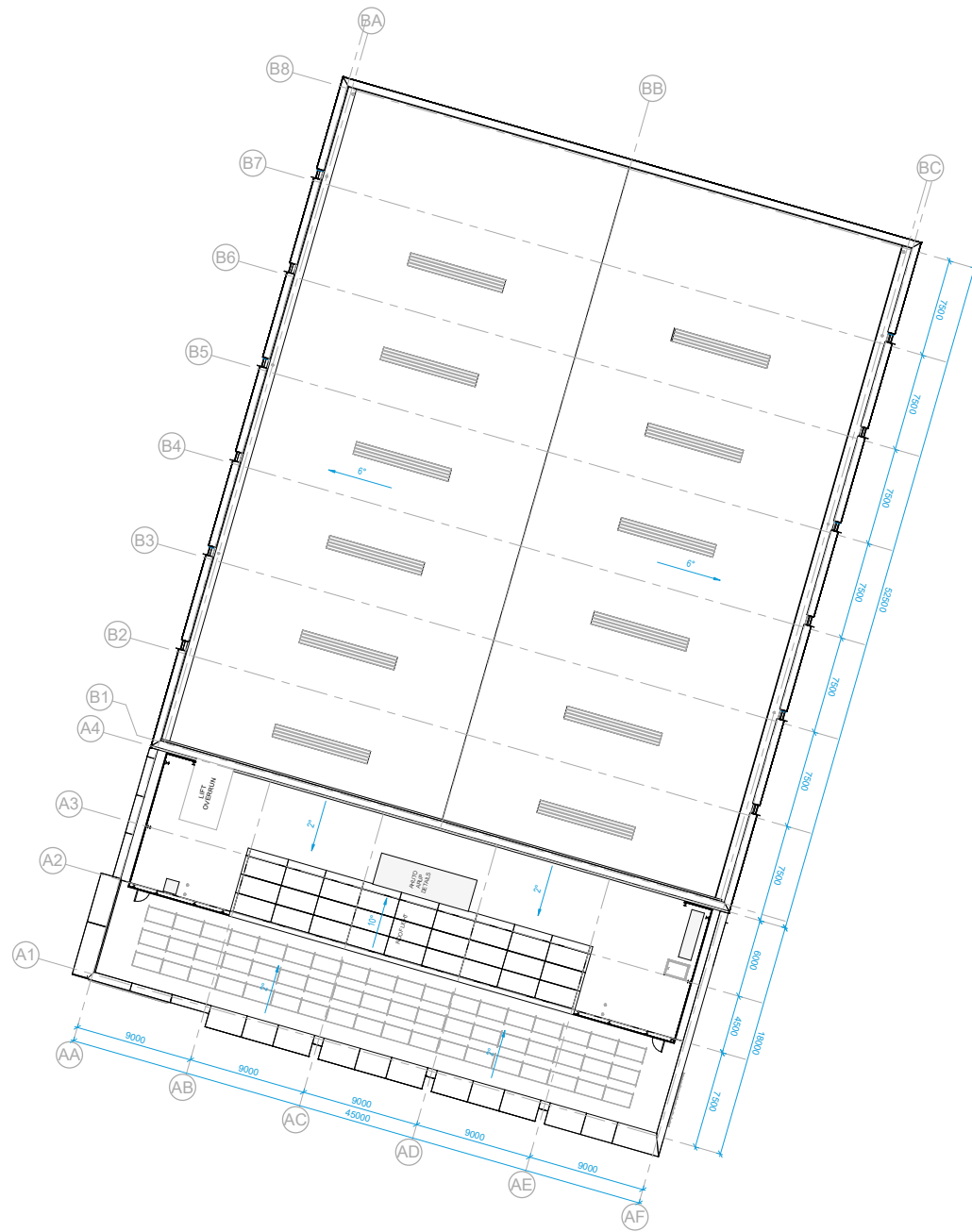
- 832-CPA-ZZ-02-DR-A-2102



## Proposed application

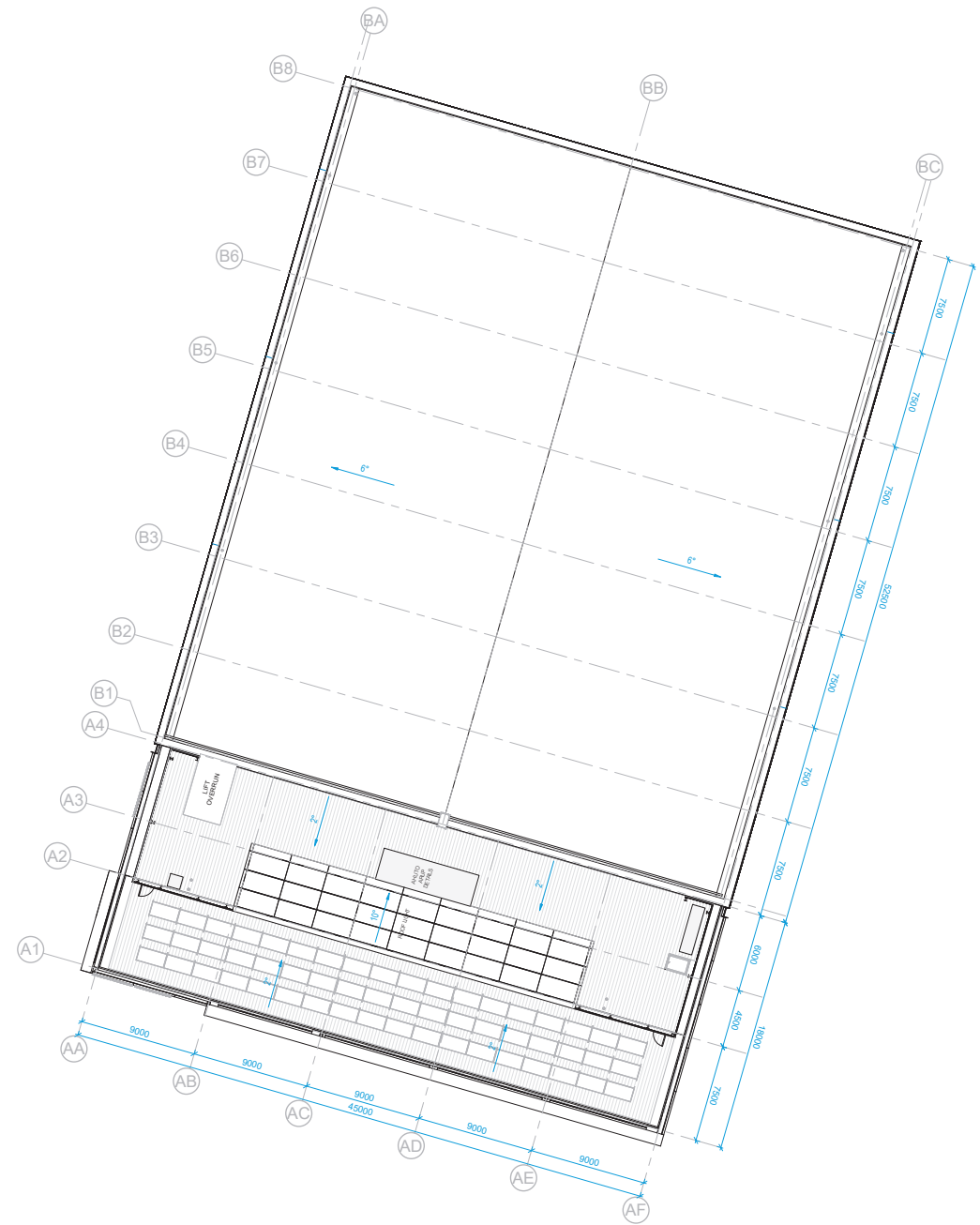
- 832-CPA-ZZ-02-DR-A-2102 - Rev A
- Internal configuration retained
- South elevation bays reduced and rationalised
- East and West glazing bays to workshop omitted

## 2.5 Roof plan



## Current application

- 832-CPA-ZZ-03-DR-A-2103



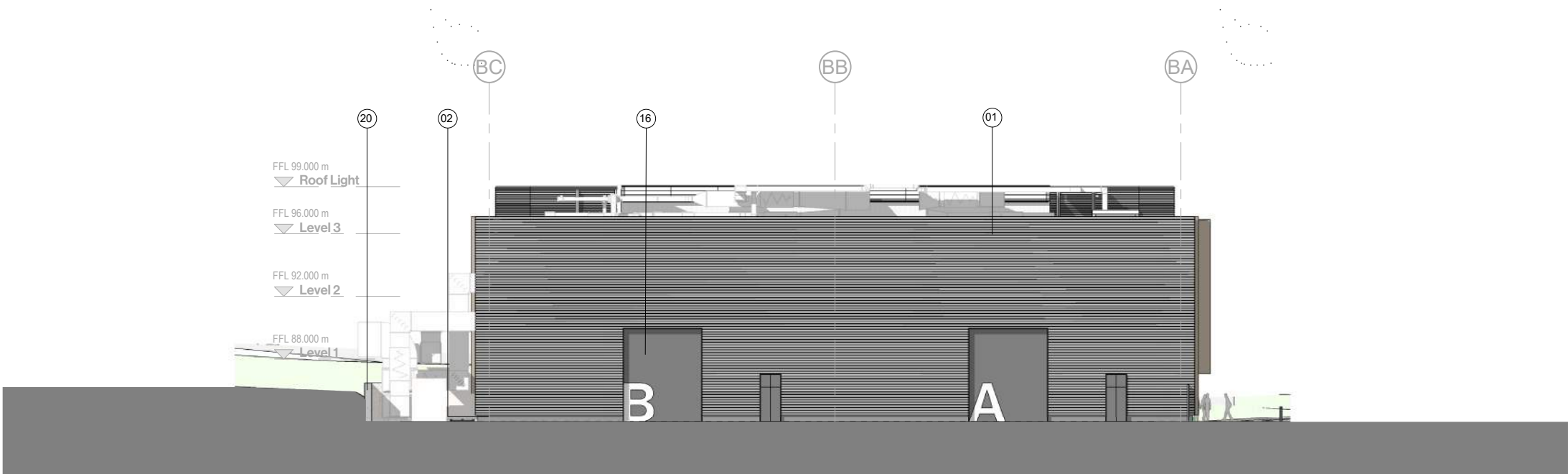
## Proposed application

- 832-CPA-ZZ-03-DR-A-2103 - Rev A
  - Roof configuration retained
  - South elevation bays reduced and rationalised
  - Roof-lights omitted to workshop
- Black box proposed for controlled environment in workshop

# 2.6 Elevations - North

## Proposed application

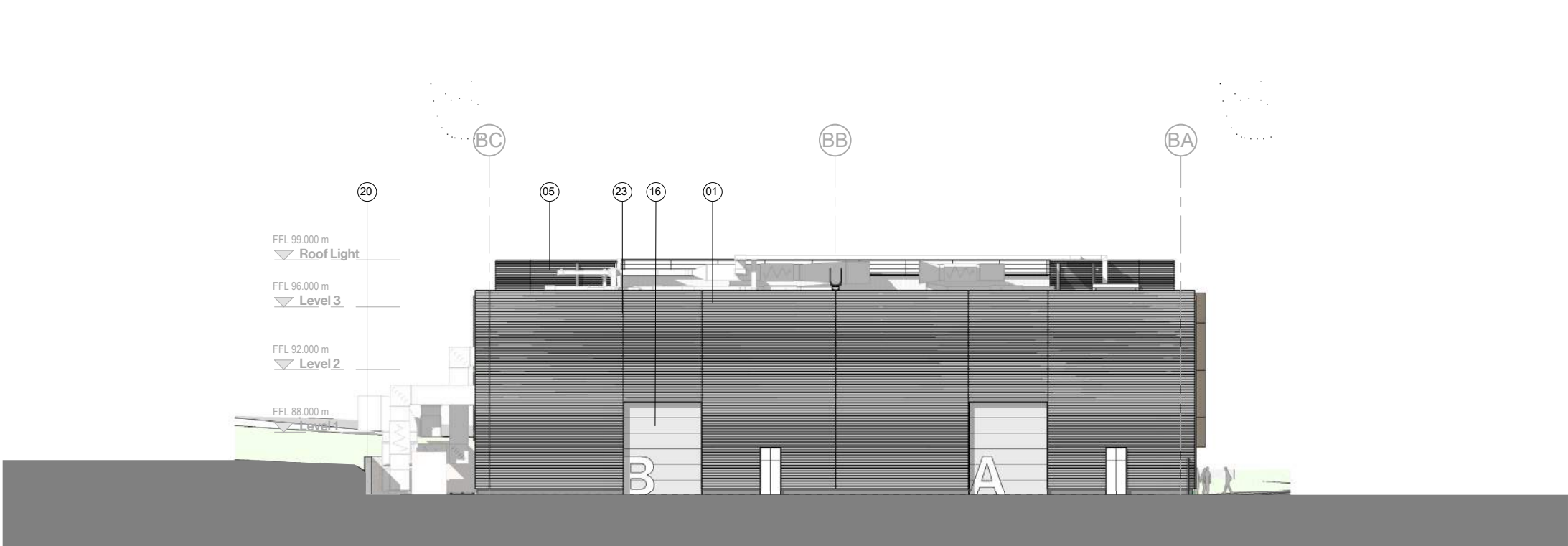
- 832-CPA-ZZ-ZZ-DR-A-2200 - Rev A
- Vertical panel separation joints added to horizontally profiled metal cladding panels
- Configuration remains the same



## Current application

## Material Key

- Sinusoidal Metal Cladding Finish Colour - Silver
- Facing Brick Finish Colour - Dark Grey
- Flat Metal Panel Finish Colour - Light Bronze
- Perforated Metal Panel Finish Colour - Light Bronze
- Plant Screen Louvres Finish Colour - Silver
- Metal Faced Door Finish Colour - Dark Grey
- Opaque Glazing Panel Finish Colour - Dark Grey
- Translucent Glazing Panel Finish Colour - White
- Curtain Wall Mullion / Transom Finish Colour - Light Bronze
- Slim Profile Capping Finish Colour - Light Grey
- Curtain Wall Glazing Finish Colour - Clear
- Weld-mesh / Grating Finish Colour - TBC
- Metal Infill Panel Finish Colour - Light Bronze
- Signage Finish Colour - TBC
- Roof Plant Zone (office only) Finish - TBC
- Roller Shutter Door Finish Colour - Silver
- External Steel Coating Finish Colour - Dark Grey
- Weld-mesh / Grating Finish Colour - TBC
- Manual Sliding Gate with 18 infill
- Gabion Retaining Wall
- C/W - mullions / Transoms Finish Colour - Dark Grey
- Outline MEP proposals Subject to development
- Vertical fin panel break on grid lines Finish Colour - TBC



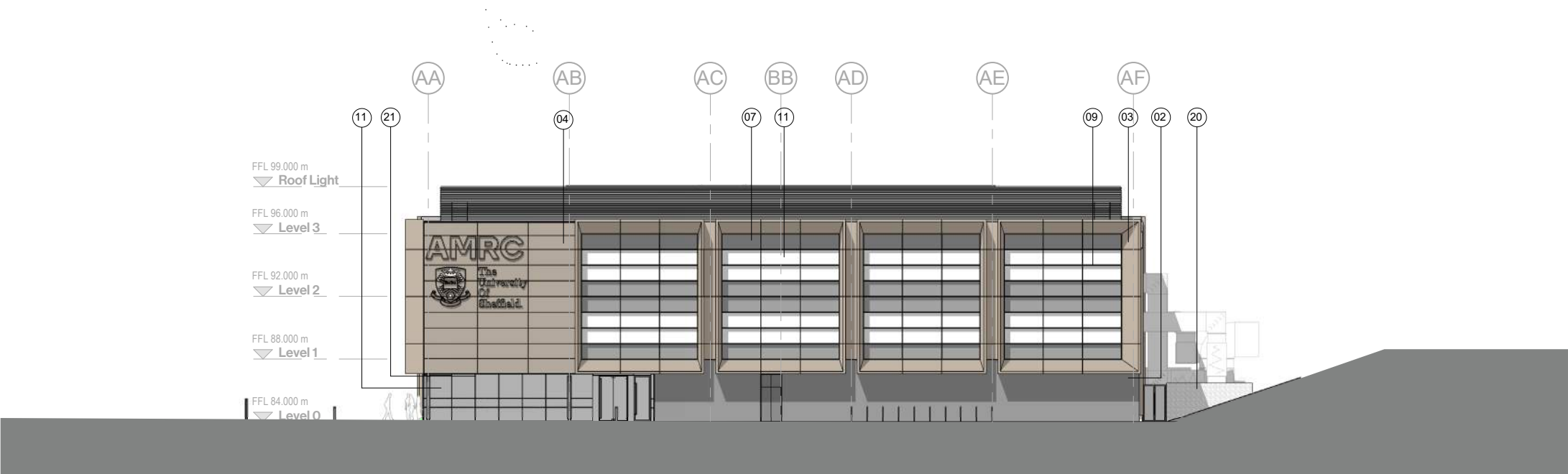
## Proposed application



# 2.7 Elevations - South

## Proposed application

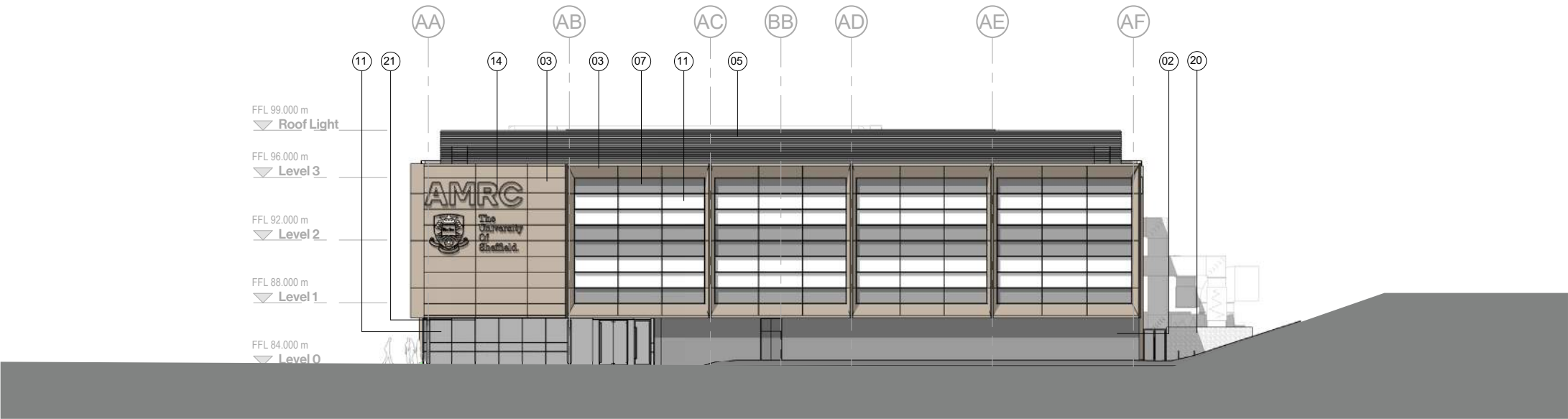
- 832-CPA-ZZ-ZZ-DR-A-2200 - Rev A
- Perforated metal cladding replaced with solid metal cladding panels
- Projected bays reduced from 1500mm to 750mm
- Separation between bay frames omitted to rationalise the design
- Chamfer retained to the framing
- Configuration remains largely the same



## Current application

## Material Key

1. Sinusoidal Metal Cladding Finish Colour - Silver
2. Facing Brick Finish Colour - Dark Grey
3. Flat Metal Panel Finish Colour - Light Bronze
4. Perforated Metal Panel Finish Colour - Light Bronze
5. Plant Screen Louvres Finish Colour - Silver
6. Metal Faced Door Finish Colour - Dark Grey
7. Opaque Glazing Panel Finish Colour - Dark Grey
8. Translucent Glazing Panel Finish Colour - White
9. Curtain Wall Mullion / Transom Finish Colour - Light Bronze
10. Slim Profile Capping Finish Colour - Light Grey
11. Curtain Wall Glazing Finish Colour - Clear
12. Weld-mesh / Grating Finish Colour - TBC
13. Metal Infill Panel Finish Colour - Light Bronze
14. Signage Finish Colour - TBC
15. Roof Plant Zone (office only) Finish - TBC
16. Roller Shutter Door Finish Colour - Silver
17. External Steel Coating Finish Colour - Dark Grey
18. Weld-mesh / Grating Finish Colour - TBC
19. Manual Sliding Gate with 18 infill
20. Gabion Retaining Wall
21. C/W - mullions / Transoms Finish Colour - Dark Grey
22. Outline MEP proposals Subject to development
23. Vertical fin panel break on grid lines Finish Colour - TBC



## Proposed application

# 2.8 Elevations - East

## Proposed application

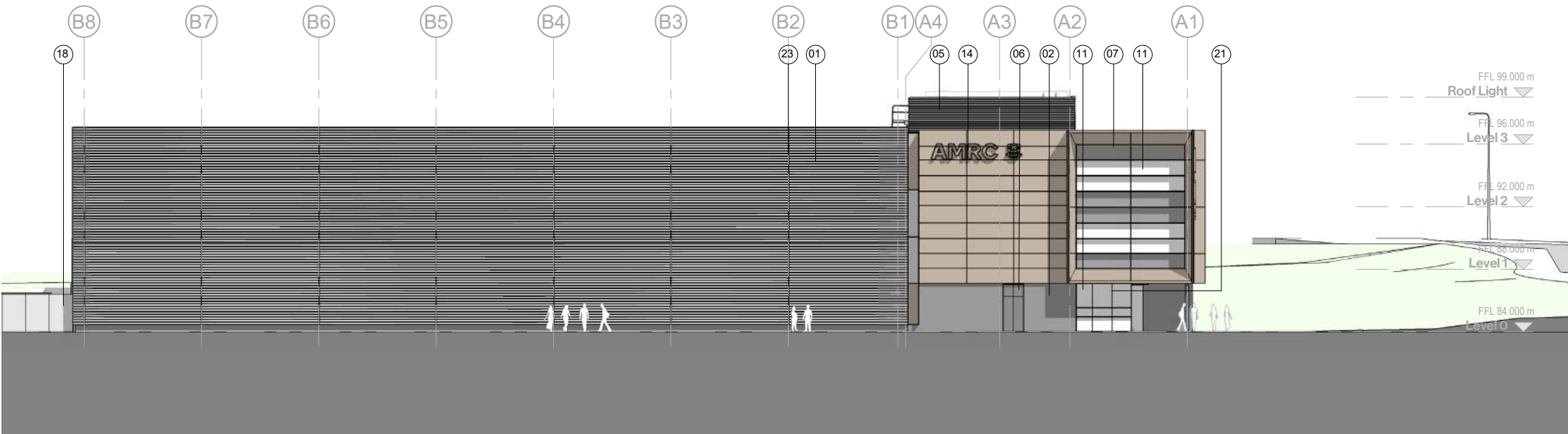
- 832-CPA-ZZ-ZZ-DR-A-2200 - Rev A
- Perforated metal cladding replaced with solid metal cladding panels
- Configuration remains largely the same
- Glazing slots removed from the workshop elevation



## Current application

## Material Key

1. Sinusoidal Metal Cladding Finish Colour - Silver
2. Facing Brick Finish Colour - Dark Grey
3. Flat Metal Panel Finish Colour - Light Bronze
4. Perforated Metal Panel Finish Colour - Light Bronze
5. Plant Screen Louvres Finish Colour - Silver
6. Metal Faced Door Finish Colour - Dark Grey
7. Opaque Glazing Panel Finish Colour - Dark Grey
8. Translucent Glazing Panel Finish Colour - White
9. Curtain Wall Mullion / Transom Finish Colour - Light Bronze
10. Slim Profile Capping Finish Colour - Light Grey
11. Curtain Wall Glazing Finish Colour - Clear
12. Weld-mesh / Grating Finish Colour - TBC
13. Metal Infill Panel Finish Colour - Light Bronze
14. Signage Finish Colour - TBC
15. Roof Plant Zone (office only) Finish - TBC
16. Roller Shutter Door Finish Colour - Silver
17. External Steel Coating Finish Colour - Dark Grey
18. Weld-mesh / Grating Finish Colour - TBC
19. Manual Sliding Gate with 18 infill
20. Gabion Retaining Wall
21. C/W - mullions / Transoms Finish Colour - Dark Grey
22. Outline MEP proposals Subject to development
23. Vertical fin panel break on grid lines Finish Colour - TBC



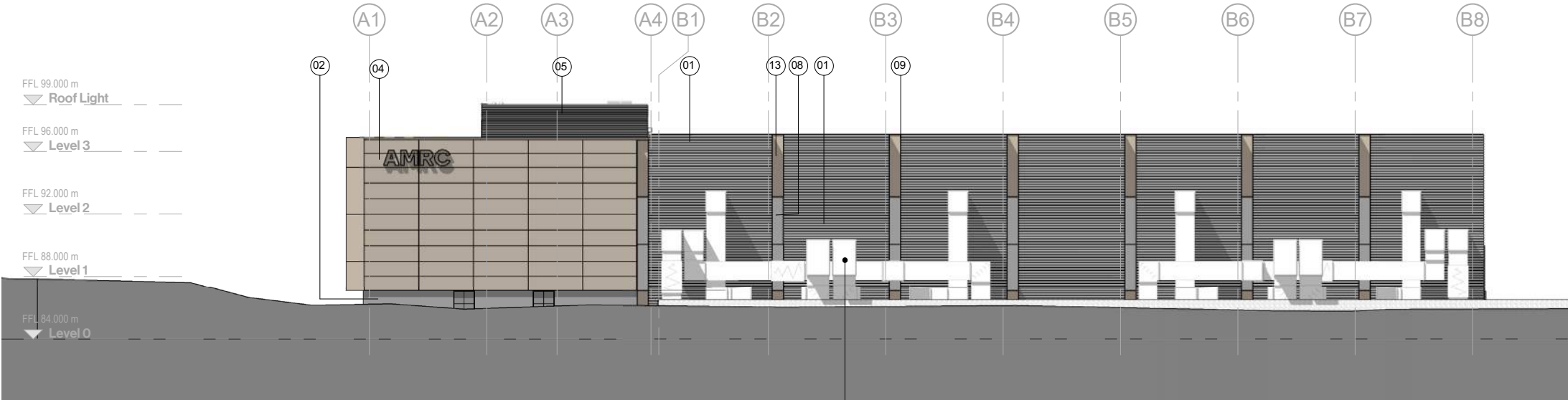
## Proposed application

# 2.9

## Elevations - West

### Proposed application

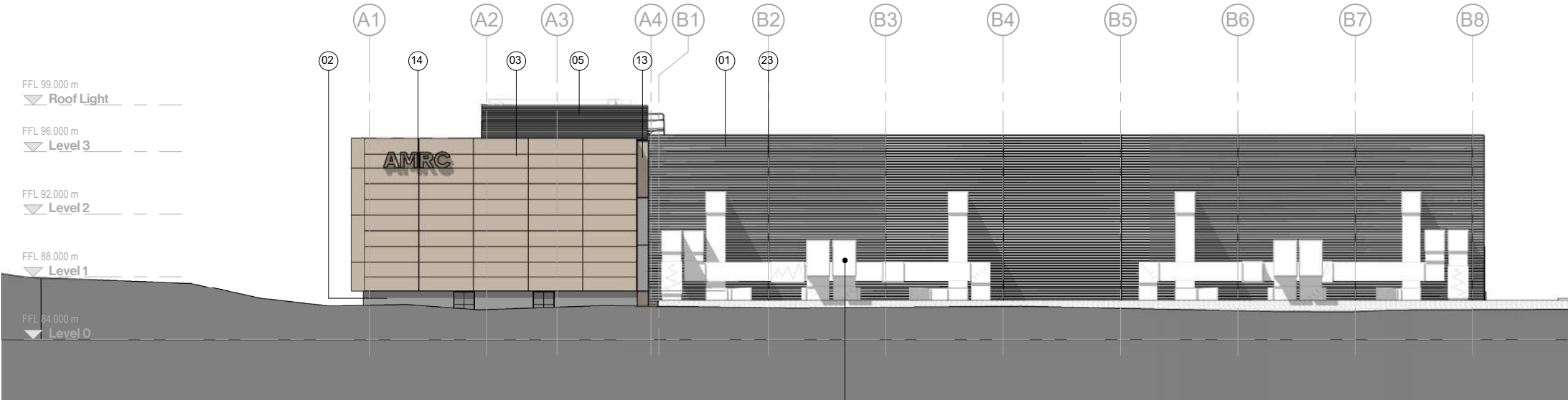
- 832-CPA-ZZ-ZZ-DR-A-2200 - Rev A
- Perforated metal cladding replaced with solid metal cladding panels
- Configuration remains largely the same
- Glazing slots removed from the workshop elevation



### Current application

### Material Key

1. Sinusoidal Metal Cladding Finish Colour - Silver
2. Facing Brick Finish Colour - Dark Grey
3. Flat Metal Panel Finish Colour - Light Bronze
4. Perforated Metal Panel Finish Colour - Light Bronze
5. Plant Screen Louvres Finish Colour - Silver
6. Metal Faced Door Finish Colour - Dark Grey
7. Opaque Glazing Panel Finish Colour - Dark Grey
8. Translucent Glazing Panel Finish Colour - White
9. Curtain Wall Mullion / Transom Finish Colour - Light Bronze
10. Slim Profile Capping Finish Colour - Light Grey
11. Curtain Wall Glazing Finish Colour - Clear
12. Weld-mesh / Grating Finish Colour - TBC
13. Metal Infill Panel Finish Colour - Light Bronze
14. Signage Finish Colour - TBC
15. Roof Plant Zone (office only) Finish - TBC
16. Roller Shutter Door Finish Colour - Silver
17. External Steel Coating Finish Colour - Dark Grey
18. Weld-mesh / Grating Finish Colour - TBC
19. Manual Sliding Gate with 18 infill
20. Gabion Retaining Wall
21. C/W - mullions / Transoms Finish Colour - Dark Grey
22. Outline MEP proposals Subject to development
23. Vertical fin panel break on grid lines Finish Colour - TBC



### Proposed application



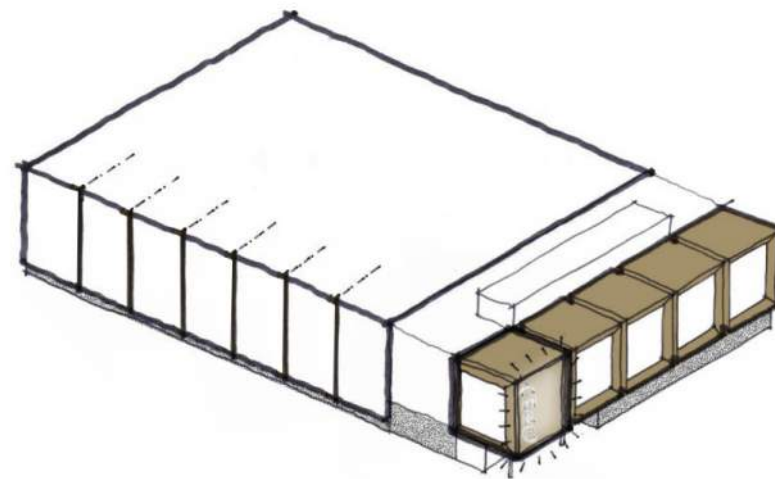
## 2.10 Conclusion



Current application - draft view



Proposed application - draft view



### Conclusion

- By retaining the key architectural features such as the south framing we trust this revised scheme aligns with the original architectural aspirations for this prominent gateway site
- The original materials have been retained and rationalised to deliver an honest articulation of internal functions
- The workshop volume is required to be a 'black box' controlled space which is reflected in the updated design



# CARTWRIGHT PICKARD

**cartwrightpickard.com**

 **@cartpickarch**

 **@cartwrightpickard**

**London Studio**

1 Canal Side Studios  
8-14 St Pancras Way  
London NW1 0QG  
T 020 7554 3830

**Manchester Studio**

Unit 308, Ducie House  
Ducie Street  
Manchester M1 2JW  
T 0161 914 7444

**Leeds Studio**

Studio 4, Cross York Street Studios  
Cross York Street  
Leeds LS2 7BL  
T 0113 360 9444