

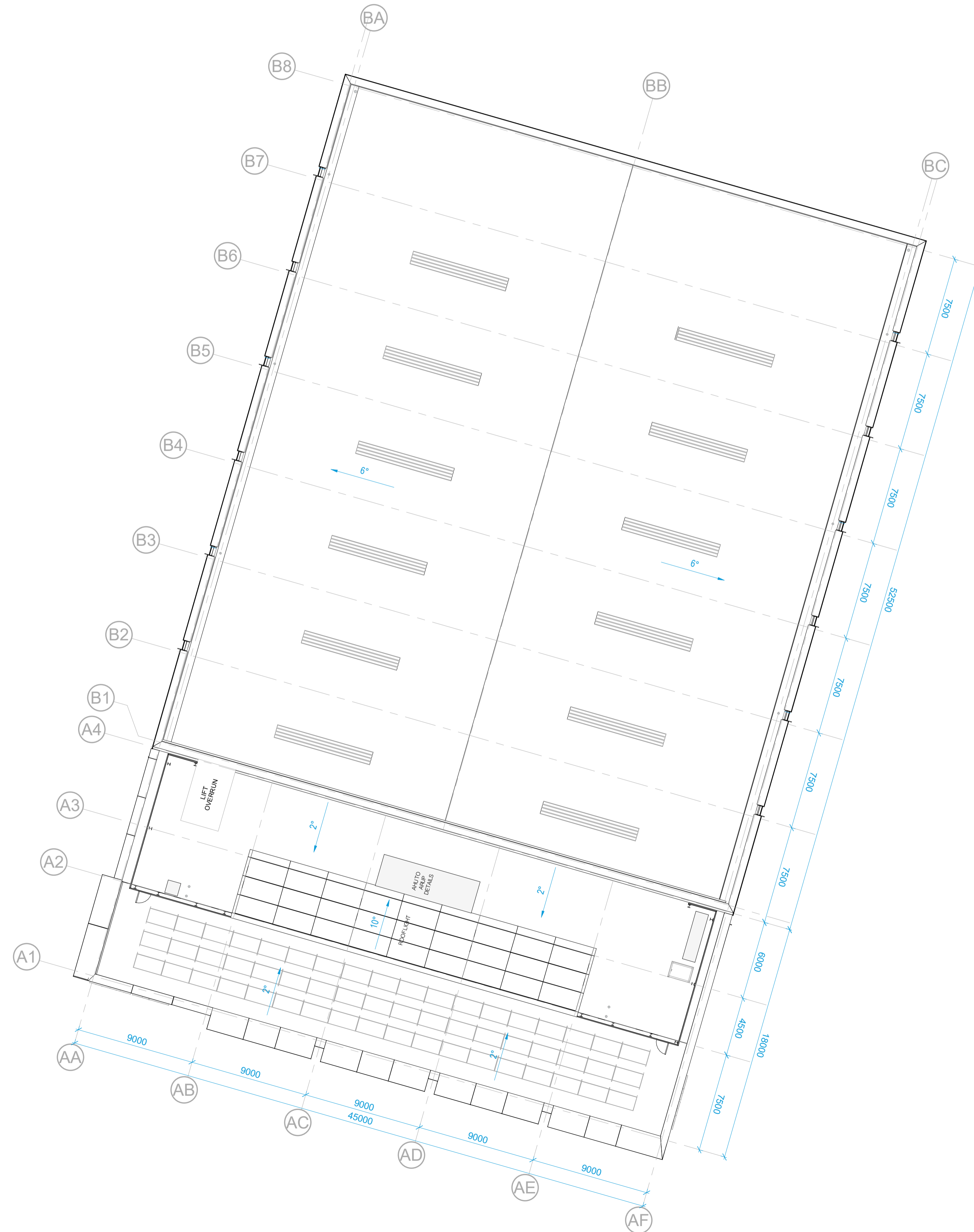
Notes
Unless indicated, this drawing is for information only and should not be used for construction. Do not scale, use figured dimensions only. All dimensions to be checked on site. This drawing should be printed and read at the original size, as stated above. Cartwright Pickard Architects accepts no responsibility for errors that occur as a result of reviewing this drawing at any other size.

Cartwright Pickard Architects prepared this drawing using Revit 2019.2 and does not accept liability for any loss or degradation of that information held in the drawing resulting from the translation from the original file format to any other file format or from the recipient's reading of it in any other programme or an earlier version of the programme referred to above. Cartwright Pickard Architects accepts no liability for use of this drawing by parties other than the party for whom it was prepared or for purposes other than those for which it was prepared.

DWG Issues
When this drawing is issued in DWG format it is an uncontrolled version and is provided to enable the recipient to prepare its own documents/drawings for which it is solely responsible. It is based on background information current at the time of issue.

Cartwright Pickard Architects accepts no liability for any alterations to additions to or discrepancies arising out of changes to such background information which occur after it has been issued by Cartwright Pickard Architects.

Drawing Revisions			
Date:	Rev:	Note:	Check:
07.11.19	-	For Planning	LP



CARTWRIGHT
PICKARD

Client
The University of Sheffield / AMRC NW

Project
832 AMRC North West

Building Name
AMRC NW

Drawing Title
Floor Plan - Roof

Scale
1:200 @ A1

Drawing Created
06.11.19

Drawing Status
For Planning

Revision
-

Drawing No.
832-CPA-ZZ-03-DR-A-2103

Manchester Office
Unit 32/33 Duxford House
Duxford Street
Manchester M1 2JW
Tel: 0161 944 7444

cartwrightpickard.com
© Cartwright Pickard Architects Ltd.

