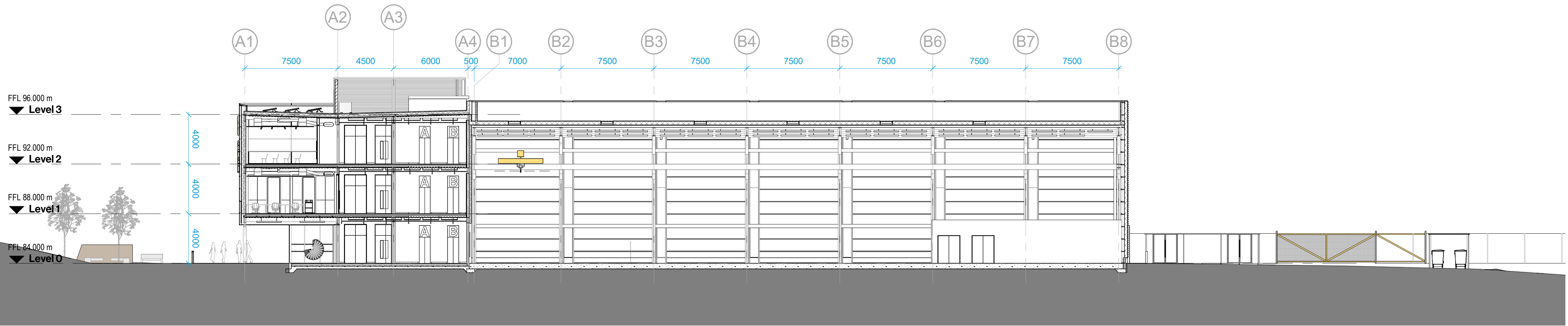


Notes  
Unless indicated, this drawing is for information only and should not be used for construction. Do not scale, use figured dimensions only. All dimensions to be checked on site. This drawing should be printed and read at the original size, as stated above. Cartwright Pickard Architects accepts no responsibility for errors that occur as a result of reviewing this drawing at any other size.

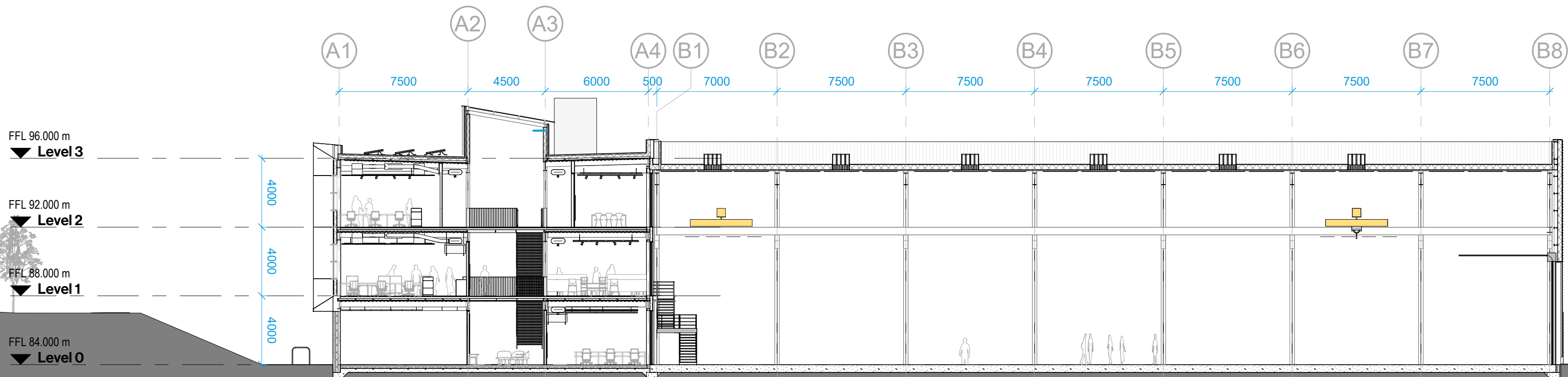
Cartwright Pickard Architects prepared this drawing using Revit 2019.2 and does not accept liability for any loss or degradation of that information held in the drawing resulting from the translation from the original file format to any other file format or from the recipient's reading of it in any other programme or an earlier version of the programme referred to above. Cartwright Pickard Architects accepts no liability for use of this drawing by parties other than the party for whom it was prepared or for purposes other than those for which it was prepared.

DWG Issues  
When this drawing is issued in DWG format it is an uncontrolled version and is provided to enable the recipient to prepare its own documents/drawings for which it is solely responsible. It is based on background information current at the time of issue.

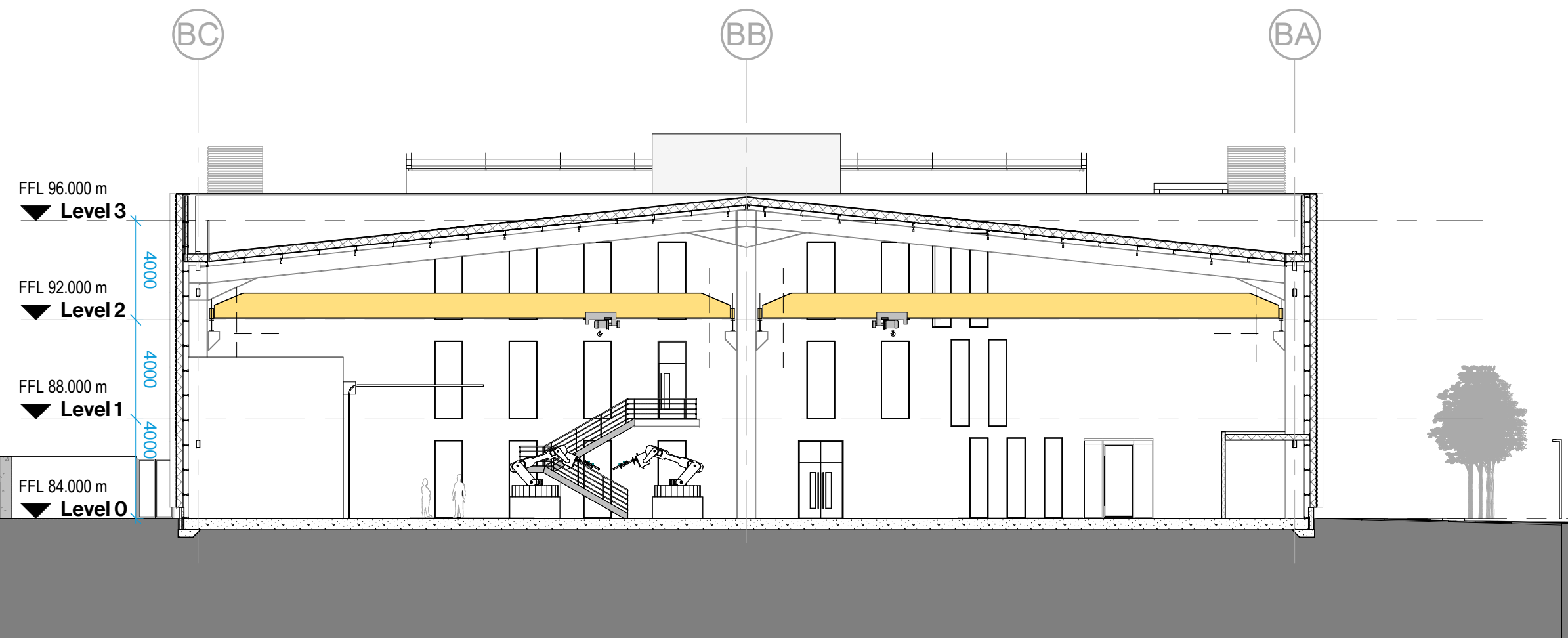
Cartwright Pickard Architects accepts no liability for any alterations to, additions to or discrepancies arising out of changes to such background information which occur after it has been issued by Cartwright Pickard Architects.



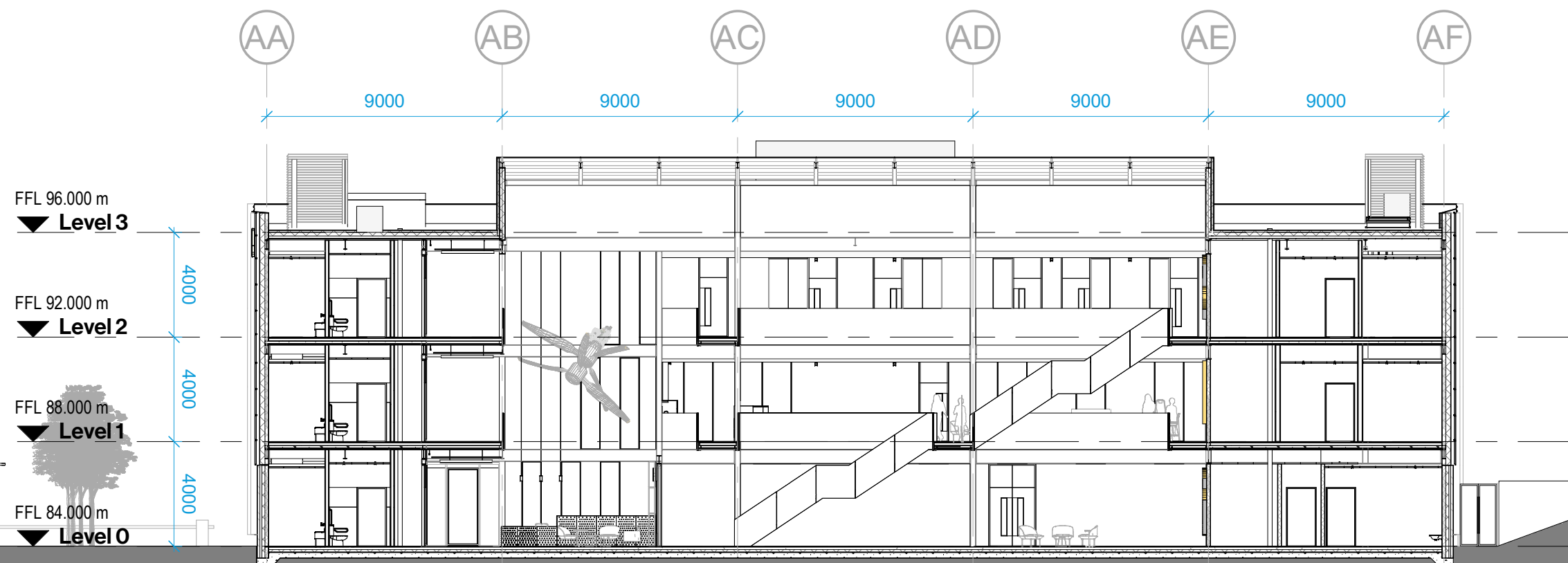
1 Section A (Planning)  
1 : 200



2 Section B (Planning)  
1 : 200



3 Section C (Planning)  
1 : 200



4 Section D (Planning)  
1 : 200

Drawing Revisions				Check:
Date:	Rev:	Note:		LP
07.11.19	-	For Planning		

CARTWRIGHT  
PICKARD

Client  
The University of Sheffield / AMRC NW

Project  
832 AMRC North West

Building Name  
AMRC NW

Drawing Title  
Site Sections

Scale  
1:200 @ A1

Drawing Created  
06.11.19

Drawing Status  
For Planning

Revision  
-

Drawing No.  
832-CPA-ZZ-ZZ-DR-A-2205

Manchester Office  
Unit 3/5 Duxie House  
Duxie Street  
Manchester M12 1JW  
Tel 0161 944 7444  
cartwrightpickard.com  
© Cartwright Pickard Architects Ltd.