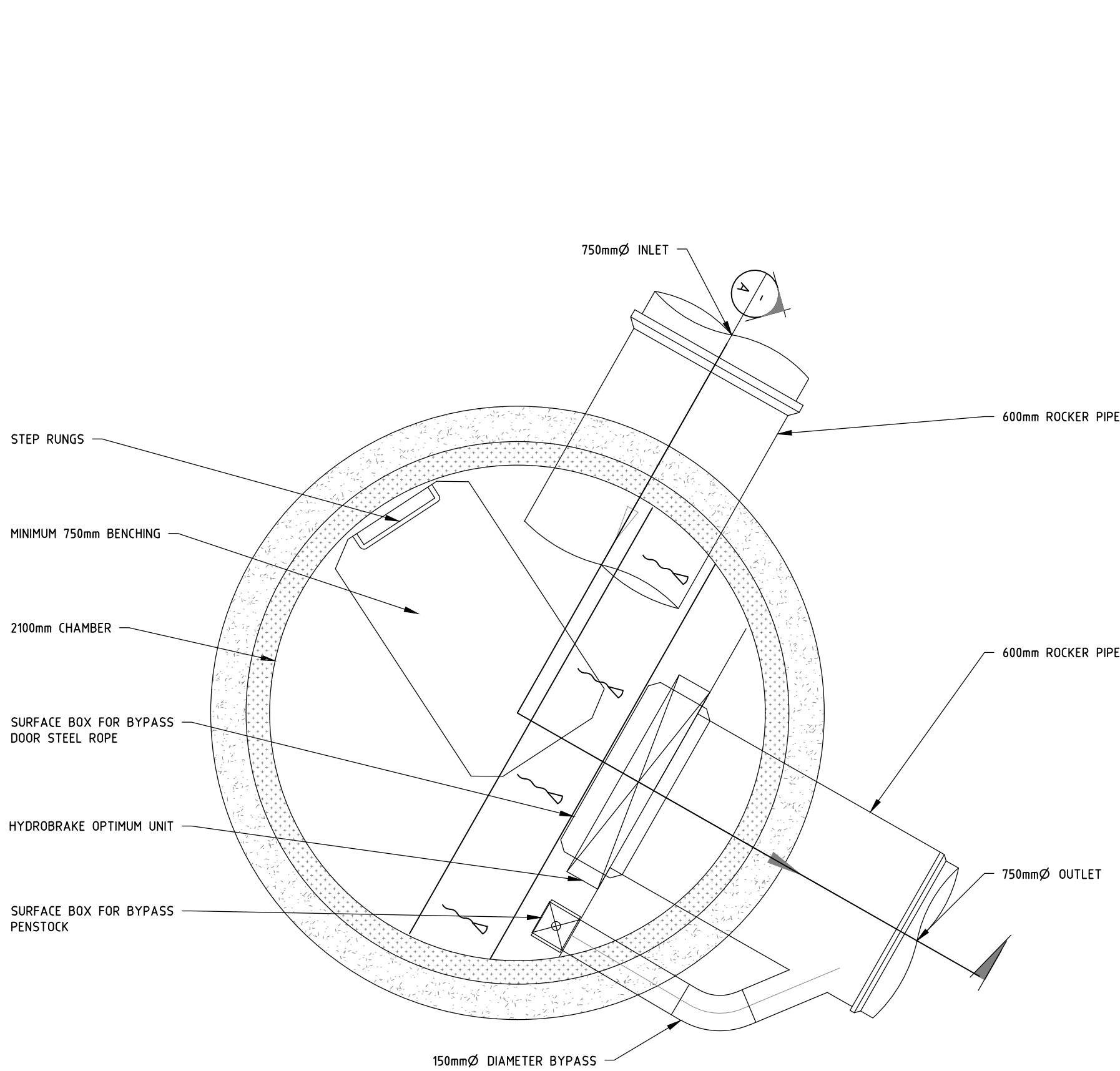


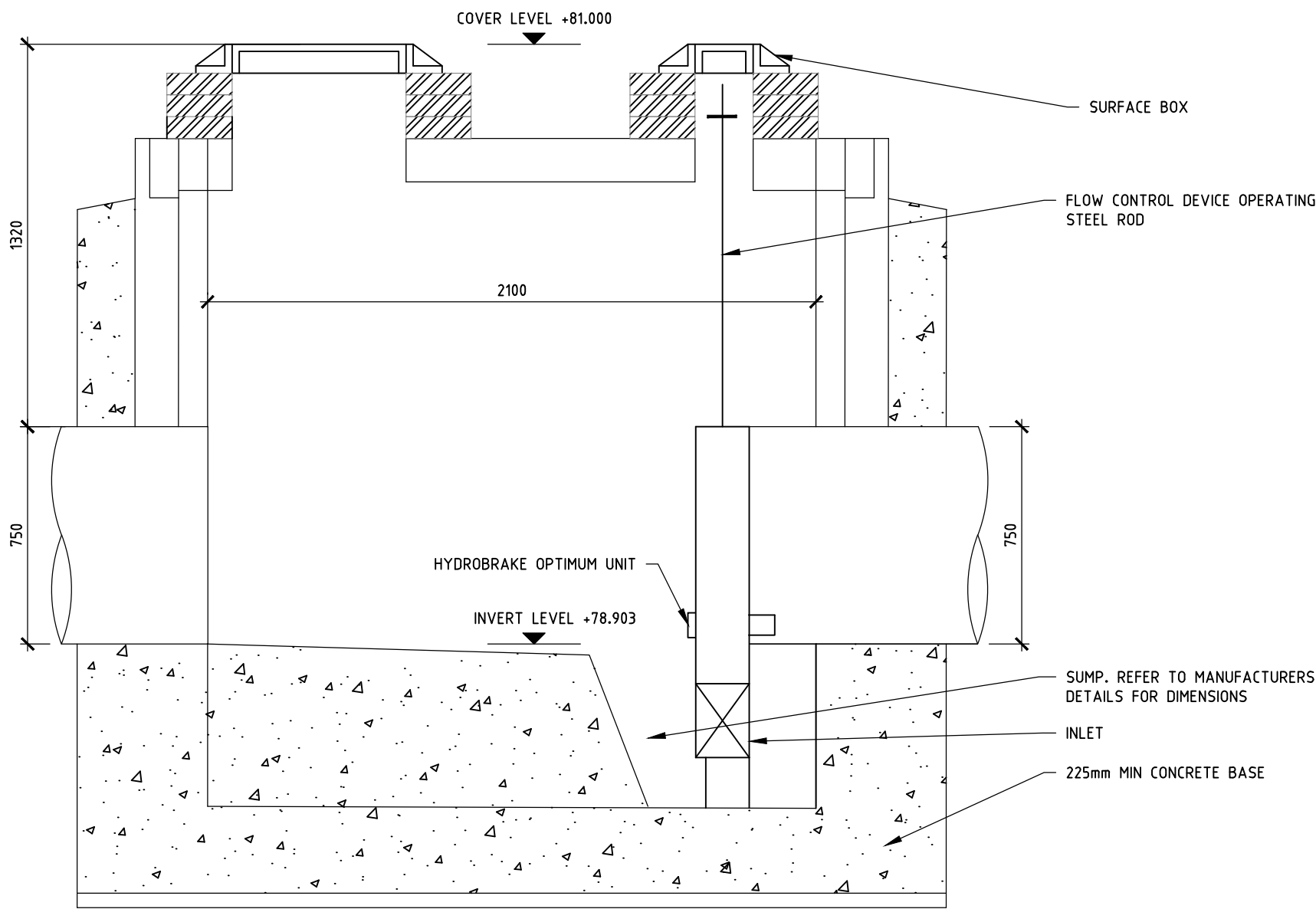
FILENAME

PLOT DATE

0 mm 10 20 30 40 50



MANHOLE S11 HYDROBRAKE
COVER LEVEL: 81.000
INVERT LEVEL: 750mm 78.903
DEPTH TO SOFFIT: 1.320
MAHOLE TYPE: UU TYPE 5
COVER TYPE: DOUBLE 1200 X 675 CLEAR OPENING
HYDROBRAKE SPECIFICATION: MD-SHE-0143-1170-1900-1170
ORIFICE SIZE: 14.3mm
DESIGN HEAD: 1.90m
DESIGN FLOW: 11.7L/S



MANHOLE S11 HYDROBRAKE
SECTION A

- NOTES:
1. ALL SEWERS ARE DESIGNED IN ACCORDANCE WITH SEWERS FOR ADOPTION 6TH EDITION AND UNITED UTILITIES GUIDELINES AND STANDARD DETAILS.
 2. ALL CO-ORDINATES AND LEVELS SHOWN ARE RELATIVE TO THE TOPOGRAPHIC SURVEY.
 3. IT IS THE RESPONSIBILITY OF THE CONTRACTOR TO ENSURE THE LINE AND LOCATION OF ANY EXISTING SEWERS, AS WELL AS ANY EXISTING GROUND AND INVERT LEVELS SHOWN ON THE DRAWING ARE CORRECT PRIOR TO THE COMMENCEMENT OF ANY WORKS. ANY DISCREPANCIES MUST BE MUST BE REPORTED IMMEDIATELY.
 4. PRIOR TO THE COMMENCEMENT OF ANY ON SITE WORKS THE CONTRACTOR MUST CONTACT THE STATUTORY UNDERTAKER AND BE IN POSSESSION OF THE LATEST DRAWINGS SHOWING THEIR APPARATUS.
 5. IT IS THE RESPONSIBILITY OF THE CONTRACTOR TO ALLOW FOR THE SUPERVISION OF THE CONSTRUCTION WORKS BY UNITED UTILITIES AND/ OR THE HIGHWAYS AUTHORITY. THE CONTRACTOR WILL NOTIFY THE SUPERVISING OFFICER GIVING NOTICE WHICH WILL BE IN ACCORDANCE WITH THE AUTHORITIES REQUIREMENTS.
 6. THE PROPOSED SEWERS WILL BE CLAY PIPE WORK AND SHALL BE EXTRA STRENGTH TO BS EN 295:1991 PART 1.
 7. ANY PCC PIPE WORK WILL BE IN ACCORDANCE WITH BS EN 1916:2002.
 8. ALL MANHOLES AND CHAMBERS SHALL BE IN ACCORDANCE WITH BS EN 1917:2002
 9. SEWERS WITH COVER TO SOFFIT GREATER THAN 1.2m IN ROADS AND 0.9m IN FIELDS SHALL HAVE BED AND SURROUND AS FOLLOWS: RIGID PIPE EMBEDMENT SHALL BE CLASS 5. SEMI RIGID PIPE EMBEDMENT SHALL BE CLASS 5 ALL IN ACCORDANCE WITH UNITED UTILITIES STANDARD DETAIL STD/05/001.
 10. PRIVATE DRAINAGE CONNECTIONS TO THE SEWER WILL BE 150MM DIAMETER AND LAID TO THE SPECIFIED INVERT.
 11. THE INVERT LEVELS SPECIFIED AT THE DRAG OUT CHAMBER ARE INCOMING LEVELS.
 12. WHEREVER POSSIBLE PRIVATE DRAINAGE RUNS WILL REMAIN WITHIN THE CURTILAGE OF THE DWELLING FOR WHICH THEY SERVE.
 13. THE CONNECTION TO THE ADAPTABLE SEWER SHALL BE MANUFACTURED JUNCTION PIPES A SADDLE CONNECTION IS NOT PERMITTED UNLESS IT IS CLEARLY SPECIFIED.
 14. ANY SEWER FOR ADOPTION WITH A COVER OF LESS THAN 1.2M TO PIPE SOFFIT IN ROADS OR 0.9M TO PIPE SOFFIT IN FIELDS WILL HAVE A MINIMUM 150mm GEN 3 CONCRETE BED AND SURROUND WITH FLEXIBILITY MAINTAINED WITH FLEXCELL EXPANSION JOINT FILLER OR SIMILAR APPROVED AT EACH PIPE JOINT.
 15. CONNECTIONS TO THE EXISTING SEWER WILL BE IN ACCORDANCE WITH SECTION 104 APPROVAL GRANTED BY UNITED UTILITIES.
 24. CONNECTIONS TO THE EXISTING WATERCOURSE WILL BE IN ACCORDANCE WITH APPROVAL GRANTED BY THE EA.

| | | | | | |
|--|------------|--|-------------|------------|---------|
| | | | | | |
| PO1 12.12.19 | | PRELIMINARY - Issued for Information | | | D.A R.A |
| Rev | Date | Description | By | CHK | |
| | | Manchester . UK 3rd Floor, Cornovan Court, 12 Blackfriars Street, Manchester, M3 9BQ, United Kingdom T: +44 (0) 161 834 1938 E: manchester@edgece.com | | | |
| The concepts + information contained in this document are the copyright of EDGE Consulting Engineers. Use or copying of this document in whole or in part without the written permission of EDGE Consulting Engineers constitutes an infringement of copyright. DO NOT SCALE DRAWINGS. IF IN DOUBT, ASK! | | | | | |
| Project Name HAWTHORNE FARM CLITHEROE | | | | | |
| Client PERSIMMON HOMES | | | | | |
| Designed | Drawn | Checked | Scale @/ A1 | | |
| D.A | D.A | R.A | 1:20 | | |
| Drawing Title HYDROBRAKE DETAILS S11 | | | | | |
| Project No. 19310 | | PRELIMINARY NOT FOR CONSTRUCTION | | | |
| Drawing No. 19310-EDGE-XX-XX-DR-C-C2209 | | Revision | | P01 | |