

[illegible]

extg window depth with eaklar frame surmounts of 1000 mm all round

extg height to eaves 4790

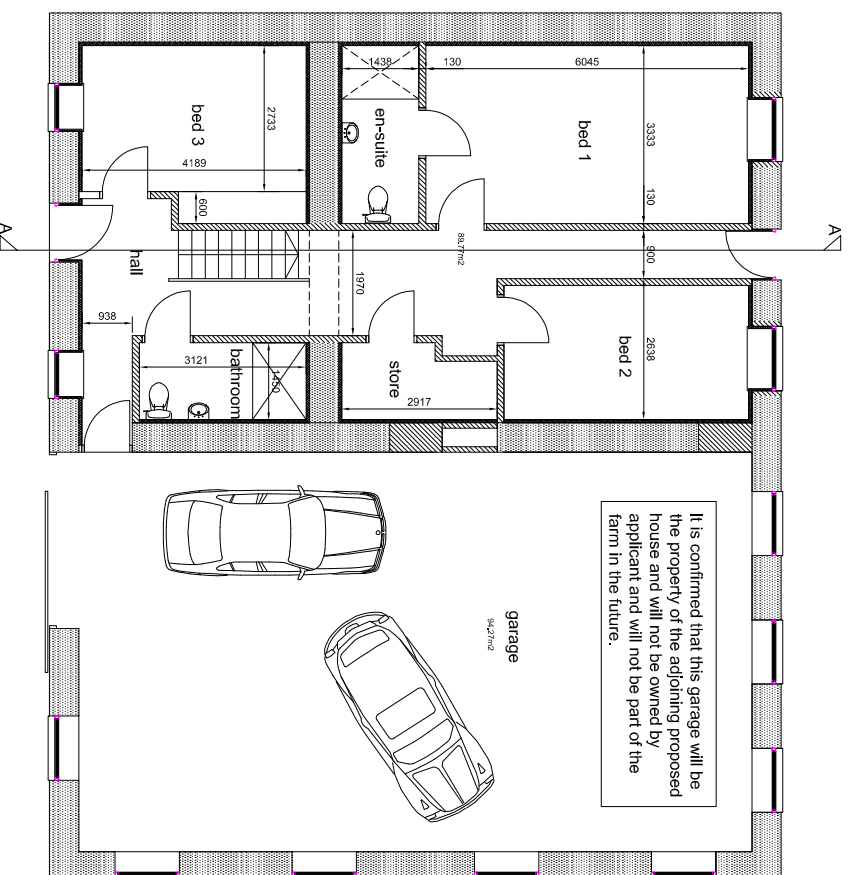
extg height to ridge 4200

Do not scale from this drawing.

All dimensions are to be checked on the drawings and on the equipment and on any components and on the equipment.

Any discrepancies are to be reported

All materials and workmanship to be in full accordance with the specifications and codes of practice.



The floor plan shows a rectangular house with a central hallway. On the left side of the hallway is a staircase. To the right of the hallway are three rooms: a dining area with a table and four chairs, a kitchen with a sink and a stove, and a living area with a fireplace and a large window. The plan is labeled with 'Line of truss' and 'SS. line'.

Proposed Finishes
Walls - ex-gy random stone with ashlar stone surrounds to windows and doors
Roofs - Ex-gy natural blue/grey slates with white PVCu fascias and black PVCu rainwater goods.
Windows & Doors - double glazed stained timber windows.

