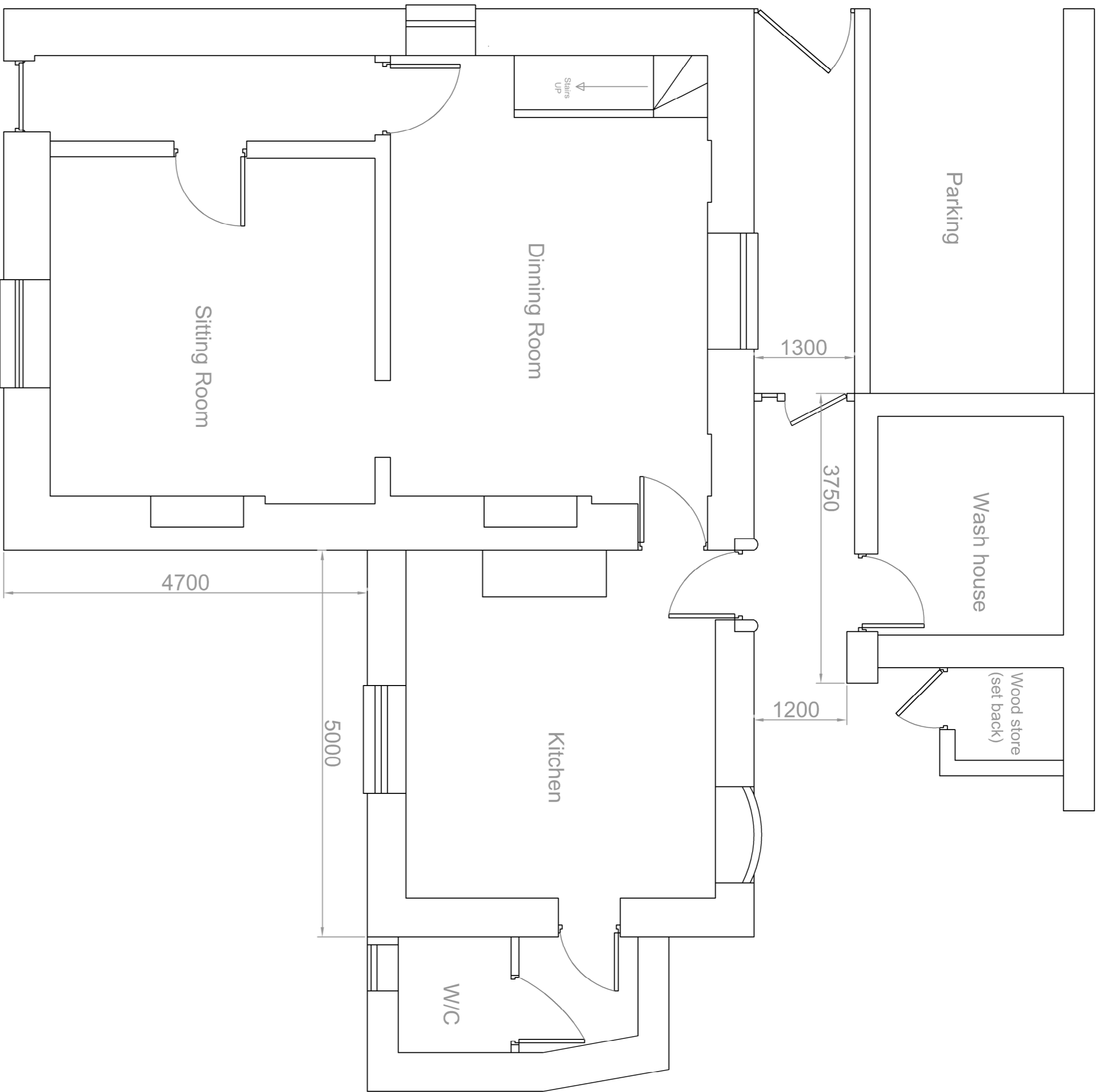
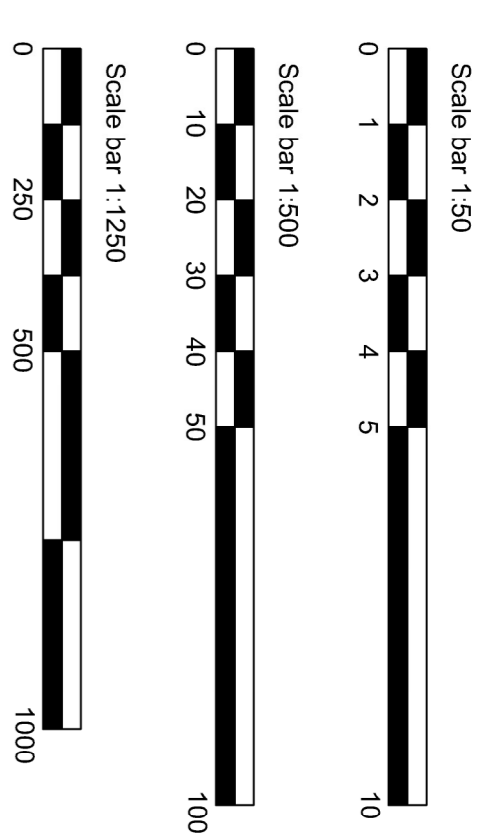


All measurements approximate and to be verified on-site. To be read in conjunction with D&A statement and further documentation.

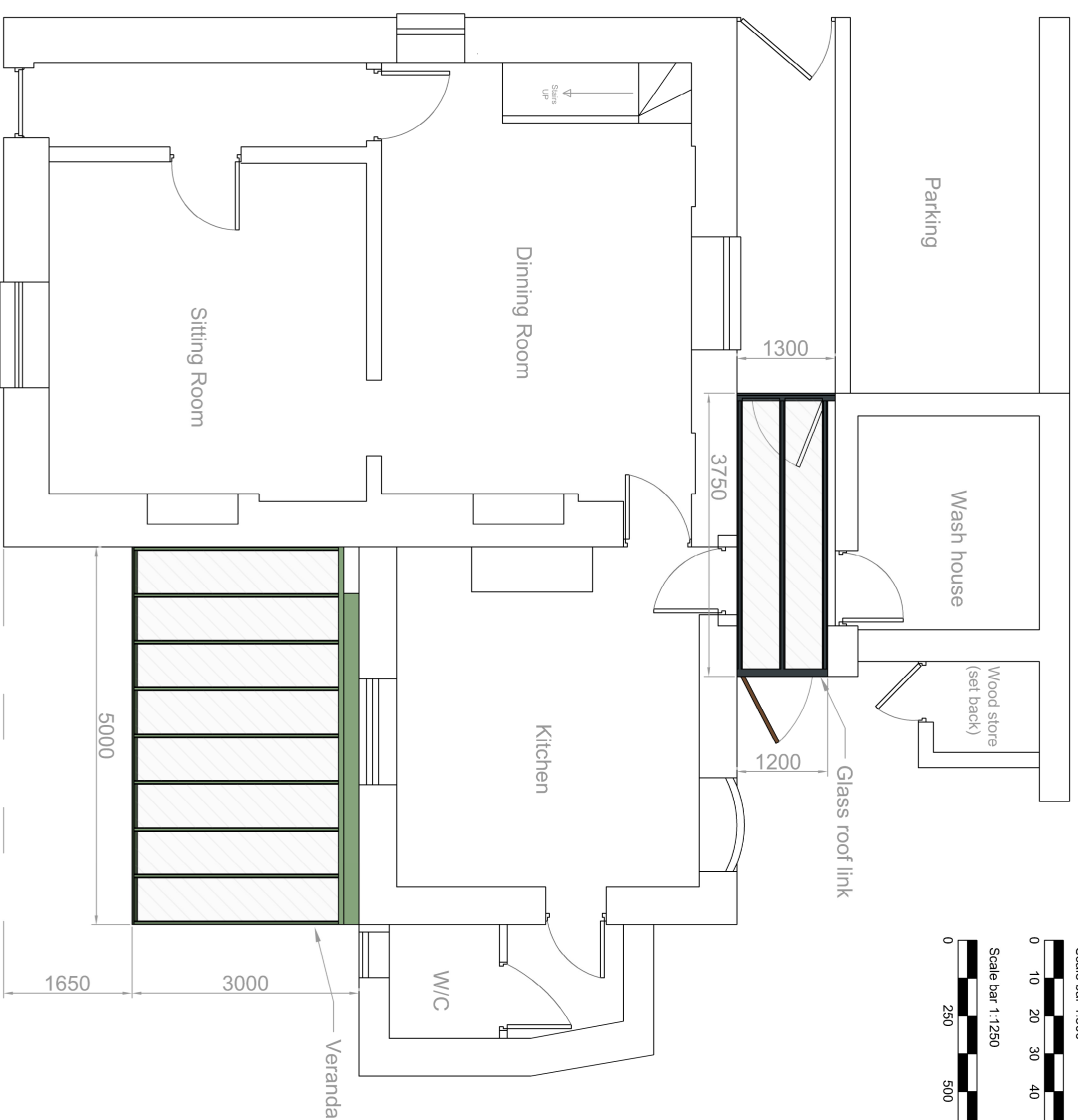
Veranda constructed from extruded aluminium framework, powder coated. Cast-in-place concrete wall plate fixed via anchor bolts to masonry line (see fixing example below), from support struts fixed to patio retaining wall (concrete), from thick clear toughened glass roof panels, integral drainage.

Glass roof link constructed from extruded aluminium framework, powder coated. Anthracite (slate) grey, fixed direct, 6mm thick clear toughened glass roof panels.

Drawing copyright of R.Pullen - Not to be reproduced.

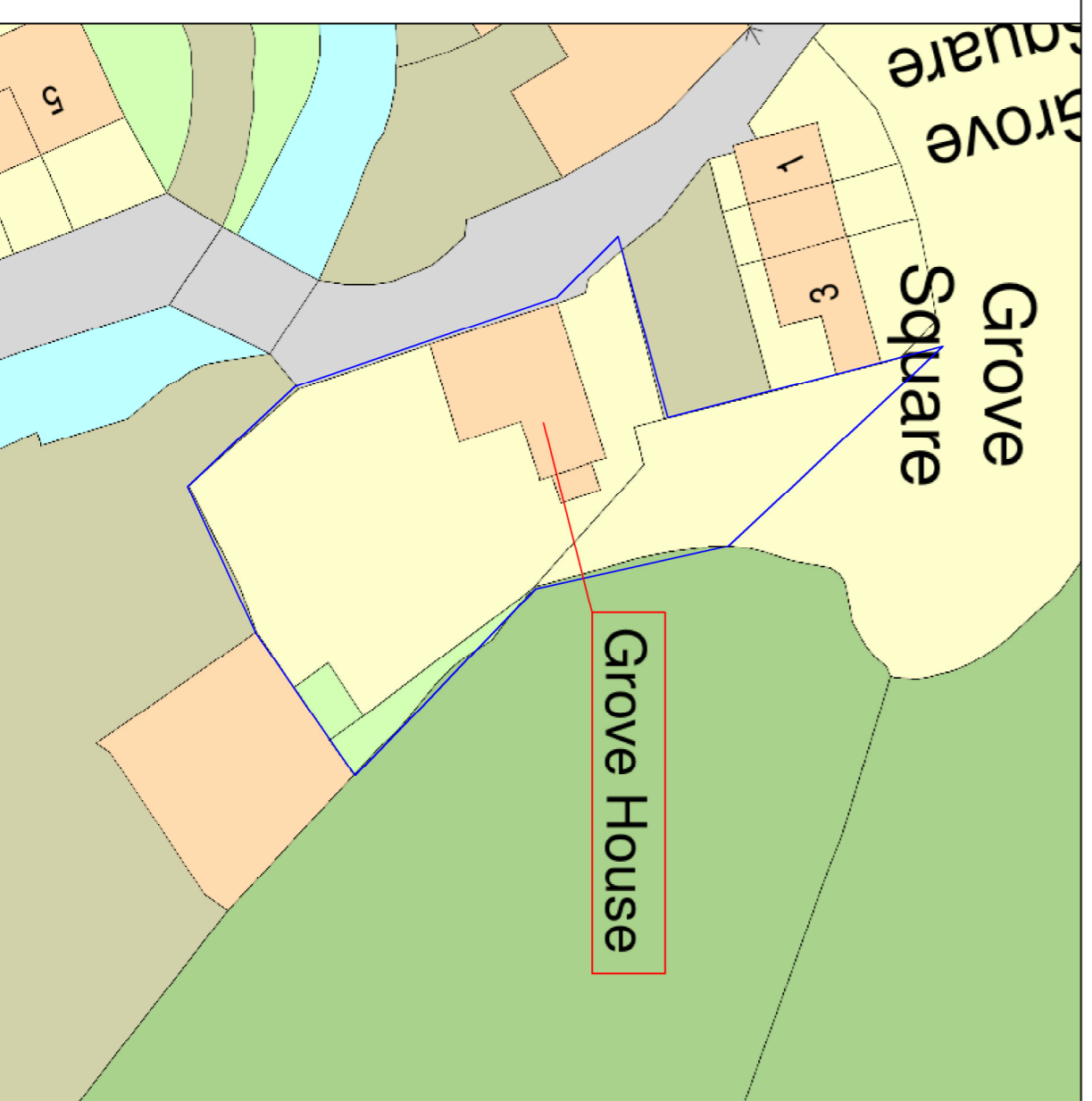


Existing Site Layout

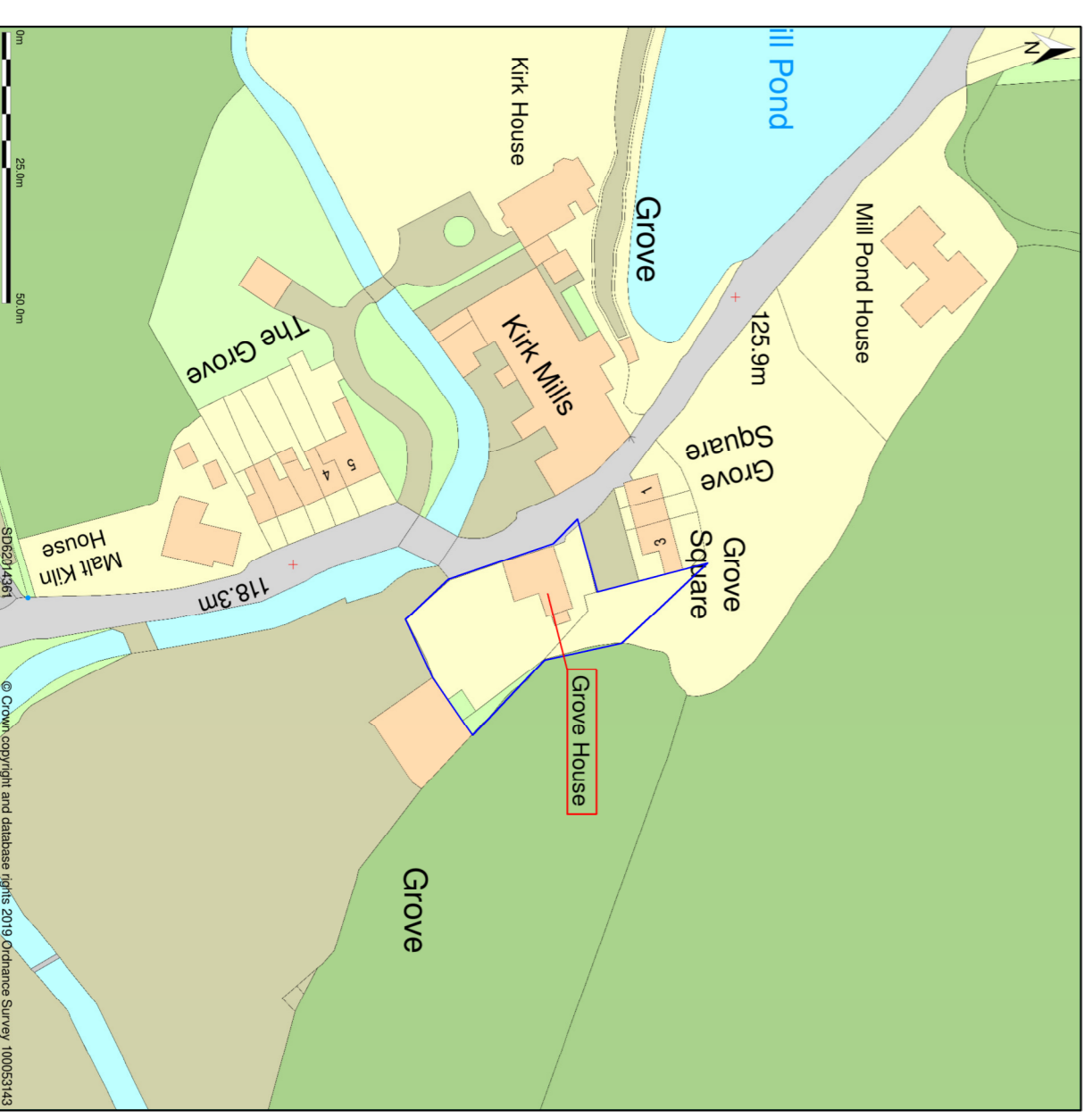


Proposed Site Layout

Scale: 1:500 @A1



Scale: 1:1250 @A1



Wall anchor resin fixing system

Anchor Installation	Removal & Restoration

The non-expansion wall anchor resin system has been designed to reduce strain on surrounding materials and allow strong fixings to be made in friable materials.

Benefits of the wall anchor system in this situation:

- Fixing can be made into the mortar line
- No drilling into late Victorian stone work
- Non-expansion fixing will not cause pressure damage to surrounding soft sandstone
- Wall anchor can be removed, mortar line re-pointed and wall returned to original condition with NO SCARFING