

- Key to Symbols
- Distribution of Local Biodiversity Action Plan species**
- Creeping willow *Salix repens*
 - Golden dock *Rumex maritimus*
 - Shoreweed *Littorella uniflora*
 - Small water-pepper *Persicaria minor*
 - Water-purslane *Lythrum portula*
 - - Occasional presence of Shoreweed *Littorella uniflora*
- Distribution of Thread rush *Juncus filiformis***
- Distribution of New Zealand pigmyweed *Crassula helmsii***
- Dominant
 - ▨ Occasional
- NVC habitats**
- M22b *Juncus subnodulosus*-*Cirsium palustre* fen-meadow, *Briza media*-*Trifolium* spp. sub-community
 - M23b *Juncus effusus/acutiflorus*-*Galium palustre* rush-pasture, *Juncus effusus* sub-community
 - U4d *Festuca ovina*-*Agrostis capillaris*-*Galium saxatile* grassland, *Luzula multiflora*-*Rhytidadelphus loreus* sub-community
 - U4e *Festuca ovina*-*Agrostis capillaris*-*Galium saxatile* grassland, *Vaccinium myrtillus*-*Deschampsia flexuosa* sub-community
 - U5a *Nardus stricta*-*Galium saxatile* grassland, species-poor sub-community
 - W1 *Salix cinerea*-*Galium palustre* woodland

Rev	Date	Drawn	Description	Ch'k'd	App'd
01	04/07/2019	KW	For Information	SJ	PAR

M
MOTT
MACDONALD

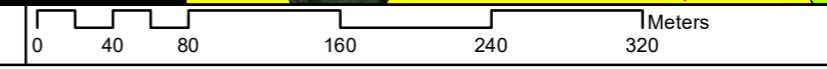
M
T +44 (0)113 3946700
W mottmac.com

Client

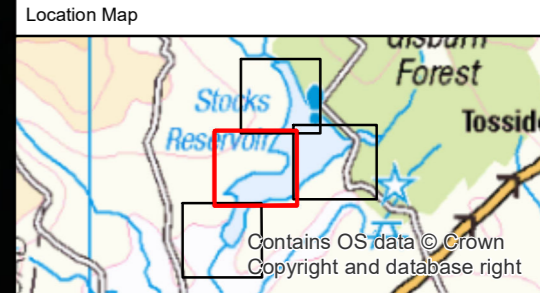
Title
Hodder: Location of Local Biodiversity Action Plan, Invasive Species Plant and NVC Community Map
Sheet 1 of 4

Designed	KW	Check	SJ
Drawn	KW	Coordination	MJ
GIS Check	SC	Approved	PAR
Scale at A3	Status	Rev	Security
1:4,000	INF	01	STD

Drawing Number
368589-MMD-JS13-NVC-001-A



Source: Esri, DigitalGlobe, GeoEye, Earthstar Geographics, CNES/Airbus DS, USDA, USGS, AeroGRID, IGN, and the GIS User Community



Key to Symbols

Distribution of Local Biodiversity Action Plan species

- Marsh speedwell *Veronica scutellata*
- Shoreweed *Littorella uniflora*
- Trifid bur-marigold *Bidens tripartita*
- Water-purslane *Lythrum portula*

Distribution of New Zealand pigmyweed *Crassula helmsii*

- Dominant
- Occasional

NVC habitats

- M27 *Filipendula ulmaria*-*Angelica sylvestris* mire

Rev	Date	Drawn	Description	Ch'k'd	App'd
01	04/07/2019	KW	For Information	SJ	PAR

M M
MOTT MACDONALD

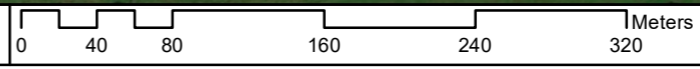
T +44 (0)113 3946700
 W mottmac.com

Client

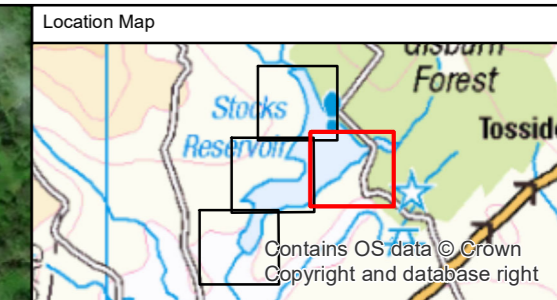
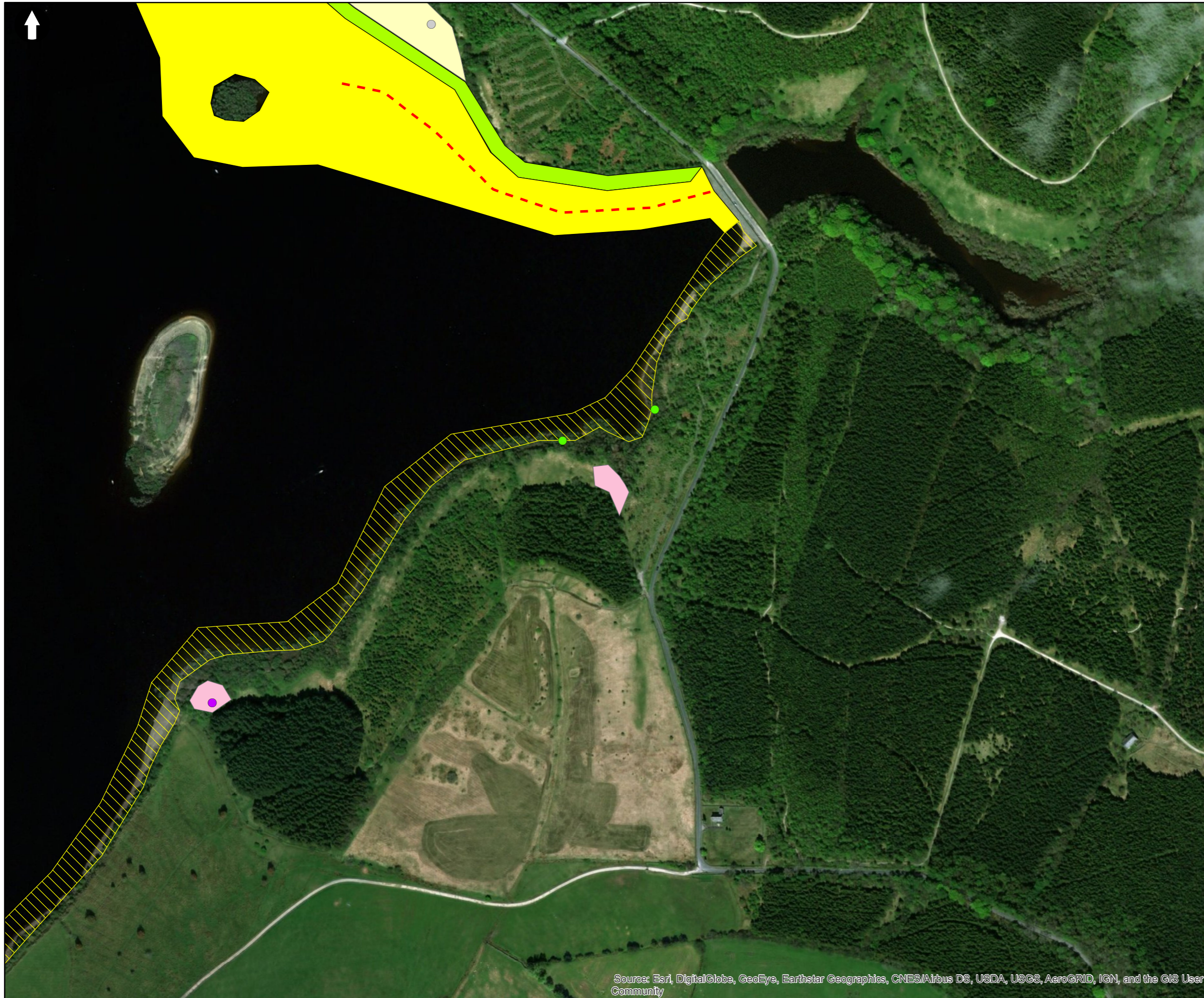
Title
 Hodder: Location of Local Biodiversity Action Plan, Invasive Species Plant and NVC Community Map
 Sheet 2 of 4

Designed	KW	Check	SJ
Drawn	KW	Coordination	MJ
GIS Check	SC	Approved	PAR
Scale at A3	Status	Rev	Security
1:4,000	INF	01	STD

Drawing Number
 368589-MMD-JS13-NVC-001-A



Source: Esri, DigitalGlobe, GeoEye, Earthstar Geographics, CNES/Airbus DS, USDA, USGS, AeroGRID, IGN, and the GIS User Community



Key to Symbols

Distribution of Local Biodiversity Action Plan species

- Globeflower *Trollius europaeus*
- Small water-pepper *Persicaria minor*
- Thread rush *Juncus filiformis*
- - Occasional presence of Shoreweed *Littorella uniflora*
- Distribution of Thread rush *Juncus filiformis*

Distribution of New Zealand pigmyweed *Crassula helmsii*

- Dominant
- ▨ Occasional

NVC habitats

- M27a *Filipendula ulmaria*-*Angelica sylvestris* mire, *Valeriana officinalis*-*Rumex acetosa* sub-community
- W1 *Salix cinerea*-*Galium palustre* woodland

Rev	Date	Drawn	Description	Ch'k'd	App'd
01	04/07/2019	KW	For Information	SJ	PAR

M
MOTT
MACDONALD

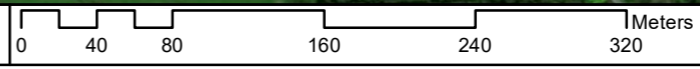
M
T +44 (0)113 3946700
W mottmac.com

Client

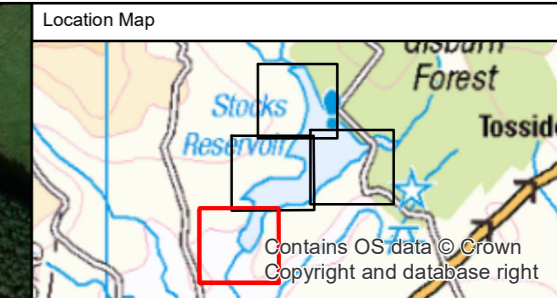
Title
Hodder: Location of Local Biodiversity Action Plan, Invasive Species Plant and NVC Community Map
Sheet 3 of 4

Designed	KW	Check	SJ
Drawn	KW	Coordination	MJ
GIS Check	SC	Approved	PAR
Scale at A3	Status	Rev	Security
1:4,000	INF	01	STD

Drawing Number
368589-MMD-JS13-NVC-001-A



Source: Esri, DigitalGlobe, GeoEye, Earthstar Geographics, CNES/Airbus DS, USDA, USGS, AeroGRID, IGN, and the GIS User Community



Key to Symbols

Distribution of New Zealand pigmyweed *Crassula helmsii*

Occasional

Rev	Date	Drawn	Description	Ch'k'd	App'd
01	04/07/2019	KW	For Information	SJ	PAR

M
MOTT
MACDONALD

M
T +44 (0)113 3946700
W mottmac.com

Client

Title
Hodder: Location of Local Biodiversity Action Plan, Invasive Species Plant and NVC Community Map
Sheet 4 of 4

Designed	KW	Check	SJ
Drawn	KW	Coordination	MJ
GIS Check	SC	Approved	PAR
Scale at A3	Status	Rev	Security
1:4,000	INF	01	STD

Drawing Number
368589-MMD-JS13-NVC-001-A

Source: Esri, DigitalGlobe, GeoEye, Earthstar Geographics, CNES/Airbus DS, USDA, USGS, AeroGRID, IGN, and the GIS User Community

© Mott MacDonald Ltd.
This document is issued for the party which commissioned it and for specific purposes connected with the captioned project only. It should not be relied upon by any other party or used for any other purpose.
We accept no responsibility for the consequences of this document being relied upon by any other party, or being used for any other purpose, or containing any error or omission which is due to an error or omission in data supplied to us by other parties.

