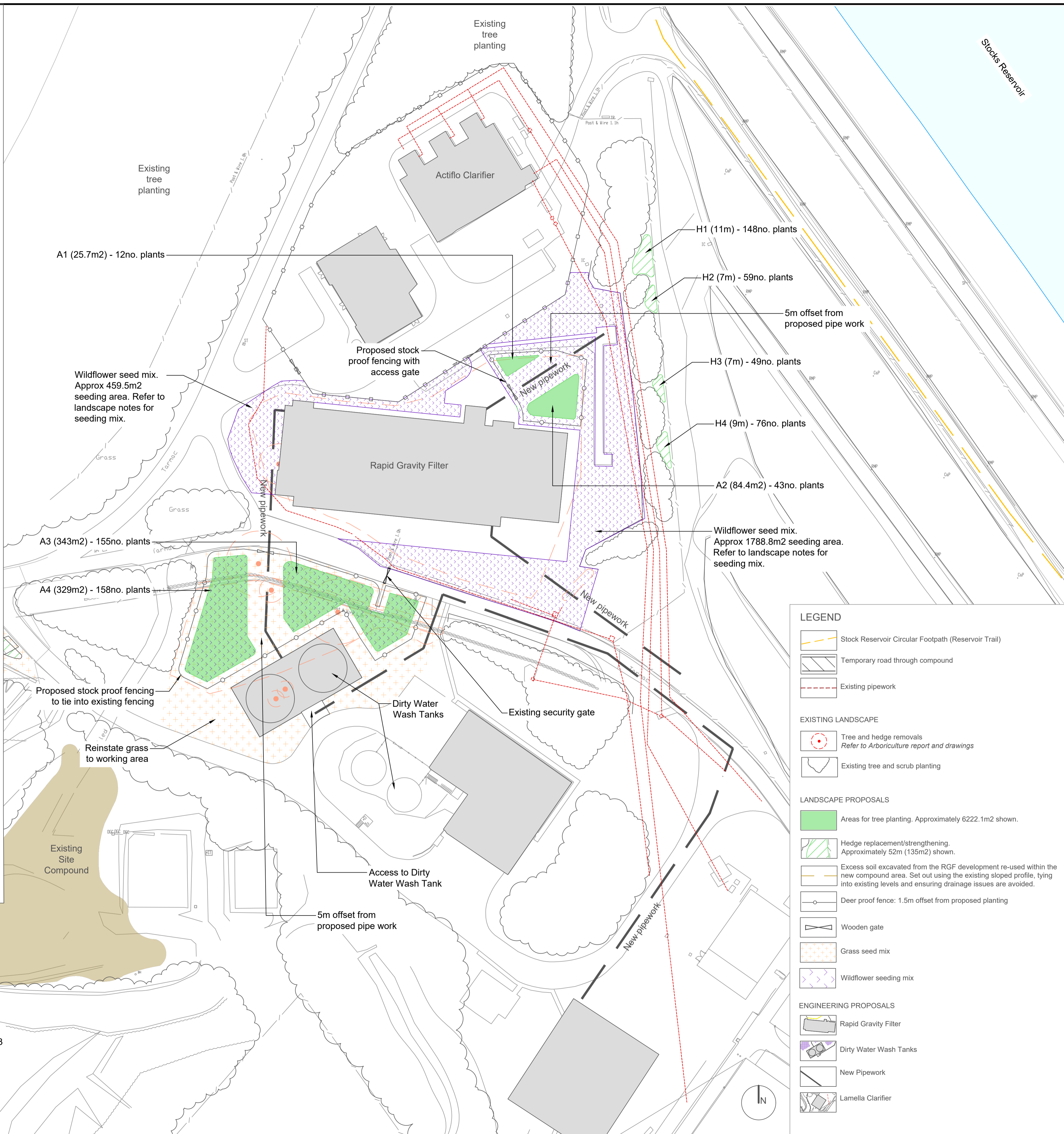
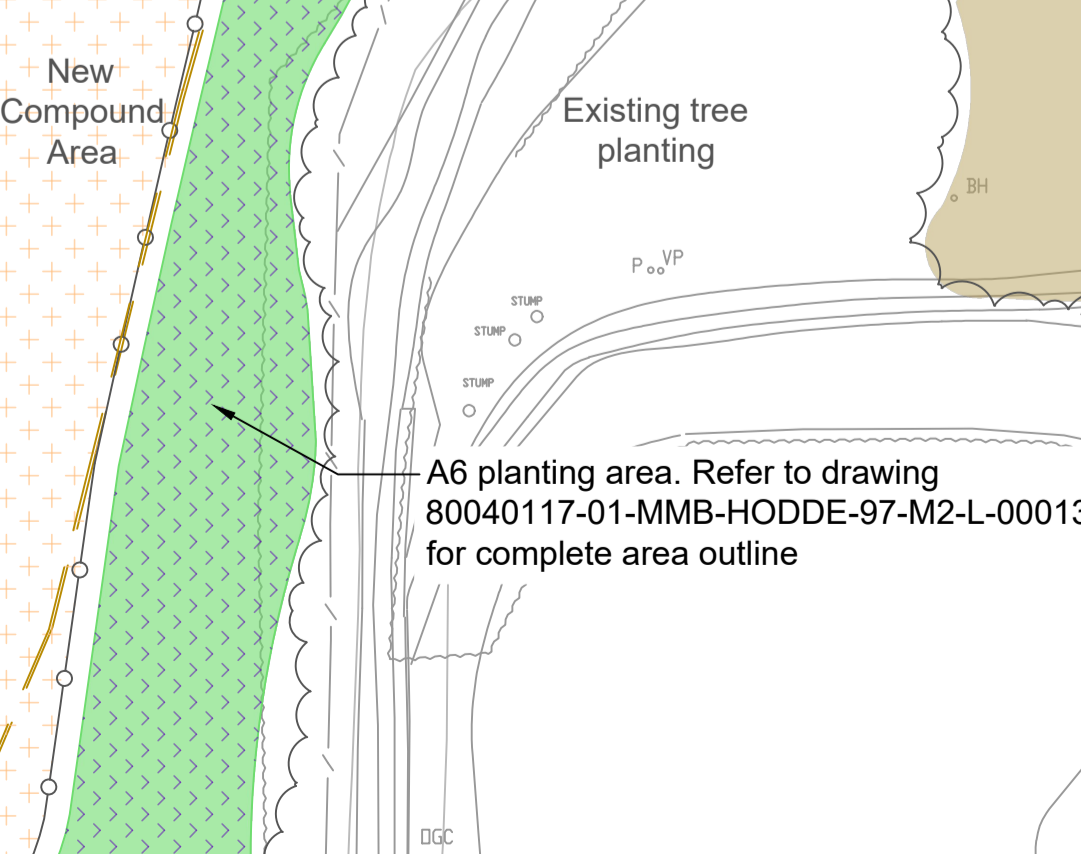


LANDSCAPE NOTES

- General**
 - All planting to comply with BS3936 for Nursery Stock
 - All pre-planting, site preparation, planting and post-planting maintenance shall be carried out in accordance with BS4428 Code of Practice for General Landscape Operations
 - All trees shall be positioned in accordance with BS5837 Trees in Relation to Design, Demolition and Construction
 - All trees shall be selected and planted in accordance with BS8545 Trees from Nursery to Independence
- Schedule of Implementation**
 - The landscape reinstatement will be carried out in the first available season after completion of the construction, when weather conditions are suitable.
 - Soil distribution and seeding to be carried out between April and October
 - Tree planting October to March
 - Shrub planting October to March
- Ground preparation**
 - All litter debris and stone above 50mm in any dimension and any other unwanted material will be removed from planting and seeding areas.
 - All soils stripped and stockpiled during construction to be replaced prior to final reinstatement as per BS3882 Specification for Topsoil and BS8601 Specification for Subsoil.
- Proposed grass seeding**
 - All operations shall be carried out in accordance with good horticultural practice, avoiding periods of inclement weather or when soil conditions are unsuited to preparatory and/or seeding operations. Seeding will be carried out in the first available window of opportunity during the stated sowing period of 1 March to 31 May or 1 September to 31 October.
 - Break up compacted topsoil to 150mm depth and reduce top 75mm to a tilth suitable for grading.
 - Remove unwanted material and stones over 50mm in any dimension, including thatch and roots and dispose of off site to licensed tip.
 - Reduce top 25mm of topsoil to a fine tilth suitable for seeding and grade to smooth flowing countours.
 - Supply and apply 10:15:10 N:P:K at 50g/m² or 500kg/Ha.
 - Grassed areas to be seeded with RE2 (Lowland Meadow) supplied by Germinal, or equal and approved, between dates stated in section 4.1.
 - All new woodland planting areas to be underplanted with A17 (Legume and Clover mix) supplied by Germinal, or equal and approved, between dates stated in section 4.1.
- Proposed wildflower seeding**
 - Prepare seed bed by first removing weeds using repeated cultivation.
 - Wildflower area to be seeded with EM1 Basic General Purpose Meadow Mixture supplied by Emorsgate Seeds, or equal and approved, between March and May and September and October.
- Hedgerow planting**
 - Native hedgerow planting is to be planted as a double staggered hedgerow with plants 450mm apart in line and 450mm between two rows. The first row of hedgerow plants closest to any boundary should be positioned 500mm from the fence line
 - Native hedge plants are to be fitted with clear spiral shrub guard and secured with a supporting stake
 - Woodchip mulch is to be certified under the Forestry Stewardship Council (FSC). Chipped conifer bark, size range 25-75mm, maximum 15% fines, composted for a minimum of six weeks prior to delivery. To be applied to hedge planting to a depth of 75mm, and a width of 800mm centred on the centre line of the hedge.
- Woodland planting**
 - A weed-free circle, with a radius of 750mm, is to be maintained around the base of each tree for the maintenance period mentioned in section 9.1.
 - Trees are to be fitted with clear spiral shrub guard and secured with a supporting stake
 - Mulch matting supplied by Green-tech, or equal and approved, to be used at the base of each tree.
 - All whips and transplants (Feathered) should be planted in groups of 3 to 5 with larger species located towards the centre of planting areas.
- Watering**
 - Immediately after planting, all newly planted stock is to be watered in to full ground capacity.
- Maintenance**
 - Maintenance period of 12 months.
 - Grass initially to be cut to a height of 50mm in June/July and arisings removed from site. Future cutting to fall in line with existing cutting regime of site. Legume and clover mix should suppress weed growth. Planted areas to be kept clear of vigorous weeds by cutting to ground level. If legume and clover mix and strimming operations are not sufficient to control weed growth, additional treatment around base of plant (600mm diameter area) with hand weeding (treatment works).
 - UU operational grassland to be maintained short. A4 Mow strip to be provided adjacent to edge of UU assets and new woodland planting.
 - Mulch to base of trees and within planting areas to be topped up to minimum 75mm depth on an annual basis during initial establishment.
 - Weeds within all hedgerow and tree planting areas should be managed through annual mulching and hand weeding as required to ensure planted trees are able to thrive.
 - The Contractor shall ensure all planting is wind firm and any damaged growth shall be pruned back to healthy wood.
 - Stakes and tubes should be inspected twice a year in October and March and adjusted to allow for the growth of each plant. Any displaced or damaged items should be rectified or replaced to ensure successful growth of plant stock.
 - Tubes and stakes should be removed at the end of the Maintenance Period.
 - The Contractor shall ensure all planting areas and grass are free from all kinds of litter.
 - Watering is the sole responsibility of the Contractor throughout the works.
 - Water is to be applied at a rate and frequency to ensure the successful establishment and ongoing good health of all new plant stock.
 - All plants which are missing, are damaged, have died, or, in the opinion of the Contract Administrator, are failing to make satisfactory extension growth, shall be replaced in the next planting season following the loss as directed by the Landscape Architect/Contract Administrator.
 - All replacement planting shall be of the same age as the stock when first planted.
 - The Contractor shall be required to visit the site with the Landscape Architect at the end of each growing season, to schedule and agree all failures.

NOTE:
REFER TO DRAWING 80040117-01-MMB-HODDE-97-M2-L-00013 FOR PLANTING SCHEDULE AND AREA BREAKDOWN



LEGEND

- Stock Reservoir Circular Footpath (Reservoir Trail)
- Temporary road through compound
- Existing pipework

EXISTING LANDSCAPE

- Tree and hedge removals Refer to Arboriculture report and drawings
- Existing tree and scrub planting

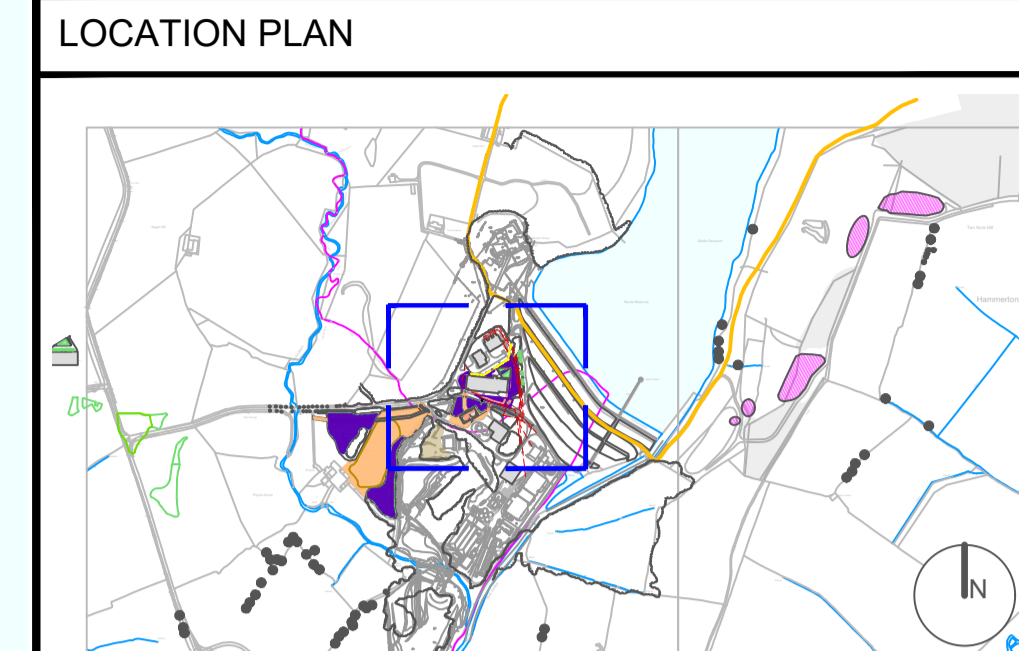
LANDSCAPE PROPOSALS

- Areas for tree planting. Approximately 6222.1m² shown.
- Hedge replacement/strengthening. Approximately 52m (135m²) shown.
- Excess soil excavated from the RGF development re-used within the new compound area. Set out using the existing sloped profile, tying into existing levels and ensuring drainage issues are avoided.
- Deer proof fence: 1.5m offset from proposed planting
- Wooden gate
- Grass seed mix
- Wildflower seeding mix

ENGINEERING PROPOSALS

- Rapid Gravity Filter
- Dirty Water Wash Tanks
- New Pipework
- Lamella Clarifier

- NOTES**
- ALL DIMENSIONS IN MILLIMETRES AND ALL LEVELS IN METRES AOD UNLESS NOTED OTHERWISE.
 - NO DIMENSIONS ARE TO BE SCALED FROM THIS DRAWING.



Scale: NTS

Tree replacement planting shall be undertaken at the agreed ratio of 2:1. this equates to 16 new standard trees and an area of 8766m² of mixed species native tree planting.

New deer proof fencing will be provided as part of the new tree planting proposals. New compound area consists of unmanaged grazing land and will be reinstated with new seeding using an appropriate mix, upon completion of the works. Refer to these inset Plans along with the Arboricultural Drawings for information on the trees to be removed as part of the development.

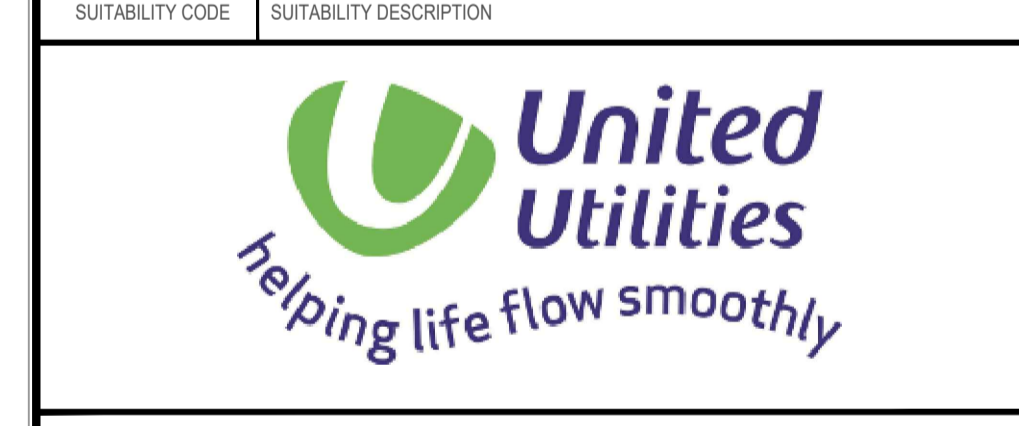
Tree removals - approximate quantities with reference to the Arboriculture Report:
4383m² of existing tree and shrub/hedge planting measured by area.
8 individual trees identified as standards within the Arboricultural Survey.

1:500 0 25m 50m

CURRENT ISSUE INFORMATION

VERSION	AUTH	CHKD	REVD	REASON FOR ISSUE	DATE
P01	AA	PW	NC	Issued for Planning Application	22/11/19
P02	AA	PW	NC	Revised for Planning Application	10/03/20
P03	AA	PW	NC	Updated for Planning Application	24/03/20
P04	AA	PW	NC	Revised Following Client Review	25/03/20

SUITABILITY CODE	SUITABILITY DESCRIPTION
S2	Issued for Information



HODDER WTW AMP6 RENOVATION

LANDSCAPE INSET PLAN 1 OF 2

SHEET 2 OF 4

SCALE	SHEET SIZE
1:500	A1
DRAWING NUMBER	REVISION
80040117-01-MMB-HODDE-97-DR-L-00012	P04