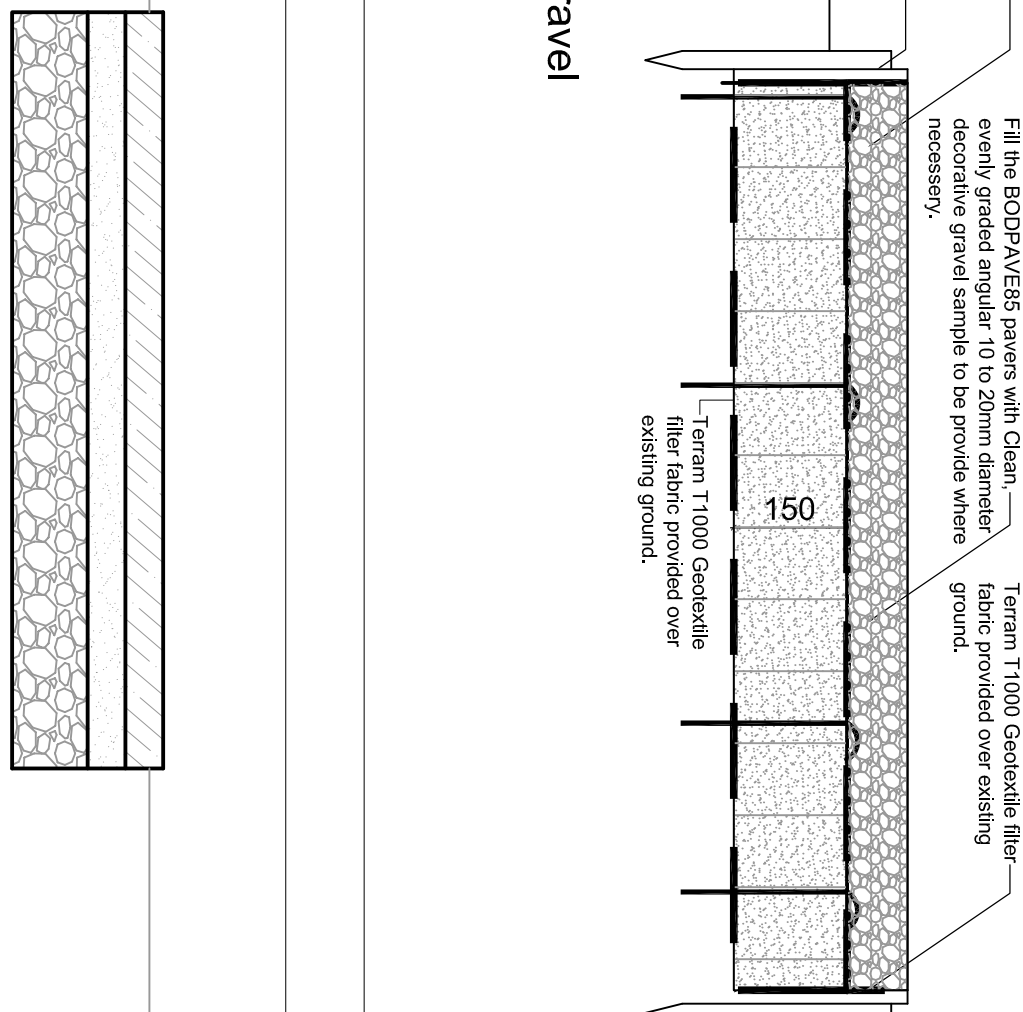
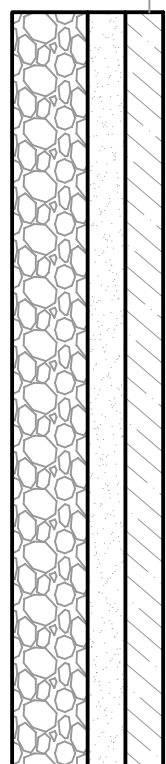


Detail of Tarmac for access road and parking  
Detail A



Decorative Gravel  
Detail B



### Detail C

Natural Indian Stone flags to be laid on 50mm 3:1 coarse sand/cement bed, over 150mm of compacted D1p1 crushed stone sub-base material to falls and levels. Excavate any soft spots in sub-grade as required and dispose. Cart all spoil to licensed, off-site tip.



Image of imprinted concrete with cobble effect