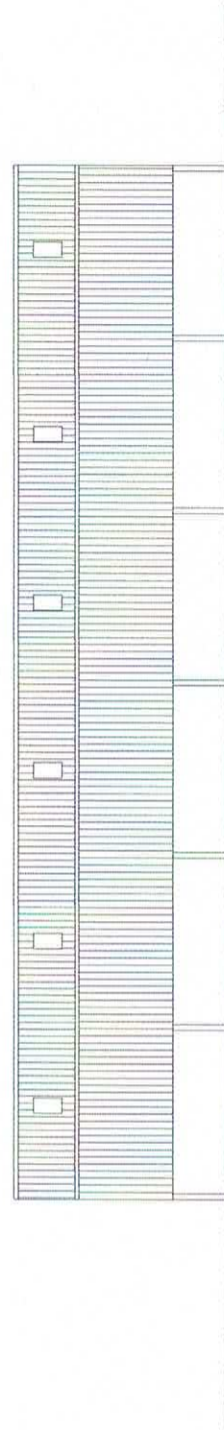
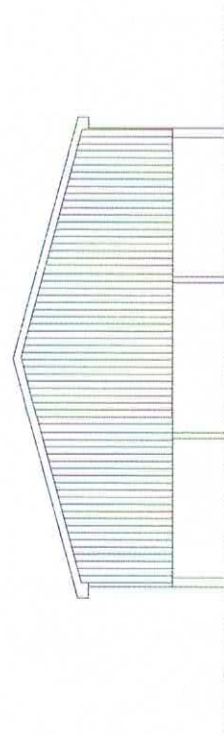


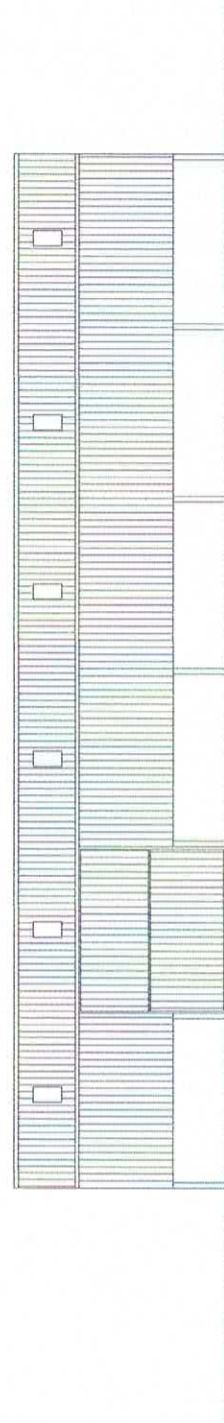
South Elevation



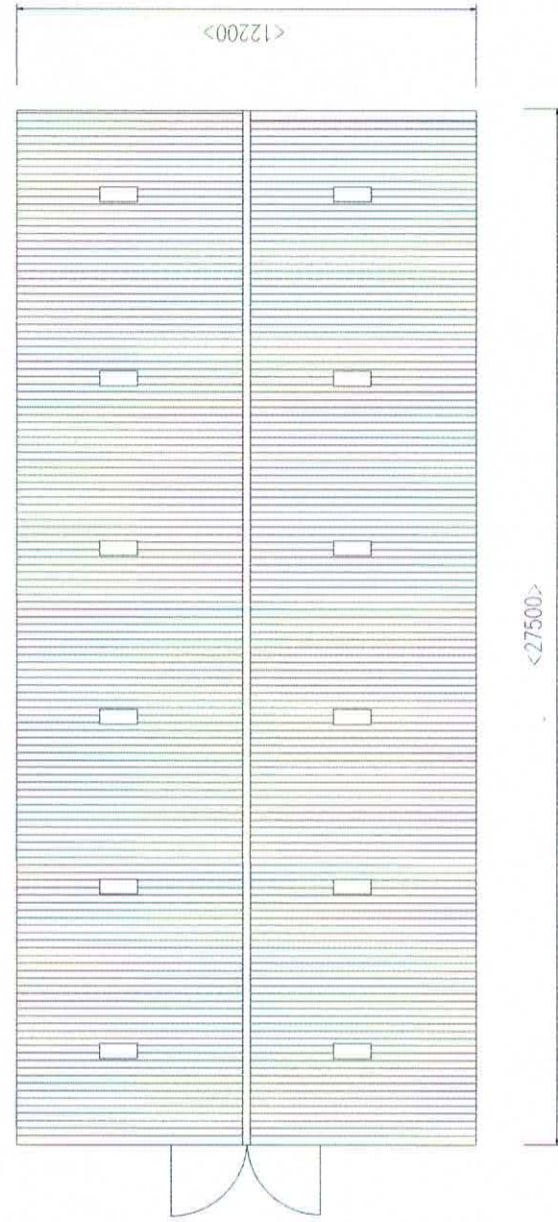
West Elevation



North Elevation



East Elevation



Materials:
 Walls- Precast concrete panels to 1300mm clad
 above with Yorkshire boarding
 Roof - Eternit Farmscape fibre cement
 Roof lights - GRP
 Doors - Timber clad

General Purpose Agricultural Building
 Elevation / Plan Drawings
 Scale 1:200 @ A3