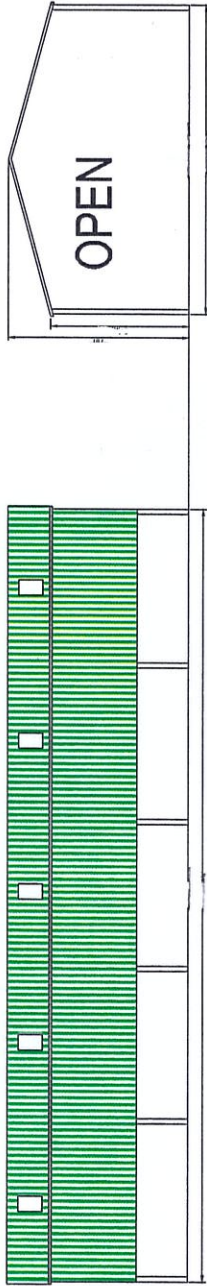




PROPOSED NORTH
FACING ELEVATION

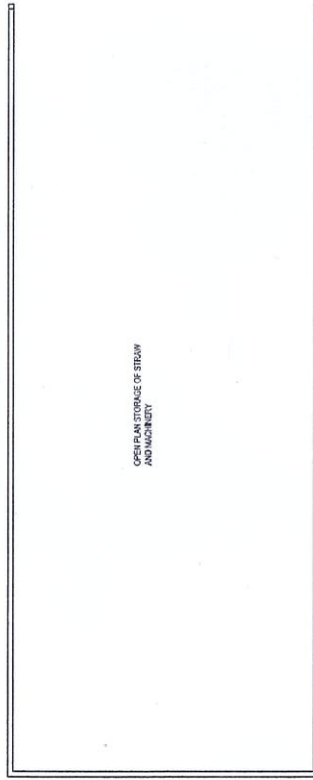
MATERIALS: ROOF AND UPPER WALLS IN
CONCRETE
LOWER WALLS CONCRETE PANELS



PROPOSED SOUTH
FACING ELEVATION

PROPOSED WEST FACING ELEVATION

PLAN VIEW



USE OF AN STORAGE OF STRAW
AND MANURE

30m - length
13.7m breadth

walls
lower-concrete walls
upper-box profile
Juniper Green
Roof - Fibre concrete
Grey

Forshaw
bolton fold farm
Aiston Lane
Aiston
PL3 3BN