

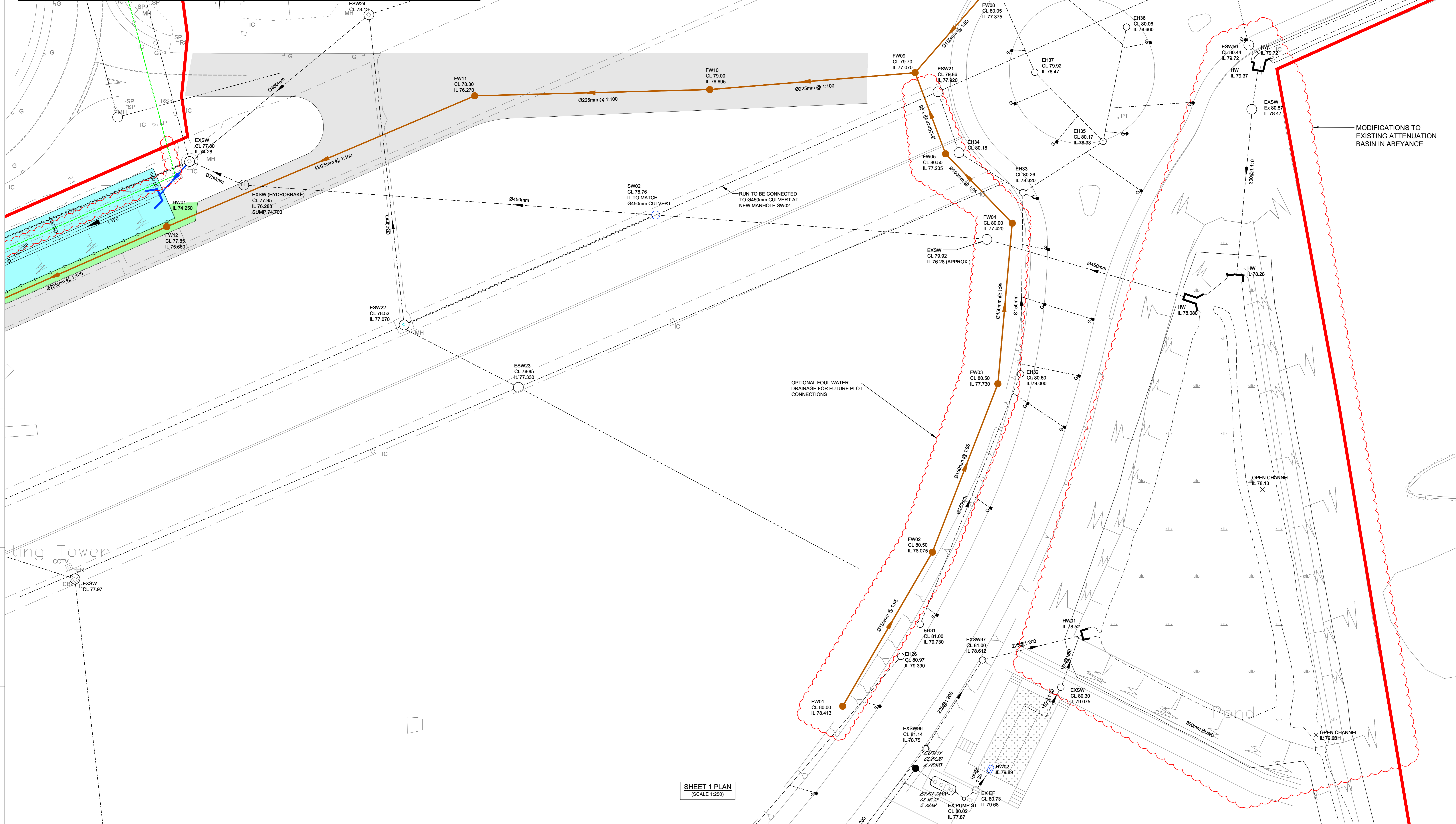
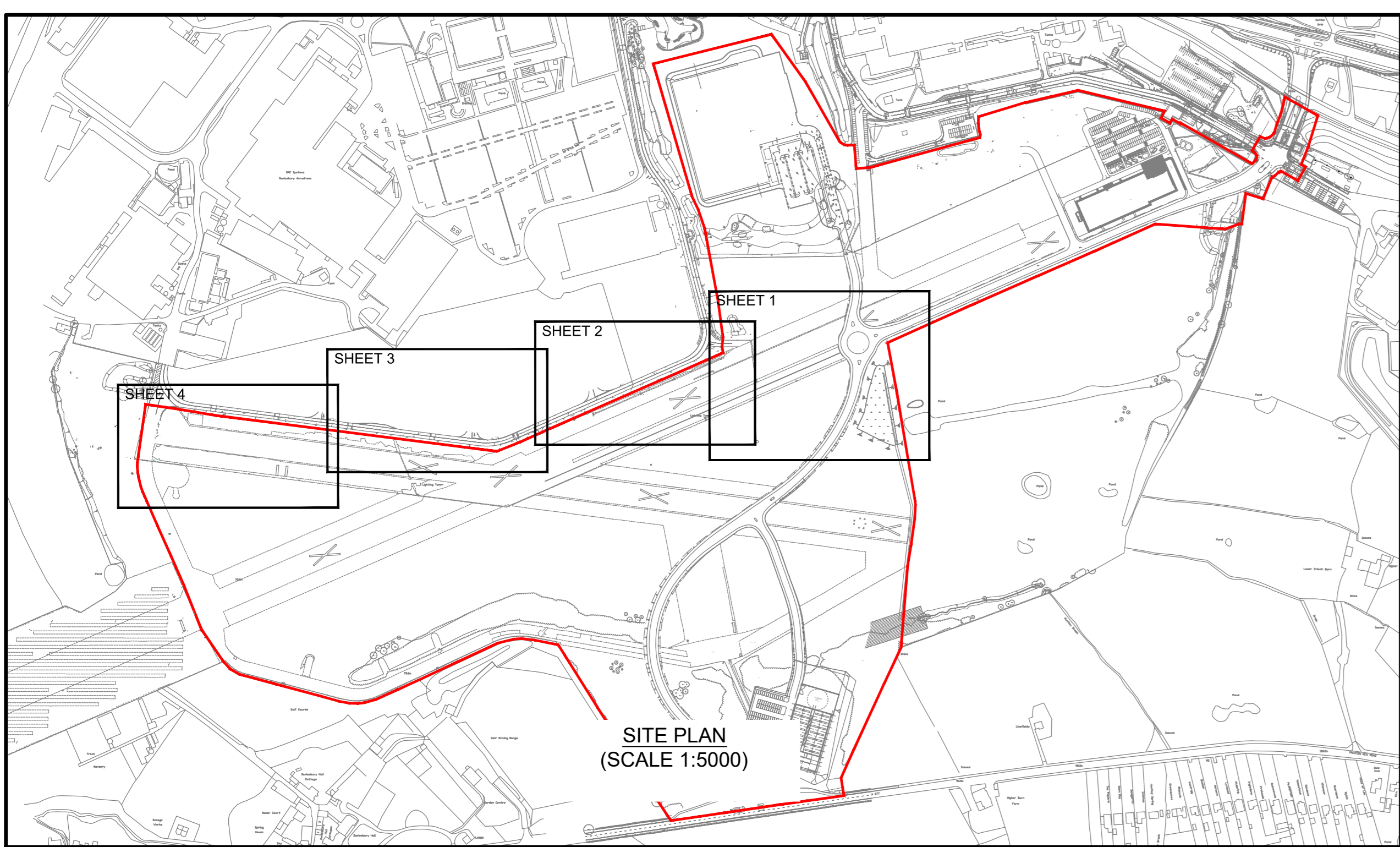
Based on: Architect Dwg No. X Structural Dwg No. X Survey Dwg No. X Other Dwg No. X Other Dwg No. X	Rev X Rev X Rev X Rev X Rev X
--------------------------------------------------------------------------------------------------------------------	-------------------------------------------

THIS DRAWING MAY INDICATE ELEMENTS RELATED TO FIRE SYSTEMS. THESE ARE INDICATIVE ONLY AND FINAL NUMBER, POSITIONING AND PERFORMANCE MUST BE ESTABLISHED AS PART OF THE COP WORKS TO MAINTAIN THE INTENT OF THE DESIGN FIRE STRATEGY.

NOTES:

- TO BE READ IN CONJUNCTION WITH ALL RELEVANT CUNDAILL DRAWINGS, LOG DRAWINGS AND SEWERS FOR ADOPTION 7TH EDITION AND CESW...
- THIS DRAWING IS SUBJECT TO CHANGE DEPENDING ON FURTHER DEVELOPMENT OF THE G.A. SITE LAYOUT OR SCHEME REVISIONS.
- THIS DRAWING IS BASED ON THE ARCHITECT'S SAMPLESBURY - MASTERPLAN - PREFERRED OPTION DEVELOPMENT - 230500, REV A.
- ALL MANHOLE AND PIPE POSITIONS ARE APPROXIMATE AND MAY BE UPDATED FOLLOWING FURTHER DISCUSSIONS WITH THE CONTRACTOR AND RELEVANT AUTHORITIES.
- EXISTING SEWER LOCATIONS AND LEVELS TO BE CONFIRMED BY CONTRACTOR ON SITE, PRIOR TO WORK COMMENCING.
- ALL PIPES ARE LAID SOFFIT TO SOFFIT U.N.O.
- PROPOSED ADOPTED PIPEWORK WITH LESS THAN THE FOLLOWING DEPTHS TO SOFFIT REQUIRES A CONCRETE SURROUND:
- 1.2m IN ROAD/SERVICE AREAS
- 0.9m IN PEDESTRIAN/LANDSCAPED AREAS AND MAIN CORRIDORS IN PUBLIC OPEN SPACES
- ALL PROPOSED DRAINAGE IS SUBJECT TO CONFIRMATION OF LEVELS OF EXISTING DRAINAGE AT PROPOSED CONNECTION POINTS.
- ALL ADOPTABLE DRAINAGE IS TO BE DESIGNED AND CONSTRUCTED IN ACCORDANCE WITH SEWERS FOR ADOPTION 7TH EDITION AND UNITED UTILITIES STANDARD DETAILS.
- TREE PLANTING IS NOT TO OCCUR WITHIN A MIN OF 3-12m, DEPENDING ON TREE SPECIES, OF THE ADOPTABLE SEWER. IN ACCORDANCE WITH SEWERS FOR ADOPTION 6TH EDITION. REFER TO SEWERS FOR ADOPTION 6TH EDITION, FIGURE 2.3 FOR DETAILS IN RELATION TO TREE SPECIES AND CORRESPONDING MIN DISTANCES FROM THE ADOPTABLE SEWER.

KEY	
	EXISTING SURFACE WATER DRAINAGE
	EXISTING SURFACE WATER DRAINAGE ABANDONED
	EXISTING FLOW CONTROL
	PROPOSED SURFACE WATER DRAINAGE
	PROPOSED HEAD WALL
	PROPOSED FOUL WATER DRAINAGE
	SITE BOUNDARY
	PROPOSED WATER COURSE
	PROPOSED ATTENUATION BASIN
	2m UTILITIES VERGE
	4.5m ACCESS ROAD
	PROPOSED LEVEL
	PROPOSED KNEE RAIL



ting Tower
CCTV

SHEET 1 PLAN
(SCALE 1:250)

True scale at 1:1

MODIFICATIONS TO EXISTING ATTENUATION BASIN IN ABEYANCE

OPEN CHANNEL
IL 78.13

OPEN CHANNEL
IL 79.00H

P2	25/01/21	LAYOUT REVISED	LK	MH	MH
P1	25/11/20	FIRST ISSUE	LK	JH	BW
Issue	Date	Description	By	Chkd	Verfd

Project
SAMPLESBURY ENTERPRISE ZONE

Client
LANCASHIRE COUNTY COUNCIL

Title
PROPOSED DRAINAGE AND WATER COURSE LAYOUT & SECTIONS SHEET 1 OF 4

Drawing Status
FOR APPROVAL

Project No. 1023121	Scale AS SHOWN
------------------------	-------------------

CUNDALL
10th Floor, Manchester One
53 Portland Street
Manchester, M1 3LD
Tel: +44 (0)161 244 5660
Website: www.cundall.com

SEZ-CDL-SW-XX-DR-C-15011