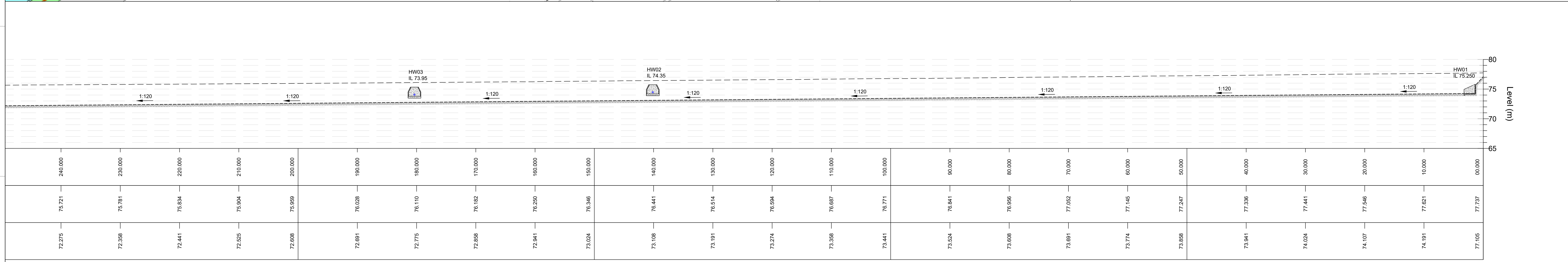
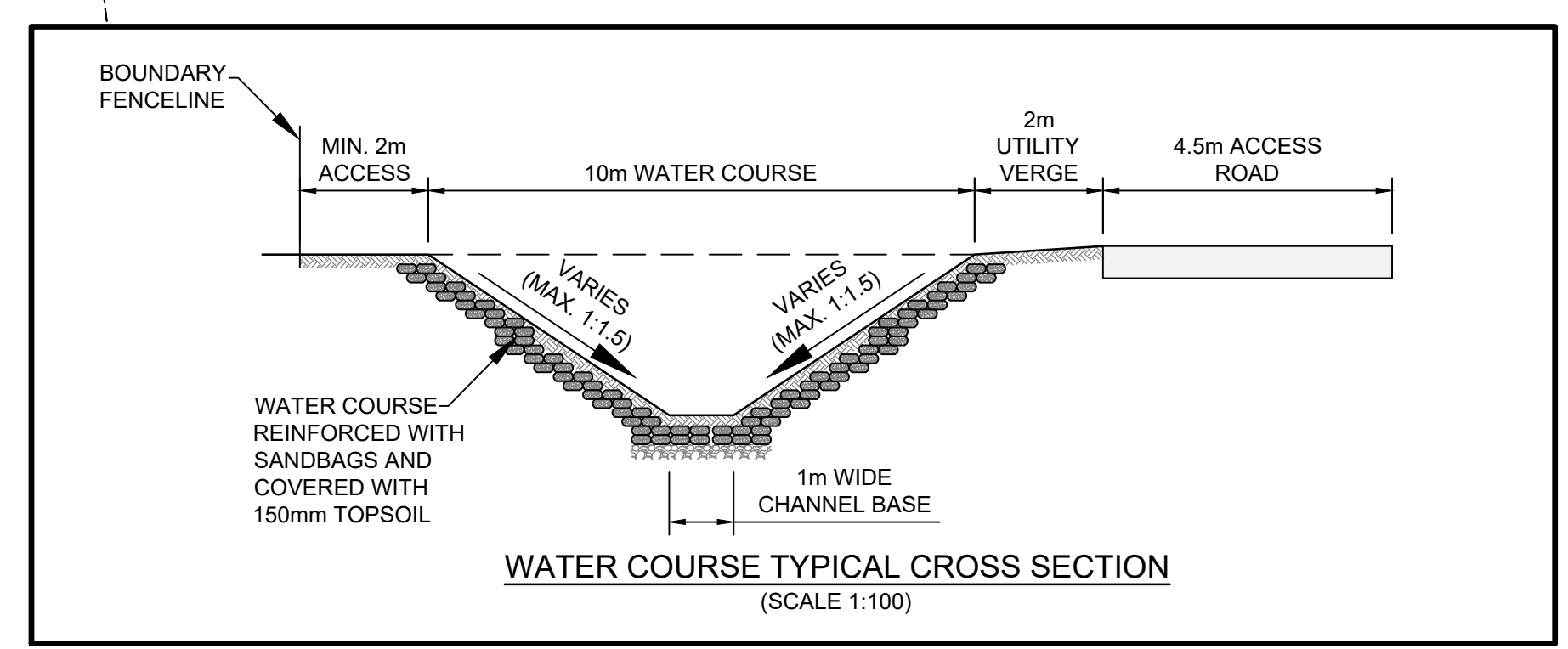
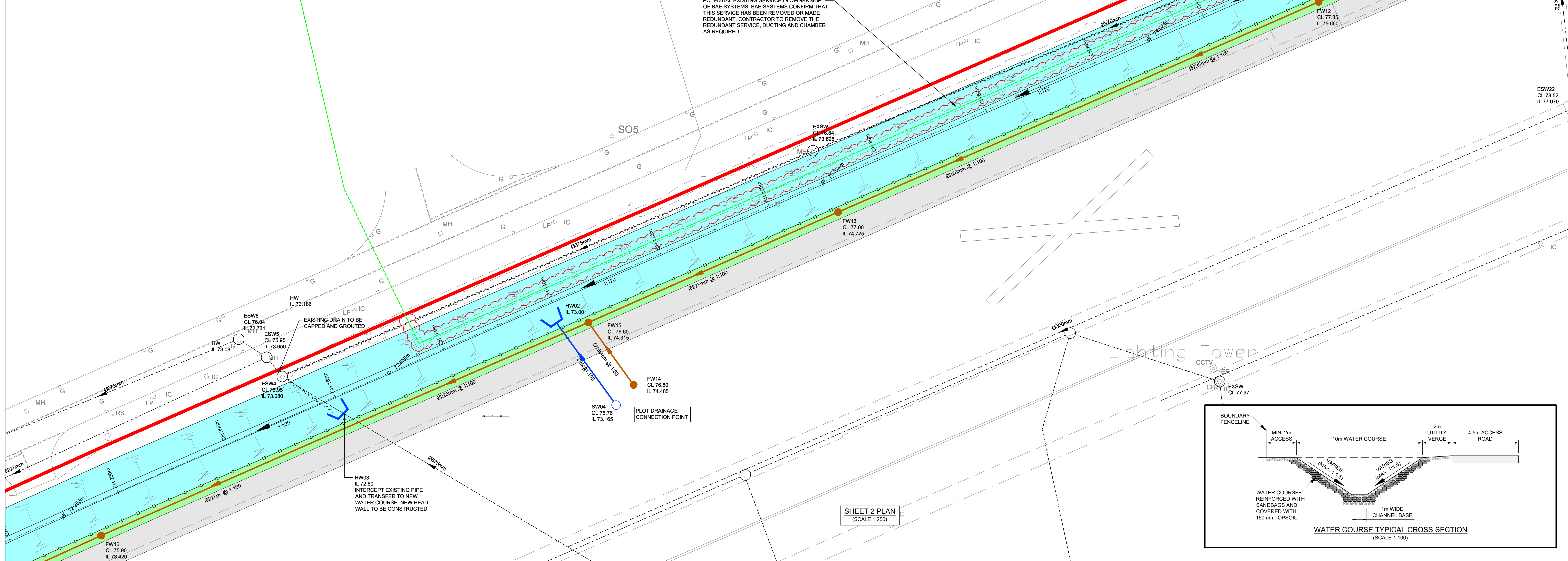
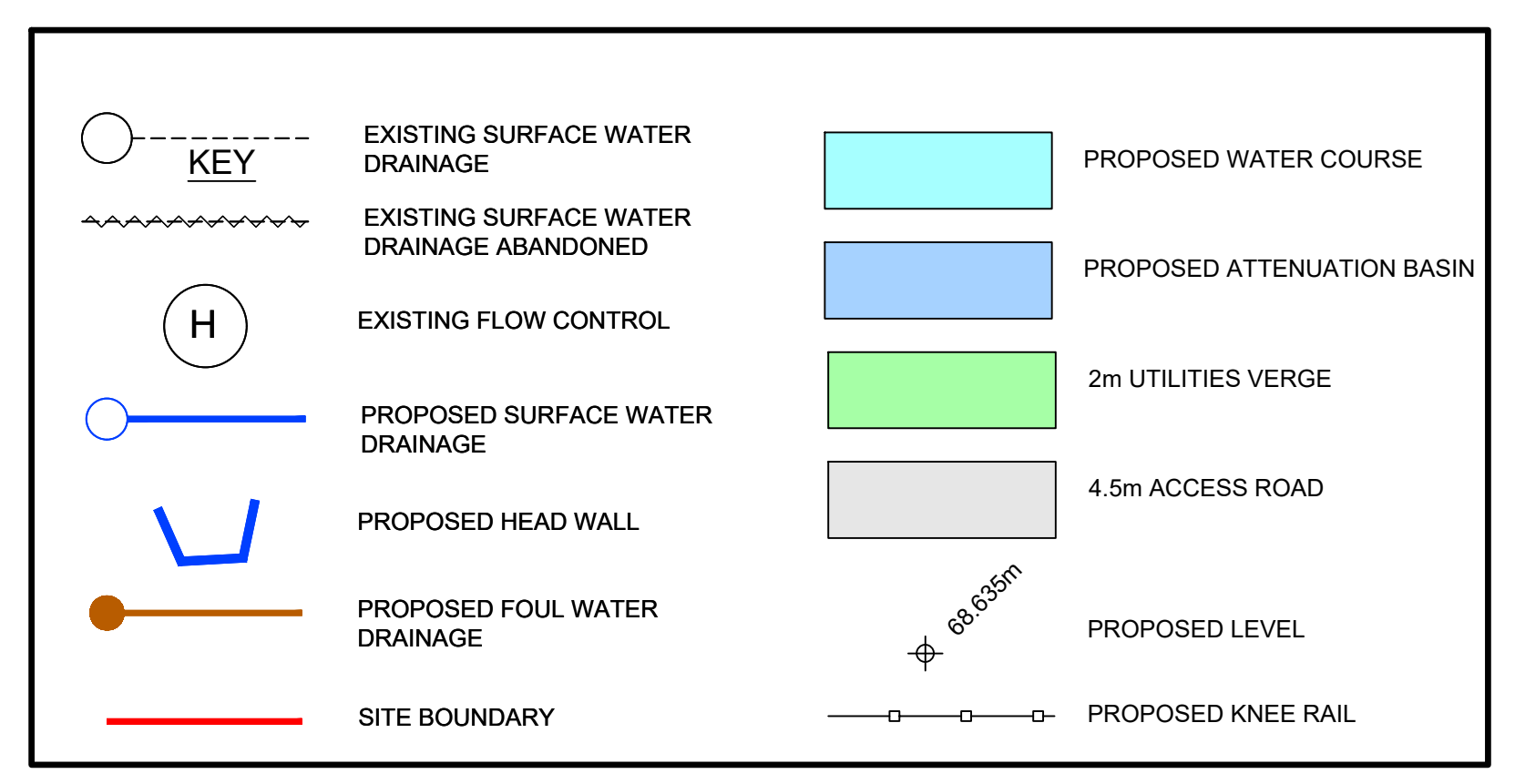
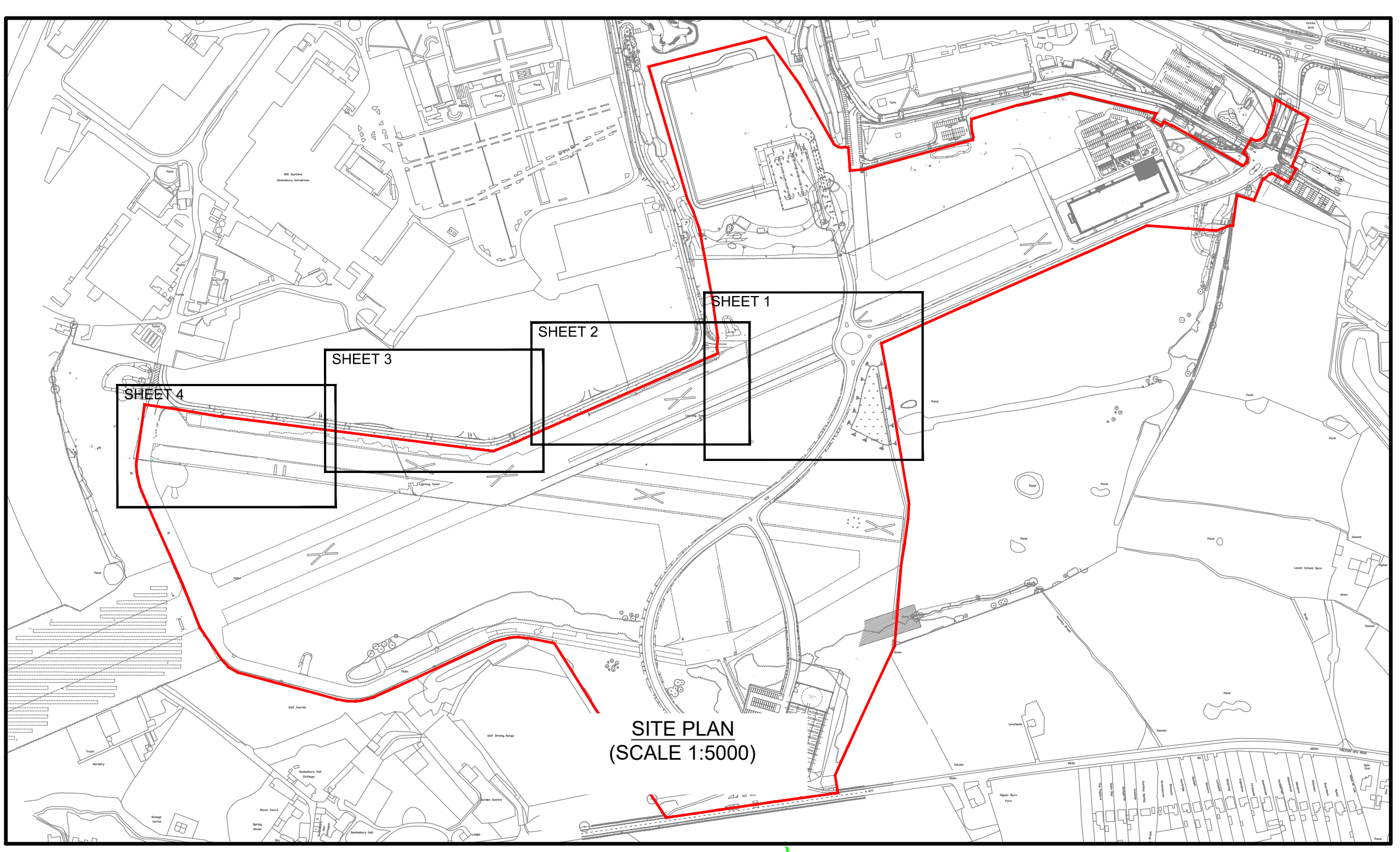


Based on:  
 Architects Dwg No. X  
 Structural Dwg No. X  
 Survey Dwg No. X  
 Other Dwg No. X

THIS DRAWING MAY INDICATE ELEMENTS RELATED TO FIRE SYSTEMS. THESE ARE INDICATIVE ONLY AND FINAL NUMBER, POSITIONING AND PERFORMANCE MUST BE ESTABLISHED AS PART OF THE COP WORKS TO MAINTAIN THE INTENT OF THE DESIGN FIRE STRATEGY.

- NOTES:**
- TO BE READ IN CONJUNCTION WITH ALL RELEVANT CUNDAILL DRAWINGS, LCC DRAWINGS AND SEWERS FOR ADOPTION 7TH EDITION AND CESWI.
  - THIS DRAWING IS SUBJECT TO CHANGE DEPENDING ON FURTHER DEVELOPMENT OF THE G.A. SITE LAYOUT OR SCHEME REVISIONS.
  - THIS DRAWING IS BASED ON THE ARCHITECT'S SAMPLESBURY - MASTERPLAN - PREFERRED OPTION DEVELOPMENT - 230920\_REV1A.
  - ALL MANHOLE AND PIPE POSITIONS ARE APPROXIMATE AND MAY BE UPDATED FOLLOWING FURTHER DISCUSSIONS WITH THE CONTRACTOR AND RELEVANT AUTHORITIES.
  - EXISTING SEWER LOCATIONS AND LEVELS TO BE CONFIRMED BY CONTRACTOR ON SITE, PRIOR TO WORK COMMENCING.
  - ALL PIPES ARE LAID SOFFIT TO SOFFIT U.N.O.
  - PROPOSED ADOPTED PIPEWORK WITH LESS THAN THE FOLLOWING DEPTHS TO SOFFIT REQUIRES A CONCRETE SURROUND:
    - 1.2m IN ROADS/SERVICE AREAS
    - 0.9m IN PEDESTRIAN/LANDSCAPED AREAS AND MAIN CORRIDORS IN PUBLIC OPEN SPACES
  - ALL PROPOSED DRAINAGE IS SUBJECT TO CONFIRMATION OF LEVELS OF EXISTING DRAINAGE AT PROPOSED CONNECTION POINTS.
  - ALL ADOPTABLE DRAINAGE IS TO BE DESIGNED AND CONSTRUCTED IN ACCORDANCE WITH SEWERS FOR ADOPTION 7TH EDITION AND UNITED UTILITIES STANDARD DETAILS.
  - TREE PLANTING IS NOT TO OCCUR WITHIN A MIN OF 3-12m, DEPENDING ON TREE SPECIES, OF THE ADOPTABLE SEWER, IN ACCORDANCE WITH SEWERS FOR ADOPTION 6TH EDITION. REFER TO SEWERS FOR ADOPTION 6TH EDITION, FIGURE 2.3 FOR DETAILS IN RELATION TO TREE SPECIES AND CORRESPONDING MIN DISTANCES FROM THE ADOPTABLE SEWER.



WATERCOURSE LONG SECTION  
 SCALE: H 1:250, V 1:250, DATUM: 65.000

P1	25/01/21	FIRST ISSUE	LK	MH	BW
----	----------	-------------	----	----	----

Project: **SAMPLESBURY ENTERPRISE ZONE**  
 Client: **LANCASHIRE COUNTY COUNCIL**

Title: **PROPOSED DRAINAGE AND WATER COURSE LAYOUT & SECTIONS SHEET 2 OF 4**

Drawing Status: **FOR APPROVAL**  
 Project No: 1023121  
 Scale: AS SHOWN



Drawing No: **SEZ-CDL-SW-XX-DR-C-15011**