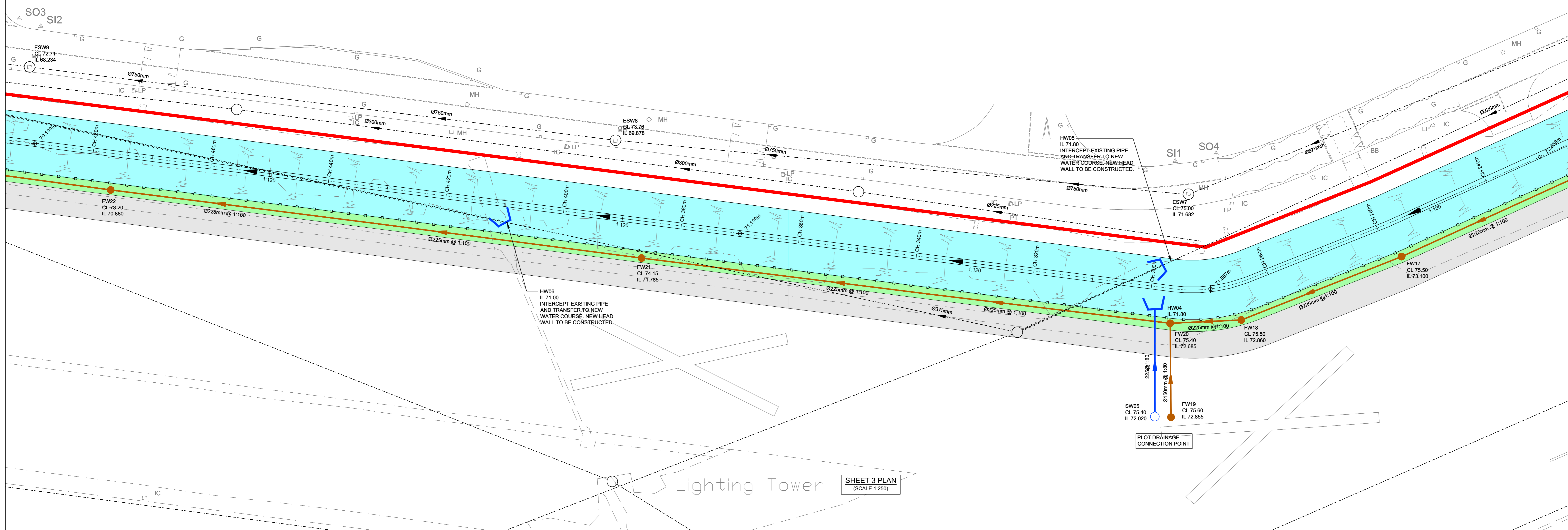
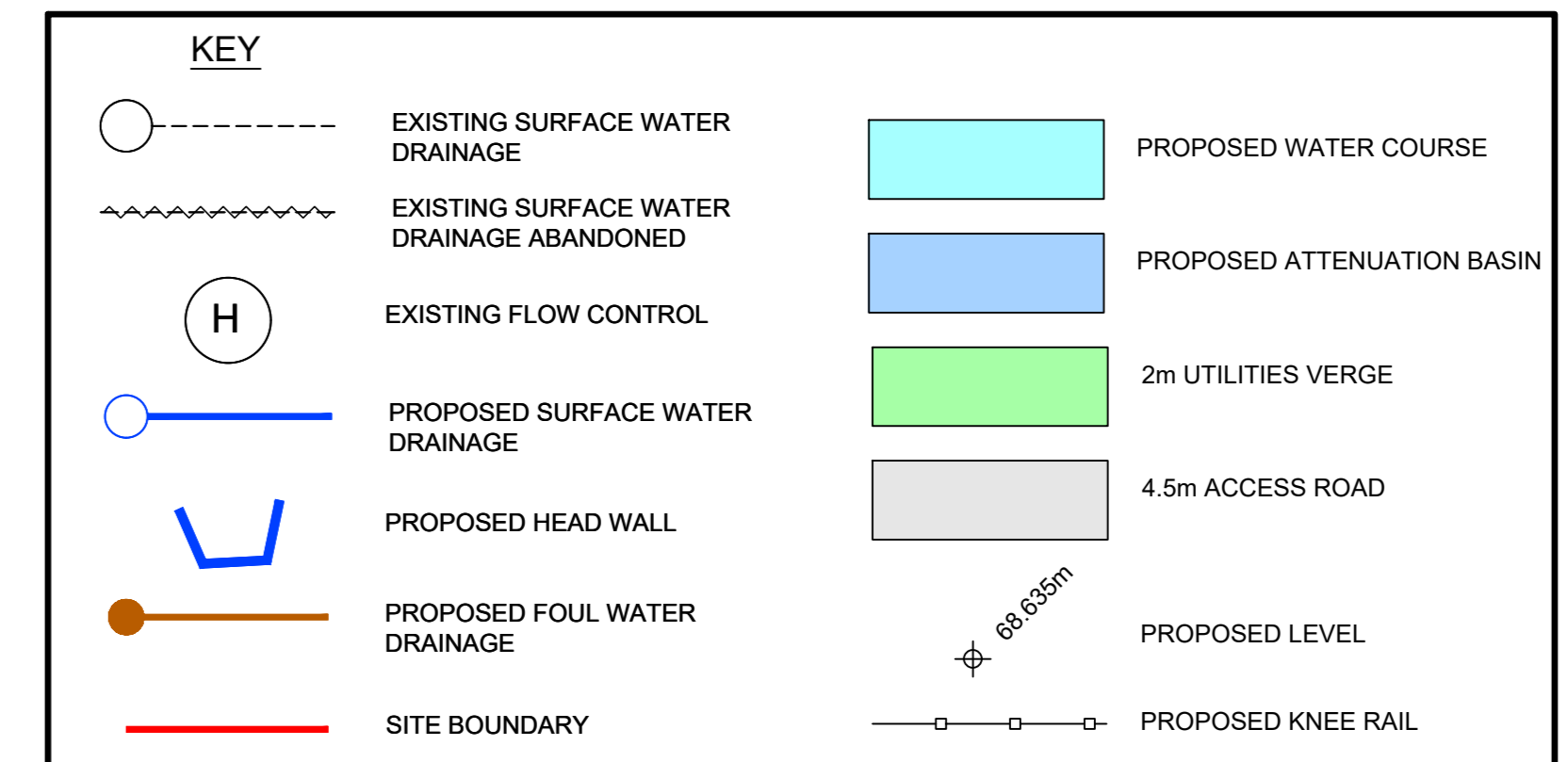
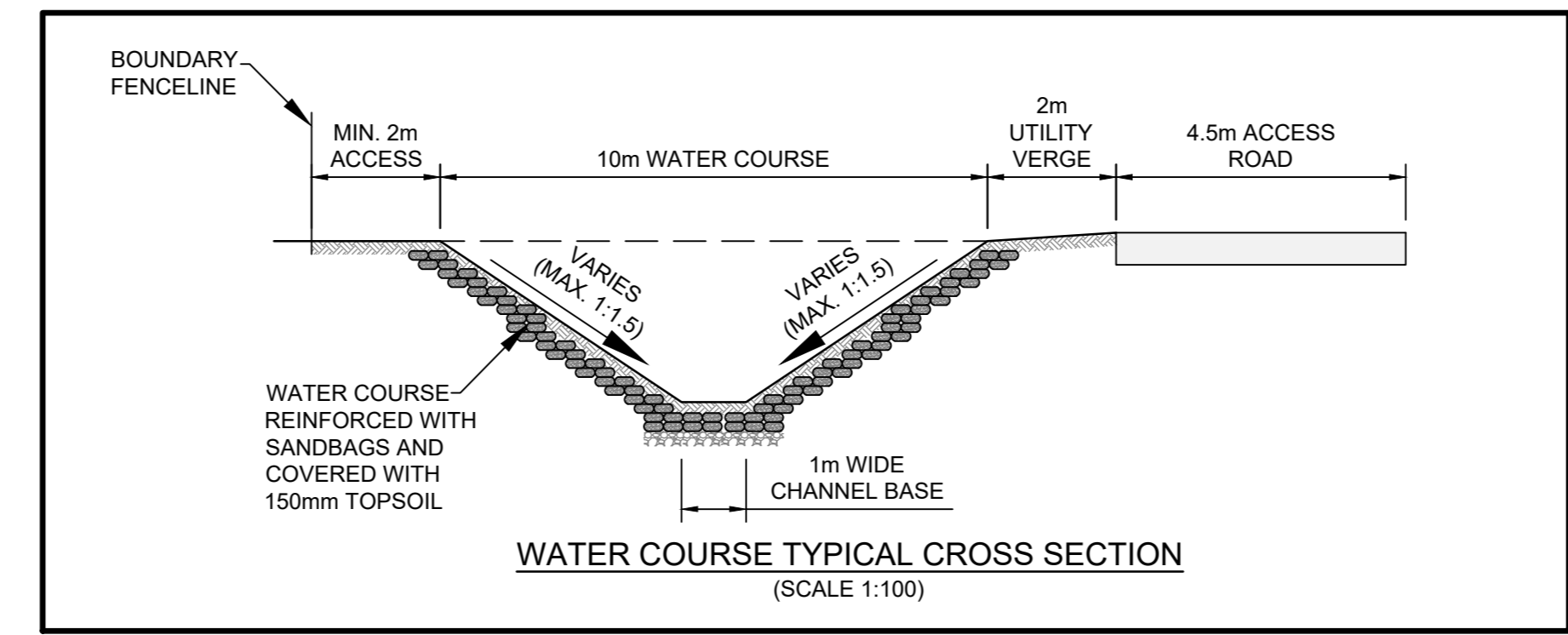
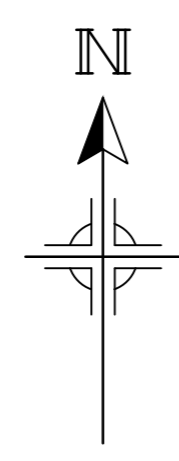
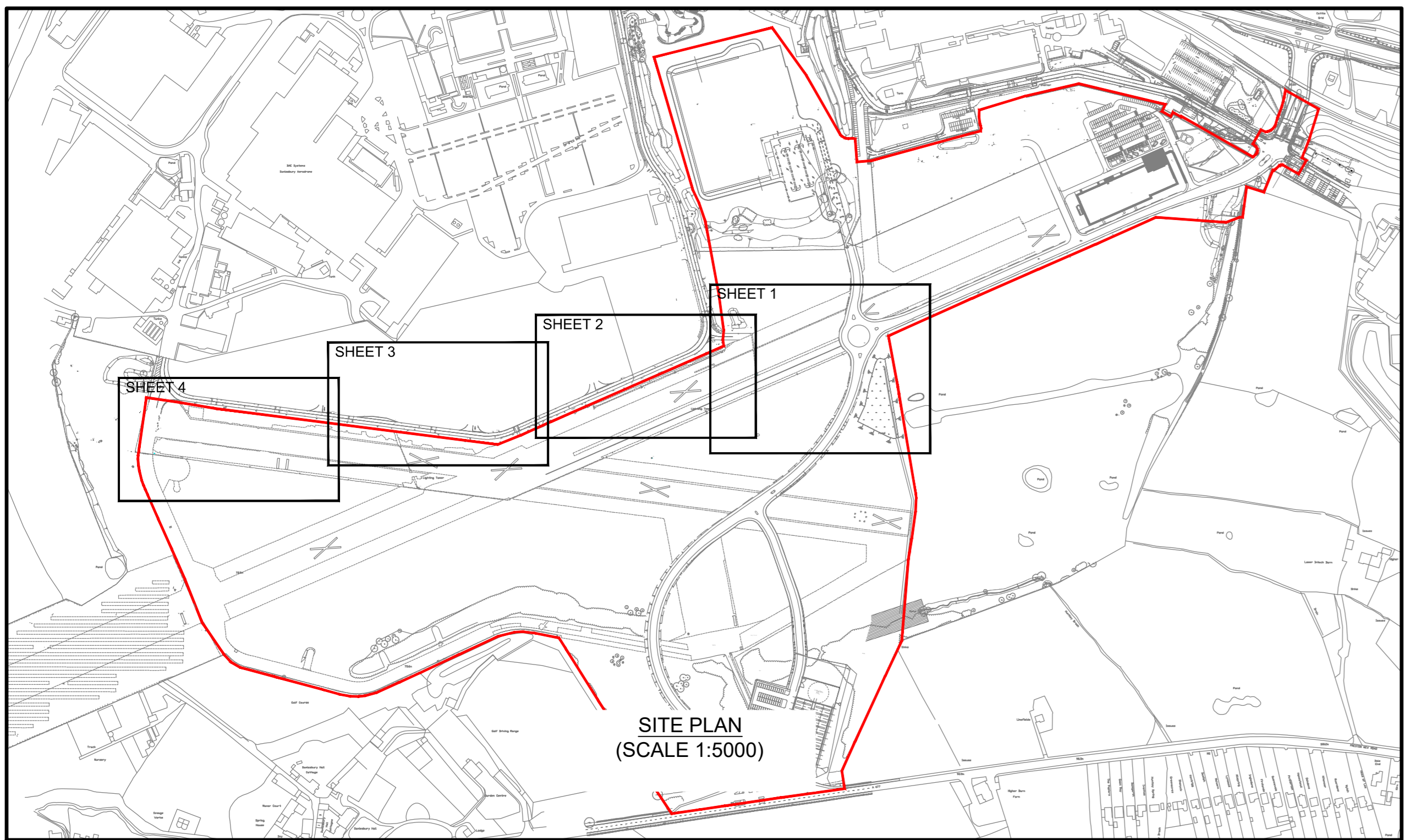


Based on:	Architects Dwg No. X	Rev X
	Structural Dwg No. X	Rev X
	Survey Dwg No. X	Rev X
	Other Dwg No. X	Rev X

THIS DRAWING MAY INDICATE ELEMENTS RELATED TO FIRE SYSTEMS. THESE ARE INDICATIVE ONLY AND FINAL NUMBER, POSITIONING AND PERFORMANCE MUST BE ESTABLISHED AS PART OF THE COP WORKS TO MAINTAIN THE INTENT OF THE DESIGN FIRE STRATEGY.

- NOTES:**
- TO BE READ IN CONJUNCTION WITH ALL RELEVANT CURTAIN DRAWINGS, LCC DRAWINGS AND SEWERS FOR ADOPTION 7TH EDITION AND CESW...
 - THIS DRAWING IS SUBJECT TO CHANGE DEPENDING ON FURTHER DEVELOPMENT OF THE G.A. SITE LAYOUT OR SCHEME REVISIONS.
 - THIS DRAWING IS BASED ON THE ARCHITECT'S SAMPLESURY - MASTERPLAN - PREFERRED OPTION DEVELOPMENT - 230920_SEVA.
 - ALL MANHOLE AND PIPE POSITIONS ARE APPROXIMATE AND MAY BE UPDATED FOLLOWING FURTHER DISCUSSIONS WITH THE CONTRACTOR AND RELEVANT AUTHORITIES.
 - EXISTING SEWER LOCATIONS AND LEVELS TO BE CONFIRMED BY CONTRACTOR ON SITE, PRIOR TO WORK COMMENCING.
 - ALL PIPES ARE LAID SOFFIT TO SOFFIT U.N.O.
 - PROPOSED ADOPTED PIPEWORK WITH LESS THAN THE FOLLOWING DEPTHS TO SOFFIT REQUIRES A CONCRETE SURROUND:
 - 1.2m IN ROADS/SERVICE AREAS.
 - 0.8m IN PEDESTRIAN/LANDSCAPED AREAS AND MAIN CORRIDORS IN PUBLIC OPEN SPACES.
 - ALL PROPOSED DRAINAGE IS SUBJECT TO CONFIRMATION OF LEVELS OF EXISTING DRAINAGE AT PROPOSED CONNECTION POINTS.
 - ALL ADOPTABLE DRAINAGE IS TO BE DESIGNED AND CONSTRUCTED IN ACCORDANCE WITH SEWERS FOR ADOPTION 7TH EDITION AND UNITED UTILITIES STANDARD DETAILS.
 - TREE PLANTING IS NOT TO OCCUR WITHIN A MIN OF 3-12m, DEPENDING ON TREE SPECIES, OF THE ADOPTABLE SEWER. IN ACCORDANCE WITH SEWERS FOR ADOPTION 6TH EDITION. REFER TO SEWERS FOR ADOPTION 6TH EDITION, FIGURE 2.3 FOR DETAILS IN RELATION TO TREE SPECIES AND CORRESPONDING MIN DISTANCES FROM THE ADOPTABLE SEWER.



Chainage	727.235	490.000	480.000	470.000	460.000	450.000	440.000	430.000	420.000	410.000	400.000	390.000	380.000	370.000	360.000	350.000	340.000	330.000	320.000	310.000	300.000	290.000	280.000	270.000	260.000
Existing Levels	70.167	72.857	73.683	73.162	73.256	73.331	73.431	73.569	73.631	73.743	73.837	73.866	74.062	74.229	74.354	74.507	74.644	74.748	74.919	75.062	75.254	75.315	75.462	75.545	75.625
Proposed Levels		70.190	70.273	70.387	70.440	70.523	70.606	70.690	70.773	70.856	70.940	71.023	71.106	71.190	71.273	71.356	71.440	71.523	71.606	71.689	71.773	71.857	71.941	72.025	72.108

WATERCOURSE LONG SECTION (SCALE: H 1:250, V 1:250, DATUM: 65.000)

P1 25/01/21	FIRST ISSUE	LK	MH	BW
-------------	-------------	----	----	----

Project: **SAMLESBURY ENTERPRISE ZONE**

Client: **LANCASHIRE COUNTY COUNCIL**

Title: **PROPOSED DRAINAGE AND WATER COURSE LAYOUT & SECTIONS SHEET 3 OF 4**

Drawing Status: **FOR APPROVAL**

Project No.	1023121	Scale	AS SHOWN
-------------	---------	-------	----------



10th Floor, Manchester One
53 Portland Street
Manchester, M1 3LD
Tel: +44 (0)161 244 5660

Website: www.cundall.com

Drawing No.: **SEZ-CDL-SW-XX-DR-C-15011**