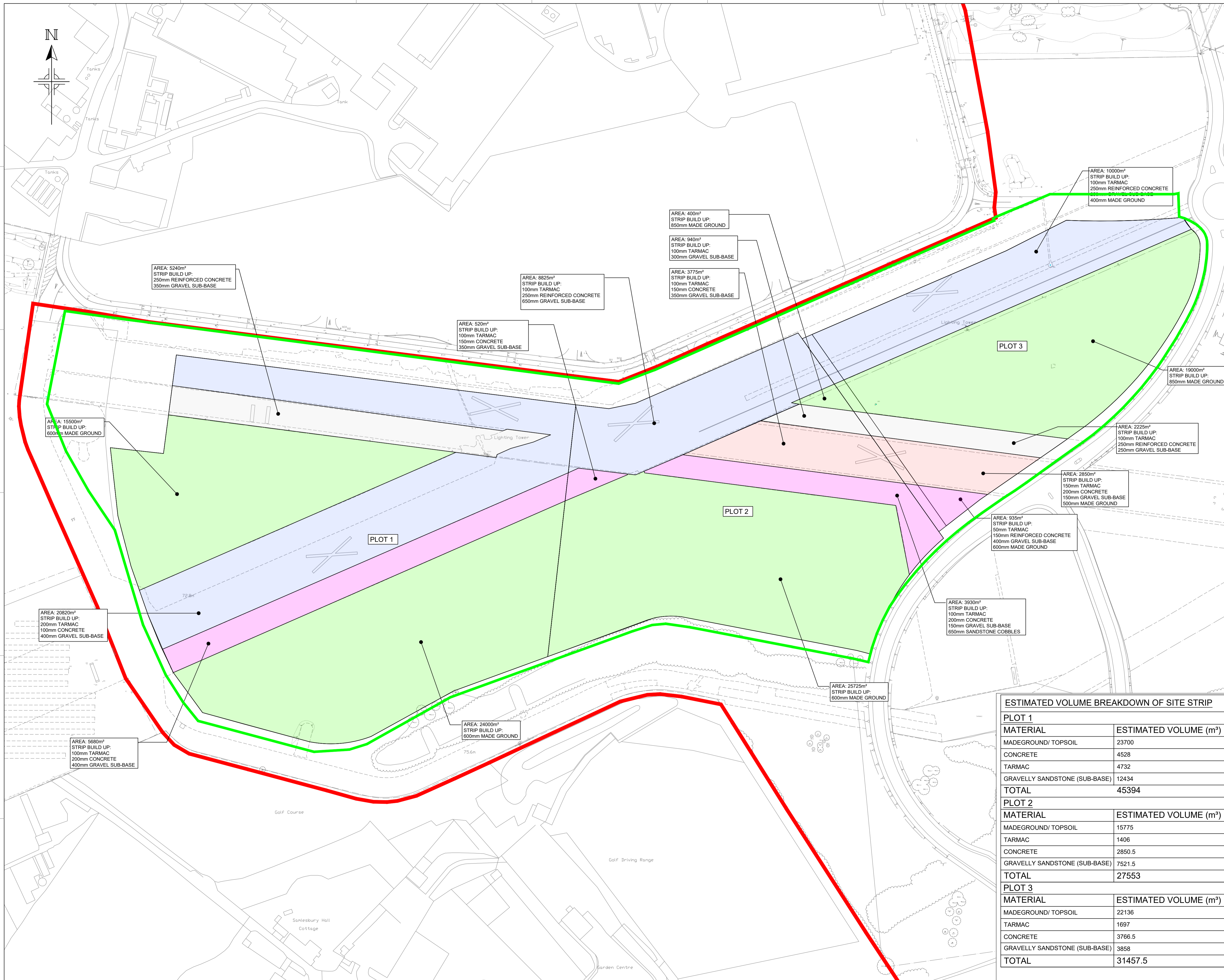


Based on:
 Architects Dwg No. X
 Structural Dwg No. X
 Survey Dwg No. X
 Other Dwg No. X
 Other Dwg No. X

Rev
 X
 Rev
 X
 Rev
 X

NOTES:

- 1) TO BE READ IN CONJUNCTION WITH ALL RELEVANT CUNDALL DRAWINGS
- 2) DEPTH OF SITE STRIP BASED ON EXTENT REQUIRED TO REMOVE MADEGROUND. SITE STRIP TO BE 350mm DEEP IN AREAS OF NATURAL TOPSOIL.
- 3) VOLUME BREAKDOWN OF SITE STRIP AND REQUIRED DIG DEPTHS TO REMOVE MADEGROUND BASED ON INTERPOLATION OF GROUNDTECH BASED ON INVESTIGATION TRIAL PIT LOGS (SEE GROUNDTECH DRAWING SSS-9472 FOR TRIAL PIT LOCATIONS). ACTUAL VOLUMES AND DIG DEPTH REQUIREMENTS MAY DIFFER ON SITE.



P1	03/02/21	FIRST ISSUE	LK	MH	BW
Issue	Date	Description	By	Chkd	Verfd

Project
SAMLESBURY ENTERPRISE ZONE

Client
LANCASHIRE COUNTY COUNCIL

Title
EARTHWORK SITE STRIP VOLUMETRIC ANALYSIS ZONE C

Drawing Status
FOR INFORMATION

Project No. 1023121 Scale 1:1250

CUNDALL
 10th Floor, Manchester One
 53 Portland Street
 Manchester, M1 3AH
 Tel: +44 (0)161 244 5660
 Website: www.cundall.com

Drawing No.
SEZ-CDL-SW-XX-DR-C-65022

ESTIMATED VOLUME BREAKDOWN OF SITE STRIP	
PLOT 1	
MATERIAL	ESTIMATED VOLUME (m³)
MADEGROUND/ TOPSOIL	23700
CONCRETE	4528
TARMAC	4732
GRAVELLY SANDSTONE (SUB-BASE)	12434
TOTAL	45394
PLOT 2	
MATERIAL	ESTIMATED VOLUME (m³)
MADEGROUND/ TOPSOIL	15775
TARMAC	1406
CONCRETE	2850.5
GRAVELLY SANDSTONE (SUB-BASE)	7521.5
TOTAL	27553
PLOT 3	
MATERIAL	ESTIMATED VOLUME (m³)
MADEGROUND/ TOPSOIL	22136
TARMAC	1697
CONCRETE	3766.5
GRAVELLY SANDSTONE (SUB-BASE)	3858
TOTAL	31457.5