

| | | |
|---------------------|---|-------|
| Based on: | | |
| Architects Drg No.: | X | Rev X |
| Structural Drg No.: | X | Rev X |
| Survey Drg No.: | X | Rev X |
| Other Drg No.: | X | Rev X |
| Other Drg No.: | X | Rev X |

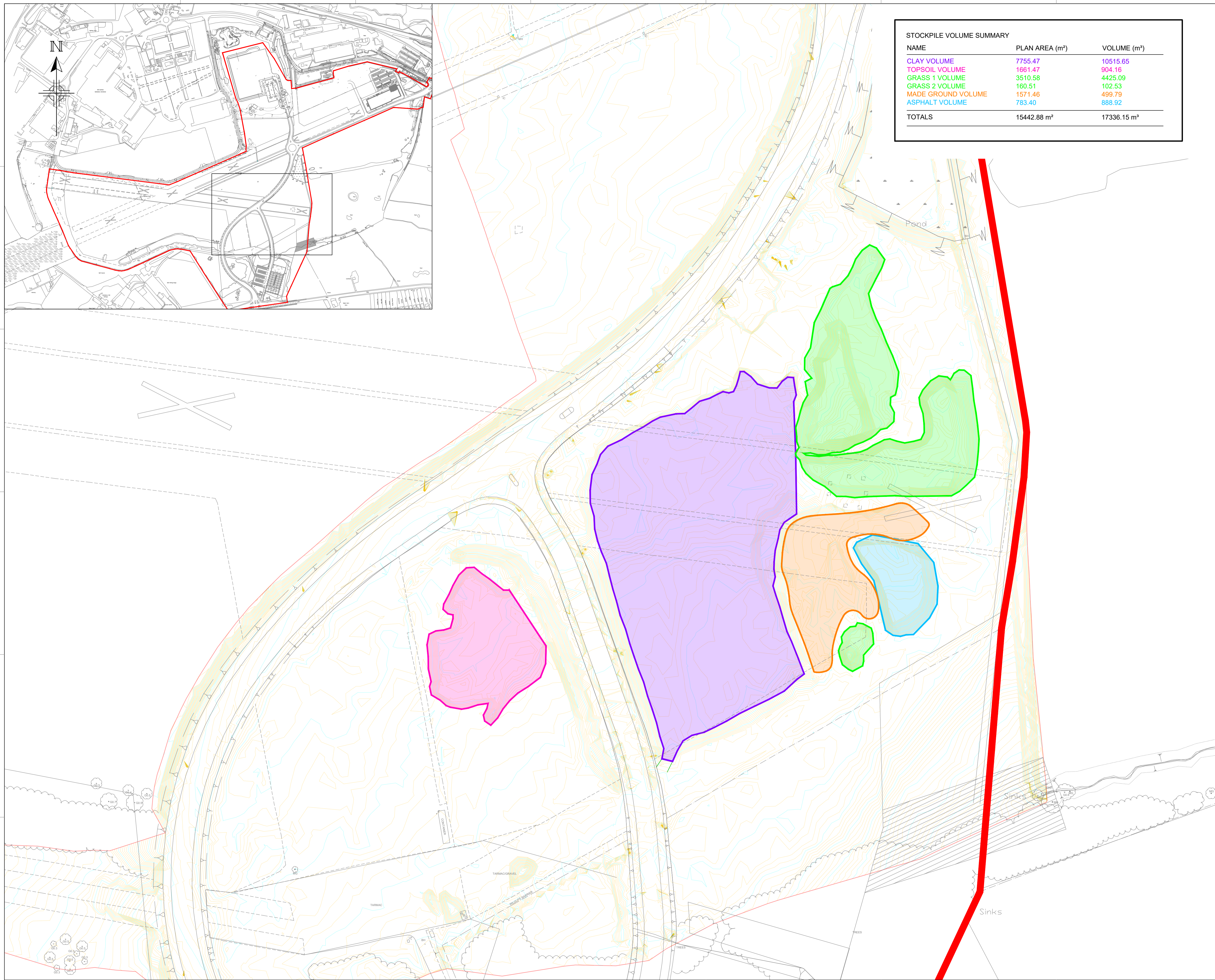
NOTES:

- TO BE READ IN CONJUNCTION WITH ALL RELEVANT CUNDALL DRAWINGS (I.E. GEOTECHNICAL DRAWING 1023121.DWG.GL.002).
- ALL VOLUMES ARE ESTIMATES.
- VOLUMES HAVE BEEN ESTIMATED COMPARING EXISTING TOPOGRAPHICAL SURVEY WITH LATEST TOPOGRAPHICAL SURVEY 20H023_3D

KEY

- █ CLAY STOCKPILE
- █ TOPSOIL STOCKPILE
- █ GRASS BUNDED STOCKPILE
- █ MADE GROUND STOCKPILE
- █ ASPHALT STOCKPILE

| STOCKPILE VOLUME SUMMARY | | |
|--------------------------|-------------------------------|-------------------------------|
| NAME | PLAN AREA (m ²) | VOLUME (m ³) |
| CLAY VOLUME | 7755.47 | 10515.65 |
| TOPSOIL VOLUME | 1661.47 | 904.16 |
| GRASS 1 VOLUME | 3510.58 | 4425.09 |
| GRASS 2 VOLUME | 160.51 | 102.53 |
| MADE GROUND VOLUME | 1571.46 | 499.79 |
| ASPHALT VOLUME | 783.40 | 888.92 |
| TOTALS | 15442.88 m² | 17336.15 m³ |



| | | | | | |
|-------|----------|--------------------|----|------|-------|
| P2 | 17/12/20 | TITLEBLOCK UPDATED | MH | JH | BW |
| P1 | 20/11/20 | FIRST ISSUE | LK | JH | BW |
| Issue | Date | Description | By | Chkd | Verfd |

Project
SAMPLESBURY ENTERPRISE ZONE

Client
LANCASHIRE COUNTY COUNCIL

Title
STOCKPILE VOLUMES

Drawing Status
FOR INFORMATION

| | |
|-------------|--------|
| Project No. | Scale |
| 1023121 | N.T.S. |

CUNDALL
 10th Floor, Manchester One
 53 Portland Street
 Manchester, M1 3AH
 Tel: +44 (0)161 244 5660
 Website: www.cundall.com

Drawing No.
SEZ-CDL-SW-XX-DR-C-65015