

Construction Method Statement

Application to discharge condition 6

For the change of use of land to erect nine holiday lodges with parking and an associated package sewage treatment plant

at

**Bowland Wild Boar Park
Wardsley Road
Chipping
Preston
PR3 2QT**

Scope of Works

The project involves the removal of earth to allow the creation of access tracks and to create level bases for the erection of the lodges. All earth will be used within the site as part of the landscaping. Materials will be brought onto site for the project including timber, roofing materials and hard core, and all lodges will be assembled on site by the supplier.

Preparatory Works

Prior to commencement of works a site induction will take place for all contractors. General working practices and health and safety risk assessments will be considered. Contractors will adhere to the safety rules on site and their own employment liabilities.

An emphasis will be placed on the need for extreme caution along the existing access to the Wild Boar Park and adjacent to the existing camping pods. Warning signage will be issued to patrons and contractors will exercise the utmost care at all times.

Arrangements will be made for:

- Contractor parking
- Delivery of materials and access to the site
- Loading and unloading
- Storage of plant and materials
- Wheel wash facilities
- Recycling facilities for waste from operations
- Hours of operation
- Delivery times
- Dust and dirt control
- Noise control

Parking

Contractor vehicles will be parked within the designated parking area (See site plan). No vehicles will be parked within the visitor car parking areas. Plant and equipment will be left within the site overnight. Any other vehicles will be parked securely in the designated area which will be enclosed within security fencing.

Delivery of materials and plant

Materials delivered to the site will be transported on small HGVs and tractor and dumper trailers. Plant and excavators will remain within the site throughout operations.

Proposed routes are within the accompanying document and are suitable for standard HGVs. As all units will be assembled on site materials will be transported on normal lorries with no abnormal loads.

Loading and unloading

The loading of excavated material will be within the development site boundaries. Care will be taken not to overload vehicles. All goods will be unloaded adjacent to the development site.

Storage of plant and materials

Materials and plant will be stored within the site in designated zones

Wheel Wash

Power wash facilities will be provided so that no mud can be carried onto the highway. Dry material will be swept off the wheels immediately prior to leaving the site.

Re-cycling wastes.

A skip will be located in the site area for waste materials. Plastics and inert materials will be transferred to a waste transfer station.

Hours of Operation

During construction and site clearance, no machinery shall be operated, no processes carried out or deliveries taken or dispatched from the site outside the following times:

0800 hrs to 1800hrs Monday to Friday

0800 hrs to 1300 hrs Saturday (within the site only)

No activities shall take place on Sundays, Bank or Public Holidays.

Delivery Times

No deliveries shall take place outside the Hours of Operation. Wherever possible deliveries will be made on days which have fewest visitor numbers. There is adequate space for all vehicles to turn around within the site.

Dust and Dirt Control

Dust arising from the ground prevalent in dry spells and generated by wind and plant traversing the site will be controlled by spraying water over the ground if required. Any dust created by removal and transfer of topsoil will be suppressed by spraying with water.

Noise Control

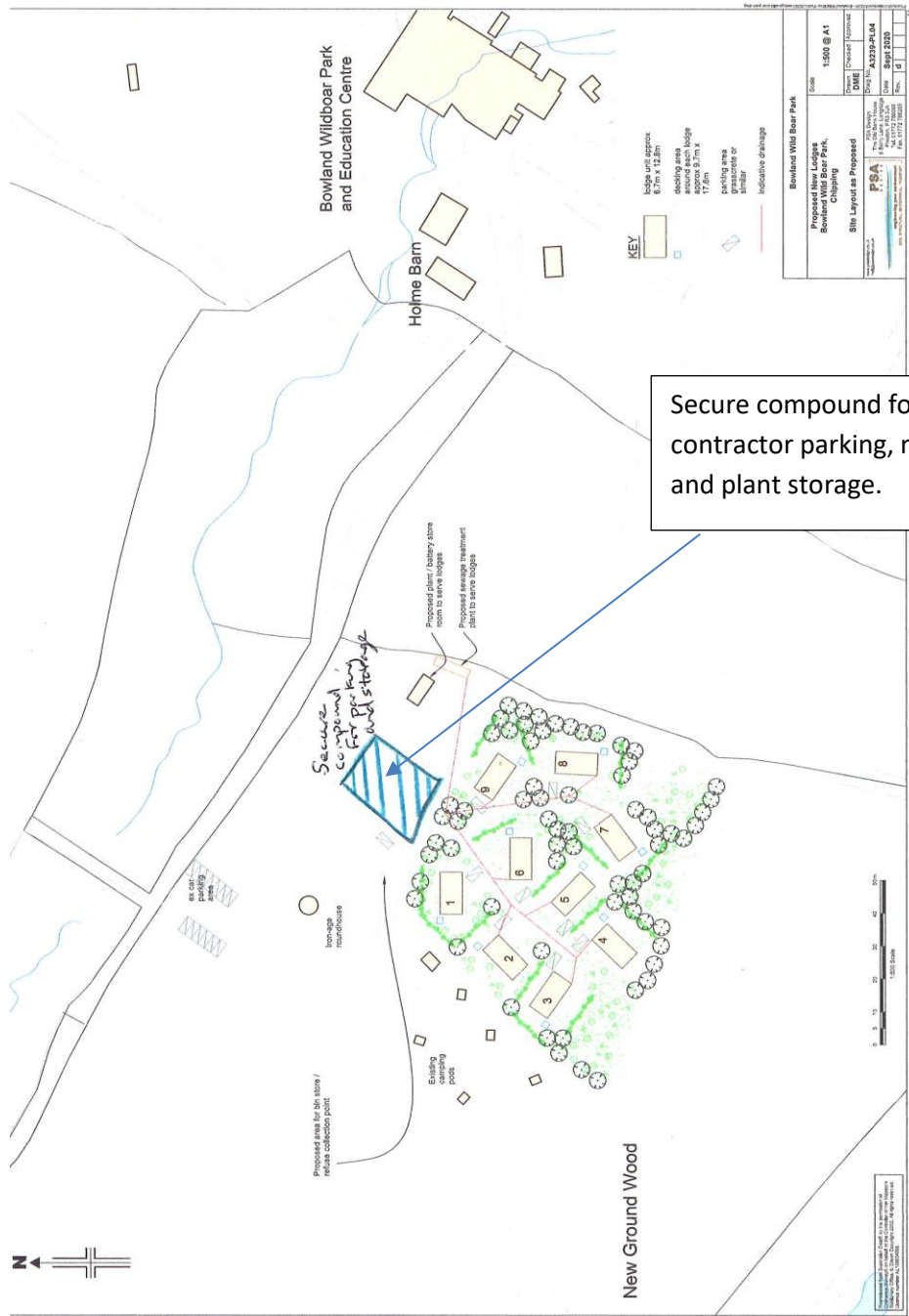
The plant and vehicles will be monitored to ensure all engine noises are suppressed by effective exhaust and silencing equipment. All vehicles and plant must comply with the standards laid down by the Health and Safety executive working directive. Contractors and staff will be made aware of the need to suppress noise wherever possible.

Contractors

Contractors carrying out the works will be overseen and managed by Mr MacDonald. (Contact 07795 570602).

The imperative is to ensure that the proposed works do not impact on visitors to the site and the wider community. Utmost care will be exercised at all times and the direct management will ensure all aspects of the statement are adhered to.

Site plan



Secure compound for contractor parking, materials and plant storage.