

Chris Swinscoe T/A



www.cmstreeservices.co.uk

Date : 18-04-2021

Works Schedule for :

12 The Grange Wilpshire :

T1 Beech tree. This beech tree is in the woodland just over the right hand boundary of No12 The Grange. Tree is situated down a banking slightly. This tree is an edge tree on the endge of a shelter belt. Very tall and thin. Tree has major defect of included bark at around the 50% height mark.

Upon climbing inspection it is clear that this major defect the tree has been trying to heal over the years has been unsuccessful. Thus the wide ears at the side. The crack is evident and runs quite a way down from the union. The main stem leans towards the house and is heavily weighted. This to me iin my professional opinion is also the weaker side of the union. From this union there is another good 40-45' growth ontop of this major defect which is a lot of leverage. Please see pictures.

Considering that there is a young family living so close to these tree's and the tree having said major defect we would like to remove this tree. We do not see bracing as an option as this is costly and means ongoing maintenance for a tree which essentially is only making up a shelter belt. This tree on its own would not warrant a tpo. This would also mean maintaining a tree with a major defect next to a high target area. This is not acceptable to us.

Tree is to be removed, brash and timber is to be left for habitat piles and we are to leave a stem of approx 3m or so for habbitat / monolith.

1 Lane Bottom, Barnoldswick, Lancashire, BB18 5HG Off
Nptc Qualified & Fully Insured Mobile –

info@cmstreeservices.co.uk



je, Wiltshire

3

- Nearby
- Send to your phone
- Share

ickburn

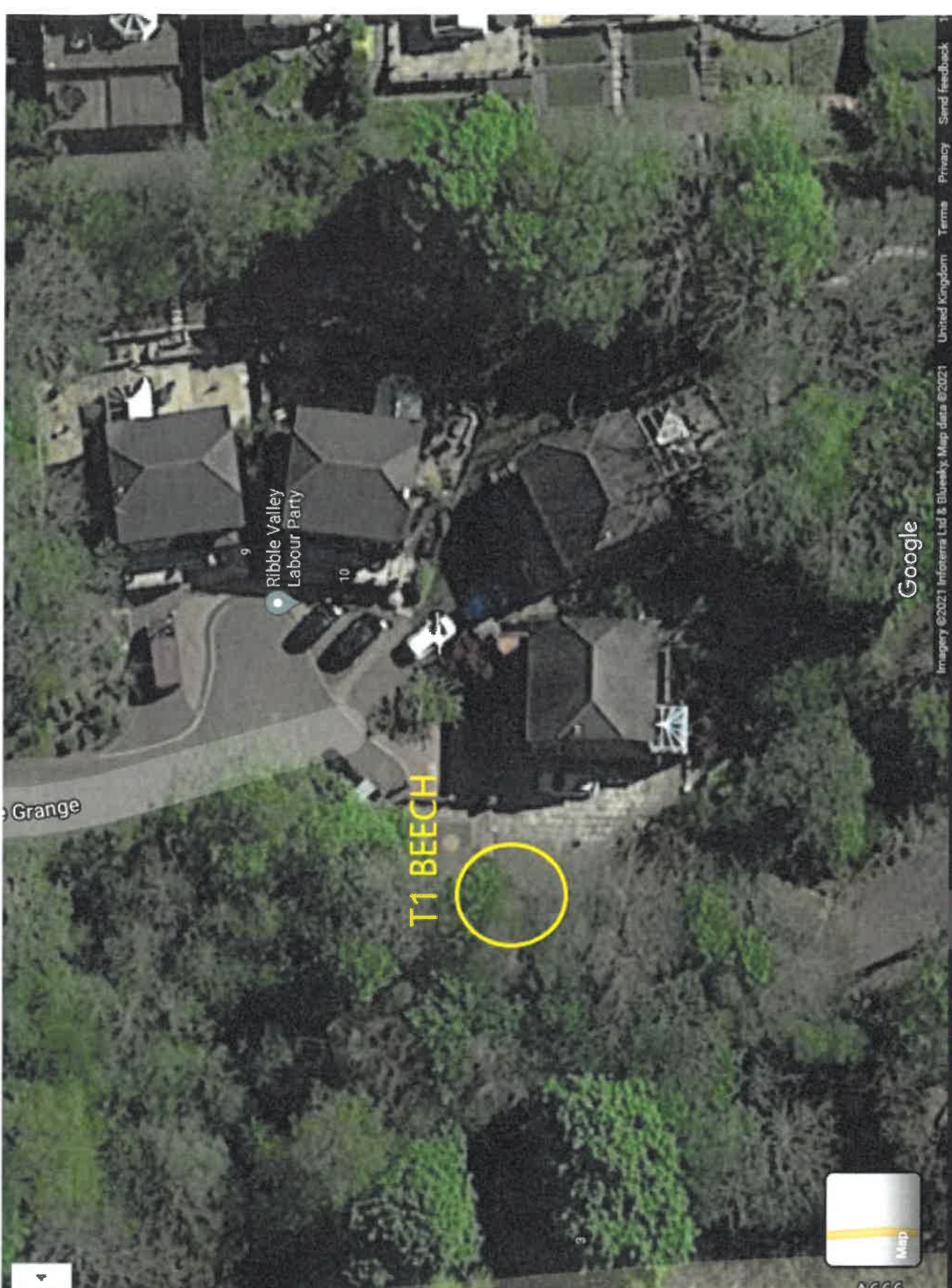
dit on 12 The Grange

g place

iness



to search



Google



















