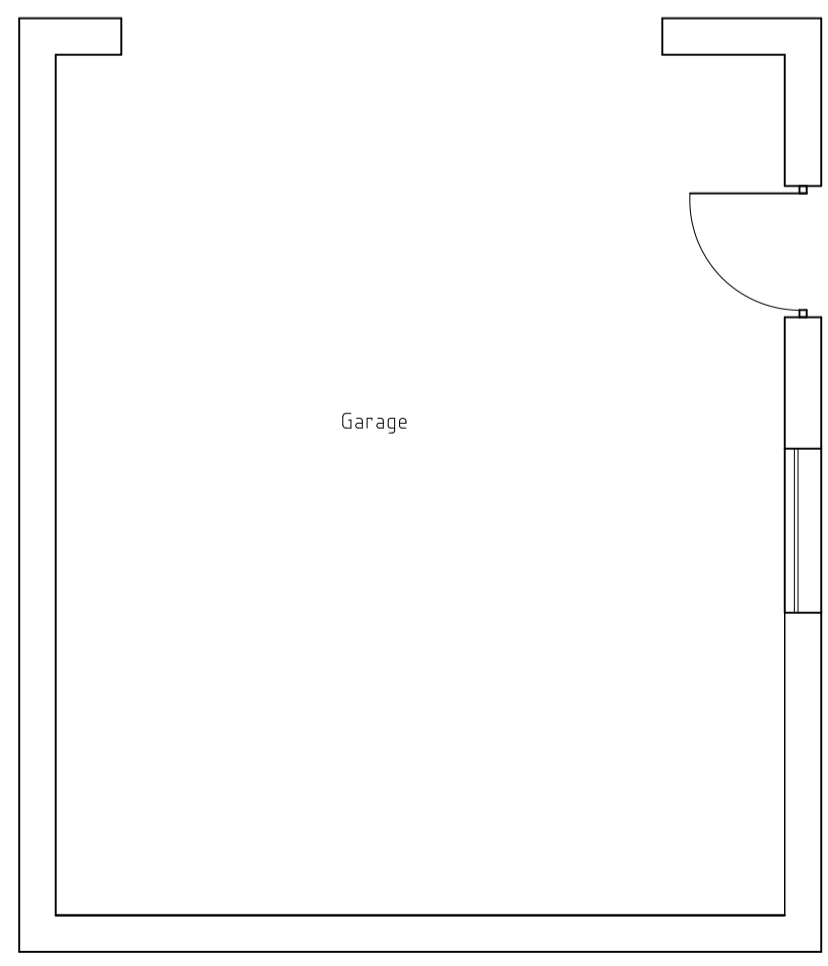
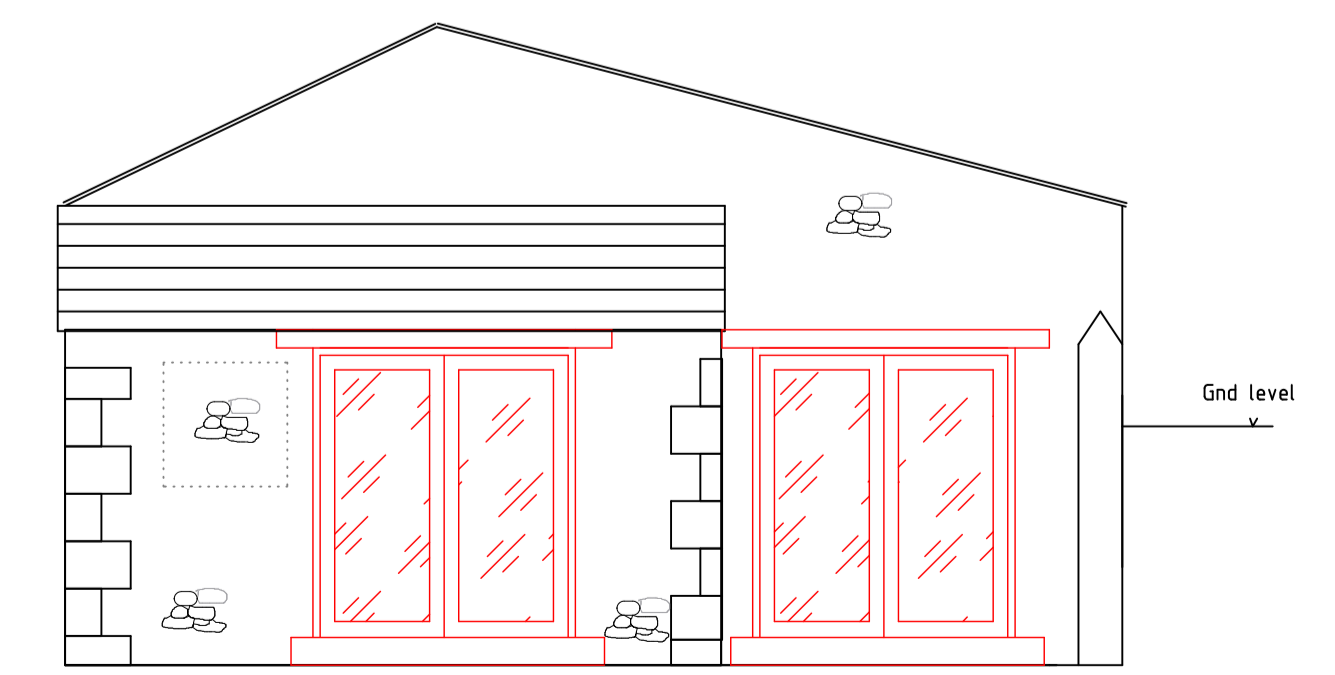
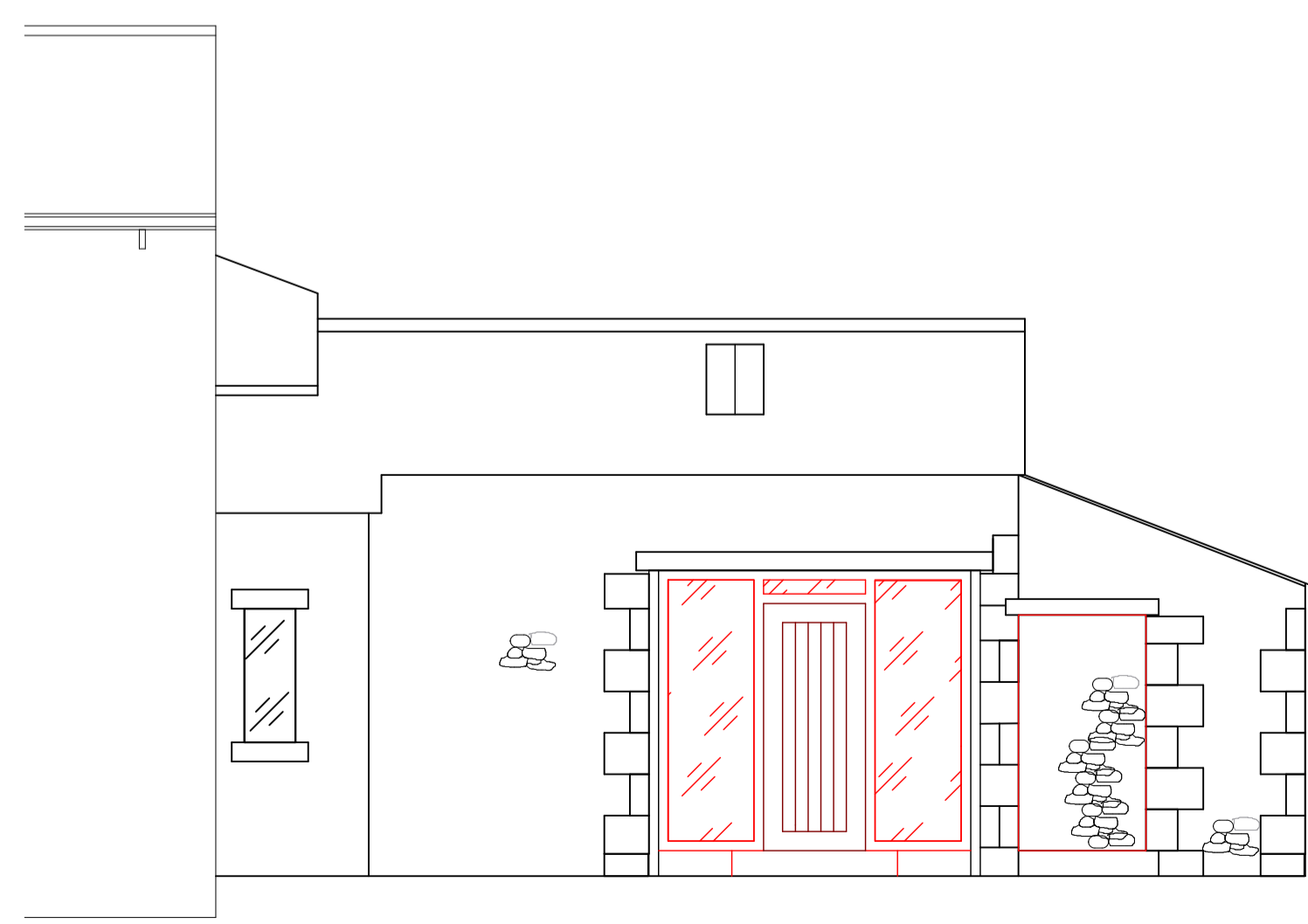
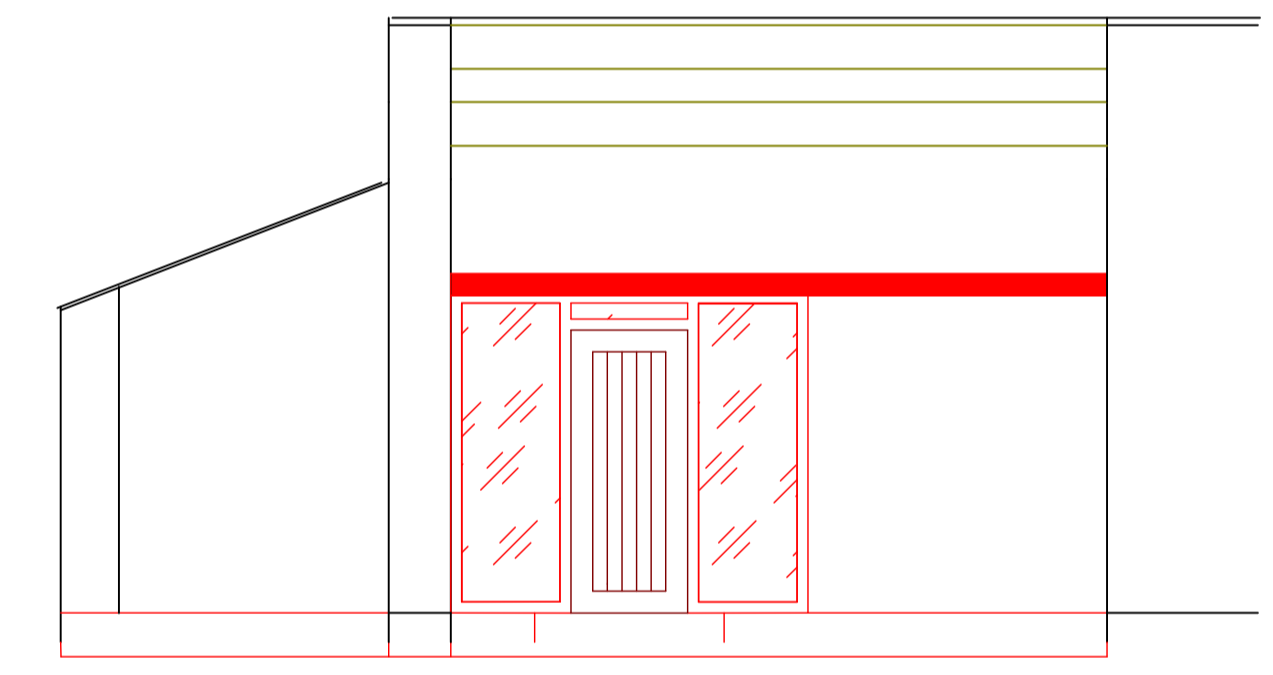
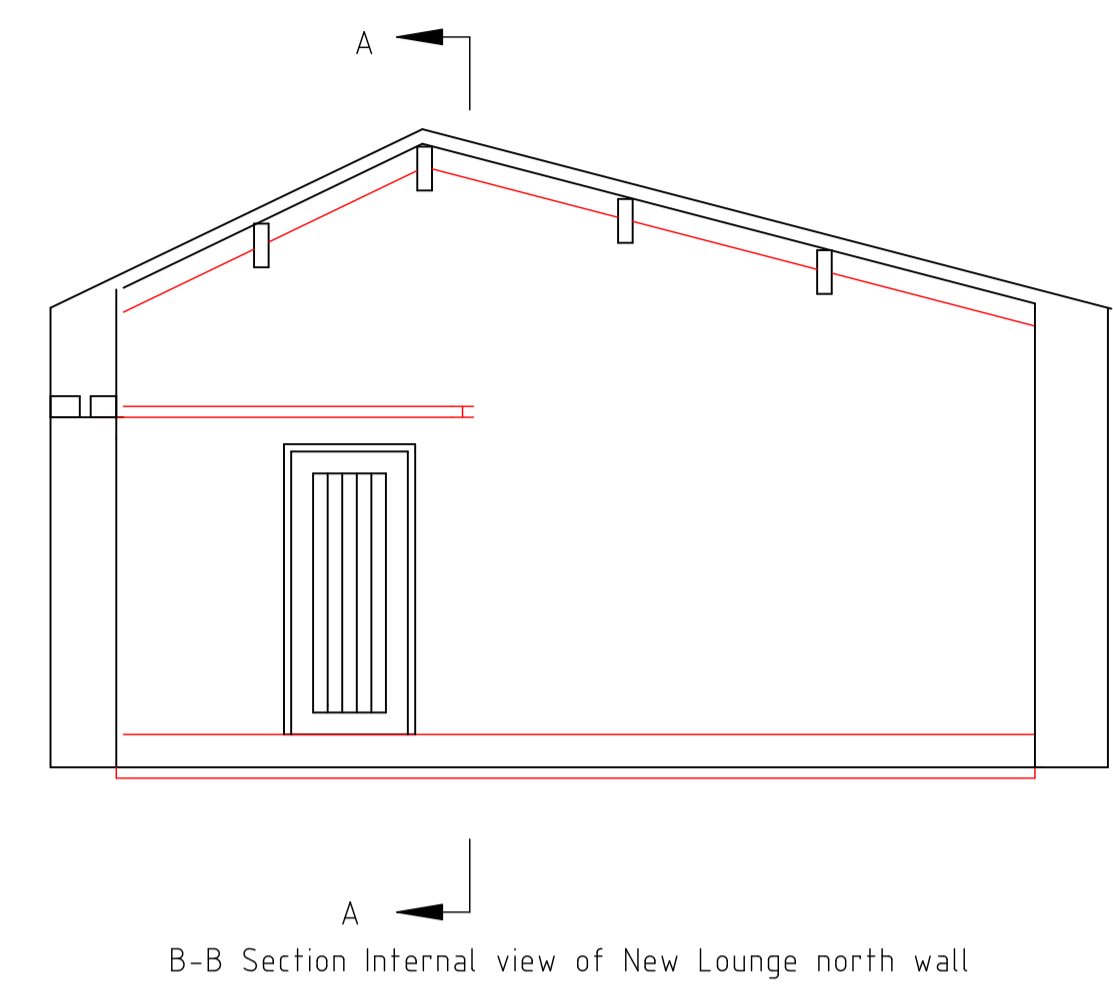
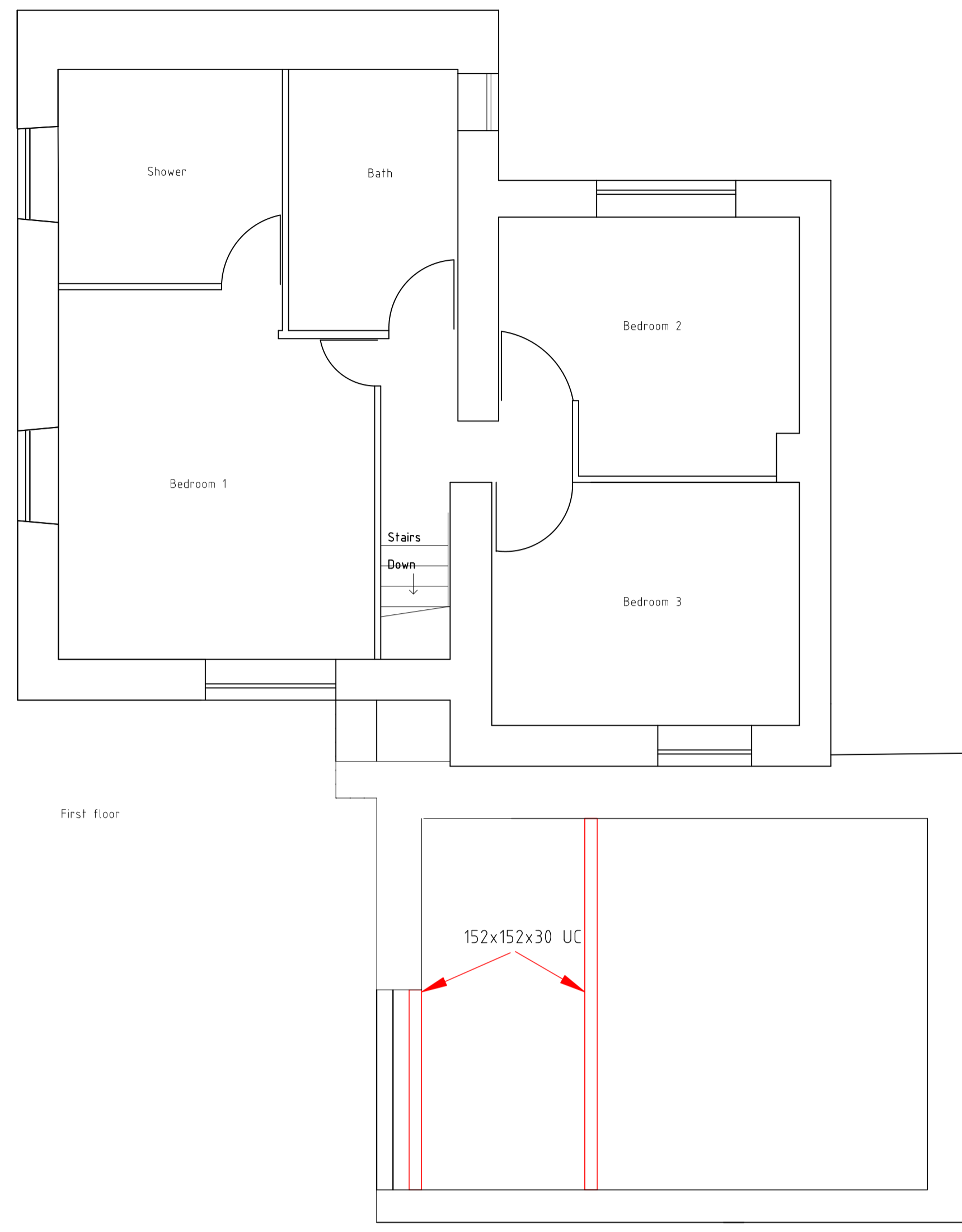
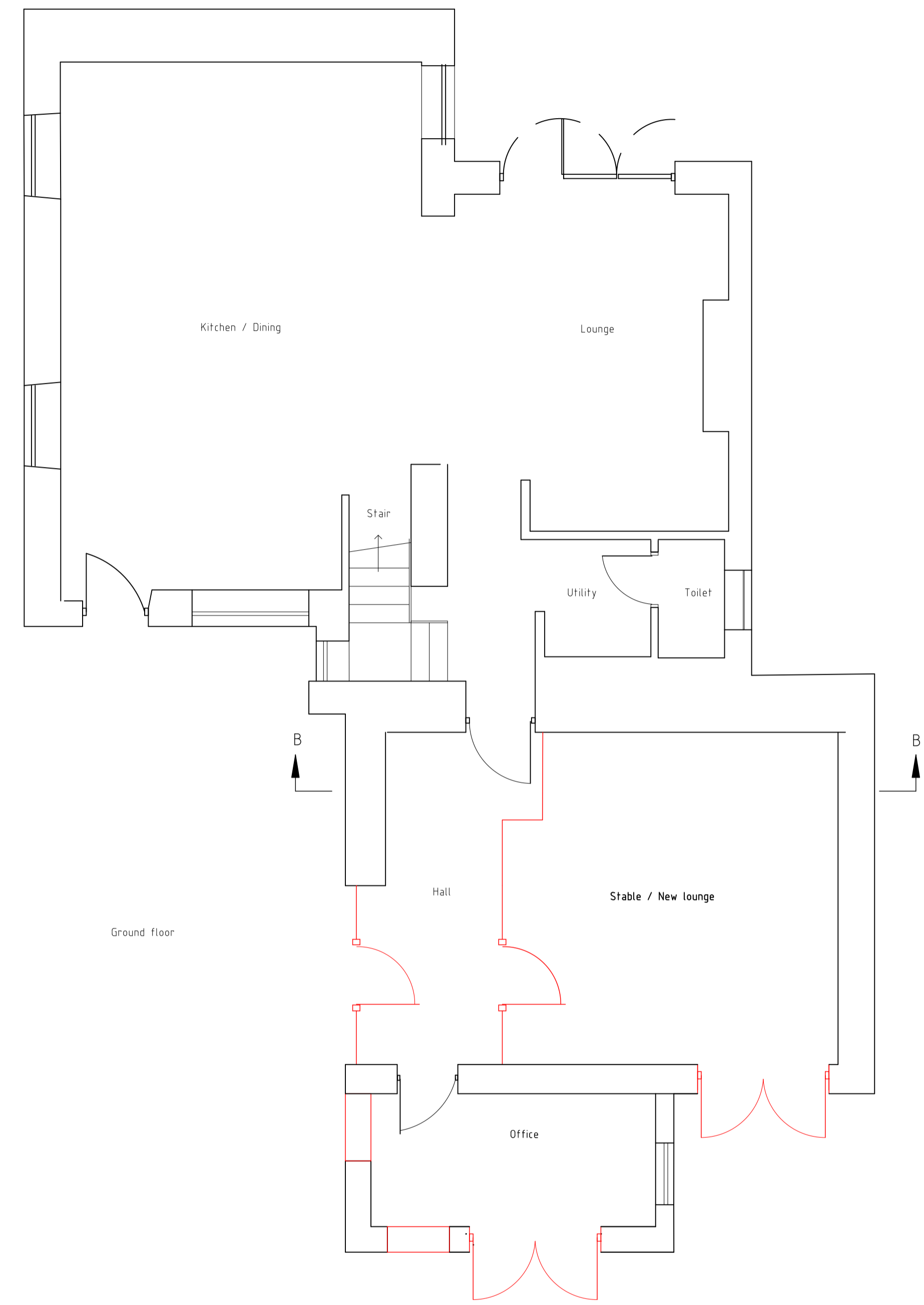


Ex Stable/garage, Study  
Floor - ex concrete floor  
remove to 300mm below ex  
main house lvl. Type 1 seal  
hardcore compacted to 50mm,  
sand blinding and compacted  
50mm. DPC min 1200 gauge  
- single sheet. Insulation rigid  
board min 100mm e.g. Celotex  
FF4100. Poly separation layer.  
Concrete overlay 65mm. Polypipe  
floating floor Overlay underfloor  
heating system 3 zone.  
Roof - Lounge and Study  
Ex slates removed and retained  
for reuse. Apply breathable  
membrane to BS5534:2014  
Cromar Vent 3 pro. 50x25 timber  
baten to BS5534:Part1:1997  
Slates refixed with copper nails  
cracked slates replaced using  
reclamation slates. Lead over  
flashing (patented) max 1500  
mm lengths. Ex rooflights  
replaced with conservation velux  
type GGLCK04. Roof underdrawn  
with PIR insulation 50mm  
between joist, maintaining 25mm  
air space. PIR 100mm over joists.  
Plasterboard and skim. ex upvc  
gutter board refixed.  
ex Stable/Garage Walls  
West wall  
DPC injection. Maintain ex  
opening. 2 course stone lintel  
and 152x152x30UC inner lintel.  
New Oak door and frame, with  
clear double glazed side pannels  
to full height. Frame recessed  
into ex opening with natural  
stone step formed full width.  
Internal steel stud 50mm PIR  
insulation.  
South wall  
DPC injection. Create new  
opening 1800x1980. 2 course  
stone lintel, jambs and step. Tie  
back to internal wall. Glazed  
double doors to opening.  
Internal steel stud 50mm PIR  
insulation.  
East wall  
DPC injection. Remove CH Boiler  
from NE corner and relocate on  
west wall.  
Prepare wall for tanking. Apply  
PermaSeal tanking slurry. Apply  
1:1.6 Lime render min 10mm.  
Internal steel stud 50mm PIR  
insulation.  
North wall  
DPC injection. Internal steel stud  
50mm PIR insulation.  
New Lounge Internal  
New steel 152x152x30UC span  
4550mm at 2175 above new  
floor. Intumescent paint 30min  
fire rating BS476-20/21. 150mm  
timber joists 450mm spacing  
laid into steel web. Inlay PIR  
insulation min 50mm between  
joists. Overlay 22mm chipboard  
floor. Underdraw plasterboard  
and skim. Steel stud partition  
(Lounge & Hall). Oak single door  
frame and engineered wood  
door to match existing.  
Ex Study / Office Walls  
South wall  
DPC injection. Remove ex  
window. Infil stone pointing mix  
1:1.6 lime mortar. Create new  
opening 1800x1980. 2 course  
stone lintel, jambs and step. Tie  
back to internal wall. Glazed  
double doors to opening.  
Internal steel stud 50mm PIR  
insulation.  
West wall  
DPC injection. Remove ex door.  
infil stone pointing mix 1:1.6  
lime mortar. Internal steel stud  
50mm PIR insulation.  
East wall  
DPC injection. Internal steel stud  
50mm PIR insulation.  
North Wall  
Remove ex plaster to expose ex  
stone. DPC injection. Remove ex  
door frame. New oak single  
frame and engineered oak door  
to match existing. Repoint stone  
1:1.6 lime mortar.



Project	West End Lodge	Drawn by	JHG
Title	West End Lodge New Lounge - Proposed layout 3/95/0306 Amendment	Date	10 May 2021
Drawing number	210308_02	Scale	50:1 Plot A1
		Author	A