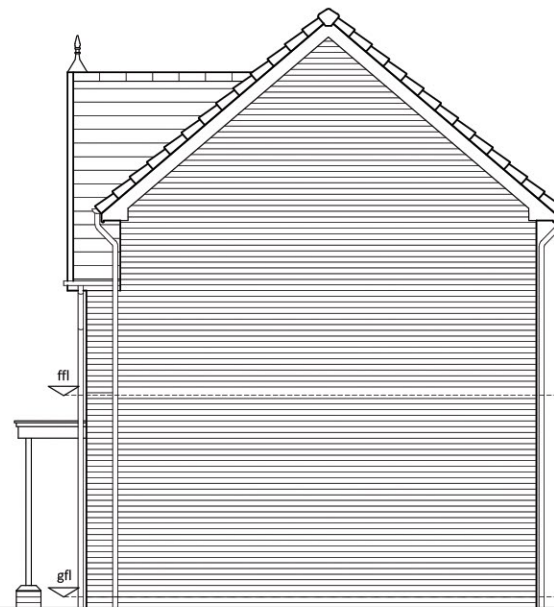




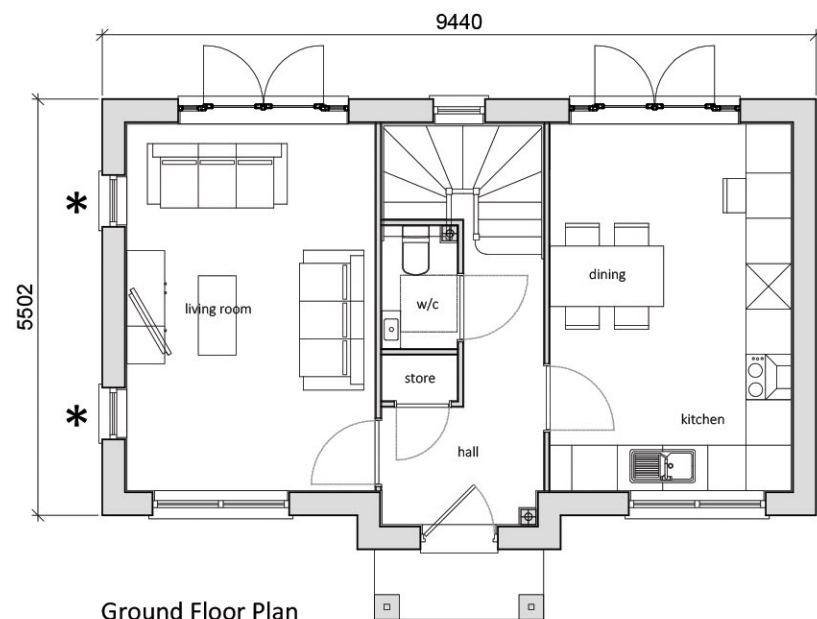
Front Elevation



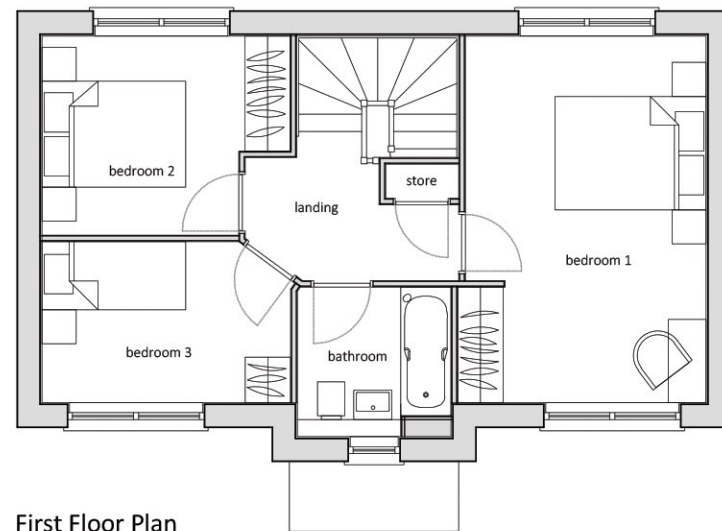
Side Elevation - Right



Rear Elevation



Ground Floor Plan

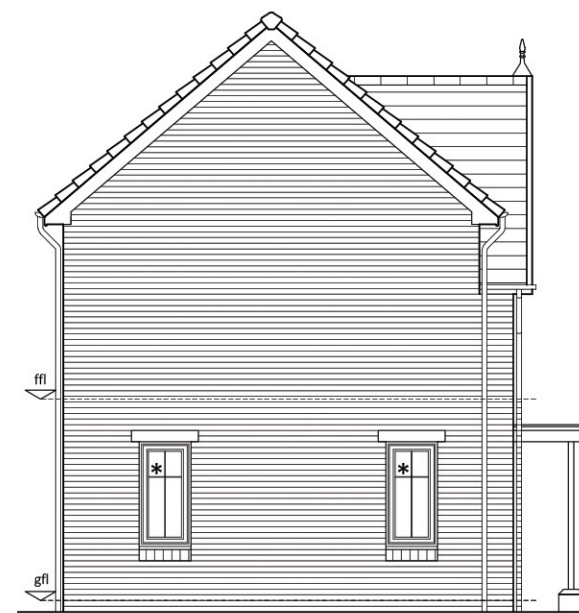
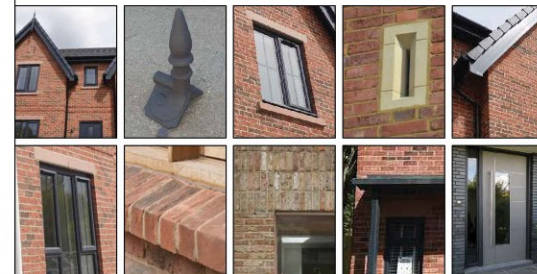


First Floor Plan

Materials

1. Tile ridge finial detail - Grey
2. Thin leading edge roof tile - Grey
3. Artstone - Red
4. Deep barge boards - Grey
5. UPVC windows - Grey
6. Red Multi facing brick to LA approval
7. Brick window sill
8. Brick on edge soldier course
9. Powder coated metal porch - Grey
10. Composite front door - Grey
11. Low brick pier with angled special

* **Notes:** Brick window sill and artstone window head & additional ground floor windows to be included on exposed side elevations only - Plot 33.



Side Elevation - Left

Note - House type square footage taken to plaster finish.

Type H1 - 3B5P Detached (87 sqm / 936 sqft)

Open Sale - Floor Plans & Elevations - DWG: 20126_HT_07_A - Scale 1:100 @ A3, Date - April 2021

1:100

