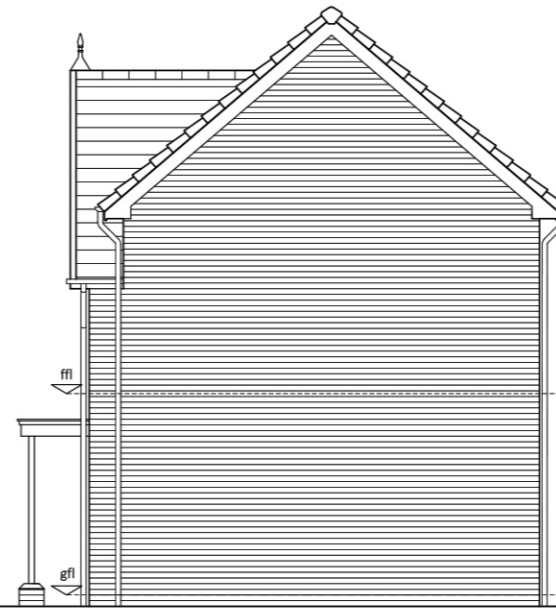




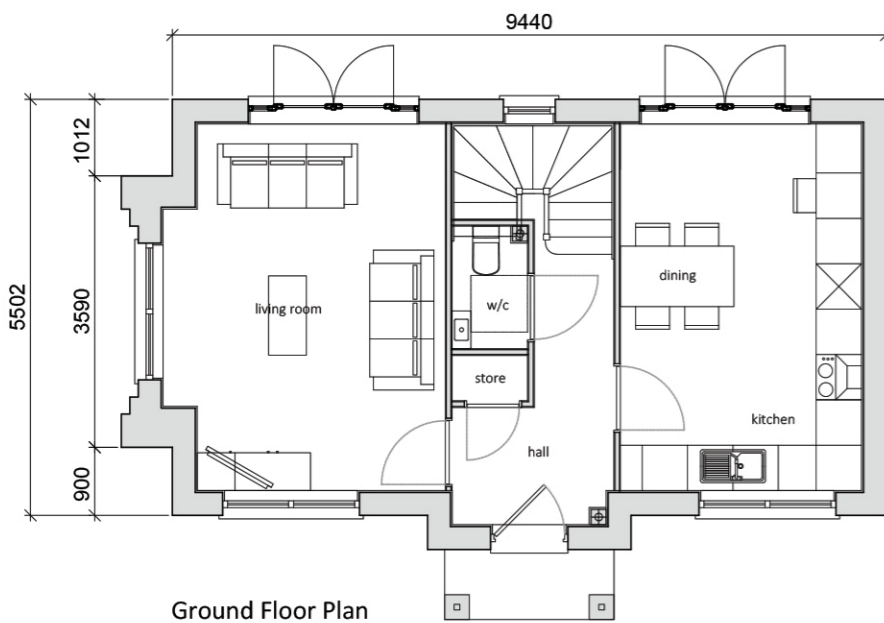
Front Elevation



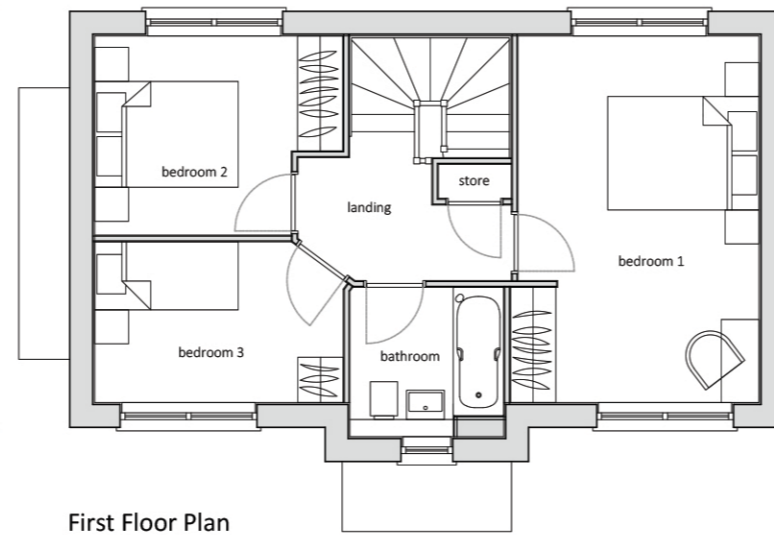
Side Elevation - Right



Rear Elevation



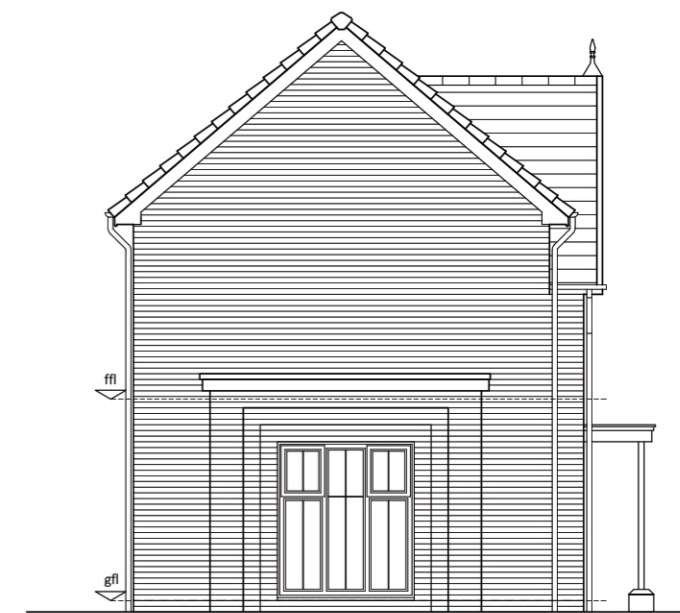
Ground Floor Plan



First Floor Plan

Materials

1. Tile ridge finial detail - Grey
2. Thin leading edge roof tile - Grey
3. Artstone - Red
4. Deep barge boards - Grey
5. UPVC windows - Grey
6. Red Multi facing brick to LA approval
7. Brick window sill
8. Brick on edge soldier course
9. Powder coated metal porch - Grey
10. Composite front door - Grey
11. Low brick pier with angled special



Side Elevation - Left

Note - House type square footage taken to plaster finish.

Type H2 - 3B5P Detached (88.2 sqm / 949 sqft)

Open Sale - Floor Plans & Elevations - DWG: 20126_HT_08_A - Scale 1:100 @ A3, Date - April 2021

1:100

