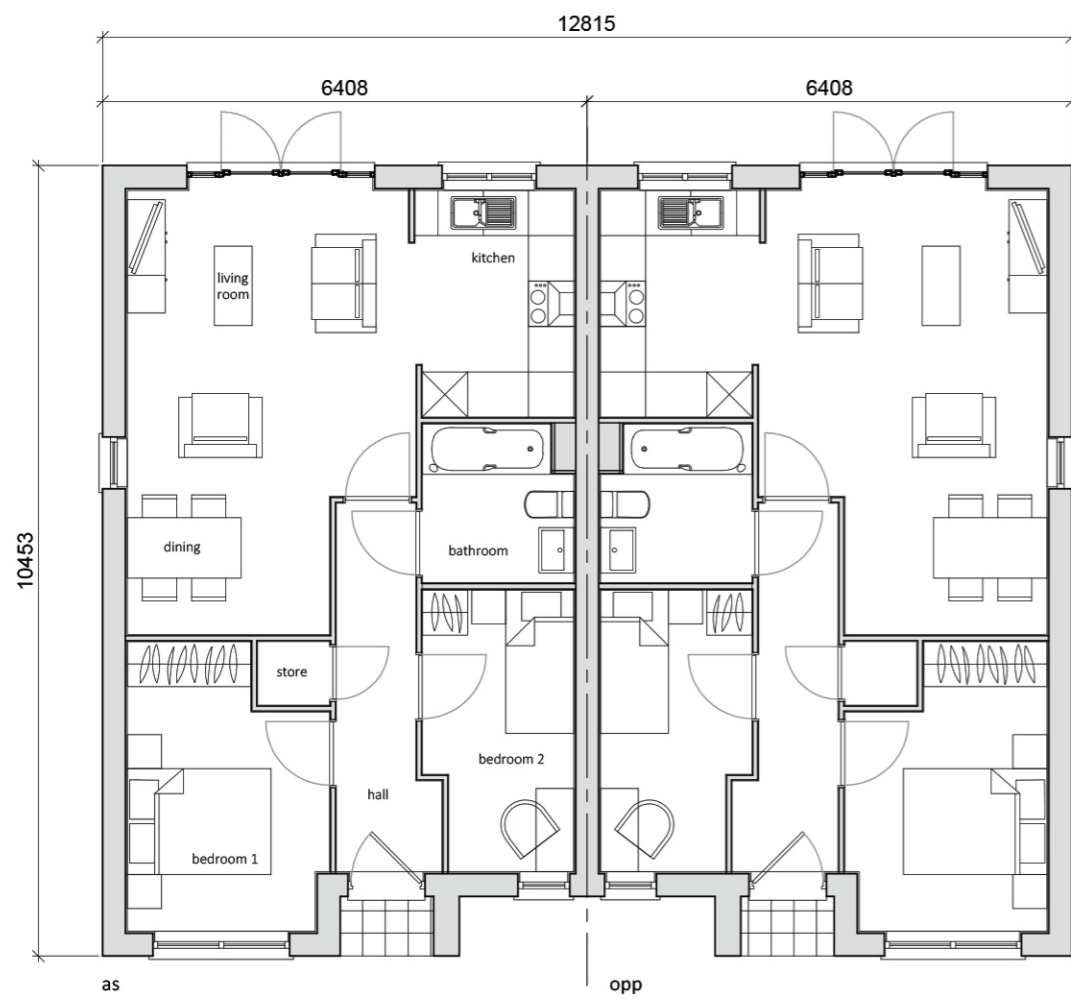




Front Elevation



Rear Elevation

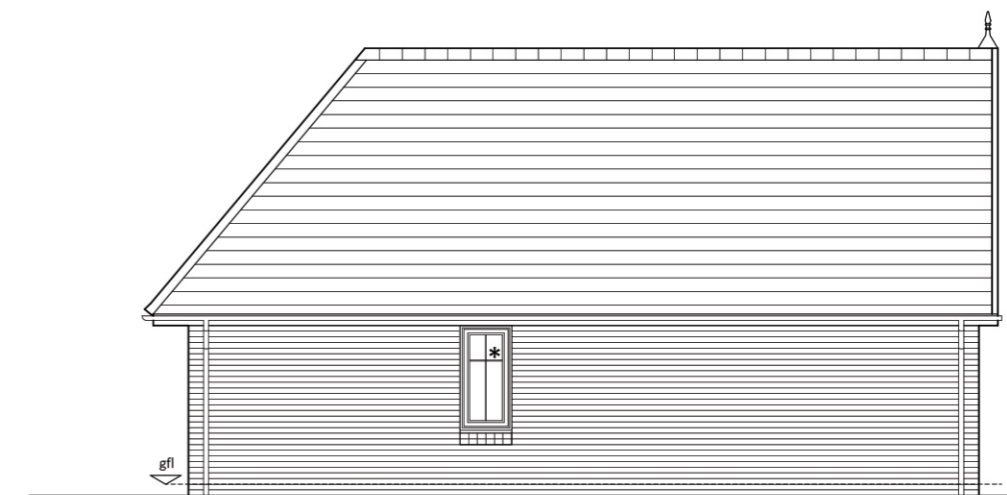


Ground Floor Plan

Materials

1. Tile finial detail - Grey
2. Thin leading edge roof tile - Grey
3. Deep barge boards - Grey
4. Artstone key stone - Red
5. Artstone - Red
6. UPVC windows - Grey
7. Red Multi facing brick to LA approval
8. Recessed porch
9. Brick window sill
10. Composite front door - Grey

* **Notes:** Brick window sill and artstone window head to be included on exposed side elevation only - Plots 03 & 115.



Side Elevation

Note - House type square footage taken to plaster finish.

Type A - 2B3P Semi-Det / Det. Bungalow (55.2 sqm / 594 sqft)

Shared Ownership / Affordable Rent - Floor Plans & Elevations - DWG: 20126_HT_01 - Scale 1:100 @ A3, Date - April 2021

1:100



www.mpsl.co.uk