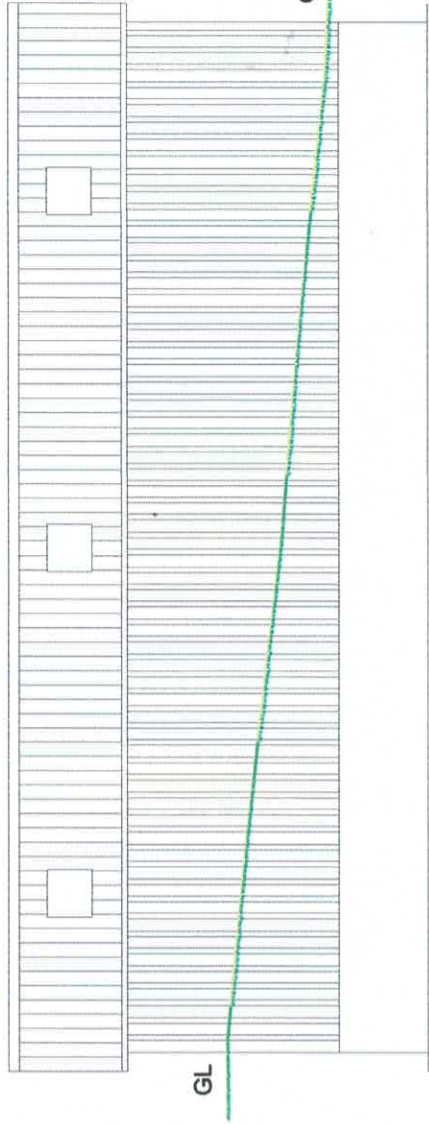


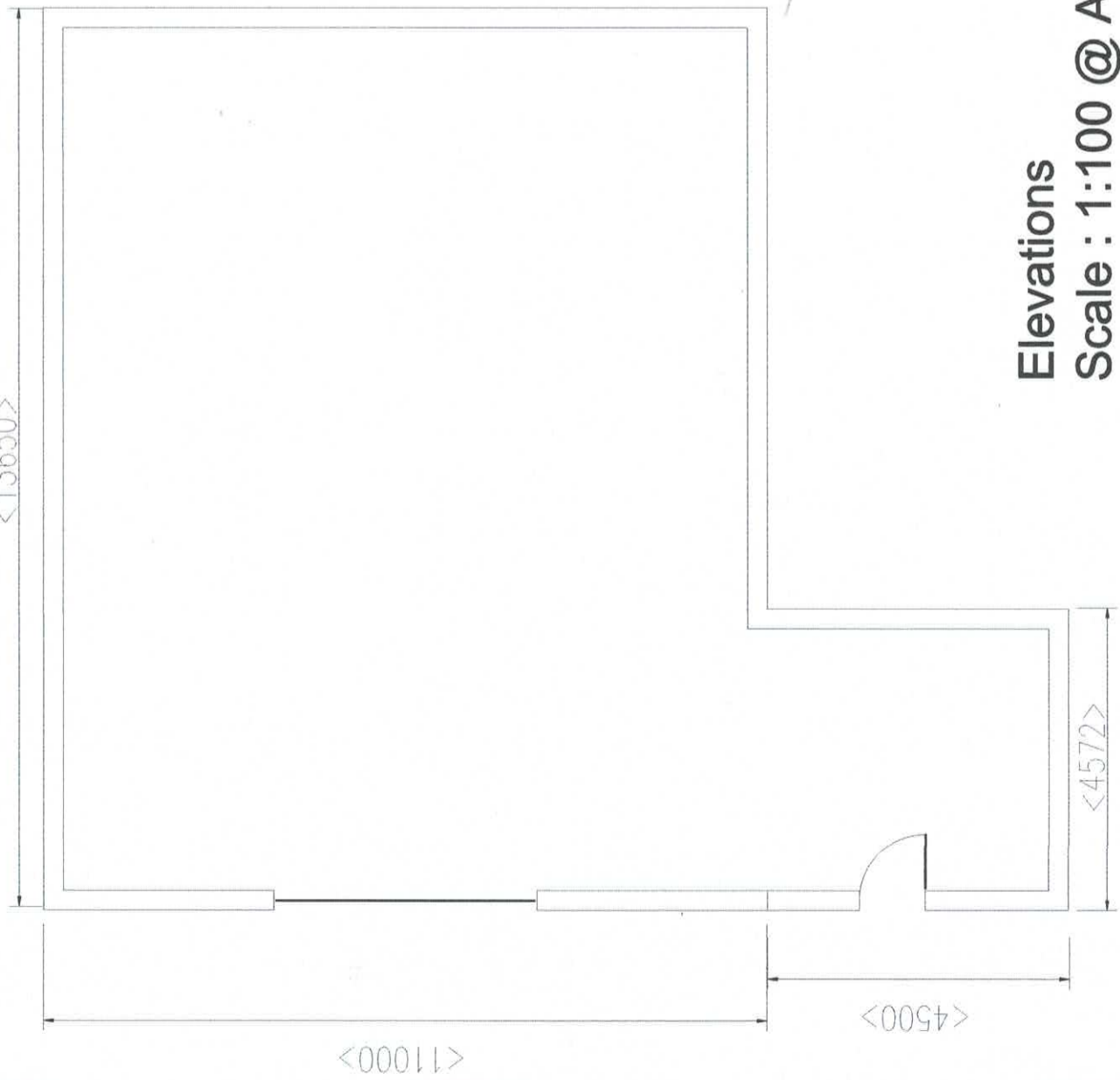
North Elevation

<13650>



South Elevation

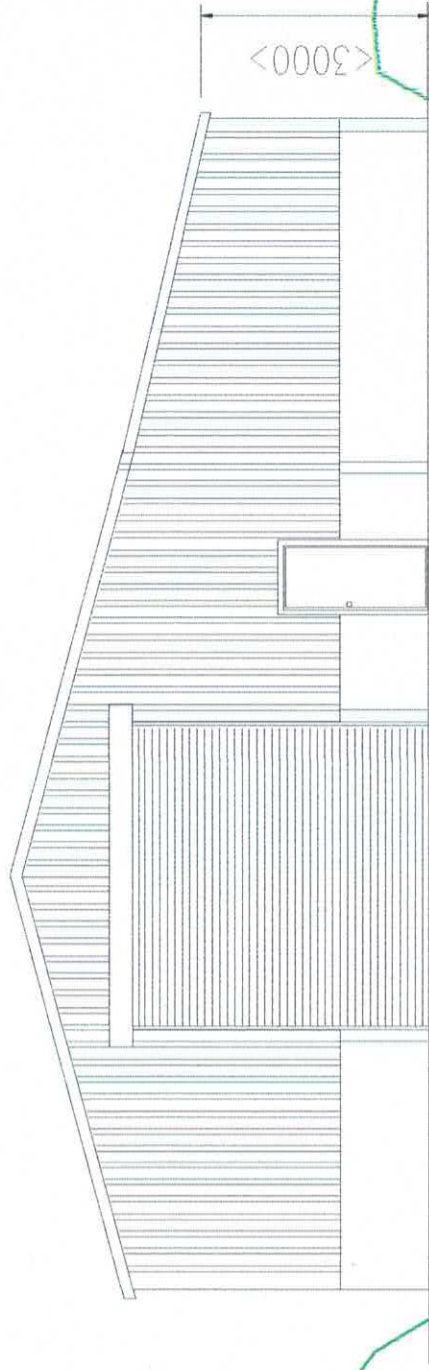
<3000>



<11000>

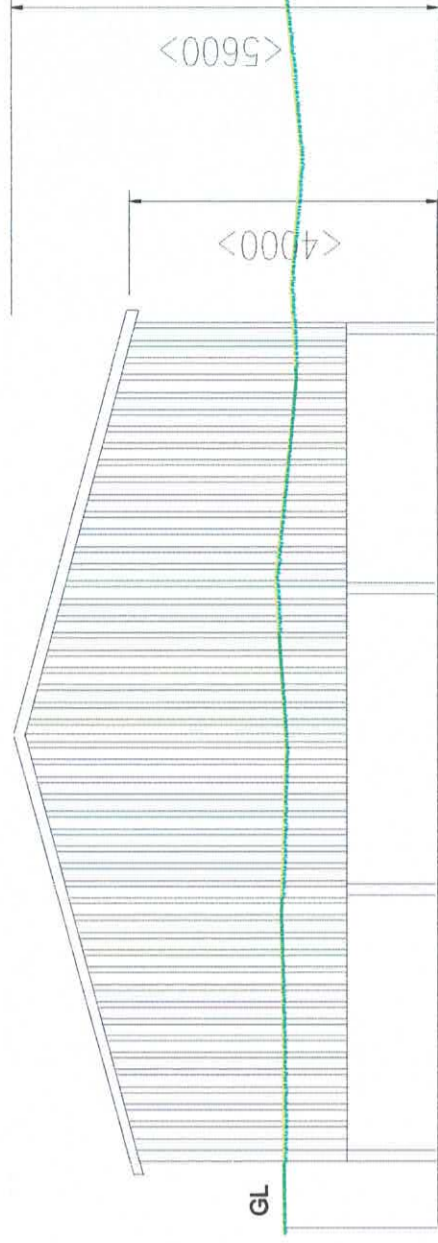
<4500>

<4572>



East Elevation

<5600>



West Elevation

<4000>

Materials:

Walls - Pre-cast concrete panels to 1200mm

- Steel Profile sheets above - Forest green

Roof - Eternit Farmscape Fibre Cement - Anthracite grey

Doors - Steel roller shutter

Personnel Door - Upvc

Elevations
Scale : 1:100 @ A3