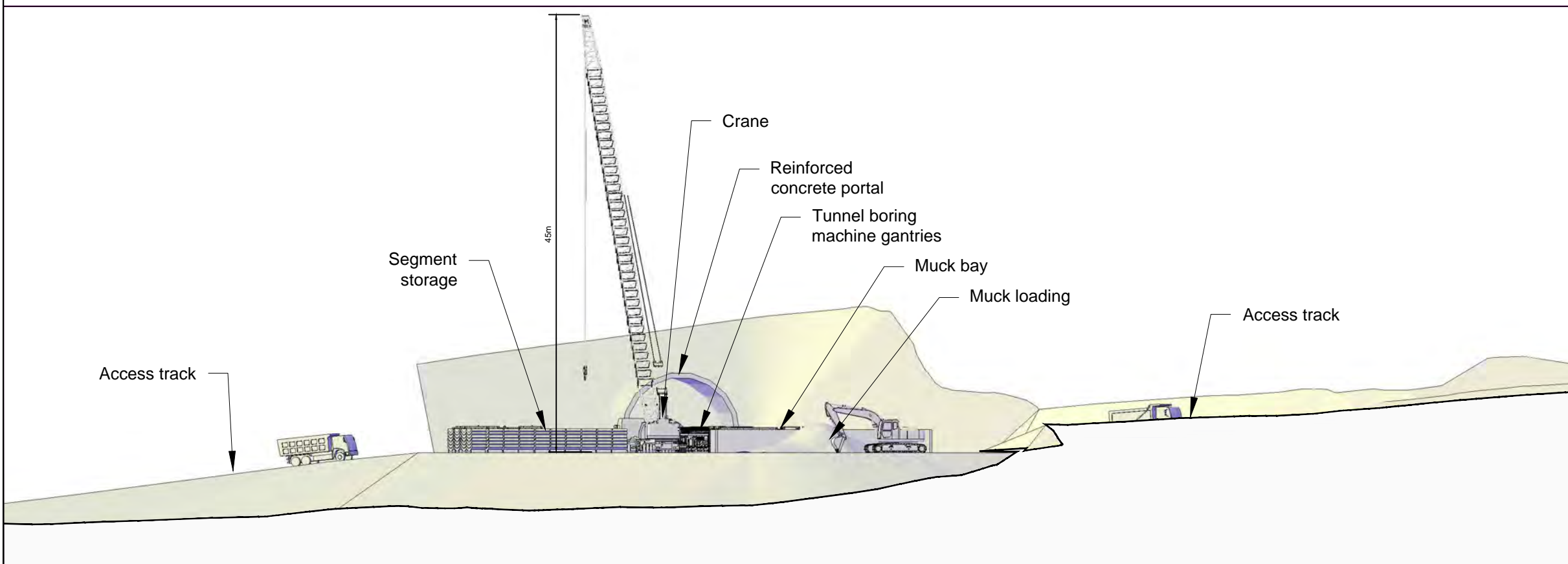


ELEVATION A-A - APPROX 1:500@A3



ELEVATION B-B - APPROX 1:500@A3

Notes

Elevation details shown reflect temporary compound and construction activities.

Indicative elevations with the hoarding and fencing removed to allow a view of the compound.

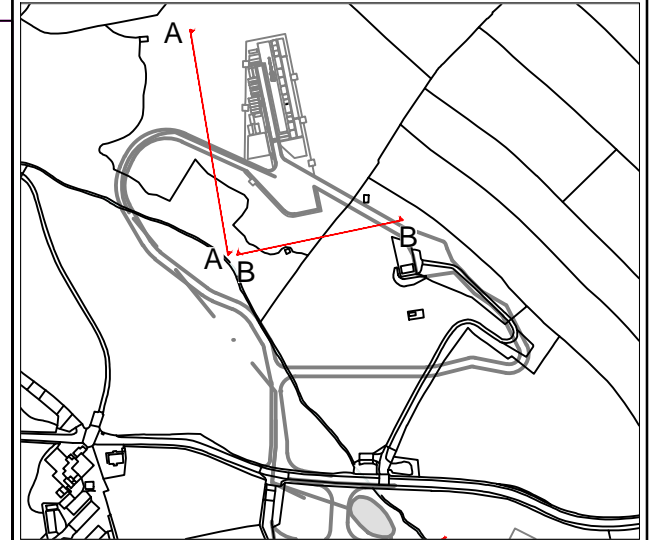
For detailed dimensions refer to drawing RVBC-BO-APP-004-07 - Cross Sections Newton in Bowland Compound

For Construction Compound Details refer to drawing RVBC-BO-APP-004-05_01-02 - PROPOSED LOWER HOUSES COMPOUND - CONSTRUCTION PHASE DRAWING

Refer to the Environmental Masterplan within the Environmental Statement [Figure LCC_RVBC-BO-FIG-020-001], for environmental protection and mitigation measures and any proposed temporary closures and/or diversions to PRoW.

COSHH - Control of Substances Hazardous to Health

TO BE REPRODUCED IN COLOUR ONLY



0	RL	JP	AS	FINAL ISSUE	MAY 2021
VERSION	AUTH	CHKD	REVD	REASON FOR ISSUE	DATE



UNITED UTILITIES WATER LIMITED
 HAWESWATER AQUEDUCT RESILIENCE PROGRAMME
 RIBBLE VALLEY BOROUGH COUNCIL (BOWLAND)
 COMPOUND ELEVATIONS - NEWTON IN BOWLAND COMPOUND
 SHEET 1 OF 2

SCALE AS SHOWN	SHEET SIZE A3
DRAWING NUMBER RVBC-BO-APP-004-09_01	REVISION 0

The copyright of this document, which contains information of a proprietary nature, is vested in United Utilities Water Limited. The content of this document may not be used for purposes other than that for which it has been supplied and may not be reproduced, either wholly or in part, in any way whatsoever. It may not be used by, or its contents divulged to any other person whatsoever without the prior written permission of United Utilities Water Limited.
 Copyright Acknowledgement: Use of Ordnance Survey map data sanctioned by the controller of H.M. Stationery Office. OS Licence Number 100019326. Crown copyright reserved. Unauthorised production infringes copyright.