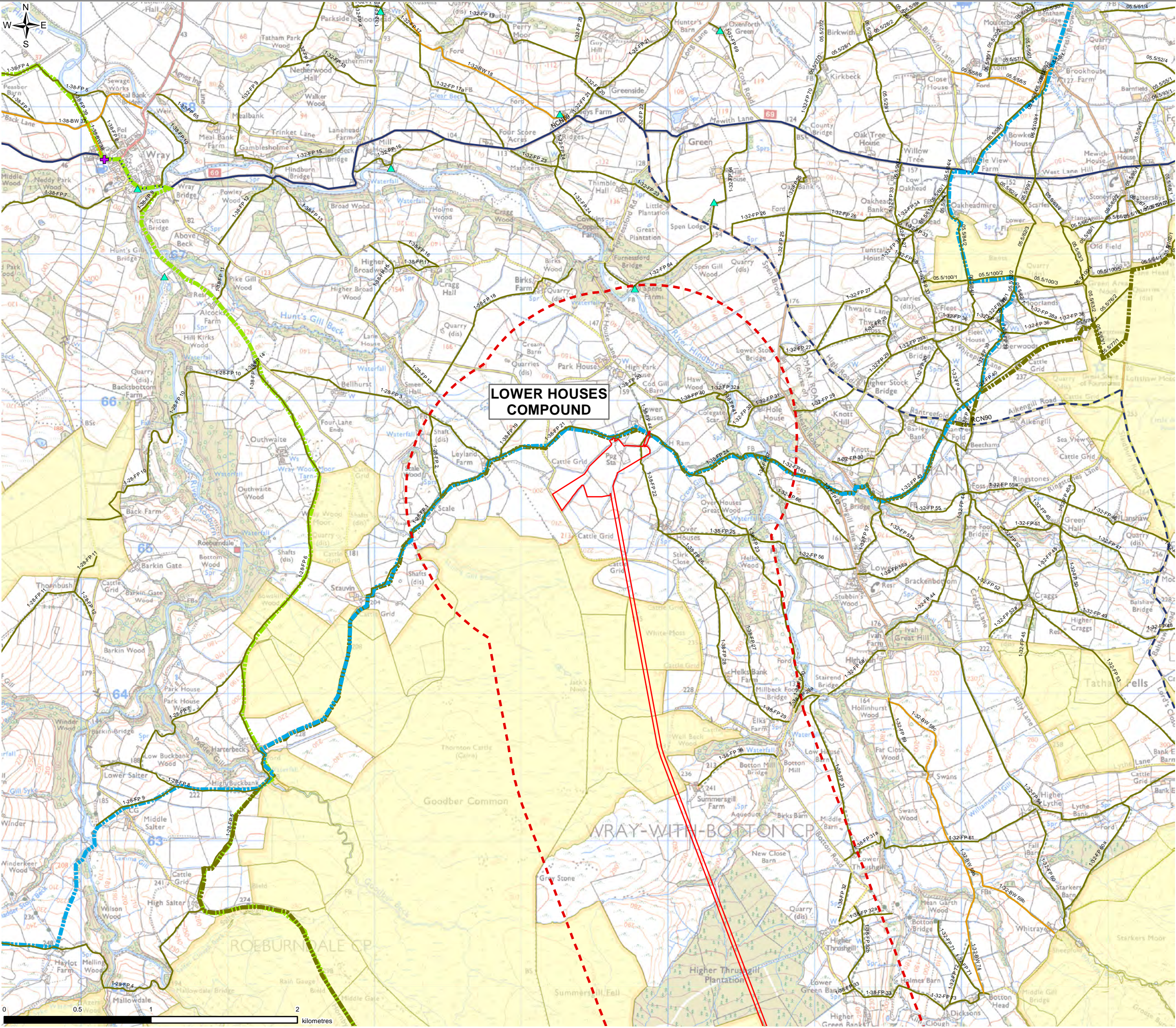
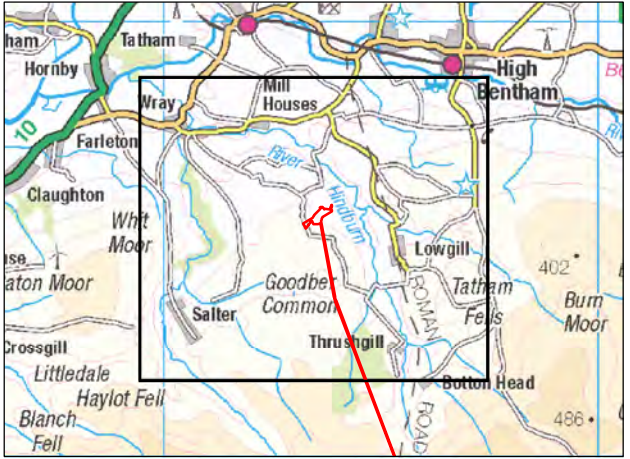


FIGURE 13.1



**Legend**

- Planning Application Boundary
- 1km Assessment Area
- Recreational Facilities**
  - Holiday Let/Accommodation/Short-Term Let
  - Place Of Worship
  - CRoW Act 2000 Access Layer
- Long Distance Paths**
  - Joining The Seas
  - North Bowland Traverse
  - Tops of the North
- Public Rights of Way**
  - Bridleway
  - Footpath
- National Cycle Network**
  - On Road
  - On Road (Reclassified)



0	SP	TA	LH	Initial Issue	17/05/2021
VERSION	AUTH	CHKD	REVD	REASON FOR ISSUE	DATE



UNITED UTILITIES WATER LIMITED  
HAWESWATER AQUEDUCT RESILIENCE PROGRAMME  
PUBLIC ACCESS AND RECREATION BASELINE  
PAGE 1 OF 3

SCALE 1:25,000	SHEET SIZE A3
DRAWING NUMBER LCC_RVBC-BO-FIG-013-001	REVISION 0

The copyright of this document, which contains information of a proprietary nature, is vested in United Utilities Water Limited. The content of this document may not be used for purposes other than that for which it has been supplied and may not be reproduced, either wholly or in part, in any way whatsoever. It may not be used by, or its contents divulged to any other person whatsoever without the prior written permission of United Utilities Water Limited. Copyright Acknowledgement: Use of Ordnance Survey map data sanctioned by the controller of H.M. Stationery Office. OS Licence Number 100019326. Crown copyright reserved. Unauthorised production infringes copyright. © Crown copyright and database rights 2020 Ordnance Survey 0100031673. Contains OS data © Crown copyright and database right 2020.



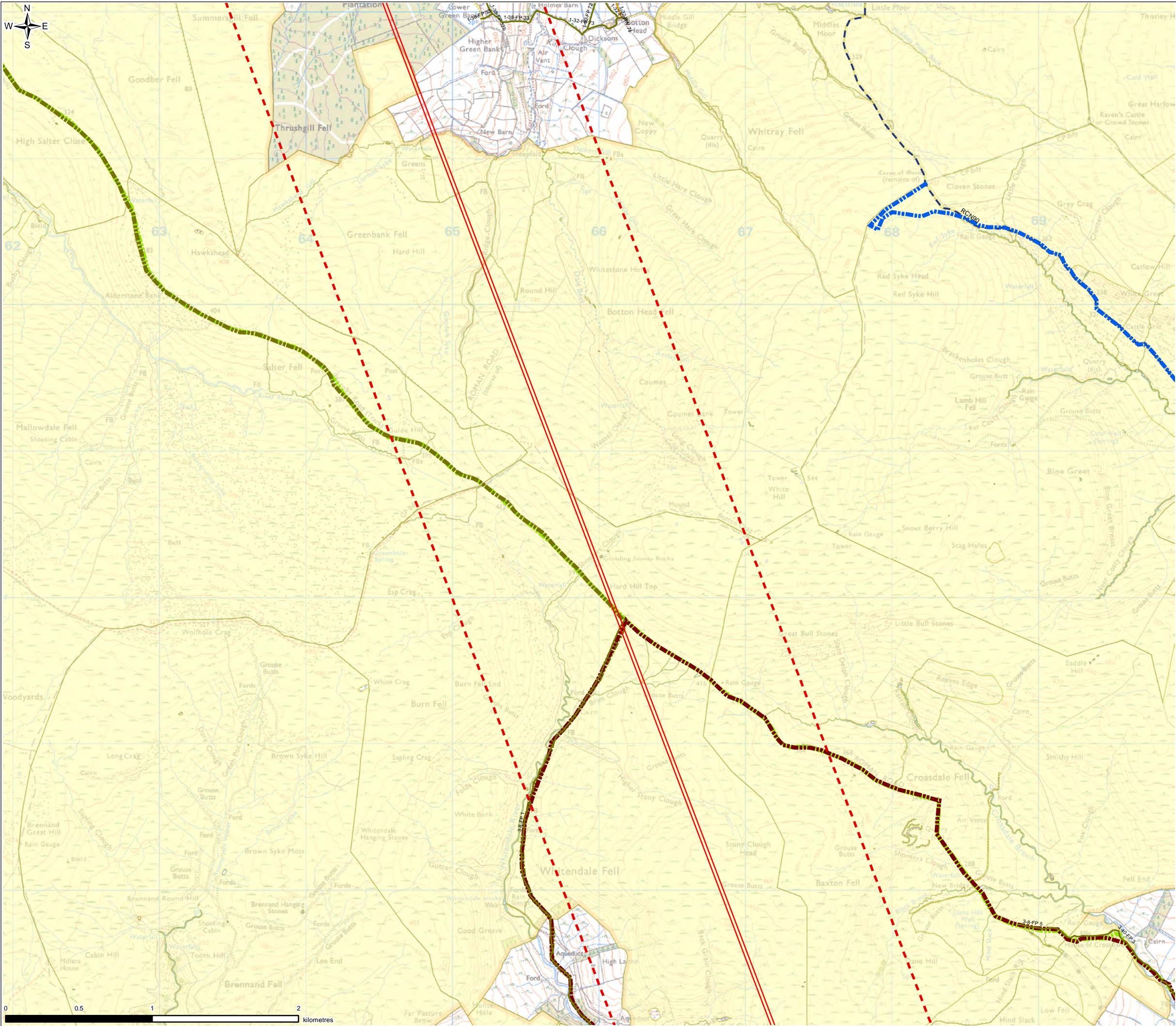


FIGURE 13.1

Legend

- Planning Application Boundary
- 1km Assessment Area
- CRoW Act 2000 Access Layer
- Long Distance Paths
  - Hodder Way
  - Lancashire Way Central Loop
  - North Bowland Traverse
  - Tops of the North
- Public Rights of Way
  - Bridleway
  - Footpath
- National Cycle Network
  - On Road (Reclassified)

0	SP	TA	LH	Initial Issue	17/05/2021
VERSION	AUTH	CHRD	REVD	REASON FOR ISSUE	DATE

Water for the North West

UNITED UTILITIES WATER LIMITED  
HAWESWATER AQUEDUCT RESILIENCE PROGRAMME  
PUBLIC ACCESS AND RECREATION BASELINE  
PAGE 2 OF 3

SCALE 1:25,000	SHEET SIZE A3
DRAWING NUMBER LCC_RVBC-BO-FIG-013-001	REVISION 0



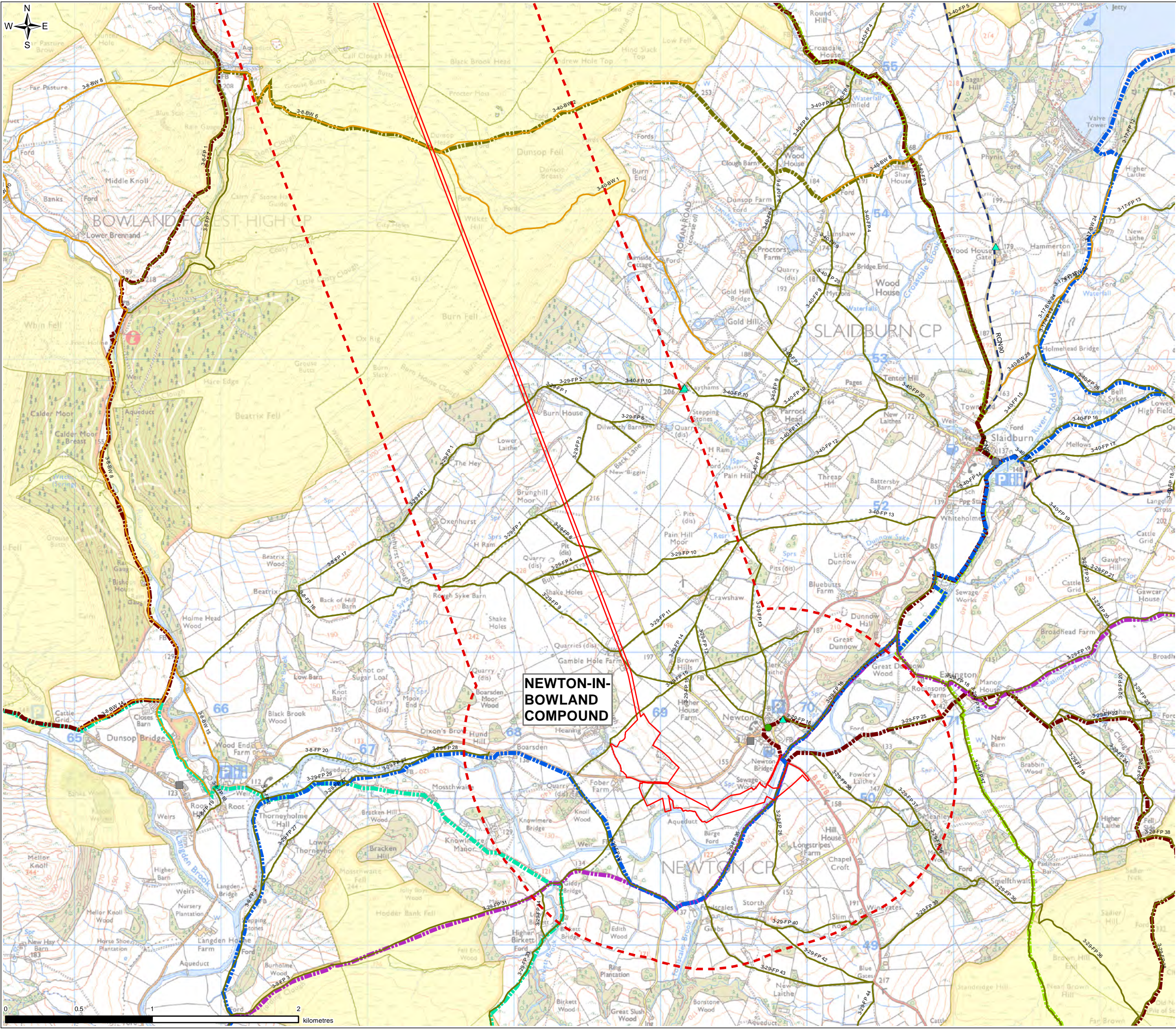
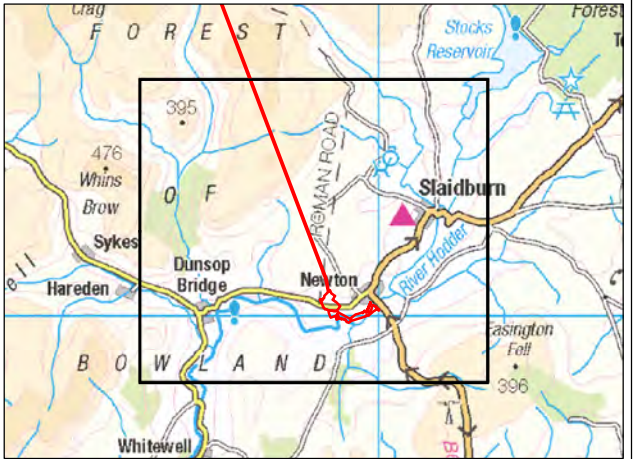



FIGURE 13.1

- Legend
- Planning Application Boundary
  - 1km Assessment Area
  - Recreational Facilities
    - Public / Village Hall / Other Community Facility
    - Holiday Let/Accommodation/Short-Term Let
    - Equestrian
    - CRoW Act 2000 Access Layer
  - Long Distance Paths
    - Clitheroe 60k
    - Hodder Way
    - Lancashire Way Central Loop
    - North Bowland Traverse
    - Pendle Witches Way
    - Tops of the North
  - Public Rights of Way
    - Bridleway
    - Footpath
  - National Cycle Network
    - On Road (Reclassified)



0	SP	TA	LH	Initial Issue	17/05/2021
VERSION	AUTH	CHKD	REVD	REASON FOR ISSUE	DATE
<div> Water for the North West</div>					
UNITED UTILITIES WATER LIMITED HAWESWATER AQUEDUCT RESILIENCE PROGRAMME PUBLIC ACCESS AND RECREATION BASELINE PAGE 3 OF 3					
SCALE 1:25,000					SHEET SIZE A3
DRAWING NUMBER LCC_RVBC-BO-FIG-013-001					REVISION 0