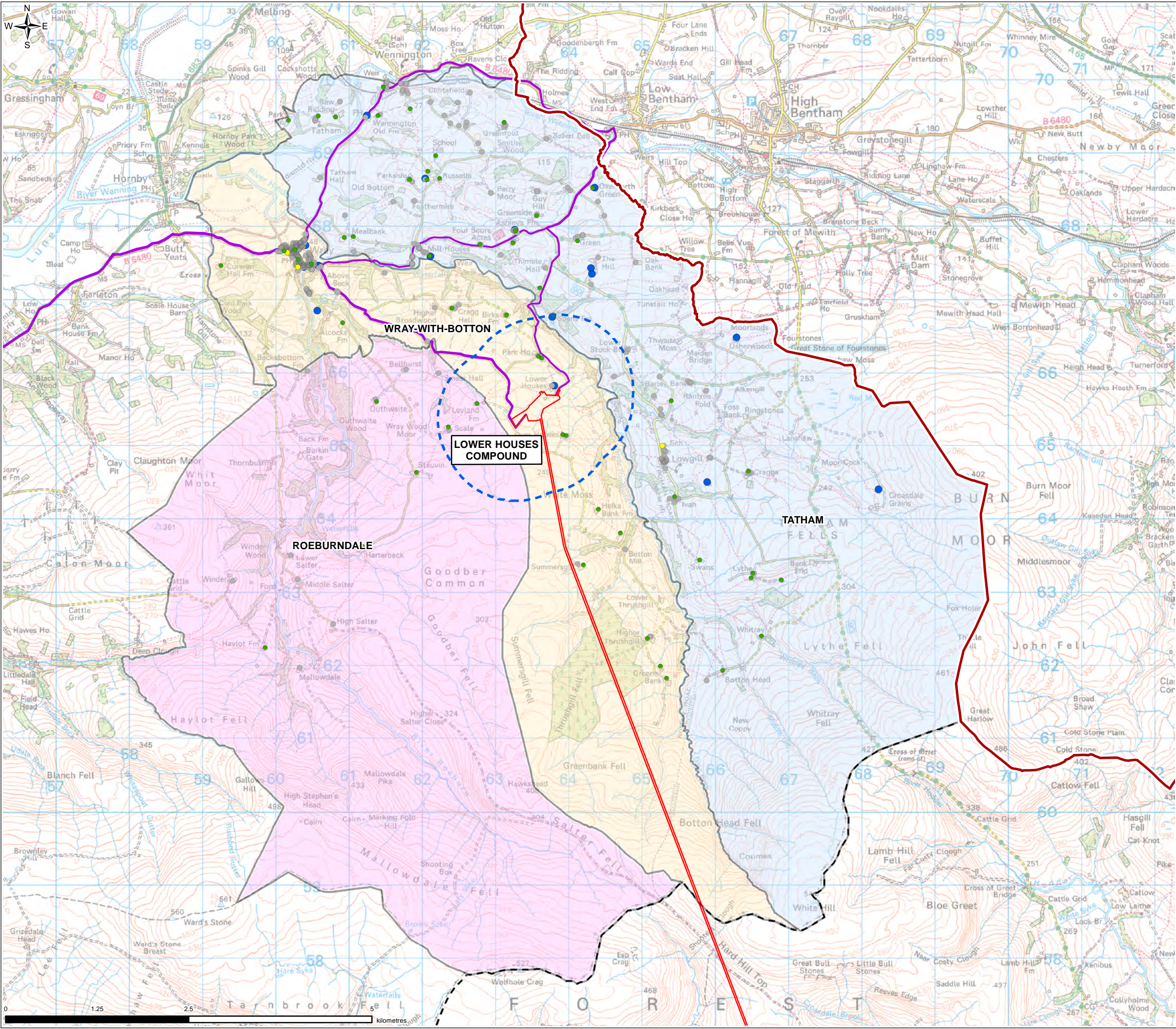


FIGURE 14.3



Legend

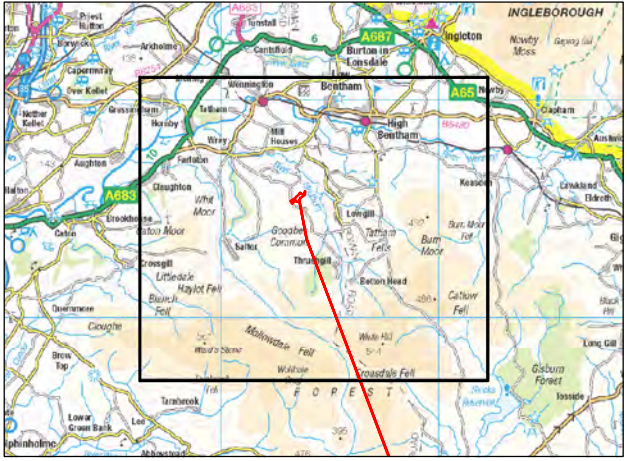
- Planning Application Boundary
- Regional Community Assessment Area (RCAA) Boundary
- Local Community Assessment Area (LCAA) Boundary
- Construction Traffic Route
- Planning Authority Boundary

Community Area

- Roeburndale
- Tatham
- Wray-with-Botton

Community Receptors

- Agricultural Activities
- Commercial Operations
- Residential
- Social Infrastructure



0	SP	TE	BK	Initial Issue	18/05/2021
VERSION	AUTH	CHRD	REVD	REASON FOR ISSUE	DATE

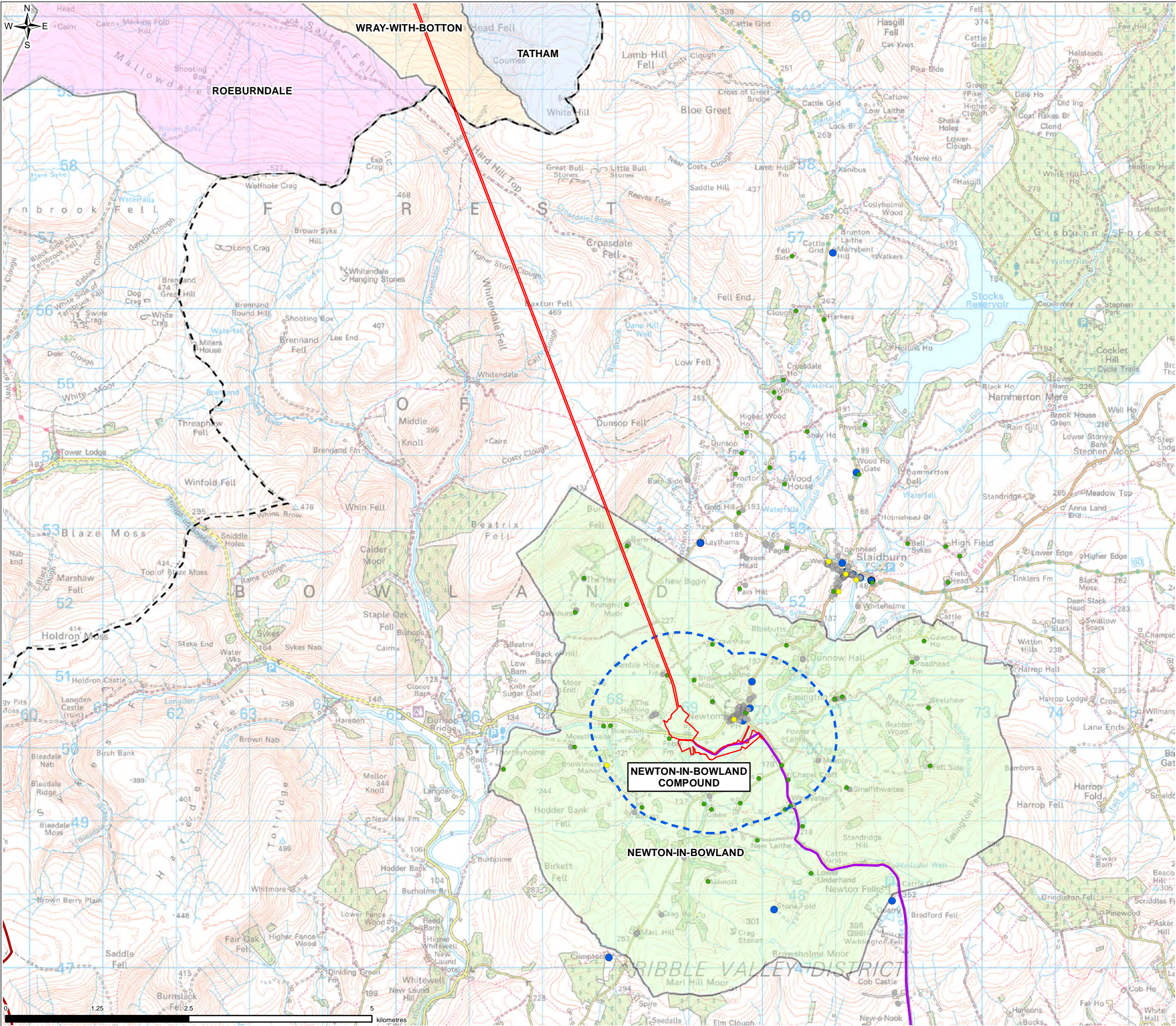
United Utilities
Water for the North West

UNITED UTILITIES WATER LIMITED
HAWESWATER AQUEDUCT RESILIENCE PROGRAMME
COMMUNITY AND HEALTH RECEPTORS
PAGE 1 OF 9

SCALE 1:50,000	SHEET SIZE A3
DRAWING NUMBER LCC_RVBC-BO-FIG-014-003	REVISION 0

The copyright of this document, which contains information of a proprietary nature, is vested in United Utilities Water Limited. The content of this document may not be used for purposes other than that for which it has been supplied and may not be reproduced, either wholly or in part, in any way whatsoever. It may not be used by, or its contents divulged to any other person whatsoever without the prior written permission of United Utilities Water Limited. Copyright Acknowledgement: Use of Ordnance Survey map data sanctioned by the controller of H.M. Stationery Office. OS Licence Number 100019326. Crown copyright reserved. Unauthorised production infringes copyright. © Crown copyright and database rights 2020 Ordnance Survey 0100031673. Contains OS data © Crown copyright and database right 2020.

FIGURE 14.3



Legend

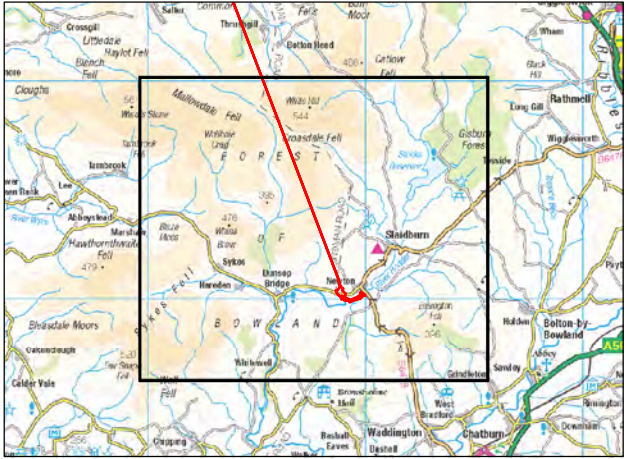
- Planning Application Boundary
- Regional Community Assessment Area (RCAA) Boundary
- Local Community Assessment Area (LCAA) Boundary
- Construction Traffic Route
- Planning Authority Boundary

Community Area

- Newton-in-Bowland
- Roeburndale
- Tatham
- Wray-with-Botton

Community Receptors

- Agricultural Activities
- Commercial Operations
- Residential
- Social Infrastructure



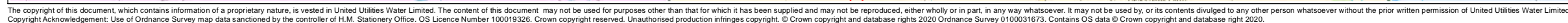
0	SP	TE	BK	Initial Issue	18/05/2021
VERSION	AUTH	CHKD	REVD	REASON FOR ISSUE	DATE




UNITED UTILITIES WATER LIMITED
HAWESWATER AQUEDUCT RESILIENCE PROGRAMME
COMMUNITY AND HEALTH RECEPTORS
PAGE 2 OF 9

SCALE 1:50,000	SHEET SIZE A3
DRAWING NUMBER LCC_RVBC-BO-FIG-014-003	REVISION 0

The copyright of this document, which contains information of a proprietary nature, is vested in United Utilities Water Limited. The content of this document may not be used for purposes other than that for which it has been supplied and may not be reproduced, either wholly or in part, in any way whatsoever. It may not be used by, or its contents divulged to any other person whatsoever without the prior written permission of United Utilities Water Limited. Copyright Acknowledgement: Use of Ordnance Survey map data sanctioned by the controller of H.M. Stationery Office. OS Licence Number 100019326. Crown copyright reserved. Unauthorised production infringes copyright. © Crown copyright and database rights 2020 Ordnance Survey 0100031673. Contains OS data © Crown copyright and database right 2020.



 Planning Application Boundary

Local Community Assessment Area (LCAA)

— Construction Traffic Route

 Roeburndale

☐ Tatham

Wray-with-Botton

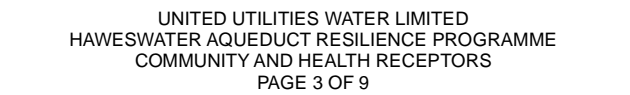
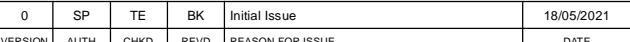
Community Receptors

- Agricultural Activities

- Commercial Operations

- Residential

- Social Infrastructure



SCALE	SHEET SIZE
1:10,000	A3

1:10,000	A3
DRAWING NUMBER	REVISION

A3
REVISION

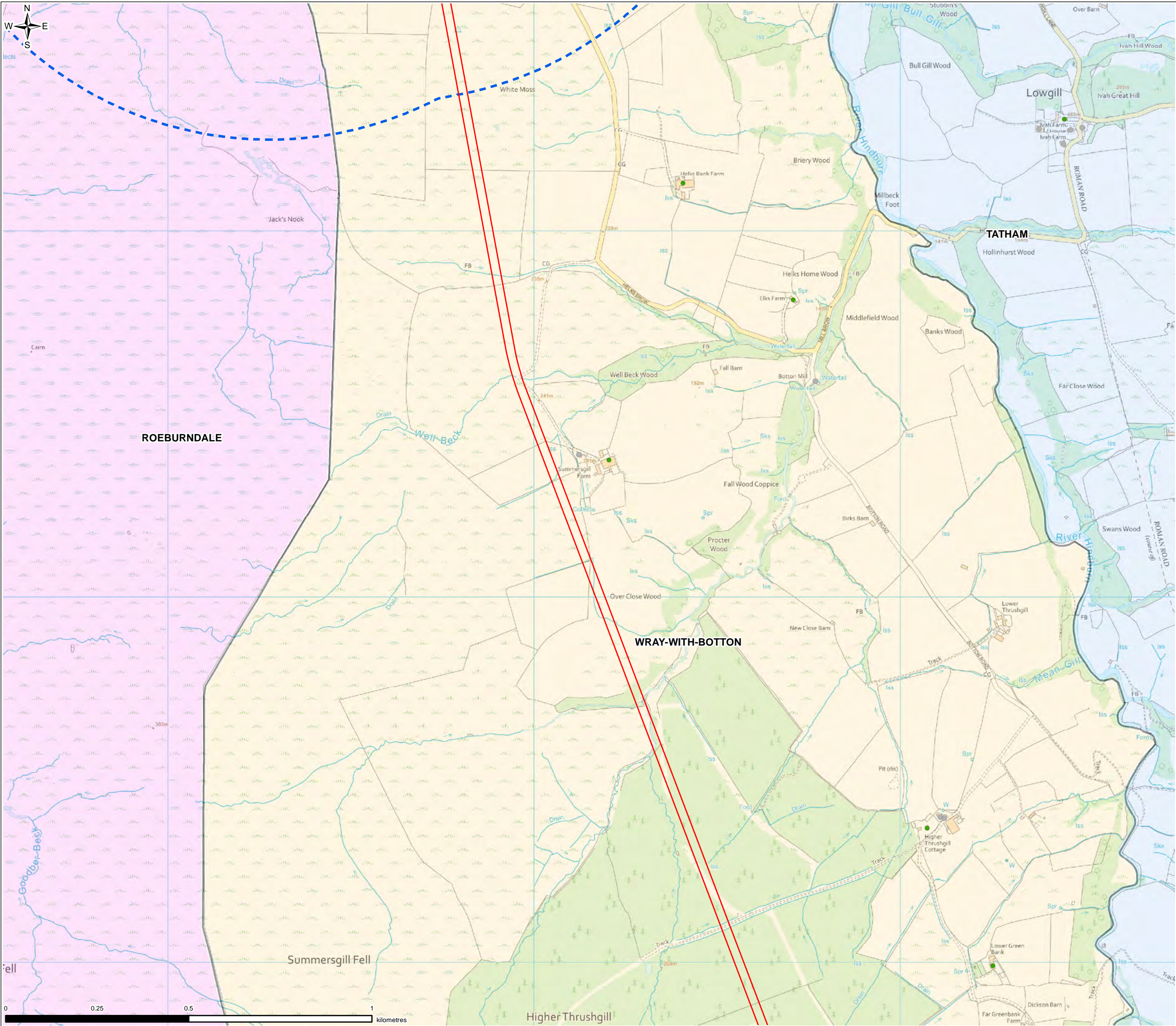
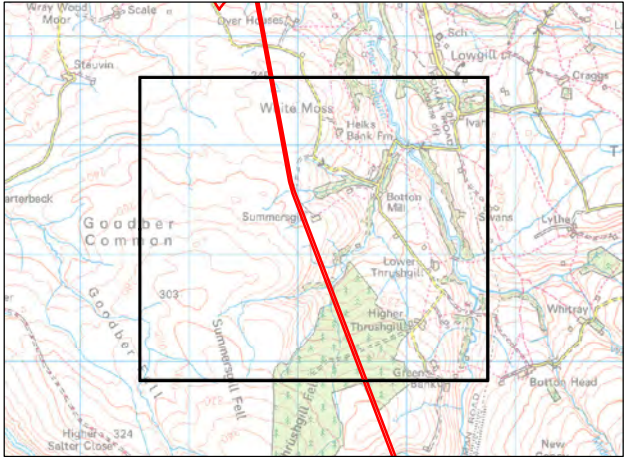


FIGURE 14.3

- Legend**
- Planning Application Boundary
 - Local Community Assessment Area (LCAA) Boundary
 - Community Area**
 - Roeburndale
 - Tatham
 - Wray-with-Botton
 - Community Receptors**
 - Agricultural Activities
 - Residential



0	SP	TE	BK	Initial Issue	18/05/2021
VERSION	AUTH	CHKD	REVD	REASON FOR ISSUE	DATE



UNITED UTILITIES WATER LIMITED
HAWESWATER AQUEDUCT RESILIENCE PROGRAMME
COMMUNITY AND HEALTH RECEPTORS
PAGE 4 OF 9

SCALE 1:10,000	SHEET SIZE A3
DRAWING NUMBER LCC_RVBC-BO-FIG-014-003	REVISION 0

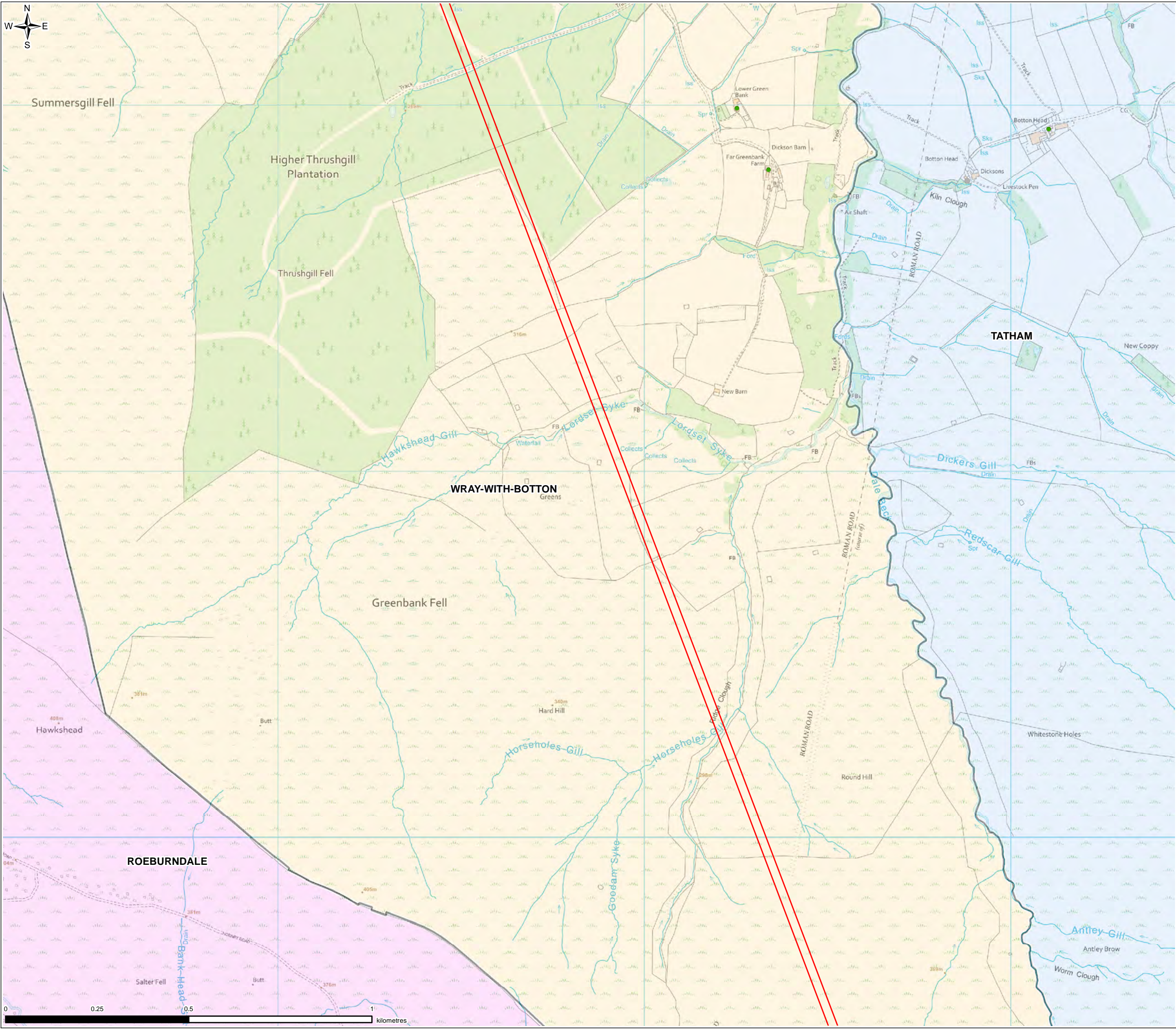


FIGURE 14.3

Legend

Planning Application Boundary

Community Area

Roeburndale

Tatham

Wray-with-Botton

Community Receptors

Agricultural Activities

Residential

0	SP	TE	BK	Initial Issue	18/05/2021
VERSION	AUTH	CHKD	REVD	REASON FOR ISSUE	DATE

Water for the North West

UNITED UTILITIES WATER LIMITED
HAWESWATER AQUEDUCT RESILIENCE PROGRAMME
COMMUNITY AND HEALTH RECEPTORS
PAGE 5 OF 9

SCALE 1:10,000	SHEET SIZE A3
DRAWING NUMBER LCC_RVBC-BO-FIG-014-003	REVISION 0

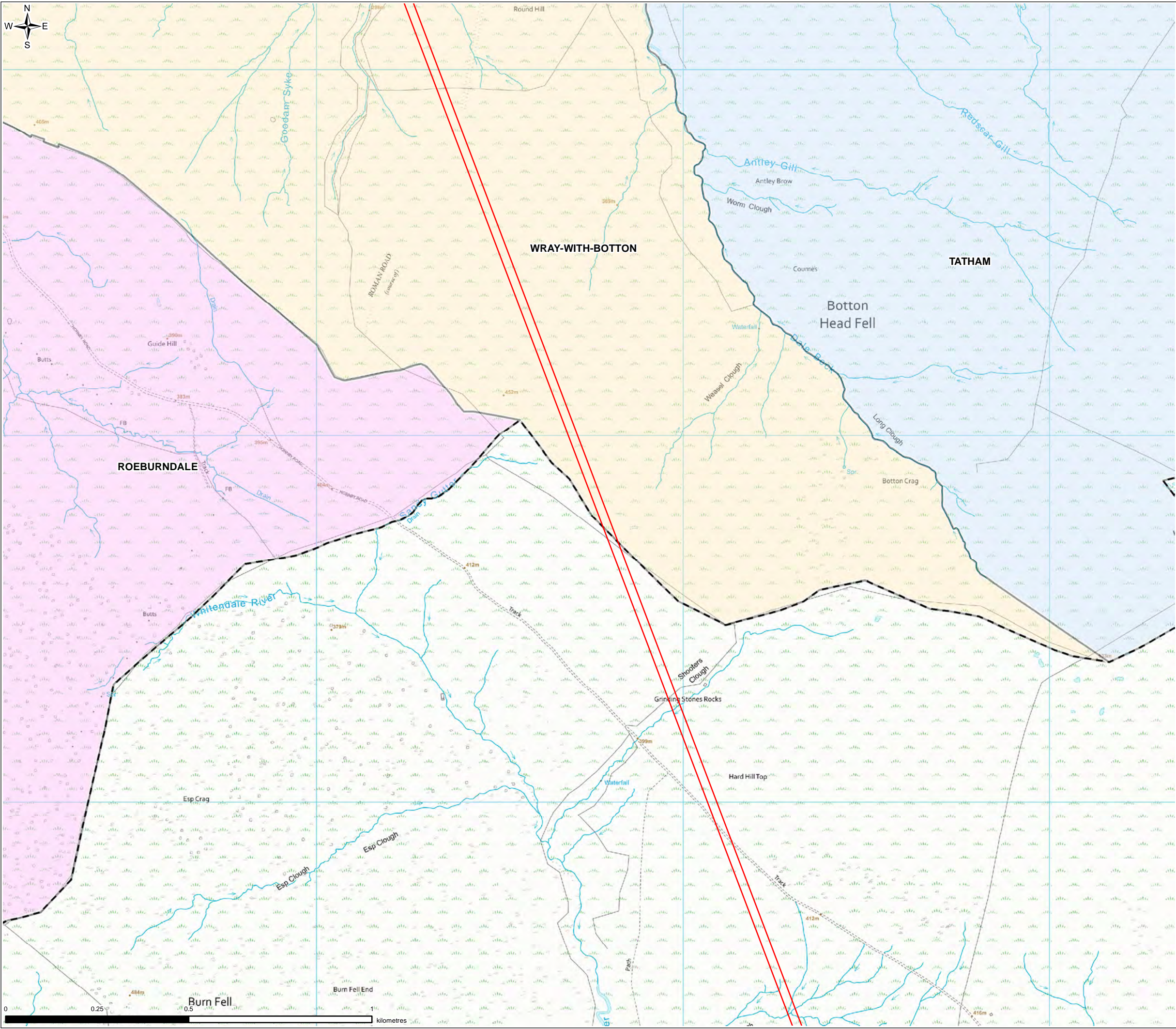


FIGURE 14.3

Legend

- Planning Application Boundary
- Planning Authority Boundary
- Community Area**
 - Roeburndale
 - Tatham
 - Wray-with-Botton

0	SP	TE	BK	Initial Issue	18/05/2021
VERSION	AUTH	CHKD	REVD	REASON FOR ISSUE	DATE



UNITED UTILITIES WATER LIMITED
HAWESWATER AQUEDUCT RESILIENCE PROGRAMME
COMMUNITY AND HEALTH RECEPTORS
PAGE 6 OF 9

SCALE 1:10,000	SHEET SIZE A3
DRAWING NUMBER LCC_RVBC-BO-FIG-014-003	REVISION 0

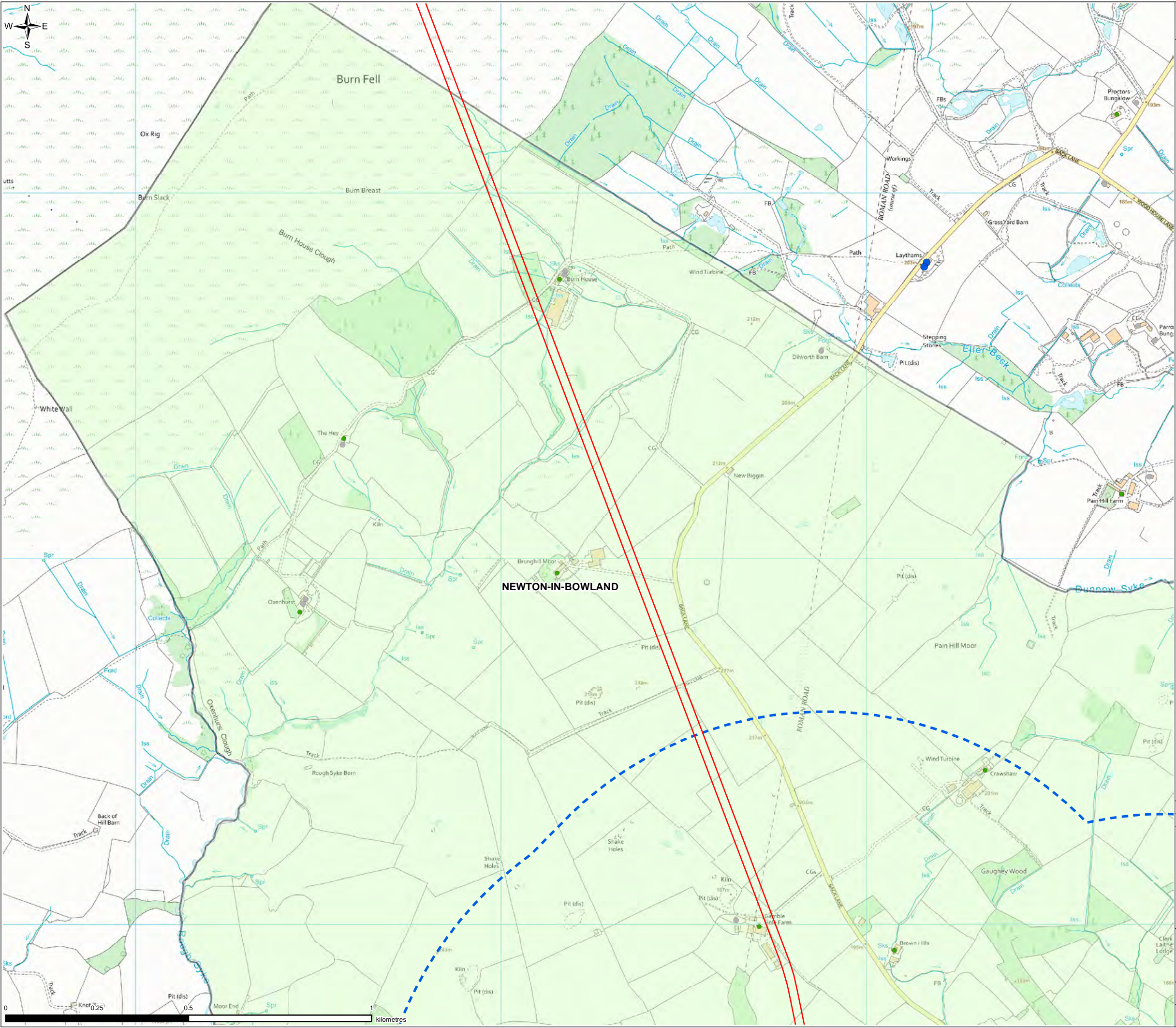
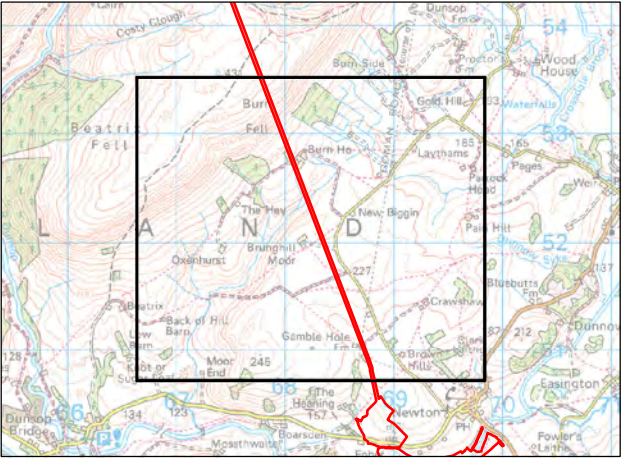


FIGURE 14.3

- Legend
- Planning Application Boundary
 - Local Community Assessment Area (LCAA) Boundary
 - Community Area
 - Newton-in-Bowland
 - Community Receptors
 - Agricultural Activities
 - Commercial Operations
 - Residential



0	SP	TE	BK	Initial Issue	18/05/2021
VERSION	AUTH	CHKD	REVD	REASON FOR ISSUE	DATE



UNITED UTILITIES WATER LIMITED
HAWESWATER AQUEDUCT RESILIENCE PROGRAMME
COMMUNITY AND HEALTH RECEPTORS
PAGE 7 OF 9

SCALE 1:10,000	SHEET SIZE A3
DRAWING NUMBER LCC_RVBC-BO-FIG-014-003	REVISION 0

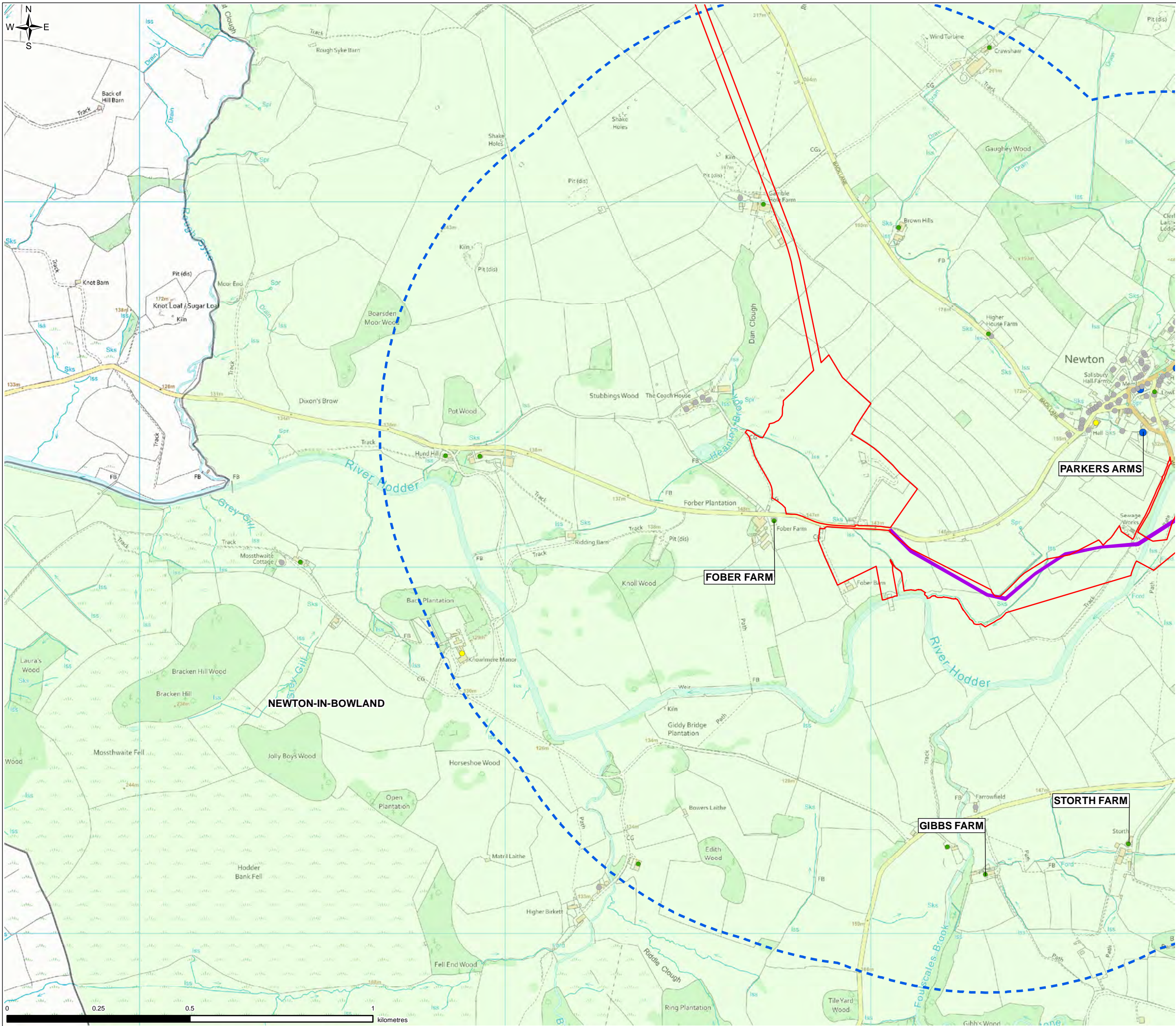
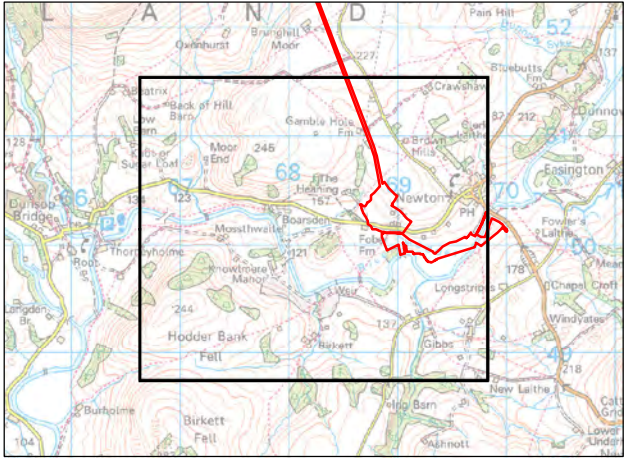


FIGURE 14.3

- Legend
- Planning Application Boundary
 - Local Community Assessment Area (LCAA) Boundary
 - Construction Traffic Route
- Community Area
- Newton-in-Bowland
- Community Receptors
- Agricultural Activities
 - Commercial Operations
 - Residential
 - Social Infrastructure



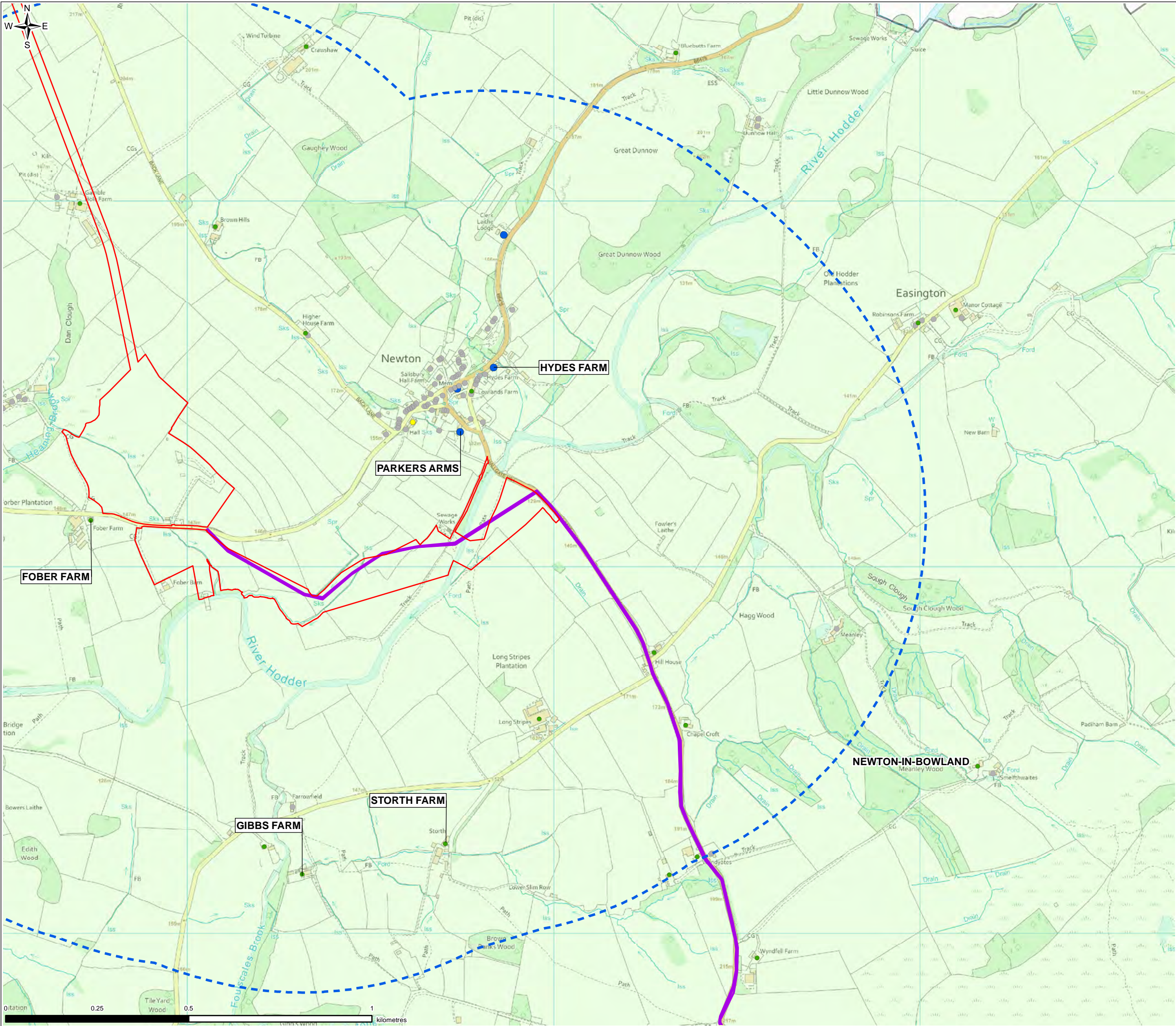
0	SP	TE	BK	Initial Issue	18/05/2021
VERSION	AUTH	CHKD	REVD	REASON FOR ISSUE	DATE



UNITED UTILITIES WATER LIMITED
HAWESWATER AQUEDUCT RESILIENCE PROGRAMME
COMMUNITY AND HEALTH RECEPTORS
PAGE 8 OF 9

SCALE 1:10,000	SHEET SIZE A3
DRAWING NUMBER LCC_RVBC-BO-FIG-014-003	REVISION 0

FIGURE 14.3



Legend

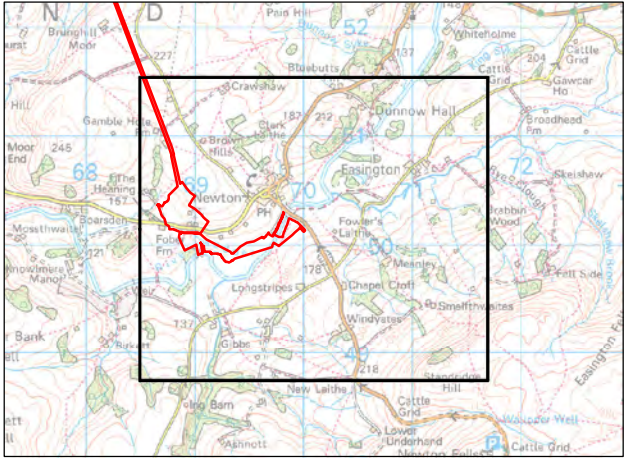
- Planning Application Boundary
- Local Community Assessment Area (LCAA) Boundary
- Construction Traffic Route

Community Area

- Newton-in-Bowland

Community Receptors

- Agricultural Activities
- Commercial Operations
- Residential
- Social Infrastructure



0	SP	TE	BK	Initial Issue	18/05/2021
VERSION	AUTH	CHKD	REVD	REASON FOR ISSUE	DATE



UNITED UTILITIES WATER LIMITED
 HAWESWATER AQUEDUCT RESILIENCE PROGRAMME
 COMMUNITY AND HEALTH RECEPTORS
 PAGE 9 OF 9

SCALE 1:10,000	SHEET SIZE A3
DRAWING NUMBER LCC_RVBC-BO-FIG-014-003	REVISION 0