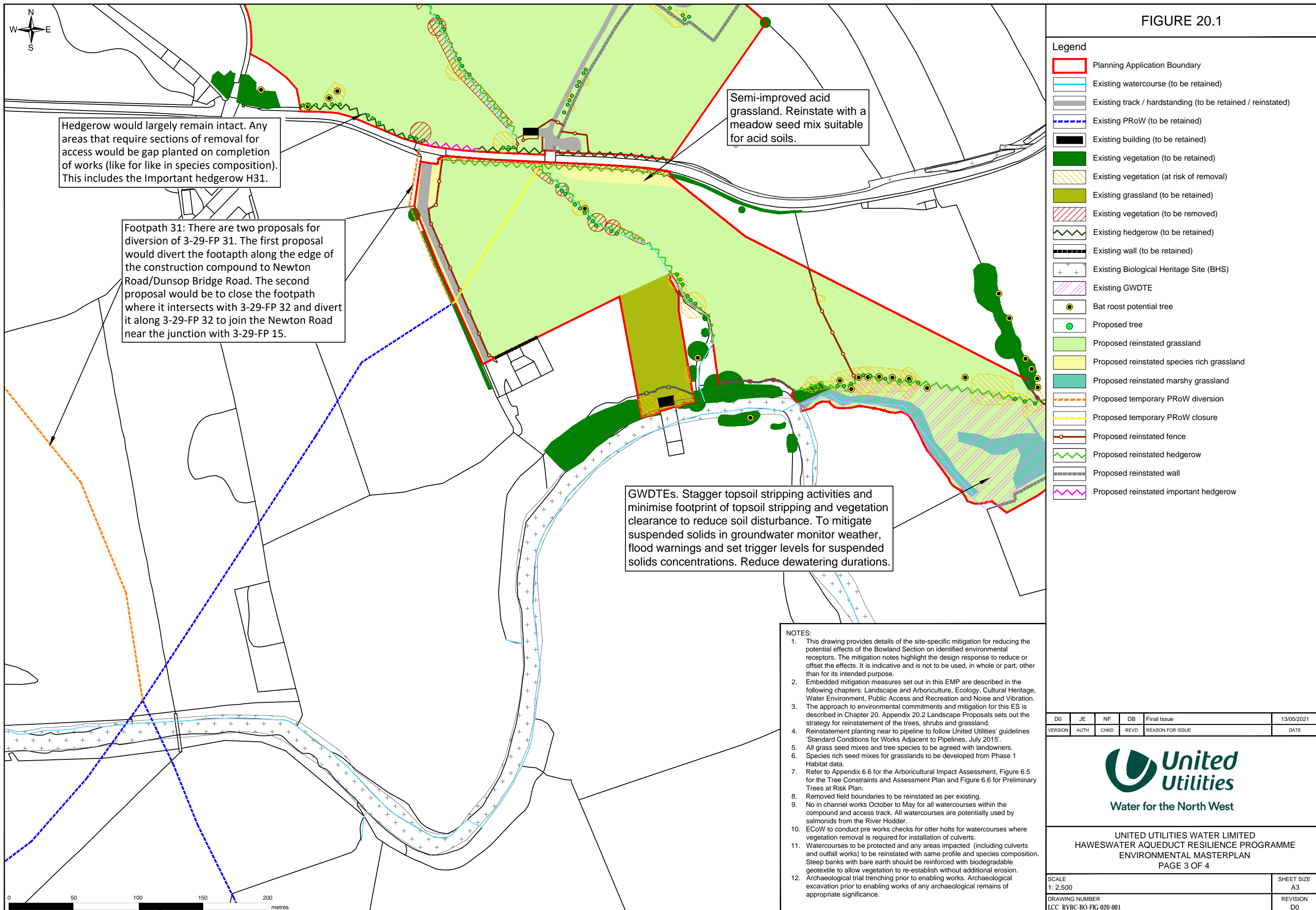


FIGURE 20.1



- NOTES:**
- This drawing provides details of the site-specific mitigation for reducing the potential effects of the Bowland Section on identified environmental receptors. The mitigation notes highlight the design response to reduce or offset the effects. It is indicative and is not to be used, in whole or part, other than for its intended purpose.
  - Embedded mitigation measures set out in this EMP are described in the following chapters: Landscape and Arboriculture, Ecology, Cultural Heritage, Water Environment, Public Access and Recreation and Noise and Vibration.
  - The approach to environmental commitments and mitigation for this ES is described in Chapter 20. Appendix 20.2 Landscape Proposals sets out the strategy for reinstatement of the trees, shrubs and grassland.
  - Reinstatement planting near to pipeline to follow United Utilities' guidelines 'Standard Conditions for Works Adjacent to Pipelines, July 2015'.
  - All grass seed mixes and tree species to be agreed with landowners.
  - Species rich seed mixes for grasslands to be developed from Phase 1 Habitat data.
  - Refer to Appendix 6.6 for the Arboricultural Impact Assessment, Figure 6.5 for the Tree Constraints and Assessment Plan and Figure 6.6 for Preliminary Trees at Risk Plan.
  - Removed field boundaries to be reinstated as per existing.
  - No in channel works October to May for all watercourses within the compound and access track. All watercourses are potentially used by salmonids from the River Hodder.
  - ECoW to conduct pre works checks for otter holts for watercourses where vegetation removal is required for installation of culverts.
  - Watercourses to be protected and any areas impacted (including culverts and outfall works) to be reinstated with same profile and species composition. Steep banks with bare earth should be reinforced with biodegradable geotextile to allow vegetation to re-establish without additional erosion.
  - Archaeological trial trenching prior to enabling works. Archaeological excavation prior to enabling works of any archaeological remains of appropriate significance.

DO	JE	NF	DB	Final Issue	13/05/2021
VERSION	AUTH	CHKD	REVD	REASON FOR ISSUE	DATE



UNITED UTILITIES WATER LIMITED  
 HAWESWATER AQUEDUCT RESILIENCE PROGRAMME  
 ENVIRONMENTAL MASTERPLAN  
 PAGE 3 OF 4

SCALE 1: 2,500	SHEET SIZE A3
DRAWING NUMBER LCC_RVBC-BO-FIG-020-001	REVISION D0

The copyright of this document, which contains information of a proprietary nature, is vested in United Utilities Water Limited. The content of this document may not be used for purposes other than that for which it has been supplied and may not be reproduced, either wholly or in part, in any way whatsoever. It may not be used by, or its contents divulged to any other person whatsoever without the prior written permission of United Utilities Water Limited. Copyright Acknowledgement: Use of Ordnance Survey map data sanctioned by the controller of H.M. Stationery Office. OS Licence Number 100019326. Crown copyright reserved. Unauthorised production infringes copyright.