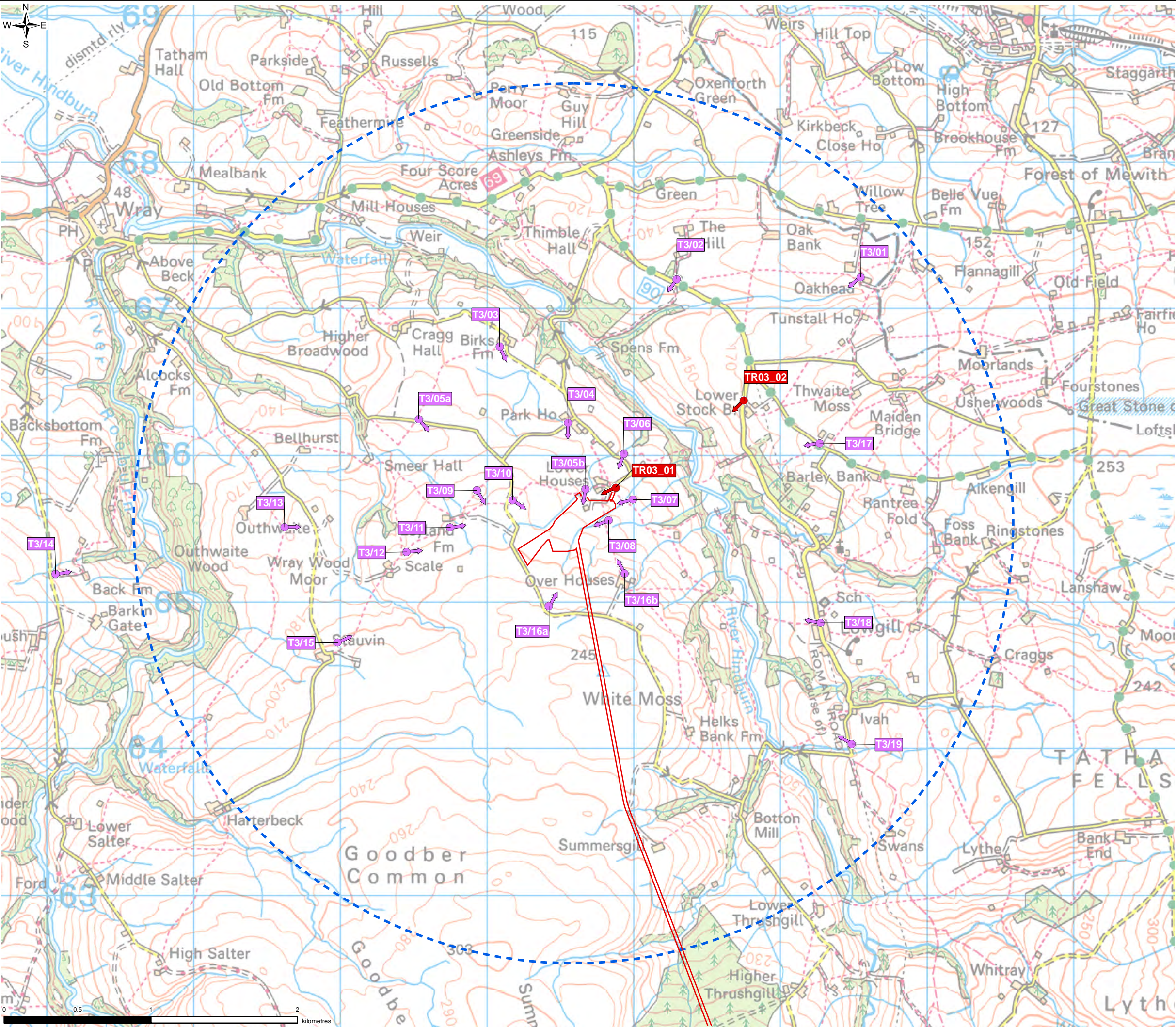
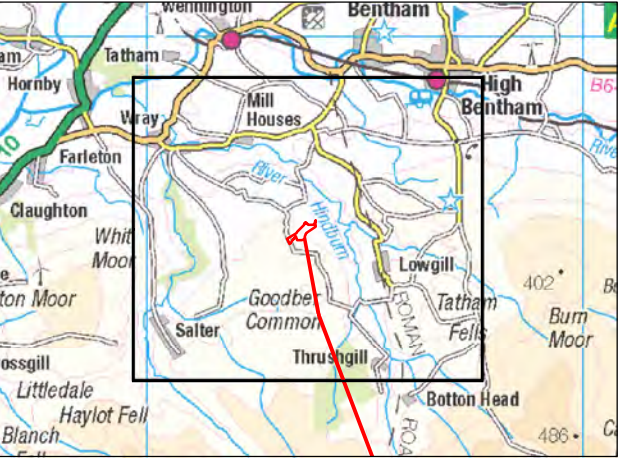


FIGURE 6.2

- Notes
- 1. Representative viewpoint location photos are shown on Figure 6.5.
 - 2. Refer to Appendix 6.5 for the Visual Assessment Schedules.



- Legend
- Planning Application Boundary
 - 3km Detailed Assessment Area
 - Viewpoints
 - Viewpoints and Photomontages



0	SP	NF	DB	Initial Issue	10/05/2021
VERSION	AUTH	CHRD	REVD	REASON FOR ISSUE	DATE

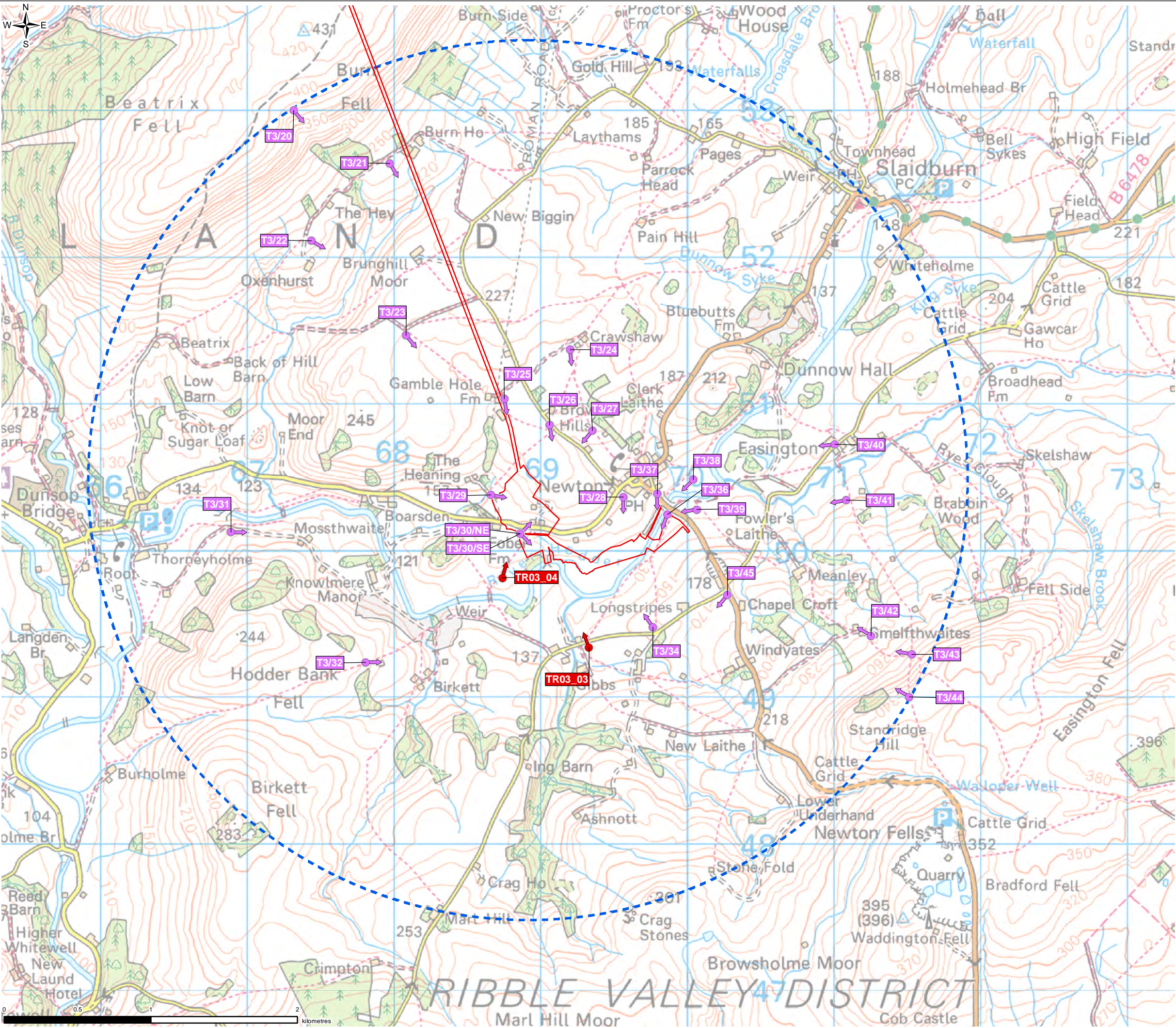


UNITED UTILITIES WATER LIMITED
HAWESWATER AQUEDUCT RESILIENCE PROGRAMME
REPRESENTATIVE VIEWPOINT LOCATIONS AND
PHOTOMONTAGE LOCATIONS
PAGE 1 OF 2

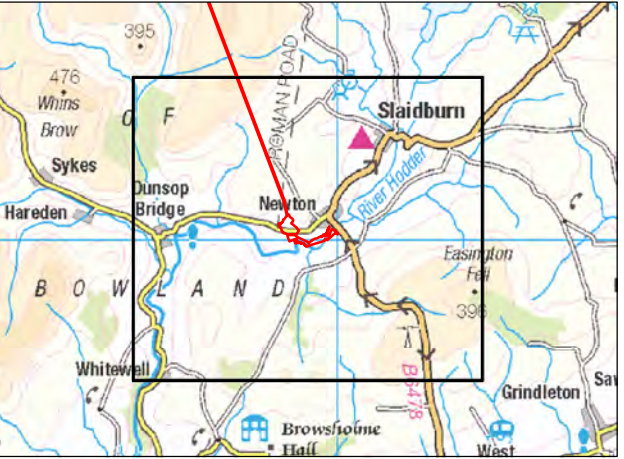
SCALE 1:25,000	SHEET SIZE A3
DRAWING NUMBER LCC_RVBC-BO-FIG-006-002	REVISION 0

FIGURE 6.2

- Notes
- 1. Representative viewpoint location photos are shown on Figure 6.5.
 - 2. Refer to Appendix 6.5 for the Visual Assessment Schedules.



- Legend
- Planning Application Boundary
 - 3km Detailed Assessment Area
 - Viewpoints
 - Viewpoints and Photomontages



0	SP	NF	DB	Initial Issue	10/05/2021
VERSION	AUTH	CHRD	REVD	REASON FOR ISSUE	DATE



UNITED UTILITIES WATER LIMITED
HAWESWATER AQUEDUCT RESILIENCE PROGRAMME
REPRESENTATIVE VIEWPOINT LOCATIONS AND
PHOTOMONTAGE LOCATIONS
PAGE 2 OF 2

SCALE 1:25,000	SHEET SIZE A3
DRAWING NUMBER LCC_RVBC-BO-FIG-006-002	REVISION 0