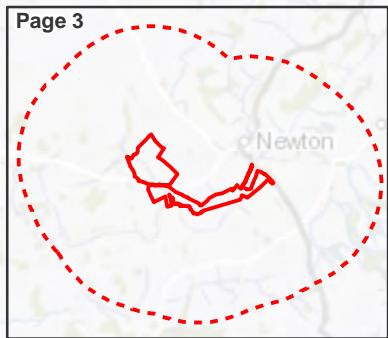
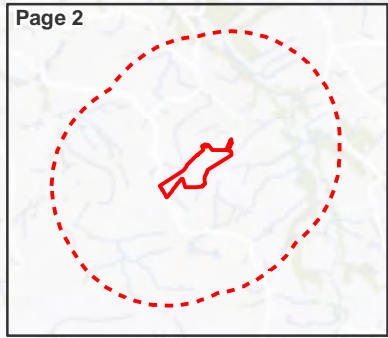
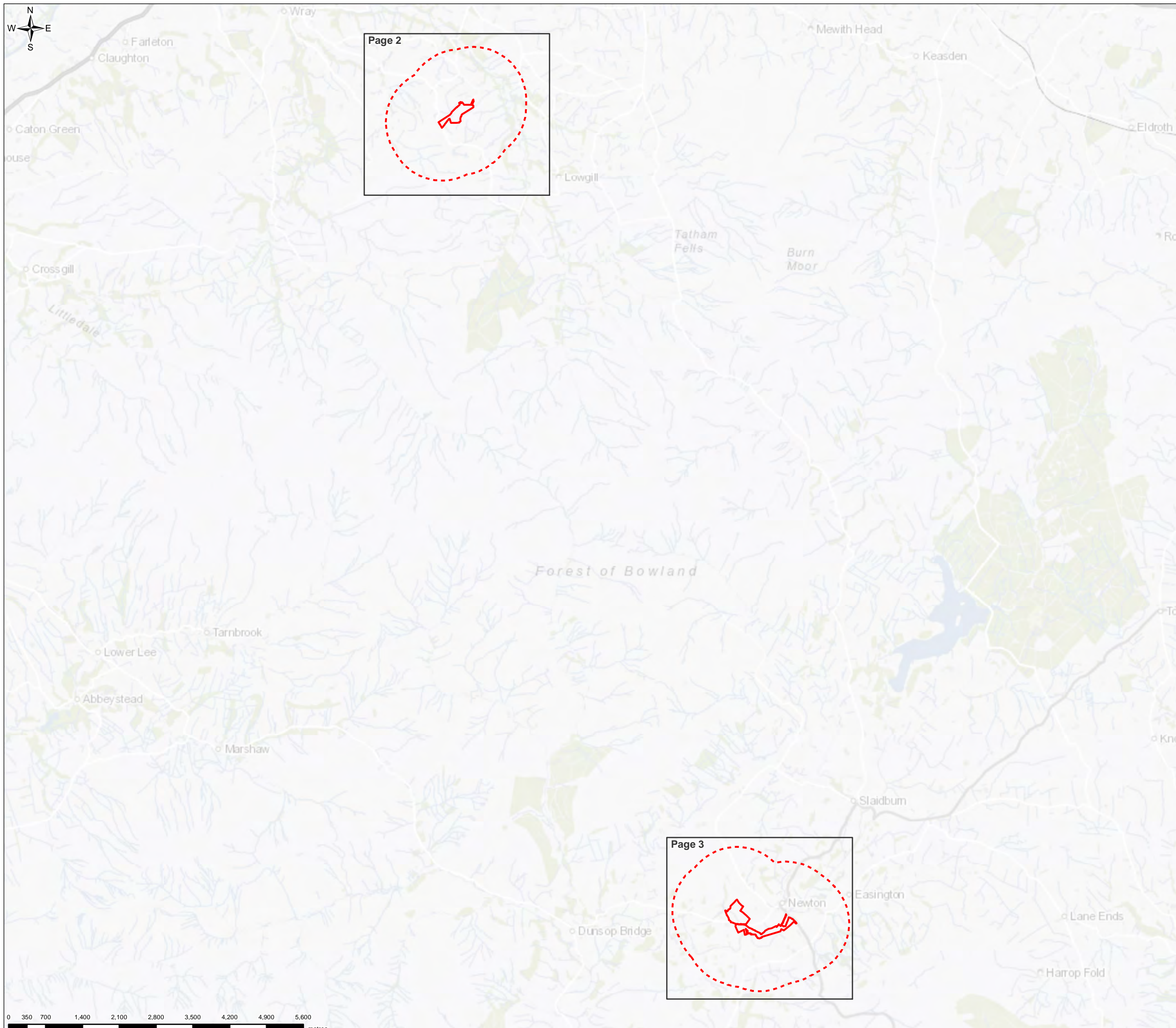



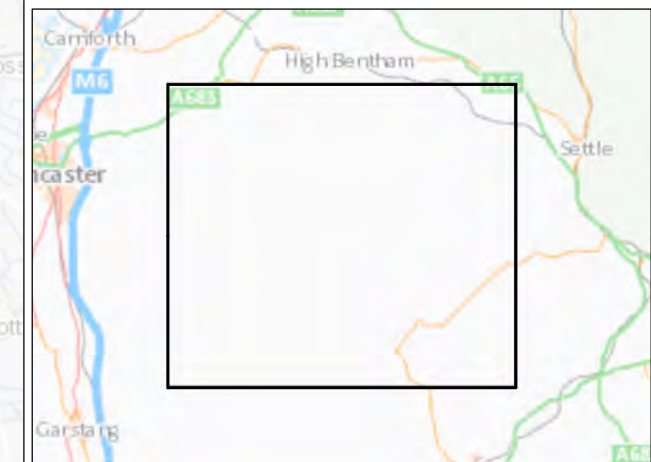


FIGURE 9A.3



Legend

-  Compound location
-  Compound location - 1km bffer
-  Page and page number



0	MK	MW	LS	Initial Issue	17/03/2021
VERSION	AUTH	CHKD	REVD	REASON FOR ISSUE	DATE

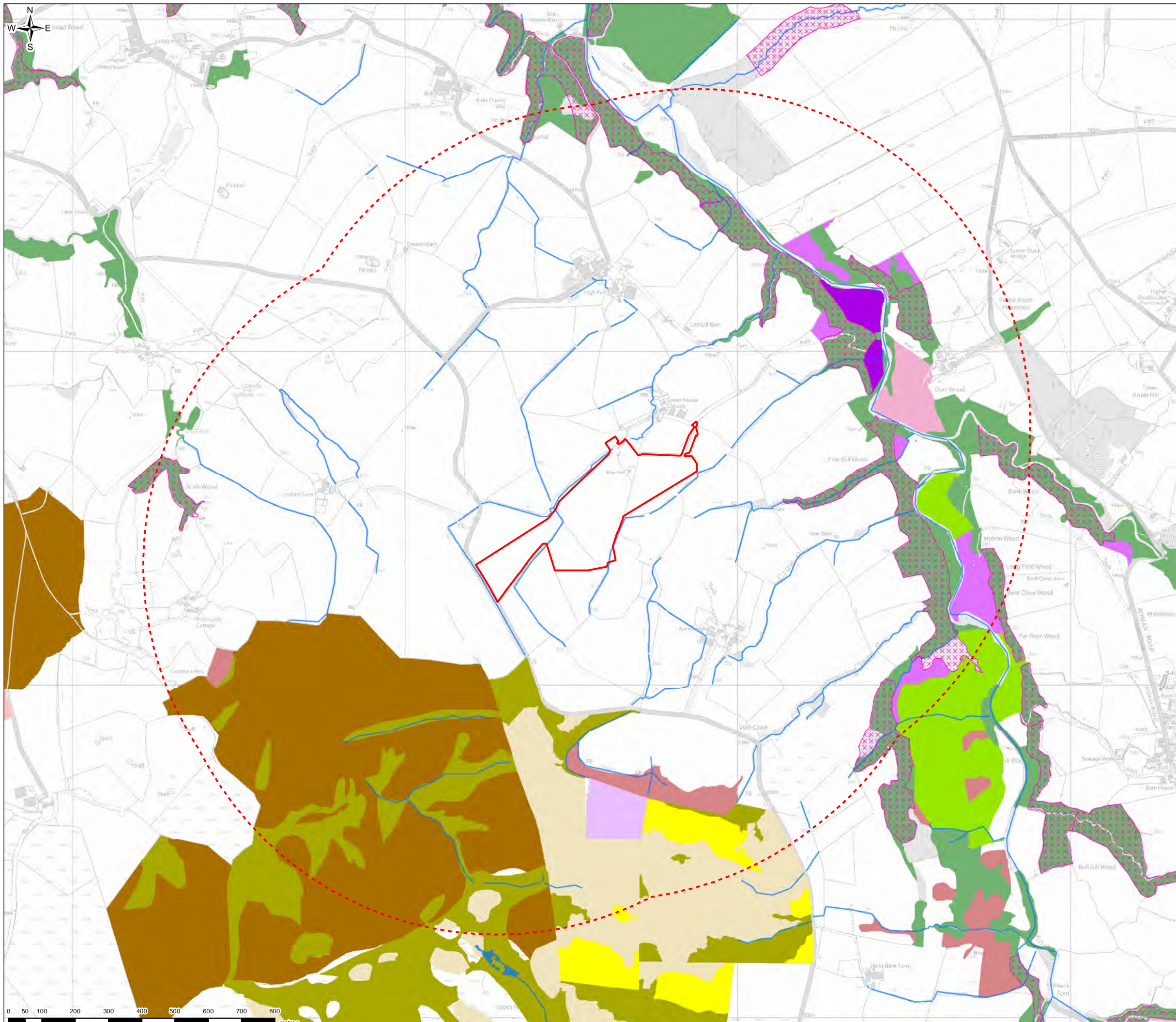


UNITED UTILITIES WATER LIMITED  
 HAWESWATER AQUEDUCT RESILIENCE PROGRAMME  
 PRIORITY HABITATS AND ANCIENT WOODLAND WITHIN 1KM  
 BOWLAND SECTION  
 PAGE 1 of 3

SCALE 1:70,000	SHEET SIZE A3
DRAWING NUMBER LCC_RVBC-BO-FIG-009-01-03	REVISION 0

The copyright of this document, which contains information of a proprietary nature, is vested in United Utilities Water Limited. The content of this document may not be used for purposes other than that for which it has been supplied and may not be reproduced, either wholly or in part, in any way whatsoever. It may not be used by, or its contents divulged to any other person whatsoever without the prior written permission of United Utilities Water Limited. Copyright Acknowledgement: Use of Ordnance Survey map data sanctioned by the controller of H.M. Stationery Office. OS Licence Number 100019326 and 0100031673. Crown copyright reserved. Unauthorised production infringes copyright. Natural England Data - contains public sector information licensed under the Open Government Licence v3.0. Contains OS data © Crown copyright and database right 2021.

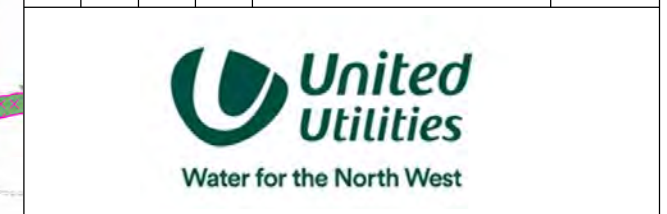
FIGURE 9A.3



- Legend**
- Compound location
  - Compound location - 1km bffer
- Priority Habitat**
- Blanket bog
  - Deciduous woodland
  - Good quality semi-improved grassland
  - Grass moorland
  - Lowland dry acid grassland
  - Lowland fens
  - Lowland heathland
  - Lowland meadows
  - Purple moor grass and rush pastures
  - Upland flushes, fens and swamps
  - Upland hay meadow
  - Upland heathland
- Other Notable Habitats**
- Watercourse
  - Surface water
  - Ancient woodland



0	MK	MW	LS	Initial Issue	17/03/2021
VERSION	AUTH	CHKD	REVD	REASON FOR ISSUE	DATE

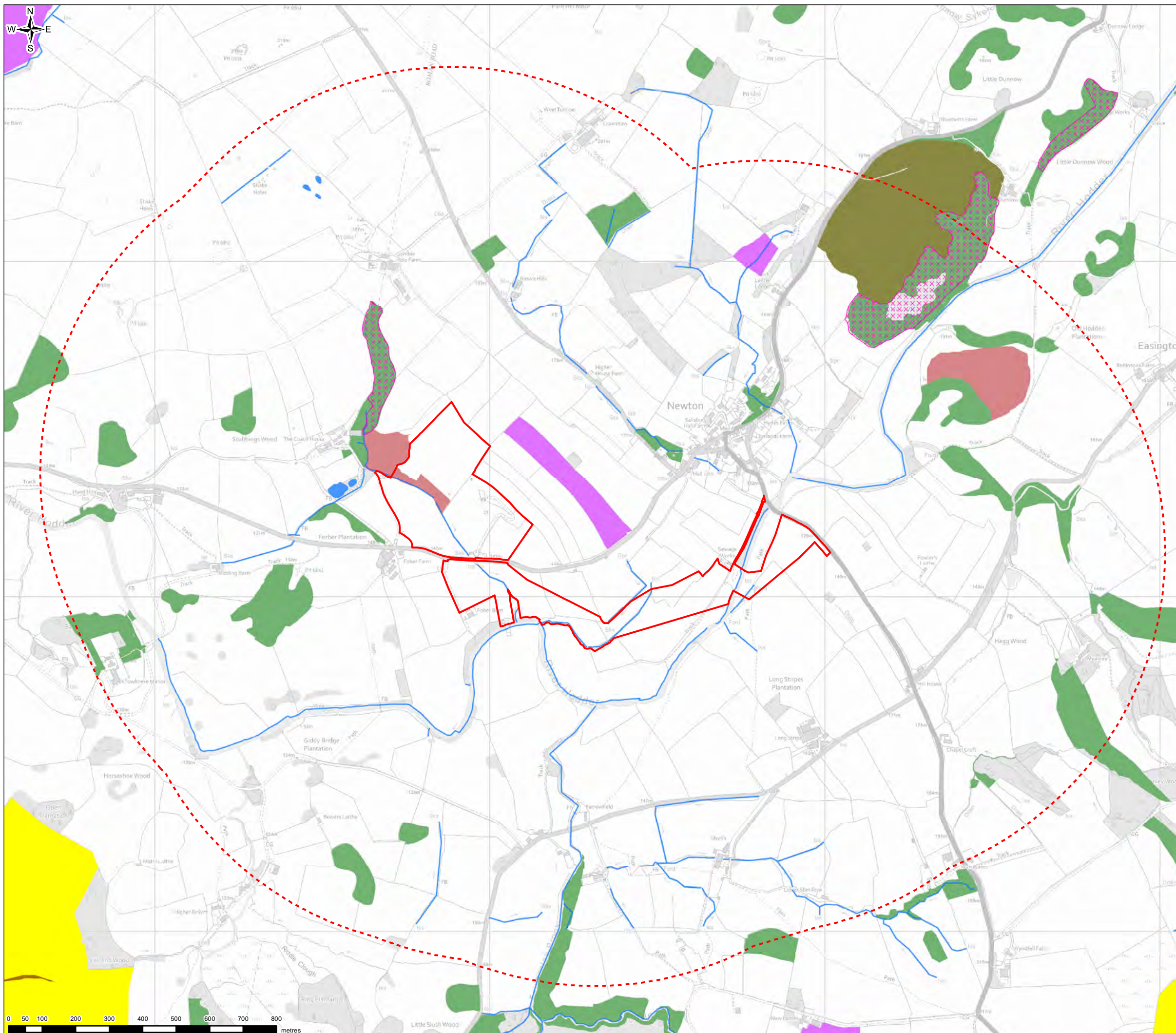


UNITED UTILITIES WATER LIMITED  
HAWESWATER AQUEDUCT RESILIENCE PROGRAMME  
PRIORITY HABITATS AND ANCIENT WOODLAND WITHIN 1KM  
BOWLAND SECTION  
PAGE 2 of 3

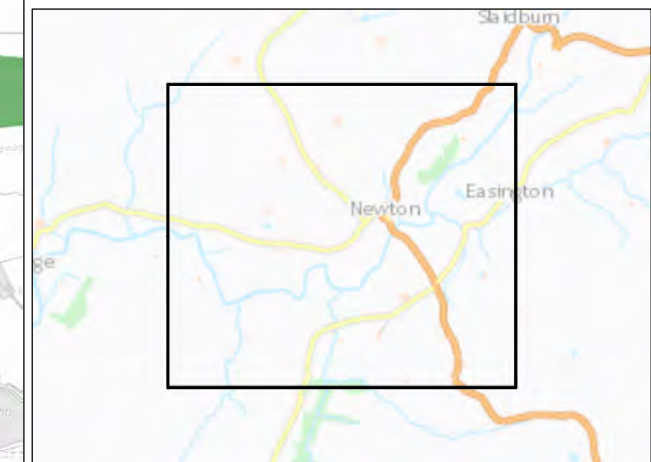
SCALE 1:11,000	SHEET SIZE A3
DRAWING NUMBER LCC_RVBC-BO-FIG-009-01-03	REVISION 0

The copyright of this document, which contains information of a proprietary nature, is vested in United Utilities Water Limited. The content of this document may not be used for purposes other than that for which it has been supplied and may not be reproduced, either wholly or in part, in any way whatsoever. It may not be used by, or its contents divulged to any other person whatsoever without the prior written permission of United Utilities Water Limited. Copyright Acknowledgement: Use of Ordnance Survey map data sanctioned by the controller of H.M. Stationery Office. OS Licence Number 100019326 and 0100031673. Crown copyright reserved. Unauthorised production infringes copyright. **Natural England Data** - contains public sector information licensed under the Open Government Licence v3.0. Contains OS data © Crown copyright and database right 2021.

FIGURE 9A.3



- Legend**
- Compound location
  - Compound location - 1km bffer
- Priority Habitat**
- Deciduous woodland
  - Good quality semi-improved grassland
  - Grass moorland
  - Lowland calcareous grassland
  - Lowland fens
  - Upland heathland
- Other Notable Habitats**
- Watercourse
  - Surface water
  - Ancient woodland



0	MK	MW	LS	Initial Issue	17/03/2021
VERSION	AUTH	CHKD	REVD	REASON FOR ISSUE	DATE



UNITED UTILITIES WATER LIMITED  
 HAWESWATER AQUEDUCT RESILIENCE PROGRAMME  
 PRIORITY HABITATS AND ANCIENT WOODLAND WITHIN 1KM  
 BOWLAND SECTION  
 PAGE 3 of 3

SCALE 1:11,000	SHEET SIZE A3
DRAWING NUMBER LCC_RVBC-BO-FIG-009-01-03	REVISION 0

The copyright of this document, which contains information of a proprietary nature, is vested in United Utilities Water Limited. The content of this document may not be used for purposes other than that for which it has been supplied and may not be reproduced, either wholly or in part, in any way whatsoever. It may not be used by, or its contents divulged to any other person whatsoever without the prior written permission of United Utilities Water Limited. Copyright Acknowledgement: Use of Ordnance Survey map data sanctioned by the controller of H.M. Stationery Office. OS Licence Number 100019326 and 0100031673. Crown copyright reserved. Unauthorised production infringes copyright. Natural England Data - contains public sector information licensed under the Open Government Licence v3.0. Contains OS data © Crown copyright and database right 2021.